

Fire Prevention Fee Presentation to the Santa Barbara County Board of Supervisors

Robert Lewin, CAL FIRE/San Luis Obispo Unit Chief
Mike Dyer, Santa Barbara County Fire Chief



Fire Prevention Fee

History:

June 15, 2011 - Legislature adds the Fee to the 2011/12 Budget Bill.

July 7, 2011 – Governor Brown signs the Fee (AB X 1 29) into law requiring CAL FIRE and Board of Equalization (BOE) to implement and collect the Fee.

January 11, 2012 – The Board of Forestry and Fire Protection passes “Emergency Regulation”, as outlined by the Law, providing CAL FIRE & BOE the fee specifics.

Fire Prevention Fee

Status of the Fee

- The Board of Equalization began sending out bills in August 2012. Santa Barbara County property owners living in SRA have received their bills last month.
- The Board of Forestry & Fire Protection is in the process of writing “Permanent Regulations”.

Fire Prevention Fee

Fire Prevention Fee Funding

- The Fee provides a stable funding source for fire prevention replacing money once provided out of the State's General Fund.
- The fees collected will fund current fire prevention activities and services and is not for additional services.

Fire Prevention Fee

What is State Responsibility Area (SRA)?

State and privately-owned forest, watershed, and rangeland for which the primary financial responsibility of preventing and suppressing wildfires rests with the State.

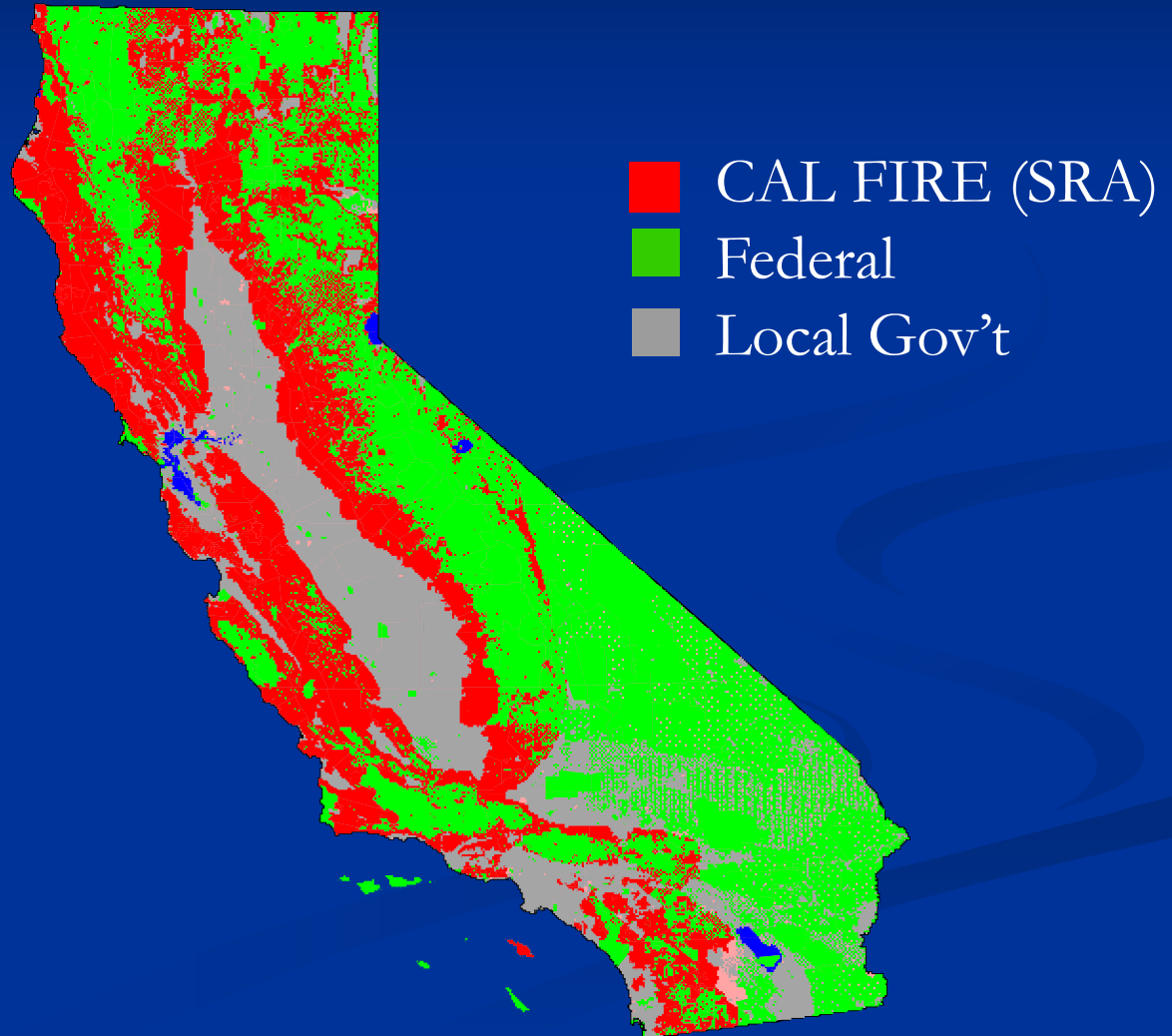
No Federal or Incorporated City lands are designated SRA.



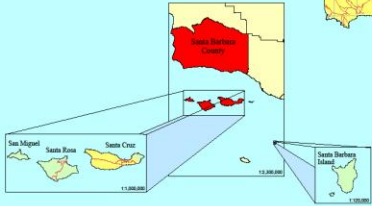
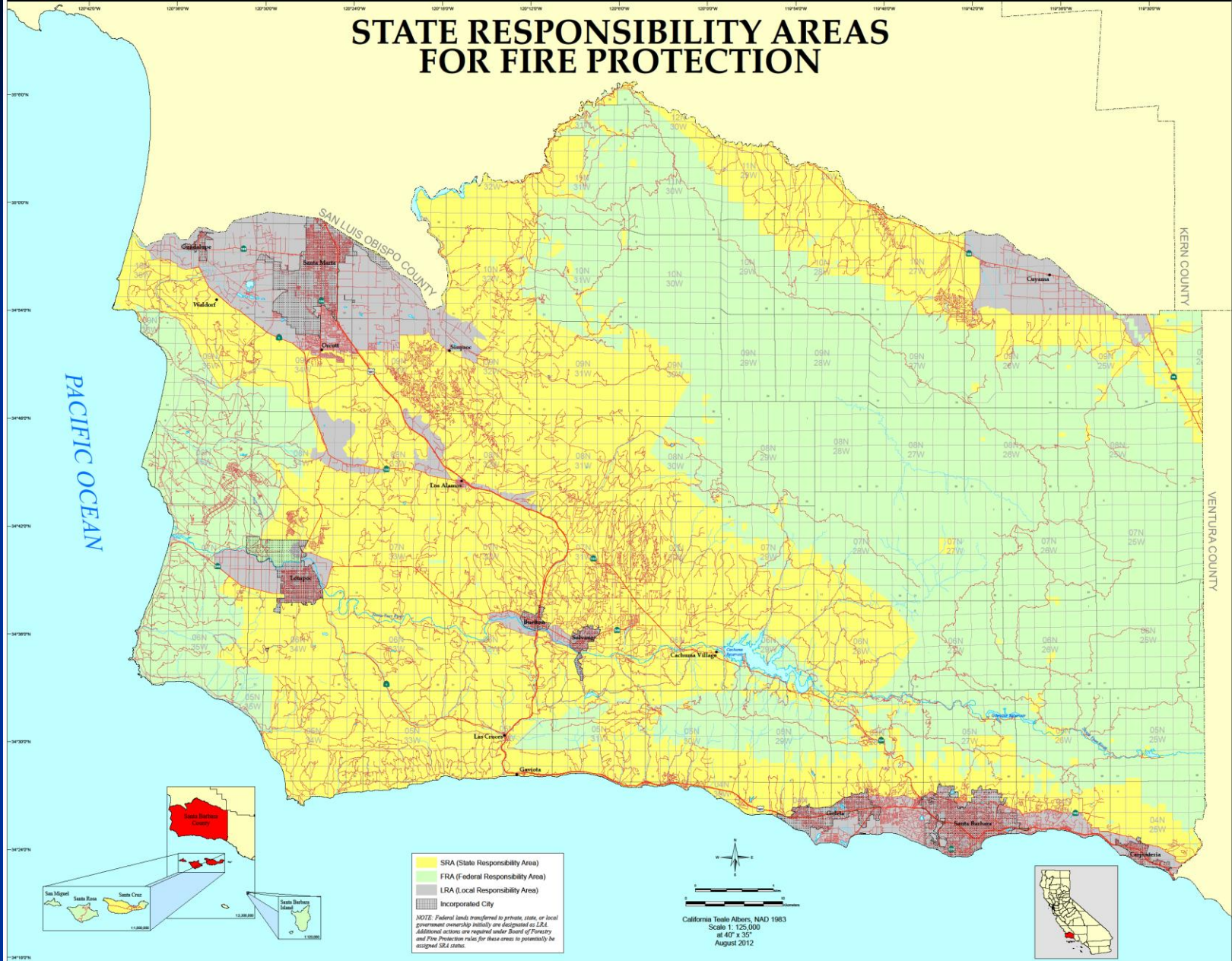
Fire Prevention Fee

Under the new law, who is Assessed the Fee?

The Fee is assessed on habitable structures within State Responsibility Area (SRA), which is roughly 31 million acres across California.



STATE RESPONSIBILITY AREAS FOR FIRE PROTECTION



SRA (State Responsibility Area)
 FRA (Federal Responsibility Area)
 LRA (Local Responsibility Area)
 Incorporated City

NOTE: Federal lands transferred to private, state, or local government ownership initially are designated as LRA. Additional actions are required under Board of Forestry and Fire Protection rules for these areas to potentially be assigned SRA status.

California Tiele Albers, NAD 1983
 Scale 1: 125,000
 at 40" x 35"
 August 2012



The State of California and the Department of Forestry and Fire Protection make no representations or warranties regarding the accuracy of data or maps. Neither the State nor the Department shall be liable under any circumstances for any direct, special, incidental, or consequential damages with respect to any claim by any user or third party on account of, or arising from, the use of data or maps.

Obtain FRAP maps, data, metadata and publications on the Internet at <http://frap.cdf.ca.gov>
 For more information, contact CDF- FRAP, P.O. Box 944240, Sacramento, CA 95824-2400, (916) 327-3939

Jerry Brown, Governor, State of California
 John Laird, Secretary for Resources, The Natural Resources Agency
 Ken Powell, Director, Department of Forestry and Fire Protection

DATA SOURCES
 CAL FIRE State Responsibility Areas (srr11.2)
 CAL FIRE Incorporated Cities (incp11.2)

MAP ID: sbrmap42



SANTA BARBARA COUNTY FIRE HISTORY 2012

Legend

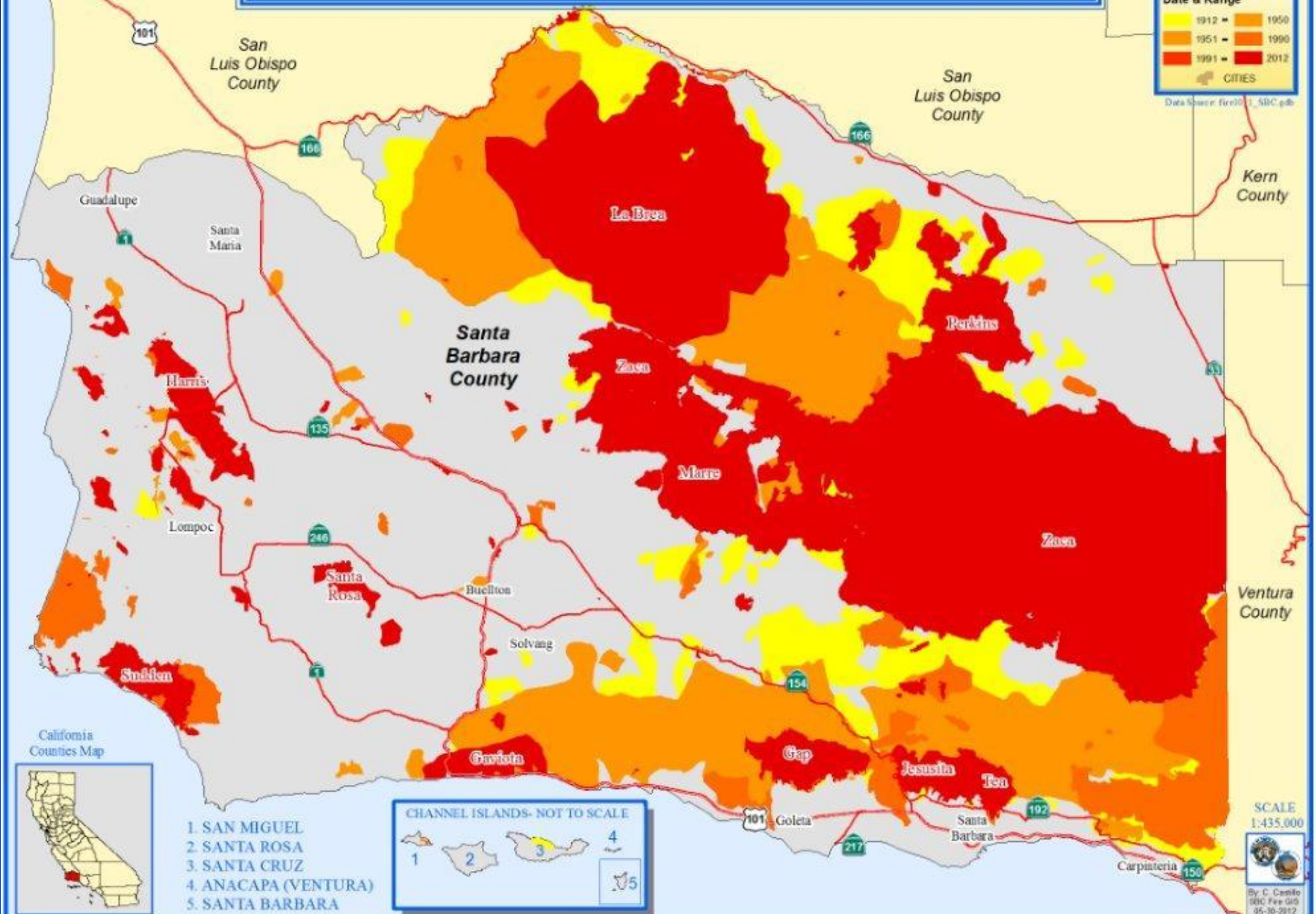
SBC Fire History

Date & Range

1912 -	1950
1951 -	1990
1991 -	2012

CITIES

Data Source: fireGIS, SBC pds



California Counties Map



1. SAN MIGUEL
2. SANTA ROSA
3. SANTA CRUZ
4. ANACAPA (VENTURA)
5. SANTA BARBARA

CHANNEL ISLANDS- NOT TO SCALE

SCALE
1:435,000

By: C. Castillo
09C Fire GIS
05-30-2012

Fire Prevention Fee

Who is Assessed the Fire Prevention Fee?

Each habitable structure - defined by the Board of Forestry's Emergency Regulation as a building used or intended to be used for human habitation.



Includes, but is not limited to, a mobilehome or manufactured home.

Fire Prevention Fee

How much is the Fee?

- Under the law, the fee is assessed up to \$150 per habitable structure.
- 14,000 habitable structures in Santa Barbara County
- 850,000 habitable structures California



Fire Prevention Fee

What If the area is also protected by a municipal fire agency?

The Fee is discounted \$35 per habitable structure if the home is within another local fire agencies jurisdiction that provides municipal fire protection. This applies to all of Santa Barbara County.



Fire Prevention Fee

What about apartments?

The apartment building is assessed the Fee for the structure, but not multiplied by each unit.



Fire Prevention Fee

What about Condominiums?

In a condominium complex with multiple owners, each owner would have a corresponding parcel number and, therefore, each would individually be assessed the Fee.



Fire Prevention Fee

Are ALL structures assessed the Fee?

The Fee is not assessed on all structures. Barns, woodsheds, outbuildings and other structures not used for human habitation are not assessed the Fee.



Fire Prevention Fee

What is Fire Prevention?

The work done to prevent fire ignitions or a fire from spreading from or into homes, communities and wildland areas. This includes activities like brush clearance around communities, roadways and along evacuation routes, defensible space inspections, fire breaks as well as public education.

Vegetation Management Program in Santa Barbara County Fire

- ◎ Recent Project Areas
 - Mission Canyon
 - Burton Mesa
 - Tepusquet Canyon
 - Range Improvement: Los Alamos
 - UCSB



Example: Tepusquet Canyon

○ Road Side Clearance

- 30' clearance on both sides from edge of pavement.
- 5 miles completed.
- Improvement of evacuation corridor.
- Fire Crew and Fire Construction utilized for implementation.



Fire Prevention Fee

What is CAL FIRE's Role in Santa Barbara County?

- The State is responsible for over 673,000 acres of State Responsibility Area in the County.
- CAL FIRE contracts with Santa Barbara County to protect the SRA in the county.

Fire Prevention Fee

What is a Contract County?

- State law allows CAL FIRE to contract with counties for protection of SRA when appropriate
- Efficient method of providing fire protection without duplicating resources
- Six counties statewide – Kern, Los Angeles, Marin, Orange, **Santa Barbara** and Ventura



Fire Prevention Fee

What is a Contract County?

- Even though you may not see CAL FIRE resources routinely, Santa Barbara County fire protection services are financially provided by CAL FIRE to protect SRA
- CAL FIRE resources respond when needed to assist for major incidents at no additional cost to the County to protect SRA.
- CAL FIRE supports the implementation of the Santa Barbara County Fire Plan involving several wildfire prevention, education and suppression projects and programs.

CAL FIRE CREW PROJECT DAYS IN SANTA BARBARA COUNTY ON FIRE SAFE PROJECTS

Project Sponsor	2008	2009	2010	2011	2012	Total per agency
Montecito	18	51	61	29	10	169
Carpenteria	0	24	2	6	0	32
SB City	5	11	27	13	10	66
Painted Cave	0	0	0	31	8	39
State Parks	19	23	14	12	0	68
COMB	0	12	9	6	0	27
SBC Flood	7	0	0	0	0	7
TOTAL per year	29	121	113	97	28	GRAND TOTAL 408 days

Santa Barbara County Contract FY 11/12

- SRA Acres 673,405
- Stations 9
- Engines 9
- Bulldozers 2
- Prevention Officer 2
- PreFire Mgmt 1
- Dispatch staffing
- CAL FIRE Funding
\$6,463,354

STATE FUNDED FIRE PROTECTION RESOURCES							
SANTA BARBARA COUNTY, CONTRACT # 7CA01418							
CAL FIRE PCA 00700							
7/1/11 TO 6/30/12							
Budgeted Fire Season: 8 months (4/16 to 12/14), Peak Fire Season: 6 months (8/1 to 10/31)							
Activity	Captain	Engineer	Fire-Fighter	HFEO	Fire Prev. Assistant	Dispatch Clerk	Forester-I
FIRE PREVENTION	24.00				12		
DISPATCH	33.24					6	
GROUND ATTACK	264.96	PERM	343.287	39			
F8 31 - Buellton 1E		0.0					
F8 41 - New Cuyama 1E		8EAS					
F8 14 - Los Cameros 1E		0.0					
F8 51 - Lompoc Valley 1E							
F8 24 - Los Alamos 1E							
1DT3							
1DT2							
F8 15 - Mission Canyon 1E							
F8 22 - Orcutt 1E							
F8 32 - Santa Ynez 1E							
F8 23 - Sisquoc 1E							
Pre-Fire Management	12.00						12
Total PM Allotment:	334.20	0.00	343.287	39	12	6	12
Salaries and Wages	\$2,746,250						Operating Expense \$175,807
Salary Savings	(\$103,372)						Equipment \$65,867
Net Salary and Wages	\$2,642,877						Capital Outlay \$67,656
Staff Benefits	\$1,455,436						Special Repairs \$15,329
Planned OT	\$1,210,522						Total OEE \$324,669
Unplanned OT	\$105,117						
							Total PS & OEE \$6,740,611
							Admin. Allotment \$722,743
Total PS	\$6,416,662						Total Allotment \$8,463,354

Fire Prevention Fee

Questions?

