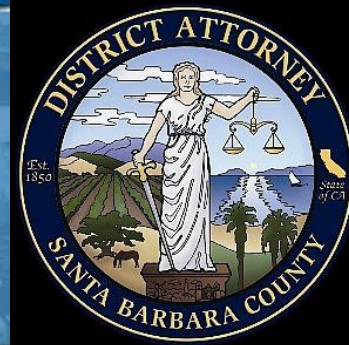


2009-10 Adopted Budget: \$17,865,083

2009-10 Adopted GFC: \$10,960,120

CCPP: pages 10-11

Service Level Reductions: pages 10-12



*District
Attorney*



Gap Analysis

\$3.9 MILLION

TOTAL ESTIMATED BUDGET GAP

\$1.9 million	Salaries and Benefits including \$838,000 in Retirement Contribution
\$1.3 million	“Cliffs” / one-time funding for ongoing core services
\$ 753,738	7% Target Reduction



Potential Service Level Reductions

35 TOTAL REDUCTION IN FTEs

15 Deputy District Attorneys (of 49 = 31%↓)

4 District Attorney Investigators (of 19 = 21%↓)

13 Legal & Admin. Support Staff (of 42 = 31%↓)

3 Victim/Witness Advocates (of 10 = 30%↓)



Duty of the District Attorney

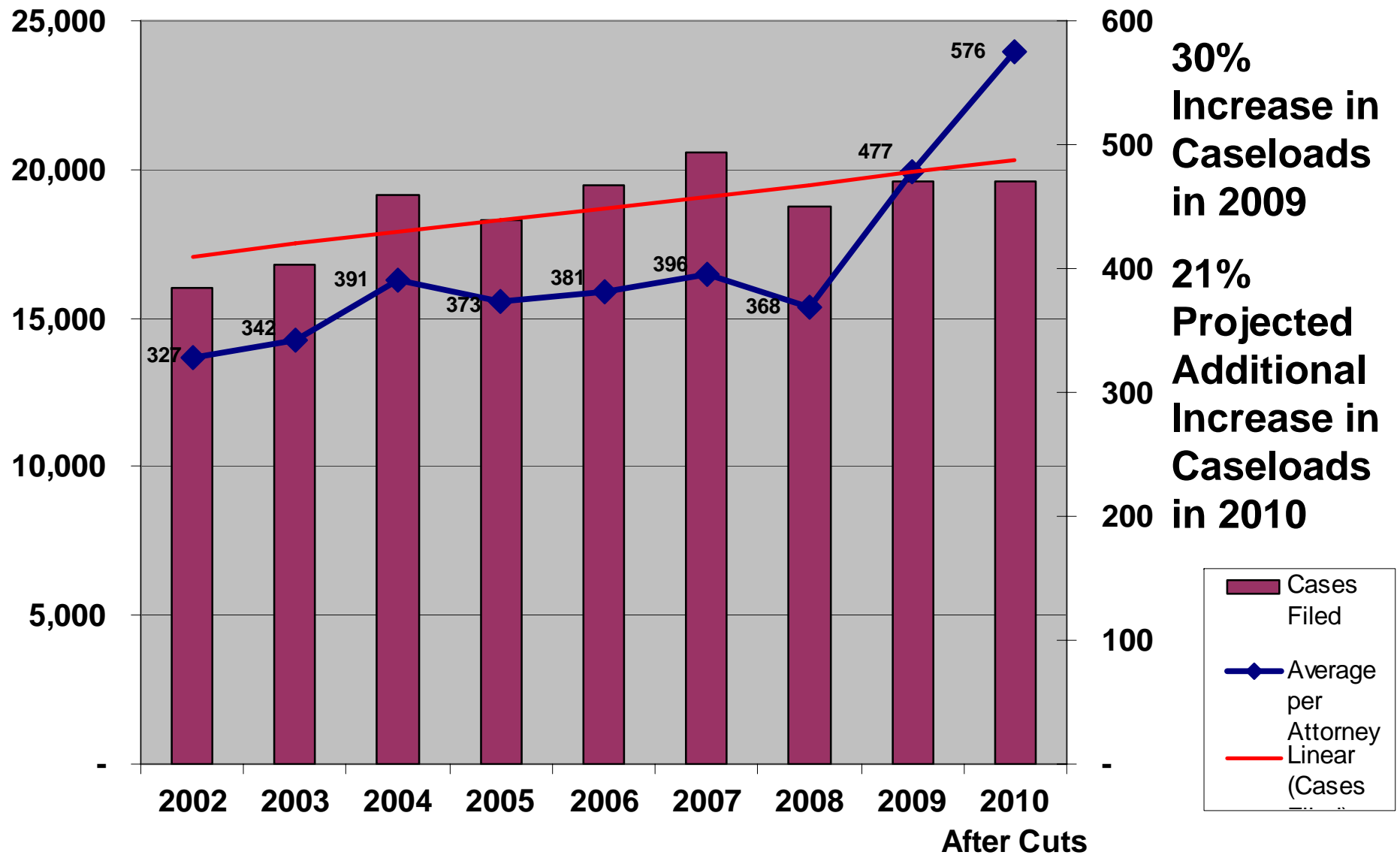
- The mandatory duty of the office of the district attorney is “to diligently and vigilantly pursue those who are believed to have violated the criminal codes of the state.”

People v. Hartman (1985) 170 Cal.App.3d 572

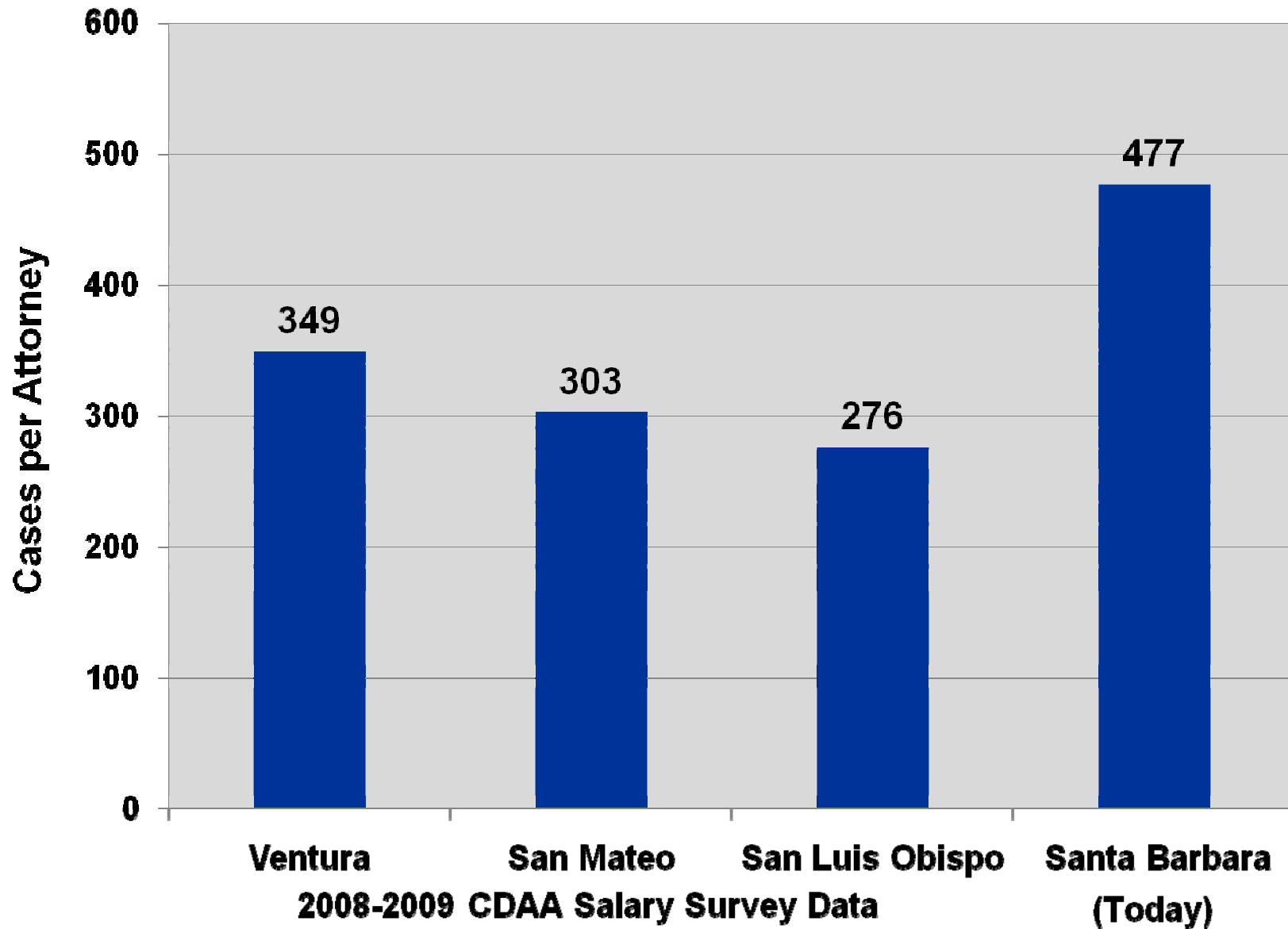
City of Merced v. County of Merced (1966) 240 Cal.App.2d 763,766



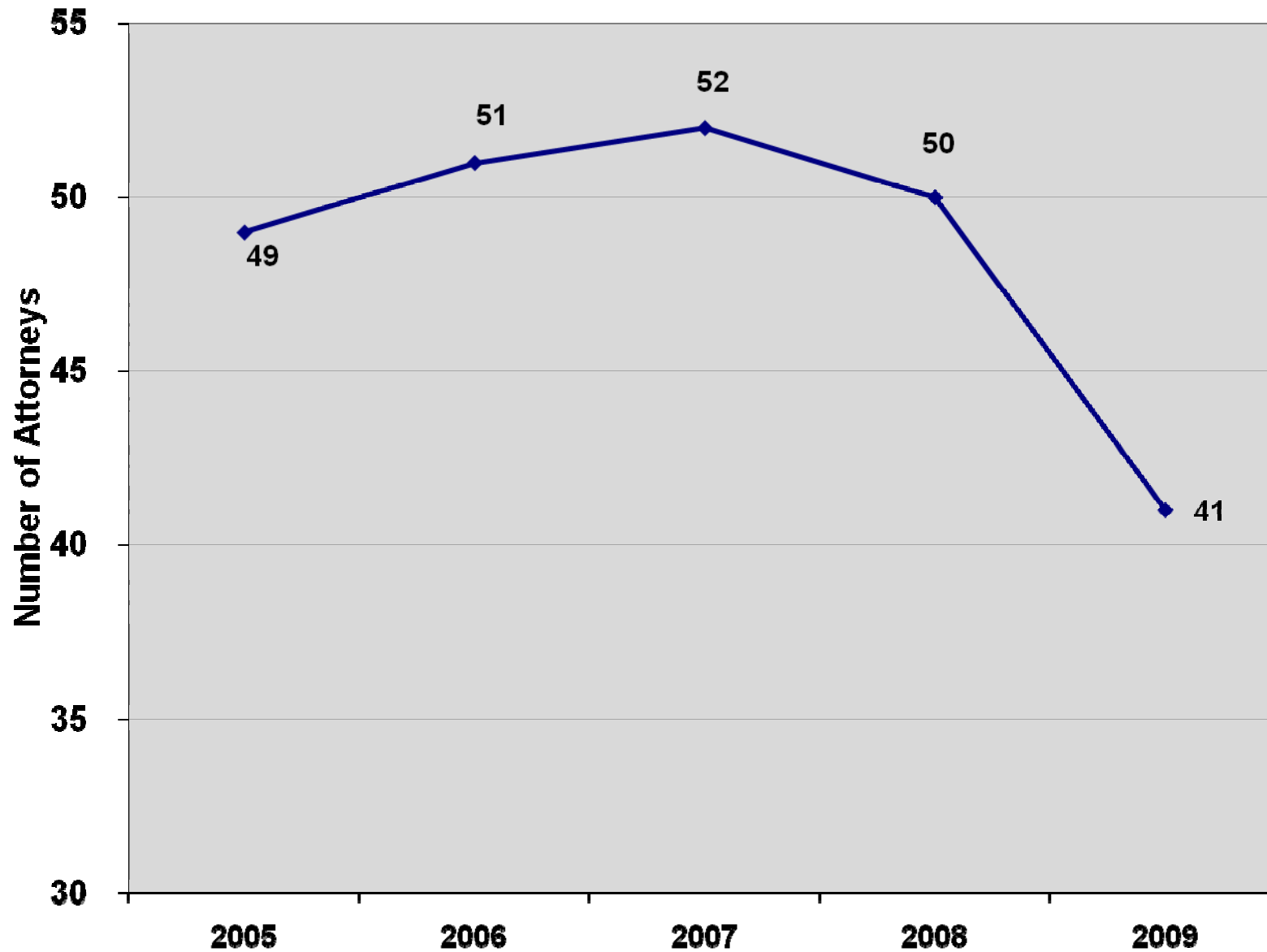
Historical Caseload Comparison



County Caseload Comparison



Number of Prosecutors



**Currently
of 49
positions 8
are vacant
resulting in
a total of
41 filled
positions**

2008-2009 Service Level Reductions

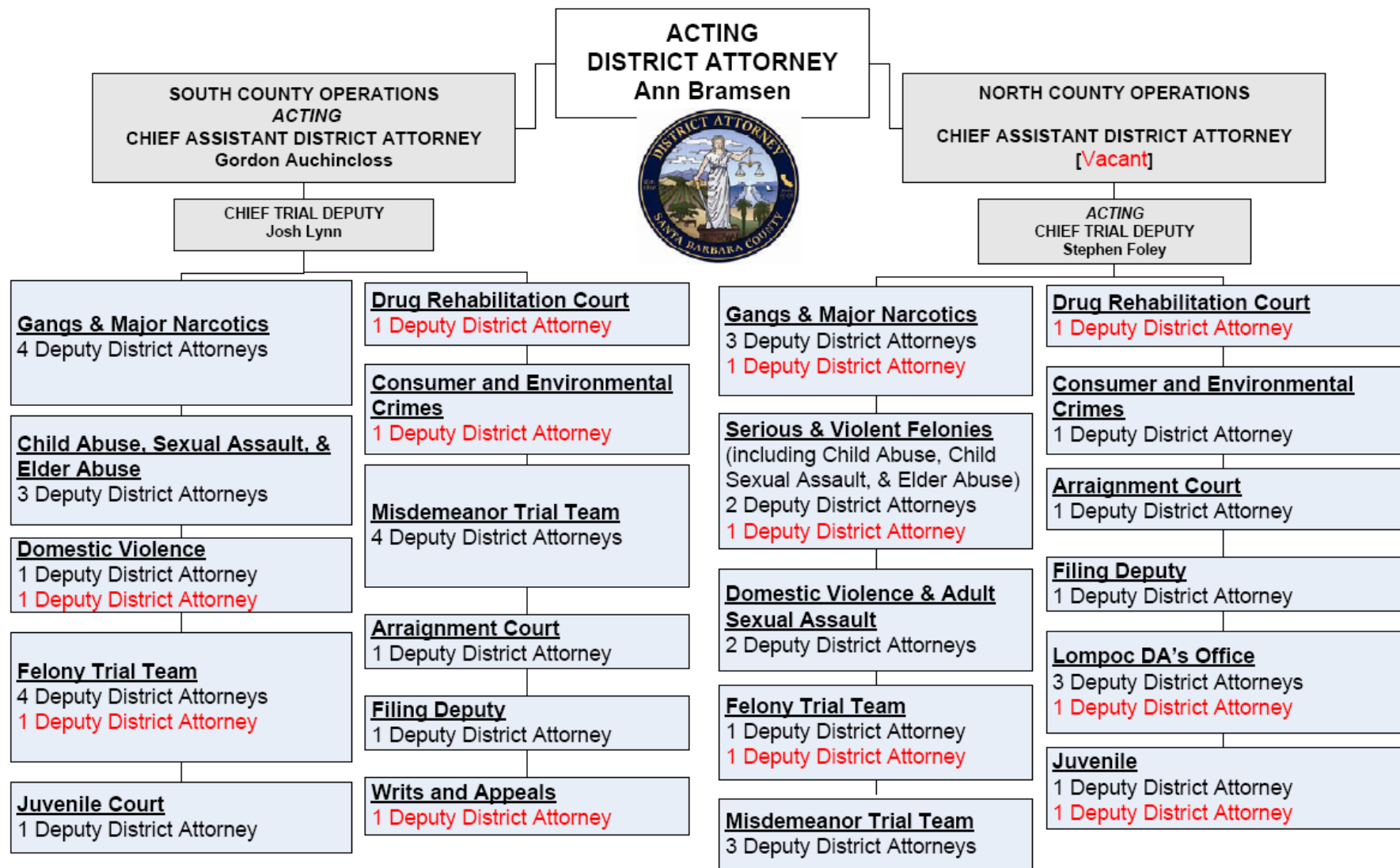
- *3 Prosecutors*
- *1 DA Investigator*
- *5 Truancy Supervisors and Social Workers*



2009-2010 Service Level Reductions

- *8 Prosecutors*
- *1 DA Investigator*
- *1 Truancy Supervisor*
- *1.5 Legal Office Professionals*





Sheriff: early inmate release is 'shades of things to come'

JAN 27 2010
BY COLBY FRAZIER
DAILY SOUND STAFF WRITER

bc

The premature release of 71 inmates from the Santa Barbara County Jail on Monday to comply with new state laws is just one of several schemes state leaders have developed to alleviate overcrowded prisons, Sheriff Bill Brown said.

"Unfortunately, I see this as an opening salvo in a series of hits that we're about to take," he told the Daily Sound in a telephone interview.

As first reported in yesterday's Daily Sound, by the end of this month, the number of prisoners released early from county jail will hit 128. In the short-term, this purge will alleviate overcrowding at the jail, which has been chronically overcrowded for decades.

But after a couple of months, Brown said conditions will level off, and the space on Calle Real will once again be over-booked.

The early release of these prisoners is tied to a new law that allows inmates to receive one-half day of credit for good



DAILY SOUND FILE PHOTO

Pictured above, inmates at the Santa Barbara County jail. The jail has been chronically overcrowded for years and due to new state laws is now forced to release prisoners early.



UPDATE

NEWS | LOCAL BEAT

Calif. Ordered to Get Rid of 40,000 Inmates

Governor to appeal to Supreme Court

By **DON THOMPSON**

Updated 8:41 AM PST, Wed, Aug 5, 2009



PRINT



EMAIL



SHARE



BUZZ UP!



TWITTER



FACEBOOK

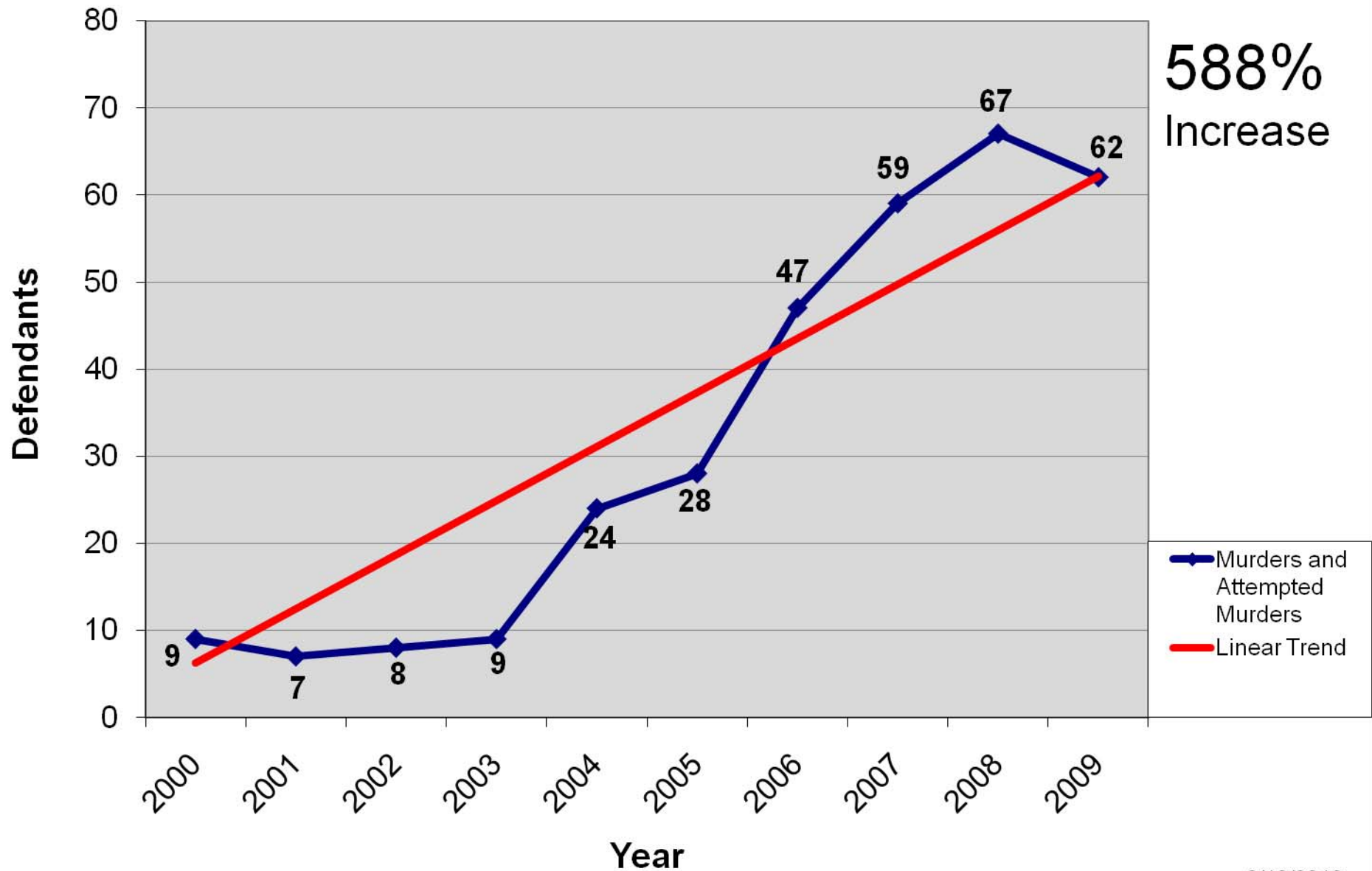


AP Photo/Brian Baer, Pool

A federal judicial panel has ordered [California](#) to reduce its prison population by 40,000 to improve treatment of ailing and mentally ill inmates.

The three-judge panel ruled Tuesday that cutting the number of inmates is the only way to bring the system's medical care up to adequate standards. The number of inmates will have to be reduced from about 150,000 to 110,000 over two years.

Murder and Attempted Murders 2000-2009

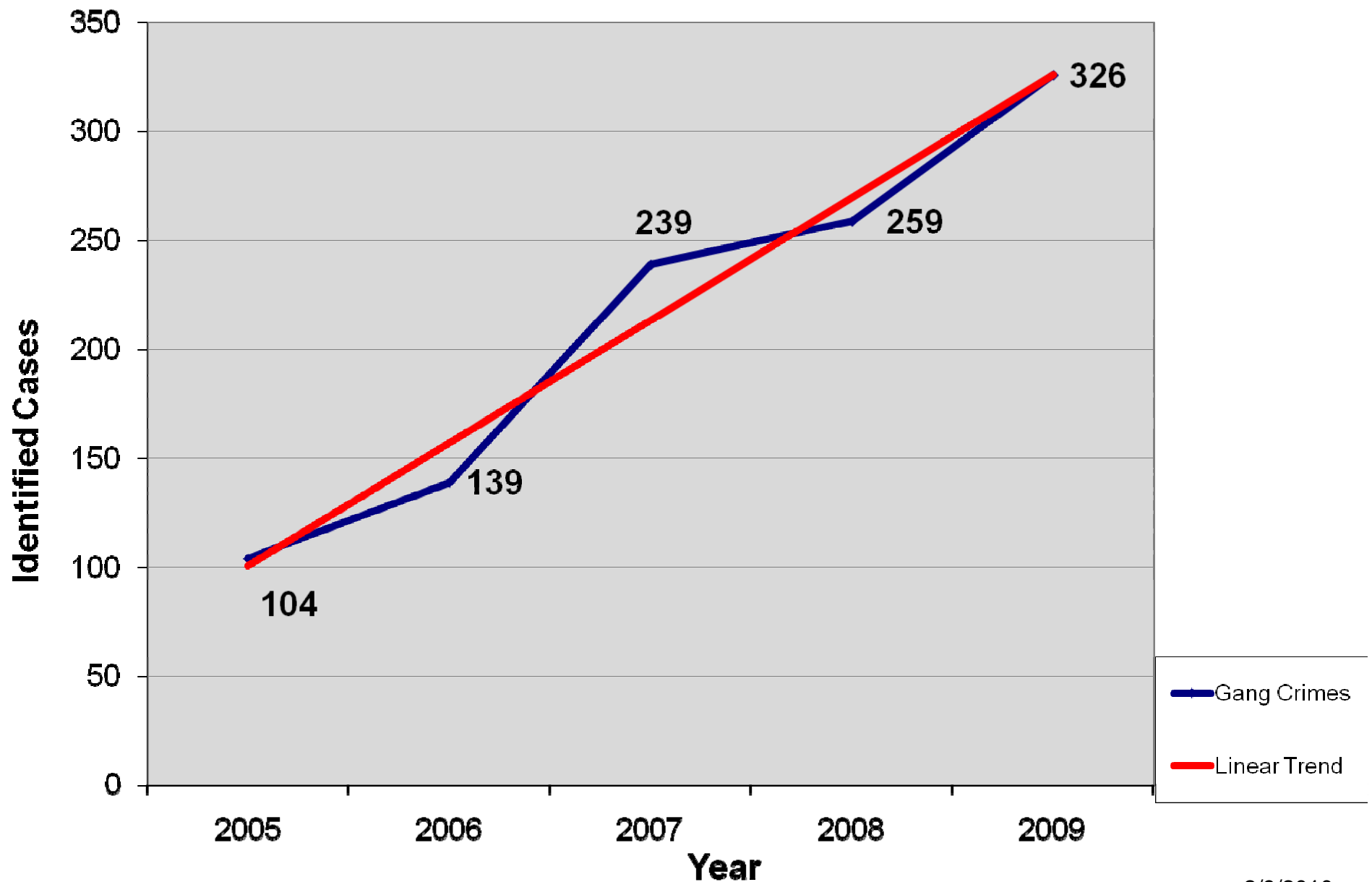


2010 OPEN MURDER CASES

58 Defendants

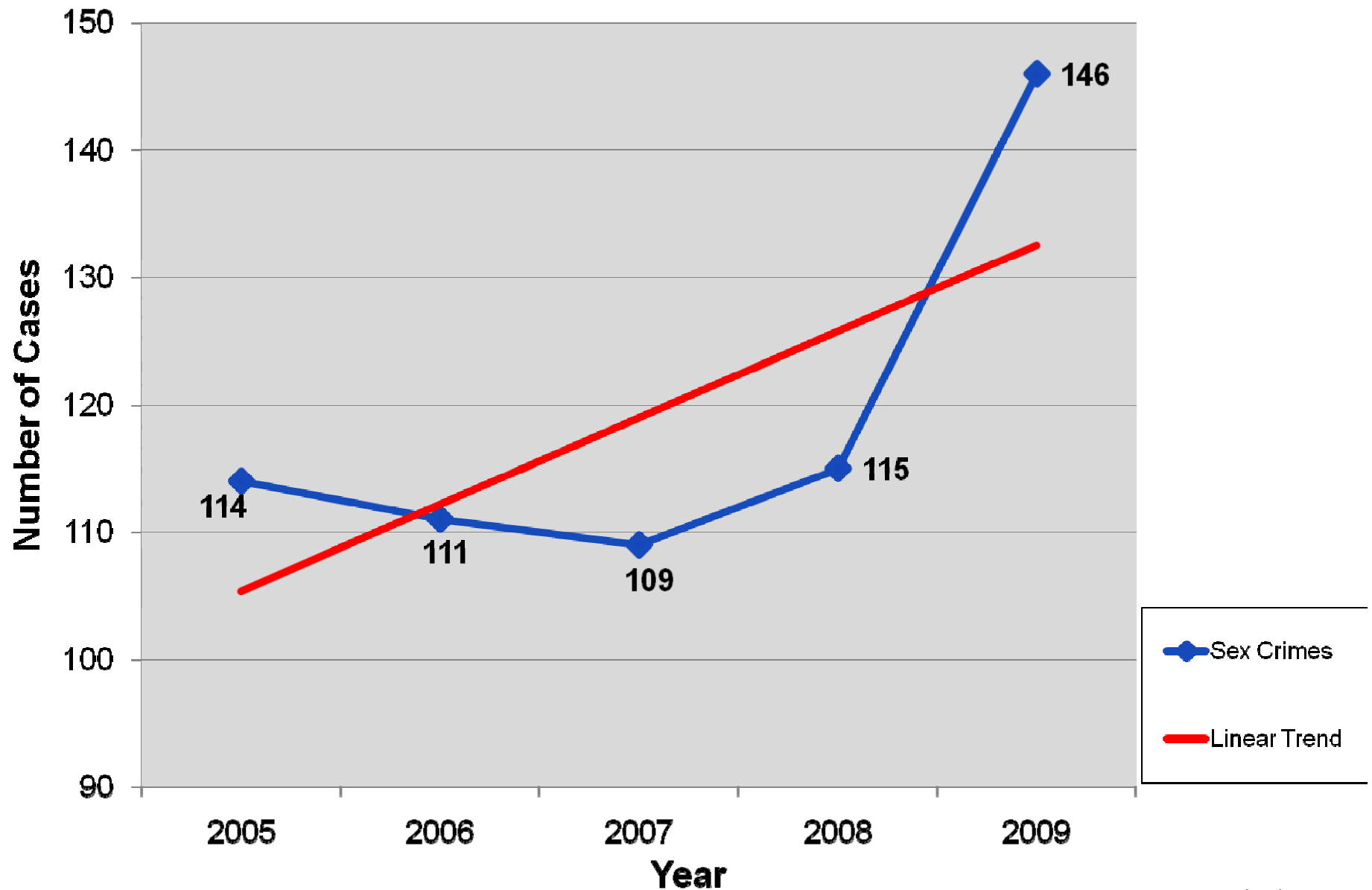
37 Murder Victims

213% Increase in Gang Crimes

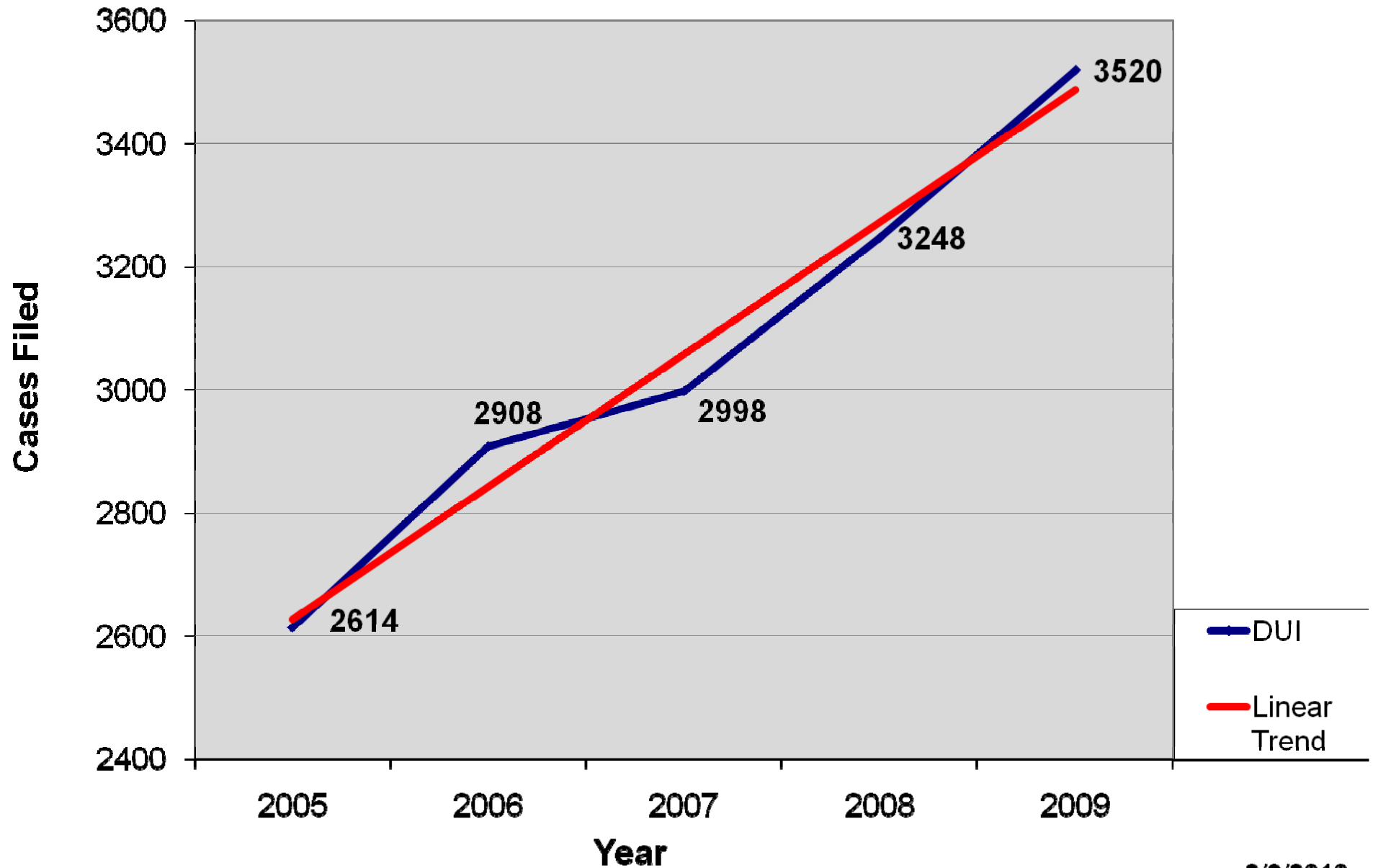


2/9/2010

28% Increase in Sex Crimes

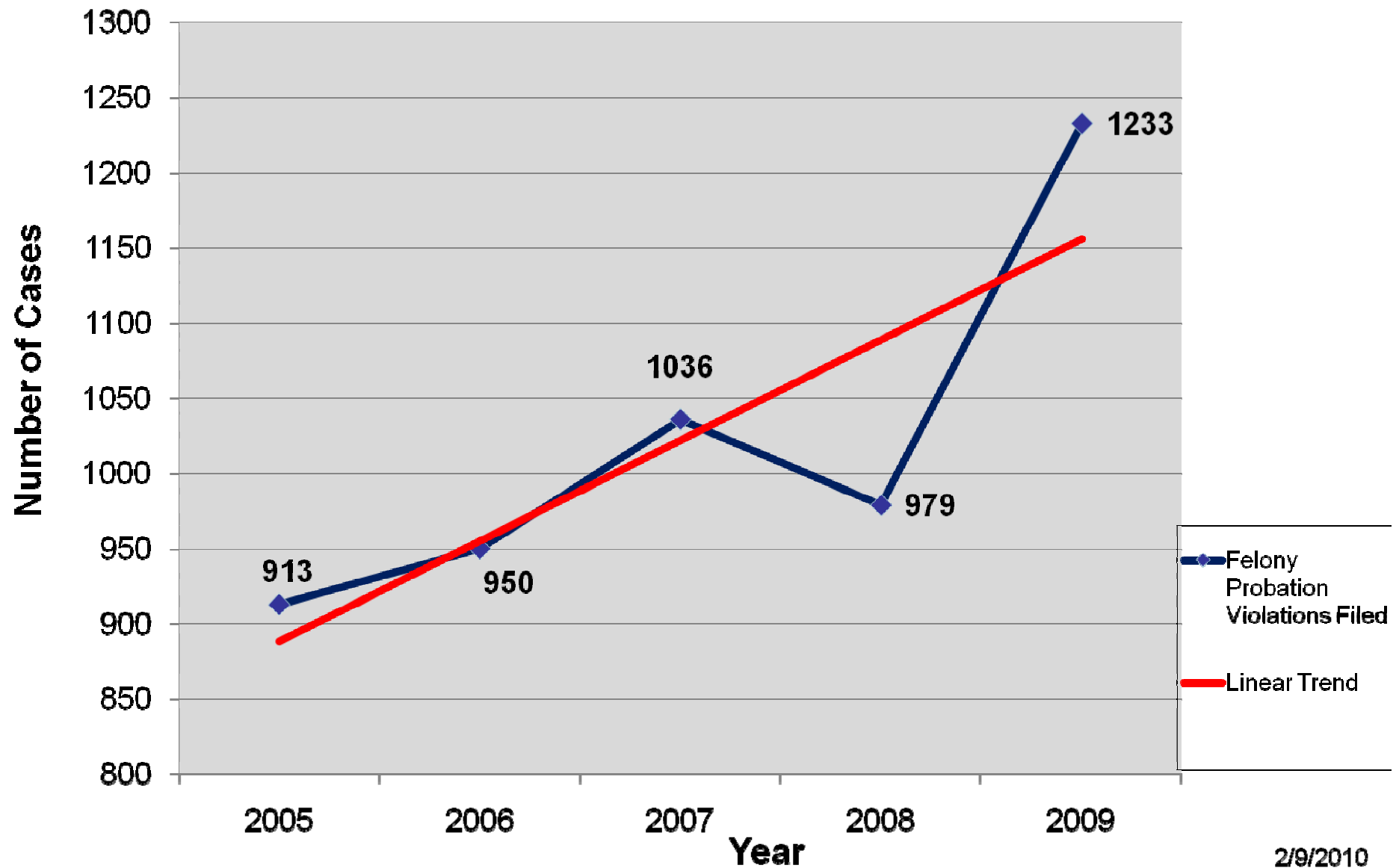


35% Increase in DUI Cases



2/9/2010

35% Increase in Felony Probation Violations



2008
FBI Violent Crime Statistics
Santa Maria, CA
(Per Capita)

- 6% higher than Los Angeles
- 12% higher than Bakersfield
- 22% higher than Fresno
- 65% higher than Oxnard
- 86% higher than Ventura
- 130% higher than San Luis Obispo

2008
FBI Murder Statistics
Santa Maria, CA
(Per Capita)

- 6% higher than Los Angeles
- 23% higher than Fresno
- 35% higher than Bakersfield
- 38% higher than Oxnard
- 437% higher than Ventura

>> [News](#) >> [Eye on Isla Vista](#)

Isla Vista Is Number One

For Property Crime, That Is

Saturday, January 2, 2010
by CAT NEUSHUL

Before you start thinking I'm going to be writing about the excellent surf we had a couple of days ago, or the incredible view from the cliffs as you look towards the Channel Islands, let me tell you straight out that Isla Vista's number 1 status is not a good thing. I.V. received the dubious honor of being named the most dangerous neighborhood in the entire nation for property crime. Local disc jockeys have been talking about it. My Facebook friends have posted comments about it. And my I.V. e-mail group sent me a link to it.

Article Tools

-  [Print friendly](#)
-  [E-mail story](#)
-  [Tip Us Off](#)
-  [iPod friendly](#)
-  [Comments](#)
(3)
-  [Bookmark This](#)

THESEARCH
ENGINE
PROS.COM

Potential Service Level Reductions

1. Eliminate Trial Support Specialist
2. Terminate Data-sharing Enhancements to automated case management system
3. Reduce staffing for Welfare Fraud
4. Eliminate Consumer Fraud & Environmental Prosecutions



Potential Service Level Reductions

- 5. Eliminate investigative services for misdemeanors
- 6. Reduce Victim/Witness Services
- 7. Eliminate investigative services for Misdemeanor Domestic Violence
- 8. Eliminate Victim/Witness Staff in Lompoc



Potential Service Level Reductions

9. Eliminate 5 Attorney positions vacated through Retirement Incentive Program
10. Reduce & consolidate Lompoc Office staff into Santa Maria Office
11. Eliminate attorney staffing from Arraignment Courts
12. Reduce misdemeanor Deputy DA's by 60%



Number of Prosecutors

