



# City of Goleta's Detachment Proposal

---

Presentation to the Board of Supervisors  
April 20, 2010



## Our Request

Choose Alternative #2:

Oppose the City of Goleta's detachment application and send a letter to LAFCO so stating.



## Goleta West Sanitary District

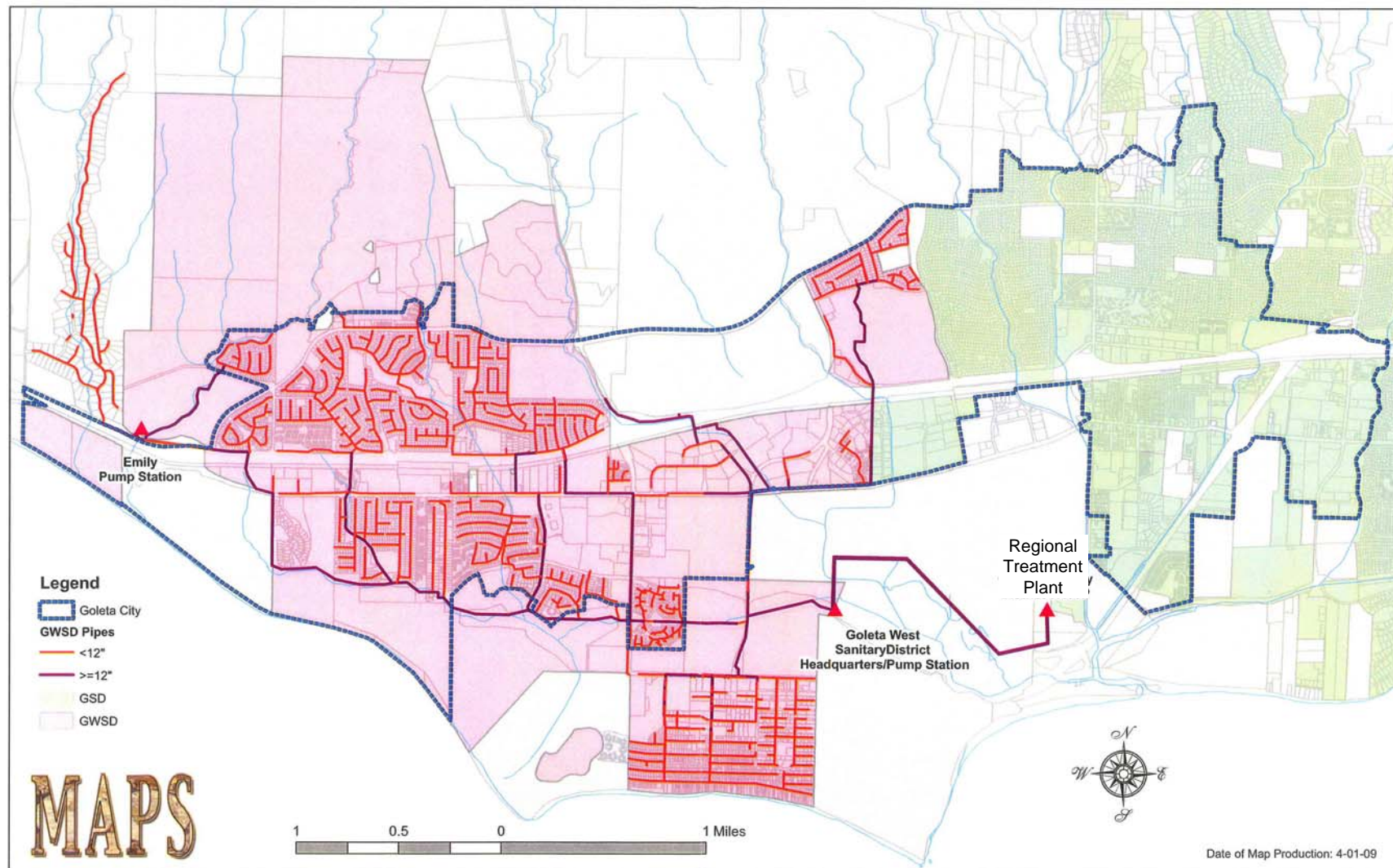
55 years serving western Goleta Valley

- ~6,000 residential & commercial customers
- Elected board of directors
- Responsible for:
  - Wastewater collection & treatment
  - Street sweeping
- Customer satisfaction is **high**





## GOLETA WEST SANITARY DISTRICT SEWER SYSTEM





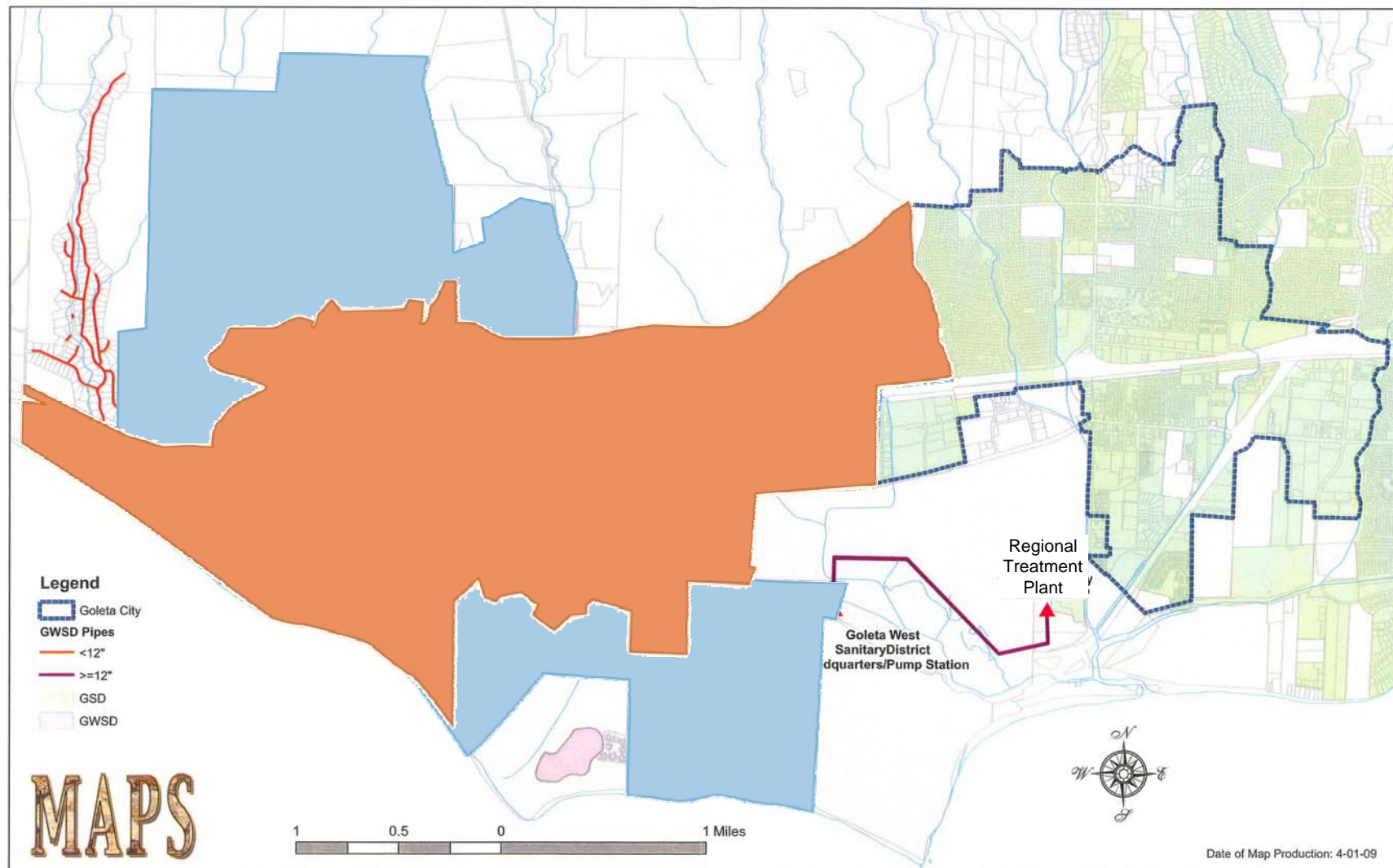
## City of Goleta's Detachment Proposal

- Removes all parcels within the city from GWSD
- City takes over all GWSD responsibilities to property within City:
  - Wastewater collection & treatment
  - Street sweeping
  - Operation & maintenance; capital projects
- GWSD continues to serve Isla Vista and EMID





## GOLETA WEST SANITARY DISTRICT SEWER SYSTEM





## Impacts of Detachment

### Utility Operations

City sewer service will shift from a sewer district with 55 years experience to a City with no experience

Three sewer service providers in place of two

Fragmented GWSD serving Isla Vista & EMID



## Impacts of Detachment

### Utility Operations (continued)

Sewer systems are expensive to operate, maintain and rehabilitate.

Deferred maintenance is not an option.

Service charges must be raised to backfill for diverted property taxes.





## Impacts of Detachment

### Service Charge Hikes

Significant sewer service charge hikes for residents and businesses in:

Isla Vista

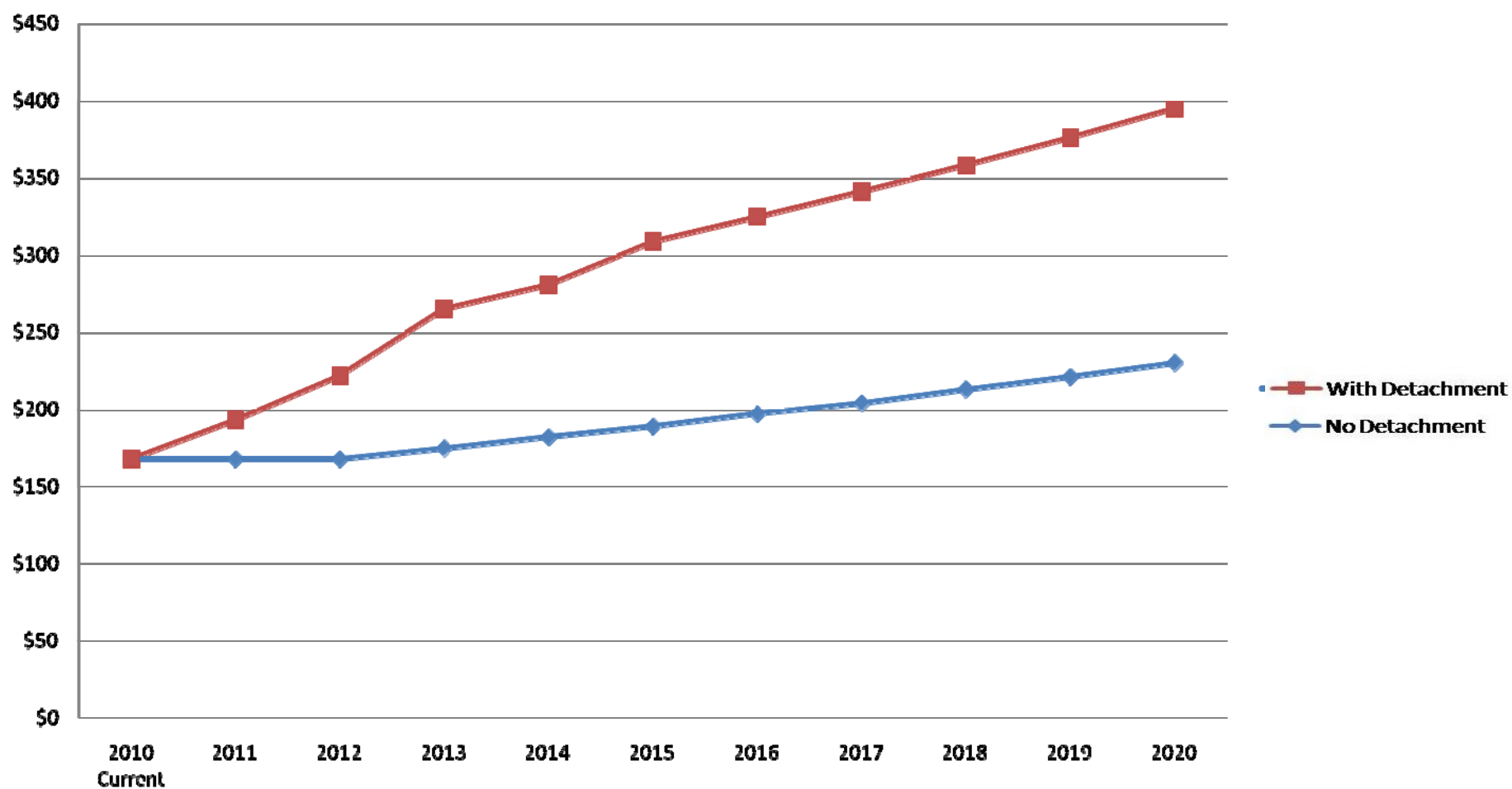
City of Goleta

EMID



# Impacts of Detachment

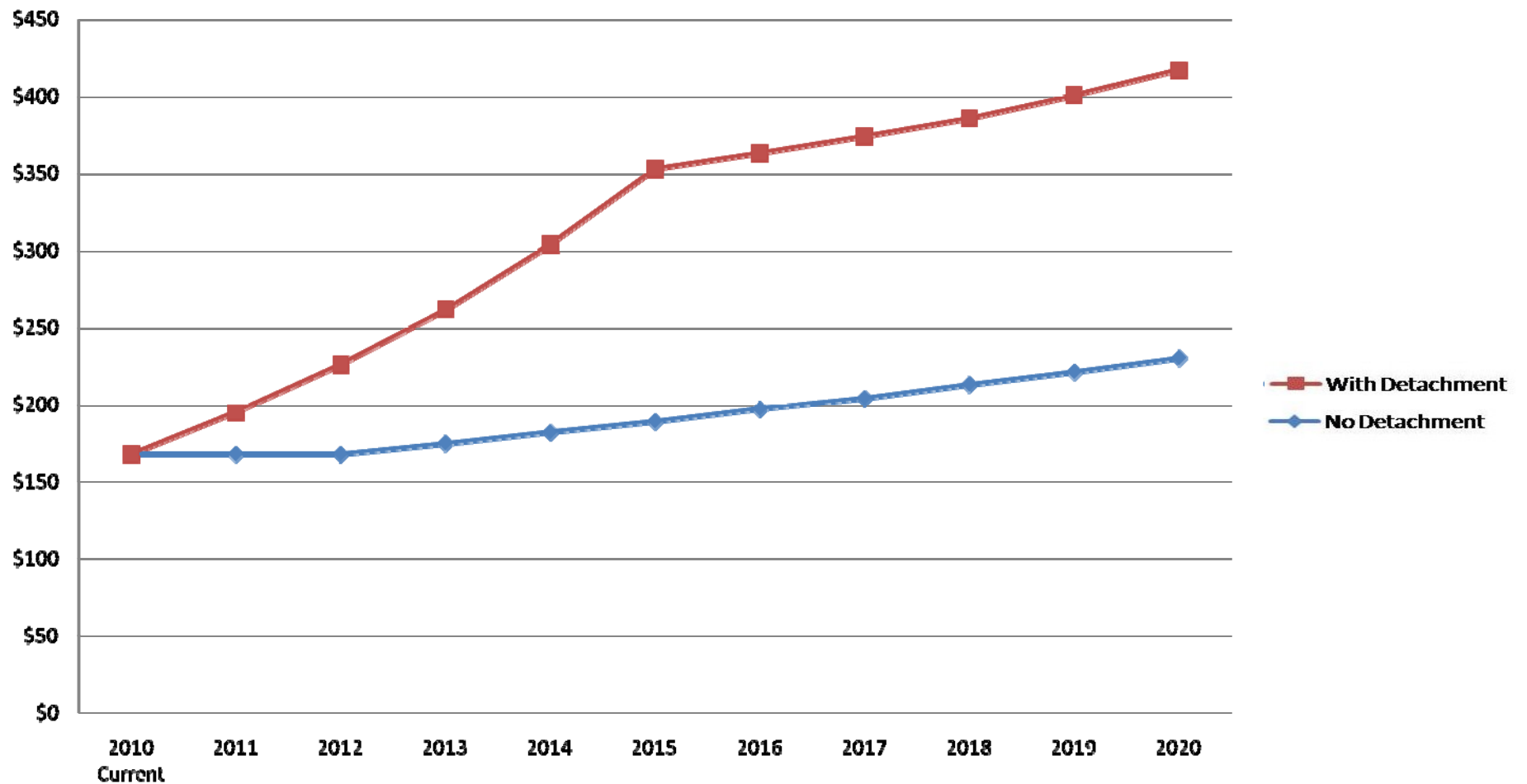
## Isla Vista Residential Sewer Charges





# Impacts of Detachment

## City of Goleta Residential Sewer Charges





## Detachment Will Cause a Drop in the Quality of Sewer Service

What if service charges cannot be increased because of ratepayer resistance?

Citizen resistance to raising taxes, fees and charges is growing in California and elsewhere.

If the ratepayers of the City veto a sewer service charge increase, the City will be left with an expensive sewer system and no way to pay for it.

Goleta West could face the same problem in Isla Vista.





## Detachment Will Cause a Drop in Street Sweeping Service

According to your staff report:

Street sweeping service “is likely to be curtailed or eliminated or the cost of service is likely to need to be absorbed by the city or county” (page 5).

Goleta Valley residents are not likely to accept a cut in services along with an increase in charges.



## Impacts of Detachment

### Environmental

- Ocean water quality will suffer if street sweeping is curtailed
  - See letter from Heal the Ocean
- Public health and safety will be compromised if sewer system failures begin to occur because funds are not available for maintenance



## The City's Stated Reasons for Proposing Detachment Are Not Credible

Is the City better equipped to protect local property taxes from a state raid? **NO.**

Is there an “inequity” between East Goleta and West Goleta that must be “cured”? **NO.**

Do City taxpayers subsidize Isla Vista? **NO.**



# The REAL REASON for City's Proposal is Its Desire to Capture the Property Taxes

Santa Barbara News-Press  
February 17, 2010

**“Goleta City Council Votes to  
Dip Into Reserves;  
A Proposed \$631,255 Hit Would  
Essentially Halve Total”**





## Detachment: The Wrong Road

**Note**: The staff report does not list supporting detachment as one viable option.

County staff apparently agrees that detachment is not a good solution for sewer service in the Goleta Valley.



## Detachment: The Wrong Road

Our Request: Reject Alternative 1, Take no action.

Detachment will:

- Increase sewer service charges
- Decrease sewer and street sweeping service
- Create more government instead of less
- Create environmental risks
- Entrench, not eliminate, a property tax anomaly



## Is Consolidation a Better Alternative?

County Staff has suggested consolidation of Goleta West and Goleta Sanitary Districts (Staff Report, Alternatives #3, #4, and #5).

- Would result in more orderly boundaries.
- Could result in a more logical use of property taxes.

**BUT:** The concept has its own complexities and would need to be studied.

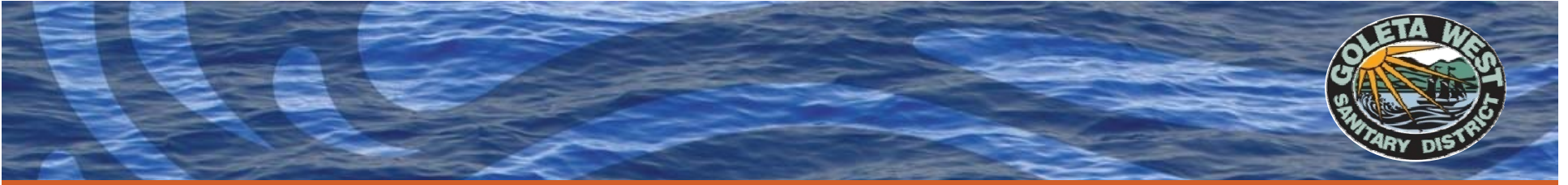


## Our Request

Choose Alternative #2:

Oppose the City of Goleta's detachment application and send a letter to LAFCO so stating.





Questions?

