

## NOTICE OF EXEMPTION

**TO:** Santa Barbara County Clerk of the Board of Supervisors

**FROM:** General Services Department – Support Services Division  
(Lead Department/Division)

Based on a preliminary review of the project the following activity is determined to be exempt from further environmental review requirements of the California Environmental Quality Act (CEQA) of 1970, as defined in the State and County Guidelines for the implementation of CEQA.

**APN(s):** 005-690-024

**Case No.:** Office of Real Estate Services File No. 003488

**LOCATION:** Ocean View Park, Via Real, Summerland, California

**PROJECT TITLE:** Summerland Sanitary District Sewer Line Easement at Ocean View Park

**PROJECT DESCRIPTION:** Realignment of existing sewer line for emergency and general maintenance and repairs accessibility on APN 005-690-024.

**EXEMPT STATUS:(Check One)**

- ☐ Ministerial
- ☐ Statutory
- ☒ X Categorical Exemption [Sec. 15301(b)]
- ☐ Emergency Project
- ☐ No Possibility of Significant Effect [Sec. 15061(b,3)]

**Cite specific CEQA Guideline Section:** 15301(b) Existing Facilities: "...consists of the operation, repair, maintenance...or minor alteration of existing public or private structures, facilities, mechanical equipment, or topographical features, involving negligible or no expansion of use beyond that existing at the time of the lead agency's determination...including, but not limited to, "(b) Existing facilities of both investor and publicly-owned utilities used to provide electric power, natural gas, sewerage, or other public utility services."

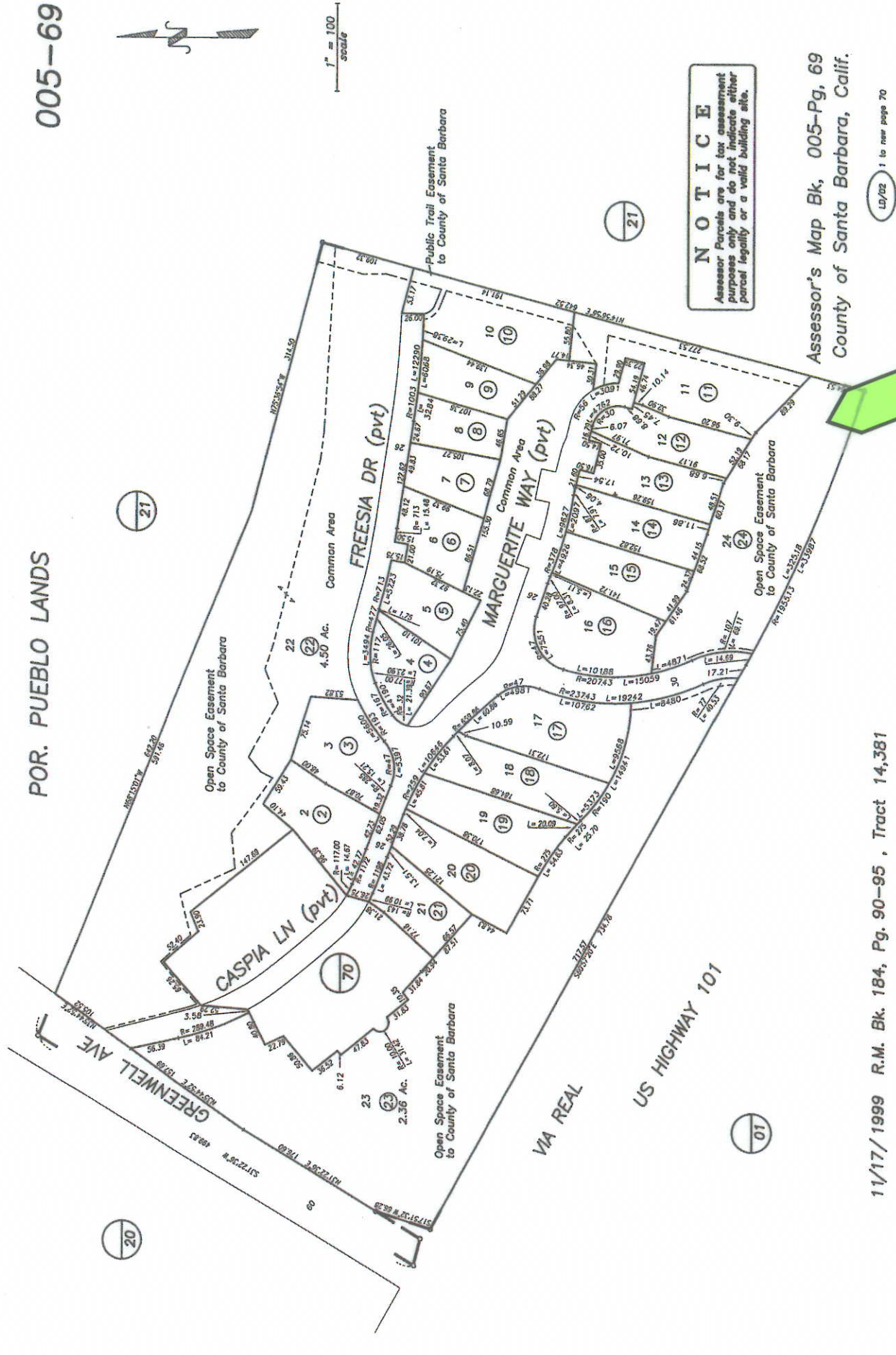
**Reasons to support exemption findings (attach additional material, if necessary):** The project consists of minor realignment of an existing sewer line in order to improve access for emergency and general maintenance.

 3.30.10  
\_\_\_\_\_  
Department Representative      Date

**NOTE:** A copy of this document must be posted with the County's Planning & Development Department at least 6 days prior to consideration of the activity by the decision-makers to comply with County CEQA guidelines and a copy must be filed with the County Clerk of the Board after project approval to begin a 35 day statute of limitations on legal challenges.

**Distribution:** \_\_\_\_\_  
Date filed with Planning & Development

\_\_\_\_\_  
Date filed with Clerk of Board



**NOTICE**  
Assessor's Parcels are for tax assessment purposes only and do not indicate either parcel legality or a valid building site.

Assessor's Map Bk. 005-Pg. 69  
County of Santa Barbara, Calif.

11/17/1999 R.M. Bk. 184, Pg. 90-95, Tract 14,381

10/02 1 to new page 70

EXHIBIT A  
Summerland Sanitary District  
Sewer Line Relocation Project

