

**ATTACHMENT 3**

**RESOLUTION OF THE BOARD OF SUPERVISORS  
COUNTY OF SANTA BARBARA, STATE OF CALIFORNIA**

IN THE MATTER OF ADOPTING SPECIFIC )  
AMENDMENTS TO THE LAND USE ELEMENT OF ) RESOLUTION NO. 16 - \_\_\_\_\_  
THE SANTA BARBARA COUNTY )  
COMPREHENSIVE PLAN BY AMENDING THE ) Case No.:  
COUNTY LAND USE MAP IN THE AREAS OF ) 16GPA-00000-00001  
SANTA MARIA VALLEY, LOMPOC VALLEY, )  
CUYAMA VALLEY, LOS PADRES NATIONAL )  
FOREST, SANTA YNEZ VALLEY, AND SOUTH )  
COAST FOOTHILL AREAS.

WITH REFERENCE TO THE FOLLOWING:

- A. On December 20, 1980, by Resolution No. 80-566, the Board of Supervisors adopted the Land Use Element of the Santa Barbara County Comprehensive Plan.
- B. In 1984, by Ordinance No. 3430, the Board of Supervisors repealed those portions of Ordinance 661 which were duplicated by similar provisions of Article III, including the repeal of duplicative zone districts, the permit processing procedures and conditionally permitted uses from Ordinance 661. Ordinance 661 agricultural zone districts that were not duplicates to the agricultural zone districts in Article III were retained.
- C. On October 9, 2007, by Resolution No. 07-307 the County Board of Supervisors adopted Phase I of the consistency rezone amendment and comprehensive plan amendment for Ordinance 661 zoned parcels in the Santa Maria Valley and San Antonio Creek Rural Regions.
- D. The proposed Ordinance 661 Consistency Rezone Phase II Project amendments are consistent with the Santa Barbara County Comprehensive Plan, including the requirements of California Planning, Zoning, and Development laws.
- E. In 2015, community meetings were held to determine the appropriate land use designations for lands being rezoned from Ordinance 661 to the Santa Barbara County Land Use and Development Code (LUDC).
- F. In 2016, a Negative Declaration for the Ordinance 661 Consistency Rezone Phase II Project was prepared and circulated to the appropriate agencies and public, and a public hearing was held to solicit public comments pursuant to the California Environmental Quality Act (CEQA).
- G. Citizens, California Native American Indian tribes, public agencies, public utility companies, and civic, education, and other community groups have been provided the opportunity for involvement in compliance with Government Code Section 65351.

- H. The County contacted and offered to conduct consultations with California Native American tribes in compliance with Government Code Sections 65352.3 and 65352.4.
- I. The County Planning Commission held duly noticed public hearings, as required by Government Code Section 65353, on the proposed amendments, at which hearings the amendments were explained and comments invited from the persons in attendance.
- J. The Planning Commission, after holding duly noticed public hearings on the above described amendments to the Comprehensive Plan, endorses and transmits to the Board of Supervisors said recommended amendments by resolution pursuant to Government Code Section 65354.
- K. The Board of Supervisors received and considered the Planning Commission's recommended actions and held a duly noticed public hearing, as required by Government Code Section 65355, on the proposed amendments at which hearing the amendments were explained and comments invited from the persons in attendance.

NOW, THEREFORE, IT IS HEREBY RESOLVED as follows:

- 1. The above recitations are true and correct.
- 2. The Board of Supervisors now finds, consistent with its authority in Government Code Section 65358, that it is in the public interest to provide orderly development of the County and important to the preservation of the health, safety, and general welfare of the residents of the County to:
  - a. Amend the existing County Land Use Map by:
    - i) Applying Agriculture I-40 (A-I-40), Agriculture II-40 (A-II-40), Agriculture II-100 (A-II-100), Agriculture II-320 (A-II-320), Mountainous Area 100 (MA-100), Mountainous Area 40 (MA-40), Mountainous Area 40/Educational (MA-40/Educational), Mountainous Area 320 (MA-320), Recreation/Open Space, Other Open Lands, Institution/Government, and Residential land use designations to Ordinance 661 lands outside existing and proposed Existing Developed Rural Neighborhood (EDRN) Boundaries in the Rural Area and applying Agriculture I-5 (A-I-5), Agriculture I-10 (A-I-10), Agriculture I-20 (A-I-20), Agriculture I-40 (A-I-40), and Residential land use designations, as appropriate, within each proposed EDRN, as well as the existing Ventucopa EDRN in the Cuyama Valley (Exhibit A);
    - ii) Applying the EDRN boundary lines around one developed rural neighborhood in the Santa Maria Valley, two developed rural neighborhoods in the Lompoc Valley, one developed rural neighborhood in the Santa Ynez Valley, and one developed rural neighborhood in the Cuyama Valley (Exhibit B - Figures 1-5);
    - iii) Amending the existing Ventucopa EDRN boundary line in the Cuyama Valley to remove two parcels (Exhibit B - Figure 6);

- iv) Amend the existing Cebada Canyon/Tularosa EDRN to include one interior parcel and portion of adjacent parcel (Exhibit B - Figure 7); and
  - v) Amending the Urban Boundary line east of the City of Lompoc near the Santa Ynez River and south of the City of Lompoc adjacent to San Miguelito Road (Exhibit B - Figures 8 and 9).
3. In compliance with the provisions of Government Code Section 65356, the above described changes are hereby adopted as amendments to the Land Use Element of the County Comprehensive Plan.
  4. Pursuant to provisions of Government Code Section 65357, the Clerk of the Board is hereby authorized to make the documents amending the Santa Barbara County Comprehensive Plan, including the diagrams and text, available to the public for inspection.
  5. The Chair and the Clerk of this Board are hereby authorized and directed to sign and certify all maps, documents, and other materials in accordance with this resolution to reflect the above described action by the Board of Supervisors.
  6. Pursuant to the provisions of Government Code Section 65357 the Clerk of the Board is hereby authorized and directed to send endorsed copies of said maps to the planning agency of each city within this County.

PASSED, APPROVED AND ADOPTED by the Board of Supervisors of the County of Santa Barbara, State of California, this \_\_\_\_\_ day of \_\_\_\_\_, 2016, by the following vote:

AYES:

NOES:

ABSTAIN:

ABSENT:

---

PETER ADAM, CHAIR  
BOARD OF SUPERVISORS  
COUNTY OF SANTA BARBARA

ATTEST:  
MONA MIYASATO, COUNTY EXECUTIVE OFFICER  
CLERK OF THE BOARD

By \_\_\_\_\_  
Deputy Clerk

APPROVED AS TO FORM:

MICHAEL C. GHIZZONI  
COUNTY COUNSEL

By \_\_\_\_\_  
Deputy County Counsel

Exhibit A:	Table of Amendments to the Santa Barbara County Comprehensive Plan Land Use Map
Exhibit B: Figure 1	Proposed EDRN: Road Number 3
Exhibit B: Figure 2	Proposed EDRN: Campbell Rd Area
Exhibit B: Figure 3	Proposed EDRN: Nojoqui
Exhibit B: Figure 4	Proposed EDRN: Ranchoil
Exhibit B: Figure 5	Proposed EDRN: Prell Road West
Exhibit B: Figure 6	Existing EDRN: Ventucopa
Exhibit B: Figure 7	Existing EDRN: Cebada Canyon/Tularosa
Exhibit B: Figure 8	Urban\Rural Boundary Line Adjustment - South of the City of Lompoc
Exhibit B: Figure 9	Urban \Rural Boundary Line Adjustment - East of the City of Lompoc

## **EXHIBIT A**

### Table of Amendments to the Santa Barbara County Comprehensive Plan Land Use Map

Available online at <http://longrange.sbcountyplanning.org/programs/661PhaseII/Exhibit A - Parcels amendments zoning and landuse ALL.pdf>



EXHIBIT A - AMENDMENTS TO THE SANTA BARBARA COUNTY COMPREHENSIVE PLAN LAND USE MAP BY PARCEL

<b>Proposed Parcel Changes By Existing Developed Rural Neighborhood (EDRN)</b>		
<b>CAMPBELL ROAD EDRN</b>		
<b>APN</b>	<b>Exist Land Use</b>	<b>Proposed Land Use</b>
099-110-023	A-II	A-I-10
099-110-024	A-II	A-I-10
099-110-043	A-II	A-I-10
099-110-048	A-II	A-I-10
099-110-049	A-II	A-I-10
099-110-051	A-II	A-I-10
099-110-052	A-II	A-I-10
099-110-053	A-II	A-I-10
099-160-012	A-II	A-I-10
099-160-013	A-II	A-I-10
099-160-018	A-II	A-I-10
099-160-042	A-II	A-I-10
099-160-046	A-II	A-I-10
099-160-049	A-II	A-I-10
099-160-050	A-II	A-I-10
099-160-051	A-II	A-I-10
099-160-052	A-II	A-I-10
099-160-065	A-II	A-I-10
099-160-069	A-II	A-I-10
099-160-071	A-II	A-I-10
099-160-075	A-II	A-I-10
099-160-082	A-II	A-I-10
099-160-085	A-II	A-I-10
099-160-087	A-II	A-I-10
099-160-090	A-II	A-I-10
099-160-092	A-II	A-I-10

<b>NOJOQUI EDRN</b>		
<b>APN</b>	<b>Exist Land Use</b>	<b>Proposed Land Use</b>
083-330-024	A-II	A-I-20
083-330-029	A-II	A-I-20
083-330-030	A-II	A-I-20
083-430-022	A-II	A-I-20
083-430-024	A-II	A-I-20
083-430-025	A-II	A-I-20
083-430-027	A-II	A-I-20
083-430-028	A-II	A-I-20
083-430-030	A-II	A-I-20

\* Parcels removed from Urban Area boundary

\*\* Parcel removed from EDRN boundary

<b>ROAD NUMBER 3 EDRN</b>		
<b>APN</b>	<b>Exist Land Use</b>	<b>Proposed Land Use</b>
099-141-008	A-II-40	A-I-5
099-141-009	A-II-40	A-I-5
099-141-010	A-II-40	A-I-5
099-141-011	A-II-40	A-I-5
099-141-012	A-II-40	A-I-5

<b>TULAROSA EDRN</b>		
<b>APN</b>	<b>Exist Land Use</b>	<b>Proposed Land Use</b>
099-440-018	RR-5	RR-5
099-650-035	RR-5	RR-5

<b>PRELL ROAD EDRN</b>		
<b>APN</b>	<b>Exist Land Use</b>	<b>Proposed Land Use</b>
128-098-006	A	RES-0.33
128-098-007	A	RES-0.33
128-098-008	A	RES-0.33
128-098-009	A	RES-0.33
128-098-010	A	RES-0.33
128-098-011	A	RES-0.33
128-098-012	A	RES-0.33
128-098-013	A	RES-0.33
128-098-014	A	RES-0.33
128-098-015	A	RES-0.33
128-098-016	A	RES-0.33
128-098-017	A	RES-0.33
128-098-018	A	RES-0.33
128-098-019	A	RES-0.33
128-098-020	A	RES-0.33
128-098-021	A	RES-0.33
128-098-022	A	RES-0.33
128-098-024	A	RES-0.33
128-098-025	A	RES-0.33
128-098-026	A	RES-0.33
128-098-027	A	RES-0.33
128-098-028	A	RES-0.33
128-098-029	A	RES-0.33
128-098-030	A	RES-0.33
128-098-031	A	RES-0.33

\* Parcel removed from Urban Area boundary  
 \*\* Parcel removed from EDRN boundary



<b>PRELL ROAD EDRN</b>		
<b>APN</b>	<b>Exist Land Use</b>	<b>Proposed Land Use</b>
128-098-032	A	RES-0.33
128-098-033	A	RES-0.33
128-098-034	A	RES-0.33
128-098-035	A	RES-0.33
128-098-037	A	RES-0.33
128-098-038	A	RES-0.33
128-098-039	A	RES-0.33
128-098-040	A	RES-0.33

<b>RANCHOIL EDRN</b>		
<b>APN</b>	<b>Exist Land Use</b>	<b>Proposed Land Use</b>
147-041-001	A-II	RES-3.3
147-041-002	A-II	RES-3.3
147-042-001	A-II	RES-3.3
147-042-002	A-II	RES-3.3
147-042-003	A-II	RES-3.3
147-042-004	A-II	RES-3.3
147-043-001	A-II	RES-3.3
147-043-002	A-II	RES-3.3
147-043-003	A-II	RES-3.3
147-043-004	A-II	RES-3.3
147-043-005	A-II	RES-3.3
147-043-006	A-II	RES-3.3
147-043-007	A-II	RES-3.3
147-043-008	A-II	RES-3.3
147-043-009	A-II	RES-3.3
147-043-010	A-II	RES-3.3
147-043-011	A-II	RES-3.3
147-043-012	A-II	RES-3.3
147-043-013	A-II	RES-3.3
147-043-014	A-II	RES-3.3
147-043-015	A-II	RES-3.3
147-044-001	A-II	RES-3.3
147-044-002	A-II	RES-3.3
147-044-003	A-II	RES-3.3
147-044-004	A-II	RES-3.3
147-044-005	A-II	RES-3.3
147-044-006	A-II	RES-3.3
147-044-007	A-II	RES-3.3
147-044-008	A-II	RES-3.3
147-044-009	A-II	RES-3.3
147-044-010	A-II	RES-3.3
147-044-011	A-II	RES-3.3
147-044-012	A-II	RES-3.3
147-044-013	A-II	RES-3.3
147-044-014	A-II	RES-3.3
147-044-015	A-II	RES-3.3
147-044-016	A-II	RES-3.3

\* Parcel removed from Urban Area boundary  
 \*\* Parcel removed from EDRN boundary

<b>RANCHOIL EDRN</b>		
<b>APN</b>	<b>Exist Land Use</b>	<b>Proposed Land Use</b>
147-044-017	A-II	RES-3.3
147-044-018	A-II	RES-3.3
147-044-019	A-II	RES-3.3
147-044-020	A-II	RES-3.3
147-044-021	A-II	RES-3.3
147-044-022	A-II	RES-3.3
147-044-023	A-II	RES-3.3
147-044-024	A-II	RES-3.3
147-044-025	A-II	RES-3.3
147-044-026	A-II	RES-3.3
147-044-027	A-II	RES-3.3
147-044-028	A-II	RES-3.3
147-044-029	A-II	RES-3.3
147-044-030	A-II	RES-3.3
147-044-031	A-II	RES-3.3
147-044-032	A-II	RES-3.3
147-044-033	A-II	RES-3.3
147-044-034	A-II	RES-3.3
147-044-035	A-II	RES-3.3
147-044-036	A-II	RES-3.3

\* Parcel removed from Urban Area boundary  
 \*\* Parcel removed from EDRN boundary

**PROPOSED PARCEL CHANGES OUTSIDE OF EXISTING AND PROPOSED EDRNS**

<b>RURAL REGIONS</b>		
<b>APN</b>	<b>Exist Land Use</b>	<b>Proposed Land Use</b>
021-010-016	MA-40/EDUCATIONAL FACILITY	MA-40/EDUCATIONAL FACILITY
021-010-017	MA-40/EDUCATIONAL FACILITY	MA-40/EDUCATIONAL FACILITY
021-010-024	OTHER OPEN LANDS	OTHER OPEN LANDS
021-010-025	OTHER OPEN LANDS	OTHER OPEN LANDS
021-020-001	OTHER OPEN LANDS	OTHER OPEN LANDS
021-020-002	OTHER OPEN LANDS	OTHER OPEN LANDS
021-020-004	MA-40	MA-40
021-020-005	MA-40	MA-40
021-020-006	MA-40	MA-40
021-020-007	MA-40	MA-40
021-020-008	MA-40	MA-40
021-020-009	MA-40	MA-40
021-020-010	MA-40	MA-40
021-020-012	MA-40	MA-40
023-330-036	MA-40	MA-40
023-330-068	MA-40	MA-40
079-020-001	A-II-100	A-II-100
079-020-003	A-II-100	A-II-100
079-020-005	A-II-100	A-II-100
079-020-009	A-II-100	A-II-100
079-020-010	A-II-100	A-II-100
079-020-011	A-II-100	A-II-100
079-020-012	A-II-100	A-II-100
079-030-002	A-II-100	A-II-100
079-030-006	A-II-100	A-II-100
079-030-007	A-II	A-II-100
079-030-010	A-II-100	A-II-100
079-030-012	A-II-100	A-II-100
079-030-013	A-II	A-II-100
079-030-014	A-II	A-II-100
079-030-015	A-II	A-II-100
079-030-016	A-II	A-II-100
079-030-017	A-II	A-II-100
079-030-018	A-II-100	A-II-100
079-030-021	A-II-100	A-II-100
079-030-022	OTHER OPEN LANDS	OTHER OPEN LANDS
079-030-023	A-II-100	A-II-100
079-030-024	OTHER OPEN LANDS	OTHER OPEN LANDS
079-040-003	A-II-100	A-II-100
079-050-001	A-II-100	A-II-100

\* Parcel removed from Urban Area boundary  
 \*\* Parcel removed from EDRN boundary

<b>RURAL REGIONS</b>		
<b>APN</b>	<b>Exist Land Use</b>	<b>Proposed Land Use</b>
079-050-002	A-II-100	A-II-100
079-050-002	A-II	A-II-100
079-050-003	A-II	A-II-100
079-050-004	A-II	A-II-100
079-050-007	A-II	A-II-100
081-020-005	A-II-100	A-II-100
081-020-015	A-II-100	RECREATION/OPEN SPACE
081-020-016	A-II-100	A-II-100
081-020-017	A-II-100	RECREATION/OPEN SPACE
081-020-019	A-II-100	A-II-100
081-020-028	A-II-100	A-II-100
081-030-005	A-II-100	A-II-100
081-030-007	A-II-100	A-II-100
081-030-012	A-I	A-I-40
081-030-012	A-II	A-II-100
081-030-013	A-I	A-I-40
081-030-013	A-II	A-II-100
081-040-002	A-II-100	A-II-100
081-040-005	A-II	A-II-100
081-040-030	A-II-100	A-II-100
081-040-040	A-II-100	A-II-100
081-040-050	A-I	A-I-40
081-040-050	A-II	A-II-100
081-040-051	A-I	A-I-40
081-040-051	A-II	A-II-100
081-050-001	A-II-100	A-II-100
081-050-002	A-II-100	A-II-100
081-050-005	A-II-100	A-II-100
081-050-008	A-II-100	A-II-100
081-050-009	A-II-100	A-II-100
081-050-010	A-II-100	A-II-100
081-060-001	A-II-100	A-II-100
081-060-003	A-II-100	A-II-100
081-060-004	A-II-100	A-II-100
081-060-005	A-II-100	A-II-100
081-060-006	A-II-100	A-II-100
081-060-007	A-II-100	A-II-100
081-070-005	A-II-100	A-II-100
081-090-001	A-II-100	A-II-100
081-090-002	A-II-100	A-II-100
081-090-011	A-II-100	A-II-100
081-090-012	A-II-100	A-II-100

\* Parcel removed from Urban Area boundary

\*\* Parcel removed from EDRN boundary

<b>RURAL REGIONS</b>		
<b>APN</b>	<b>Exist Land Use</b>	<b>Proposed Land Use</b>
083-010-051*	RES-4.6	A-II-100
083-010-051*	RESIDENTIAL RANCHETTE	A-II-100
083-010-052	A-II	A-II-100
083-010-052*	RESIDENTIAL RANCHETTE	A-II-100
083-010-053	A-II	A-II-100
083-010-054	A-II	A-II-100
083-010-055	A-II	A-II-100
083-010-056	A-II	A-II-100
083-010-057	A-II	A-II-100
083-030-001	A-II	A-II-100
083-030-005	A-II	A-II-100
083-030-006	A-II	A-II-100
083-030-011	A-II	A-II-100
083-030-012	A-II	A-II-100
083-030-013	A-II	A-II-100
083-030-027	A-II	A-II-100
083-030-031	A-II	A-II-100
083-030-034	A-II	A-II-100
083-030-035	A-II	A-II-100
083-060-013	A-II	A-II-100
083-060-019	A-II	A-II-100
083-060-020	A-II	A-II-40
083-060-020	A-II-40	A-II-40
083-070-021	A-II	A-II-100
083-070-022	A-II	A-II-100
083-080-002	A-II	A-II-100
083-100-006	A-II	A-II-100
083-110-001	A-II	A-II-100
083-110-004	A-II	A-II-100
083-110-005	RECREATION/OPEN SPACE	RECREATION/OPEN SPACE
083-110-006	A-II	A-II-100
083-110-007	A-II	A-II-100
083-110-008	A-II	A-II-100
083-110-010	A-II	A-II-100
083-110-012	A-II	A-II-100
083-120-005	A-II	A-II-100
083-120-008	A-II	A-II-100
083-120-009	A-II	A-II-100
083-120-010	A-II	A-II-100
083-120-011	A-II	A-II-100
083-140-008	A-II	A-II-100
083-150-003	A-II	RECREATION/OPEN SPACE

\* Parcel removed from Urban Area boundary  
 \*\* Parcel removed from EDRN boundary

<b>RURAL REGIONS</b>		
<b>APN</b>	<b>Exist Land Use</b>	<b>Proposed Land Use</b>
083-150-008	A-II-100	A-II-100
083-150-012	A-II-100	A-II-100
083-160-015	A-II	A-II-100
083-160-016	A-II	A-II-100
083-160-017	A-II	A-II-100
083-160-018	A-II	A-II-100
083-160-ROW	A-II	A-II-100
083-170-004	A-II	A-II-100
083-170-010	A-II	A-II-100
083-180-003	A-II-100	A-II-40
083-180-023	A-II-100	A-II-40
083-280-011	A-II	A-II-100
083-280-023	A-II	A-II-100
083-280-028	A-II	A-II-100
083-280-031	A-II	A-II-100
083-330-004	A-II	A-II-100
083-390-011	A-II	A-II-100
083-390-ROW	A-II	A-II-100
083-430-006	A-II	A-II-40
083-430-014	A-II	A-II-40
083-430-015	A-II	A-II-40
083-430-031	A-II	A-II-40
083-490-041	A-II	A-II-100
087-011-034*	A-II-40	A-II-40
087-011-062*	A-II-40	A-II-40
093-010-001	VAFB	A-II-100
093-010-003	A-II	A-II-40
093-010-004	A-II	A-II-40
093-010-009	A-II	A-II-100
093-030-017	A-II	A-II-40
093-030-020	A-II	A-II-40
093-030-022	A-II	A-II-100
093-030-023	A-II	A-II-100
093-040-001	A-II	A-II-40
093-040-004	A-II	A-II-40
093-040-005	A-II	A-II-40
093-040-006	A-II	A-II-40
093-040-028	A-II	A-II-40
093-040-030	A-II	A-II-40
093-040-033	A-II	A-II-40
093-051-001	A-II-40	A-II-40
093-051-004	A-II-40	A-II-40

\* Parcel removed from Urban Area boundary

\*\* Parcel removed from EDRN boundary

<b>RURAL REGIONS</b>		
<b>APN</b>	<b>Exist Land Use</b>	<b>Proposed Land Use</b>
093-051-005	A-II-40	A-II-40
093-051-007	A-II-40	A-II-40
093-051-009	A-II-40	A-II-40
093-051-010	A-II-40	A-II-40
093-051-019	A-II-40	A-II-40
093-060-007	A-II	A-II-100
093-060-014	A-II	A-II-100
093-060-025	A-II	A-II-100
093-060-027	A-II	A-II-40
093-060-029	A-II	A-II-100
093-060-031	A-II	A-II-40
093-070-015	A-II	A-II-40
093-070-021	A-II	A-II-40
093-070-029	A-II	A-II-40
093-070-030	A-II	A-II-40
093-070-053	A-II	A-II-40
093-080-009	A-II	A-II-100
093-080-013	A-II	A-II-100
093-090-004	A-II	A-II-40
093-090-007	A-II	A-II-40
093-090-031	A-II	A-II-40
093-090-034	A-II	A-II-40
093-100-002	A-II	A-II-100
093-100-006	A-II	A-II-100
093-100-007	A-II	A-II-100
093-100-012	A-II	A-II-100
093-100-015	A-II	A-II-100
093-100-027	A-II	A-II-100
093-100-030	A-II	A-II-100
093-100-032	A-II	A-II-100
093-100-038	A-II	A-II-100
093-100-039	A-II	A-II-100
093-100-051	A-II	A-II-100
093-100-052	A-II	A-II-100
093-100-057	A-II	A-II-100
093-100-058	A-II	A-II-100
093-100-063	A-II	A-II-100
093-100-064	A-II	A-II-100
093-100-067	A-II	A-II-100
093-100-069	A-II	A-II-100
093-100-070	A-II	A-II-100
093-100-071	A-II	A-II-100

\* Parcel removed from Urban Area boundary

\*\* Parcel removed from EDRN boundary

<b>RURAL REGIONS</b>		
<b>APN</b>	<b>Exist Land Use</b>	<b>Proposed Land Use</b>
093-100-075	A-II	A-II-100
093-100-076	A-II	A-II-100
093-111-007	A-II	A-II-40
093-111-008	A-II	A-II-40
093-111-009	A-II	A-II-40
093-111-010	A-II	A-II-40
093-111-011	A-II	A-II-40
093-111-012	A-II	A-II-40
093-111-015	A-II	A-II-100
093-111-016	A-II	A-II-100
093-111-019	A-II	A-II-100
093-111-025	A-II	A-II-100
093-111-026	A-II	A-II-100
093-111-028	A-II	A-II-100
093-111-029	A-II	A-II-100
093-111-030	A-II	A-II-100
093-111-033	A-II	A-II-100
093-111-034	A-II	A-II-100
093-111-037	A-II	A-II-100
093-111-038	A-II	A-II-100
093-111-039	A-II	A-II-100
093-111-049	A-II	A-II-40
093-111-050	A-II	A-II-40
093-111-051	A-II	A-II-40
093-120-005	A-II	A-II-100
093-140-013	A-II	A-II-100
093-140-014	A-II	A-II-100
093-140-016	A-II	A-II-100
095-020-001	VAFB	A-II-100
095-020-002	VAFB	A-II-100
095-020-003	VAFB	A-II-100
095-020-004	VAFB	A-II-100
095-020-010	VAFB	A-II-100
095-020-011	VAFB	A-II-100
095-020-012	VAFB	A-II-100
095-020-013	VAFB	A-II-100
095-030-006	VAFB	A-II-100
095-030-007	VAFB	A-II-100
095-030-009	VAFB	A-II-100
095-030-011	VAFB	A-II-100
095-040-002	VAFB	A-II-100
095-040-003	VAFB	A-II-100

\* Parcel removed from Urban Area boundary

\*\* Parcel removed from EDRN boundary



<b>RURAL REGIONS</b>		
<b>APN</b>	<b>Exist Land Use</b>	<b>Proposed Land Use</b>
095-050-003	VAFB	A-II-100
095-050-004	VAFB	A-II-100
095-050-005	VAFB	A-II-100
095-050-006	VAFB	A-II-100
095-050-007	VAFB	A-II-100
095-050-008	VAFB	A-II-100
095-050-011	VAFB	A-II-100
095-050-012	VAFB	A-II-100
095-050-013	VAFB	A-II-100
095-050-014	VAFB	A-II-100
095-050-017	VAFB	A-II-100
095-050-019	VAFB	A-II-100
095-080-002	VAFB	A-II-100
095-090-001	VAFB	A-II-100
095-100-001	VAFB	A-II-100
097-270-019	A-II-40	A-II-40
097-270-022	A-II-40	A-II-40
097-270-026	A-II-40	A-II-40
097-270-029	A-II-40	A-II-40
097-270-031	A-II-40	A-II-40
097-270-032	A-II-40	A-II-40
097-270-037	A-II-40	A-II-40
097-270-039	A-II-40	A-II-40
097-270-040	A-II-40	A-II-40
097-270-041	A-II-40	A-II-40
097-270-043	A-II-40	A-II-40
097-270-044	A-II-40	A-II-40
097-270-055	A-II-40	A-II-40
097-280-002	A-II-40	A-II-40
097-280-006	A-II-40	A-II-40
097-280-009	A-II-40	A-II-40
097-280-011	A-II-40	A-II-40
097-280-012	A-II-40	A-II-40
097-280-013	A-II-40	A-II-40
097-280-015	A-II-40	A-II-40
097-280-016	A-II-40	A-II-40
097-280-017	A-II-40	A-II-40
097-280-020	A-II-40	A-II-40
097-350-016	A-II	A-II-100
097-350-018	A-II-100	A-II-100
097-350-018	A-II	A-II-100
097-350-019	A-II-100	A-II-100

\* Parcel removed from Urban Area boundary

\*\* Parcel removed from EDRN boundary

<b>RURAL REGIONS</b>		
<b>APN</b>	<b>Exist Land Use</b>	<b>Proposed Land Use</b>
097-350-020	A-II-100	OTHER OPEN LANDS
097-350-021	A-II-100	OTHER OPEN LANDS
097-350-021	A-II	OTHER OPEN LANDS
097-350-021*	RES-12.3	OTHER OPEN LANDS
097-350-022	A-II	OTHER OPEN LANDS
097-360-010	A-II-100	A-II-100
097-360-010	A-II	A-II-100
097-360-011	A-II-100	OTHER OPEN LANDS
097-371-013	INSTITUTION/GOVERNMENT FACILITY	INSTITUTION/GOVERNMENT FACILITY
097-371-047	A-II-100	OTHER OPEN LANDS
097-371-047*	RES-12.3	OTHER OPEN LANDS
097-371-048	A-II-100	OTHER OPEN LANDS
097-371-049	A-II-100	OTHER OPEN LANDS
097-380-006	A-II-100	RECREATION/OPEN SPACE
097-380-007	A-II-100	A-II-100
097-380-007	RES-4.6	RES-4.6
097-380-009	A-II-100	A-II-100
097-380-010	A-II-100	A-II-100
097-380-011	A-II-100	A-II-100
097-380-014	RECREATION/OPEN SPACE	RECREATION/OPEN SPACE
097-380-017	A-II-100	A-II-100
097-380-019	A-II-100	A-II-100
097-380-020	A-II-100	A-II-100
097-380-031	A-II-100	OTHER OPEN LANDS
097-380-034	A-II-100	OTHER OPEN LANDS
097-380-038	A-II-100	A-II-100
097-380-039	A-II-100	RECREATION/OPEN SPACE
097-380-040	A-II-100	RECREATION/OPEN SPACE
097-380-042	A-II-100	OTHER OPEN LANDS
097-380-043	A-II-100	A-II-100
099-010-008	A-II	A-II-100
099-010-011	A-II	A-II-100
099-010-054	A-II	A-II-100
099-010-055	A-II	OTHER OPEN LANDS
099-010-056	A-II	A-II-100
099-010-057	A-II	OTHER OPEN LANDS
099-010-058	A-II	A-II-100
099-060-002	A-II	A-II-100
099-060-004	A-II	A-II-100
099-060-007	A-II	A-II-100
099-060-009	A-II	A-II-100
099-060-011	A-II	A-II-100

\* Parcel removed from Urban Area boundary

\*\* Parcel removed from EDRN boundary

<b>RURAL REGIONS</b>		
<b>APN</b>	<b>Exist Land Use</b>	<b>Proposed Land Use</b>
099-060-012	A-II	A-II-100
099-060-014	A-II	A-II-100
099-060-017	RECREATION/OPEN SPACE	RECREATION/OPEN SPACE
099-060-019	A-II	A-II-100
099-060-023	A-II	A-II-100
099-060-026	A-II	A-II-100
099-060-027	A-II	A-II-100
099-060-028	A-II	A-II-100
099-060-029	A-II	A-II-100
099-060-030	A-II	A-II-100
099-060-032	A-II	A-II-100
099-060-033	A-II	A-II-100
099-060-034	A-II	A-II-100
099-060-035	A-II	A-II-100
099-070-003	A-II	A-II-100
099-070-004	A-II	A-II-100
099-070-005	A-II	A-II-100
099-070-007	A-II	A-II-100
099-070-008	A-II	A-II-100
099-070-009	A-II	A-II-100
099-070-011	A-II	A-II-100
099-070-012	A-II	A-II-100
099-070-014	A-II	A-II-100
099-070-017	A-II	A-II-100
099-070-018	A-II	A-II-100
099-070-019	A-II	A-II-100
099-070-021	A-II	A-II-100
099-070-022	A-II	A-II-100
099-070-023	A-II	A-II-100
099-070-024	A-II	A-II-100
099-070-026	A-II	A-II-100
099-070-027	A-II	A-II-100
099-070-029	A-II	A-II-100
099-070-032	A-II	A-II-100
099-070-033	A-II	A-II-100
099-070-034	A-II	A-II-100
099-070-035	A-II	A-II-100
099-070-037	A-II	A-II-100
099-070-038	A-II	A-II-100
099-070-039	A-II	A-II-100
099-070-040	A-II	A-II-100
099-070-041	A-II	A-II-100

\* Parcel removed from Urban Area boundary

\*\* Parcel removed from EDRN boundary

<b>RURAL REGIONS</b>		
<b>APN</b>	<b>Exist Land Use</b>	<b>Proposed Land Use</b>
099-080-001	A-II	A-II-100
099-080-005	A-II	A-II-100
099-090-003	A-II-100	A-II-320
099-100-003	A-II	A-II-100
099-100-007	A-II	A-II-100
099-100-013	A-II	A-II-100
099-100-016	A-II	A-II-100
099-100-026	A-II	A-II-100
099-100-027	A-II	A-II-100
099-100-028	A-II	A-II-100
099-100-029	A-II	A-II-100
099-100-030	A-II	A-II-100
099-100-043	A-II	A-II-100
099-100-045	A-II	A-II-100
099-100-047	A-II-100	A-II-100
099-100-059	A-II	A-II-100
099-100-060	A-II	A-II-100
099-110-002	A-II	A-II-100
099-110-003	A-II	A-II-100
099-110-004	A-II	A-II-100
099-110-005	A-II	A-II-100
099-110-006	A-II	A-II-100
099-110-009	A-II	A-II-100
099-110-010	A-II	A-II-100
099-110-011	A-II	A-II-100
099-110-012	A-II	A-II-100
099-110-013	A-II	A-II-100
099-110-014	A-II	A-II-100
099-110-015	A-II	A-II-100
099-110-016	A-II	A-II-100
099-110-018	A-II	A-II-100
099-110-019	A-II	A-II-100
099-110-020	A-II	A-II-100
099-110-028	A-II	A-II-100
099-110-029	A-II	A-II-100
099-110-033	A-II	A-II-100
099-110-034	A-II	A-II-100
099-110-035	A-II	A-II-100
099-110-036	A-II	A-II-100
099-110-038	A-II	A-II-100
099-110-045	A-II	A-II-100
099-110-050	A-II	A-II-100

\* Parcel removed from Urban Area boundary

\*\* Parcel removed from EDRN boundary

<b>RURAL REGIONS</b>		
<b>APN</b>	<b>Exist Land Use</b>	<b>Proposed Land Use</b>
099-110-055	A-II	A-II-100
099-110-056	A-II	A-II-100
099-110-057	A-II	A-II-100
099-110-058	A-II	A-II-100
099-110-059	A-II	A-II-100
099-110-060	A-II	A-II-100
099-110-061	A-II	A-II-100
099-120-001	A-II	A-II-100
099-120-002	A-II	A-II-100
099-120-003	A-II	A-II-100
099-120-004	A-II	A-II-100
099-120-006	A-II	A-II-100
099-120-010	A-II	A-II-100
099-120-012	A-II	A-II-100
099-120-013	A-II	A-II-100
099-120-015	A-II	A-II-100
099-120-023	A-II	A-II-100
099-131-001	RECREATION/OPEN SPACE	RECREATION/OPEN SPACE
099-131-002	RECREATION/OPEN SPACE	RECREATION/OPEN SPACE
099-131-008	A-II-100	A-II-100
099-131-009	A-II-100	A-II-100
099-131-010	A-II-100	A-II-100
099-131-012	A-II-100	A-II-100
099-131-018	A-II-100	A-II-100
099-131-019	A-II-100	A-II-100
099-131-022	A-II-100	A-II-100
099-131-027	A-II-40	A-II-100
099-131-027	A-II-100	A-II-100
099-131-028	A-II-100	A-II-100
099-131-029	A-II-100	A-II-100
099-131-031	A-II-40	A-II-100
099-141-001	A-II-40	A-II-40
099-141-002	A-II-40	A-II-40
099-141-003	A-II-40	A-II-40
099-141-004	A-II-40	A-II-40
099-141-006*	A-II-40	A-II-40
099-141-007	A-II-40	A-II-40
099-141-013	A-II-40	A-II-40
099-141-014	A-II-40	A-II-40
099-141-015	A-II-40	A-II-40
099-141-018	A-II-40	A-II-40
099-141-019	A-II-40	A-II-40

\* Parcel removed from Urban Area boundary  
 \*\* Parcel removed from EDRN boundary

<b>RURAL REGIONS</b>		
<b>APN</b>	<b>Exist Land Use</b>	<b>Proposed Land Use</b>
099-141-020	A-II-40	A-II-40
099-141-026*	A-II-40	A-II-40
099-141-030*	A-II-40	A-II-40
099-150-046	A-II	A-II-40
099-150-046	A-II-40	A-II-40
099-150-054	A-II-40	A-II-40
099-150-055	A-II-40	A-II-40
099-150-056	A-II-40	A-II-40
099-150-057	A-II-40	A-II-40
099-150-060	A-II-40	A-II-40
099-150-061	A-II-40	A-II-40
099-150-062	A-II-40	A-II-40
099-150-064	A-II-40	A-II-40
099-160-008	A-II	A-II-100
099-160-011	A-II	A-II-100
099-160-032	A-II	A-II-100
099-160-034	A-II	A-II-100
099-160-055	A-II	A-II-100
099-160-059	A-II	A-II-100
099-160-061	A-II	A-II-100
099-160-073	A-II	A-II-100
099-160-081	A-II	A-II-100
099-160-086	A-II	A-II-100
099-160-089	A-II	A-II-100
099-160-091	A-II	A-II-100
099-170-003	A-II	A-II-100
099-170-017	A-II	A-II-100
099-170-040	A-II	A-II-100
099-170-045	A-II	A-II-100
099-170-046	A-II	A-II-100
099-170-047	A-II	A-II-100
099-180-004	A-II	A-II-100
099-180-007	A-II	A-II-100
099-180-009	A-II	A-II-100
099-180-013	A-II	A-II-100
099-180-014	A-II	A-II-100
099-180-015	A-II	A-II-100
099-180-020	A-II	A-II-100
099-180-021	A-II	A-II-100
099-200-002	A-II	A-II-100
099-200-006	A-II	A-II-100
099-200-012	A-II	A-II-100

\* Parcel removed from Urban Area boundary

\*\* Parcel removed from EDRN boundary

<b>RURAL REGIONS</b>		
<b>APN</b>	<b>Exist Land Use</b>	<b>Proposed Land Use</b>
099-200-014	A-II	A-II-100
099-200-015	A-II	A-II-100
099-200-019	A-II	A-II-100
099-200-021	A-II	A-II-100
099-200-023	A-II	A-II-100
099-200-026	A-II	A-II-100
099-200-027	A-II	A-II-100
099-200-028	A-II	A-II-100
099-200-030	A-II	A-II-100
099-200-031	A-II	A-II-100
099-200-032	A-II	A-II-100
099-200-033	A-II	A-II-100
099-200-034	A-II	A-II-100
099-200-035	A-II	A-II-100
099-200-036	A-II	A-II-100
099-200-037	A-II	A-II-100
099-200-038	A-II	A-II-100
099-200-041	A-II	A-II-100
099-200-043	A-II	A-II-100
099-200-045	A-II	A-II-100
099-200-047	A-II	A-II-100
099-200-048	A-II	A-II-100
099-200-049	A-II	A-II-100
099-200-050	A-II	A-II-100
099-200-051	A-II	A-II-100
099-200-052	A-II	A-II-100
099-200-053	A-II	A-II-100
099-200-062	A-II	A-II-100
099-200-063	A-II	A-II-100
099-200-064	A-II	A-II-100
099-200-065	A-II	A-II-100
099-200-066	A-II	A-II-100
099-200-081	A-II	A-II-100
099-200-082	A-II	A-II-100
099-210-010	A-II	A-II-100
099-210-017	A-II	A-II-100
099-210-046	A-II	A-II-100
099-210-053	A-II	A-II-100
099-210-054	A-II	A-II-100
099-210-056	A-II	A-II-100
099-210-057	A-II	A-II-100
099-210-061	A-II	A-II-100

\* Parcel removed from Urban Area boundary

\*\* Parcel removed from EDRN boundary

<b>RURAL REGIONS</b>		
<b>APN</b>	<b>Exist Land Use</b>	<b>Proposed Land Use</b>
099-210-062	A-II	A-II-100
099-210-069	A-II	A-II-100
099-210-071	A-II	A-II-100
099-210-073	A-II	A-II-100
099-210-074	A-II	A-II-100
099-210-075	A-II	A-II-100
099-220-020	A-II	A-II-100
099-230-007	A-II	A-II-100
099-230-021	A-II	A-II-100
099-230-022	A-II	A-II-100
099-230-026	A-II	A-II-100
099-230-028	A-II	A-II-100
099-230-029	A-II	A-II-100
099-230-032	A-II	A-II-100
099-350-017	RECREATION/OPEN SPACE	RECREATION/OPEN SPACE
099-410-001	A-II	A-II-100
099-410-002	A-II	A-II-100
099-410-003	A-II	A-II-100
099-410-004	A-II	A-II-100
099-410-006	A-II	A-II-100
099-410-007	A-II	A-II-100
099-420-001	A-II-40	A-II-40
099-420-002	A-II-40	A-II-40
099-420-003	A-II-40	A-II-40
099-420-004	A-II-40	A-II-40
099-420-005	A-II-40	A-II-40
099-420-006	A-II-40	A-II-40
099-420-008	A-II-40	A-II-40
099-420-009	A-II-40	A-II-40
099-420-010	A-II-40	A-II-40
099-420-011	A-II-40	A-II-40
099-420-012	A-II-40	A-II-40
099-610-003	A-II	A-II-100
099-630-004	A-II-100	A-II-100
099-630-005	A-II-100	A-II-100
099-630-006	A-II-100	A-II-100
099-630-007	A-II-100	A-II-100
099-630-008	A-II-100	A-II-100
099-630-009	A-II-100	A-II-100
131-010-001	A-II	A-II-100
131-010-003	A-II	A-II-100
131-010-004	A-II	A-II-100

\* Parcel removed from Urban Area boundary

\*\* Parcel removed from EDRN boundary



<b>RURAL REGIONS</b>		
<b>APN</b>	<b>Exist Land Use</b>	<b>Proposed Land Use</b>
131-010-013	A-II	A-II-100
131-010-014	A-II	A-II-100
131-010-015	A-II	A-II-100
131-010-016	A-II	A-II-100
131-010-017	A-II	A-II-100
131-010-018	A-II	A-II-100
131-010-019	A-II	A-II-100
131-010-020	A-II	A-II-100
131-010-021	A-II	A-II-100
131-010-022	A-II	A-II-100
131-010-023	A-II	A-II-100
131-010-024	A-II	A-II-100
131-010-025	A-II	A-II-100
131-010-026	A-II	A-II-100
131-010-027	A-II	A-II-100
131-010-028	A-II	A-II-100
131-010-029	A-II	A-II-100
131-010-030	A-II	A-II-100
131-010-033	A-II	A-II-100
131-010-038	A-II	A-II-100
131-010-039	A-II	A-II-100
131-010-041	A-II	A-II-100
131-010-042	A-II	A-II-100
131-010-044	A-II	A-II-100
131-010-046	A-II	A-II-100
131-010-049	A-II	A-II-100
131-010-052	A-II	A-II-100
131-010-058	A-II	A-II-100
131-010-059	A-II	A-II-100
131-010-067	A-II	A-II-100
131-010-068	A-II	A-II-100
131-010-069	A-II	A-II-100
131-010-071	A-II	A-II-100
131-010-072	A-II	A-II-100
131-010-073	A-II	A-II-100
131-020-001	A-II	A-II-100
131-020-003	A-II	A-II-100
131-020-004	A-II	A-II-100
131-020-007	A-II	A-II-100
131-020-008	A-II	A-II-100
131-020-009	A-II	A-II-100
131-020-010	A-II	A-II-100

\* Parcel removed from Urban Area boundary

\*\* Parcel removed from EDRN boundary

<b>RURAL REGIONS</b>		
<b>APN</b>	<b>Exist Land Use</b>	<b>Proposed Land Use</b>
131-020-011	A-II	A-II-100
131-020-012	A-II	A-II-100
131-020-014	A-II	A-II-100
131-020-019	A-II	A-II-100
131-020-023	A-II	A-II-100
131-020-025	A-II	A-II-100
131-030-004	A-II	A-II-100
131-030-005	A-II	A-II-100
131-030-006	A-II	A-II-100
131-030-007	A-II	A-II-100
131-030-008	A-II	A-II-100
131-030-009	A-II	A-II-100
131-030-010	A-II	A-II-100
131-030-011	A-II	A-II-100
131-030-012	A-II	A-II-100
131-030-013	A-II	A-II-100
131-030-014	A-II	A-II-100
131-030-015	A-II	A-II-100
131-030-016	A-II	A-II-100
131-030-017	A-II	A-II-100
131-030-025	A-II	A-II-100
131-030-026	A-II	A-II-100
131-030-027	A-II	A-II-100
131-040-001	A-II	A-II-100
131-040-002	A-II	A-II-100
131-040-003	A-II	A-II-100
131-040-004	A-II	A-II-100
131-040-005	A-II	A-II-100
131-040-006	A-II	A-II-100
131-040-010	A-II	A-II-100
131-040-011	A-II	A-II-100
131-040-012	A-II	A-II-100
131-040-013	A-II	A-II-100
131-040-014	A-II	A-II-100
131-040-016	A-II	A-II-100
131-040-017	A-II	A-II-100
131-040-018	A-II	MA-320
131-040-019	A-II	MA-320
131-040-020	A-II	A-II-100
131-040-021	A-II	A-II-100
131-040-022	A-II	A-II-100
131-070-010	A-II	A-II-100

\* Parcel removed from Urban Area boundary

\*\* Parcel removed from EDRN boundary

<b>RURAL REGIONS</b>		
<b>APN</b>	<b>Exist Land Use</b>	<b>Proposed Land Use</b>
131-070-011	A-II	A-II-100
131-070-012	A-II	A-II-100
131-070-013	A-II	A-II-100
131-070-014	A-II	A-II-100
131-070-015	A-II	A-II-100
131-070-016	A-II	A-II-100
131-070-017	A-II	A-II-100
131-070-018	A-II	A-II-100
131-070-019	A-II	A-II-100
131-070-020	A-II	A-II-100
131-070-021	A-II	A-II-100
131-070-022	A-II	A-II-100
131-070-023	A-II	A-II-100
131-070-024	A-II	A-II-100
131-070-025	A-II	A-II-100
131-080-001	A-II	A-II-100
131-080-002	A-II	A-II-100
131-080-003	A-II	MA-320
131-080-004	A-II	MA-320
131-080-005	A-II	MA-320
131-080-006	A-II	A-II-100
131-080-007	A-II	MA-320
131-080-008	A-II	MA-320
131-080-009	A-II	MA-320
131-080-010	A-II	MA-320
131-080-011	A-II	MA-320
131-080-012	A-II	A-II-100
131-080-013	A-II	MA-320
131-080-014	A-II	MA-320
131-080-015	A-II	MA-320
131-080-016	A-II	MA-320
131-080-017	A-II	MA-320
131-080-018	A-II	MA-320
131-100-001	A-II	A-II-100
131-100-002	A-II	A-II-100
131-100-003	A-II	A-II-100
131-100-004	A-II	A-II-100
131-100-005	A-II	A-II-100
131-100-006	A-II	A-II-100
131-100-007	A-II	A-II-100
131-100-008	A-II	A-II-100
131-100-009	A-II	A-II-100

\* Parcel removed from Urban Area boundary

\*\* Parcel removed from EDRN boundary

<b>RURAL REGIONS</b>		
<b>APN</b>	<b>Exist Land Use</b>	<b>Proposed Land Use</b>
131-100-010	A-II	A-II-100
131-100-011	A-II	A-II-100
131-100-012	A-II	MA-320
131-100-013	A-II	A-II-100
131-100-014	A-II	A-II-100
131-100-015	A-II	A-II-100
131-100-016	A-II	A-II-100
131-100-017	A-II	A-II-100
131-100-018	A-II	A-II-100
131-100-019	A-II	A-II-100
131-100-020	A-II	A-II-100
131-100-021	A-II	A-II-100
131-100-023	A-II	A-II-100
131-100-024	A-II	MA-320
131-100-025	A-II	MA-320
131-100-026	A-II	A-II-100
131-100-027	A-II	A-II-100
131-100-028	A-II	A-II-100
131-110-001	A-II	MA-320
131-110-002	A-II	MA-320
131-110-003	A-II	MA-320
131-110-004	A-II	MA-320
131-110-005	A-II	MA-320
131-110-006	A-II	MA-320
131-110-007	A-II	MA-320
131-110-008	A-II	MA-320
131-110-009	A-II	MA-320
131-110-010	A-II	MA-320
131-110-011	A-II	MA-320
131-110-012	A-II	MA-320
131-110-013	A-II	MA-320
131-110-014	A-II	MA-320
131-110-015	A-II	MA-320
131-110-016	A-II	MA-320
131-110-017	A-II	MA-320
131-110-018	A-II	MA-320
131-110-019	A-II	MA-320
131-160-001	A-II	A-II-100
131-160-002	A-II	A-II-100
131-160-004	A-II	A-II-100
131-160-005	A-II	A-II-100
131-160-006	A-II	MA-320

\* Parcel removed from Urban Area boundary

\*\* Parcel removed from EDRN boundary

<b>RURAL REGIONS</b>		
<b>APN</b>	<b>Exist Land Use</b>	<b>Proposed Land Use</b>
131-160-007	A-II	MA-320
131-160-008	A-II	MA-320
131-160-009	A-II	A-II-100
131-160-010	A-II	MA-320
131-160-011	A-II	A-II-100
131-160-012	A-II	A-II-100
131-160-013	A-II	A-II-100
131-160-014	A-II	A-II-100
131-160-015	A-II	A-II-100
131-160-016	A-II	A-II-100
131-160-017	A-II	A-II-100
131-160-018	A-II	A-II-100
131-160-019	A-II	A-II-100
131-160-020	A-II	A-II-100
131-160-022	A-II	MA-320
131-160-024	A-II	A-II-100
131-160-025	A-II	MA-320
131-160-026	A-II	A-II-100
131-160-027	A-II	A-II-100
131-170-001	A-II	MA-320
131-170-002	A-II	MA-320
131-170-003	A-II	MA-320
131-170-004	A-II	MA-320
131-170-005	A-II	MA-320
131-170-006	A-II	MA-320
131-170-007	A-II	MA-320
131-170-008	A-II	MA-320
131-170-009	A-II	MA-320
131-170-010	A-II	MA-320
131-170-011	A-II	MA-320
131-170-012	A-II	MA-320
131-170-013	A-II	MA-320
131-170-014	A-II	MA-320
131-170-015	A-II	MA-320
131-170-016	A-II	MA-320
131-170-017	A-II	MA-320
131-170-018	A-II	MA-320
133-010-003	A-II	A-II-100
133-020-001	A-II	A-II-100
133-020-003	A-II	A-II-100
133-020-004	A-II	A-II-100
133-020-007	A-II	A-II-100

\* Parcel removed from Urban Area boundary

\*\* Parcel removed from EDRN boundary

<b>RURAL REGIONS</b>		
<b>APN</b>	<b>Exist Land Use</b>	<b>Proposed Land Use</b>
133-020-008	A-II	A-II-100
133-020-010	A-II	A-II-100
133-020-011	A-II	A-II-100
133-020-012	A-II	A-II-100
133-020-014	A-II	A-II-100
133-020-020	A-II	A-II-100
133-020-027	A-II	A-II-100
133-020-030	A-II	A-II-100
133-020-031	A-II	A-II-100
133-030-004	A-II	A-II-100
133-030-005	A-II	MA-320
133-030-006	A-II	MA-320
133-030-007	A-II	MA-320
133-030-008	A-II	MA-320
133-030-009	A-II	MA-320
133-030-010	A-II	MA-320
133-030-011	A-II	MA-320
133-030-027	A-II	MA-320
133-030-028	A-II	MA-320
133-030-036	A-II	MA-320
133-030-037	A-II	A-II-100
133-030-038	A-II	A-II-100
133-030-039	A-II	A-II-100
133-060-004	A-II	A-II-100
133-060-010	A-II	MA-320
133-060-011	A-II	MA-320
133-060-012	A-II	MA-320
133-060-013	A-II	MA-320
133-060-014	A-II	MA-320
133-060-015	A-II	A-II-100
133-060-016	A-II	MA-320
133-060-017	A-II	A-II-100
133-060-018	A-II	MA-320
133-060-019	A-II	MA-320
133-060-021	A-II	MA-320
133-060-022	A-II	MA-320
133-060-031	A-II	A-II-100
133-060-032	A-II	A-II-100
133-060-033	A-II	MA-320
133-060-034	A-II	A-II-100
133-060-036	A-II	MA-320
133-060-037	A-II	MA-320

\* Parcel removed from Urban Area boundary

\*\* Parcel removed from EDRN boundary

<b>RURAL REGIONS</b>		
<b>APN</b>	<b>Exist Land Use</b>	<b>Proposed Land Use</b>
133-060-041	A-II	A-II-100
133-090-001	A-II	A-II-100
133-090-002	A-II	A-II-100
133-090-003	A-II	MA-320
133-090-004	A-II	A-II-100
133-090-005	A-II	MA-320
133-090-006	A-II	MA-320
133-090-007	A-II	A-II-100
133-090-008	A-II	A-II-100
133-090-009	A-II	A-II-100
133-090-010	RECREATION/OPEN SPACE	RECREATION/OPEN SPACE
133-090-011	A-II	A-II-100
133-090-012	A-II	A-II-100
133-090-013	A-II	A-II-100
133-090-015	A-II	A-II-100
133-090-016	A-II	A-II-100
133-090-017	A-II	A-II-100
133-110-028	A-II	A-II-40
133-110-031	A-II	A-II-40
133-120-006	A-II	A-II-100
133-120-008	A-II	A-II-100
133-120-009	A-II	A-II-100
133-120-010	A-II	A-II-100
133-120-011	A-II	A-II-100
133-120-012	A-II	A-II-100
133-120-015	A-II	A-II-100
133-120-031	A-II	A-II-100
133-120-032	A-II	A-II-100
133-120-033	RECREATION/OPEN SPACE	RECREATION/OPEN SPACE
133-120-034	A-II	A-II-100
133-120-046	A-II	A-II-100
133-120-048	A-II	A-II-100
133-120-051	A-II	A-II-100
133-120-052	A-II	A-II-100
133-151-006	A-II	A-II-40
133-151-014	A-II	A-II-40
133-151-015	A-II	A-II-40
133-151-016	A-II	A-II-40
133-151-017	A-II	A-II-40
133-160-056	A-II-100	A-II-100
133-160-056	A-II	A-II-100
133-160-057	A-II	A-II-100

\* Parcel removed from Urban Area boundary

\*\* Parcel removed from EDRN boundary

<b>RURAL REGIONS</b>		
<b>APN</b>	<b>Exist Land Use</b>	<b>Proposed Land Use</b>
133-190-001	A-II	A-II-40
133-190-002	A-II	A-II-40
133-190-003	A-II	A-II-40
133-190-004	A-II	A-II-40
133-190-011	A-II	A-II-40
137-280-013	A-II	A-II-40
137-280-014	A-II	A-II-40
137-280-015	A-II	A-II-40
137-280-016	A-II	A-II-40
137-310-004	A-I	A-I-40
137-310-004	A-II	A-II-100
137-310-005	A-II	A-II-100
137-310-011	A-I	A-I-40
137-310-012	A-II	A-II-100
137-310-013	A-I	A-I-40
137-310-013	A-II	A-II-100
137-310-014	A-I	A-I-40
137-310-014	A-II	A-II-100
137-310-015	A-II	A-II-100
137-310-016	A-I	A-I-40
137-310-016	A-II	A-II-100
137-310-017	A-I	A-I-40
137-310-017	A-II	A-II-100
137-320-003	A-II	A-II-100
141-020-012	A-II	A-II-100
141-020-024	A-II	A-II-100
141-070-005	A-II-100	A-II-100
141-070-006	A-II-100	A-II-40
141-070-027	A-II-100	A-II-40
141-090-017	A-II	A-II-100
141-090-022	A-II	A-II-100
141-090-025	A-II	A-II-100
141-090-026	A-II	A-II-100
141-260-005	OTHER OPEN LANDS	OTHER OPEN LANDS
141-260-006	OTHER OPEN LANDS	OTHER OPEN LANDS
141-260-007	OTHER OPEN LANDS	OTHER OPEN LANDS
141-270-005	A-II	A-II-100
141-280-029	A-II-100	A-II-100
141-290-024	A-II	A-II-100
141-290-025	A-II	A-II-100
141-290-053	RECREATION/OPEN SPACE	RECREATION/OPEN SPACE
141-290-054	OTHER OPEN LANDS	OTHER OPEN LANDS

\* Parcel removed from Urban Area boundary

\*\* Parcel removed from EDRN boundary



<b>RURAL REGIONS</b>		
<b>APN</b>	<b>Exist Land Use</b>	<b>Proposed Land Use</b>
141-290-054	RECREATION/OPEN SPACE	RECREATION/OPEN SPACE
145-010-001	A-II	MA-320
145-010-002	A-II	MA-320
145-010-003	A-II	MA-320
145-010-004	A-II	MA-320
145-010-005	A-II	MA-320
145-010-006	A-II	MA-320
145-010-007	A-II	MA-320
145-010-008	A-II	MA-320
145-010-009	A-II	MA-320
145-010-010	A-II	MA-320
145-010-011	A-II	MA-320
145-010-012	A-II	MA-320
145-010-013	A-II	A-II-100
145-010-014	A-II	MA-320
145-010-015	A-II	MA-320
145-010-016	A-II	MA-320
145-010-017	A-II	MA-320
145-010-018	A-II	MA-320
145-020-001	A-II	MA-320
145-020-002	A-II	MA-320
145-020-003	A-II	MA-320
145-020-004	A-II	MA-320
145-020-005	A-II	MA-320
145-020-006	A-II	MA-320
145-020-007	A-II	MA-320
145-020-008	A-II	MA-320
145-020-010	A-II	MA-320
145-020-011	A-II	MA-320
145-020-012	A-II	MA-320
145-020-013	A-II	MA-320
145-020-014	A-II	MA-320
145-020-015	A-II	MA-320
145-030-001	A-II	MA-320
145-030-002	A-II	MA-320
145-030-003	A-II	MA-320
145-030-004	A-II	MA-320
145-030-005	A-II	MA-320
145-030-006	A-II	MA-320
145-030-007	A-II	MA-320
145-030-008	A-II	MA-320
145-030-009	A-II	MA-320

\* Parcel removed from Urban Area boundary  
 \*\* Parcel removed from EDRN boundary

<b>RURAL REGIONS</b>		
<b>APN</b>	<b>Exist Land Use</b>	<b>Proposed Land Use</b>
145-030-010	A-II	MA-320
145-030-011	A-II	MA-320
145-030-012	A-II	MA-320
145-030-013	A-II	MA-320
145-030-014	A-II	MA-320
145-030-015	A-II	MA-320
145-030-016	A-II	MA-320
145-030-017	A-II	MA-320
145-030-018	A-II	MA-320
145-030-019	A-II	MA-320
145-030-020	A-II	MA-320
145-040-001	A-II	A-II-100
145-040-002	A-II	A-II-100
145-040-003	A-II	A-II-100
145-040-004	A-II	MA-320
145-040-005	A-II	MA-320
145-040-006	A-II	MA-320
145-040-007	A-II	A-II-100
145-040-008	A-II	A-II-100
145-040-009	A-II	A-II-100
145-040-010	A-II	A-II-100
145-040-011	A-II	MA-320
145-040-012	A-II	MA-320
145-040-013	A-II	A-II-100
145-040-014	A-II	A-II-100
145-040-015	A-II	A-II-100
145-040-016	A-II	A-II-100
145-040-019	A-II	MA-320
145-040-020	A-II	MA-320
145-040-021	A-II	A-II-100
145-040-022	A-II	A-II-100
145-040-023	A-II	A-II-100
145-040-024	A-II	A-II-100
145-040-025	A-II	A-II-100
145-040-026	A-II	MA-320
145-050-001	A-II	MA-320
145-050-002	A-II	MA-320
145-050-003	A-II	MA-320
145-050-004	A-II	MA-320
145-050-005	A-II	MA-320
145-050-006	A-II	MA-320
145-050-007	A-II	MA-320

\* Parcel removed from Urban Area boundary

\*\* Parcel removed from EDRN boundary

<b>RURAL REGIONS</b>		
<b>APN</b>	<b>Exist Land Use</b>	<b>Proposed Land Use</b>
145-050-008	A-II	MA-320
145-050-009	A-II	MA-320
145-050-010	A-II	MA-320
145-050-011	A-II	MA-320
145-050-012	A-II	MA-320
145-060-001	A-II	MA-320
145-060-002	A-II	MA-320
145-060-003	A-II	MA-320
145-060-004	A-II	MA-320
145-060-005	A-II	MA-320
145-060-006	A-II	MA-320
145-060-007	A-II	MA-320
145-060-008	A-II	MA-320
145-060-009	A-II	MA-320
145-060-010	A-II	MA-320
145-060-011	A-II	MA-320
145-060-012	A-II	MA-320
145-060-013	A-II	MA-320
145-060-014	A-II	MA-320
145-060-015	A-II	MA-320
145-060-016	A-II	MA-320
145-060-017	A-II	MA-320
145-060-018	A-II	MA-320
145-070-001	A-II	A-II-100
145-070-003	A-II	A-II-100
145-070-004	A-II	A-II-100
145-070-005	A-II	A-II-100
145-070-006	A-II	A-II-100
145-070-008	A-II	MA-320
145-070-009	A-II	A-II-100
145-070-011	A-II	A-II-100
145-070-012	A-II	A-II-100
145-070-013	A-II	A-II-100
145-070-014	A-II	A-II-100
145-070-015	A-II	A-II-100
145-070-016	A-II	A-II-100
145-070-017	A-II	A-II-100
145-070-018	A-II	A-II-100
145-070-019	A-II	A-II-100
145-070-021	A-II	A-II-100
145-070-024	A-II	A-II-100
145-070-027	A-II	A-II-100

\* Parcel removed from Urban Area boundary

\*\* Parcel removed from EDRN boundary

<b>RURAL REGIONS</b>		
<b>APN</b>	<b>Exist Land Use</b>	<b>Proposed Land Use</b>
145-070-028	A-II	A-II-100
145-070-031	A-II	A-II-100
145-070-032	A-II	A-II-100
145-070-037	A-II	A-II-100
145-070-038	A-II	A-II-100
145-070-041	A-II	A-II-100
145-070-042	A-II	A-II-100
145-070-044	A-II	A-II-100
145-070-046	A-II	A-II-100
145-080-001	A-II	MA-320
145-080-002	A-II	MA-320
145-080-003	A-II	MA-320
145-080-004	A-II	MA-320
145-080-005	A-II	MA-320
145-080-006	A-II	MA-320
145-080-007	A-II	A-II-100
145-080-008	A-II	A-II-100
145-080-009	A-II	MA-320
145-080-010	A-II	MA-320
145-080-011	A-II	MA-320
145-080-012	A-II	MA-320
145-080-013	A-II	A-II-100
145-080-014	A-II	A-II-100
145-080-015	A-II	A-II-100
145-080-016	A-II	MA-320
145-080-017	A-II	MA-320
145-080-018	A-II	MA-320
145-090-001	A-II	MA-320
145-090-002	A-II	MA-320
145-090-003	A-II	MA-320
145-090-004	A-II	MA-320
145-090-005	A-II	MA-320
145-090-006	A-II	MA-320
145-090-007	A-II	MA-320
145-090-008	A-II	MA-320
145-090-009	A-II	MA-320
145-090-010	A-II	MA-320
145-090-011	A-II	MA-320
145-090-012	A-II	MA-320
145-090-013	A-II	MA-320
145-090-014	A-II	MA-320
145-090-015	A-II	MA-320

\* Parcel removed from Urban Area boundary  
 \*\* Parcel removed from EDRN boundary

<b>RURAL REGIONS</b>		
<b>APN</b>	<b>Exist Land Use</b>	<b>Proposed Land Use</b>
145-090-016	A-II	MA-320
145-090-017	A-II	MA-320
145-090-018	A-II	MA-320
145-090-019	A-II	MA-320
145-110-003	A-II	A-II-100
145-110-004	A-II	A-II-100
145-110-006	A-II	A-II-100
145-110-007	A-II	A-II-100
145-110-008	A-II	A-II-100
145-110-009	A-II	A-II-100
145-110-010	A-II	MA-320
145-110-011	A-II	MA-320
145-110-014	A-II	A-II-100
145-110-017	A-II	A-II-100
145-110-018	A-II	A-II-100
145-110-019	A-II	A-II-100
145-110-020	A-II	MA-320
145-110-026	A-II	A-II-100
145-110-027	A-II	A-II-100
145-110-028	A-II	A-II-100
145-110-029	A-II	A-II-100
145-110-030	A-II	A-II-100
145-120-001	A-II	MA-320
145-120-002	A-II	MA-320
145-120-003	A-II	MA-320
145-120-004	A-II	MA-320
145-120-005	A-II	MA-320
145-120-006	A-II	MA-320
145-120-007	A-II	MA-320
145-120-008	A-II	MA-320
145-120-009	A-II	MA-320
145-120-010	A-II	MA-320
145-120-011	A-II	MA-320
145-120-012	A-II	MA-320
145-120-013	A-II	MA-320
145-120-014	A-II	MA-320
145-120-015	A-II	MA-320
145-120-016	A-II	MA-320
145-120-017	A-II	MA-320
145-120-019	A-II	MA-320
145-120-020	A-II	MA-320
145-120-021	A-II	MA-320

\* Parcel removed from Urban Area boundary

\*\* Parcel removed from EDRN boundary

<b>RURAL REGIONS</b>		
<b>APN</b>	<b>Exist Land Use</b>	<b>Proposed Land Use</b>
145-130-017	OTHER OPEN LANDS	OTHER OPEN LANDS
145-130-023	A-II	A-II-100
145-130-030	A-II	A-II-100
145-140-006	A-II	A-II-100
145-140-007	A-II	A-II-100
145-140-014	A-II	A-II-100
145-150-001	A-II	MA-320
145-150-002	A-II	MA-320
145-150-003	A-II	MA-320
145-150-004	A-II	MA-320
145-150-005	A-II	MA-320
145-150-006	A-II	MA-320
145-150-007	A-II	A-II-100
145-150-008	A-II	MA-320
145-150-009	A-II	MA-320
145-150-010	A-II	MA-320
145-150-011	A-II	MA-320
145-150-012	A-II	MA-320
145-150-021	A-II	A-II-100
145-150-023	A-II	A-II-100
145-150-025	A-II	MA-320
145-150-027	A-II	MA-320
145-150-029	A-II	MA-320
145-150-031	A-II	MA-320
145-150-032	A-II	MA-320
145-160-039	OTHER OPEN LANDS	OTHER OPEN LANDS
145-160-043	OTHER OPEN LANDS	OTHER OPEN LANDS
145-160-065	A-II-100	A-II-100
145-160-067	A-II-100	A-II-100
145-160-070	A-II-100	A-II-100
145-160-071	A-II-100	A-II-100
145-160-072	RECREATION/OPEN SPACE	RECREATION/OPEN SPACE
145-160-073	OTHER OPEN LANDS	OTHER OPEN LANDS
145-160-073	RECREATION/OPEN SPACE	RECREATION/OPEN SPACE
145-160-074	RECREATION/OPEN SPACE	RECREATION/OPEN SPACE
145-160-075	OTHER OPEN LANDS	OTHER OPEN LANDS
145-160-075	RECREATION/OPEN SPACE	RECREATION/OPEN SPACE
145-160-079	A-II-100	A-II-100
145-160-088	OTHER OPEN LANDS	OTHER OPEN LANDS
145-170-033	OTHER OPEN LANDS	OTHER OPEN LANDS
145-170-035	A-II	A-II-100
145-180-020	A-II	A-II-100

\* Parcel removed from Urban Area boundary

\*\* Parcel removed from EDRN boundary

<b>RURAL REGIONS</b>		
<b>APN</b>	<b>Exist Land Use</b>	<b>Proposed Land Use</b>
145-180-021	A-II	A-II-100
145-190-003	A-II	A-II-100
145-200-001	A-II-100	A-II-100
145-200-002	A-II-100	A-II-100
145-200-003	A-II-100	A-II-100
145-200-004	A-II-100	A-II-100
145-200-005	A-II-100	A-II-100
145-200-006	A-II-100	A-II-100
145-200-007	A-II-100	A-II-100
145-200-009	A-II-100	A-II-100
147-010-023	A-II	A-II-100
147-010-024	A-II	A-II-100
147-020-036	A-II	A-II-100
147-020-042	A-II	A-II-100
147-030-013	A-II	A-II-100
147-030-015	A-II	A-II-100
147-030-016	A-II	A-II-100
147-030-024	A-II	A-II-100
147-030-057	A-II	A-II-100
147-030-058	A-II	A-II-100
147-030-059	A-II	A-II-100
147-030-062	A-II	A-II-100
147-044-037	A-II	A-II-100
147-044-038	A-II	A-II-100
147-044-039	A-II	A-II-100
147-044-040	A-II	A-II-100
147-045-001	A-II	A-II-100
147-050-001	A-II	A-II-100
147-050-002	A-II	A-II-100
147-050-003	A-II	A-II-100
147-050-004	A-II	A-II-100
147-050-005	A-II	A-II-100
147-050-006	A-II	A-II-100
147-050-008	A-II	A-II-100
147-050-009	A-II	A-II-100
147-050-011	A-II	A-II-100
147-050-012	A-II	A-II-100
147-050-015	A-II	A-II-100
147-050-016	A-II	A-II-100
147-050-017	A-II	A-II-100
147-050-021	A-II	A-II-100
147-050-022	A-II	A-II-100

\* Parcel removed from Urban Area boundary

\*\* Parcel removed from EDRN boundary

<b>RURAL REGIONS</b>		
<b>APN</b>	<b>Exist Land Use</b>	<b>Proposed Land Use</b>
147-050-023	A-II	A-II-100
147-050-024	A-II	A-II-100
147-050-026	A-II	A-II-100
147-050-027	A-II	A-II-100
147-050-028	A-II	A-II-100
147-050-029	A-II	A-II-100
147-050-031	A-II	A-II-100
147-050-032	A-II	A-II-100
147-050-033	A-II	A-II-100
147-050-034	A-II	A-II-100
147-050-035	A-II	A-II-100
147-050-036	A-II	A-II-100
147-050-037	A-II	A-II-100
147-050-038	A-II	A-II-100
147-060-001	A-II	A-II-100
147-060-002	A-II	A-II-100
147-060-003	A-II	A-II-100
147-060-008	A-II	A-II-100
147-060-009	A-II	MA-320
147-060-010	A-II	MA-320
147-060-011	A-II	A-II-100
147-060-012	A-II	A-II-100
147-060-013	A-II	MA-320
147-060-014	A-II	MA-320
147-060-015	A-II	MA-320
147-060-016	A-II	A-II-100
147-070-001	A-II	A-II-100
147-070-004	A-II	A-II-100
147-070-006	A-II	A-II-100
147-070-007	A-II	A-II-100
147-070-008	A-II	A-II-100
147-070-009	A-II	A-II-100
147-070-011	A-II	A-II-100
147-070-012	A-II	A-II-100
147-070-013	A-II	A-II-100
147-070-014	A-II	A-II-100
147-070-015	A-II	A-II-100
147-070-016	A-II	A-II-100
147-070-017	A-II	A-II-100
147-070-018	A-II	A-II-100
147-070-020	A-II	A-II-100
147-070-021	A-II	A-II-100

\* Parcel removed from Urban Area boundary

\*\* Parcel removed from EDRN boundary



<b>RURAL REGIONS</b>		
<b>APN</b>	<b>Exist Land Use</b>	<b>Proposed Land Use</b>
147-070-022	A-II	A-II-100
147-070-024	A-II	A-II-100
147-070-025	A-II	A-II-100
147-070-026	A-II	A-II-100
147-070-027	A-II	A-II-100
147-070-028	A-II	A-II-100
147-070-029	A-II	A-II-100
147-070-030	A-II	A-II-100
147-070-031	A-II	A-II-100
147-070-032	A-II	A-II-100
147-070-035	A-II	A-II-100
147-070-036	A-II	A-II-100
147-080-002	A-II	A-II-100
147-080-005	A-II	A-II-100
147-080-006	A-II	A-II-100
147-080-008	A-II	A-II-100
147-080-009	A-II	A-II-100
147-080-010	A-II	A-II-100
147-080-011	A-II	A-II-100
147-080-012	A-II	A-II-100
147-080-013	A-II	A-II-100
147-090-001	A-II	A-II-100
147-090-002	A-II	A-II-100
147-090-003	A-II	A-II-100
147-090-004	A-II	A-II-100
147-090-005	A-II	A-II-100
147-090-006	A-II	A-II-100
147-090-007	A-II	A-II-100
147-090-008	A-II	A-II-100
147-090-009	A-II	A-II-100
147-090-010	A-II	A-II-100
147-090-011	A-II	A-II-100
147-090-012	A-II	A-II-100
147-090-013	A-II	A-II-100
147-090-014	A-II	A-II-100
147-090-015	A-II	A-II-100
147-090-017	A-II	A-II-100
147-090-022	A-II	A-II-100
147-090-024	A-II	A-II-100
147-090-025	A-II	A-II-100
147-090-027	A-II	A-II-100
147-090-028	A-II	A-II-100

\* Parcel removed from Urban Area boundary

\*\* Parcel removed from EDRN boundary

<b>RURAL REGIONS</b>		
<b>APN</b>	<b>Exist Land Use</b>	<b>Proposed Land Use</b>
147-090-030	A-II	A-II-100
147-090-032	A-II	A-II-100
147-090-033	A-II	A-II-100
147-090-034	A-II	A-II-100
147-090-037	A-II	A-II-100
147-090-039	A-II	A-II-100
147-090-040	A-II	A-II-100
147-090-042	A-II	A-II-100
147-090-044	A-II	A-II-100
147-090-045	A-II	A-II-100
147-090-046	A-II	A-II-100
147-090-047	A-II	A-II-100
147-090-048	A-II	A-II-100
147-090-049	A-II	A-II-100
147-090-050	A-II	A-II-100
147-090-051	A-II	A-II-100
147-090-052	A-II	A-II-100
147-090-054	A-II	A-II-100
147-090-055	A-II	A-II-100
147-090-056	A-II	A-II-100
147-090-057	A-II	A-II-100
147-100-001	A-II	A-II-100
147-100-002	A-II	A-II-100
147-100-004	A-II	A-II-100
147-100-005	A-II	A-II-100
147-100-007	A-II	A-II-100
147-100-009	A-II	A-II-100
147-100-010	A-II	A-II-100
147-100-011	A-II	A-II-100
147-100-012	A-II	A-II-100
147-100-013	A-II	A-II-100
147-100-014	A-II	A-II-100
147-100-015	A-II	A-II-100
147-100-016	A-II	A-II-100
147-100-017	A-II	A-II-100
147-100-018	A-II	A-II-100
147-100-019	A-II	A-II-100
147-100-027	A-II	A-II-100
147-100-028	A-II	A-II-100
147-100-032	A-II	A-II-100
147-100-033	A-II	A-II-100
147-100-034	A-II	A-II-100

\* Parcel removed from Urban Area boundary

\*\* Parcel removed from EDRN boundary

<b>RURAL REGIONS</b>		
<b>APN</b>	<b>Exist Land Use</b>	<b>Proposed Land Use</b>
147-100-035	A-II	A-II-100
147-100-036	A-II	A-II-100
147-100-037	A-II	A-II-100
147-100-038	A-II	A-II-100
147-100-039	A-II	A-II-100
147-100-040	A-II	A-II-100
147-100-041	A-II	A-II-100
147-100-042	A-II	A-II-100
147-100-043	A-II	A-II-100
147-100-044	A-II	A-II-100
147-100-046	A-II	A-II-100
147-100-047	A-II	A-II-100
147-100-050	A-II	A-II-100
147-100-053	A-II	A-II-100
147-100-054	A-II	A-II-100
147-100-056	A-II	A-II-100
147-100-057	A-II	A-II-100
147-100-058	A-II	A-II-100
147-100-059	A-II	A-II-100
147-100-060	A-II	A-II-100
147-100-061	A-II	A-II-100
147-100-062	A-II	A-II-100
147-100-063	A-II	A-II-100
147-100-065	A-II	A-II-100
147-120-001	A-II	MA-320
147-120-002	A-II	MA-320
147-120-003	A-II	MA-320
147-120-004	A-II	MA-320
147-120-005	A-II	MA-320
147-120-006	A-II	MA-320
147-120-007	A-II	MA-320
147-120-008	A-II	MA-320
147-120-009	A-II	MA-320
147-120-010	A-II	MA-320
147-120-011	A-II	MA-320
147-120-012	A-II	MA-320
147-130-001	A-II	A-II-100
147-130-002	A-II	A-II-100
147-130-003	A-II	A-II-100
147-130-004	A-II	A-II-100
147-130-005	A-II	A-II-100
147-130-007	A-II	A-II-100

\* Parcel removed from Urban Area boundary

\*\* Parcel removed from EDRN boundary

<b>RURAL REGIONS</b>		
<b>APN</b>	<b>Exist Land Use</b>	<b>Proposed Land Use</b>
147-130-008	A-II	A-II-100
147-130-009	A-II	A-II-100
147-130-010	A-II	MA-320
147-130-011	A-II	A-II-100
147-130-012	A-II	A-II-100
147-130-013	A-II	A-II-100
147-130-014	A-II	A-II-100
147-130-015	A-II	A-II-100
147-130-016	A-II	A-II-100
147-130-017	A-II	MA-320
147-130-018	A-II	MA-320
147-130-019	A-II	MA-320
147-130-020	A-II	MA-320
147-130-021	A-II	MA-320
147-130-022	A-II	A-II-100
147-130-023	A-II	A-II-100
147-130-024	A-II	A-II-100
147-130-025	A-II	A-II-100
147-140-001	A-II	A-II-100
147-140-002	A-II	A-II-100
147-140-005	A-II	A-II-100
147-140-006	A-II	A-II-100
147-140-009	A-II	A-II-100
147-140-010	A-II	A-II-100
147-140-011	A-II	A-II-100
147-140-011	RECREATION/OPEN SPACE	RECREATION/OPEN SPACE
147-140-012	A-II	A-II-100
147-140-013	A-II	A-II-100
147-140-014	A-II	A-II-100
147-140-015	A-II	A-II-100
147-140-016	A-II	A-II-100
147-140-017	A-II	A-II-100
147-150-004	A-II	A-II-100
147-150-006	A-II	A-II-100
147-150-007	A-II	A-II-100
147-150-010	A-II	A-II-100
147-150-011	A-II	A-II-100
147-150-013	A-II	A-II-100
147-160-001	A-II	MA-320
147-160-002	A-II	MA-320
147-160-003	A-II	MA-320
147-160-004	A-II	MA-320

\* Parcel removed from Urban Area boundary

\*\* Parcel removed from EDRN boundary

<b>RURAL REGIONS</b>		
<b>APN</b>	<b>Exist Land Use</b>	<b>Proposed Land Use</b>
147-160-005	A-II	MA-320
147-160-006	A-II	MA-320
147-160-007	A-II	MA-320
147-160-008	A-II	MA-320
147-160-009	A-II	MA-320
147-160-010	A-II	MA-320
147-160-011	A-II	MA-320
147-160-012	A-II	MA-320
147-170-001	A-II	MA-320
147-170-002	A-II	MA-320
147-170-003	A-II	MA-320
147-170-004	A-II	MA-320
147-170-005	A-II	MA-320
147-170-006	A-II	MA-320
147-170-007	A-II	MA-320
147-170-008	A-II	MA-320
147-170-009	A-II	MA-320
147-170-010	A-II	MA-320
147-170-011	A-II	MA-320
147-170-012	A-II	MA-320
147-170-013	A-II	MA-320
147-170-014	A-II	MA-320
147-170-015	A-II	MA-320
147-170-016	A-II	MA-320
147-170-017	A-II	MA-320
147-170-018	A-II	MA-320
147-180-001	A-II	A-II-100
147-180-002	A-II	A-II-100
147-180-003	A-II	A-II-100
147-180-004	A-II	A-II-100
147-180-009	A-II	A-II-100
147-180-010	A-II	A-II-100
147-180-011	A-II	A-II-100
147-180-012	A-II	A-II-100
147-180-013	A-II	A-II-100
147-180-014	A-II	MA-320
147-180-015	A-II	MA-320
147-180-016	A-II	MA-320
147-180-017	A-II	MA-320
147-180-018	A-II	A-II-100
147-180-019	A-II	A-II-100
147-180-020	A-II	A-II-100

\* Parcel removed from Urban Area boundary

\*\* Parcel removed from EDRN boundary

<b>RURAL REGIONS</b>		
<b>APN</b>	<b>Exist Land Use</b>	<b>Proposed Land Use</b>
147-180-021	A-II	A-II-100
147-180-022	A-II	A-II-100
147-180-023	A-II	A-II-100
147-180-024	A-II	A-II-100
147-180-025	A-II	A-II-100
147-190-001	A-II	MA-320
147-190-002	A-II	MA-320
147-190-003	A-II	MA-320
147-190-004	A-II	MA-320
147-190-005	A-II	MA-320
147-190-006	A-II	MA-320
147-190-007	A-II	MA-320
147-190-008	A-II	MA-320
147-190-009	A-II	MA-320
147-190-010	A-II	MA-320
147-190-011	A-II	MA-320
147-190-012	A-II	MA-320
147-190-013	A-II	MA-320
147-190-014	A-II	MA-320
147-190-015	A-II	MA-320
147-190-016	A-II	MA-320
147-200-001	A-II	MA-320
147-200-002	A-II	MA-320
147-200-003	A-II	MA-320
147-200-004	A-II	MA-320
147-200-005	A-II	MA-320
147-200-006	A-II	MA-320
147-200-007	A-II	MA-320
147-200-008	A-II	MA-320
147-200-009	A-II	MA-320
147-200-010	A-II	MA-320
147-200-011	A-II	MA-320
147-200-012	A-II	MA-320
147-200-013	A-II	MA-320
147-200-014	A-II	MA-320
147-200-015	A-II	MA-320
147-200-016	A-II	MA-320
147-200-017	A-II	MA-320
147-200-018	A-II	MA-320
147-200-019	A-II	MA-320
147-210-001	A-II	MA-320
147-210-002	A-II	MA-320

\* Parcel removed from Urban Area boundary

\*\* Parcel removed from EDRN boundary

Ordinance 661 Consistency Rezone Phase II Project

Exhibit A - Amendments to the Santa Barbara County Comprehensive Plan Land Use Map by Parcel

Page 41

<b>RURAL REGIONS</b>		
<b>APN</b>	<b>Exist Land Use</b>	<b>Proposed Land Use</b>
147-210-003	A-II	MA-320
147-210-004	A-II	MA-320
147-210-005	A-II	MA-320
147-210-006	A-II	A-II-100
147-210-007	A-II	A-II-100
147-210-008	A-II	A-II-100
147-210-009	A-II	A-II-100
147-210-010	A-II	MA-320
147-210-011	A-II	MA-320
147-210-012	A-II	MA-320
147-210-013	A-II	MA-320
147-210-014	A-II	MA-320
147-210-015	A-II	MA-320
147-210-016	A-II	MA-320
147-210-017	A-II	MA-320
147-210-018	A-II	MA-320
147-210-019	A-II	MA-320
149-010-024	A-II	A-II-100
149-010-030	A-II	A-II-100
149-010-031	A-II	A-II-100
149-010-036	A-II	A-II-100
149-100-009	A-II	A-II-100
149-100-014	A-II	A-II-100
149-140-001	A-II	A-II-100
149-140-003	A-II	A-II-100
149-140-005	A-II	A-II-100
149-140-007	A-II	A-II-100
149-140-009	A-II	A-II-100
149-140-011	A-II	A-II-100
149-140-012	A-II	A-II-100
149-140-013	A-II	A-II-100
149-140-014	A-II	A-II-100
149-140-015	A-II	A-II-100
149-140-017	A-II	A-II-100
149-140-018	A-II	A-II-100
149-140-019	A-II	A-II-100
149-140-020	A-II	A-II-100
149-140-021	A-II	A-II-100
149-140-028	A-II	A-II-100
149-140-029	A-II	A-II-100
149-140-030	A-II	A-II-100
149-140-031	A-II	A-II-100

\* Parcel removed from Urban Area boundary

\*\* Parcel removed from EDRN boundary

<b>RURAL REGIONS</b>		
<b>APN</b>	<b>Exist Land Use</b>	<b>Proposed Land Use</b>
149-140-035	A-II	A-II-100
149-140-038	A-II	A-II-100
149-140-039	A-II	A-II-100
149-140-040	A-II	A-II-100
149-140-045	A-II	A-II-100
149-140-048	A-II	A-II-100
149-140-050	A-II	A-II-100
149-140-051	A-II	A-II-100
149-140-052	A-II	A-II-100
149-140-053	A-II	A-II-100
149-140-054	A-II	A-II-100
149-140-055	A-II	A-II-100
149-140-056	A-II	A-II-100
149-140-057	A-II	A-II-100
149-140-058	A-II	A-II-100
149-140-060	A-II	A-II-100
149-140-061	A-II	A-II-100
149-140-062	A-II	A-II-100
149-140-063	A-II	A-II-100
149-140-064	A-II	A-II-100
149-140-065	A-II	A-II-100
149-140-066	A-II	A-II-100
149-140-067	A-II	A-II-100
149-140-068	A-II	A-II-100
149-140-069	A-II	A-II-100
149-140-070	A-II	A-II-100
149-140-071	A-II	A-II-100
149-140-072	A-II	A-II-100
149-140-073	A-II	A-II-100
149-140-074	A-II	A-II-100
149-140-075	A-II	A-II-100
149-150-002	A-II	A-II-100
149-150-003	A-II	A-II-100
149-150-006	A-II	A-II-100
149-150-008	A-II	A-II-100
149-150-009	A-II	A-II-100
149-150-013	A-II	A-II-100
149-150-015	A-II	A-II-100
149-150-018	A-II	A-II-100
149-150-019	A-II	A-II-100
149-150-023	A-II	A-II-100
149-150-025	A-II	A-II-100

\* Parcel removed from Urban Area boundary

\*\* Parcel removed from EDRN boundary



<b>RURAL REGIONS</b>		
<b>APN</b>	<b>Exist Land Use</b>	<b>Proposed Land Use</b>
149-150-028	A-II	A-II-40
149-150-033	A-II	A-II-40
149-150-034	A-II	A-II-40
149-150-035	A-II	A-II-40
149-150-036	A-II	A-II-40
149-150-037	A-II	A-II-100
149-150-038	A-II	A-II-100
149-160-001	A-II	A-II-100
149-160-003	A-II	A-II-100
149-160-005	A-II	A-II-100
149-160-007	A-II	A-II-100
149-160-008	A-II	A-II-100
149-160-009	A-II	A-II-100
149-160-011	A-II	A-II-100
149-160-012	A-II	A-II-100
149-160-013	A-II	A-II-100
149-160-014	A-II	A-II-100
149-160-015	A-II	A-II-100
149-160-018	A-II	A-II-100
149-160-020	A-II	A-II-100
149-160-021	A-II	A-II-100
149-160-022	A-II	A-II-100
149-160-023	A-II	A-II-100
149-160-024	A-II	A-II-100
149-160-025	A-II	A-II-100
149-160-026	A-II	A-II-100
149-160-027	A-II	A-II-100
149-160-029	A-II	A-II-40
149-160-031	A-II	A-II-100
149-160-032	A-II	A-II-100
149-160-033	A-II	A-II-100
149-160-034	A-II	A-II-100
149-170-003	A-II	A-II-100
149-170-005	A-II	A-II-100
149-170-006	A-II	A-II-40
149-170-008	A-II	A-II-100
149-170-011	A-II	A-II-100
149-170-012	A-II	A-II-40
149-170-013	A-II	A-II-40
149-170-014	A-II	A-II-40
149-170-016	A-II	A-II-40
149-170-017	A-II	A-II-40

\* Parcel removed from Urban Area boundary

\*\* Parcel removed from EDRN boundary

<b>RURAL REGIONS</b>		
<b>APN</b>	<b>Exist Land Use</b>	<b>Proposed Land Use</b>
149-170-018	A-II	A-II-100
149-170-022	A-II	A-II-100
149-170-023	A-II	A-II-100
149-170-024	A-II	A-II-100
149-170-025	A-II	A-II-40
149-170-026	A-II	A-II-100
149-170-027	A-II	A-II-100
149-170-029	A-II	A-II-100
149-170-030	A-II	A-II-100
149-170-034	A-II	A-II-100
149-170-036	A-II	A-II-40
149-170-037	A-II	A-II-40
149-170-038	A-II	A-II-100
149-170-039	A-II	A-II-100
149-170-040	A-II	A-II-100
149-170-041	A-II	A-II-100
149-180-001	A-II	A-II-100
149-180-003	A-II	A-II-100
149-180-004	A-II	A-II-100
149-180-005	A-II	A-II-100
149-180-006	A-II	A-II-100
149-180-007	A-II	A-II-100
149-180-008	A-II	A-II-100
149-180-009	A-II	A-II-100
149-180-010	A-II	A-II-100
149-180-011	A-II	A-II-100
149-180-013	A-II	A-II-100
149-180-014	A-II	A-II-40
149-180-015	A-II	A-II-40
149-180-016	A-II	A-II-40
149-180-017	A-II	A-II-40
149-180-018	A-II	A-II-40
149-180-019	A-II	A-II-40
149-180-020	A-II	A-II-40
149-180-021	A-II	A-II-40
149-180-022	A-II	A-II-100
149-180-024	A-II	A-II-100
149-180-026	A-II	A-II-100
149-180-028	A-II	A-II-40
149-180-029	A-II	A-II-40
149-180-030	A-II	A-II-40
149-180-031	A-II	A-II-100

\* Parcel removed from Urban Area boundary

\*\* Parcel removed from EDRN boundary

<b>RURAL REGIONS</b>		
<b>APN</b>	<b>Exist Land Use</b>	<b>Proposed Land Use</b>
149-180-032	A-II	A-II-40
149-180-034	A-II	A-II-40
149-180-035	A-II	A-II-40
149-190-001	A-II	A-II-100
149-190-002	A-II	A-II-100
149-190-003	A-II	A-II-100
149-190-005	A-II	A-II-100
149-190-006	A-II	A-II-100
149-190-007	A-II	A-II-100
149-190-008	A-II	A-II-100
149-190-009	A-II	A-II-100
149-190-010	A-II	A-II-100
149-190-011	A-II	A-II-100
149-190-012	A-II	A-II-100
149-190-013	A-II	A-II-100
149-190-014	A-II	A-II-100
149-190-015	A-II	A-II-100
149-190-016	A-II	A-II-100
149-190-017	A-II	A-II-100
149-190-018	A-II	A-II-100
149-190-020	A-II	A-II-100
149-190-021	A-II	A-II-100
149-190-022	A-II	A-II-100
149-190-023	A-II	A-II-100
149-190-024	A-II	A-II-100
149-190-025	A-II	A-II-100
149-190-026	A-II	A-II-100
149-190-027	A-II	A-II-100
149-190-028	A-II	A-II-100
149-190-029	A-II	A-II-100
149-190-030	A-II	A-II-100
149-190-031	A-II	A-II-100
149-190-032	A-II	A-II-100
149-190-033	A-II	A-II-100
149-190-034	A-II	A-II-100
149-200-001	A-II	A-II-100
149-200-003	A-II	A-II-100
149-200-004	A-II	A-II-100
149-200-005	A-II	A-II-100
149-200-006	A-II	A-II-100
149-200-007	A-II	A-II-100
149-200-008	A-II	A-II-100

\* Parcel removed from Urban Area boundary

\*\* Parcel removed from EDRN boundary

<b>RURAL REGIONS</b>		
<b>APN</b>	<b>Exist Land Use</b>	<b>Proposed Land Use</b>
149-200-009	A-II	A-II-100
149-200-010	A-II	A-II-100
149-200-011	A-II	A-II-100
149-200-012	A-II	A-II-100
149-200-013	A-II	A-II-100
149-200-015	A-II	A-II-100
149-200-016	A-II	A-II-100
149-200-017	A-II	A-II-100
149-200-018	A-II	A-II-100
149-200-019	A-II	A-II-100
149-200-020	A-II	A-II-100
149-200-021	A-II	A-II-100
149-200-022	A-II	A-II-100
149-200-023	A-II	A-II-100
149-200-024	A-II	A-II-100
149-210-001	A-II	A-II-100
149-210-002	A-II	A-II-100
149-210-003	A-II	A-II-100
149-210-004	A-II	A-II-100
149-210-005	A-II	A-II-100
149-210-006	A-II	A-II-100
149-210-008	A-II	A-II-100
149-210-010	A-II	A-II-100
149-210-011	A-II	A-II-40
149-210-013	A-II	A-II-100
149-210-015	A-II	A-II-100
149-210-016	A-II	A-II-100
149-210-017	A-II	A-II-100
149-210-020	A-II	A-II-100
149-210-023	A-II	A-II-100
149-210-024	A-II	A-II-100
149-220-002	A-II	A-II-40
149-220-003	A-II	A-II-40
149-220-007	A-II	A-II-40
149-220-009	A-II	A-II-100
149-220-010	A-II	A-II-100
149-220-011	A-II	A-II-40
149-220-012	A-II	A-II-40
149-220-013	A-II	A-II-40
149-220-014	A-II	A-II-40
149-220-016	A-II	A-II-100
149-220-017	A-II	A-II-100

\* Parcel removed from Urban Area boundary

\*\* Parcel removed from EDRN boundary

<b>RURAL REGIONS</b>		
<b>APN</b>	<b>Exist Land Use</b>	<b>Proposed Land Use</b>
149-220-018	A-II	A-II-40
149-220-019	A-II	A-II-40
149-220-020	A-II	A-II-40
149-220-021	A-II	A-II-40
149-220-023	A-II	A-II-40
149-220-025	A-II	A-II-40
149-220-027	A-II	A-II-40
149-220-029	A-II	A-II-40
149-220-030	A-II	A-II-100
149-220-032	A-II	A-II-40
149-220-033	A-II	A-II-100
149-220-034	A-II	A-II-100
149-220-042	A-II	A-II-40
149-220-046	A-II	A-II-40
149-220-047	A-II	A-II-40
149-220-049	A-II	A-II-40
149-220-051	A-II	A-II-40
149-220-052	A-II	A-II-40
149-220-053	A-II	A-II-40
149-220-056	A-II	A-II-40
149-220-057	A-II	A-II-40
149-220-061	A-II	A-II-40
149-220-062	A-II	A-II-100
149-220-063	A-II	A-II-40
149-220-064	A-II	A-II-40
149-230-001	A-II	A-II-100
149-230-002	A-II	A-II-100
149-230-003	A-II	A-II-40
149-230-004	A-II	A-II-40
149-230-005	A-II	A-II-40
149-230-007	A-II	A-II-40
149-230-008	A-II	A-II-100
149-230-009	A-II	A-II-100
149-230-010	A-II	A-II-100
149-230-011	A-II	A-II-100
149-230-012	A-II	A-II-100
149-230-013	A-II	A-II-100
149-230-016	A-II	A-II-40
149-230-017	A-II	A-II-40
149-230-022	A-II	A-II-40
149-230-025	A-II	A-II-100
149-230-028	A-II	A-II-100

\* Parcel removed from Urban Area boundary

\*\* Parcel removed from EDRN boundary

<b>RURAL REGIONS</b>		
<b>APN</b>	<b>Exist Land Use</b>	<b>Proposed Land Use</b>
149-230-031	A-II	A-II-40
149-230-032	A-II	A-II-40
149-230-033	A-II	A-II-40
149-230-034	A-II	A-II-40
149-230-036	A-II	A-II-40
149-230-037	A-II	A-II-40
149-230-038	A-II	A-II-40
149-230-039	A-II	A-II-40
149-230-040	A-II	A-II-40
149-230-041	A-II	A-II-40
149-230-042	A-II	A-II-40
149-230-043	A-II	A-II-40
149-230-044	A-II	A-II-40
149-230-047	A-II	A-II-40
149-230-048	A-II	A-II-40
149-230-049	A-II	A-II-40
149-230-053	A-II	A-II-40
149-230-055	A-II	A-II-40
149-230-056	A-II	A-II-40
149-230-059**	A-II	A-II-100
149-230-061	A-II	A-II-40
149-230-062	A-II	A-II-40
149-230-063	A-II	A-II-40
149-230-064	A-II	A-II-40
149-300-001	A-II	A-II-100
149-300-005	A-II	A-II-100
149-330-004	A-II	A-II-100
149-330-006	A-II	A-II-100
149-330-007	A-II	A-II-100
149-330-008	A-II	A-II-100
149-330-009	A-II	A-II-100
149-330-010	A-II	A-II-100
151-010-001	A-II	MA-320
151-010-002	A-II	A-II-100
151-010-003	A-II	A-II-100
151-010-004	A-II	A-II-100
151-010-005	A-II	A-II-100
151-010-006	A-II	A-II-100
151-010-007	A-II	A-II-100
151-010-008	A-II	A-II-100
151-010-009	A-II	A-II-100
151-010-010	A-II	A-II-100

\* Parcel removed from Urban Area boundary

\*\* Parcel removed from EDRN boundary

Ordinance 661 Consistency Rezone Phase II Project

Exhibit A - Amendments to the Santa Barbara County Comprehensive Plan Land Use Map by Parcel

Page 49

<b>RURAL REGIONS</b>		
<b>APN</b>	<b>Exist Land Use</b>	<b>Proposed Land Use</b>
151-010-011	A-II	A-II-100
151-010-012	A-II	MA-320
151-010-013	A-II	MA-320
151-010-014	A-II	MA-320
151-010-015	A-II	A-II-100
151-010-016	A-II	A-II-100
151-010-017	A-II	A-II-100
151-010-018	A-II	A-II-100
151-010-019	A-II	A-II-100
151-020-001	A-II	A-II-100
151-020-002	A-II	A-II-100
151-020-003	A-II	A-II-100
151-020-004	A-II	A-II-100
151-020-005	A-II	A-II-100
151-020-006	A-II	A-II-100
151-020-007	A-II	A-II-100
151-020-008	A-II	A-II-100
151-020-009	A-II	A-II-100
151-020-010	A-II	A-II-100
151-020-011	A-II	A-II-100
151-020-012	A-II	A-II-100
151-020-013	A-II	A-II-100
151-020-014	A-II	MA-320
151-020-016	A-II	MA-320
151-020-018	A-II	A-II-100
151-020-019	A-II	A-II-100
151-020-020	A-II	A-II-100
151-020-021	A-II	A-II-100
151-020-022	A-II	A-II-100
151-030-001	A-II	A-II-40
151-030-002	A-II	A-II-40
151-030-003	A-II	A-II-40
151-030-004	A-II	A-II-40
151-030-005	A-II	A-II-40
151-030-006	A-II	A-II-40
151-030-007	A-II	A-II-40
151-030-008	A-II	A-II-40
151-030-009	A-II	A-II-40
151-030-010	A-II	A-II-40
151-030-011	A-II	A-II-40
151-030-012	A-II	A-II-40
151-030-013	A-II	A-II-40

\* Parcel removed from Urban Area boundary

\*\* Parcel removed from EDRN boundary

<b>RURAL REGIONS</b>		
<b>APN</b>	<b>Exist Land Use</b>	<b>Proposed Land Use</b>
151-030-014	A-II	A-II-40
151-030-015	A-II	A-II-40
151-030-016	A-II	A-II-40
151-030-017	A-II	A-II-40
151-030-019	A-II	A-II-40
151-030-020	A-II	A-II-40
151-030-021	A-II	A-II-40
151-030-022	A-II	A-II-40
151-030-023	A-II	A-II-100
151-030-024	A-II	A-II-40
151-030-026	A-II	A-II-40
151-030-027	A-II	A-II-40
151-030-029	A-II	A-II-40
151-030-031	A-II	A-II-40
151-030-032	A-II	A-II-40
151-040-001	A-II	MA-320
151-040-002	A-II	MA-320
151-040-003	A-II	MA-320
151-040-004	A-II	MA-320
151-040-005	A-II	MA-320
151-040-006	A-II	MA-320
151-040-007	A-II	MA-320
151-040-008	A-II	MA-320
151-040-009	A-II	MA-320
151-040-010	A-II	MA-320
151-040-011	A-II	MA-320
151-040-012	A-II	MA-320
151-040-013	A-II	MA-320
151-040-014	A-II	MA-320
151-040-015	A-II	MA-320
151-040-016	A-II	MA-320
151-040-017	A-II	MA-320
151-040-018	A-II	MA-320
151-050-001	A-II	MA-320
151-050-002	A-II	MA-320
151-050-003	A-II	MA-320
151-050-004	A-II	A-II-100
151-050-005	A-II	A-II-100
151-050-006	A-II	A-II-100
151-050-007	A-II	A-II-100
151-050-008	A-II	MA-320
151-050-009	A-II	MA-320

\* Parcel removed from Urban Area boundary

\*\* Parcel removed from EDRN boundary



<b>RURAL REGIONS</b>		
<b>APN</b>	<b>Exist Land Use</b>	<b>Proposed Land Use</b>
151-050-010	A-II	MA-320
151-050-011	A-II	MA-320
151-050-012	A-II	MA-320
151-050-013	A-II	MA-320
151-050-014	A-II	MA-320
151-050-015	A-II	MA-320
151-050-016	A-II	MA-320
151-050-017	A-II	MA-320
151-050-018	A-II	MA-320
151-060-001	A-II	A-II-100
151-060-002	A-II	A-II-40
151-060-005	A-II	A-II-100
151-060-007	A-II	A-II-40
151-060-008	A-II	A-II-100
151-060-009	A-II	A-II-100
151-060-010	A-II	A-II-40
151-060-011	A-II	A-II-40
151-070-001	A-II	A-II-100
151-070-002	A-II	A-II-100
151-070-003	A-II	MA-320
151-070-004	A-II	MA-320
151-080-001	A-II	MA-320
151-080-002	A-II	MA-320
151-080-003	A-II	MA-320
151-080-004	A-II	MA-320
151-080-005	A-II	MA-320
151-080-006	A-II	MA-320
151-080-007	A-II	MA-320
151-080-008	A-II	MA-320
151-080-009	A-II	MA-320
151-080-010	A-II	MA-320
151-080-011	A-II	MA-320
151-080-012	A-II	MA-320
151-080-013	A-II	MA-320
151-080-014	A-II	MA-320
151-080-015	A-II	MA-320
151-080-016	A-II	MA-320
151-080-017	A-II	MA-320
151-080-018	A-II	MA-320
151-090-001	A-II	MA-320
151-090-002	A-II	MA-320
151-090-003	A-II	MA-320

\* Parcel removed from Urban Area boundary  
 \*\* Parcel removed from EDRN boundary

<b>RURAL REGIONS</b>		
<b>APN</b>	<b>Exist Land Use</b>	<b>Proposed Land Use</b>
151-090-004	A-II	MA-320
151-090-005	A-II	MA-320
151-090-006	A-II	MA-320
151-090-007	A-II	MA-320
151-090-008	A-II	MA-320
151-090-009	A-II	MA-320
151-090-010	A-II	MA-320
151-090-011	A-II	MA-320
151-090-012	A-II	MA-320
151-090-013	A-II	MA-320
151-090-014	A-II	MA-320
151-090-015	A-II	MA-320
151-090-016	A-II	MA-320
151-090-017	A-II	MA-320
151-090-018	A-II	MA-320
151-090-019	A-II	MA-320
151-090-020	A-II	MA-320
151-100-001	A-II	MA-320
151-100-002	A-II	MA-320
151-100-003	A-II	MA-320
151-100-004	A-II	MA-320
151-100-005	A-II	MA-320
151-100-006	A-II	MA-320
151-100-007	A-II	MA-320
151-100-008	A-II	MA-320
151-100-009	A-II	MA-320
151-100-010	A-II	MA-320
151-100-011	A-II	MA-320
151-100-012	A-II	MA-320
151-100-013	A-II	MA-320
151-100-014	A-II	MA-320
151-100-015	A-II	MA-320
151-100-016	A-II	MA-320
151-100-017	A-II	A-II-100
151-100-018	A-II	MA-320
151-100-019	A-II	MA-320
151-100-020	A-II	MA-320
151-110-001	A-II	MA-320
151-110-002	A-II	MA-320
151-110-003	A-II	MA-320
151-110-004	A-II	MA-320
151-110-005	A-II	MA-320

\* Parcel removed from Urban Area boundary

\*\* Parcel removed from EDRN boundary

<b>RURAL REGIONS</b>		
<b>APN</b>	<b>Exist Land Use</b>	<b>Proposed Land Use</b>
151-110-006	A-II	MA-320
151-110-007	A-II	MA-320
151-110-008	A-II	MA-320
151-110-009	A-II	MA-320
151-110-010	A-II	MA-320
151-110-011	A-II	MA-320
151-110-012	A-II	MA-320
151-110-013	A-II	MA-320
151-110-014	A-II	MA-320
151-110-015	A-II	MA-320
151-110-016	A-II	MA-320
151-110-017	A-II	MA-320
151-110-018	A-II	MA-320
151-110-019	A-II	MA-320
151-110-020	A-II	MA-320
151-110-021	A-II	MA-320
151-120-001	A-II	MA-320
151-120-002	A-II	MA-320
151-120-003	A-II	MA-320
151-120-004	A-II	MA-320
151-120-005	A-II	MA-320
151-120-006	A-II	MA-320
151-120-007	A-II	MA-320
151-120-008	A-II	A-II-100
151-120-009	A-II	MA-320
151-120-010	A-II	MA-320
151-120-011	A-II	MA-320
151-120-012	A-II	MA-320
151-120-013	A-II	MA-320
151-120-014	A-II	MA-320
151-120-015	A-II	MA-320
151-120-016	A-II	MA-320
151-120-017	A-II	MA-320
151-120-018	A-II	MA-320
151-120-019	A-II	MA-320
151-120-020	A-II	MA-320
151-120-021	A-II	MA-320
151-120-022	A-II	MA-320
151-130-001	A-II	MA-320
151-130-002	A-II	MA-320
151-130-003	A-II	MA-320
151-130-004	A-II	MA-320

\* Parcel removed from Urban Area boundary  
 \*\* Parcel removed from EDRN boundary

<b>RURAL REGIONS</b>		
<b>APN</b>	<b>Exist Land Use</b>	<b>Proposed Land Use</b>
151-130-005	A-II	MA-320
151-130-006	A-II	MA-320
151-130-007	A-II	MA-320
151-130-008	A-II	MA-320
151-130-009	A-II	MA-320
151-130-010	A-II	MA-320
151-130-011	A-II	MA-320
151-130-012	A-II	MA-320
151-130-013	A-II	MA-320
151-130-014	A-II	MA-320
151-130-015	A-II	MA-320
151-130-016	A-II	MA-320
151-130-017	A-II	MA-320
151-130-018	A-II	MA-320
151-130-019	A-II	MA-320
151-140-001	A-II	MA-320
151-140-002	A-II	MA-320
151-140-003	A-II	MA-320
151-140-005	A-II	MA-320
151-140-006	A-II	MA-320
151-140-007	A-II	MA-320
151-140-008	A-II	MA-320
151-140-009	A-II	MA-320
151-140-010	A-II	MA-320
151-140-011	A-II	MA-320
151-140-012	A-II	MA-320
151-140-013	A-II	MA-320
151-140-014	A-II	MA-320
151-140-015	A-II	MA-320
151-140-016	A-II	MA-320
151-140-017	A-II	MA-320
151-140-018	A-II	MA-320
151-140-019	A-II	MA-320
151-140-020	A-II	A-II-100
151-140-021	A-II	A-II-100
151-150-001	A-II	MA-320
151-150-002	A-II	MA-320
151-150-003	A-II	MA-320
151-150-004	A-II	MA-320
151-150-005	A-II	MA-320
151-150-006	A-II	MA-320
151-150-007	A-II	MA-320

\* Parcel removed from Urban Area boundary

\*\* Parcel removed from EDRN boundary

<b>RURAL REGIONS</b>		
<b>APN</b>	<b>Exist Land Use</b>	<b>Proposed Land Use</b>
151-150-008	A-II	MA-320
151-150-009	A-II	MA-320
151-150-010	A-II	MA-320
151-150-011	A-II	MA-320
151-150-012	A-II	MA-320
151-150-013	A-II	MA-320
151-150-014	A-II	MA-320
151-150-015	A-II	MA-320
151-150-016	A-II	MA-320
151-150-017	A-II	MA-320
151-150-018	A-II	MA-320
151-150-019	A-II	MA-320
151-160-001	A-II	MA-320
151-160-002	A-II	MA-320
151-160-003	A-II	MA-320
151-160-004	A-II	MA-320
151-160-005	A-II	MA-320
151-160-006	A-II	MA-320
151-160-007	A-II	MA-320
151-160-008	A-II	MA-320
151-160-009	A-II	MA-320
151-160-010	A-II	MA-320
151-160-011	A-II	MA-320
151-160-012	A-II	MA-320
151-160-013	A-II	MA-320
151-160-014	A-II	MA-320
151-160-015	A-II	MA-320
151-160-016	A-II	MA-320
151-160-017	A-II	MA-320
151-160-018	A-II	MA-320
151-160-019	A-II	MA-320
151-160-020	A-II	MA-320
151-170-001	A-II	MA-320
151-170-002	A-II	MA-320
151-170-003	A-II	MA-320
151-170-004	A-II	MA-320
151-170-005	A-II	MA-320
151-170-006	A-II	MA-320
151-170-007	A-II	MA-320
151-170-008	A-II	MA-320
151-170-009	A-II	MA-320
151-170-010	A-II	MA-320

\* Parcel removed from Urban Area boundary

\*\* Parcel removed from EDRN boundary

<b>RURAL REGIONS</b>		
<b>APN</b>	<b>Exist Land Use</b>	<b>Proposed Land Use</b>
151-170-011	A-II	MA-320
151-170-012	A-II	MA-320
151-170-013	A-II	MA-320
151-170-014	A-II	MA-320
151-170-015	A-II	MA-320
151-170-016	A-II	MA-320
151-170-017	A-II	MA-320
151-170-018	A-II	MA-320
151-180-001	A-II	MA-320
151-180-002	A-II	MA-320
151-180-003	A-II	MA-320
151-180-004	A-II	MA-320
151-180-005	A-II	MA-320
151-180-006	A-II	MA-320
151-180-007	A-II	MA-320
151-180-008	A-II	MA-320
151-180-009	A-II	MA-320
151-180-019	A-II	MA-320
151-180-027	MA-100	MA-320
151-180-028	A-II	MA-320
151-180-029	A-II	MA-320
151-180-030	A-II	MA-320
151-180-032	A-II	MA-320
151-180-033	A-II	MA-320
151-180-034	A-II	MA-320
151-180-035	A-II	MA-320
151-180-036	A-II	MA-320
151-180-037	A-II	MA-320
151-190-001	A-II	A-II-100
151-190-002	A-II	MA-320
151-190-003	A-II	MA-320
151-190-004	A-II	MA-320
151-190-005	A-II	MA-320
151-190-006	A-II	MA-320
151-190-007	A-II	MA-320
151-190-008	A-II	MA-320
151-190-009	A-II	MA-320
151-190-010	A-II	MA-320
151-190-011	A-II	MA-320
151-190-012	A-II	MA-320
151-190-013	A-II	MA-320
151-190-014	A-II	MA-320

\* Parcel removed from Urban Area boundary

\*\* Parcel removed from EDRN boundary

<b>RURAL REGIONS</b>		
<b>APN</b>	<b>Exist Land Use</b>	<b>Proposed Land Use</b>
151-190-015	A-II	MA-320
151-190-016	MA-100	MA-320
151-190-017	MA-100	MA-320
151-190-018	A-II-100	A-II-100
151-190-019	MA-100	MA-320
151-190-020	MA-100	MA-320
151-190-021	MA-100	MA-320
151-190-022	MA-100	MA-320
153-010-002	A-II	A-II-100
153-010-003	A-II	A-II-100
153-010-004	A-II	A-II-100
153-010-007	A-II	A-II-100
153-010-008	A-II	A-II-100
153-010-009	A-II	A-II-100
153-010-011	A-II	A-II-100
153-010-012	A-II	A-II-100
153-010-013	A-II	A-II-100
153-010-015	A-II	A-II-100
153-010-016	A-II	A-II-100
153-010-019	A-II	A-II-100
153-010-020	A-II	A-II-100
153-010-021	A-II	A-II-100
153-010-022	A-II	A-II-100
153-010-023	A-II	A-II-100
153-010-024	A-II	A-II-100
153-010-025	A-II	A-II-100
153-010-026	A-II	A-II-100
153-010-027	A-II	A-II-100
153-010-028	A-II	A-II-100
153-010-029	A-II	A-II-100
153-010-030	A-II	A-II-100
153-010-031	A-II	A-II-100
153-010-032	A-II	A-II-100
153-020-001	A-II	A-II-100
153-020-002	A-II	A-II-100
153-020-003	A-II	A-II-100
153-020-004	A-II	A-II-100
153-020-005	A-II	A-II-100
153-020-007	A-II	A-II-100
153-020-008	A-II	A-II-100
153-020-009	A-II	A-II-100
153-020-010	A-II	A-II-100

\* Parcel removed from Urban Area boundary

\*\* Parcel removed from EDRN boundary

<b>RURAL REGIONS</b>		
<b>APN</b>	<b>Exist Land Use</b>	<b>Proposed Land Use</b>
153-020-011	A-II	A-II-100
153-020-011	RECREATION/OPEN SPACE	RECREATION/OPEN SPACE
153-020-012	A-II	A-II-100
153-020-014	A-II	A-II-100
153-030-001	A-II	MA-320
153-030-002	A-II	MA-320
153-030-003	A-II	MA-320
153-030-004	A-II	MA-320
153-030-005	A-II	MA-320
153-030-006	A-II	MA-320
153-030-007	A-II	MA-320
153-030-008	A-II	MA-320
153-030-009	A-II	MA-320
153-030-010	A-II	MA-320
153-030-011	A-II	MA-320
153-030-012	A-II	MA-320
153-030-013	A-II	MA-320
153-030-014	A-II	MA-320
153-030-015	A-II	MA-320
153-030-016	A-II	MA-320
153-030-017	A-II	MA-320
153-030-018	A-II-100	MA-320
153-030-018	A-II	MA-320
153-030-019	A-II-100	MA-320
153-030-019	A-II	MA-320
153-030-020	A-II-100	MA-320
153-030-020	A-II	MA-320
153-030-021	A-II-100	MA-320
153-030-021	A-II	MA-320
153-030-022	A-II-100	MA-320
153-030-022	A-II	MA-320
153-030-023	A-II-100	MA-320
153-030-023	A-II	MA-320
153-030-024	A-II	MA-320
153-040-001	A-II	A-II-100
153-040-002	A-II	A-II-100
153-040-004	A-II	A-II-100
153-040-005	A-II	A-II-100
153-040-016	A-II	A-II-100
153-040-017	A-II	A-II-100
153-040-018	A-II	A-II-100
153-040-019	A-II	A-II-100

\* Parcel removed from Urban Area boundary

\*\* Parcel removed from EDRN boundary



<b>RURAL REGIONS</b>		
<b>APN</b>	<b>Exist Land Use</b>	<b>Proposed Land Use</b>
153-040-020	A-II	A-II-100
153-040-021	A-II	A-II-100
153-040-022	A-II	A-II-100
153-040-023	A-II	A-II-100
153-040-024	A-II	A-II-100
153-040-025	A-II	A-II-100
153-040-026	A-II	A-II-100
153-040-027	A-II	A-II-100
153-080-005	A-II-100	A-II-100
153-080-007	A-II-100	A-II-100
153-080-019	A-II-100	A-II-100
153-160-001	A-II	A-II-100
153-160-004	A-II-100	A-II-100
153-160-006	A-II-100	A-II-100
153-160-009	A-II-100	A-II-100
153-160-011	A-II-100	A-II-100
153-160-016	A-II-100	A-II-100
153-160-017	A-II-100	A-II-100
153-160-017	A-II	A-II-100
153-160-034	A-II-100	A-II-100
153-160-054	A-II-100	A-II-100
153-240-002	A-II-100	MA-320
153-240-007	A-II-100	MA-320
153-240-008	A-II-100	MA-320
153-240-019	A-II-100	A-II-100
153-240-019	MA-40	MA-100
153-240-020	OTHER OPEN LANDS	OTHER OPEN LANDS
153-240-023	A-II-100	MA-320
153-250-001	A-II-100	MA-320
153-250-002	A-II-100	MA-320
153-250-004	OTHER OPEN LANDS	OTHER OPEN LANDS
153-250-006	A-II-100	MA-320
153-250-007	A-II	MA-320
153-250-008	A-II	MA-320
153-250-009	OTHER OPEN LANDS	OTHER OPEN LANDS
153-250-010	MA-100	A-II-40
153-250-010	A-II-100	A-II-40
153-250-011	MA-100	A-II-40
153-250-012	A-II-100	A-II-40
153-250-013	OTHER OPEN LANDS	OTHER OPEN LANDS
153-250-014	MA-100	A-II-40
153-250-015	MA-100	A-II-40

\* Parcel removed from Urban Area boundary

\*\* Parcel removed from EDRN boundary

<b>RURAL REGIONS</b>		
<b>APN</b>	<b>Exist Land Use</b>	<b>Proposed Land Use</b>
153-250-016	OTHER OPEN LANDS	OTHER OPEN LANDS
153-250-017	A-II-100	MA-320
153-250-017	A-II	MA-320
153-250-018	MA-40	MA-100
153-250-021	A-II-100	MA-320
153-250-022	A-II-100	MA-320
153-250-023	A-II-100	MA-320
153-250-024	A-II-100	MA-320
153-270-001	OTHER OPEN LANDS	OTHER OPEN LANDS
153-270-002	OTHER OPEN LANDS	OTHER OPEN LANDS
153-270-003	OTHER OPEN LANDS	OTHER OPEN LANDS
153-270-004	OTHER OPEN LANDS	OTHER OPEN LANDS
153-270-008	MA-40	MA-40
153-270-009	OTHER OPEN LANDS	OTHER OPEN LANDS
153-270-010	MA-40	MA-100
153-270-011	MA-40	MA-100
153-270-013	OTHER OPEN LANDS	OTHER OPEN LANDS
153-270-014	OTHER OPEN LANDS	OTHER OPEN LANDS
153-270-015	OTHER OPEN LANDS	OTHER OPEN LANDS
153-270-016	MA-40	MA-40
153-270-020	MA-40	MA-40
153-270-022	MA-40	MA-40
153-270-028	MA-40	MA-40
153-270-029	MA-40	MA-40
153-270-031	MA-40	MA-40
153-270-033	MA-40	MA-40
153-280-001	OTHER OPEN LANDS	OTHER OPEN LANDS
153-280-002	OTHER OPEN LANDS	OTHER OPEN LANDS
153-280-003	MA-40	MA-100
153-280-003	MA-100	MA-100
153-280-011	MA-40	MA-40
153-280-016	MA-40	MA-40
153-280-020	MA-40	MA-40
153-280-021	MA-40	MA-40
153-380-001	A-II	A-II-100
153-380-002	A-II	A-II-100
153-380-003	A-II	A-II-100
153-380-004	A-II	A-II-100
153-380-005	A-II	A-II-100
153-380-006	A-II	A-II-100
153-380-007	A-II	A-II-100
155-020-001	A-II-40	MA-320

\* Parcel removed from Urban Area boundary

\*\* Parcel removed from EDRN boundary

<b>RURAL REGIONS</b>		
<b>APN</b>	<b>Exist Land Use</b>	<b>Proposed Land Use</b>
155-170-016	MA-100	MA-100
155-170-047	A-II-40	A-II-100
155-170-048	A-II-40	A-II-100
155-170-050	A-II-40	A-II-100
155-170-069	A-II-100	A-II-100
155-170-069	A-II-40	A-II-100
155-170-085	A-II-40	A-II-100
155-170-087	A-II-40	A-II-100
155-170-088	A-II-40	A-II-100
155-190-009	MA-100	MA-320
155-190-010	MA-100	MA-320
155-190-012	MA-100	MA-100
155-190-013	MA-100	MA-320
155-190-014	MA-100	MA-320
155-190-015	MA-40	MA-100
155-190-015	MA-100	MA-100
155-190-018	MA-100	MA-320
155-190-019	MA-100	MA-320
155-190-020	MA-100	MA-320
155-190-021	MA-100	MA-100
155-190-022	MA-100	MA-320
155-190-023	MA-100	MA-320
155-190-024	MA-100	MA-320
155-190-030	MA-100	MA-100
155-190-037	A-II-40	A-II-100
155-190-038	A-II-40	A-II-100
155-190-041	A-II-40	A-II-100
155-190-042	A-II-40	A-II-100
155-190-044	A-II-40	A-II-100
155-190-045	A-II-40	A-II-100
155-190-046	A-II-100	A-II-100
155-190-046	A-II-40	A-II-100
155-190-049	A-II-100	A-II-100
155-190-051	A-II-40	A-II-100
155-190-052	A-II-100	A-II-100
155-190-053	A-II-100	A-II-100
155-190-054	A-II-40	A-II-100
155-190-055	A-II-40	A-II-100
155-190-056	A-II-40	A-II-100
155-190-057	A-II-40	A-II-100
155-200-012	A-II-100	MA-320
155-200-013	A-II-100	A-II-100

\* Parcel removed from Urban Area boundary

\*\* Parcel removed from EDRN boundary

<b>RURAL REGIONS</b>		
<b>APN</b>	<b>Exist Land Use</b>	<b>Proposed Land Use</b>
155-200-023	A-II-100	A-II-100
155-200-024	A-II-100	MA-320
155-200-025	A-II-100	A-II-40
155-200-027	A-II-100	A-II-40
155-200-042	A-II-100	A-II-100
155-200-067	A-II-100	A-II-100
155-200-085	A-II-100	A-II-100
155-220-001	A-II-40	MA-320

\* Parcel removed from Urban Area boundary

\*\* Parcel removed from EDRN boundary

\* Parcel removed from Urban Area boundary

\*\* Parcel removed from EDRN boundary

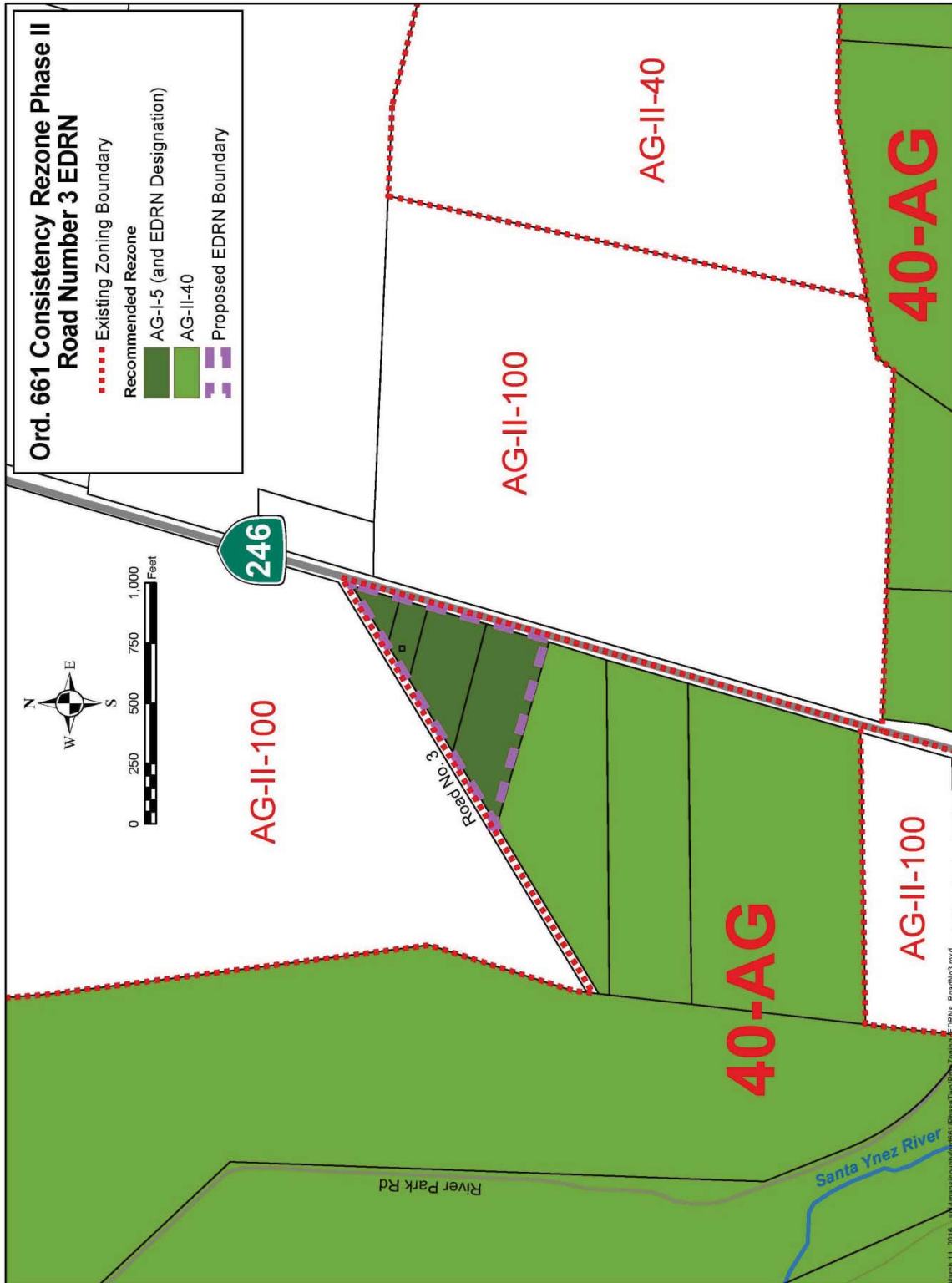
## **EXHIBIT B**

### Project Maps

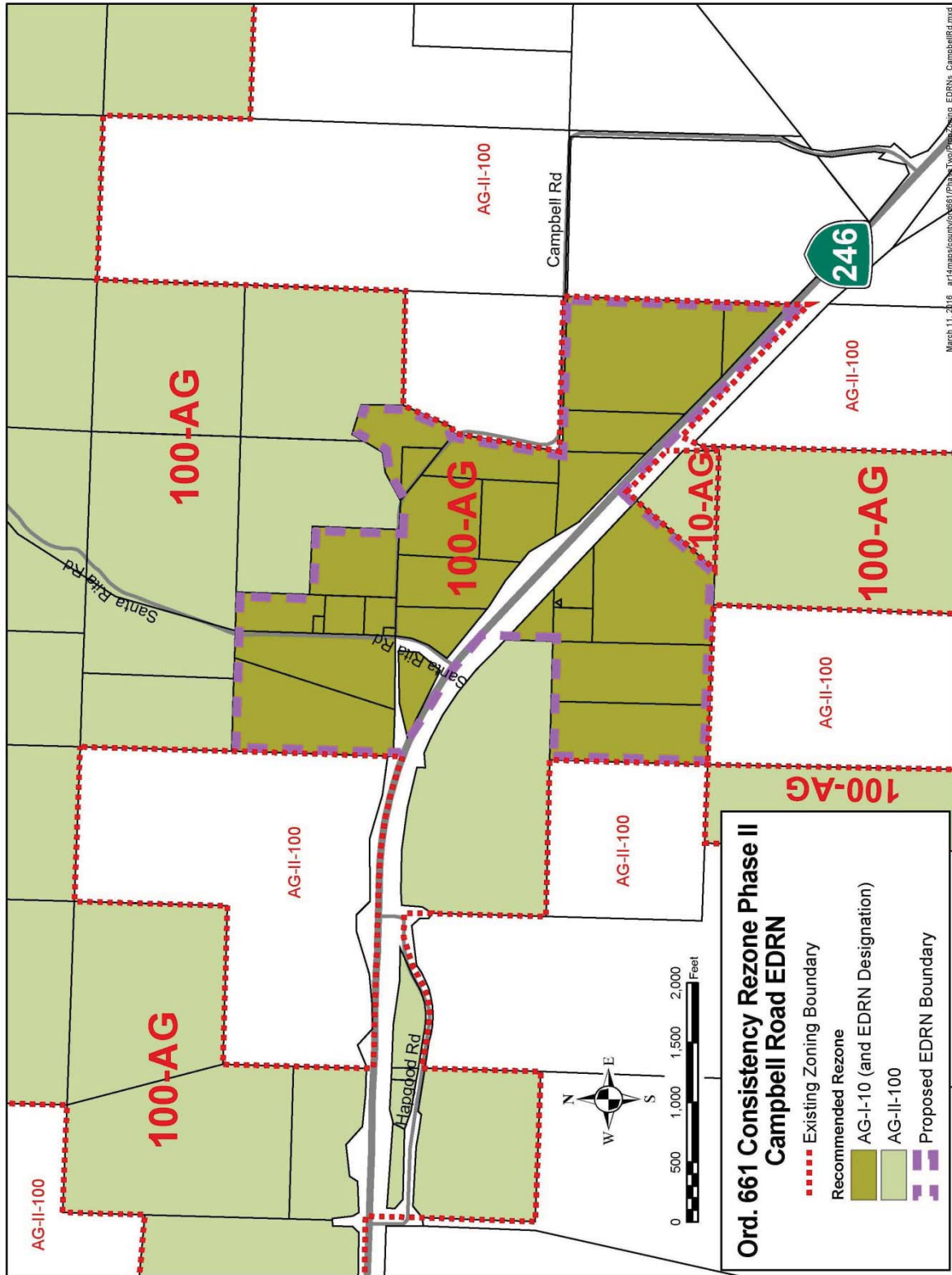
To view a pdf of any of the following maps please visit:

[http://longrange.sbcountyplanning.org/programs/661%20Phase%20II/ord661\\_phase2.php](http://longrange.sbcountyplanning.org/programs/661%20Phase%20II/ord661_phase2.php)

**Exhibit B - Figure 1 Proposed EDRN - Road Number 3**



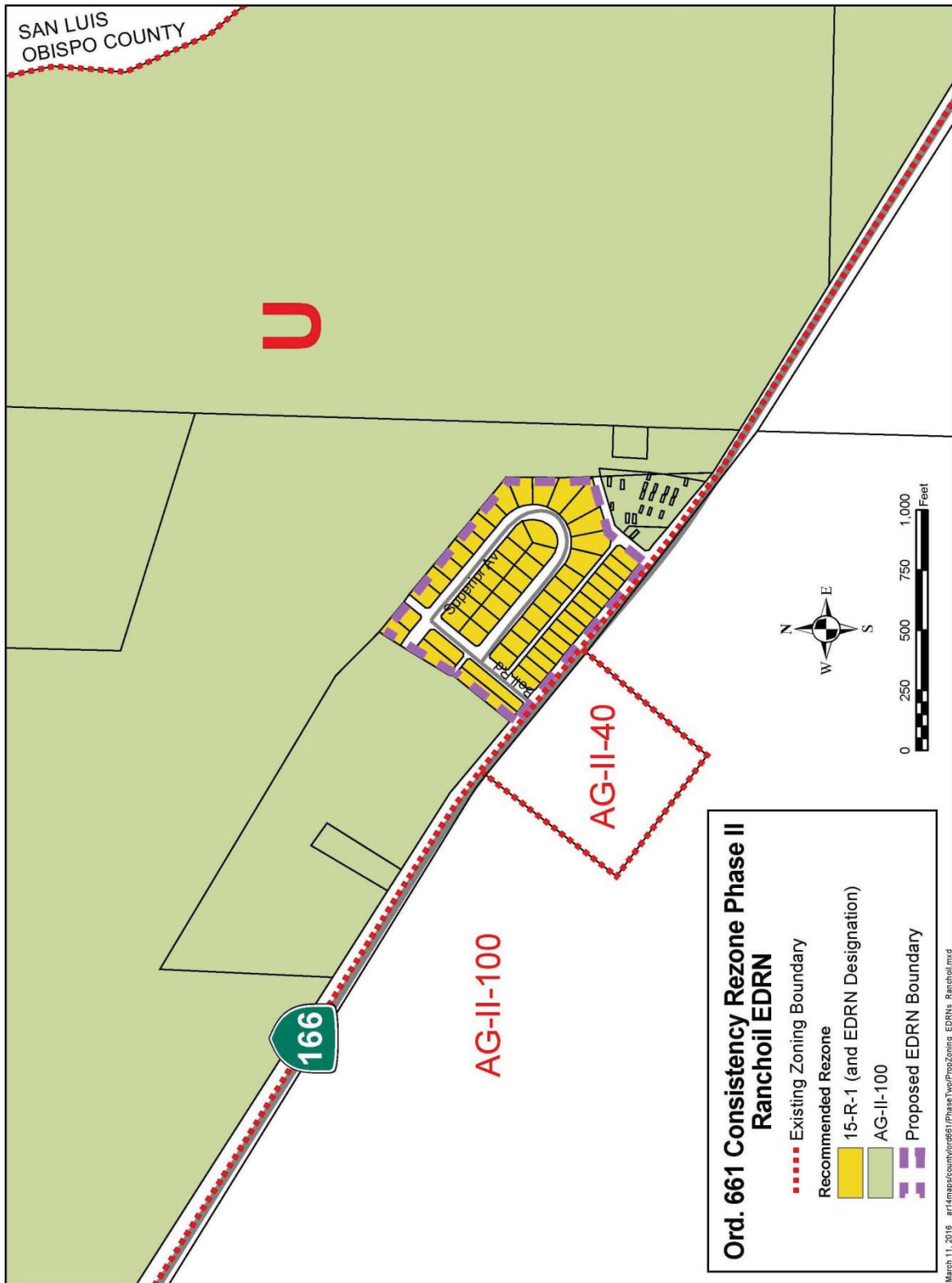
### Exhibit B - Figure 2 Proposed EDRN - Campbell Rd Area



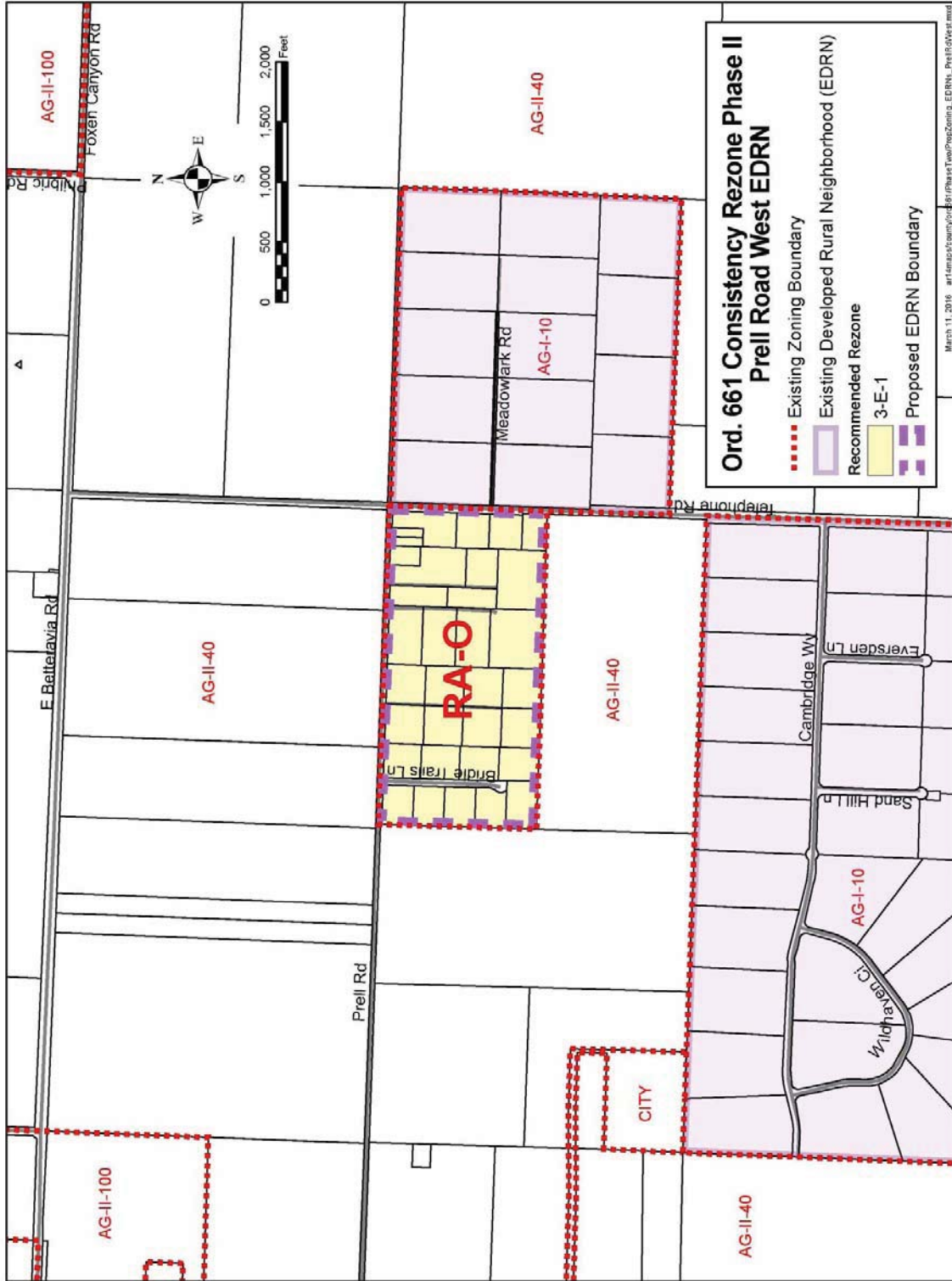




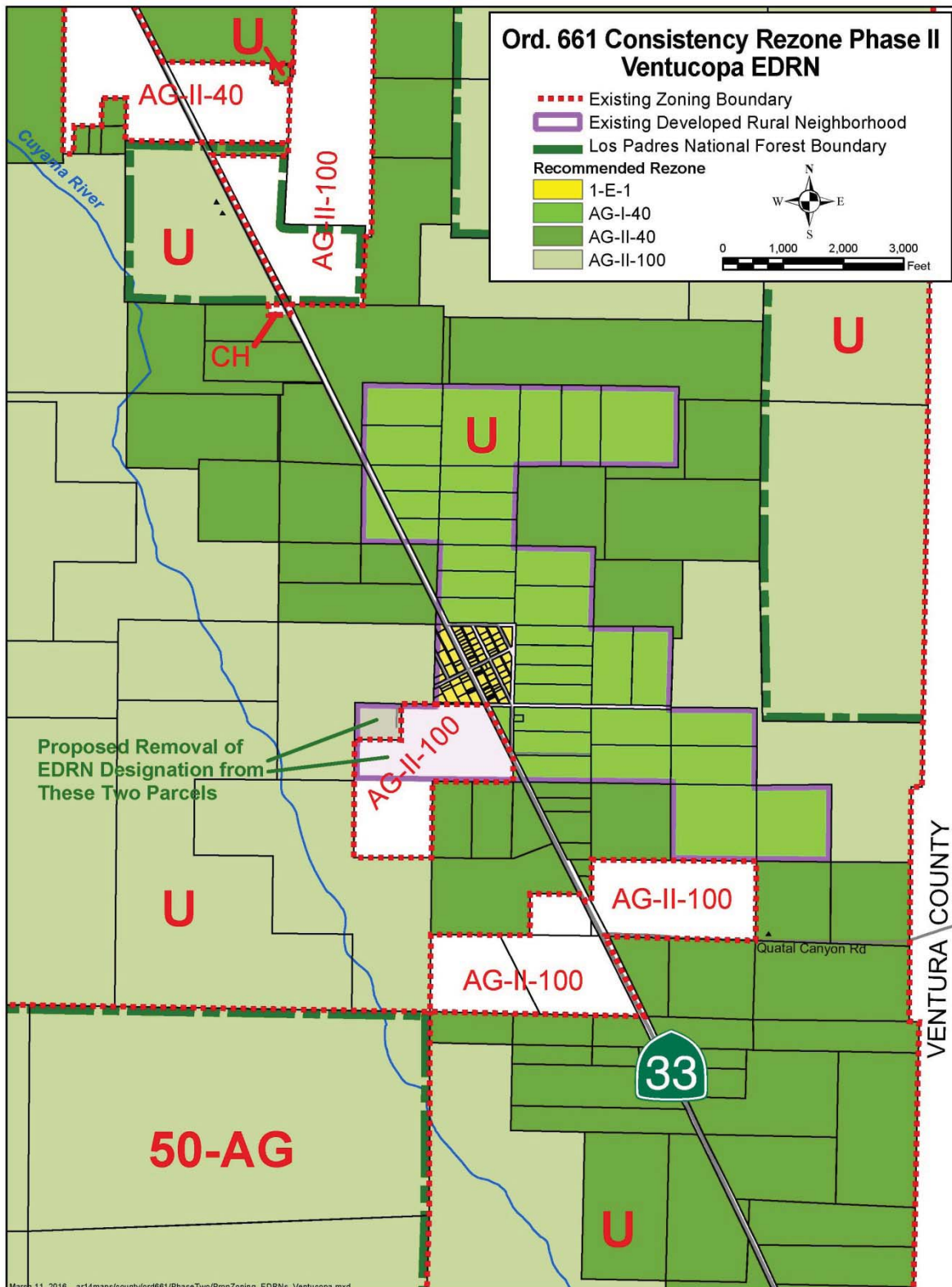
**Exhibit B - Figure 4 Proposed EDRN - Ranchoil**



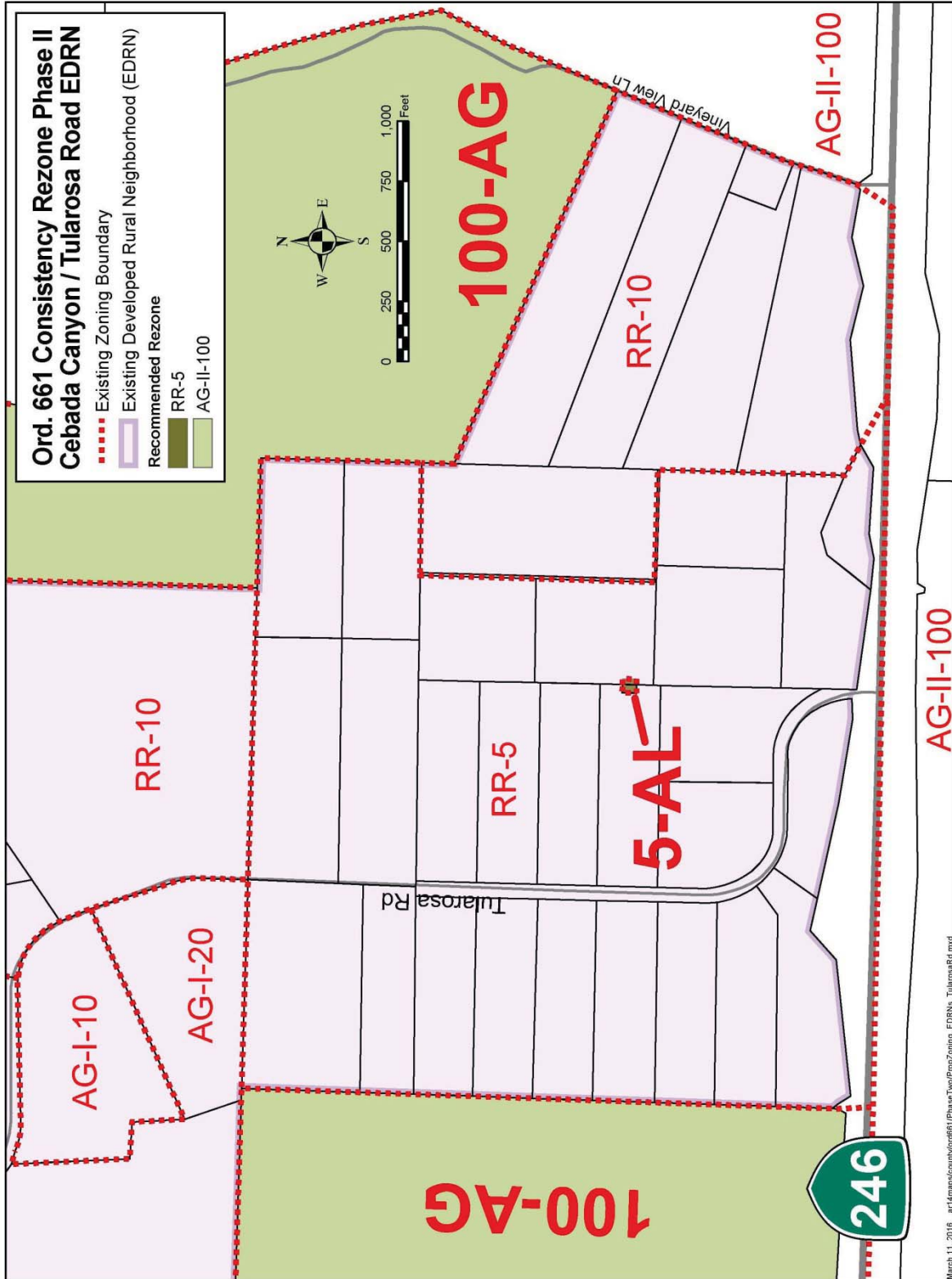
### Exhibit B - Figure 5 Proposed EDRN - Prell Road West



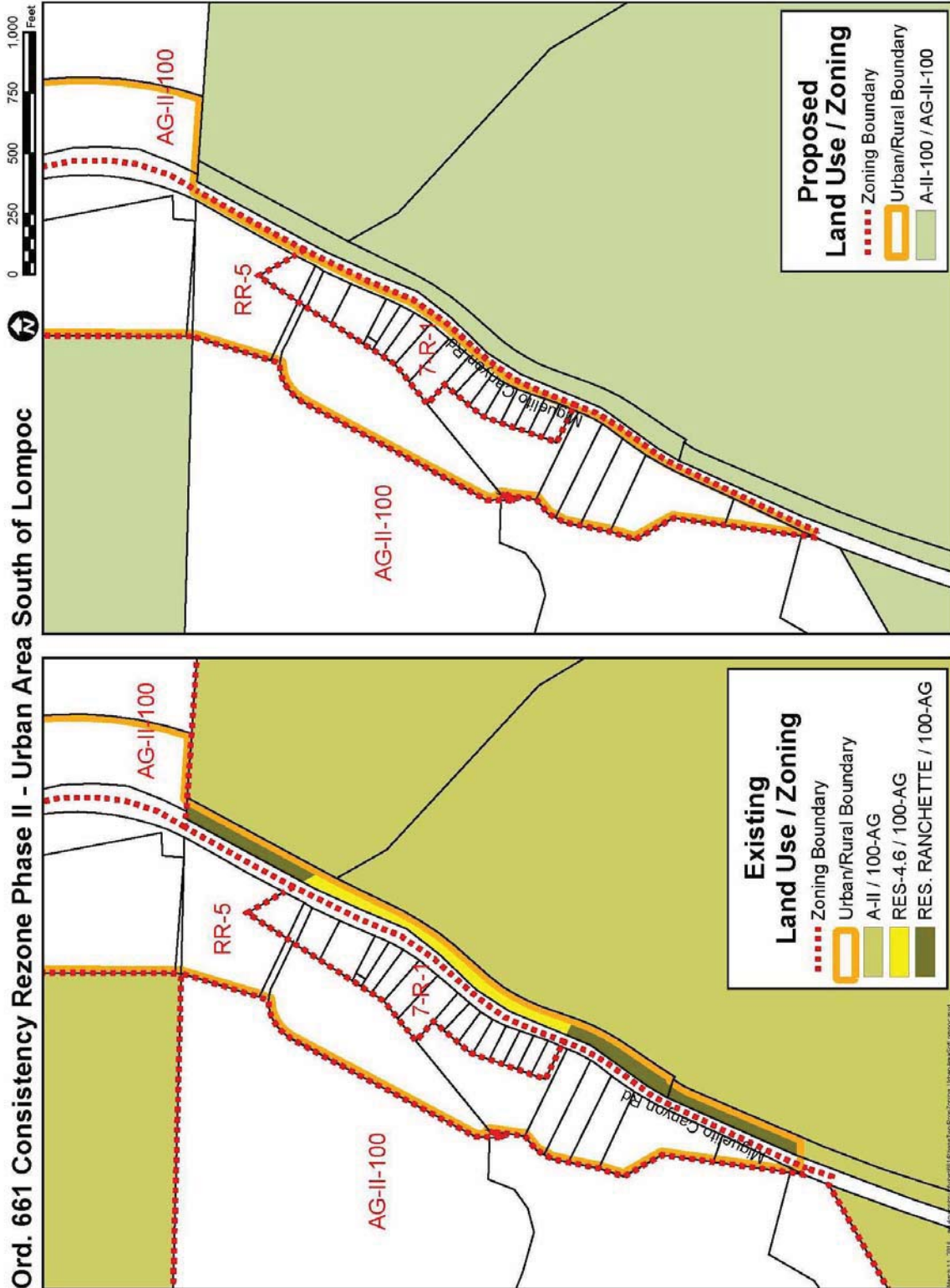
**Exhibit B - Figure 6 Existing EDRN - Ventucopa**



**Exhibit B - Figure 7 Existing EDRN - Cebada Canyon/Tularosa**



**Exhibit B - Figure 8 Urban/Rural Boundary Line Adjustment - South of the City of Lompoc**



**Exhibit B - Figure 9 Urban \Rural Boundary Line Adjustment - East of the City of Lompoc**

