

# Addendum to the Countywide Siting Element

# Santa Maria Valley Wasteshed

- 1950 the Santa Maria Regional Landfill was opened at its current location
- "Santa Maria Valley Wasteshed"
  - Orcutt and unincorporated areas
  - City of Santa Maria
- Santa Maria Regional Landfill will reach capacity in 2015, based on current waste flow and landfilling methods

# Santa Maria Regional Landfill

- 291 Acre Facility
- Landfill gas used to produce electricity for Marian Medical Center
- Green waste collection
- Recycle Center
- Household Hazardous Waste Facility
- Concrete and Asphalt Recycling
- Agriculture Plastic Recycling
- Textile Recycling

# Solid Waste Planning

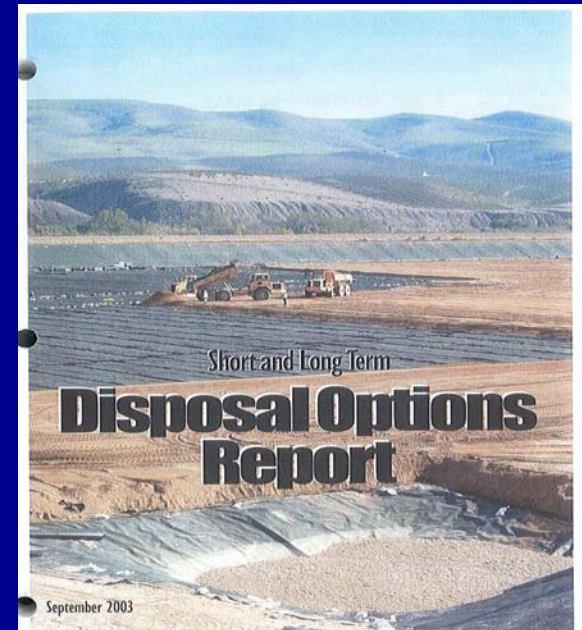
- The Multi-Jurisdictional Solid Waste Task Group (MJSWTG) was created to provide the communities within Santa Barbara County as a forum to discuss and plan long-term solid waste management strategies and facilities in 2001.

# Solid Waste Planning

- **Guiding Principals of the MJSWTG:**
  - Local Control
  - Regional Service
  - Waste Diversion
  - Economic Efficiencies
  - Reliability
  - Flexibility

# Solid Waste Planning

MJSWTG recommendation: A new landfill should be sited in Northern Santa Barbara County prior to the closure of the existing Santa Maria Regional Landfill. The City of Santa Maria was assigned the lead in this pursuit.

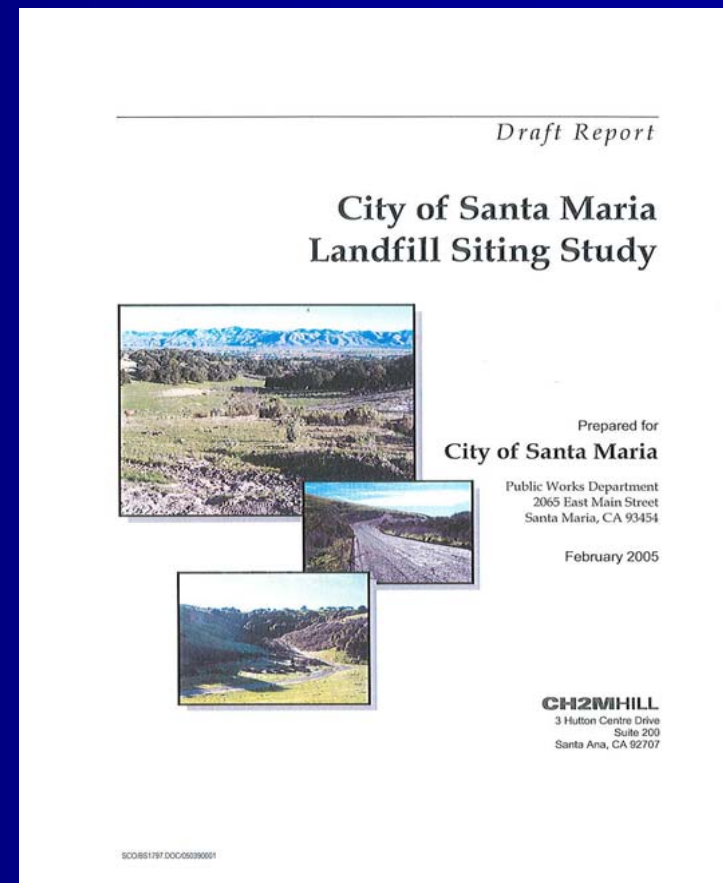


# Criteria for Site Selection

- Landfill design
- Visual Impact
- Cultural Resources
- Access
- Infrastructure
- Land Use Compatibility
- Geology
- Topography
- Hydrology
- Biological resources

# Site Search

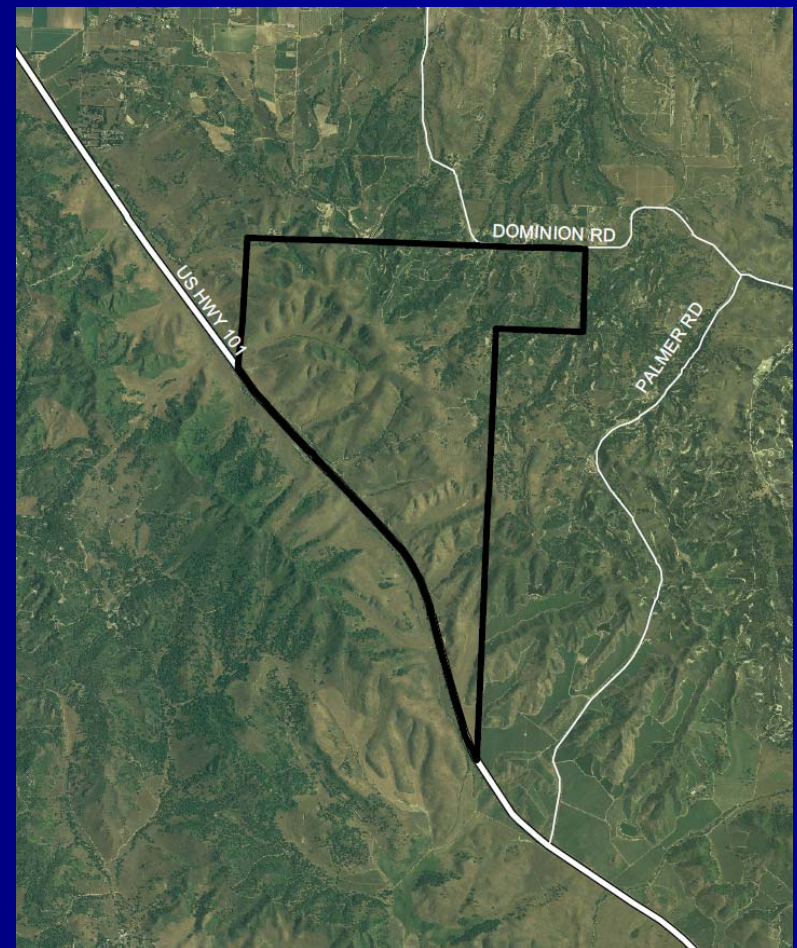
Siting Study  
found four sites  
in Santa Maria  
Wasteshed







Los Flores Ranch  
Purchased 2006  
1,774 Acres



# VICINITY MAP



# Historical Use at Los Flores

Oil  
Extraction



Cattle  
Grazing

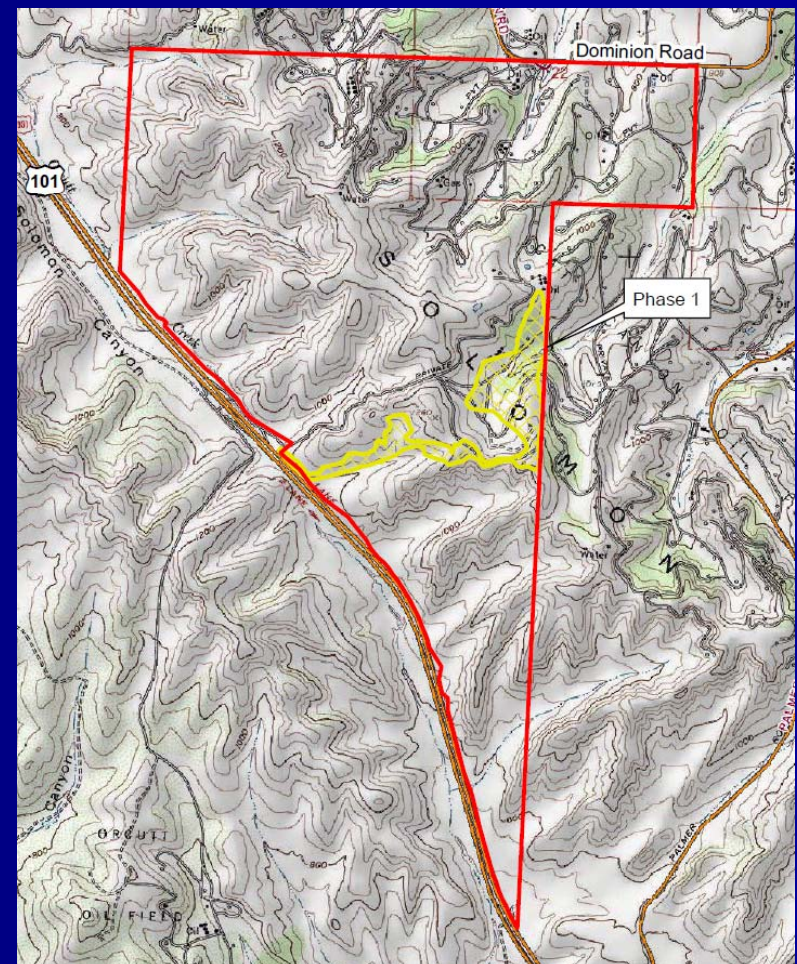
# Conceptual Design Los Flores Ranch

- IWMF over 90 Year solid waste capacity on a 286 acres footprint
- Commercial solid waste vehicles only at Los Flores
- Existing landfill open to public with transfer facility to Los Flores Ranch
- Recycling and green waste at existing landfill

# IWWMF Footprint for 25 Years

Footprint includes:

- Access Road
- Scale House
- Solid Waste
- Other areas



# Los Flores Ranch Park Passive Recreation



# Environmental Impact Report

An Environmental Impact Report was produced to study the impacts of the project on the environment and identify mitigation measures to offset those impacts.

# Environmental Impact Analysis

- Aesthetics
- Air Quality
- Biological Resources
- Cultural Resources
- Geology
- Hazards
- Hazardous Materials
- Hydrology and Water Quality
- Land Use and Agriculture
- Noise
- Public Services and Utilities
- Traffic and Circulation
- Environmental Justice



# Open Space Management Plan

A Plan will be produced for the entire Los Flores Ranch to manage:

- Wetlands
- Biological mitigation planting areas
- Los Flores Ranch Park uses
- Los Flores biological resources

# Environmental Controls

The Landfill will be designed and built with the following environmental controls to mitigate any impact to the environment:

- Modern liner system at bottom of waste
- Methane gas collection system for future gas to energy project
- Leachate collection system
- Ground water and gas monitoring system

# Environmental Impact Report

Certified  
April 20, 2010



# Next Steps Environmental

- Produce an Open Space Management Plan
- Submit for approval from the Army Corp of Engineers, Fish and Game, Fish and Wildlife Service and other regulatory agencies.

## Other Required Approvals

- CalRecycle/County of Santa Barbara Local Enforcement Agency
- Regional Water Quality Control Board
- Santa Barbara Air Pollution Control District

# Non Hazardous Impacted Soils (NHIS)

- The IWWMF was designed to accept NHIS the same as accepted at the Santa Maria Regional Landfill.
- City Staff anticipates only NHIS cleaned up at Los Flores to be deposited at the IWWMF due to the cost of landfill space verses the price paid to deposit NHIS.

# Waste Stream

The IWMF was designed for the waste stream to come from:

- The Santa Maria Valley Wasteshed
- Southern San Luis Obispo County
- Tajiguas Landfill

# Countywide Siting Element

- The Element is State mandated and includes all solid waste facilities in the County
- Addendum to include the IWMF at Los Flores Ranch
- Reviewed and commented on by the County Local Task Force (LTF)
- Received recommendation from the LTF on solid waste operations of the City.



# LTF Recommendations

Recommendation:

- City should implement curbside greenwaste collection program.

Response:

- City is in the process of implementing a curbside greenwaste collection program. Program to start July 2011.

# LTF Recommendations

## Recommendation:

- City should implement collection program for business-generated hazardous waste.

## Response:

- City is in the process of implementing this program. The target opening date is winter 2012.

# LTF Recommendations

## Recommendation:

- The City should monitor the feasibility of developing conversion technology, recycling and composting programs.

## Response:

- The City has already implemented many programs to reduce the waste stream into the landfill and has meet and exceeded all AB 939 recycle goals. The City has and will continue to monitor the feasibility of implementing these programs.

# Request

Adopt Resolution approving  
Addendum to Siting Element



**Questions  
or  
Comments**