

Memorandum



DATE: January 7, 2015
TO: Clerk of the Board
c/o General Services/Real Property
FROM: Scott McGolpin
Director, Public Works Department
SUBJECT: Request for Determination of Impact of
Franchise on County Roads and Right-of-Way
Pursuant to Santa Barbara County Code Section 2-82.1

=====

In accordance with Santa Barbara County Code Section 2-82.1, the County of Santa Barbara is considering granting a new private franchise to ERG Resources, LLC to replace an existing franchise allowing ERG resources, LLC, to continue to physically occupy and use certain public road right-of-way in the unincorporated areas of the County as follows:

The LOCATION of the franchise area is shown on the attached map and crossing descriptions.

The PURPOSE of this private franchise is to allow the grantee hereunder to continue to operate a pipeline system for the transportation of petroleum products within County Road Right of Way.

I have reviewed the request to determine whether the County's granting of the franchise rights contemplated will unduly impair the condition of such public places or unreasonably and unnecessarily obstruct or inconvenience the traveling public, and hereby provide the following determination:

The proposed franchise:

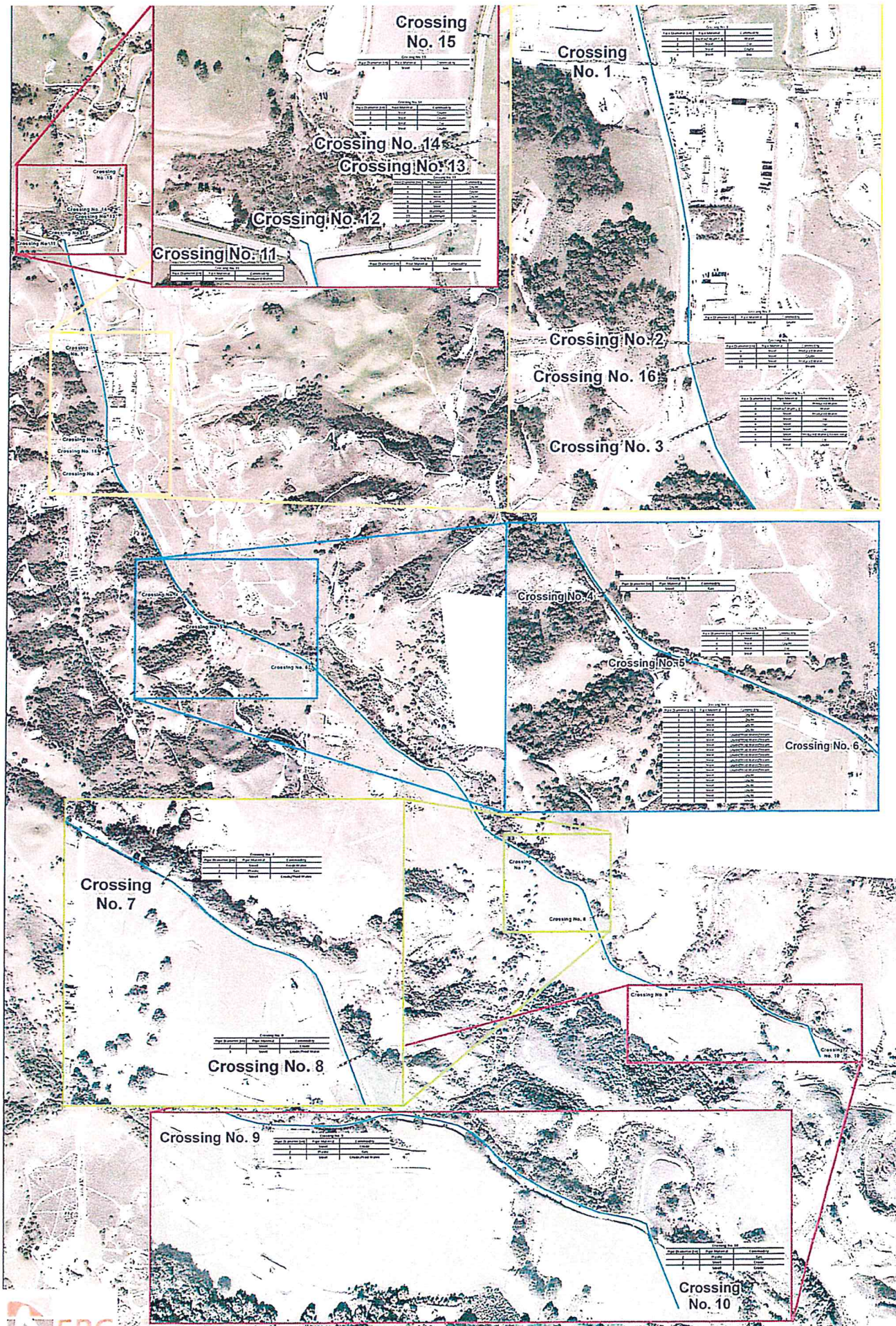
SM [] will not unduly impair or obstruct the County Road System
(initial)

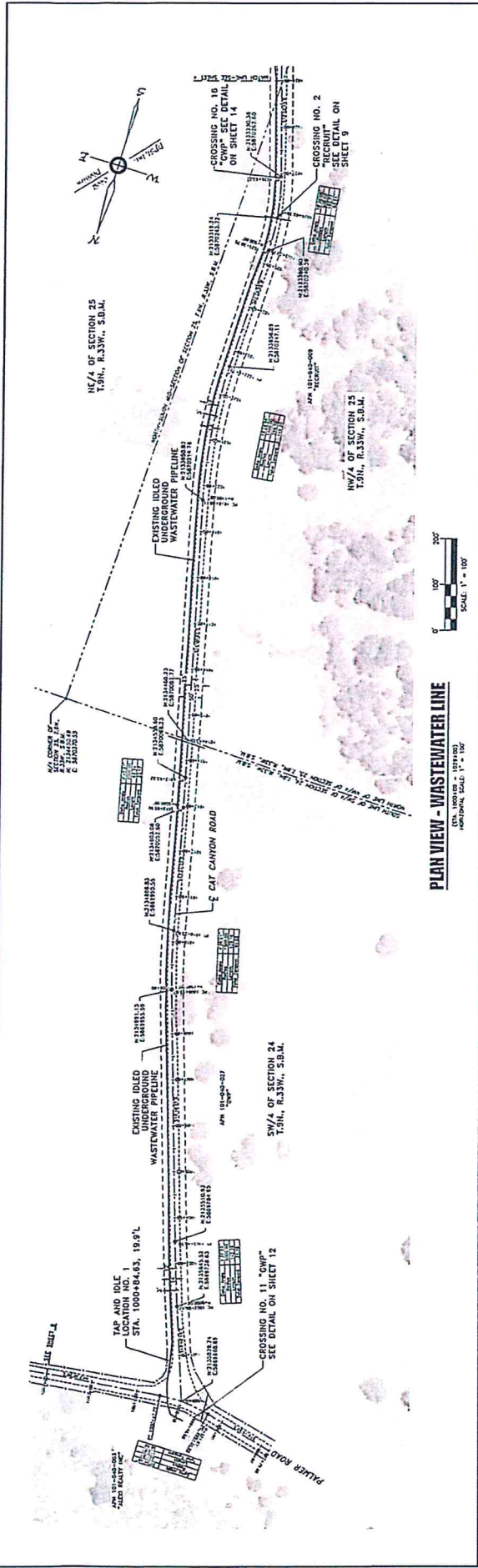
_____ [] will unduly impair or obstruct the County Road System and the
(initial) application should therefore be denied

_____ [] will unduly impair or obstruct the County Road System and the
(initial) application may be re-submitted upon the following conditions:

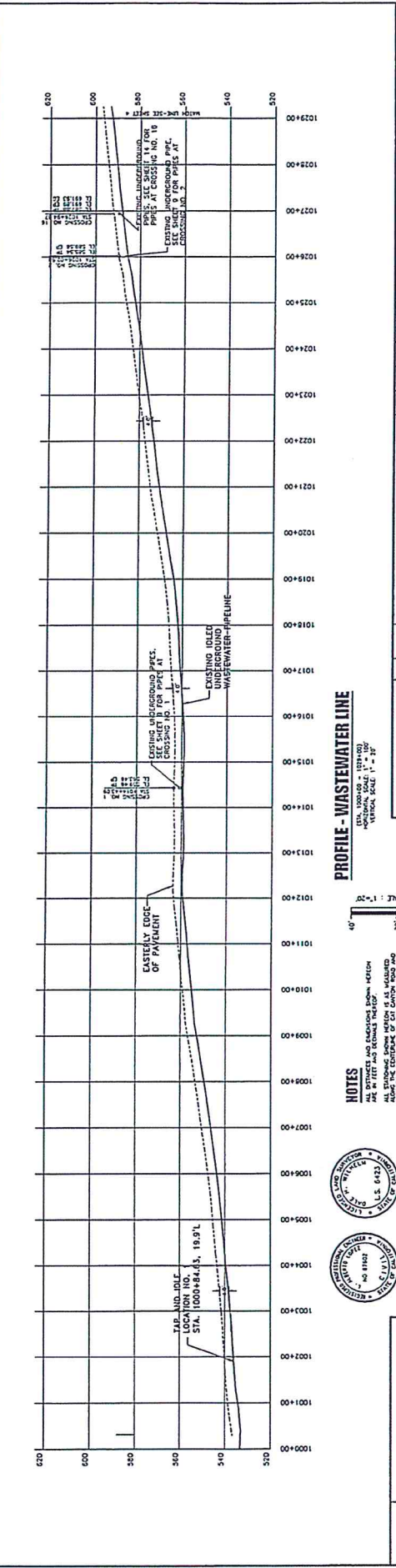
Date: 1/7/15

Scott McGolpin
Scott McGolpin
Director, Public Works
County of Santa Barbara

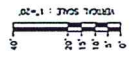




PLAN VIEW - WASTEWATER LINE
 DATE: 10/20/2013
 HORIZONTAL SCALE: 1" = 100'



PROFILE - WASTEWATER LINE
 DATE: 10/20/2013
 VERTICAL SCALE: 1" = 30'



NOTES
 ALL DIMENSIONS AND CONDITIONS SHOWN ARE TO BE FIELD AND RECONSTRUCTED.
 ALL STRUCTURES SHALL BE CONSTRUCTED IN ACCORDANCE WITH THE LATEST EDITION OF THE CALIFORNIA STANDARD SPECIFICATIONS FOR HIGHWAY AND BRIDGE CONSTRUCTION.
 A PORTION OF PLACED ROAD.



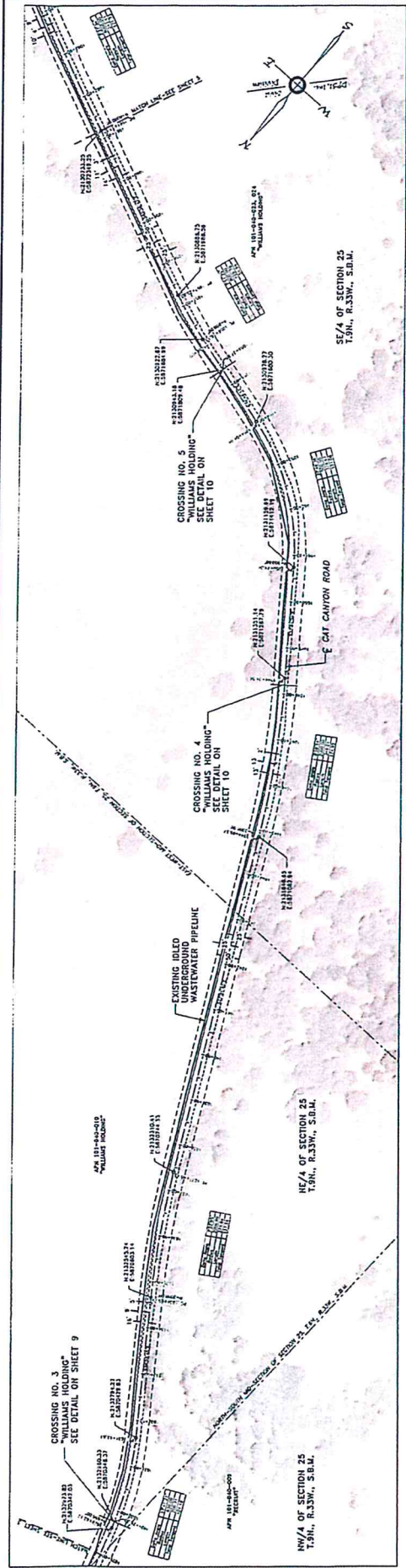
REV	DATE	DESCRIPTION	BY	CHKD.	APPRD.
0	11/28/13	PRELIMINARY/AS-BUILT PROPOSED CHANGE	CS	AL	AL
1	11/29/13	SENT TO E.O. OFFICE FOR REVIEW	CS	AL	AL
2	12/13/13	ISSUE ISSUED FOR REVIEW	CS	AL	AL
3	12/13/13	ISSUE ISSUED FOR REVIEW	CS	AL	AL
4	10/23/13	AS-BUILT - ASSESSED/IDLED WASTE WATER	AM	AL	AL

ERG RESOURCES, LLC
 ENGINEERING SERVICES
 INTERNATIONAL
 541 LAVA CROSS CA
 (951) 750-1751
 www.ergresources.com

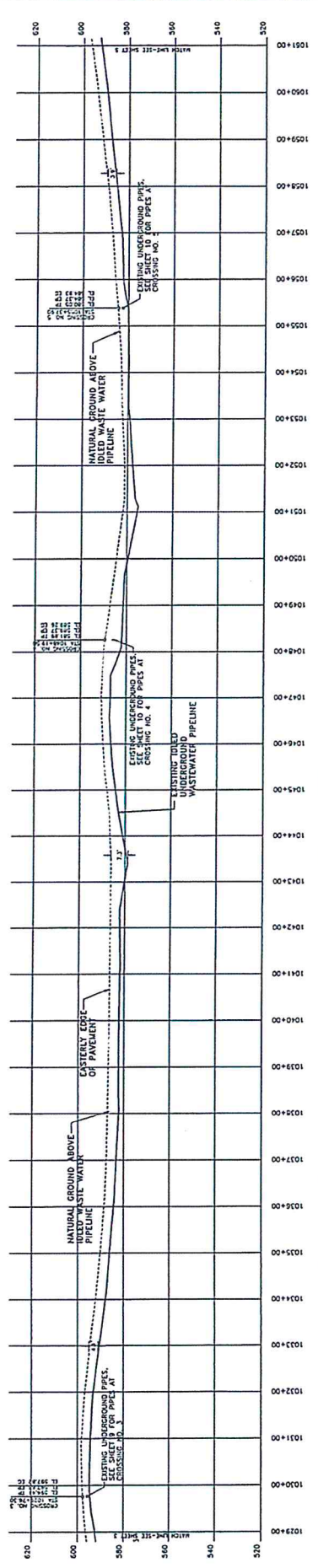
PROJECT: 618888

DATE	NO.	REV.
10/21/2013	3	OF 14
10/21/2013	4	OF 14

CS-10003	CS-10003-CAT CANTON AERIAL IMAGE
CS-10004	CS-10004-CAT CANTON AERIAL IMAGE
CS-10005	CS-10005-CAT CANTON AERIAL IMAGE
CS-10006	CS-10006-CAT CANTON AERIAL IMAGE
CS-10007	CS-10007-CAT CANTON AERIAL IMAGE
CS-10008	CS-10008-CAT CANTON AERIAL IMAGE
CS-10009	CS-10009-CAT CANTON AERIAL IMAGE
CS-10010	CS-10010-CAT CANTON AERIAL IMAGE
CS-10011	CS-10011-CAT CANTON AERIAL IMAGE
CS-10012	CS-10012-CAT CANTON AERIAL IMAGE
CS-10013	CS-10013-CAT CANTON AERIAL IMAGE
CS-10014	CS-10014-CAT CANTON AERIAL IMAGE
CS-10015	CS-10015-CAT CANTON AERIAL IMAGE
CS-10016	CS-10016-CAT CANTON AERIAL IMAGE
CS-10017	CS-10017-CAT CANTON AERIAL IMAGE
CS-10018	CS-10018-CAT CANTON AERIAL IMAGE
CS-10019	CS-10019-CAT CANTON AERIAL IMAGE
CS-10020	CS-10020-CAT CANTON AERIAL IMAGE
CS-10021	CS-10021-CAT CANTON AERIAL IMAGE
CS-10022	CS-10022-CAT CANTON AERIAL IMAGE
CS-10023	CS-10023-CAT CANTON AERIAL IMAGE
CS-10024	CS-10024-CAT CANTON AERIAL IMAGE
CS-10025	CS-10025-CAT CANTON AERIAL IMAGE
CS-10026	CS-10026-CAT CANTON AERIAL IMAGE
CS-10027	CS-10027-CAT CANTON AERIAL IMAGE
CS-10028	CS-10028-CAT CANTON AERIAL IMAGE
CS-10029	CS-10029-CAT CANTON AERIAL IMAGE
CS-10030	CS-10030-CAT CANTON AERIAL IMAGE
CS-10031	CS-10031-CAT CANTON AERIAL IMAGE
CS-10032	CS-10032-CAT CANTON AERIAL IMAGE
CS-10033	CS-10033-CAT CANTON AERIAL IMAGE
CS-10034	CS-10034-CAT CANTON AERIAL IMAGE
CS-10035	CS-10035-CAT CANTON AERIAL IMAGE
CS-10036	CS-10036-CAT CANTON AERIAL IMAGE
CS-10037	CS-10037-CAT CANTON AERIAL IMAGE
CS-10038	CS-10038-CAT CANTON AERIAL IMAGE
CS-10039	CS-10039-CAT CANTON AERIAL IMAGE
CS-10040	CS-10040-CAT CANTON AERIAL IMAGE
CS-10041	CS-10041-CAT CANTON AERIAL IMAGE
CS-10042	CS-10042-CAT CANTON AERIAL IMAGE
CS-10043	CS-10043-CAT CANTON AERIAL IMAGE
CS-10044	CS-10044-CAT CANTON AERIAL IMAGE
CS-10045	CS-10045-CAT CANTON AERIAL IMAGE
CS-10046	CS-10046-CAT CANTON AERIAL IMAGE
CS-10047	CS-10047-CAT CANTON AERIAL IMAGE
CS-10048	CS-10048-CAT CANTON AERIAL IMAGE
CS-10049	CS-10049-CAT CANTON AERIAL IMAGE
CS-10050	CS-10050-CAT CANTON AERIAL IMAGE
CS-10051	CS-10051-CAT CANTON AERIAL IMAGE
CS-10052	CS-10052-CAT CANTON AERIAL IMAGE
CS-10053	CS-10053-CAT CANTON AERIAL IMAGE
CS-10054	CS-10054-CAT CANTON AERIAL IMAGE
CS-10055	CS-10055-CAT CANTON AERIAL IMAGE
CS-10056	CS-10056-CAT CANTON AERIAL IMAGE
CS-10057	CS-10057-CAT CANTON AERIAL IMAGE
CS-10058	CS-10058-CAT CANTON AERIAL IMAGE
CS-10059	CS-10059-CAT CANTON AERIAL IMAGE
CS-10060	CS-10060-CAT CANTON AERIAL IMAGE
CS-10061	CS-10061-CAT CANTON AERIAL IMAGE
CS-10062	CS-10062-CAT CANTON AERIAL IMAGE
CS-10063	CS-10063-CAT CANTON AERIAL IMAGE
CS-10064	CS-10064-CAT CANTON AERIAL IMAGE
CS-10065	CS-10065-CAT CANTON AERIAL IMAGE
CS-10066	CS-10066-CAT CANTON AERIAL IMAGE
CS-10067	CS-10067-CAT CANTON AERIAL IMAGE
CS-10068	CS-10068-CAT CANTON AERIAL IMAGE
CS-10069	CS-10069-CAT CANTON AERIAL IMAGE
CS-10070	CS-10070-CAT CANTON AERIAL IMAGE
CS-10071	CS-10071-CAT CANTON AERIAL IMAGE
CS-10072	CS-10072-CAT CANTON AERIAL IMAGE
CS-10073	CS-10073-CAT CANTON AERIAL IMAGE
CS-10074	CS-10074-CAT CANTON AERIAL IMAGE
CS-10075	CS-10075-CAT CANTON AERIAL IMAGE
CS-10076	CS-10076-CAT CANTON AERIAL IMAGE
CS-10077	CS-10077-CAT CANTON AERIAL IMAGE
CS-10078	CS-10078-CAT CANTON AERIAL IMAGE
CS-10079	CS-10079-CAT CANTON AERIAL IMAGE
CS-10080	CS-10080-CAT CANTON AERIAL IMAGE
CS-10081	CS-10081-CAT CANTON AERIAL IMAGE
CS-10082	CS-10082-CAT CANTON AERIAL IMAGE
CS-10083	CS-10083-CAT CANTON AERIAL IMAGE
CS-10084	CS-10084-CAT CANTON AERIAL IMAGE
CS-10085	CS-10085-CAT CANTON AERIAL IMAGE
CS-10086	CS-10086-CAT CANTON AERIAL IMAGE
CS-10087	CS-10087-CAT CANTON AERIAL IMAGE
CS-10088	CS-10088-CAT CANTON AERIAL IMAGE
CS-10089	CS-10089-CAT CANTON AERIAL IMAGE
CS-10090	CS-10090-CAT CANTON AERIAL IMAGE
CS-10091	CS-10091-CAT CANTON AERIAL IMAGE
CS-10092	CS-10092-CAT CANTON AERIAL IMAGE
CS-10093	CS-10093-CAT CANTON AERIAL IMAGE
CS-10094	CS-10094-CAT CANTON AERIAL IMAGE
CS-10095	CS-10095-CAT CANTON AERIAL IMAGE
CS-10096	CS-10096-CAT CANTON AERIAL IMAGE
CS-10097	CS-10097-CAT CANTON AERIAL IMAGE
CS-10098	CS-10098-CAT CANTON AERIAL IMAGE
CS-10099	CS-10099-CAT CANTON AERIAL IMAGE
CS-10100	CS-10100-CAT CANTON AERIAL IMAGE

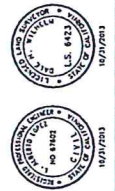


PLAN VIEW - WASTEWATER LINE
 (SHEET NO. 10 OF 10)
 HORIZONTAL SCALE: 1" = 100'



PROFILE - WASTEWATER LINE
 (SHEET NO. 10 OF 10)
 VERTICAL SCALE: 1" = 20'

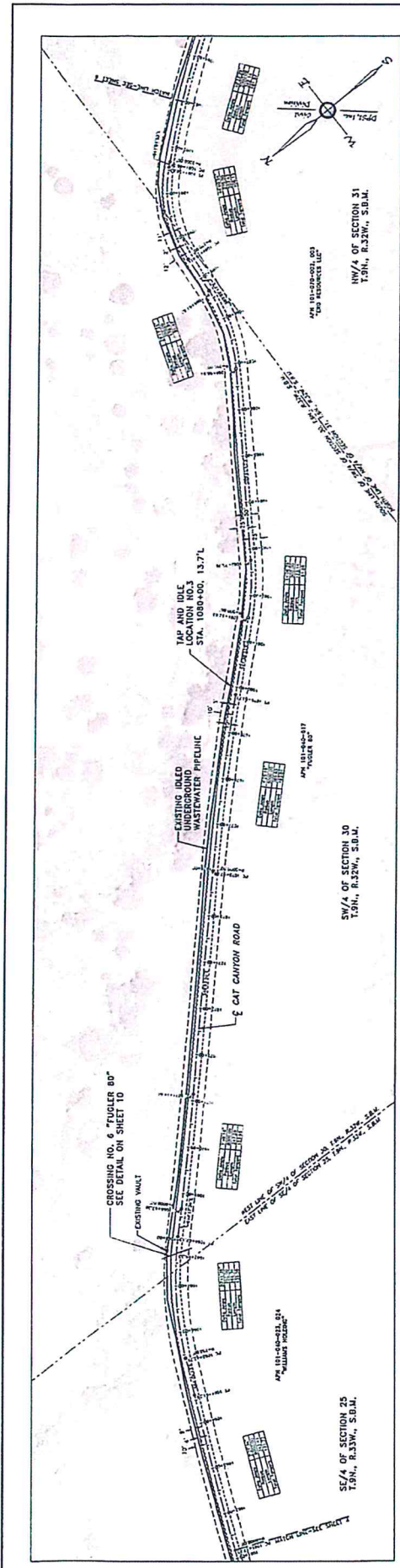
NOTES
 ALL DIMENSIONS ARE IN FEET AND DECIMALS THEREOF.
 ALL DIMENSIONS ARE TO CENTER UNLESS OTHERWISE NOTED.
 ALL DIMENSIONS ARE TO CENTER UNLESS OTHERWISE NOTED.



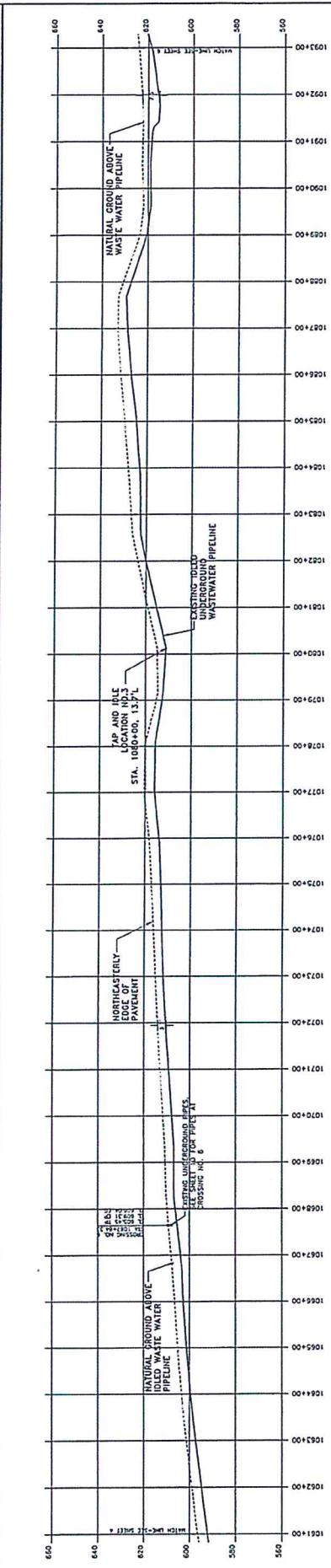
REV	DATE	DESCRIPTION	BY	CHKD.	APPR.
0	11.28.13	PRELIMINARY/CONCEPT PROPOSAL ONLY	SC	AL	AL
1	11.28.13	FINAL DESIGN FOR NEW 3.0' DIA. UNDERGROUND PIPE	SC	AL	AL
2	11.28.13	DESIGN FOR NEW 3.0' DIA. UNDERGROUND PIPE	SC	AL	AL
3	11.28.13	DESIGN FOR NEW 3.0' DIA. UNDERGROUND PIPE	SC	AL	AL
4	10.31.13	AS-BUILT - ASSESS EXISTING WASTE WATER PIPE	AM	AL	AL

PROJECT: G120878
 ENGINEER: ERG RESOURCES, INC.
 INTERNATIONAL SERVICES
 SAN LUIS OBISPO, CA
 (805) 250-2501
 www.erginc.com

CD	NO	DESCRIPTION
05-10003	05-10003	CAT CANYON AERIAL IMAGE
05-10004	05-10004	PLAN AND PROFILES
05-10005	05-10005	CAT CANYON ROAD BASE MAP



PLAN VIEW - WASTEWATER LINE
 DAT: 10/11/00 - 10/11/00
 HORIZONTAL SCALE: 1" = 100'



PROFILE - WASTEWATER LINE
 DAT: 10/11/00 - 10/11/00
 VERTICAL SCALE: 1" = 30'



NOTES
 ALL DIMENSIONS AND ELEVATIONS SHOWN HEREON
 ARE TO FACE UNLESS OTHERWISE NOTED
 ALL ELEVATIONS SHOWN HEREON IS AS SHOWN
 ALONG THE CENTERLINE OF CAT CANYON ROAD



REV	DATE	DESCRIPTION	BY	CHKD.	APPR.
0	11/15/13	PRELIMINARY/CONCEPT PROPOSED DESIGN	GC	AL	AL
1	11/20/13	SENT TO SLO OFFICE FOR REVIEW	GC	AL	AL
2	11/13/13	ISSUED FOR REVIEW OF SLO OFFICE TO B	GC	AL	AL
3	11/13/13	ISSUED FOR REVIEW OF SLO OFFICE TO B	GC	AL	AL
4	10/31/13	ISSUED - ASSESS IDLED WASTE WATER LINE	JM	AL	AL

ERG
 ENGINEERING & RESOURCE GROUPS
 INTERNATIONAL
 5410 OLIVE CA
 (909) 250-2771
 www.erginc.com

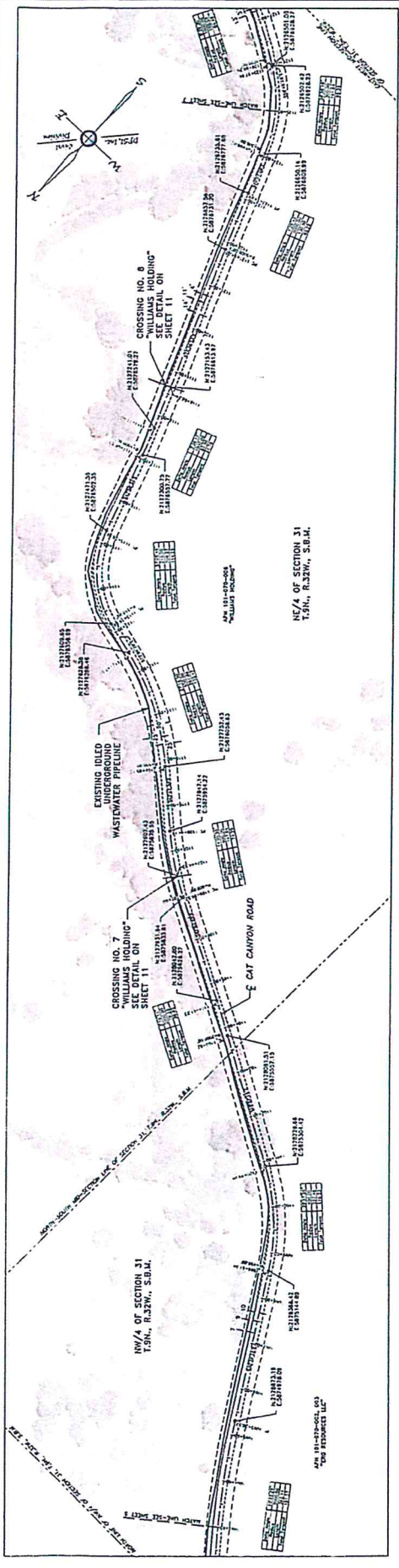
PROJECT: 6120838

NO. 5 OF 14
 SHEET NO. 5 OF 14
 DRAWING NO. 5 OF 14
 DATE: 11/17/2013
 SCALE: 1" = 100'

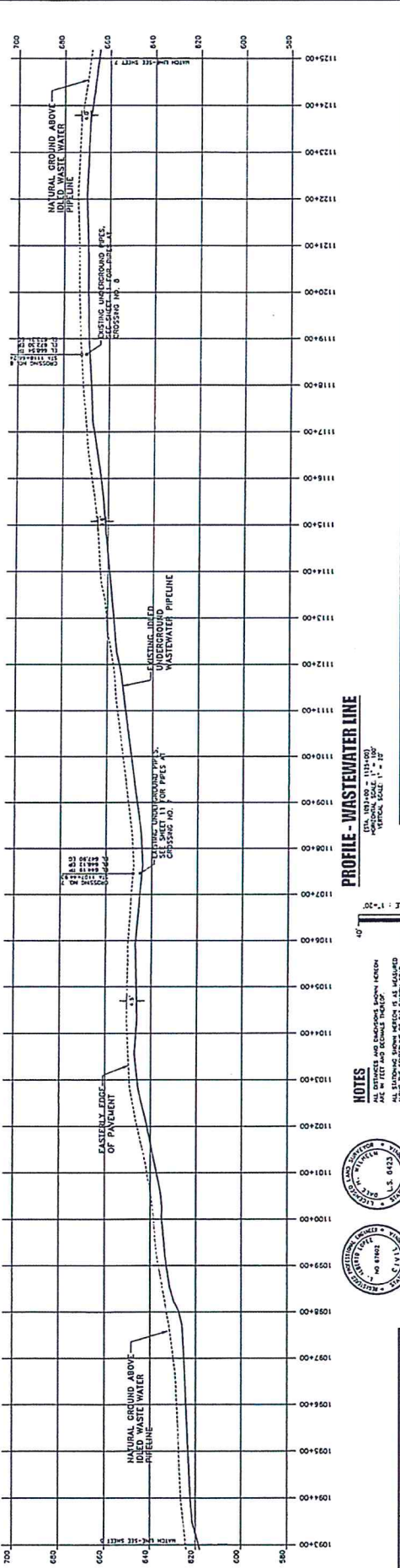
ENGINEER: ALBERTO LOPEZ
 CHECKED: ALBERTO LOPEZ
 DESIGNED: ALBERTO LOPEZ
 DRAWN: ALBERTO LOPEZ
 COMPILED BY: GLENN DANIELSON
 DOCUMENT TYPE: TOPD SURVEY
 CAD FILE NO.: 01000382.DWG

ERG ERG Resources, LLC

05-NA003 CAT CANYON AERIAL IMAGE
 010003820 PLAN AND PROFILES
 010003820 CAT CANYON ROAD BASE MAP
 REFERENCE DRAWINGS

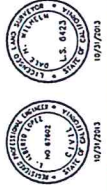


PLAN VIEW - WASTEWATER LINE
 HORIZONTAL SCALE: 1" = 100'
 VERTICAL SCALE: 1" = 100'



PROFILE - WASTEWATER LINE
 HORIZONTAL SCALE: 1" = 100'
 VERTICAL SCALE: 1" = 10'

NOTES
 ALL ELEVATIONS SHOWN HEREON IS AS MEASURED ALONG THE CENTERLINE OF CAT CANYON ROAD



REV	DATE	DESCRIPTION	BY	CHK	APPR
0	11.28.13	PRELIMINARY WORK-IN-PROGRESS DWGS	CC	AL	AL
1	11.28.13	REVISED FOR REVIEW	CC	AL	AL
2	11.28.13	REVISED CROSSING 8 & ROAD CROSSING 19	FEH	AL	AL
3	11.28.13	REVISED CROSSING 8 & ROAD CROSSING 19	FEH	AL	AL
4	11.28.13	REVISED CROSSING 8 & ROAD CROSSING 19	ZAR	AL	AL

PROJECT: 6120828
DATE: 11/14/2013
SCALE: 1" = 100'
NO. 6 OF 14
REV. 4
PROJECT: 6120828
DATE: 11/14/2013
SCALE: 1" = 100'
NO. 6 OF 14
REV. 4

ERG Resources, LLC

10000 S. GARDEN AVENUE, SUITE 100, GARDEN CITY, CA 92345
 (951) 255-3301
 www.erginc.com

PROJECT: 6120828

DATE: 11/14/2013

SCALE: 1" = 100'

NO. 6 OF 14

REV. 4

PROJECT: 6120828

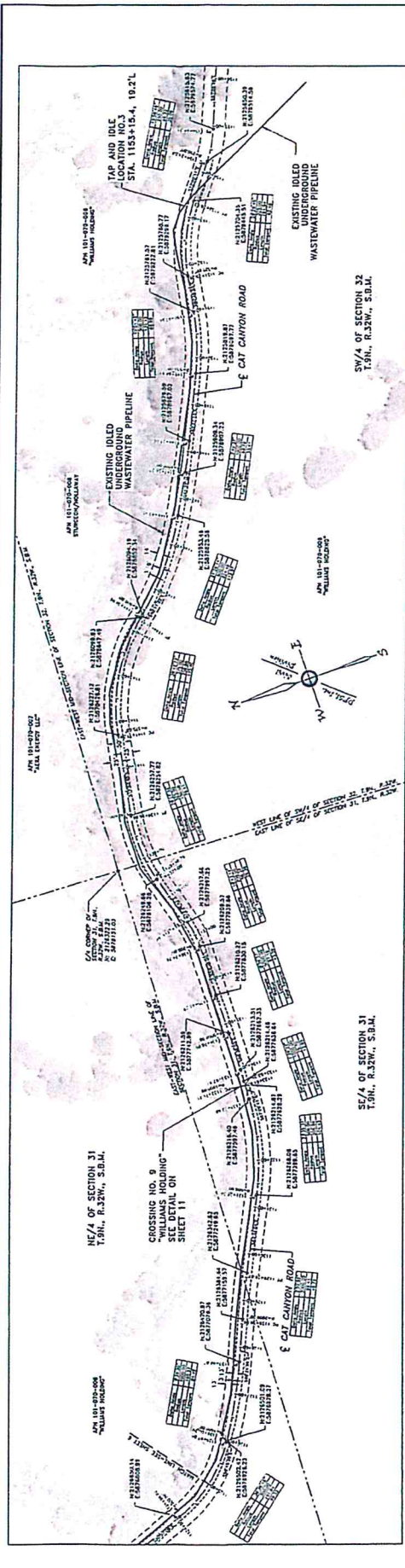
DATE: 11/14/2013

SCALE: 1" = 100'

NO. 6 OF 14

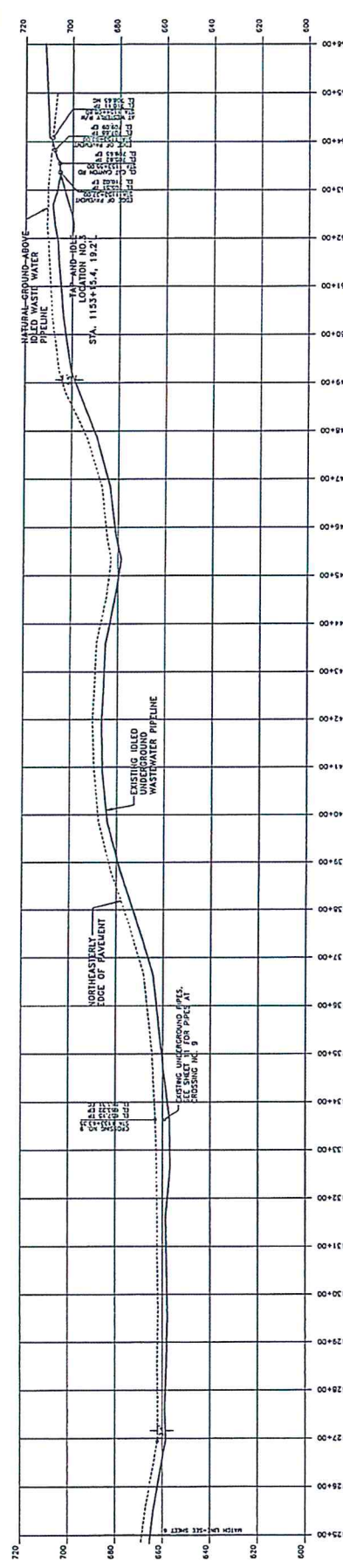
REV. 4

GS-04033	GS-04033-CAT CANYON AERIAL W/ICE
G1002760	PLANT AND DRAIAGES
G1002760	CAT CANYON ROAD BASE MAP
G1002760	REFERENCE DRAWINGS



PLAN VIEW - WASTEWATER LINE

TOTAL: 1332.00' 1" = 100'
HORIZONTAL SCALE: 1" = 100'



PROFILE - WASTEWATER LINE

TOTAL: 1332.00' 1" = 100'
VERTICAL SCALE: 1" = 20'

REV	DATE	DESCRIPTION	BY	CHKD.	APP'D.
1	11/13/12	ISSUE FOR PERMITS	AL	AL	
2	11/13/12	ISSUE FOR REVIEW	OS	AL	
3	10/31/13	ISSUE FOR IDELED WASTE WATER PERMIT	AL	AL	

NOTES

1. ALL UTILITY LOCATIONS SHOWN ARE APPROXIMATE AND SHOULD BE VERIFIED BY FIELD SURVEY.

10/27/2013

10/27/2013

DESIGNED BY	CHKD. BY	APP'D. BY
DATE OF DESIGN	DATE OF CHECK	DATE OF APPROVAL
PROJECT: G1203828		

DATE	DESCRIPTION	BY	CHKD.	APP'D.
11/13/12	ISSUE FOR PERMITS	AL	AL	
11/13/12	ISSUE FOR REVIEW	OS	AL	
10/31/13	ISSUE FOR IDELED WASTE WATER PERMIT	AL	AL	

DRIVER ASSISTANCE SERVICES
848 LUMA DRIVE CA
SANTA LUISA COUNTY CA
(805) 252-2991
www.dascs.com

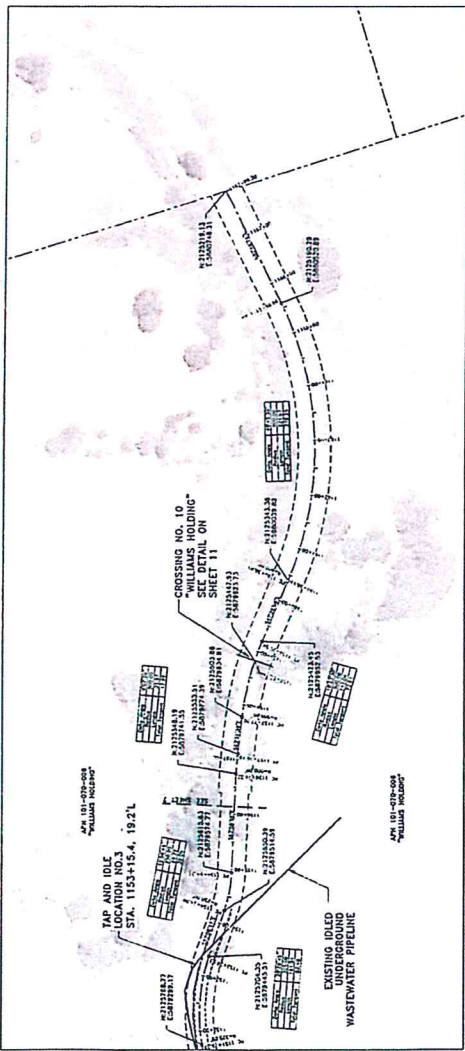
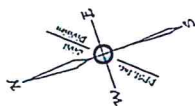
PROJECT: G1203828
DOCUMENT TYPE: TPO SURVEY
JOB FILE NO. G1203828 4

ERG ERG Resources, LLC
10/27/2013
10/27/2013

G1203828	G1-NW32-CAT CANYON AERIAL WASTE PLAN AND PROFILES	
G1203828	G1-NW32-CAT CANYON ROAD BASE MAP	

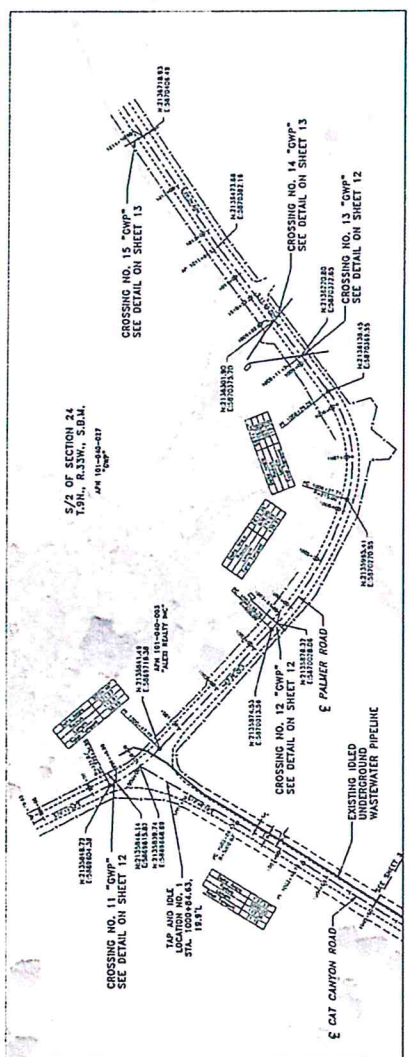
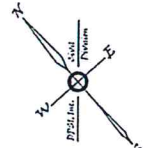
DRIVER ASSISTANCE SERVICES
848 LUMA DRIVE CA
SANTA LUISA COUNTY CA
(805) 252-2991
www.dascs.com

PROJECT: G1203828
DOCUMENT TYPE: TPO SURVEY
JOB FILE NO. G1203828 4



NOTES
 ALL STRUCTURES AND STRUCTURES SHOWN HEREON
 ARE IN FEET AND DECIMALS THEREOF.
 ALL DIMENSIONS ARE TO THE CENTERLINE OF CAT CANYON ROAD

PLAN VIEW - WASTEWATER LINE
 STA. 1133+00.00 - 1133+85.00
 HORIZONTAL SCALE: 1" = 100'



NOTES
 ALL STRUCTURES AND STRUCTURES SHOWN HEREON
 ARE IN FEET AND DECIMALS THEREOF.
 ALL DIMENSIONS ARE TO THE CENTERLINE OF CAT CANYON ROAD

PLAN VIEW - PALMER ROAD
 STA. 1133+00.00 - 1133+10.00
 HORIZONTAL SCALE: 1" = 100'

REV	DATE	DESCRIPTION
0	11.28.12	PRELIMINARY/CONCEPT PROPOSED DMS
1	12.13.12	REVISED CROSSING 9 & 10 AND CROSSING 18
2	12.13.12	REVISED CROSSING 9 & 10 AND CROSSING 18
3	12.13.12	REVISED CROSSING 9 & 10 AND CROSSING 18
4	12.13.12	REVISED CROSSING 9 & 10 AND CROSSING 18

DR	CD	APPRO
GC	AL	AL
ES	AL	AL
FGH	AL	AL
AM	AL	AL

ERG ENGINEERING & RECONSTRUCTION, LLC
 10015 S. 25th Ave., Suite 100, Phoenix, AZ 85048
 (602) 998-2525
 www.ergaz.com

PROJECT: G120828

REV	DATE	DESCRIPTION
0	11.28.12	PRELIMINARY/CONCEPT PROPOSED DMS
1	12.13.12	REVISED CROSSING 9 & 10 AND CROSSING 18
2	12.13.12	REVISED CROSSING 9 & 10 AND CROSSING 18
3	12.13.12	REVISED CROSSING 9 & 10 AND CROSSING 18
4	12.13.12	REVISED CROSSING 9 & 10 AND CROSSING 18

CD	APPRO
GC	AL
ES	AL
FGH	AL
AM	AL

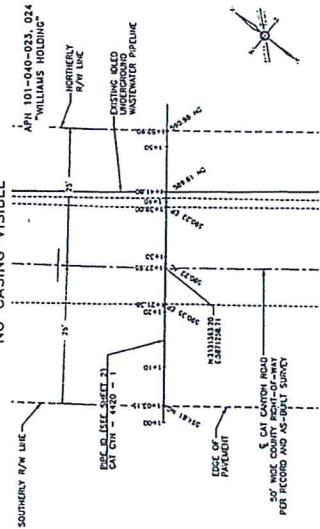
REV	DATE	DESCRIPTION
0	11.28.12	PRELIMINARY/CONCEPT PROPOSED DMS
1	12.13.12	REVISED CROSSING 9 & 10 AND CROSSING 18
2	12.13.12	REVISED CROSSING 9 & 10 AND CROSSING 18
3	12.13.12	REVISED CROSSING 9 & 10 AND CROSSING 18
4	12.13.12	REVISED CROSSING 9 & 10 AND CROSSING 18

CD	APPRO
GC	AL
ES	AL
FGH	AL
AM	AL

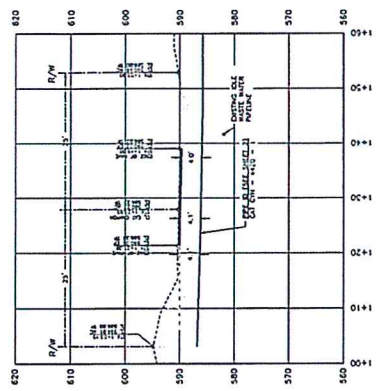
REV	DATE	DESCRIPTION
0	11.28.12	PRELIMINARY/CONCEPT PROPOSED DMS
1	12.13.12	REVISED CROSSING 9 & 10 AND CROSSING 18
2	12.13.12	REVISED CROSSING 9 & 10 AND CROSSING 18
3	12.13.12	REVISED CROSSING 9 & 10 AND CROSSING 18
4	12.13.12	REVISED CROSSING 9 & 10 AND CROSSING 18

CROSSING NO. 4

APN 101-040-023, 024
"WILLIAMS HOLDING
COMPANY"
NO CASING VISIBLE



PLAN
HORIZONTAL: 1"=10'



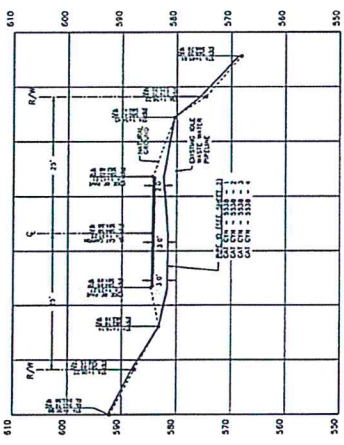
PROFILE
VERTICAL: 1"=10'
HORIZONTAL: 1"=10'

CROSSING NO. 5

APN 101-040-023, 024
"WILLIAMS HOLDING
COMPANY"
24" CMP CASING



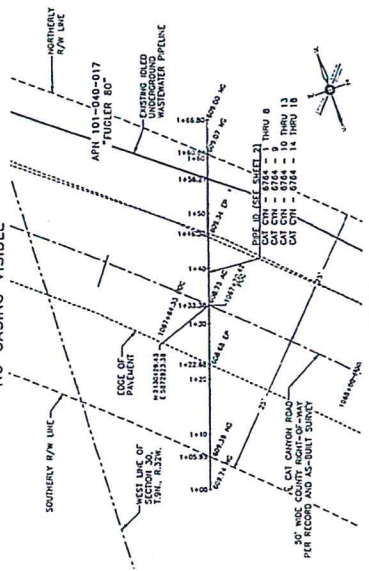
PLAN
HORIZONTAL: 1"=10'



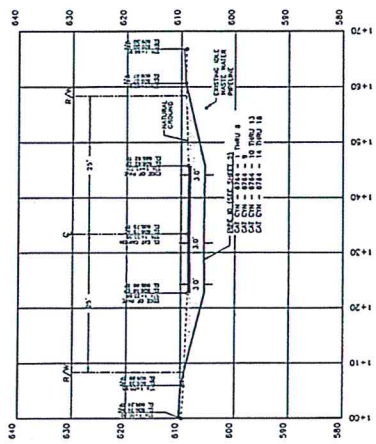
PROFILE
VERTICAL: 1"=10'
HORIZONTAL: 1"=10'

CROSSING NO. 6

APN 101-040-017
"FUGLER 80"
NO CASING VISIBLE



PLAN
HORIZONTAL: 1"=10'



PROFILE
VERTICAL: 1"=10'
HORIZONTAL: 1"=10'

REV	DATE	DESCRIPTION	BY	CHK	APPR
0	11/20/23	PRELIMINARY/WORK-IN PROGRESS DWG'S	GC	AL	AL
1	11/23/23	FINAL/ISSUED FOR PERMIT	GC	AL	AL
2	10/28/23	ISSUED FOR PERMIT	GC	AL	AL
3	10/28/23	ISSUED FOR PERMIT	GC	AL	AL
4	11/23/23	ISSUED FOR PERMIT	GC	AL	AL

<p>DIVERSIFIED PROJECT SERVICES, Inc. 3844 Hill Country, CA (951) 255-3881 www.dpsinc.com</p>	<p>PROJECT: G120828</p>
---	-------------------------

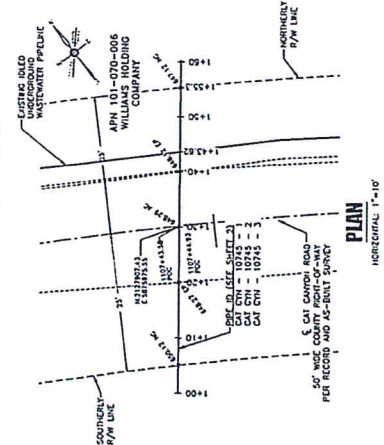
<p>OLD WASTE WATER LINE - ASBESTOS - CAT CANYON ROAD PORTLAND PIPE - ERGO RESOURCES, LLC PORTLAND PIPE - ERGO RESOURCES, LLC PORTLAND PIPE - ERGO RESOURCES, LLC PORTLAND PIPE - ERGO RESOURCES, LLC</p>	<p>DATE: 11/23/2013 SCALE: 1" = 100'</p>
<p>ENGINEER: AMERICO LOPEZ DATE: 11/23/2013 ORIGINAL DWG NO.</p>	<p>NO. 10 OF 14 REV.</p>
<p>COMPILED BY: GUY CANTERBURY</p>	<p>CAD FILE NO. G120828D04</p>

<p>CG-14003 G120828P01 G120828B00</p>	<p>CG-14003-CAT CANYON AERIAL IMAGE PLANT AND PROFILES CAT CANYON ROAD BACK VIEW</p>
---	--

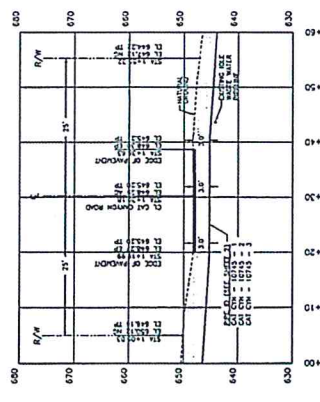
ERG Resources, Inc.

CROSSING NO. 7

APN 101-070-006
 "WILLIAMS HOLDING COMPANY"
 9" STL CASING VISIBLE



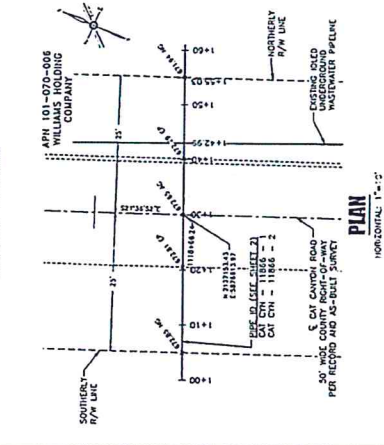
PLAN
 HORIZONTAL: 1"=10'



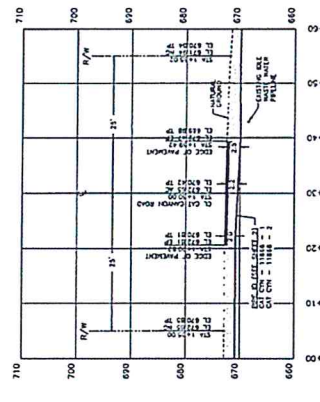
PROFILE
 VERTICAL: 1"=10'
 HORIZONTAL: 1"=10'

CROSSING NO. 8

APN 101-070-006
 "WILLIAMS HOLDING COMPANY"
 CASING VISIBLE



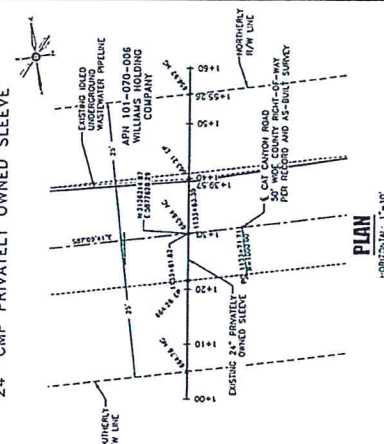
PLAN
 HORIZONTAL: 1"=10'



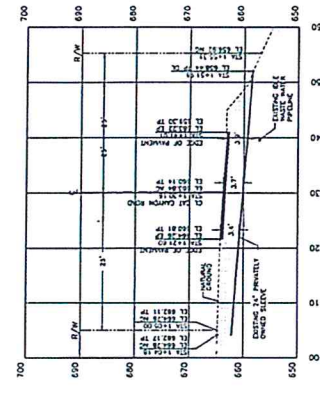
PROFILE
 VERTICAL: 1"=10'
 HORIZONTAL: 1"=10'

CROSSING NO. 9

APN 101-070-006
 "WILLIAMS HOLDING COMPANY"
 24" CMP PRIVATELY OWNED SLEEVE



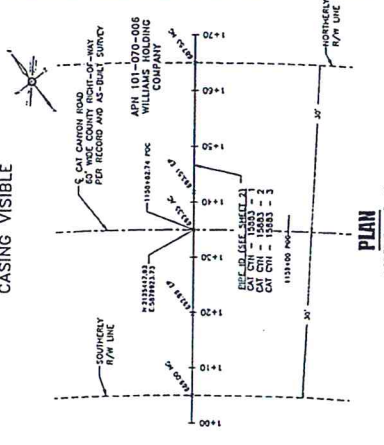
PLAN
 HORIZONTAL: 1"=10'



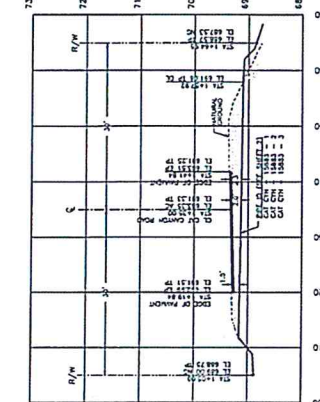
PROFILE
 VERTICAL: 1"=10'
 HORIZONTAL: 1"=10'

CROSSING NO. 10

APN 101-070-006
 "WILLIAMS HOLDING COMPANY"
 CASING VISIBLE



PLAN
 HORIZONTAL: 1"=10'



PROFILE
 VERTICAL: 1"=10'
 HORIZONTAL: 1"=10'

REV	DATE	DESCRIPTION	BY	CHKD.	APPR.
0	11.28.12	PRELIMINARY WORKING DRAWING	GC	AL	AL
1	11.28.12	REVISED FOR REVIEW	GC	AL	AL
2	11.28.12	ADJUSTED CROSSING TO ROAD CENTERLINE	GC	AL	AL
3	11.28.12	ADJUSTED CROSSING TO ROAD CENTERLINE	GC	AL	AL
4	11.28.12	ADJUSTED CROSSING TO ROAD CENTERLINE	GC	AL	AL

ENGINEER:	DALE H. WILHELM	DATE:	11/27/2013
SURVEYOR:	DALE H. WILHELM	ORIGINAL DWG. NO.:	100
SCALE:	AS SHOWN	AS-BUILT DWG. NO.:	100
PROJECT:	G120828		
NO.:	11 OF 14		
REV.:	4		

PROJECT:	ICELED WASTE WATER LINE - WILHELM, TAYLOR & CAT CANYON ROAD
OWNER:	WILLIAMS HOLDING COMPANY
DESIGNER:	DALE H. WILHELM
DRAWN BY:	DALE H. WILHELM
CHECKED BY:	DALE H. WILHELM
DATE:	11/27/2013
DWG. NO.:	100
AS-BUILT DWG. NO.:	100
SCALE:	AS SHOWN
PROJECT:	G120828
NO.:	11 OF 14
REV.:	4

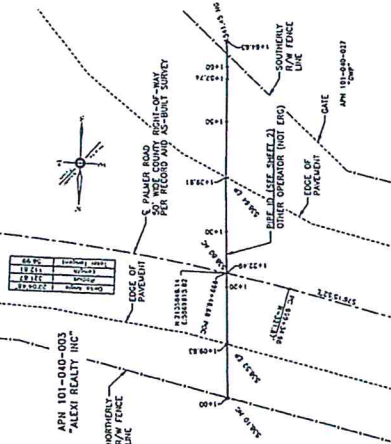
PROJECT:	ICELED WASTE WATER LINE - WILHELM, TAYLOR & CAT CANYON ROAD
OWNER:	WILLIAMS HOLDING COMPANY
DESIGNER:	DALE H. WILHELM
DRAWN BY:	DALE H. WILHELM
CHECKED BY:	DALE H. WILHELM
DATE:	11/27/2013
DWG. NO.:	100
AS-BUILT DWG. NO.:	100
SCALE:	AS SHOWN
PROJECT:	G120828
NO.:	11 OF 14
REV.:	4

PROJECT:	ICELED WASTE WATER LINE - WILHELM, TAYLOR & CAT CANYON ROAD
OWNER:	WILLIAMS HOLDING COMPANY
DESIGNER:	DALE H. WILHELM
DRAWN BY:	DALE H. WILHELM
CHECKED BY:	DALE H. WILHELM
DATE:	11/27/2013
DWG. NO.:	100
AS-BUILT DWG. NO.:	100
SCALE:	AS SHOWN
PROJECT:	G120828
NO.:	11 OF 14
REV.:	4

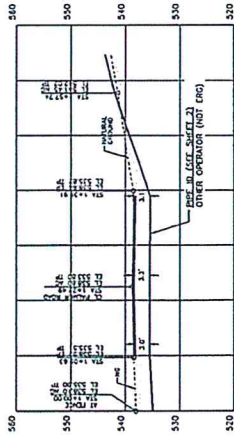
PROJECT:	ICELED WASTE WATER LINE - WILHELM, TAYLOR & CAT CANYON ROAD
OWNER:	WILLIAMS HOLDING COMPANY
DESIGNER:	DALE H. WILHELM
DRAWN BY:	DALE H. WILHELM
CHECKED BY:	DALE H. WILHELM
DATE:	11/27/2013
DWG. NO.:	100
AS-BUILT DWG. NO.:	100
SCALE:	AS SHOWN
PROJECT:	G120828
NO.:	11 OF 14
REV.:	4

CROSSING NO. 11

APN 101-040-027
"GWP"
NO CASING VISIBLE



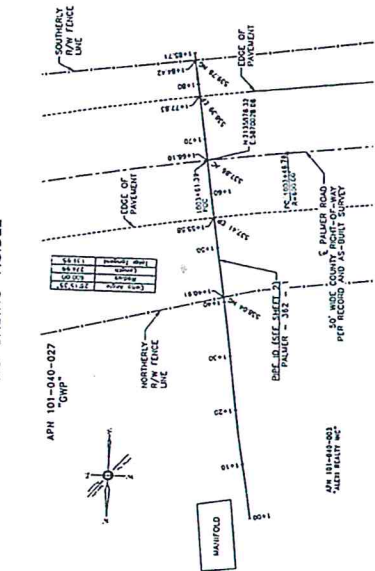
PLAN
HORIZONTAL: 1"=10'



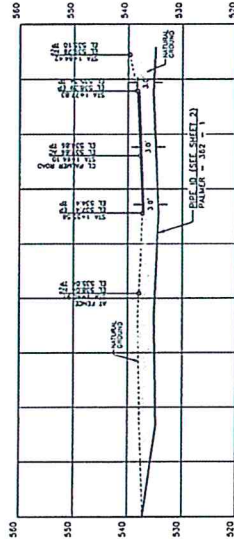
PROFILE
VERTICAL: 1"=1'
HORIZONTAL: 1"=10'

CROSSING NO. 12

APN 101-040-027
"GWP"
NO CASING VISIBLE



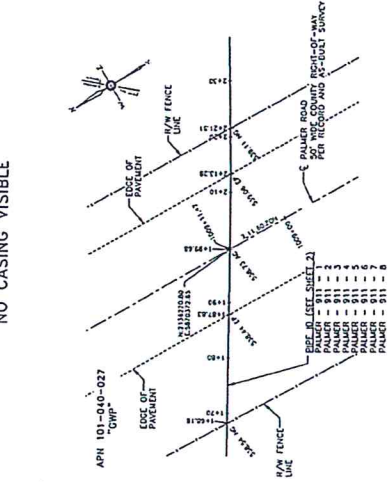
PLAN
HORIZONTAL: 1"=10'



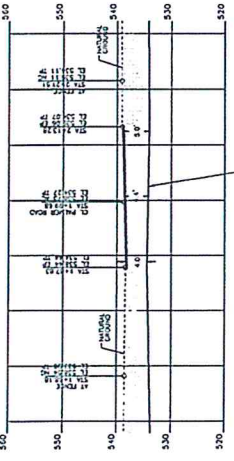
PROFILE
VERTICAL: 1"=1'
HORIZONTAL: 1"=10'

CROSSING NO. 13

APN 101-040-027
"GWP"
NO CASING VISIBLE



PLAN
HORIZONTAL: 1"=10'



PROFILE
VERTICAL: 1"=1'
HORIZONTAL: 1"=10'

REV	DATE	DESCRIPTION
0	11/28/13	PRELIMINARY/WORK-IN PROGRESS DINGS
1	12/13/13	REVISED/WORK-IN PROGRESS DINGS
2	1/15/14	REVISED FOR REVIEW
3	10/21/13	ADJUST - PROPOSED CROSSING & ROAD CORRIDORS IS
4	10/23/13	REVISED - ADJUSTED TO MATCH SURVEY DATA

BY	DATE	APPROV
GC	AL	AL
OS	AL	AL
FC	AL	AL
JM	AL	AL

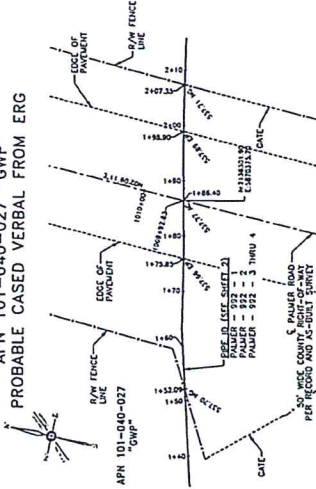
PROJECT:	0120828
DATE:	10/27/2013
SCALE:	AS SHOWN
DATE:	11/14/2013
SCALE:	1" = 10'
DATE:	11/14/2013
SCALE:	1" = 10'
DATE:	11/14/2013
SCALE:	1" = 10'
DATE:	11/14/2013
SCALE:	1" = 10'

ENGINEER:	DALE H. WHITTELLI	DATE:	11/14/2013
SURVEYOR:	ALLEN REALTY INC	DATE:	11/14/2013
CHECKED BY:	DALE H. WHITTELLI	DATE:	11/14/2013
PROJECT:	0120828	NO.	12 OF 14
DOCUMENT TYPE:	TOPIC SURVEY	CAD FILE NO.	0120828C10
REV.	4	REV.	4



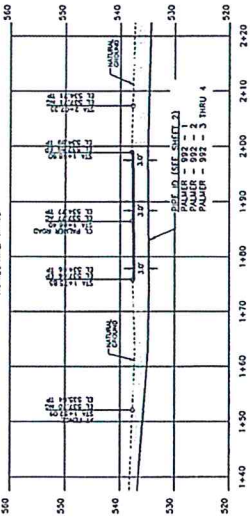
CROSSING NO. 14

APN 101-040-027 "GWP"
PROBABLE CASED VERBAL FROM ERG



PLAN

HORIZONTAL: 1"=10'



PROFILE

VERTICAL: 1"=10'
HORIZONTAL: 1"=10'

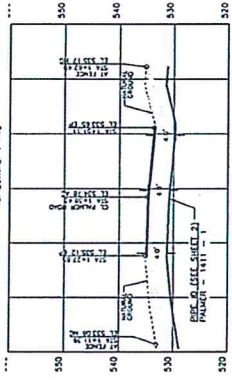
CROSSING NO. 15

APN 101-040-027 "GWP"
NO CASING VISIBLE



PLAN

HORIZONTAL: 1"=10'



PROFILE

VERTICAL: 1"=10'
HORIZONTAL: 1"=10'



ERG
EXHIBITED PRODUCT SERVICES
18555 DIXON ROAD
SAN LUIS OBISPO, CA
(805) 255-2331
www.erginc.com

PROJECT: G120828

REV	DATE	DESCRIPTION
0	11.28.13	PRELIMINARY/WORK-IN PROGRESS DWS
1	1.15.13	AS-BUILT FOR REVIEW
2	1.15.13	AS-BUILT - PROCEED WITH 3" WOOD CASING 18"
3	10.21.13	AS-BUILT - PROCEED WITH 3" WOOD CASING 18"
4	10.21.13	AS-BUILT - PROCEED WITH 3" WOOD CASING 18"

ERG ERG Resources, LLC

REVISIONS DRAWINGS

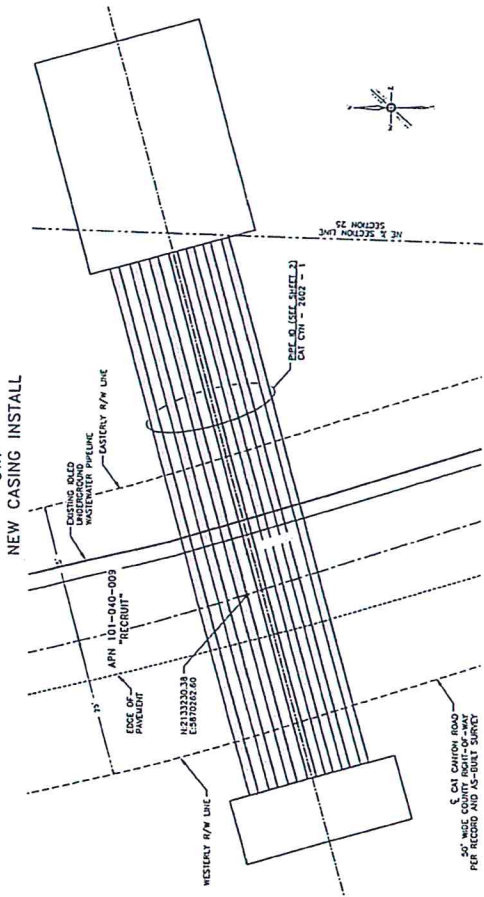
APN 101-040-027 "GWP"
NO CASING VISIBLE

BY	CHK	APPROV
GC	AL	AL
OS	AL	AL
FGH	AL	AL
DAI	AL	AL

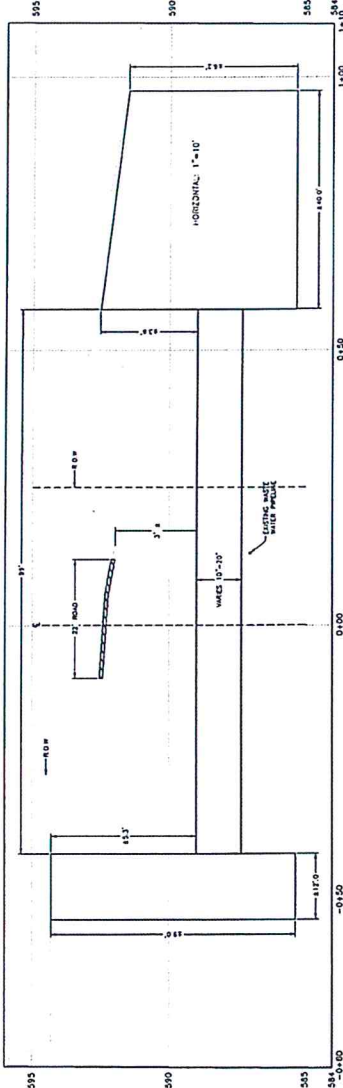
OLD WASTE WATER LINE - PALMER ROAD - CAT CANTON ROAD
ERG RESOURCES, LLC
PORTLAND, OREGON
1100 N. 10TH AVE. SUITE 100
CLATSOP COUNTY, OREGON 97131
ENGINEER: ALBERTO LOPEZ DATE: 11/14/2013 SCALE: 1" = 100'
SURVEYOR: DALE H. WILLELLUM ORIGINAL ENG NO. NO. 13 OF 14
COMPILED BY: DALE H. WILLELLUM
DOCUMENT TYPE: TOPOG SURVEY CAD FILE NO. G120828CAD 4

CROSSING NO. 16

APN 101-040-009 / 010
"GWP"
NEW CASING INSTALL



PLAN
HORIZONTAL: 1"=10'



PROFILE
VERTICAL: 1"=10'
HORIZONTAL: 1"=10'



REV	DATE	DESCRIPTION	BY	CHKD	APP'D
0	11.28.12	PRELIMINARY/WORK-IN-PROGRESS DWG	GC	AL	AL
1	11.29.12	2ND TO 3RD DRAFT FOR REVIEW	GC	AL	AL
2	10.29.13	ISSUAL - EXISTING CROSSING & ADDED CROSSING 18	FGH	AL	AL
3	10.31.13	ISSUAL - ADDED OLD WASTE WATER PIPE	AW	AL	AL

DRAWN BY: ALBERTO LOPEZ
 CHECKED BY: CLET CAMBERNEY
 PROJECT: 6128878
 SHEET NO. 14 OF 14
 DOCUMENT TYPE: TOPG SURVEY
 DATE: 11/14/2013
 SCALE: 1" = 100'
 SHEET NO.: 14 OF 14
 REV.: 4
 CSD FILE NO.: 01288878

NO.	DESCRIPTION
05-10033	05-10033-CAT CANYON APRIL 1982
012021810	CAT CANYON ROAD BASE MAP

REFERENCE DRAWINGS