

ATTACHMENT 3

LAND USE AND DEVELOPMENT CODE (ZONING MAP AMENDMENT)

ORDINANCE NO. _____

AN ORDINANCE TO AMEND ASSESSOR PARCEL NUMBER 145-200-005

Case No. 16RZN-00000-00002

The Board of Supervisors of the County of Santa Barbara ordains as follows:

SECTION 1:

All zoning maps and zoning designations previously adopted under the provisions of Sections 35.14.020 and 35-516, "Adoption of New Zoning Maps," of Chapter 35, Zoning, of the Code of the County of Santa Barbara, California, are hereby repealed as they relate to Assessor's Parcel Number 145-200-005 shown on the map attached hereto as Exhibit A and incorporated by reference.

SECTION 2:

Pursuant to the provisions of Section 35.14-020, "Adopting New Zoning Ordinances and Maps," of the Land Use and Development Code, of Chapter 35 of the Code of the County of Santa Barbara, California, the Board of Supervisors hereby adopts by reference the Zoning Map identified as Board of Supervisors Exhibit A, dated (date of Board of Supervisors Approval), which redesignates Assessor's Parcel Number 145-200-005 from 100-AG, Agriculture, 100 acres minimum parcel size, to AG-II-100, Agriculture, 100 acres minimum parcel size, and which is made a part of said section by reference, with the same force and effect as if the boundaries, locations, and lines of the districts and territory therein delineated and all notations, references, and other information shown on said Zoning Map were specifically and fully set out and described therein, as exhibited in Exhibit A, and which is made part of said section by reference, with the same force and effect as if the boundaries, locations, and lines of the districts and territory therein delineated and all notations, references, and other information shown on said Zoning Map were specifically and fully set out and described therein.

SECTION 3:

The Chair of the Board of Supervisors is hereby authorized and directed to endorse said Exhibit A to show that said map has been adopted by this Board.

SECTION 4:

Except as amended by this Ordinance, Section 35.14.020 of the Land Use and Development Code of Santa Barbara County, California, shall remain unchanged and shall continue in full force and effect.

SECTION 5:

This ordinance shall take effect and be in force thirty (30) days from the date of its passage; and before the expiration of fifteen (15) days after its passage it, or a summary of it, shall be published once, with the names of the members of the Board of Supervisors voting for and against the same in the Santa Barbara Newspress, a newspaper of general circulation published in the County of Santa Barbara.

PASSED, APPROVED AND ADOPTED by the Board of Supervisors of the County of Santa Barbara, State of California, this _____ day of _____, 2016, by the following vote:

AYES:
NOES:
ABSTAINED:
ABSENT:

PETER ADAM, Chair
Board of Supervisors
County of Santa Barbara

ATTEST:

MONA MIYASATO
Clerk of the Board of Supervisors

By _____
Deputy Clerk

APPROVED AS TO FORM:

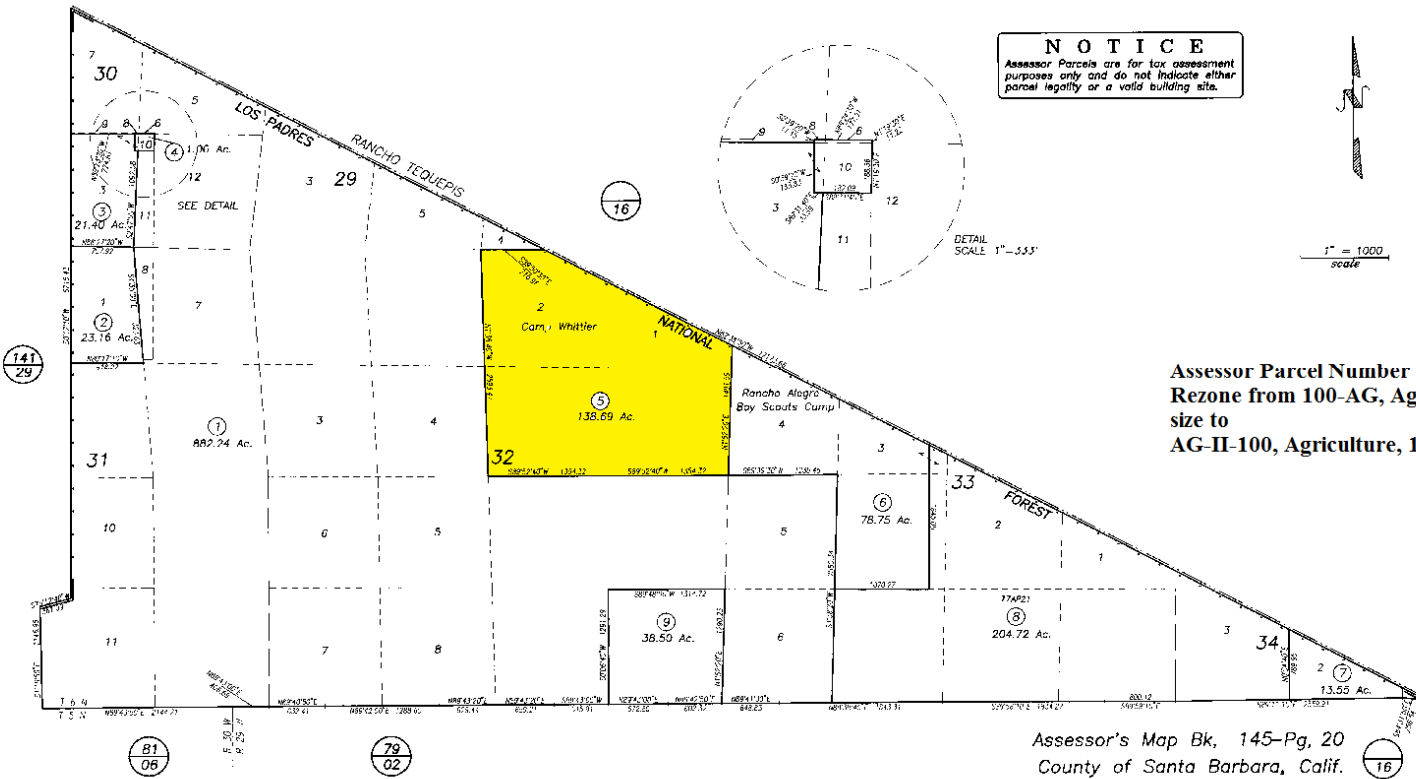
MICHAEL C. GHIZZONI
County Counsel

By _____
Deputy County Counsel

Exhibit A

POR. T6N R29W SBB&M

145-20



NOTICE
Assessor Parcels are for tax assessment purposes only and do not indicate either parcel legality or a valid building site.



1" = 1000
scale

Assessor Parcel Number 145-200-005
Rezone from 100-AG, Agriculture, 100 acre minimum parcel size to
AG-II-100, Agriculture, 100 acre minimum parcel size

Assessor's Map Bk, 145-Pg, 20
County of Santa Barbara, Calif.

09/01 correction, add ag pres f on 08