



Montecito Recovery

Returning-Rebuilding-Preparing-Creating



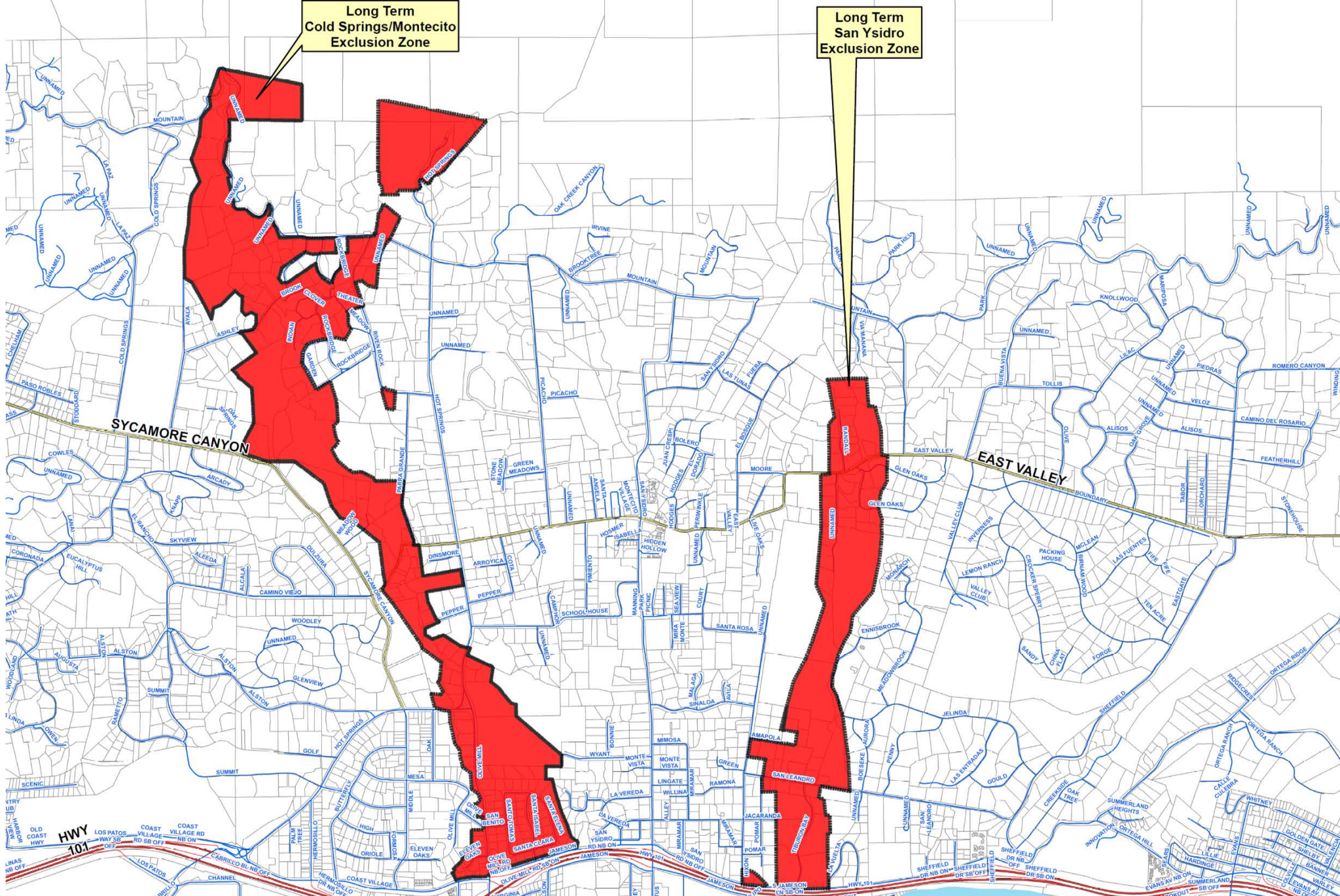
Status Update

Rob Lewin, Santa Barbara County

Director of Emergency Management

Long Term
Cold Springs/Montecito
Exclusion Zone

Long Term
San Ysidro
Exclusion Zone



Returning

COMPONENTS OF LONG TERM RECOVERY

Debris Management	Watershed – Flood control	Health & Human Services	Infrastructure	Public Safety	Rebuild - Permits/Planning
County, State and Federal agencies involved in residential and public property clean up and removal	County, State and Federal agencies involved in watersheds, creeks, debris basins, flood control mitigations and planning for next storms	County, Non-profits, State and Federal agencies working with individual assistance, Local Assistance Center, Public Health, Behavioral Wellness, Red Cross, Animal Services,	County, Montecito Water District and Sanitary District, State and Federal agencies working on Public (infrastructure) Assistance	County Sheriff, Montecito Fire District, CHP, State and Federal agencies involved with security, repopulations, evacuations	County departments responsible for permitting, planning, building services

Returning

- **Caring for those who lost or have damaged homes**
 - Sheriff providing escorts into exclusion zones
 - Yellow and red-tagged residences may not be repopulated yet
 - Counselors & Red Cross have been present to assist those returning home
 - Individual Assistance – Long term recovery
 - VOAD - Housing, unmet needs, fiscal, mental health counseling
- **Return residents home as soon as safely possible**
 - Residents were not allowed in homes until electricity, water & sanitation were restored
 - Long-Term Exclusion Zone will remain in areas severely damaged or destroyed.
- **Secure area for residents**
 - Sheriff and partner law enforcement will ensure security of the areas impacted.

Returning

- **Schools**

- Montecito Union opened last Friday, January 26
- Private schools

- **Reopening Businesses**

- Upper Village area opened Wednesday, January 24
- Coast Village Road fully opened Wednesday, January 24
- Provide insurance assistance
 - FEMA
 - Legislation

Rebuilding *Challenges*

- Estimated 2 million cubic yards of material
 - Multiple challenges to removal
- The topography is *changing*

Given the challenges here are our objectives...

Rebuild *Objectives*

- Clear properties of mud and debris
- Debris Removal Options:
 - Homeowner
 - Homeowner & volunteer
 - Contract (State - ROE to remove)
- Repair and rebuild public infrastructure
 - Water District – temporary repairs est. 1/31/18
 - Sanitary District– no damage to treatment facility. Line repair est. 1/31/18
 - County Roads – Now passable
 - Bridges, Private Roadways & Hwy 192 – Damaged - repair needs being assessed
 - HWY 101 Open
 - Continued truck/traffic competition on roadways

Rebuild *Objectives*

- Repair and Rebuild homes (P&D)
 - Dedicated services
 - Dedicated case management teams- Specific case planner assigned to household
 - Consistency and continuity of planning staff
 - Expedited permitting process currently in development
- Rebuild our “community” – Long Term Recovery Group
 - Individual assistance, temporary housing, counseling, case management, community/nonprofit supports
- Time frames
 - Local Assistance and Recovery Center (LAC) will transition to a Disaster Recovery Center and a network of support on February 5

Preparing

- **Watershed Management and Mitigation/Resiliency**
 - Creeks and implications
 - Burn Area Emergency Response (BAER), Watershed Emergency Response Team (WERT) with members from CA Geological Survey and Det. of Water Resources
- **Wildfire Protection (MFD)**
- **Storm readiness**
 - Operational – first responders
 - Plan for public to prepare
 - Ongoing communications

Creating

FEMA Definition of Whole Communities

- Understanding community complexity
- Recognizing community capabilities and needs
- Fostering relationships with community leaders
- Building and maintain partnerships
- Empowering local action.
- Leveraging and strengthening social infrastructure, networks, and assets.

Creating

- Lessons learned from other community recovery efforts
 - Act quickly
 - Actively plan
 - Engage the whole community
 - Develop partnerships, networks and coordinate activities
 - Make decisions locally

Creating

- **Community Engagement:** Full deployment of our human, organizational, philanthropic, and creative capital to build the community consistent with the vision created by local residents.