



LAND USE ELEMENT AMENDMENT - DISADVANTAGED COMMUNITIES

Board of Supervisors Hearing
February 3rd, 2015

BACKGROUND

- Senate Bill 244 (SB 244) addresses regional inequities and infrastructure deficits within identified disadvantaged communities
- LAFCO, City, and County requirements
 - LAFCO must consider present and future need for infrastructure services when cities are updating sphere of influence
 - Cities must identify disadvantaged communities within SOI and address infrastructure needs
 - Counties must identify unincorporated disadvantaged communities and address infrastructure needs

BACKGROUND

- Disadvantaged community definition
 - “A fringe, island, or legacy community in which the median household income is 80 percent or less than the statewide median household income”
 - 50 years or older
 - Minimum of 10 dwellings
 - Outside sphere of influence of a city

METHODOLOGY

4

- Data used: parcel data, 2010 Census data
- Communities studied to confirm age of community, number of units, and median income
- Using definitions provided in SB 244, identified seven communities within County
 - ▣ Eliminated two communities
 - Mission Hills (N. of Burton Mesa Road)
 - Isla Vista

IDENTIFIED COMMUNITIES

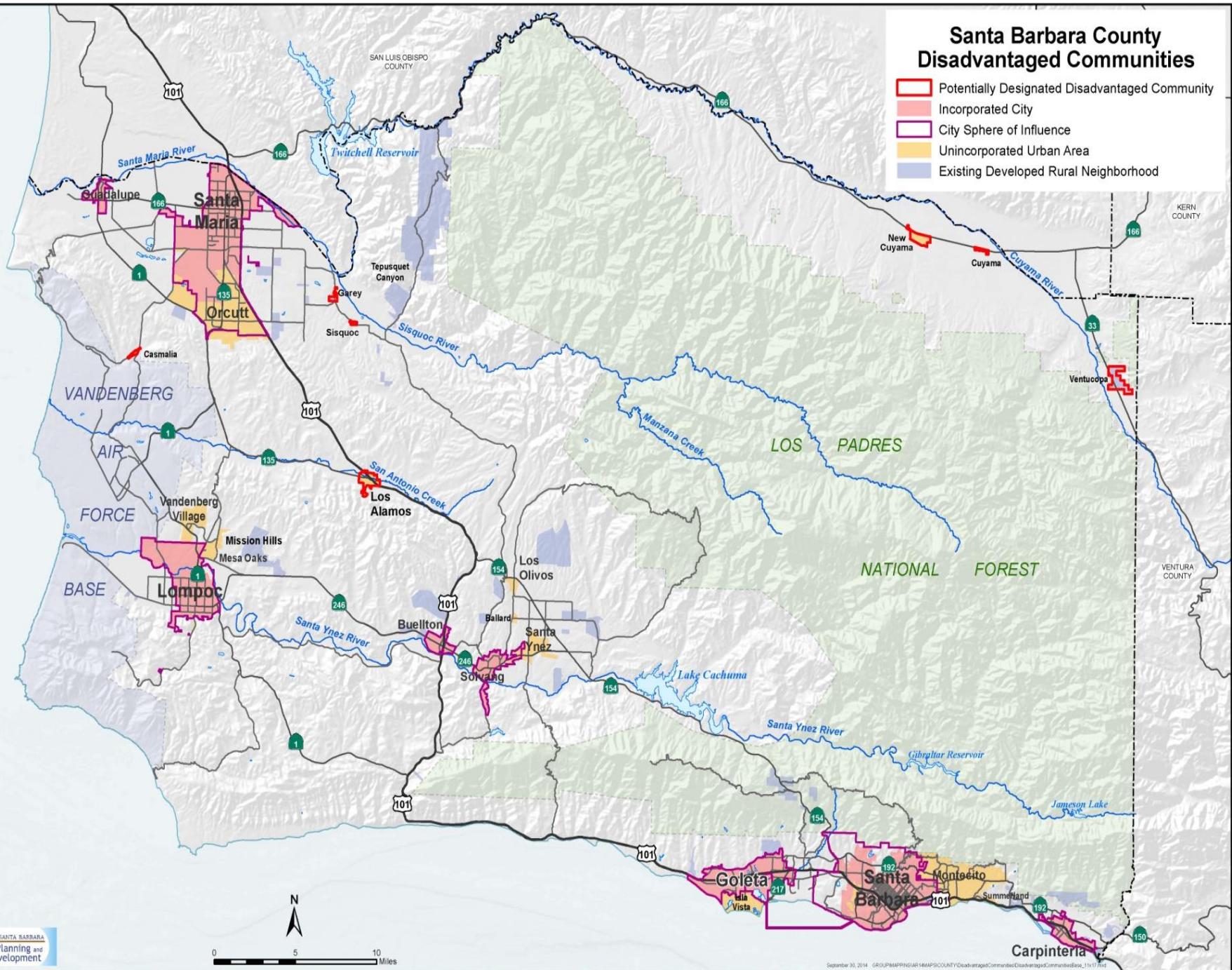
5

- Ventucopa
- Cuyama
- New Cuyama
- Garey
- Sisquoc
- Casmalia
- Los Alamos



Santa Barbara County Disadvantaged Communities

- Potentially Designated Disadvantaged Community
- Incorporated City
- City Sphere of Influence
- Unincorporated Urban Area
- Existing Developed Rural Neighborhood



INFRASTRUCTURE NEEDS

7

Community	Public Water Available	Public Sewer Available	Stormwater Drainage	Fire Protection
Ventucopa	No	No	No	Distant (Stn. 41)
Cuyama	No	No	No	Nearby (Stn. 41)
New Cuyama	Yes	Yes	No	Nearby (Stn. 41)
Sisquoc	Yes	No	No	Nearby (Stn. 23)
Garey	No	No	No	Nearby (Stn. 23)
Casmalia	Yes	No	No	Distant (Stn. 21)
Los Alamos	Yes	Yes	No	Nearby (Stn. 24)

LAND USE ELEMENT UPDATES

8

- New “Disadvantaged Unincorporated Communities Policies” section
 - ▣ Encourages extension of services
- New definition of disadvantaged unincorporated community
- Appendix addition
 - ▣ Background on legislation, discussion of each community, analysis of existing infrastructure, list of funding sources, maps

FUNDING SOURCES

- California Department of Public Health Safe Drinking Water State Revolving Fund
- State Water Resources Control Board Revolving Fund Program
- Department of Water Resources Integrated Regional Water Management Grant Program
- Sustainable Communities Planning Grant and Incentive Program
- United States Department of Agriculture Rural Development Grants and Loans
- Community Development Block Grant Funds

RECOMMENDATIONS

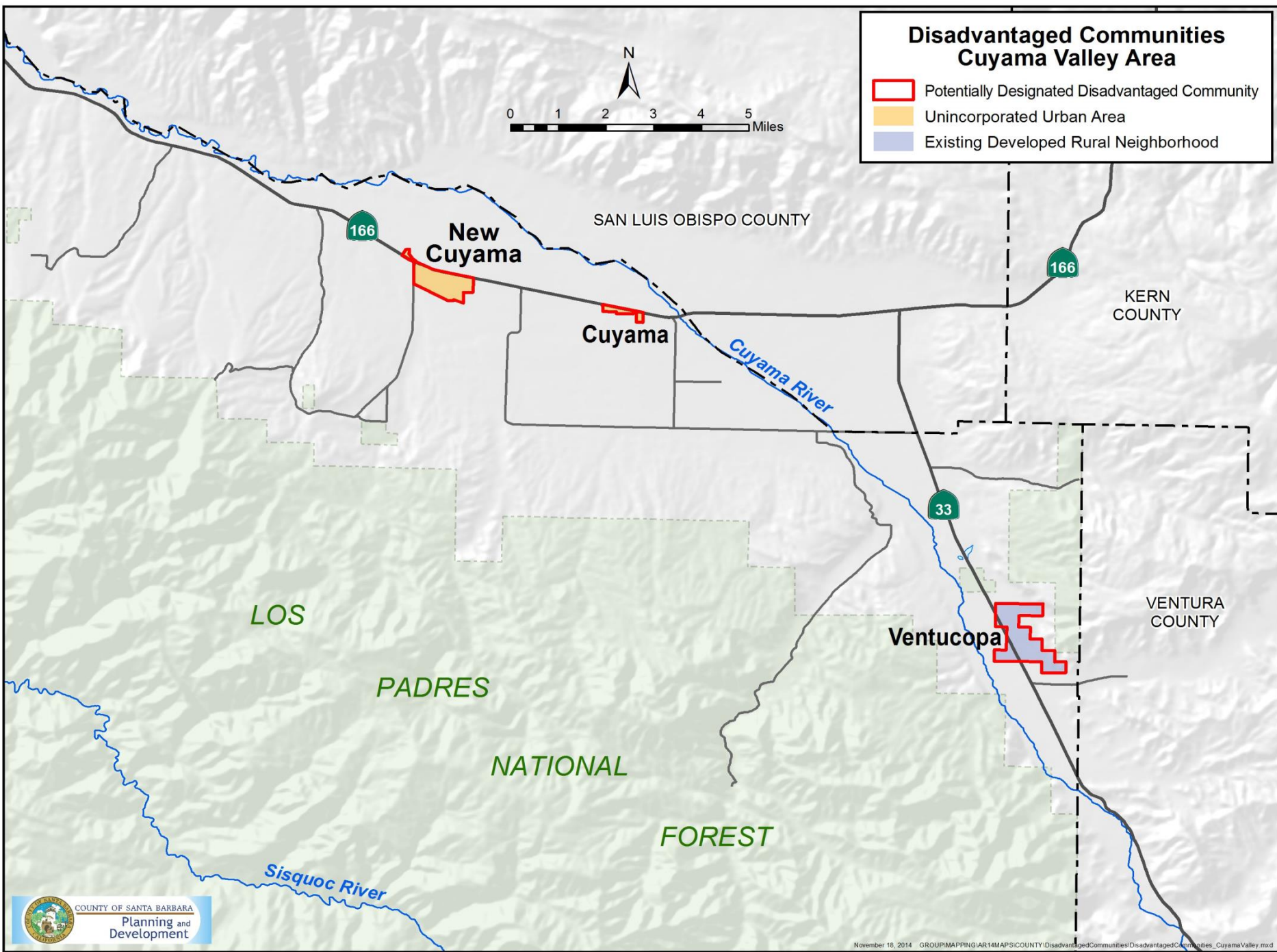
- **Case No. 14GPA-00000-00015.** Your Board's motion should include the following:
 - Make the findings for approval of the proposed Comprehensive Plan amendment, including CEQA findings
 - Find that this amendment is exempt pursuant to Section 15061(b)(3) of the State Guidelines for Implementation of the California Environmental Quality Act and Notice of Exemption
 - Adopt a Resolution approving Case No. 14GPA-00000-00015 incorporating Disadvantaged Unincorporated Communities Policies into the Santa Barbara County Comprehensive Plan Land Use Element



QUESTIONS?

Disadvantaged Communities Cuyama Valley Area

-  Potentially Designated Disadvantaged Community
-  Unincorporated Urban Area
-  Existing Developed Rural Neighborhood



Disadvantaged Communities Northwestern Santa Barbara County

-  Potentially Designated Disadvantaged Community
-  Incorporated City
-  City Sphere of Influence
-  Unincorporated Urban Area
-  Existing Developed Rural Neighborhood

