



# **Zaca Fire Watershed Update**

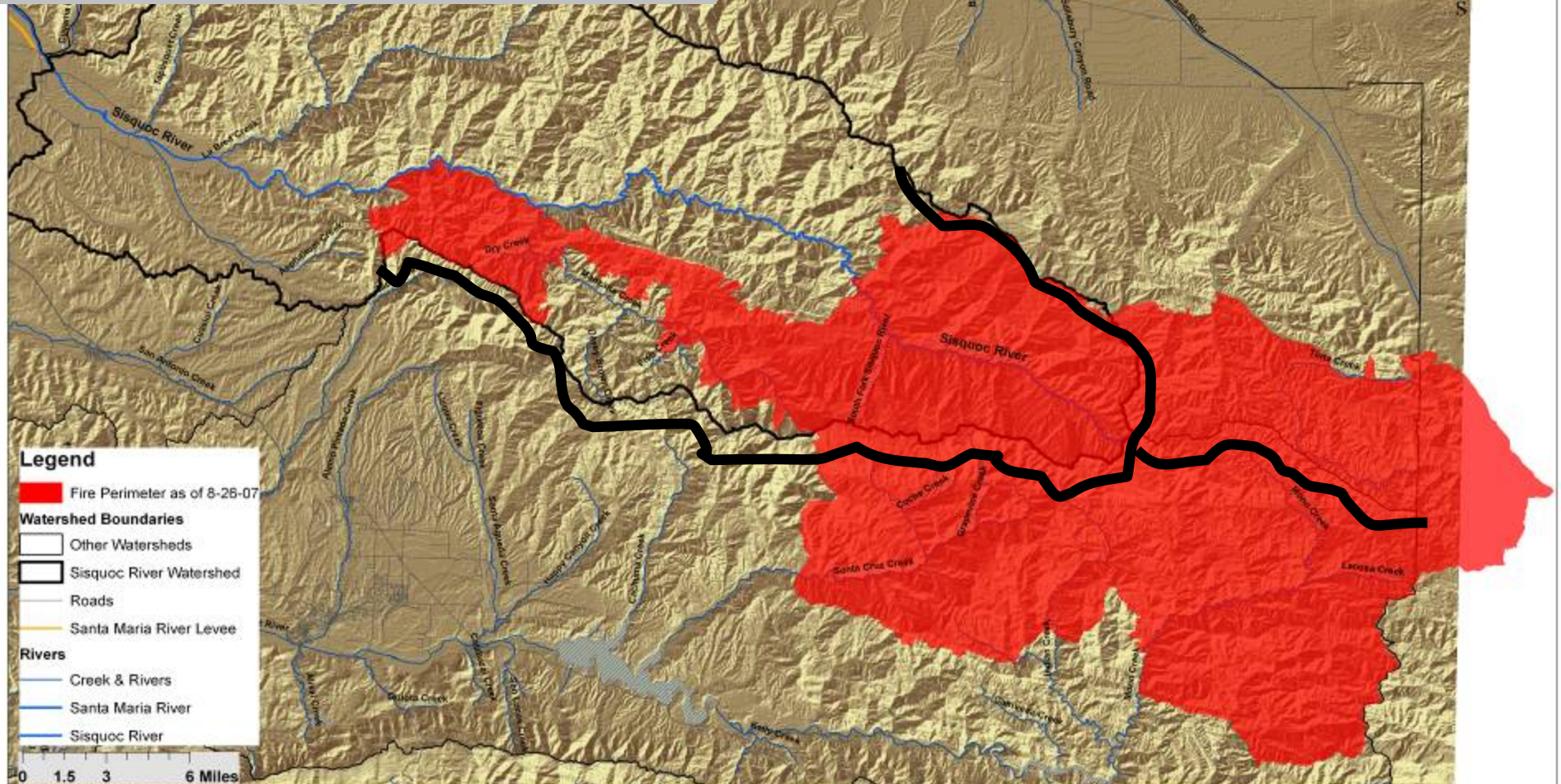
**Board of Supervisors  
Meeting  
November 20, 2007  
Public Works Department**

## Watershed Statistics

Sisquoc Watershed ~ 25% Burned

Cachuma Watershed ~ 44% Burned

Cuyama Watershed ~ 6% Burned



# ZACA FIRE

## July – September 2007

# Public Works Department Watershed Initiatives

- Evaluate Hazard
- Coordinate Efforts
- Develop Projects
- Implement Projects
- Seek Funding / Help



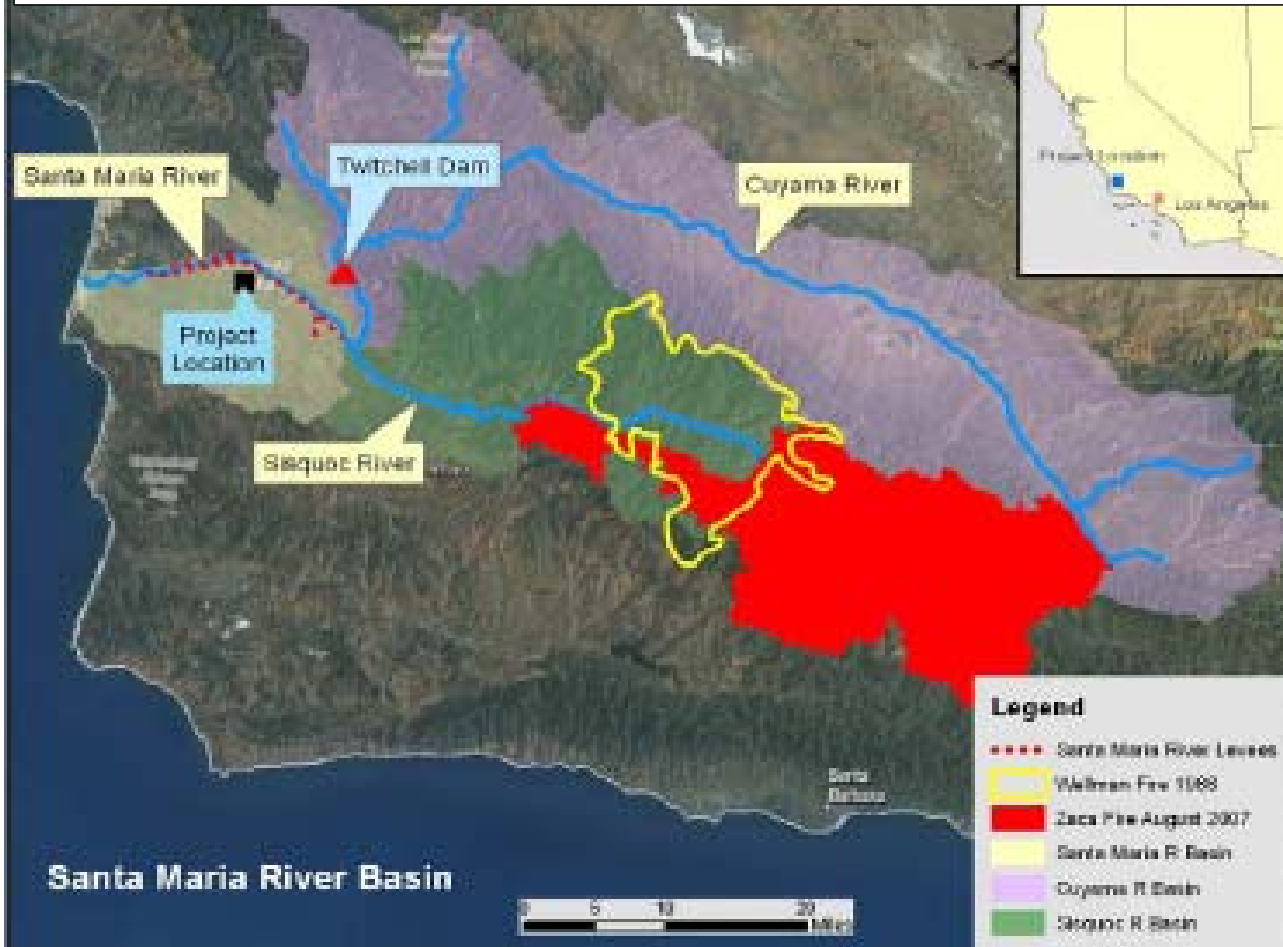
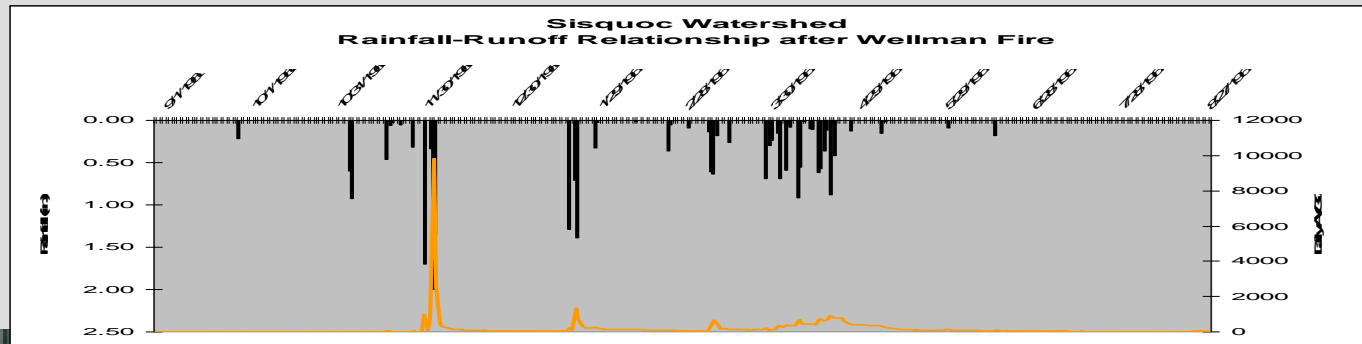
SM River Following Wellman Fire

# Zaca Fire Potential Impacts

- Impacts
  - Increased Flow off Burned Watersheds
  - Increased Debris Loading / Sedimentation
- Impact Areas of Concern
  - Cachuma Reservoir, Gibraltar Reservoir
  - Santa Maria River Levee



# Wellman Fire 1966



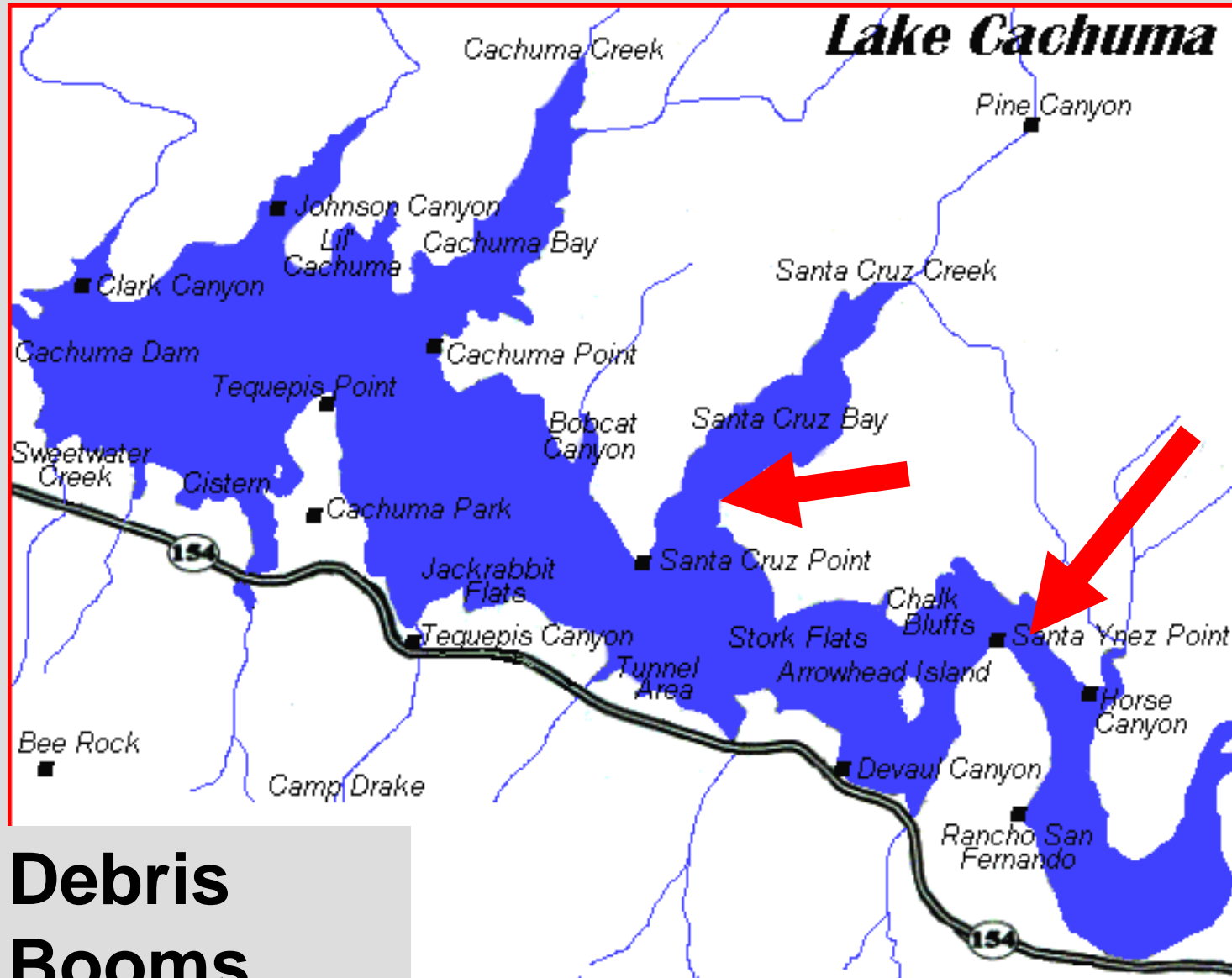
- **Similar Fire in Same Watershed**
- **First Major Flow against the Levees**
- **First Exposure to Levee's Problem**
- **Modest Rain (early) Triggers Large Flow**

# Santa Maria River 1966



December 6, 1966 Following Wellman Fire

# Response Projects



**Debris  
Booms**

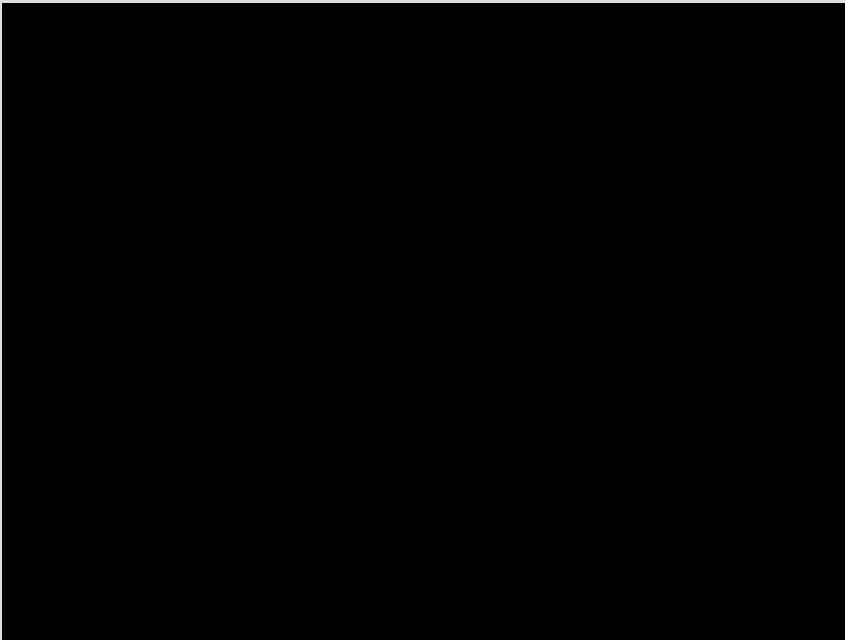
# Cachuma Debris Control Booms



**Debris Booms Placed  
in 2 Locations**



# Installation of Debris Booms

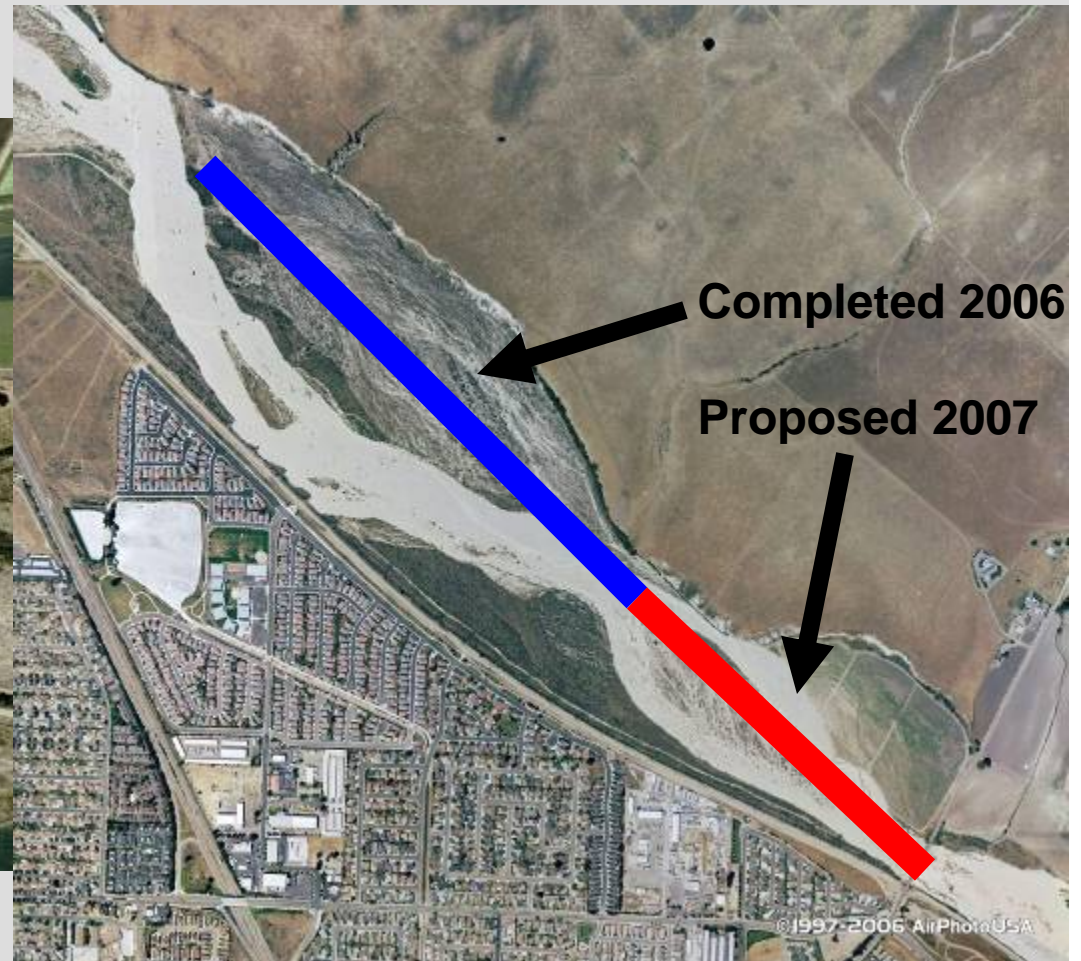


# Completed Project



# Response Projects

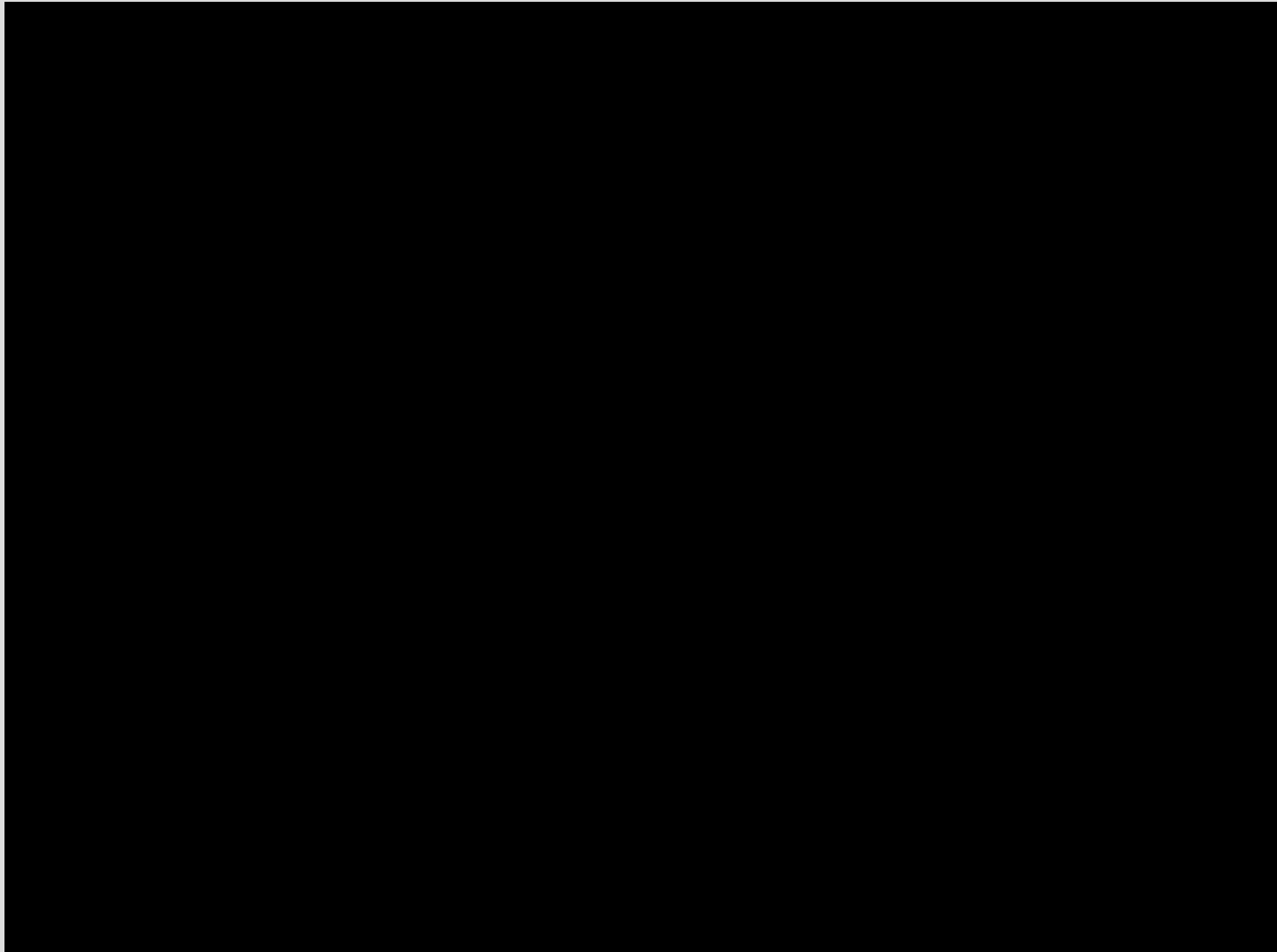
## Santa Maria River Pilot Channels



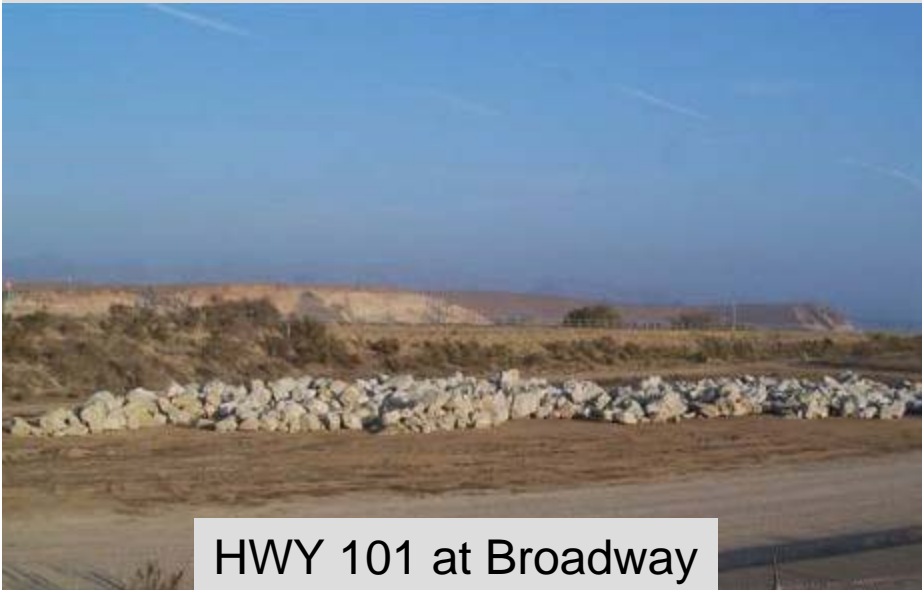
# SM River – Suey Crossing



# **Santa Maria River Guadalupe**



# Response Project Emergency Rock Stockpiling



HWY 101 at Broadway



SM Landfill

# Response Projects SM River Sediment Basins



**City of Santa Maria Landfill**

# Other Initiatives

- Levee Patrol
- Remote Rain / Stream Gages
- Public Awareness
- Flood Forecasting





# Funding Summary

- County Funds
  - Water Agency, Levee Flood Zone, Parks
- Other Local Agencies
  - COMB, City of Santa Barbara, City of Santa Maria, Grower-Shipper Association
- State OES



**Governors Office of Emergency Services**  
Henry Renteria, Director



# Questions

