

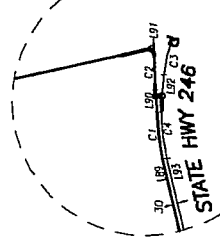
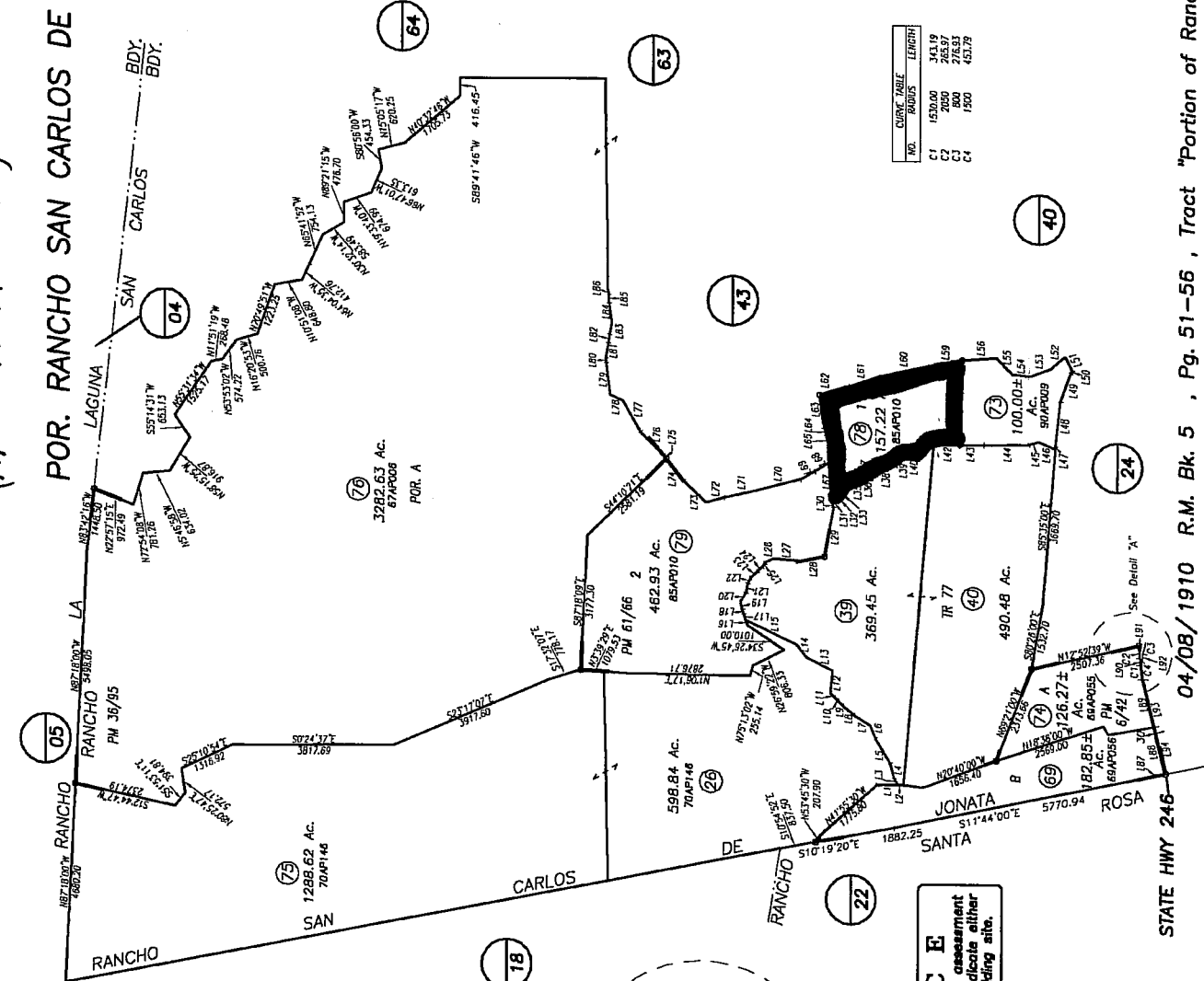
07 AGP-00000-00013
(APN 099-190-078)

POR. RANCHO SAN CARLOS DE JONATA

099-19



1" = 2640'
SCALE ±



1" = 880'
SCALE

NOTICE
Assessor's Parcels are for tax assessment purposes only and do not indicate either parcel legality or a valid building site.

NO.	BEARING	DISTANCE
L 1	N75°07'17\"	453.50
L 2	S72°20'02\"	707.10
L 3	S89°14'00\"	334.00
L 4	N65°14'00\"	438.40
L 5	N40°13'00\"	595.70
L 6	N69°40'00\"	561.90
L 7	N65°42'00\"	511.90
L 8	N37°10'10\"	810.00
L 9	N62°37'24\"	1215.65
L 10	N62°37'24\"	767.30
L 11	N62°37'24\"	1016.50
L 12	N62°37'24\"	1172.21
L 13	N62°37'24\"	1724.70
L 14	N62°37'24\"	728.47
L 15	N62°37'24\"	1210.04
L 16	N62°37'24\"	2411.55
L 17	N62°37'24\"	364.31
L 18	N62°37'24\"	1028.91
L 19	N62°37'24\"	762.04
L 20	N62°37'24\"	270.24
L 21	N62°37'24\"	666.11
L 22	N62°37'24\"	1133.13
L 23	N62°37'24\"	768.47
L 24	N62°37'24\"	201.88
L 25	N62°37'24\"	282.57
L 26	N62°37'24\"	476.71
L 27	N62°37'24\"	811.10
L 28	N62°37'24\"	566.44
L 29	N62°37'24\"	1311.20
L 30	N62°37'24\"	1150.48
L 31	N62°37'24\"	367.90
L 32	N62°37'24\"	515.23
L 33	N62°37'24\"	211.30
L 34	N62°37'24\"	1037.30
L 35	N62°37'24\"	211.00
L 36	N62°37'24\"	452.73

NO.	RADIUS	LENGTH
C 1	150.00	343.19
C 2	200.00	265.97
C 3	800.00	276.33
C 4	150.00	452.73

Assessor's Map Bk, 099-Pg, 19
County of Santa Barbara, Calif.

LD/09

190-77 Inls 78 & 79

04/08/1910 R.M. Bk. 5 , Pg. 51-56 , Tract "Portion of Rancho San Carlos De Jonata"

STATE HWY 246