

ATTACHMENT D-1: PROJECT PLANS AND PHOTOSIMUATIONS

NextIG Networks, Inc.
SAN JOSE, CALIFORNIA 95131
PHONE (408) 554-1500

PROJECT INFORMATION:
MPC1035CALBERB014
COUNTY OF SANTA
BARBARA, CA 93108

ESB-14
453 SHUTTLE D.R.

CURRENT ISSUE DATE:
07/13/2009

PLANS PREPARED BY:
**HP COMMUNICATIONS
INC.**
13241 Avenida Cuy. Rd
Emery, CA 92523
Phone: (951) 471-0474

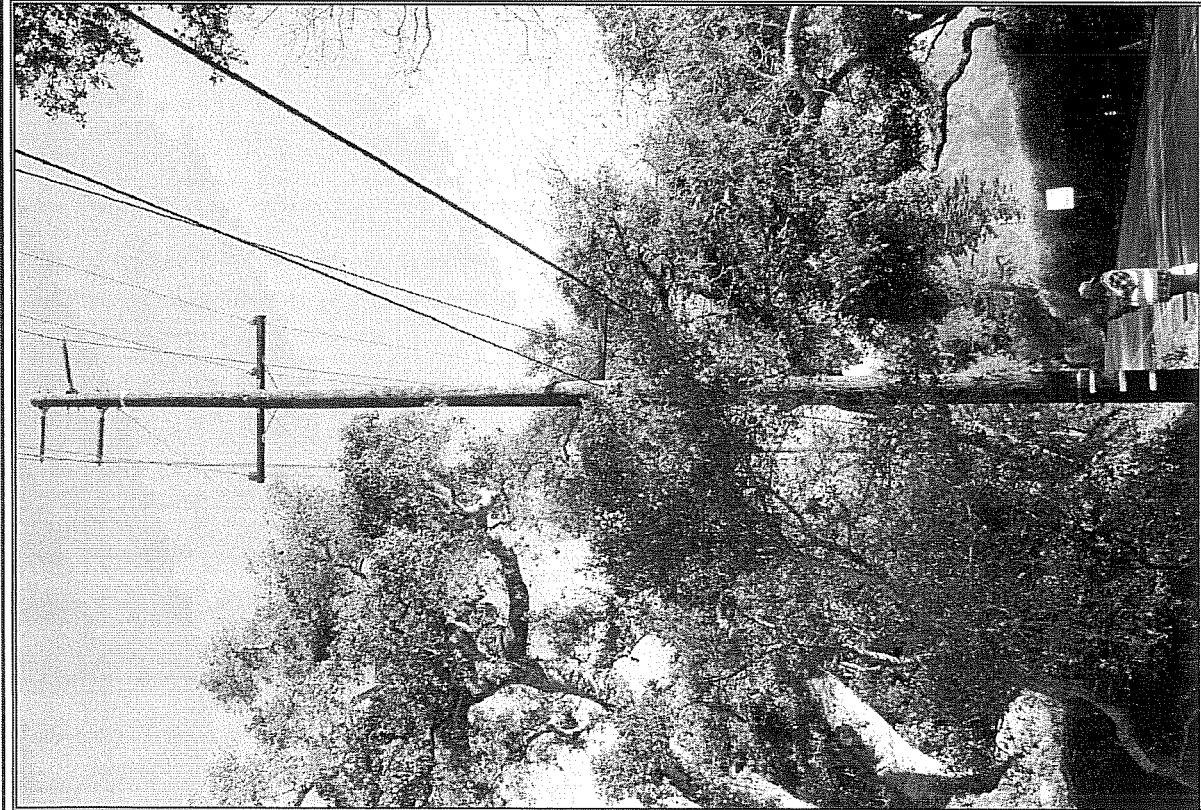
PLANS APPROVED BY:
NextIG Networks, Inc.

STRAND MOUNT
PHOTOSIM

SHEET NUMBER: 0
0 OF 0



PROPOSED



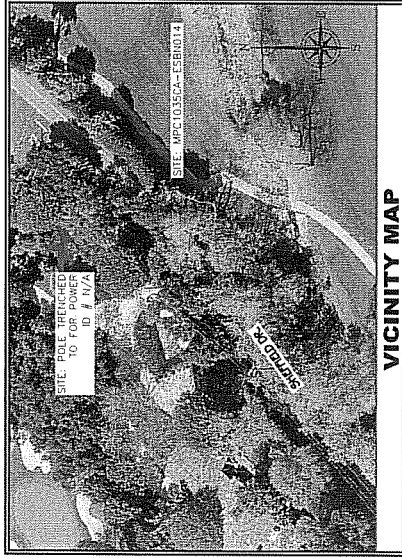
EXISTING

ATTACHMENT D-2: PROJECT PLANS AND PHOTOSIMUATIONS





NextG Networks of California, Inc.
MPC1035CA-ESBN014
EAST SANTA BARBARA
SANTA BARBARA, CA 93108



VICINITY MAP



CODE COMPLIANCE

1. STATE ENGINEERING CODE 5. STATE FILING CODE
 2. STATE BUILDING CODE 6. STATE ELEC. CODE
 3. CODE MFGA-101-1020 7. STATE FIRE CODE
 4. STATE WELDRING CODE 8. CITY/COUNTY ORDINANCES

PROPERTY INFORMATION

CUSTOMER: NEXTG NETWORKS OF CALIFORNIA, INC.
 PROJECT: EAST SANTA BARBARA
 TRACT: MPC1035CA-ESBN014
 PARCEL: 34.4.309
 LATITUDE: -119.69415
 STREET ADDRESS: 2165 BRIDLEWOOD DR
 CITY, STATE: SANTA BARBARA, CA 93108
 COUNTY: COUNTY OF SANTA BARBARA
 ZIP: 93108
 POLE TYPE: WOOD UTILITY POLE
 RAD. CENTER: 35'-0"
 / AVENUE: 4000R
 ANTENNA TYPE: AWG360-1210-75-10-H
 ATTACH: FOR AVENUE, N/A
 NUMBER OF POLE: SECONDARY
 POLE ACCESS: ON ROAD
 POLE OWNER: N/A
 POLE LEGATION & IDENTIFICATION: W SIDE OF SHEPHERD DR

PROJECT SUMMARY

PROJECT DESCRIPTION

THE RESULTS INDICATE IN THE CONSTRUCTION OF THE ANTENNA AND ASSOCIATED EQUIPMENT. THE RESULTS INDICATE THAT THE ANTENNA AND ASSOCIATED EQUIPMENT CAN BE INSTALLED IN THE EXISTING UTILITY POLE. THE ANTENNA AND ASSOCIATED EQUIPMENT CAN BE INSTALLED IN THE EXISTING UTILITY POLE. THE ANTENNA AND ASSOCIATED EQUIPMENT CAN BE INSTALLED IN THE EXISTING UTILITY POLE.

PROJECT SCOPE

SCOPE OF WORK: TO INSTALL ONE (1) ANTENNA AND ASSOCIATED EQUIPMENT ON EXISTING UTILITY POLE. THE ANTENNA AND ASSOCIATED EQUIPMENT CAN BE INSTALLED IN THE EXISTING UTILITY POLE. THE ANTENNA AND ASSOCIATED EQUIPMENT CAN BE INSTALLED IN THE EXISTING UTILITY POLE.

SHEET INDEX

SHEET	DESCRIPTION	REV.
1	TRAIL SHEET	0
2	UTILITY POLE / REPAIRED POLE EQUIPMENT PROFILES	0
3	UTILITY INFORMATION AND SITE ORIENTATION	0
4	TRIPICALS	0
5	IMPACTS	0

GENERAL CONTRACTOR NOTES

DO NOT SCALE DRAWINGS

CONTRACTOR SHALL VERIFY ALL DIMENSIONS AND ELEVATIONS AND REPORT ANY DISCREPANCIES TO THE ENGINEER BEFORE PROCEEDING WITH THE WORK OR BE RESPONSIBLE FOR SAME.

NextG Networks of California, Inc.
 1700 W. MONTELEONE BLVD.
 SUITE 100
 GREEN, CA 93021
 PHONE: (408) 544-1540

PROJECT INFORMATION

PROJECT: MPC1035CA-ESBN014
 EAST SANTA BARBARA
 SANTA BARBARA, CA 93108

CURRENT ISSUE DATE:
 08/19/2010

PERMIT SUBMISSION

REV. DATE

REV.	DATE	DESCRIPTION

PLANS PREPARED BY:
HP COMMUNICATIONS INC.
 5726 IMPERIAL DR
 SANTA ANA, CA 92705
 PHONE: (949) 471-1939

PLANS APPROVED BY:
 NextG Networks of California, Inc.

COMMENTS

SHEET TITLE

TITLE SHEET

SHEET NUMBER
 1

REVISION
 1 OF 5

