

EXHIBIT "B"

SECURITY-UPGRADES PROJECT

PROJECT ESTIMATE

PROJECT TITLE :	<u>SBCH Superior Court Counter-Security</u>	PROJECT NO :	_____
REQUESTOR:	_____	WORK ORDER :	_____
DESCRIPTION:	<u>Superior Court Clerks Office</u>	CONTACT :	_____
PROJECT MANAGER:	<u>Robert Ooley, FAIA-County Architect</u>	ESTIMATE NO :	_____
		AREA :	450

NOTES:

1 ADMINISTRATION:

0 HRS GRANT ADMIN / ADDITIONAL FUNDING	\$		-
50 HRS RFP/CONSULT. SERVICES & BID ADMIN	\$		5,500
0 HRS IN-HOUSE DESIGN & BID ADMIN	\$		-
50 HRS CONSTRUCTN CONTRACT ADMIN/CLOSEOUT	\$		5,500
0 (TOTAL HRS)	\$	OTHERS	-
<hr/>			
100 HRS X HOUR RATE	Duration:	12 WKS	\$ 11,000
REPRODUCTION/POSTAGE/OFFICE EXPENSE	0.3 %		\$ 400
ADMINISTRATION SUB-TOTAL			\$ 11,400

2 CONSTRUCTION:

CONST LABOR/MATERIAL (COST/SF	\$ 210	\$	94,500
BOND & INSURANCE	2 %	\$	1,900
GENERAL REQUIREMENTS/OVERHE	0 %	\$	-
CONSTRUCTION DIFFICULTY FACTC	0 %	\$	-
PREMIUM TIME FACTOR	0 %	\$	-
SUBTOTAL	214 /SF	\$	96,400
CONTRACTOR'S PROFIT	10 %	\$	9,600
CONSTRUCTION CONTINGENCY	10 %	\$	9,600
ARTS FEE	N/A %	\$	-
ASBESTOS CONTINGENCY	3 %	\$	2,900
SEWER (REPLACEMENT, FEES, ETC)	0 %	\$	-
SWING SPACE LEASE	0 %	\$	-
CONSTRUCTION SUB-TOTAL			\$ 118,500

3 EQUIPMENT & MISCELLANEOUS

FURNITURE & EQUIPMENT	LS	\$	-
FURNITURE INSTALLATION	0 %	\$	-
TELEPHONE INSTALLATION	0 LNS	\$	-
UTILITIES (CONST., HOOKUP & FEE:	0 %	\$	-
DATA INTERFACE (COAXIAL CABLE	0 LNS	\$	-
MAINTENANCE (FORCE ACCOUNT)	0 HRS	\$	-
MOVING, STORAGE & TEMP. RELOC	0 %	\$	-
EQUIPMENT & MISCELLANEOUS SUB-TOTAL			\$ -


4 PROFESSIONAL:

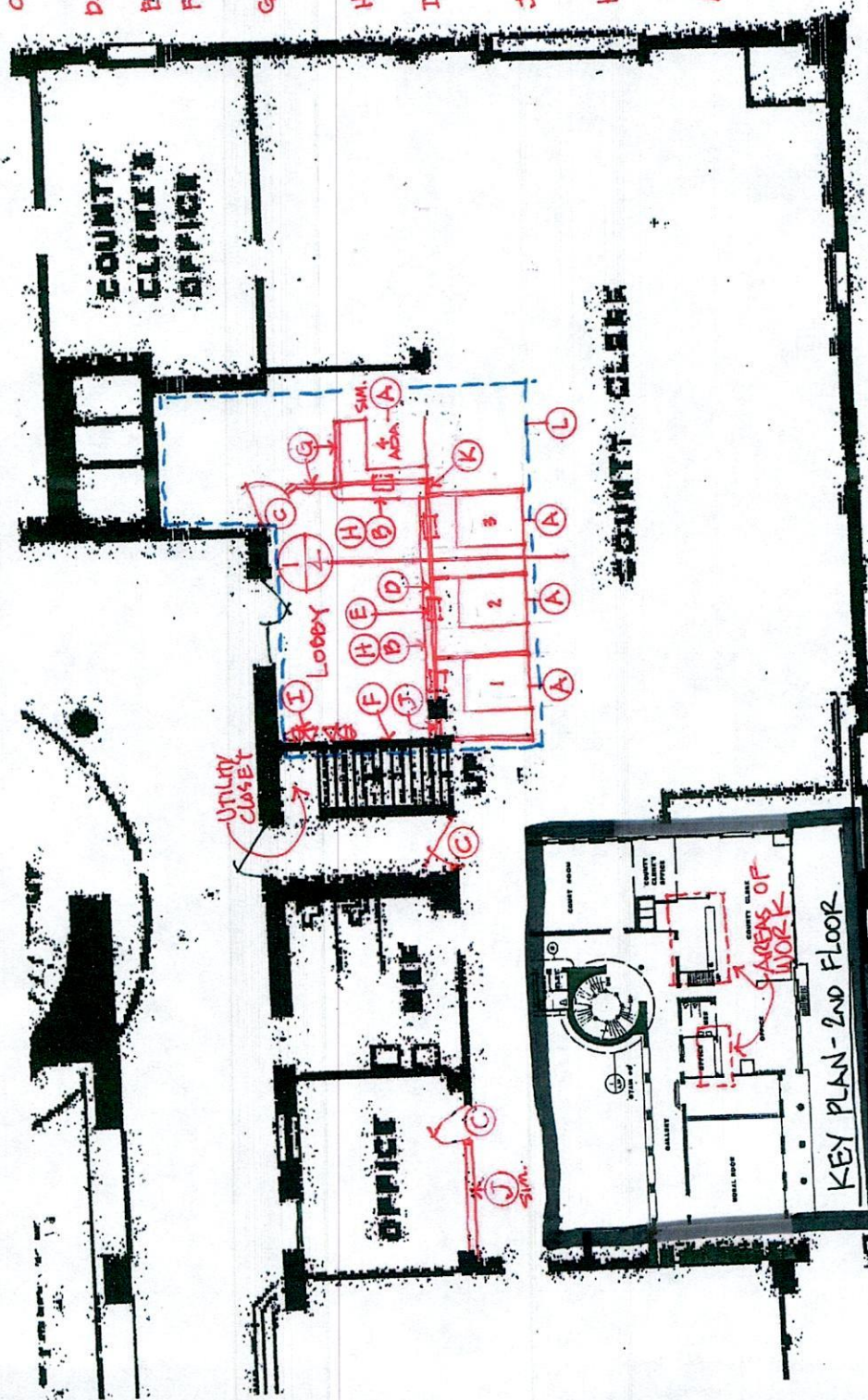
PROGRAMMING/PLANNING (% CON:	0 %	\$	-
DESIGN/ARCH/ENGR (% CONST)	15 %	\$	17,800
SOILS (TESTING/EVAL/REPORT)	0 %	\$	-
CONSTRUCTION TESTING (% CONS	3 %	\$	3,600
INSPECTION (HOURS) @\$35/hr	0 HRS	\$	-
PLAN CHECK SERVICES/PERMITS	0 %	\$	-
INDEPENDENT BID/ESTIMATE	0 %	\$	-
FURNITURE, EQUIP & MISC DESIGN	0 %	\$	-
PROFESSIONAL SUB-TOTAL			\$ 21,400
EXTENSION TOTAL			\$ 151,300

5 ADJUSTMENTS:

0.0% RATE...INFLATION (CONST/MONTH)	0 MO	\$	-
ESTIMATE CONTINGENCY (% EXT)	0 %	\$	-
ADJUSTMENT SUB-TOTAL			\$ -
TOTAL PROJECT COST			\$ 151,000

① NOTES

- A. NEW WORKSTATION - SEE PAGE 2.
- B. REUSE (E) COUNTER FACE
- C. NEW 3000 SC DOOR w/ CLOSER, AND CAM READER ACCESS / RELEASE. WIRE PUSH BUTTON. RELEASE TO WORKSTATIONS
- D. LEVEL II GLAZING WITH SUPPORTING FRAME UP TO 8'-0" ABOVE FINISH FLOOR
- E. PAPER PASS-THRU - SEE 
- F. FRAME GAP AT STUDS TO CEILING. DRYWALL BOTH SIDES, TAPE AND FINISH TO MATCH (E) WORK FINISH & TEXTURE.
- G. METAL FRAME/STUD WALL WITH (1) LAYER 3/4" PLYWOOD ON LOBBY SIDE - THEN (1) LAYER 5/8" GYPSED EACH SIDE - TAPE & FINISH TO MATCH WALL FINISH.
- H. MOUNT REUSED COUNTER FACE OF METAL STUD WALL w/ (1) LAY 3/4" PLYWOOD.
- I. POWER / PHONE / DATA. PROVIDE PULL STROKE IN PHONE / DATA CONDUIT. PROVIDE 1" DIA CONDUIT TO UTILITY CLOSE FOR PHONE / DATA JACKS
- J. FRAME GAP w/ METAL STUDS, 3/4" PLYWOOD LOBBY SIDE, 5/8" DRYWALL EACH SIDE - TAPE AND FINISH TO MATCH EXISTING.
- K. USE (N) FRAMED WALL TO RUN ELECT. / PHONE & DATA LINES. PROVIDE 1" DIA CONDUIT FOR PHONE & DATA LINES w/ PULL ROPE.
- L. INSTALL AUDIO LOOPING SYSTEM THAT USES LISTENING UNITS OF PAGE 4.



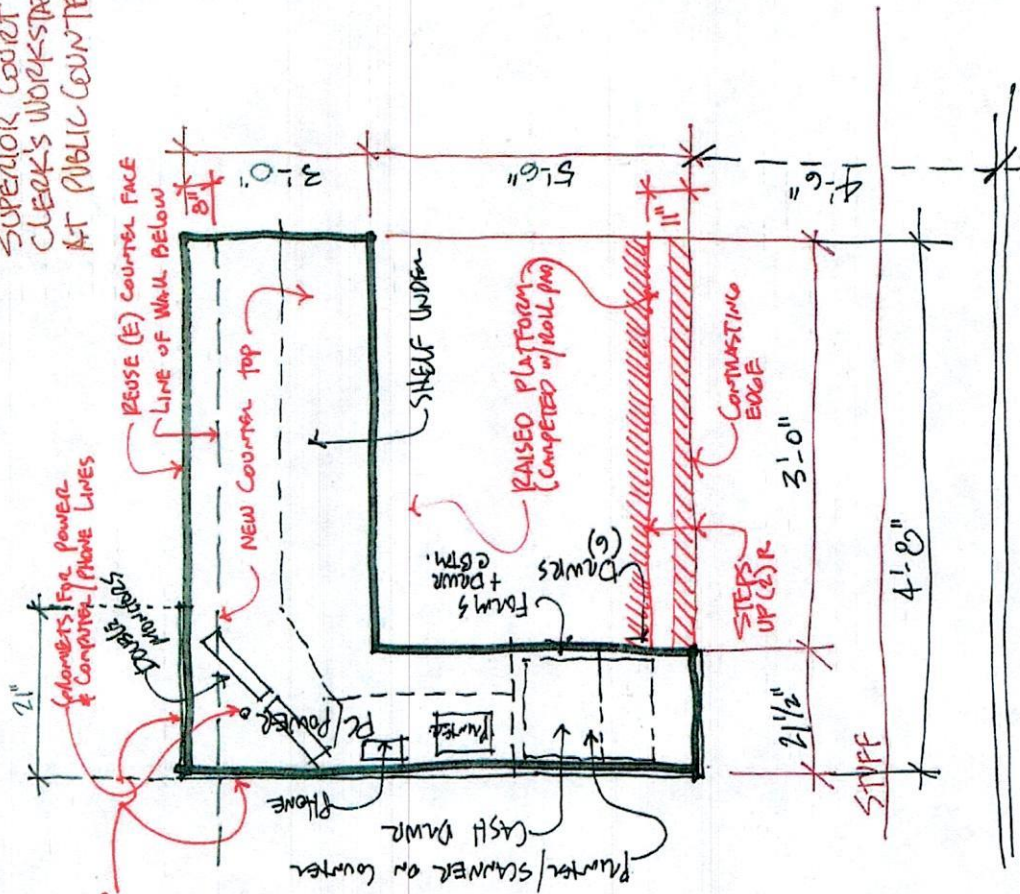
1"=8'-0"

SUPERIOR COURT CLERKS
SECURE MAIN COUNTER
SANTA BARBARA COURTHOUSE - SECOND FLOOR

OFFICE OF THE COUNTY ARCHITECT
ROBERT COOLEY, FAIA - COUNTY ARCHITECT
MAY 27, 2017

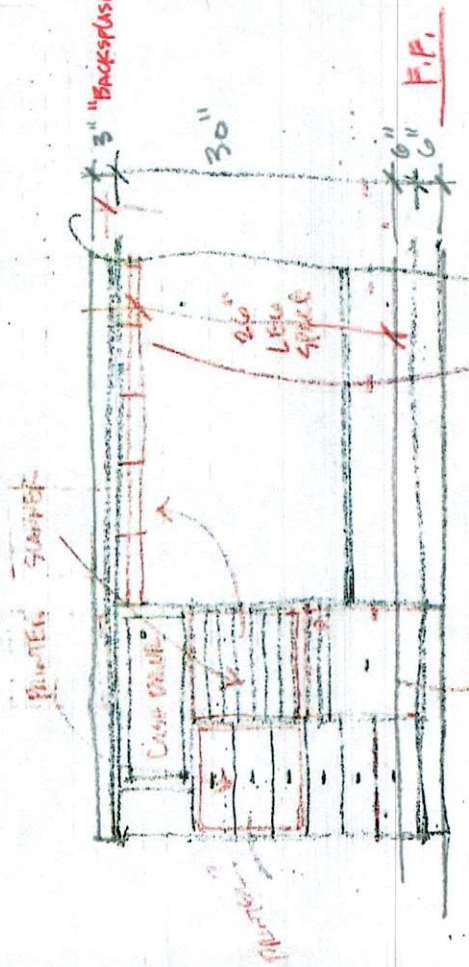
EXISTING

SUPERIOR COURT
CLERKS WORKSTATION
AT PUBLIC COUNTER

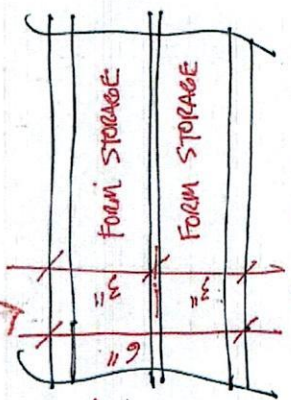


PAGE 2

- BELONGS - FORMS UNDER COUNTER WORKSTATIONS



SUPERIOR
COURT CLERKS COUNTER
SIDE SURFACE ELEVATION



- # of FORMS

WORKABLE? REASON
DOWNER. STIFF



**Norcon TTU@-1X Series
Installation & Operating
Instructions**

910 Bushside Ave.
Inwood, NY 11066
Tel. 516 229 0000
Fax. 516 229 8915
www.norcon.com

• Introduction	1
• Features	1
• How It Works	2
• How To Install	3-4
• How To Use The Talk-Thru Communicator	5
• Operation Hints	6
• Specifications	7
• Accessories and Options	8
• TTU@-1X Series	11
• Norcon TTU@-7X Series	12
• Troubleshooting	13
• Warranty	14

Installation Instructions:

Remove the four (4) 8-32 assembly screws. Separate the housing and electronics assembly. Unplug electronic assembly from the facelplate and housing.

Fit the electronic assembly into the cavity.

Remove the four (4) 8-32 mounting nuts from the mounting rods. Separate the facelplate and housing. Discard the shipping spacers located between the facelplate and housing if there are any. Hold the facelplate over the partition opening. Carefully center the facelplate and align the fasteners horizontally. Masking tape can be used to temporarily hold the facelplate to the outside of the partition.

On the inside of the partition mount the housing over the four (4) 8-32 mounting rods. Be certain to position the housing so that the threaded hole is positioned properly. If using tubing, orient the hole in the direction which the tubing is to exit (left, right, top, and bottom). If tubing is not being used, place the plugged hole at the bottom.

Recommended cables for wiring:

For power connections use **Wheat Penn wire #221**. This is a stranded single pair 22 awg. Plention 41 jacket 19mm cable. Keep microphone and power cable bundles away from other power cables.

For power connection, route the one pair cable (with the connector on one end). From the inside unit to the location of the PS-1 power supply. Connect the conductors to the power supply (RED to +ve, BLACK to -ve). Plug the connector to its mate from the printed circuit board. Connect 4-pin polarized connectors and reassemble units.



Place the housing so that the threaded hole can be positioned properly. If using tubing, orient the hole in the direction in which the tubing is to exit as shown in the drawing.

Be certain to position the housing so that the threaded hole can be positioned properly. If using tubing, orient the hole in the direction which the tubing is to exit.

HOW TO USE THE TALK-THRU COMMUNICATOR...

1. With power switch off, Turn Talk and Listen controls completely counter clockwise.
2. Turn on the unit by switching the Power CHOFF switch to its upper position. At this position, the unit is at the auto mute mode.
3. Adjust the TALK volume control until the attendant is clearly heard by the person outside the window when the attendant is speaking 2" to 4" from the gooseneck microphone at a normal speaking level. The green LED should go on when the attendant starts talking and go off when the attendant stops talking. If the green LED stays lit constantly, it indicates either the TALK volume setting or the ambient noise is too high.
4. Adjust the LISTEN control until the person outside the window is clearly heard when speaking at a normal level.

TTU@-1X Series 2-Way Talk-Thru Electronic Communication System

A voice communications system for High-Security and Isolation Booth Situations. In today's security conscious environment, Isolation Booths are often the ideal recourse to protect your employees. But does it facilitate and help maintain your very important public image? Not if clerks and customers have to yell and repeat themselves to be heard or understood. Here's the solution: Norcon's Patented TTU@-1X Talk-Thru Communicator. It is a 2-way, hands-free audio system that provides high-quality personal communication between people separated by security or isolation barriers. It's the most widely used system of its type in the U.S., and the world.

FEATURES

- Clear 2-way hands-free voice communication.
- Quality electronic design and engineering.
- Avoid raising your voice, repetition & misunderstanding.
- XLR removable mic for your convenience.
- Simple, one-person installation.
- Rugged, tamper-resistant materials. Anodized aluminum.
- Self-powered with fast rechargeable battery option.
- Bullet-resistant option (UL Level 3).
- Units available for ADA applications.
- Headset jack equipped on all models. Headset can be ordered separately.
- Export models available.

HOW IT WORKS ...

The Norcon TTU@ system permits hands-free, 2-way communication between the booth attendant and the customer. Unique circuitry facilitates engaging, clear, 2-way conversation at all times - as if the two parties were together in the same room. The TTU@-1X Talk-Thru Communicator now incorporates circuitry to automatically attenuate the outside channel, if the gooseneck microphone is not used for a period of 30 seconds, the outside channel volume will be reduced approximately 70%. Normal operation is restored as soon as the attendant speaks into the gooseneck microphone. The automatic volume attenuation circuit prevents outside noise from bothering the attendant.

The TTU@-1X provides clear communication even in environments with high ambient noise by shaping the sound for maximum intelligibility. Its compression circuitry decreases loud, annoying sounds.

HOW TO INSTALL ...

Installation of the TTU@-1X is a very simple, one-person operation. All that's needed is a 3" to 4" diameter hole in the barrier. Four fasteners and two rubber gaskets for mounting are supplied. The front face and housing are easily mounted on opposite sides of the barrier using the fasteners. The rubber gaskets prevent shrapnel and protect the barrier surface. The electronic section is then inserted into the housing and fastened in place.

SPECIFICATIONS:

- MECHANICAL:**
- Outside facelplate: Aluminum, anodized finish, tamper-resistant.
 - Control housing (interior): Machined aluminum, anodized finish, tamper-resistant.
 - Size: Outside facelplate 5" Dia. x 10" D. Inside control housing: 3" Dia. x 2-1/2" D (TTU@-1 AX) (TTU@-1 AX); 5" Dia. x 3-1/2" D (TTU@-1 O X) (TTU@-1 OX)
 - Weight: 5.1 lb.
 - Mounting: Partition hole 3 to 4" Dia. (3-1/2" recommended). Specially barrier thicknesses when ordering. Holes will adjust the length of the mounting rods to meet your need.
 - Panel Controls: LISTEN volume, TALK volume, POWER On/Off, AUTO MUTE On/Off.
- ELECTRONIC:**
- Audio frequency response: Selectively shaped for maximum voice intelligibility.
 - Audio power: 2 watts per amplifier.
 - Distortion: Less than 2%.
 - Listen mode: 20dB compression.
 - Microphone: Electret.
 - Power Supply Adapter: Input: 90-240V AC, 60 Hz. Output: 15V DC, 1A. UL, (Canada and US) CE, level V1.
- Specifications are subject to change without notice.



TTU@-1A, XLP, P, 1

TROUBLESHOOTING:

- You may occasionally encounter a problem with your TTU@ system. If this happens, refer to the trouble shooting list. If additional help is needed, please contact us.
- No sound at all
 - Is the power cable properly connected to power supply and the power supply plugged into a working outlet?
 - The power cable red wire should be connected to (+) and black wire connected to (-) the power supply. The power supply should have been plugged into a working outlet.
 - Is the TALK volume setting too high?
 - Is the TALK or LISTEN volume turned too high? Set the volume control to a proper level. In most cases, both TALK and LISTEN controls should be set to the position of around 11 to 12 o'clock. Conversation cutting-off and breaking-up
 - Is the TALK volume setting too high?
 - Turn down TALK volume to a proper level. Make sure the green LED is off when not talking to the gooseneck microphone.
 - Is the attendant talking too far from the gooseneck microphone?
 - The ideal distance is 3" to 4" from the gooseneck microphone.
 - TTU@-1 OX does not work when operated by internal battery.
 - Are the batteries fully charged?
 - If the unit is newly installed, allow the batteries to be charged for 10-12 hrs. before operating. The unit can be used while the batteries are being charged.
 - Is the battery charger plugged into a working outlet?
 - If the battery charger is plugged into a working outlet, and the batteries are being charged, the battery charger should be warm. If it is not, the battery charger may be defective.

TTU@-1X Series:

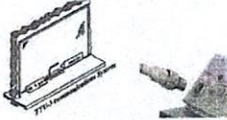
- Select from available models with detachable XLR mic.
 - TTU@-1AX continuous power unit.
 - Housing 5" Dia x 2 1/2" depth.
 - TTU@-1AWX Wireless ready.
 - TTU@-1AXX same as TTU@-1AX, but with bullet-resistant option (UL Level 3).
 - TTU@-1ACX same as TTU@-1AX without gooseneck microphone for headset use only.
 - TTU@-1DX Battery operated unit. Complete with rechargeable batteries and charger. Housing 5" Dia x 3 1/2" depth.
 - TTU@-1OXX same as TTU@-1CX, but with bullet-resistant option (UL Level 3).
- Talk-Thru systems are shipped complete with cables, instructions, at power supply.



TTU@-1DX (battery version)

Introducing the Norcon TTU@-3X Series:

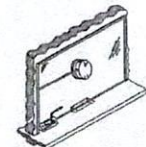
There are times, when it is inconvenient to cut a 3" to 4" hole through an isolation barrier, the Norcon TTU@-3X is the solution for this situation. The TTU@-3X is a pair of 6" or 12" prism-shaped units for mounting on a window pane on both sides of a barrier. They allow hands free communication through barriers typically found in banks, cashier's booths, information booths, and similar environments. Norcon provides individual, communications, and secure talking solutions for critical applications around the world. TTU@-3X with removable mic for your convenience.



9

Introducing the Norcon TTU@-7X:

Special design for the window with a secure pull-down gate or shade. In some cases, when it's impractical to mount the inside control section of the TTU@-3X in a window with secure gate or shade the TTU@-7X is your choice. The TTU@-7X incorporates the same high quality electronics as the basic TTU@-3X, but with a 1" low profile window mount section, and a prism shaped counter mounting control section.



10

Introducing the Norcon TTU@-1 NCX:

When using a talk-thru unit in a noisy area such as heavy traffic street, a crowd noise theater hall way or a gas station, the noise makes the conversation difficult. A powerful DSP inside the Norcon noise cancellation unit samples an ambient noise environment and attenuates the noise around the desired speech signals. As a result, continuous and repetitive noise is removed, a clear conversation will be even with a passing truck in the background. To take the advantage of this new technology, the existing unit can be sent to us for upgrade.

Accessories for TTU@:

- ANC 700 Headset (Optional) for use with regular non RF ready units TTU@-NCHS
- Superior sound quality
- Noise Cancellation microphone
- Long wearing comfort



11

Professional Wireless Headset System (Optional)

for use with regular non RF ready units TTU@-WHS:

- Mobile, DECT 6.0 technology hands-free mobile design with range of up to 300 feet from base unit
- Duo-Side Headset: Adjustable for over-the-head stability or over-the-ear convenience with new comfortable ear loop
- Extended Use: Ten hours continuous talk time on rechargeable battery.



Headset (Optional for use with wireless ready TTU@-1X, TTU@-3X & TTU@-7X Series)

- TTU@-WHS-D wireless headset transmitter
- Norcon TTU@-NC181 Headset
- USB Charger & Micro USB cable

12

Professional Wireless Headset System (Optional)

TTU@-WHS-D: Wireless Headset is designed to work with the TTU@-WHS ready unit only.

- Clear 2-way hands-free voice communication.
- Quality engineering and innovative design.
- Walk around freely while talking to the customer.
- Self-powered unit with rapid rechargeable battery



Microphone Grill Windscreen Sponge

- Specification:**
- Material: Foam. Color: Black.
 - I.D. Approx. 12mm. Size: Approx. 65x10mm (LxW)
 - High elasticity, durable and soft. Replacement for your worn-out or lost headset microphone pads.

Package Include:
6 pcs of Microphone Windscreen



13

Service Policy

TALK-THRU SYSTEM WARRANTY REPAIRS

Norcon Communications Inc. warrants the products Manufactured by Norcon to be free from defects in material and workmanship for a period of one year* from the date of shipment from the factory provided:

- 1) The product has not been abused, misused or improperly maintained, repaired and/or modified during such period, and
- 2) Such defect is not a result of voltage surges, lightning, water damage, flooding, fire, explosion, earthquakes, tornadoes, acts of aggression, Acts or similar phenomenon, and
- 3) The product has been properly installed according to the appropriate Norcon Installation Guide.

Both incoming and outgoing freight charges are at customer's expense. Domestic repair will be returned to customer by UPS Ground. International repair will be returned to customer using normal shipping arrangements. Any other shipping instructions must be in writing and will be at the customer's expense.

- Extended two years warranty available on request

This document can be downloaded at

www.norcon.com

14

PAGE 32

Norcon: TTU- WHS-D



Products > TTU-WHS-D wireless headset

Overview
 Norcon's TTU-WHS-D is designed to work with Norcon's TTU-WR Wireless ready unit only

Features

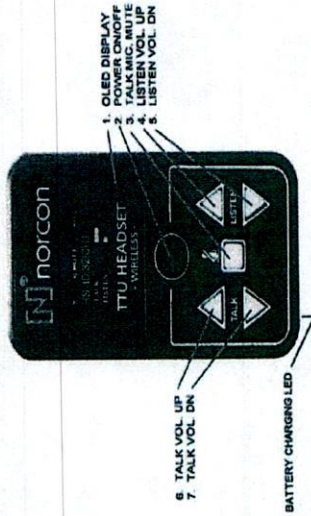
- Clear 2-way hands-free voice communication.
- Professional headset with monaural earpiece and flexible boom microphone.
- Quality engineering and innovative design.
- Walk around freely while talking to the customer.
- Self-powered unit with rapid rechargeable battery.
- Battery level display and charging complete LED indicator.

Click here for installation and operation manual



Request information about the TTU-WHS-D

Specifications are subject to change without notice.



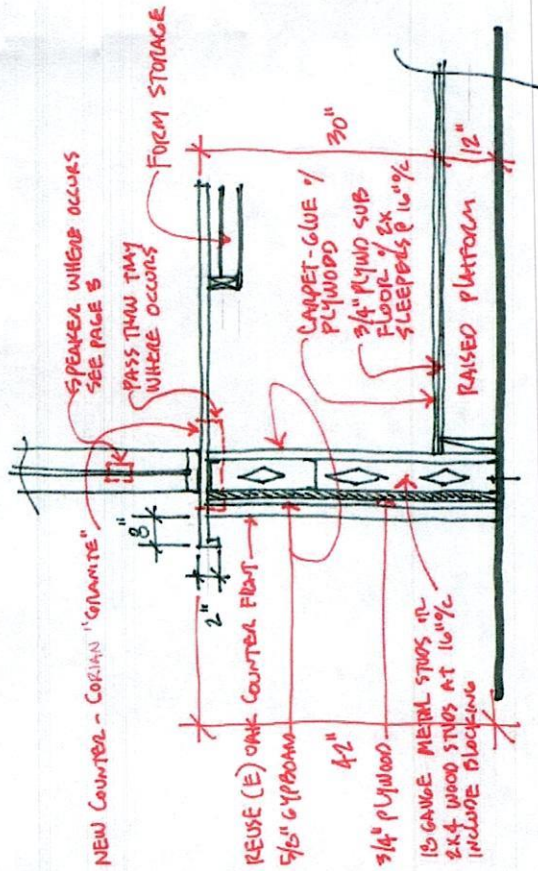
1. OLED DISPLAY
2. POWER ON/OFF
3. TALK VOL UP
4. LISTEN VOL UP
5. LISTEN VOL DN

6. TALK VOL UP
7. TALK VOL DN

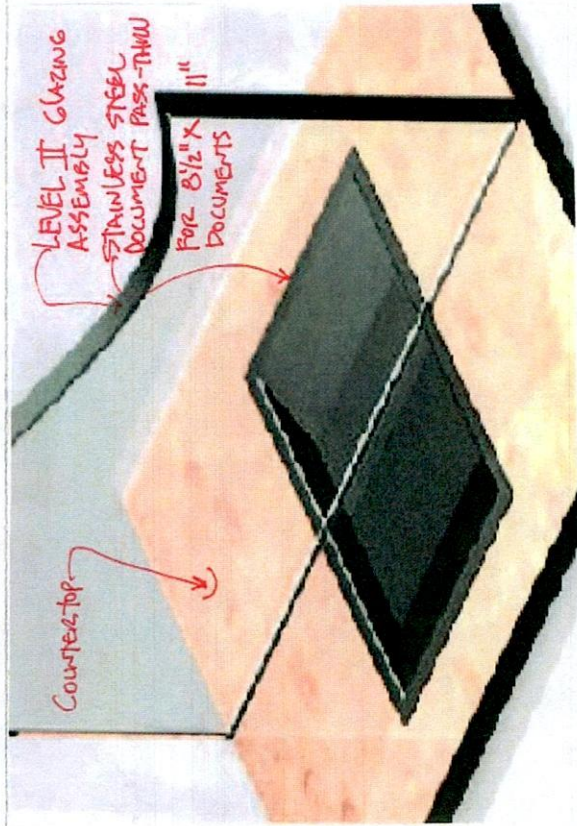
BATTERY CHARGING LED

Products | Contact | Support | About | Other Services
 (516) 238-0300 | info@norcon.com

<http://www.norcon.com/ttu-whs-d.htm>



1 TYPICAL COUNTER



2 DOCUMENT PASS-THRU