

ATTACHMENT A

Quinn Company Equipment Consignment Agreement and

Back-up

EQUIPMENT CONSIGNMENT AGREEMENT

I/We authorize Quinn Company to sell the equipment listed below for a minimum sum which will net me/us \$ 53100 of final proceeds. Asking Price: \$ 59000

Year: 1985 Make: Cat Tier Level: 0

Model: D6D Serial Number: 04X10531 EIN Number: N/A

Contact name/number for machine location if not at Quinn Company: Mark Linane 805-252-2808

Hours** 4,636 Financed by: N/A Amount Owed: N/A

Machine description: D6D track type tractor, as inspected per report #10006738.

It is agreed that following consummation of a sale, Quinn Company will deduct a commission of **10%** of the gross sale price executed, netting us no less that the final proceeds noted above. Net proceeds exclude taxes and costs of all authorized and warranty repairs unless otherwise agreed upon between the parties in writing.

This is an exclusive sales agreement which will remain in effect for ninety (**90**) days and will terminate five (**5**) days after receipt of written notice from either party subject to any prior consignee commitments of sale. Signing of this document also guarantees clear title to seller upon completion of a sale contract.

It is seller's responsibility to keep equipment insured against damage, destruction and loss of every kind while the goods are in possession of Quinn Company and seller further agrees to hold Quinn Company harmless for any such loss or damage whatsoever while the equipment is in the care or custody of Quinn Company.

Seller: Santa Barbara County Fire Dept Any DBAs: _____

Address: 4410 Cathedral Oaks Rd City/State/ZIP: Santa Barbara, CA 93110

Signature: _____ Print Name: _____

Phone: _____

Date Accepted: 12/08/2022 Quinn Representative: *David J. Burt*

WE ARE CARB COMPLIANT – 2448 (J) Disclosure of Regulation Applicability "When operated in California, any off-road diesel vehicle may be subject to the California Air Resources Board In-Use Off-Road Diesel Vehicle Regulation. It therefore could be subject to retrofit or accelerated turnover requirements to reduce emissions of air pollutants. Please view the 'FINAL REGULATION ORDER FOR IN-USE OFF-ROAD DIESEL VEHICLES' at <https://www.arb.ca.gov/msprog/ordiesel/ordiesel.htm>.

INTERNAL ONLY			
ID#: <u>CU</u>	Inspection Date: _____	Vendor Set-Up: _____	R-DBS _____
UCC Search: _____	UCC Clear: _____	Arrived: _____	Sold: _____
Ask Price: _____	BoSale Sent: _____	BoSale Rec'd _____	Review: _____

** Hours are subject to change

1985 CATERPILLAR D6D TRACK TYPE TRACTORS

INSPECTION DETAILS

Inspection Type	Consignment
Inspection #	10006738
Inspection Status	Reviewed
Created	11/11/22 12:40:23
Updated	11/11/22 13:46:24
Created By	Molezzo, Gary
Inspector	Molezzo, Gary
Reviewers	Molezzo, Gary
Salesperson	Bates, Jacob
Transmission Serial #	2HA07986
Engine Serial #	08Z30508
Serial #	4X10531
SMU / Hours	4,636
Location	LOS ALAMOS , CA, United States



CLIENT DETAILS

Name	
Company	SANTA BARBARA-FIRE DEPT.
Address	
City	LOS ALAMOS
State	California
Country	United States
Postal Code	
Email	
Phone	

FEATURES

- AIR CONDITIONER
- ENGINE ENCLOSURES
- LIGHTING
- SLOPER
- WINCH
- BLADE, S
- EROPS
- PILOT CONTROL
- SWEEPS
- BLADE, SINGLE ANGLE TILT
- HAND AND FOOT CONTROL
- SCREENS
- ULTRA LOW SULFUR DIESEL FUEL

CONDITION

●●● Good

●● Fair

● Poor

Approved Repair

GENERAL APPEARANCE

●●● Battery Box

●●● Belly Pans

●●● Cab or Canopy
TOP BOLT LEAKS WATER & SIDE WINDOW LEAKS WATER SOME RUST AT WINDOWS SEALS.SAFE-CAB WELD ALL SCREEN BRACKET ON ROPS. SAFE-CAB # 35290-3/94 CAB

● Decals
NEEDS ALL DECALS.

●●● Engine Enclosures

●●● Fenders

●●● Fuel Tank

●●● Grab Irons

●●● Guards
SLOPER COMES WITH MACHINE ONLY. NUMBER 36189 ATECO

●●● Hood

●●● Main Frame Welds

●●● Paint

●●● Pre-Cleaner Bowl

●●● Radiator Grill

●●● Screens

●●● Sheet Metal
CAB DOOR CRACK AT LATCH BOTH SIDE. LT DOOR WITH RUST HOLES AT BOTTOM.

●●● Steps / Ladder

●●● Sweeps

●●● Transmission Guard

YES Cleaning Required
SOME

YES S.O.S. Taken
ENGINE & TRANSMISSION

Notes - GENERAL APPEARANCE
GOOD

SAFETY ITEMS

●●● Back Up Alarm

● Horn
INOP

●●● Parking Brake - SAFETY ITEMS

●●● Safety Locks / Pins

● Seat Belt / Date
OLD DATE.

YES ROPS
LT. SIDE 2 MOUNTING BOLTS
BROKEN OFF ROPS.

NO ROPS Certification Plate

YES Safety Decals In Place / Legible

Notes - SAFETY ITEMS
OK

GAUGES, OPERATOR STATION, CONSOLE

●● Air Conditioner
TEMPER AT 50

●●● Dash Console

●●● Door Latches / Seals

●●● Floor Boards / Mats

●●● Gauges

●●● Glass/Mirrors

●●● Headliner
BOLTS LEAKS WATER

●●● Heater

●●● Interior Lights

●●● Meter Replaced / Working
NEEDS METER1728

●●● Seat Cushion / Arm Rest

●●● Seat Suspension Type /
Condition
SPRING TYPE

●●● Switches

●● Windshield Wipers

NO Current O&MM

NO Current Parts Manual

NO Current Safety Manual

Notes - GAUGES, OPERATOR
STATION, CONSOLE
GOOD

ENGINE

●●● Air Cleaners

●●● Anti-Freeze Color / Level
RED

●●● Engine Supports

● Exhaust / Muffler / Stack
BOLTS & STUD BAD ALL RUST
OFF

●●● Fuel Injection System

●●● Governor / Control

●●● Operating Condition - ENGINE

●●● Turbocharger / Blower

NO Blow By

NO Compression in Radiator

NO EPA Decal Legible

YES Fluid Levels OK?
TRANSMISSION & ENGINE
OVER FULL [OK]

NO Knocking

NO Oil Leaks

NO Pre Lube System

NO Water in Oil

Notes - ENGINE
OK

Oil Pressure (H/L/N)
OK

Smoke Color (B/D/L/W)
OK

COOLING SYSTEM

●●● Belts / Pulleys - COOLING
SYSTEM

●●● Coolers

●●● Fan

●●● Fan Drive / Type

●●● Hoses

●●● Radiator

●●● Shroud / Guards

●●● Water Pump

NO Folded Core Radiator

NO Leaks - COOLING SYSTEM

NO Modular Radiator

NO Sand Blast Grid

YES Standard Radiator

Notes - COOLING SYSTEM
GOOD

ELECTRICAL, STARTING AND CHARGING SYSTEM

●●● Alternator

●●● Batteries / Cables

●●● Starter

●●● Wiring

●●● Work Lights
SOME LIGHT OFF MACHINE.

NO Active Codes

NO Block Heater

NO Ether Aid

NO Jump Start Terminal

TRANSMISSION

●●● Case

●●● Controls - TRANSMISSION
CHECK ADJUSTMENT BETWEEN
SAFETY LEVER &
TRANSMISSION SHIFTER

●●● Cooler

●●● Lines / Fittings - TRANSMISSION

●●● Operating Condition -
TRANSMISSION

●●● Pump - TRANSMISSION

●●● Seals

●●● Temp / Pressure Gauges

●●● Torque Converter (Stall Speed)
WILL STALL IN FRIST GEARS
MAYBE LOW ON POWER
NORMAL WILL PULL
THROUGHT BRAKES IN 1 GEAR.

●●● Transmission - Forward Shifts

●●● Transmission - Reverse Shifts

●●● Valves

NO Auto Shift

NO Hydrostatic

NO Leaks - TRANSMISSION

NO Multi Velocity Shift Program

YES Powershift

NO Traction Control

NO Transmission - Noisy

Notes - TRANSMISSION
OK

STEERING

●●● Steering Clutch

●●● Steering Linkage

●●● Steering Operating Condition

●●● Steering Valve

Notes - STEERING
GOOD

BRAKE

●●● Parking Brake Operation

●●● Service Brake Operation

Holding What Gear?
ALL GEARS

Notes - BRAKE
OK

HYDRAULICS

●●● Control Linkage - HYDRAULICS

●●● Hose Lines
THEY REPLACE HOSE TILT

●●● Hydraulic Valves

●●● Lift Cylinders

●●● Mounts / Yokes

●●● Overall Operating Condition

●●● Pumps

●●● Tank / Sight Glass / Cap

●●● Tilt Cylinder

NO Leaks - HYDRAULICS

Notes - HYDRAULICS
GOOD

BLADE

●●● Back of Blade

●●● Cutting Edge & Bits
CENTER TURN [OK]

●●● Face / Moldboard

●●● Pins

●●● Push Arm

●●● Stabilizer Link

●●● Tilt Arms

●●● Trunnions

Notes - BLADE
GOOD.

UNDERCARRIAGE

●●● Guiding Guard - Left

●●● Guiding Guard - Right

●●● Track Frame - Left

●●● Track Frame - Right

NO Pins & Bushings Turned?

Average Life Remaining -
UNDERCARRIAGE
SREFA TRACKS NOT CAT

Link / Brand / Part Number
0306DOM SREFA TRACKS.

Notes - UNDERCARRIAGE
GOOD.

Notes - UNDERCARRIAGE 1
WITH CAT NUMBER LOOK LIKE WORN
ABOUT 20% RAILS,PADS,ROLLER
CARRIES & SPROCKETS. ROCK GUARD
ON BOTTOM ROLLERS.

Track Shoes Width / Type
20" SHOES.

FINAL DRIVES

●●● Housings, Left

●●● Housings, Right

●●● Planetaries / Differential, Left

●●● Planetaries / Differential, Right

YES Magnetic Plugs Removed &
Checked?
OK

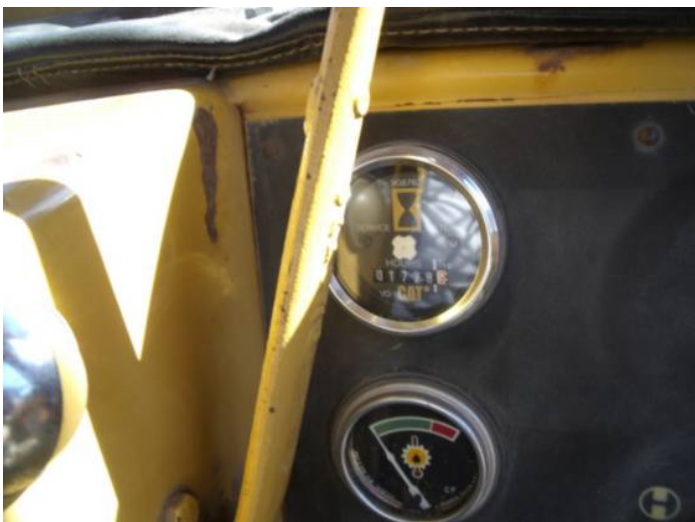
Notes - FINAL DRIVES
OK

COMMENTS, MISC. REPAIRS, GENERAL REMARKS

comment 1
HYSTER W6FP1F7061C48 MODEL
W6FPC DID NOT OPERATE WINCH

comment 2
SLOPER COMES WITH MACHINE NOT
RAKE IN PICTURE.

MARKETING PHOTOS (31)

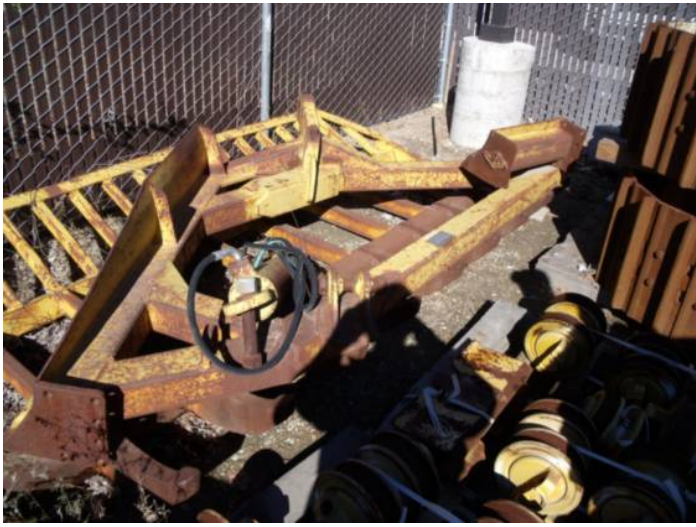








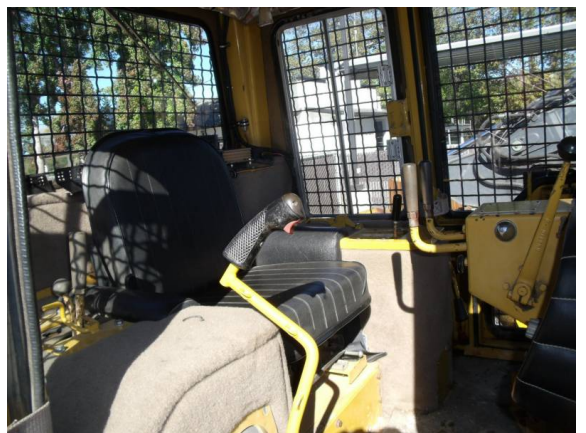
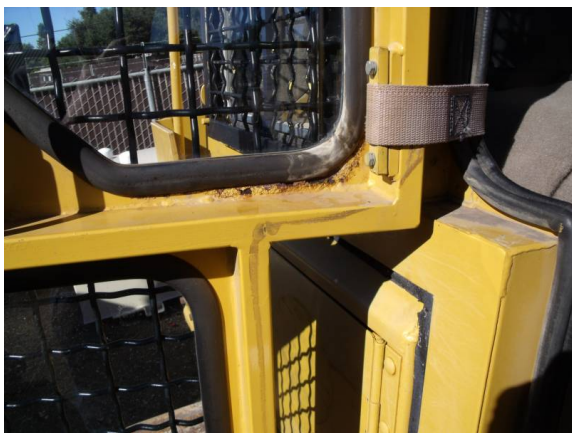




CONDITION PHOTOS (22)

- Cab or Canopy
TOP BOLT LEAKS WATER & SIDE WINDOW LEAKS WATER SOME RUST AT WINDOWS SEALS.SAFE-CAB WELD ALL SCREEN BRACKET ON ROPS.
SAFE-CAB # 35290-3/94 CAB

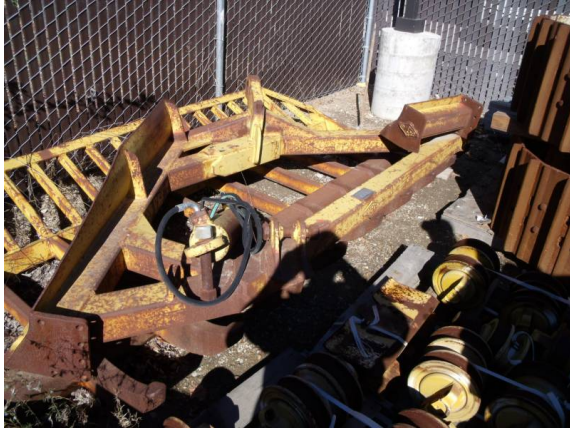






Guards

SLOPER COMES WITH MACHINE ONLY. NUMBER 36189 ATECO



Sheet Metal

CAB DOOR CRACK AT LATCH BOTH SIDE. LT DOOR WITH RUST HOLES AT BOTTOM.



YES

ROPS

LT. SIDE 2 MOUNTING BOLTS BROKEN OFF ROPS.



Exhaust / Muffler / Stack

BOLTS & STUD BAD ALL RUST OFF



Link / Brand / Part Number
0306DOM SREFA TRACKS.



Notes - UNDERCARRIAGE 1
WITH CAT NUMBER LOOK LIKE WORN
ABOUT 20% RAILS,PADS,ROLLER
CARRIES & SPROCKETS. ROCK GUARD
ON BOTTOM ROLLERS.





comment 2
SLOPER COMES WITH MACHINE NOT
RAKE IN PICTURE.

