
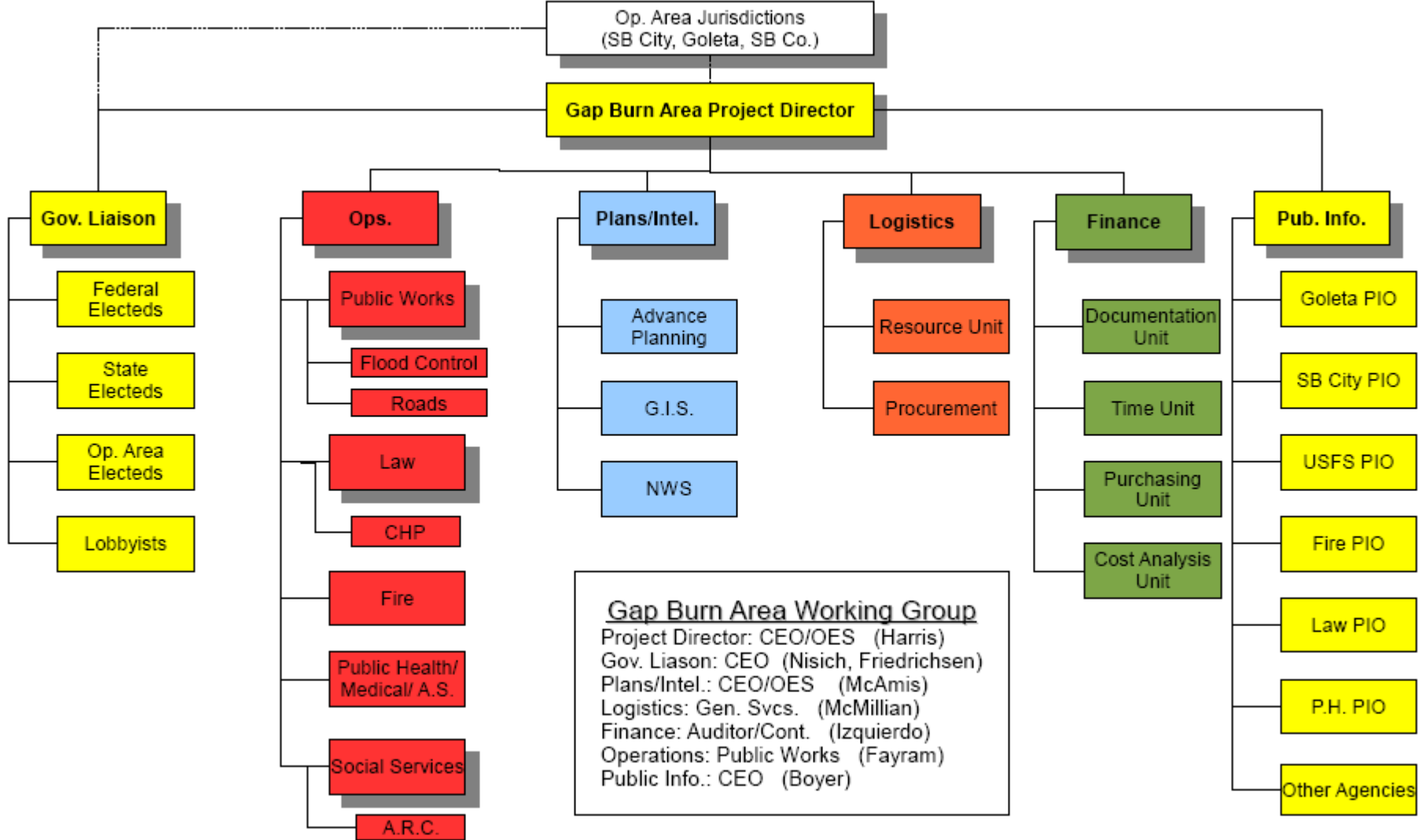


Gap Fire Coordinate Emergency Response Plan

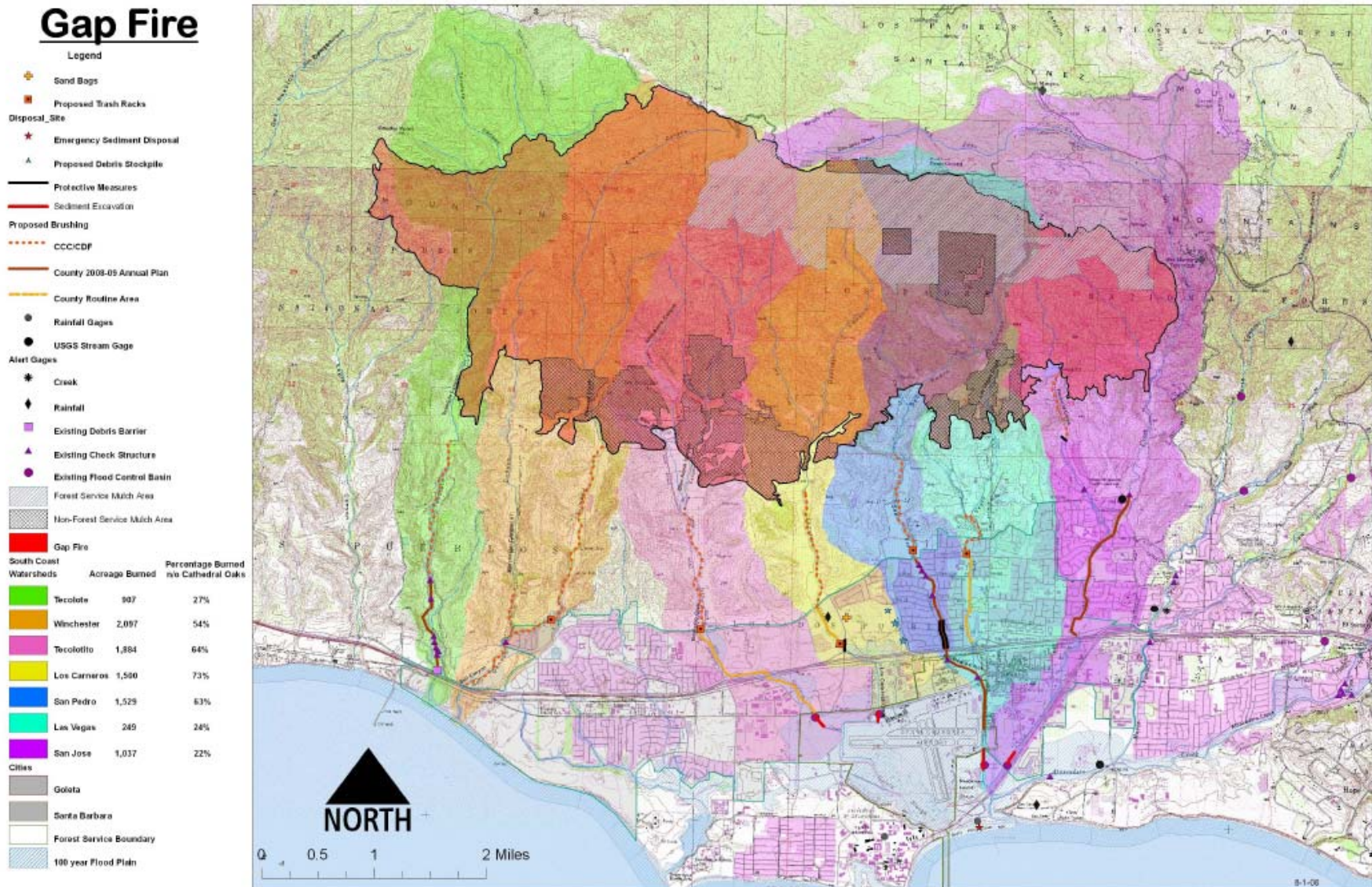


**Santa Barbara County
Operation Area
September 2, 2008**

Gap Fire Operational Area

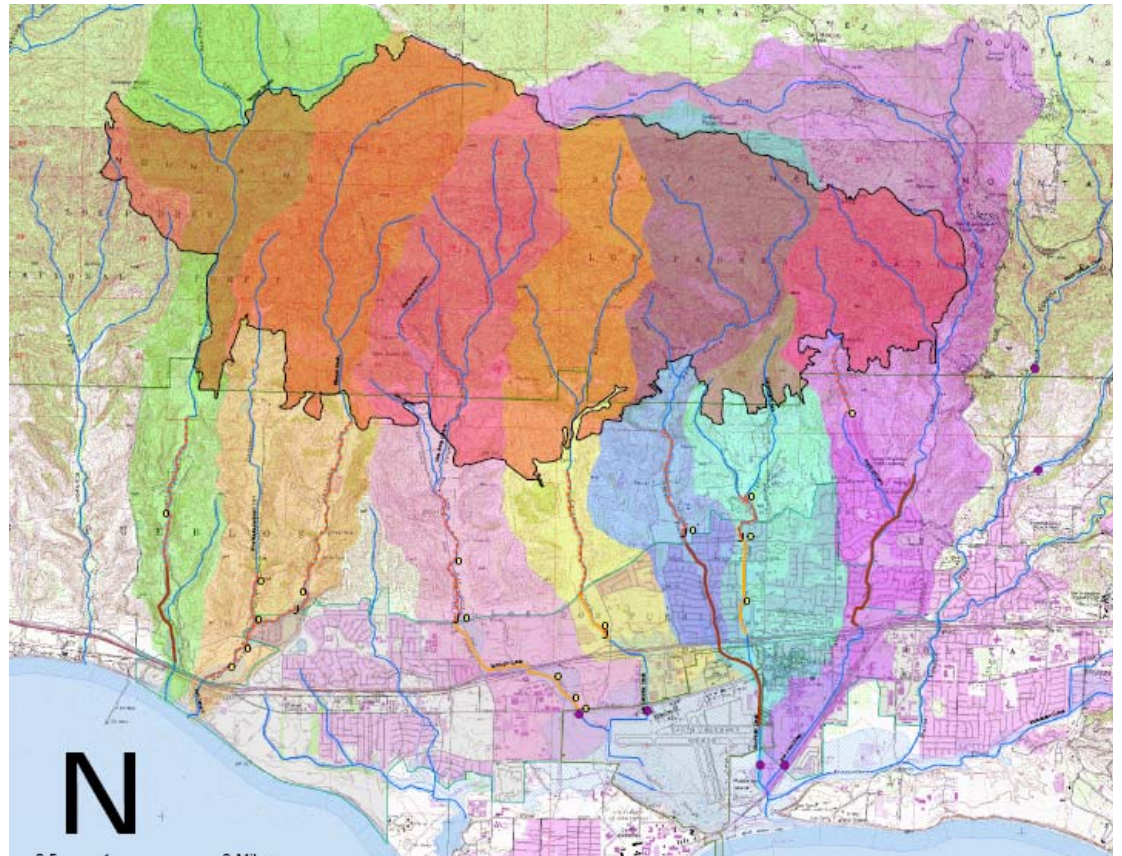


Operations Section Watershed Response Plan



Gap Fire Statistics









- Fire Burned July 1, 2008 – July 29, 2008
- Total Acres – 9,443
- ~ 50% Federal Lands, 50% Non-Federal
- 7 Major Watershed Systems Affected

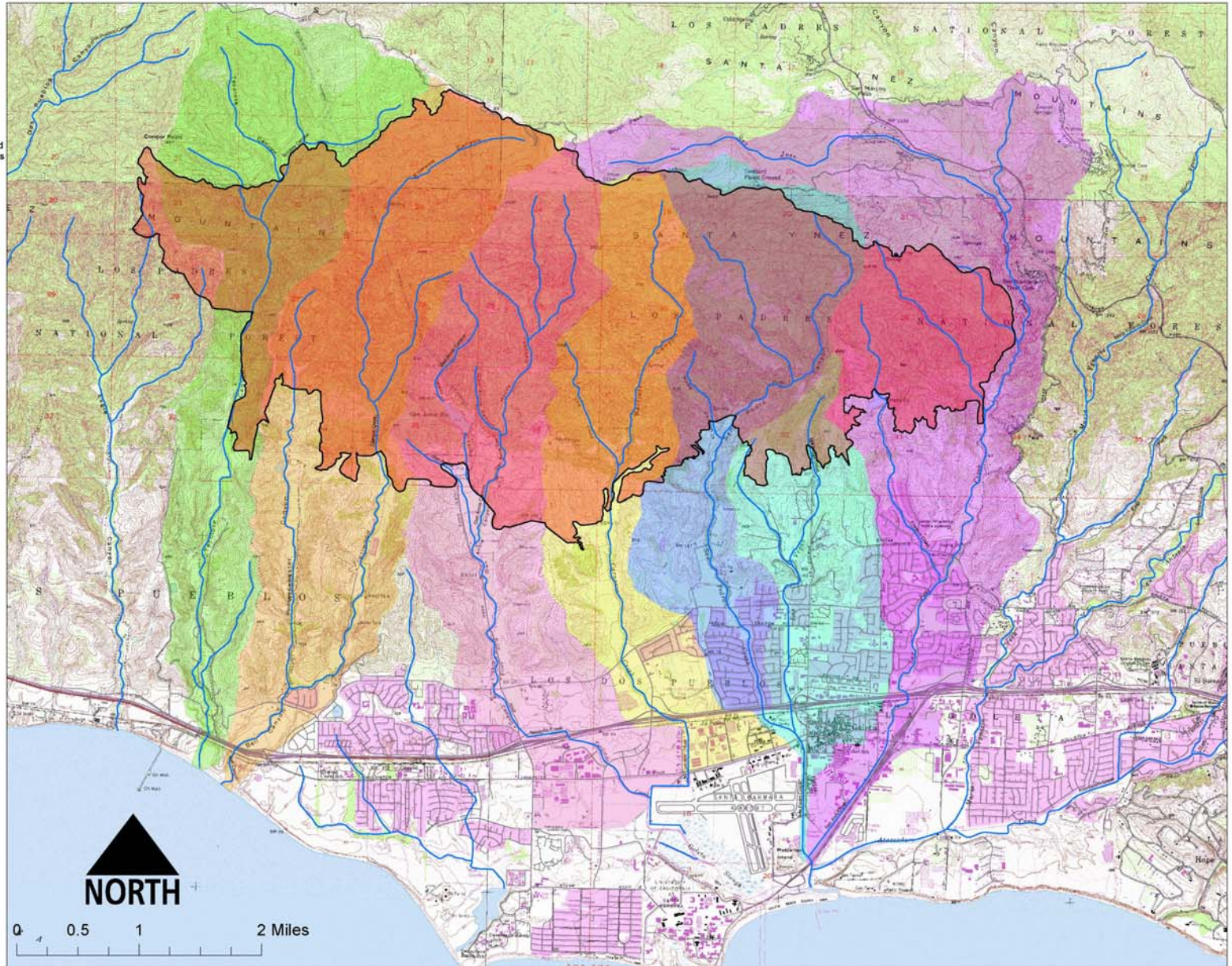


Gap Fire – Affected Watersheds

Gap Fire

Legend









South Coast Watersheds	Acreage Burned	Percentage Burned n/o Cathedral Oaks
 Gap Fire		
 Tecolote	907	27%
 Winchester	2,097	54%
 Tecolotito	1,884	64%
 Los Carneros	1,500	73%
 San Pedro	1,529	63%
 Las Vegas	249	24%
 San Jose	1,037	22%

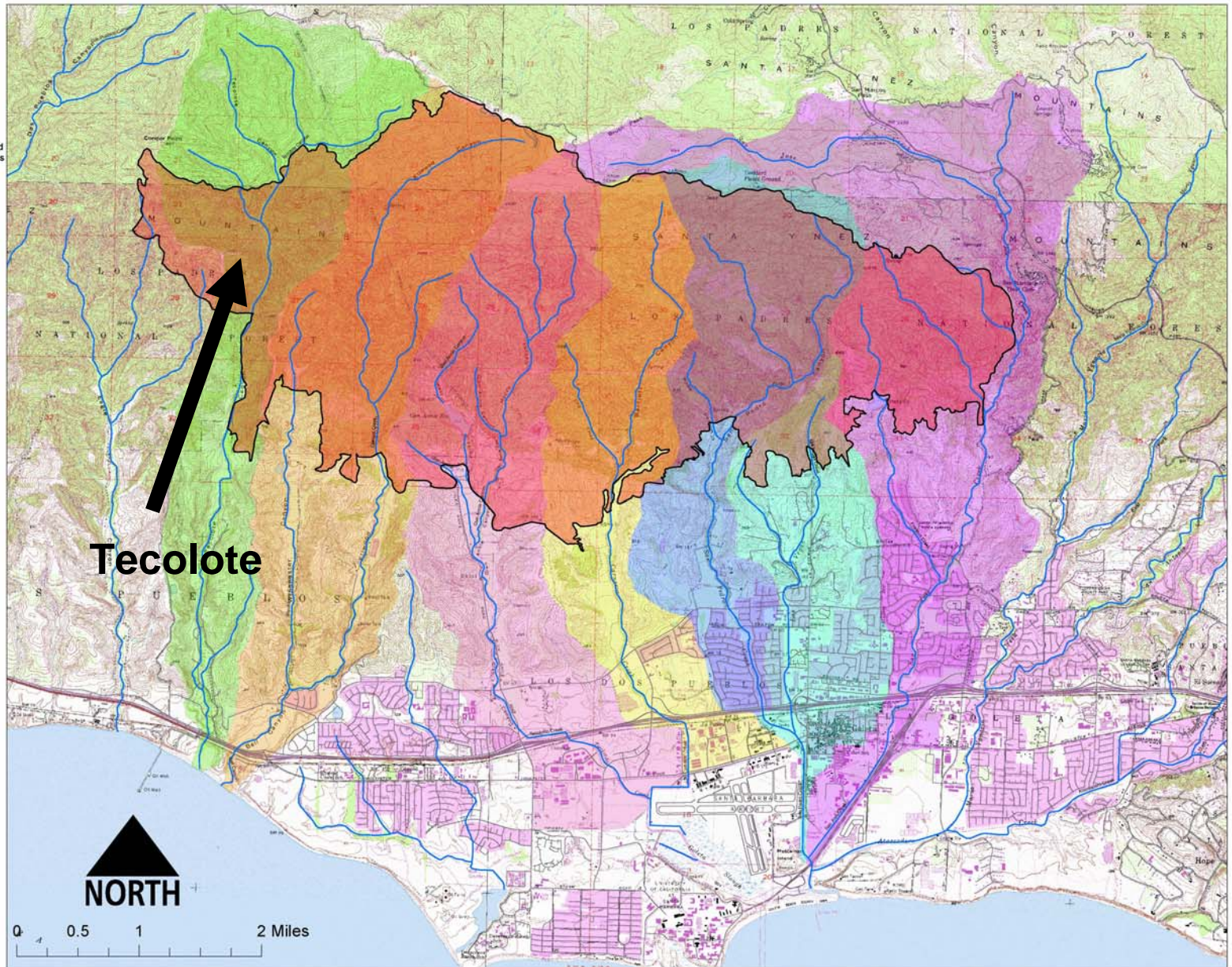


Gap Fire – Affected Watersheds

Gap Fire

Legend









	Gap Fire		
South Coast Watersheds			
	Acreage Burned	Percentage Burned w/o Cathedral Oaks	
	Tecolote	907	27%
	Winchester	2,097	54%
	Tecolotito	1,884	64%
	Los Carneros	1,500	73%
	San Pedro	1,529	63%
	Las Vegas	249	24%
	San Jose	1,037	22%

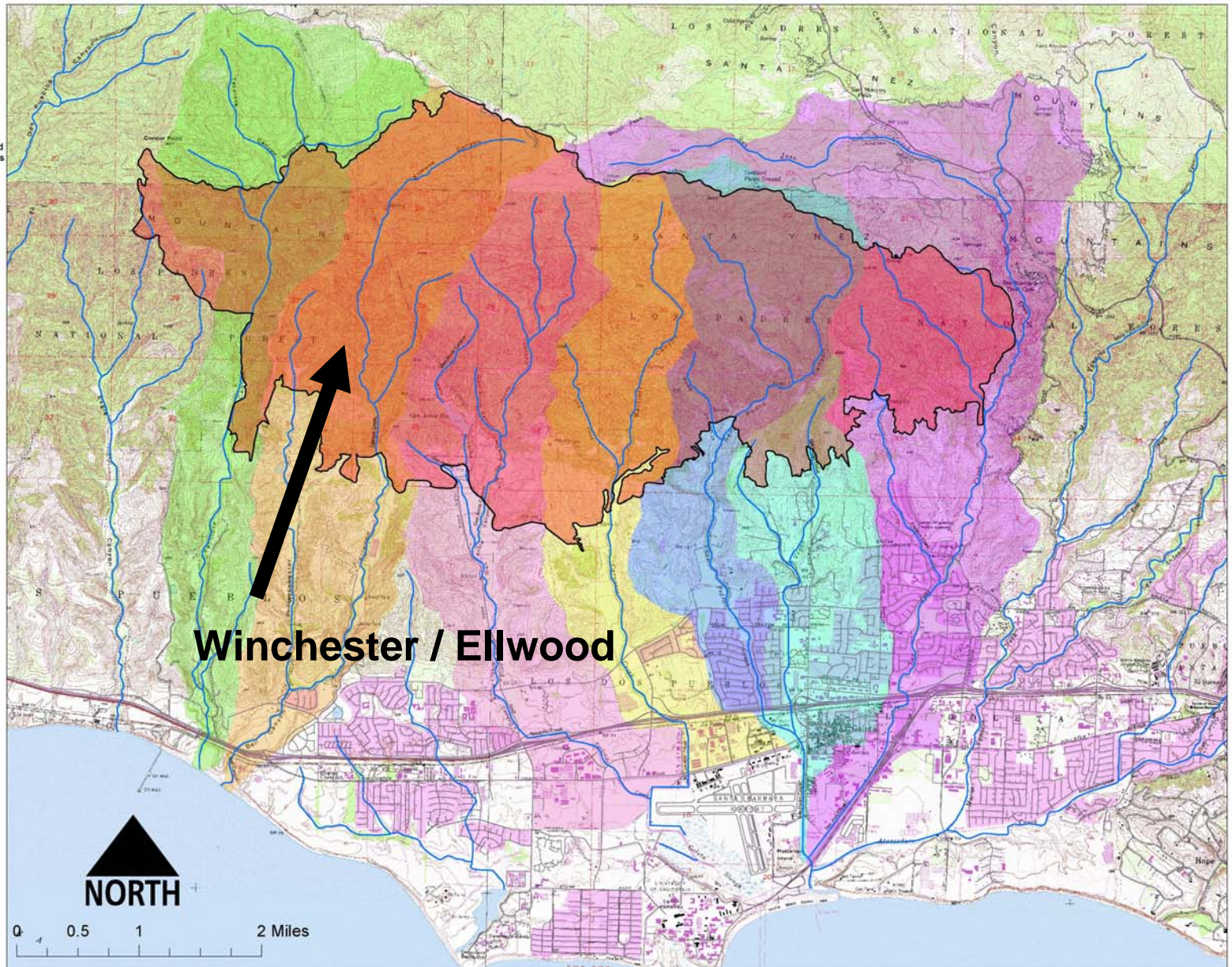


Gap Fire – Affected Watersheds

Gap Fire

Legend









	Gap Fire		
South Coast Watersheds			
	Acreage Burned	Percentage Burned w/o Cathedral Oaks	
	Tecolote	907	27%
	Winchester	2,097	54%
	Tecolotito	1,884	64%
	Los Carneros	1,500	73%
	San Pedro	1,529	63%
	Las Vegas	249	24%
	San Jose	1,037	22%

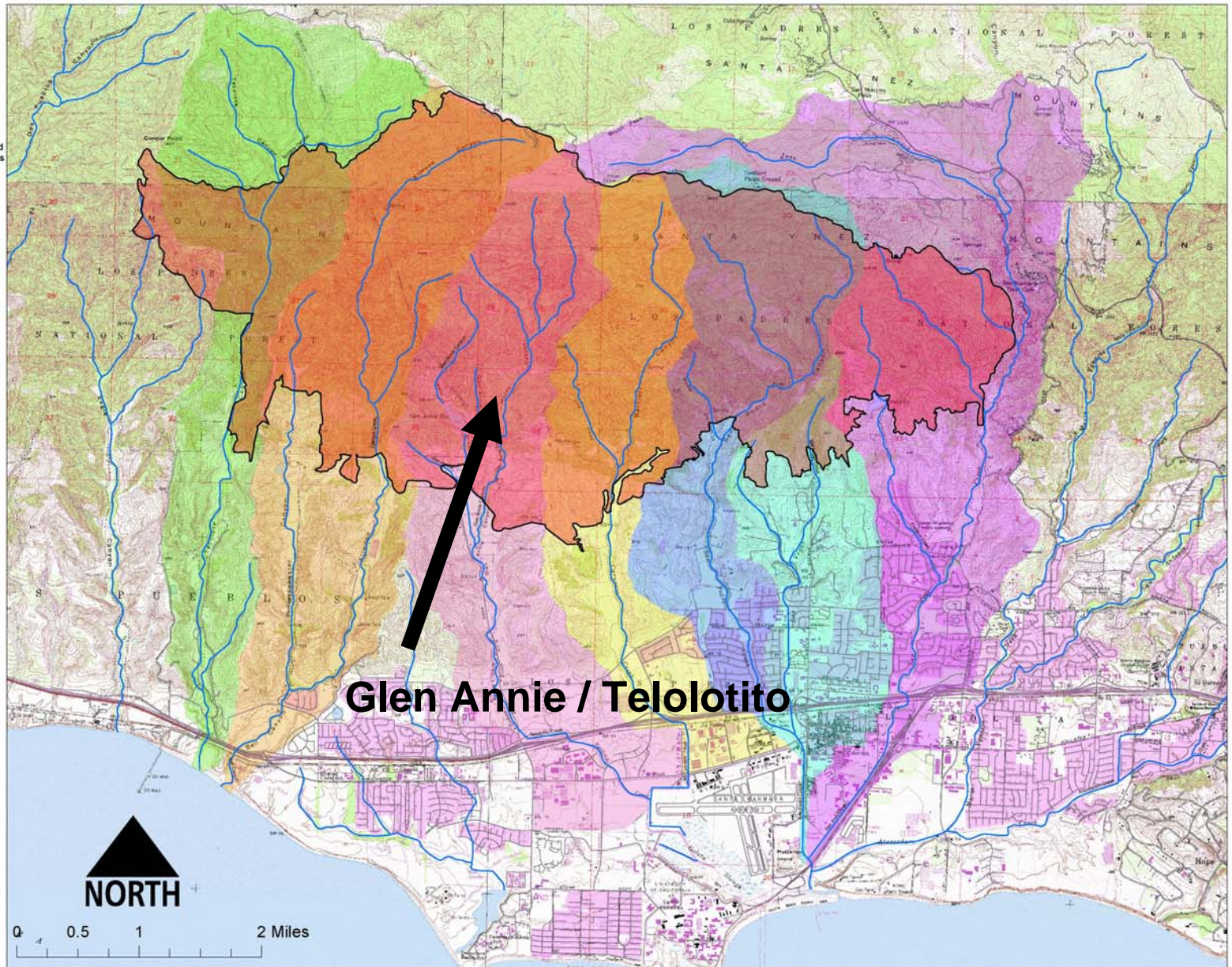


Gap Fire – Affected Watersheds

Gap Fire

Legend









	Gap Fire		
South Coast Watersheds			
	Tecolote	907	27%
	Winchester	2,097	54%
	Tecolotito	1,884	64%
	Los Carneros	1,500	73%
	San Pedro	1,529	63%
	Las Vegas	249	24%
	San Jose	1,037	22%

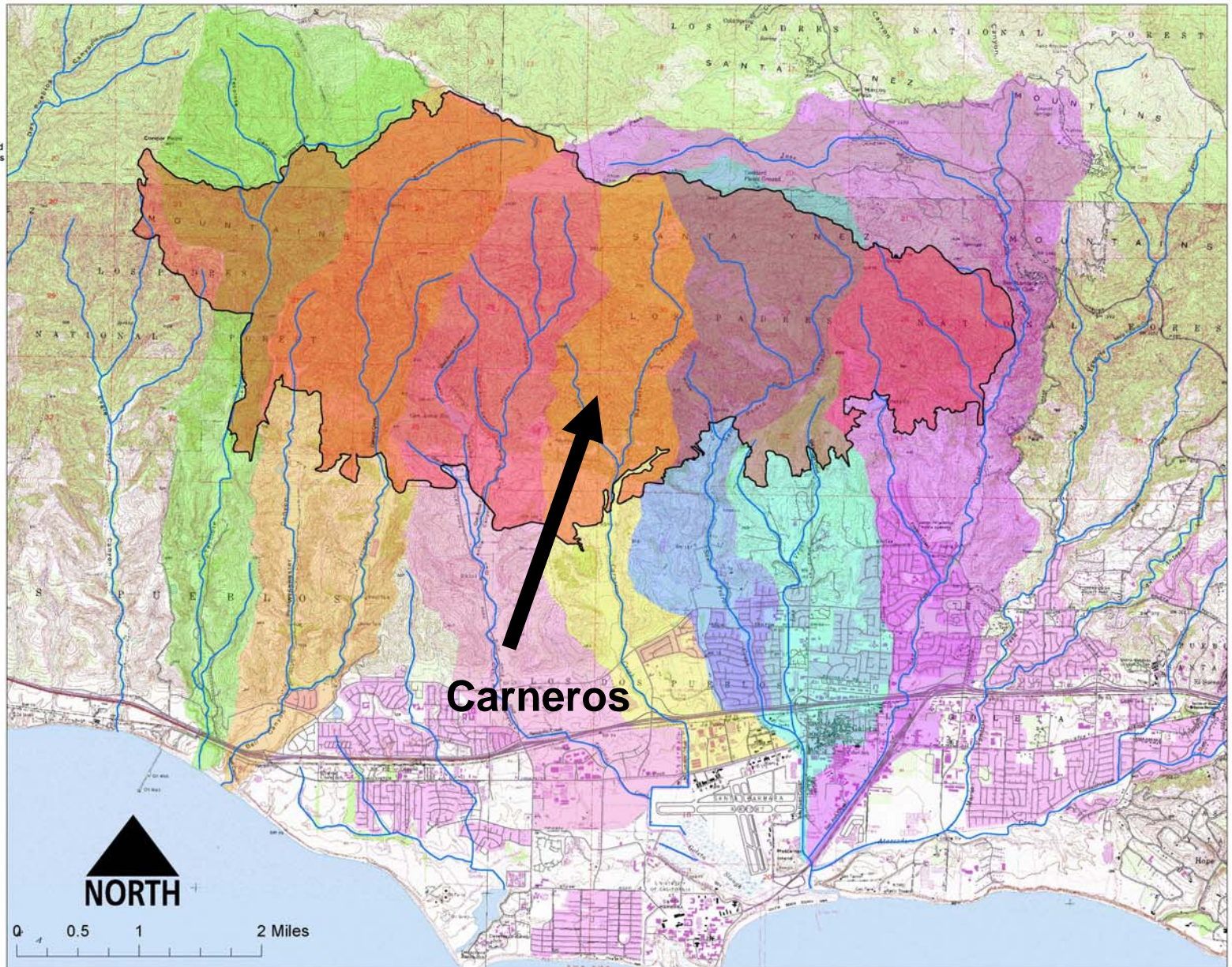


Gap Fire – Affected Watersheds

Gap Fire

Legend









	Gap Fire		
South Coast Watersheds			
	Tecolote	907	27%
	Winchester	2,097	54%
	Tecolotito	1,884	64%
	Los Carneros	1,500	73%
	San Pedro	1,529	63%
	Las Vegas	249	24%
	San Jose	1,037	22%

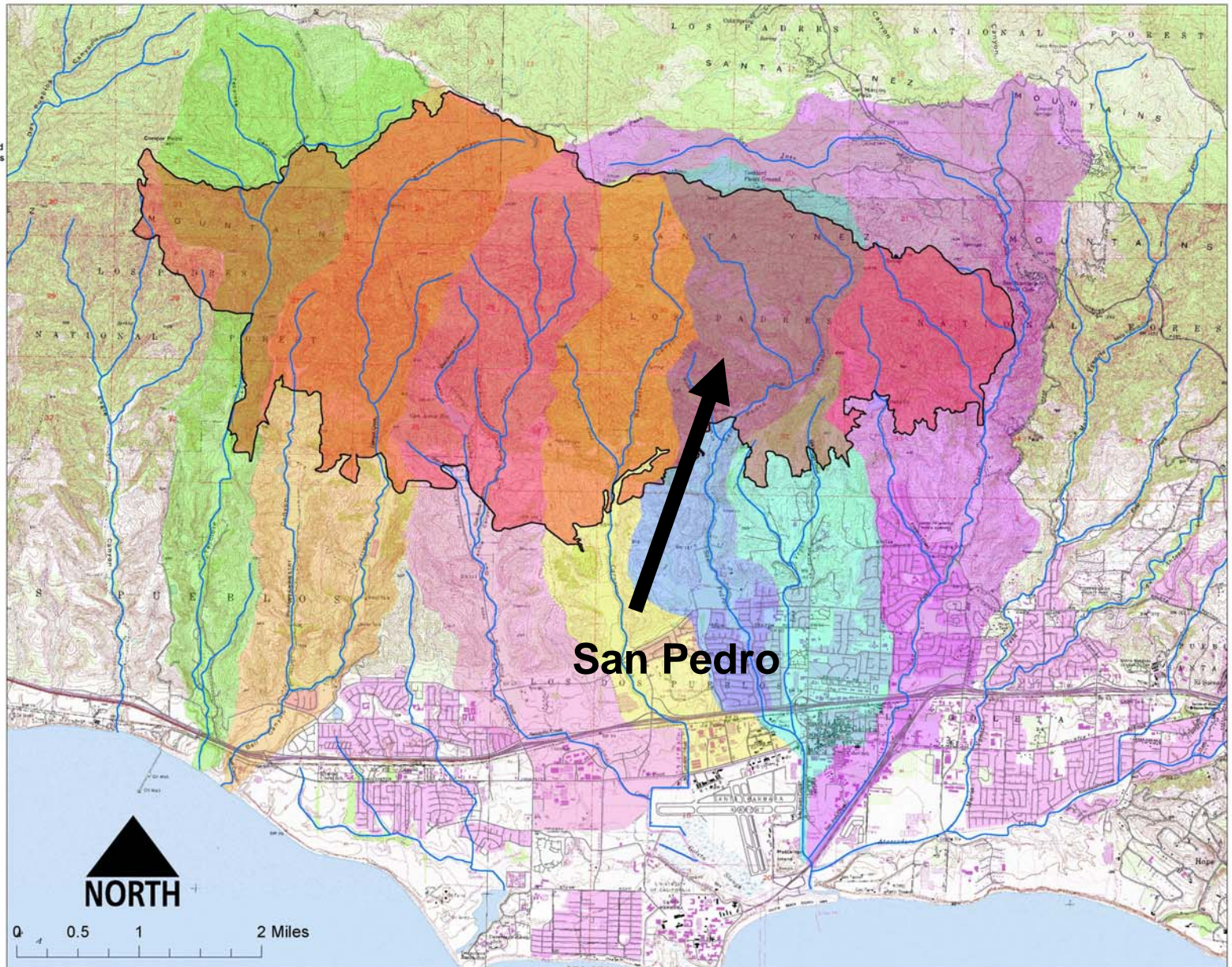


Gap Fire – Affected Watersheds

Gap Fire

Legend









	Gap Fire		
South Coast Watersheds			
	Tecolote	907	27%
	Winchester	2,097	54%
	Tecolotito	1,884	64%
	Los Carneros	1,500	73%
	San Pedro	1,529	63%
	Las Vegas	249	24%
	San Jose	1,037	22%

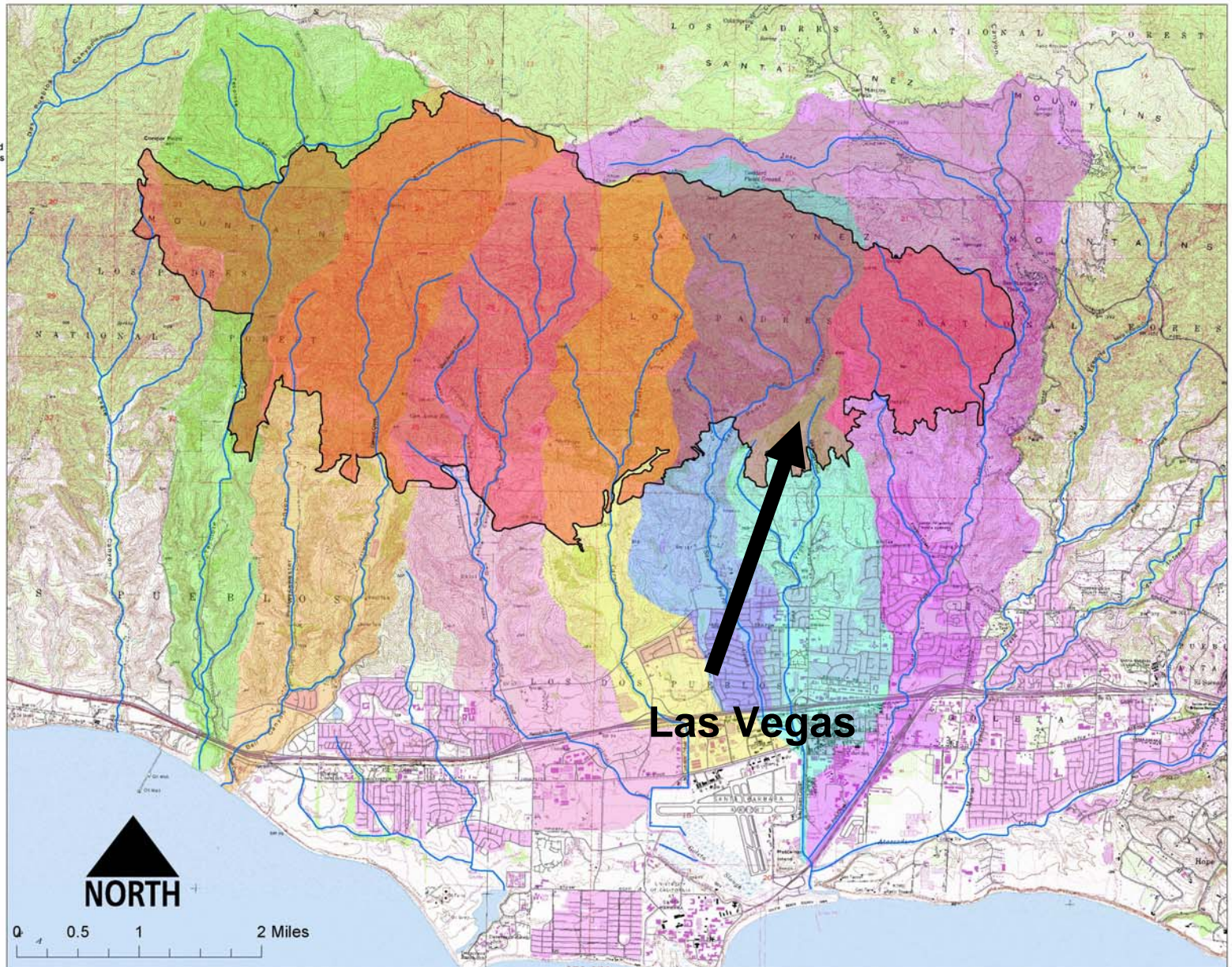


Gap Fire – Affected Watersheds

Gap Fire

Legend









South Coast Watersheds	Acreage Burned	Percentage Burned n/o Cathedral Oaks
 Gap Fire		
 Tecolote	907	27%
 Winchester	2,097	54%
 Tecolotito	1,884	64%
 Los Carneros	1,500	73%
 San Pedro	1,529	63%
 Las Vegas	249	24%
 San Jose	1,037	22%

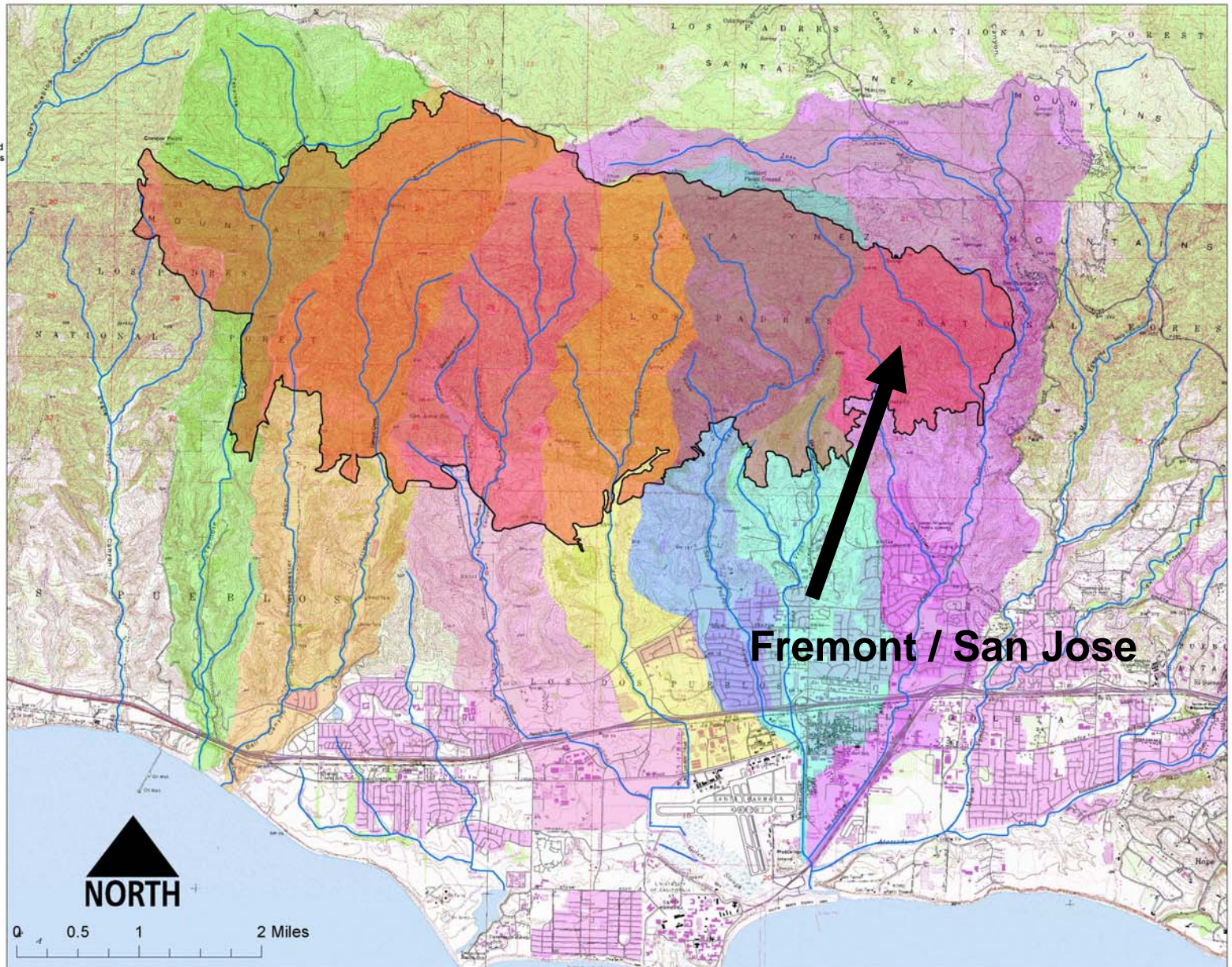


Gap Fire – Affected Watersheds

Gap Fire

Legend

South Coast Watersheds	Acreage Burned	Percentage Burned n/o Cathedral Oaks
 Gap Fire		
 Tecolote	907	27%
 Winchester	2,097	54%
 Tecolotito	1,884	64%
 Los Carneros	1,500	73%
 San Pedro	1,529	63%
 Las Vegas	249	24%
 San Jose	1,037	22%



Fire and Watershed Impacts

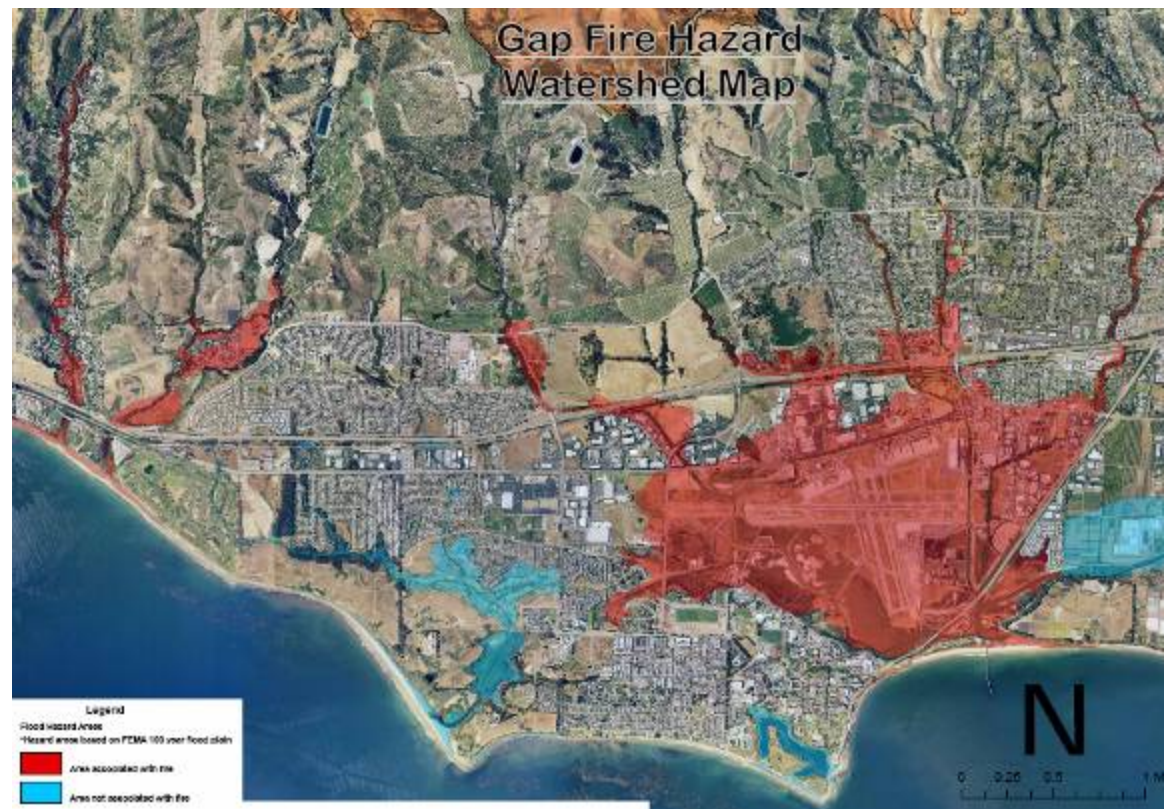
An aerial photograph of a watershed that has been severely impacted by a wildfire. The landscape is dominated by dark, charred tree trunks and a network of light-colored, eroded channels that have formed in the soil. These channels are interconnected, showing how water runoff is now concentrated into narrow paths, leading to increased erosion and sediment transport. The overall appearance is one of a barren, eroded landscape.

Burned Watersheds Characteristics

- Dramatic Increase in Runoff
- Decreased Response Time for Runoff
- Dramatic Increase in Sediment Production Rates
- Heavy Loading of Vegetative Debris

High Hazard Areas

- FEMA 100 year floodplain used as base
- Previously flooded areas particularly at risk, Airport, Goleta Old Town, San Pedro Creek Corridor



Watershed Response Projects

- Stream Clearing
- Sediment Basin Cleaning
- Debris Rack Installation
- Aerial Hydromulching
- Site Selected Emergency Protective Measures
- Winter Operations

**→ Coordinated Response With OES and
Cities of Goleta and Santa Barbara**

Stream Clearing

- Approximately 16 miles of Channel Clearing.
 - Removal of obstructive vegetation on channel bottom
 - Removal of down and dead trees
 - Hand work, hopefully use of CDF Crews



Sediment Basin Clearing

- 4 Existing Sediment Basins at SB Airport
- Maximize pre-winter storage



Debris Rack Installations

- Design Parameters
 - trap woody debris
 - protect downstream culverts
 - access for maintenance
- Locations
 - Elwood, Tecolotito
 - Carneros, San Pedro
 - Las Vegas Creeks



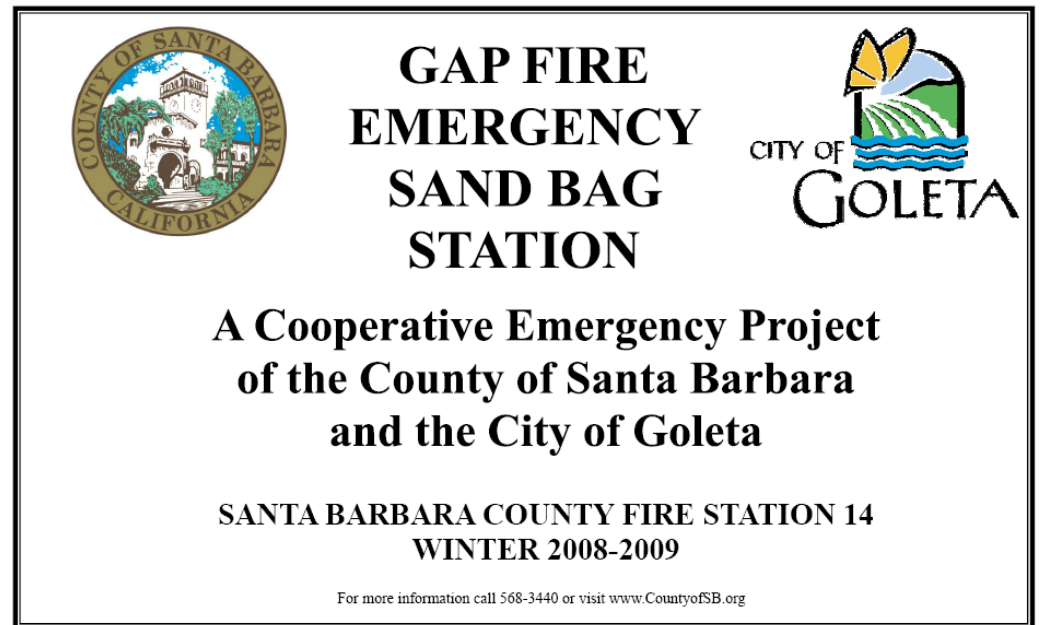
Aerial Hydromulching

- Treatment of applicable non-Federal Lands
 - less than 60% slopes
 - Low % of exposed rock



Emergency Protective Measures

- K-Rail and Culvert Improvements at selected locations
- Emergency Sand Bag Station – County Fire Station 14
- Others as identified



Winter Emergency Operations

- Excavation of Sediment Basins
- Creek Channel Monitoring
- Debris Rack Maintenance
- Vegetative Storage / Disposal
- Emergency Sediment Disposal – Goleta Beach



Watershed Project Costs



- Total Project Costs Estimated at \$4.7 Million
- County Secured Federal Funding (NRCS) for 75% of project costs - \$3.76 Million
- Remaining 25% may receive further State Cost Sharing
- Aerial Hydromulch Project local costs to be shared with the Cities of Goleta and Santa Barbara

Zaca Fire – Santa Maria River

- Last Winter Response Project in Place
- Coordination with US Army Corps of Engineers
- All Action Plans in Place



Gap Fire Project Team Summary



