

Laguna County Sanitation District



FY 2011 – 2012
Rates and Fees

3. 9. 2004

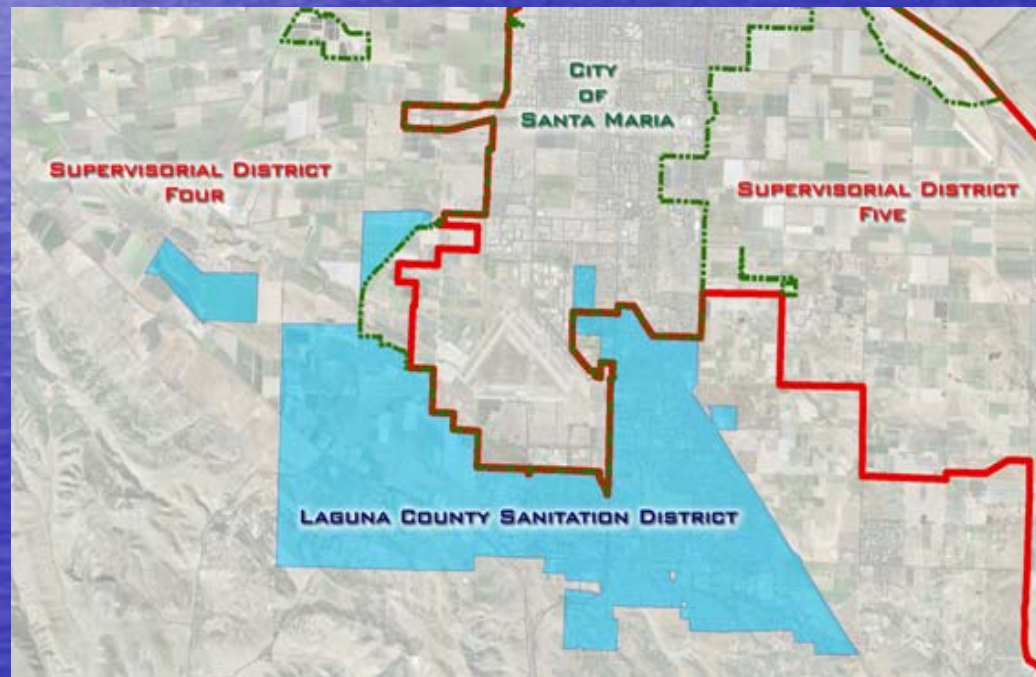
Laguna County Sanitation District



- Dependent special district created in 1958
- Provides wastewater services to Orcutt and unincorporated Santa Maria area
- Operates under:
 - RWQCB Order 01-042 (plant)
 - EPA (injection well)
 - SWRCB 2006-0003 (sewer system)
 - APCD (plant air emissions)
- Conserves and protects resources

Annual Rates and Fees Ordinance

- Public noticing pursuant to Prop 218
 - Mailer to 9,200 parcels and 880 mobile homes
- Hearing dates published pursuant to Government Code in Santa Maria Times
- No written responses to date



Sewer Charge Rates

- Pay for annual operation, maintenance, replacement, and reserves
- Collected on the tax roll
- 7% increase proposed for FY 2011-2012
 - 0.3% for operating costs
 - 5.2% for reserve
 - 1.5% for salaries

Proposed Sewer Charge

Residential unit equivalent (RUE) rate

Proposed annual rate	\$589.18
<u>Last year's rate</u>	<u>\$550.64</u>
Rate increase/yr	\$ 38.54

Equivalent to \$3.21/month

MFR = \$530.84/yr

School = \$30.75 per cap/yr

Commercial = Based on flow and load

How LCSD Compares Countywide

<u>Treatment Level</u>	<u>Agency</u>	<u>Monthly Rate</u>	<u>Inc</u>
Tertiary	Summerland	\$94.49*	2.4%
	Laguna	\$49.10	7.0%
Secondary	Montecito	\$100.45*	12.5%
	Santa Ynez	\$67.78*	
	Vandenberg Village	\$65.75	
	Mission Canyon	\$59.75	
	Los Alamos	\$59.25*	
	Solvang	\$56.07	72.6%
	Lompoc	\$53.74	7.0%
	Carpinteria	\$52.99*	4.5%
	Cuyama	\$45.00	
	Goleta Sanitary	\$37.62*	
	Santa Barbara	\$35.58	4.0%
	Goleta West Sanitary	\$31.15*	
Primary	Santa Maria	\$13.25	5.0%
	Mission Hills	\$31.50	
	Guadalupe	\$25.41	5.0%
	Buellton	\$18.00	
Average		\$49.83	

* These rates include estimated property tax contributions

Total Water Cost Comparison

<u>Agency</u>	<u>Water/Mo</u>	<u>Water and Sewer/Mo</u>
Montecito + Montecito Water	\$69.95	\$170.40
Summerland + Montecito Water	\$69.95	\$164.44
Carpinteria + Carpinteria Valley Water	\$93.67	\$146.66
Solvang	\$89.75	\$145.82
Santa Ynez + Santa Ynez RWCD 1	\$58.50	\$126.28
Mission Canyon + Santa Barbara	\$54.43	\$114.18
Los Alamos	\$45.52	\$104.77
Lompoc	\$50.54	\$104.28
Goleta Sanitary + Goleta Water	\$64.73	\$102.45
Vandenberg Village	\$33.56	\$99.31
Cuyama	\$53.45	\$98.45
Goleta West Sanitary + Goleta Water	\$64.73	\$95.88
Santa Barbara	\$53.43	\$89.01
Laguna + Golden State Water	\$30.34	\$79.44
Santa Maria	\$51.53	\$64.78
Guadalupe	\$32.50	\$57.91
Mission Hills	\$25.60	\$57.10
Buellton	\$37.90	\$55.90
Average		\$104.28

Developer Impact Fees



- Paid by development for system impacts
 - Trunk line fees fund sewer system capacity improvements
 - Connection fees fund future treatment and disposal capacity improvements

Developer Impact Fees

- Fees adjusted by indices pursuant to ordinances and agreements
- Connection Fee (2.4%) per RUE \$4,979
- Trunk Line Fees
 - Dutard trunk line (2.4%) per RUE \$ 886
 - Bradley trunk line (3.25%) per RUE \$1,997

Recommendations

- Conduct first reading of the ordinance to revise service charges and fees
- Adopt the ordinance setting the rates for FY 11/12 at the second hearing