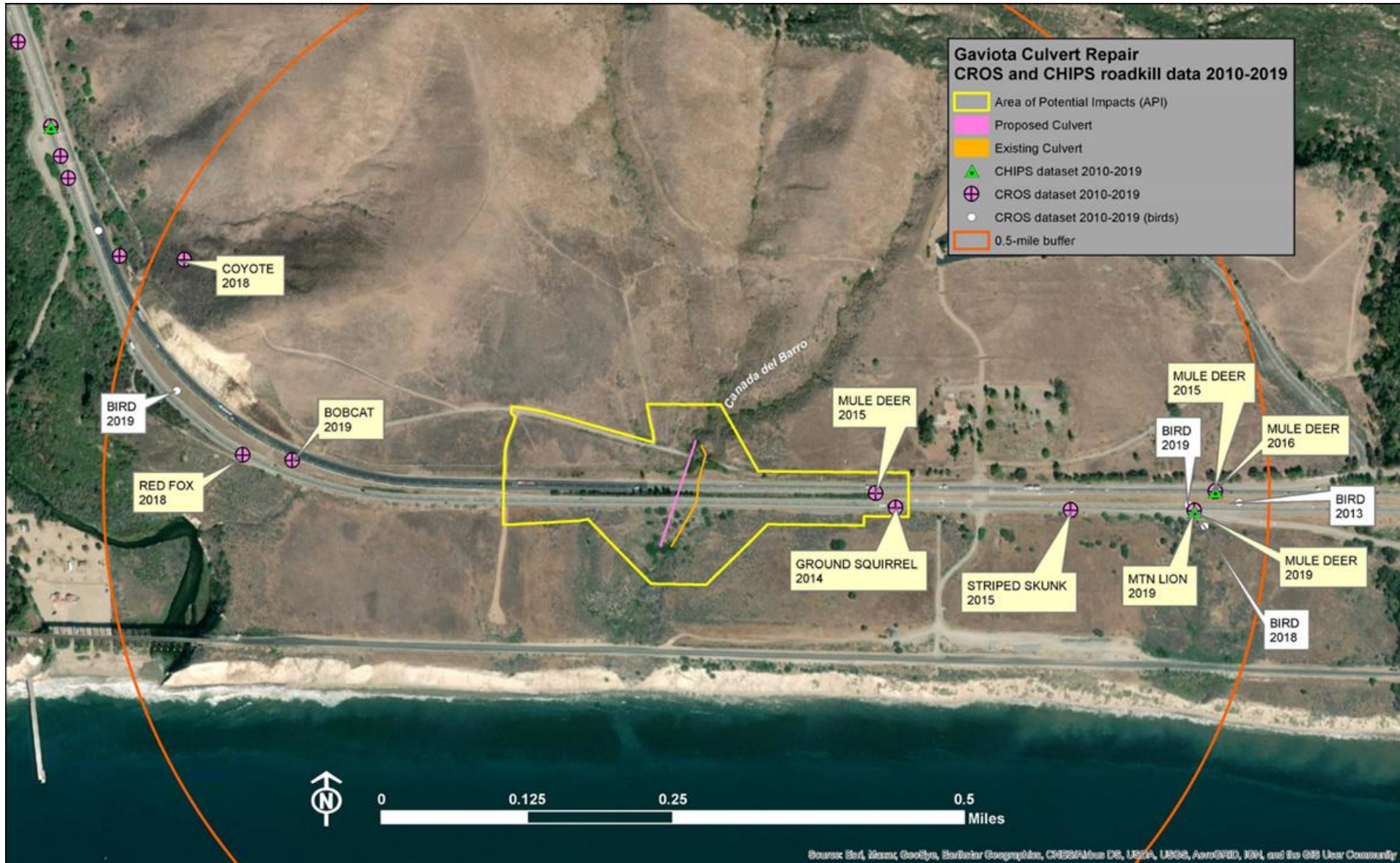




SB 101
S/B SLOPE
S_PM 45.50
NODE 1



US 101 looking north



Gaviota Coast Plan- Wildlife Corridors

- Action NS-2: Wildlife Corridors. Landforms and natural features, between the watersheds and mountain and ocean habitats, that are potential wildlife movement areas for apex species and medium and large mammals should be identified in consultation with State and federal wildlife agencies, and/or through specialized scientific studies.
- Dev Std NS-1: Wildlife Corridors. (COASTAL) Where avoidance of wildlife corridors is infeasible, development, including fences, gates, roads, and lighting shall be sited and designed to not restrict wildlife movement. Fences and gates shall be wildlife-permeable, unless the fence or gate is associated with an approved agricultural use, is located within an approved development area, or where temporary fencing is required to keep wildlife away from habitat restoration areas.