

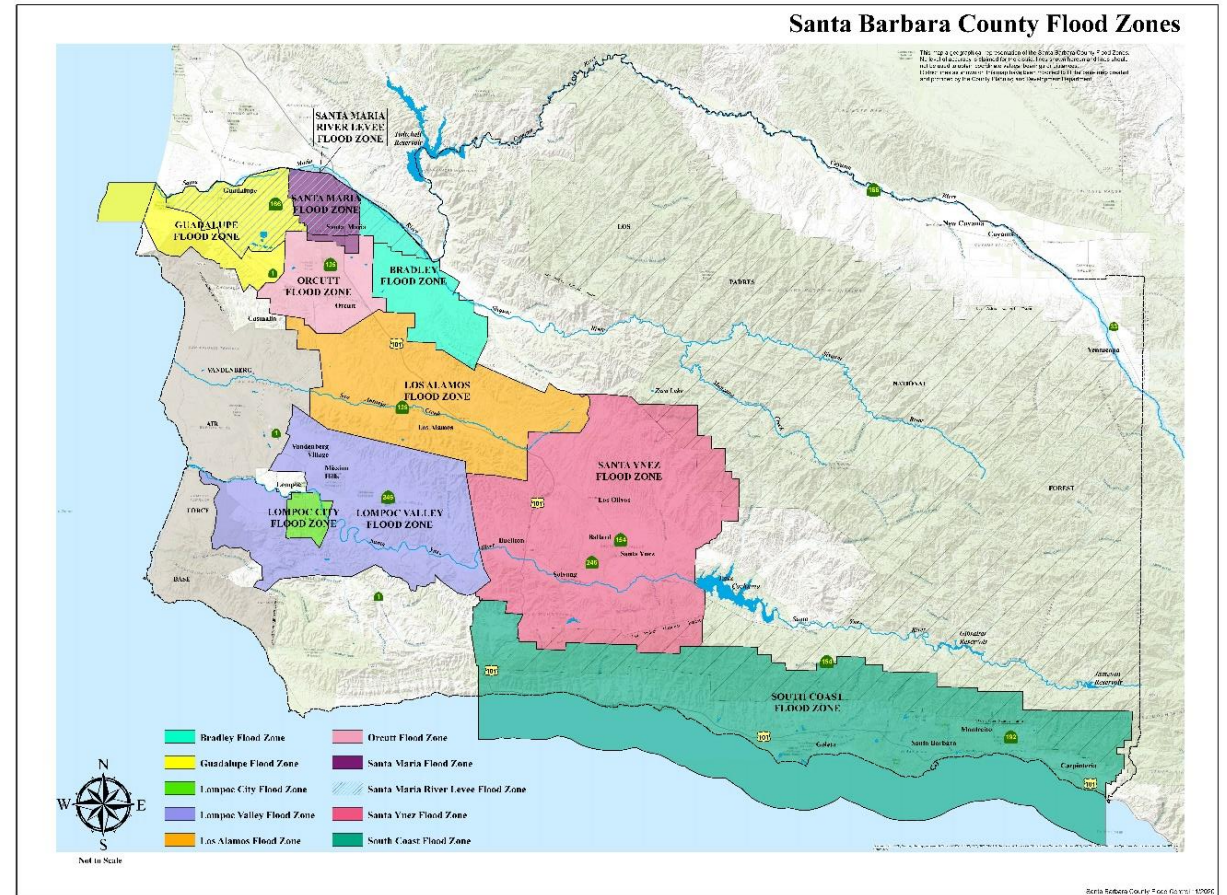
Santa Barbara County Flood Control and Water Conservation District



**Benefit Assessment Program FY 2023-24
Board of Directors Meeting
June 6, 2023**

Flood Control Benefit Assessment Program

- Voter Approved Assessments
- Assessment Approved with an Annual CPI Adjustment to Preserve Funding Levels
- Proposed Increase 3.65% for FY 2023-24



Proposed Benefit Assessment Rates

FY 2023-24

	Group A		Group B		Group C		Group D		Group E	
	FY 2023-24		FY 2023-24		FY 2023-24		FY 2023-24		FY 2023-24	
	\$/Ac	Min \$ Assmt	\$/Ac	Min \$ Assmt	\$/Ac ¹ (over 0.3 Ac only)	Min \$ Assmt	\$/Ac	Min \$ Assmt	\$/Ac	Min \$ Assmt
Bradley #3	53.42	16.03	40.06	12.02	0.00	8.06	2.00	0.59	0.19	0.05
Guadalupe #3	28.28	8.47	21.22	6.38	0.00	4.26	1.07	0.33	0.11	0.03
Lompoc City #2	119.32	35.80	89.48	26.83	0.00	17.91	4.49	1.34	0.42	0.12
Lompoc Valley #2	46.60	13.96	34.92	10.47	0.00	6.97	1.74	0.52	0.18	0.04
Los Alamos #1	59.25	17.78	44.45	13.32	0.00	8.88	2.22	0.66	0.22	0.05
Orcutt #3	35.51	10.66	26.63	8.00	0.00	5.34	1.33	0.40	0.14	0.04
Santa Maria #3	113.60	34.09	85.21	25.63	0.00	17.03	4.27	1.29	0.40	0.12
SMR Levee	30.65	9.20	22.99	6.90	0.00	4.61	1.14	0.36	0.12	0.03
Santa Ynez #1	26.18	7.86	19.63	5.89	0.00	3.92	0.97	0.30	0.11	0.03
South Coast #2	199.41	59.83	149.55	44.86	0.00	29.91	7.47	2.25	0.74	0.22

GROUP A - Commercial Industrial.

GROUP B - Institutions and Apartments

GROUP C - Single-family residential and small multiple (2 to 4 units), cemeteries.

GROUP D - Irrigated agriculture, golf courses.

GROUP E - Dry farmed agricultural, vacant ground.

Note: A \$1.00 per parcel assessment is added per Resolution No. 82-209 pursuant to Government Code Sections 29304 and 51800.

Minimum assessment included up to 0.3-acre lot. Any single family "Group C" LOT AREA over 0.3 acres will be additionally charged in accordance with the schedule for "Group D."

2023 Storms Financial Impacts

Approximate Reserve Balances					
Zones	June 2022	June 2023	Reduction	% Reduction	
Bradley	\$ 594,660	\$ 579,660	\$ 15,000	3%	
Guadalupe	\$ 1,296,072	\$ 1,296,072	\$ -	0%	
Lompoc City	\$ 7,415,995	\$ 7,415,995	\$ -	0%	
Lompoc Valley	\$ 2,725,417	\$ 1,475,417	\$ 1,250,000	46%	
Los Alamos	\$ 1,820,915	\$ 1,779,415	\$ 41,500	2%	
Orcutt	\$ 4,965,454	\$ 4,386,954	\$ 578,500	12%	
Santa Maria	\$ 11,964,215	\$ 11,869,215	\$ 95,000	1%	
SMR Levee	\$ 1,180,717	\$ 480,717	\$ 700,000	59%	
Santa Ynez	\$ 2,391,095	\$ 2,101,095	\$ 290,000	12%	
South Coast	\$ 25,375,939	\$ 4,667,693	\$ 20,708,246	82%	
Legend					
Most impacted					

Recommendations



Randall Road Debris Basin Project Completion



Randall Road Debris Basin after the January event

- Approval of actions a, b, c, and d
 - First Reading
- Return June 27, 2023 for Second Reading and Final Adoption (Admin Agenda)