



# SANTA BARBARA COUNTY FIRE

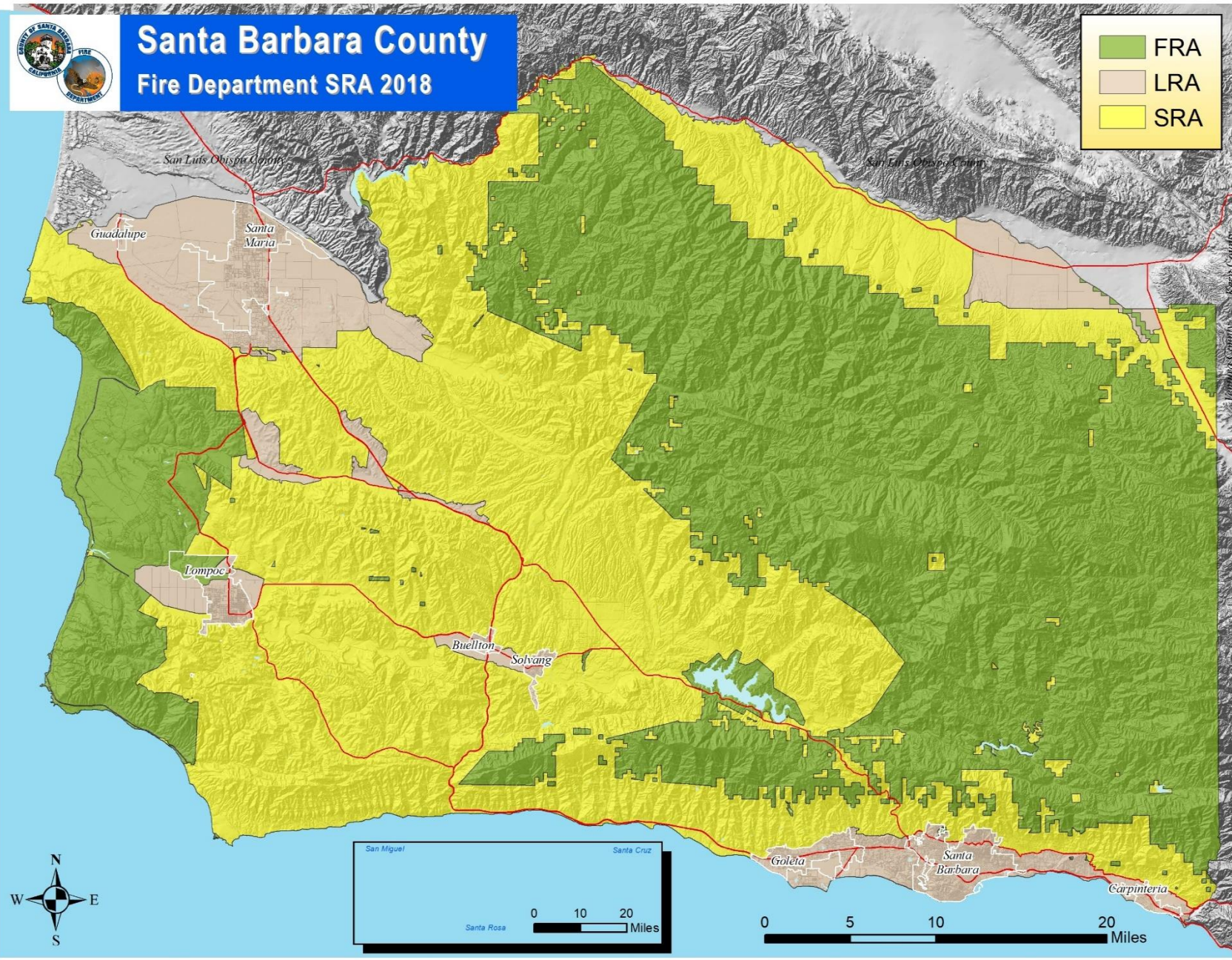
# Vegetation Management Program

Fire Chief Eric Peterson  
Deputy Chief Rob Heckman  
Fire Marshal Steve Oaks  
Deputy Fire Marshal Rob Hazard  
Captain Fred Tan  
Captain Vince LaRocco



# Santa Barbara County Fire Department SRA 2018

	FRA
	LRA
	SRA



# Vegetation Management Program



- **2018 Strategic Fire Plan For California**
- **Santa Barbara County Unit Strategic Fire Plan**
- **Santa Barbara County Multi-Jurisdictional Hazard Mitigation Plan**
- **Seismic Safety & Safety Element**
- **Community Wildfire Protection Plans**
- **Executive Order B-52-18**
- **State Legislation**
  - **SB 1260 Fire Prevention and Protection: Prescribed Burns**
  - **AB 2911 Fire Safety**
- **Vegetation Treatment Program PEIR**

# **Vegetation Management Los Padres National Forest**

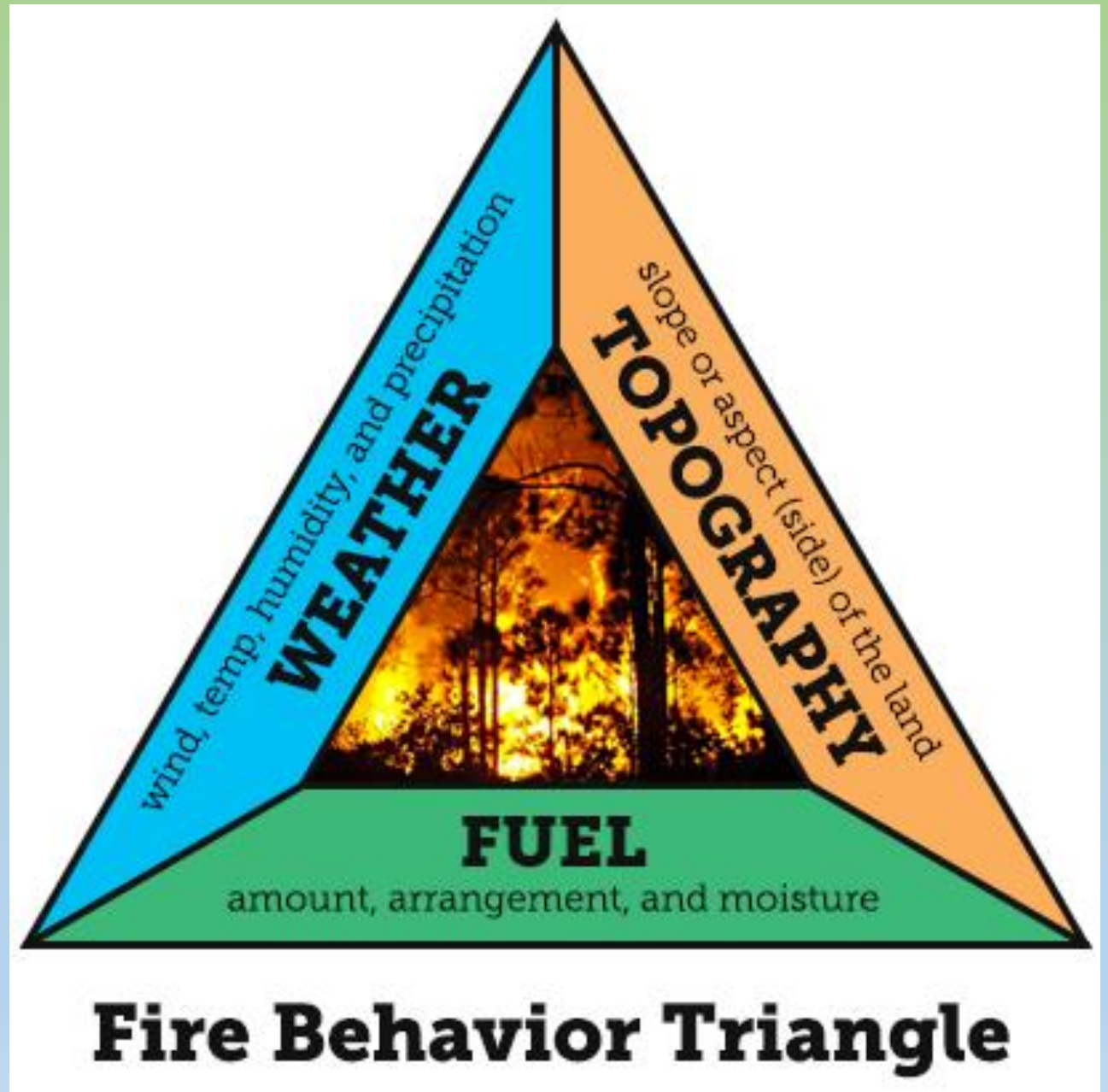


- **National Cohesive Strategy**
- **Los Padres National Forest Land Management Plan**
- **Strategic Fuel Break Assessment**
- **Community Wildfire Protection Plans**
- **National Environmental Policy Act (NEPA)**

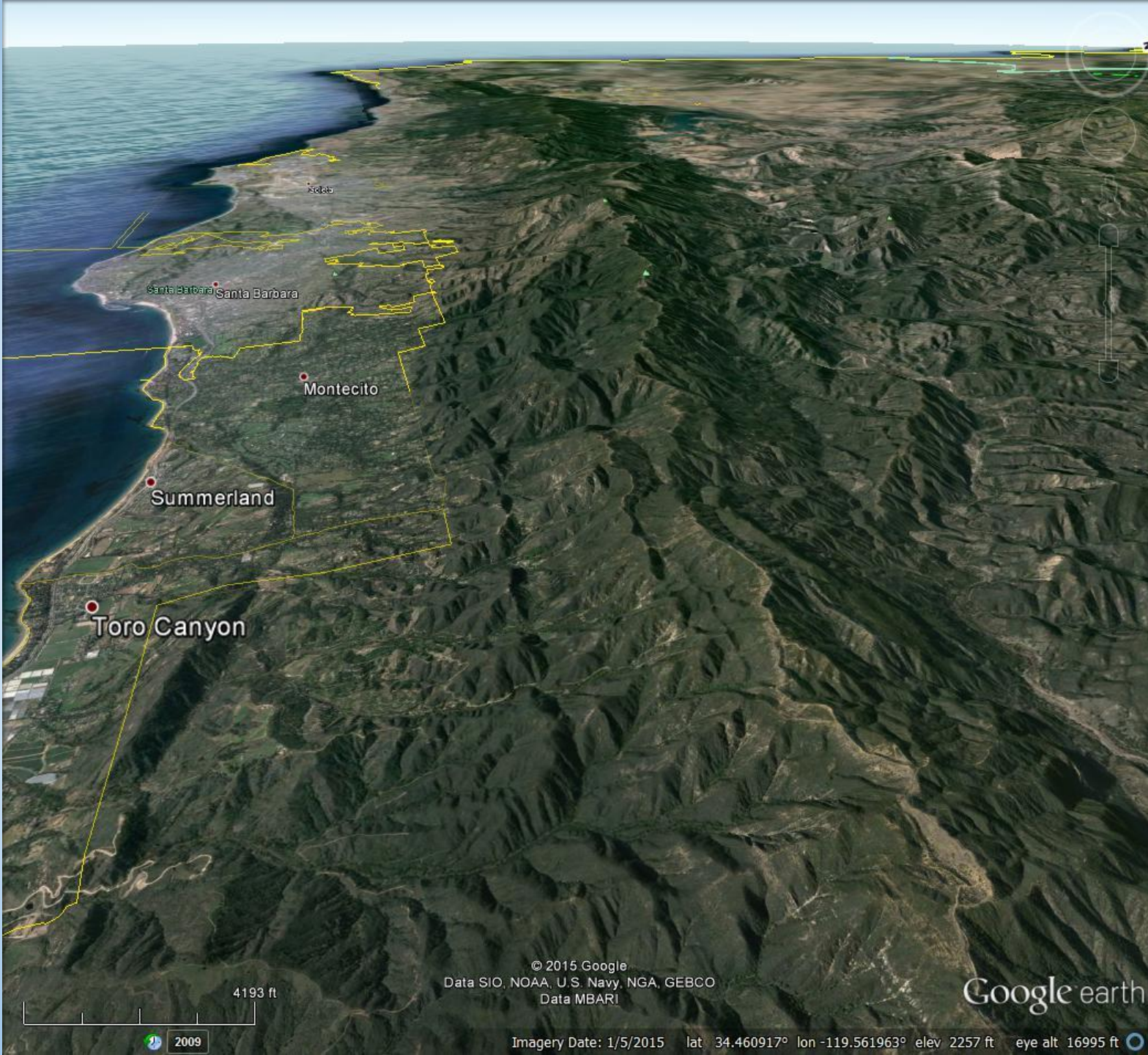
# Fire Behavior

*How a fire burns:*

- Weather
- Topography (Terrain)
- Fuels (Vegetation)

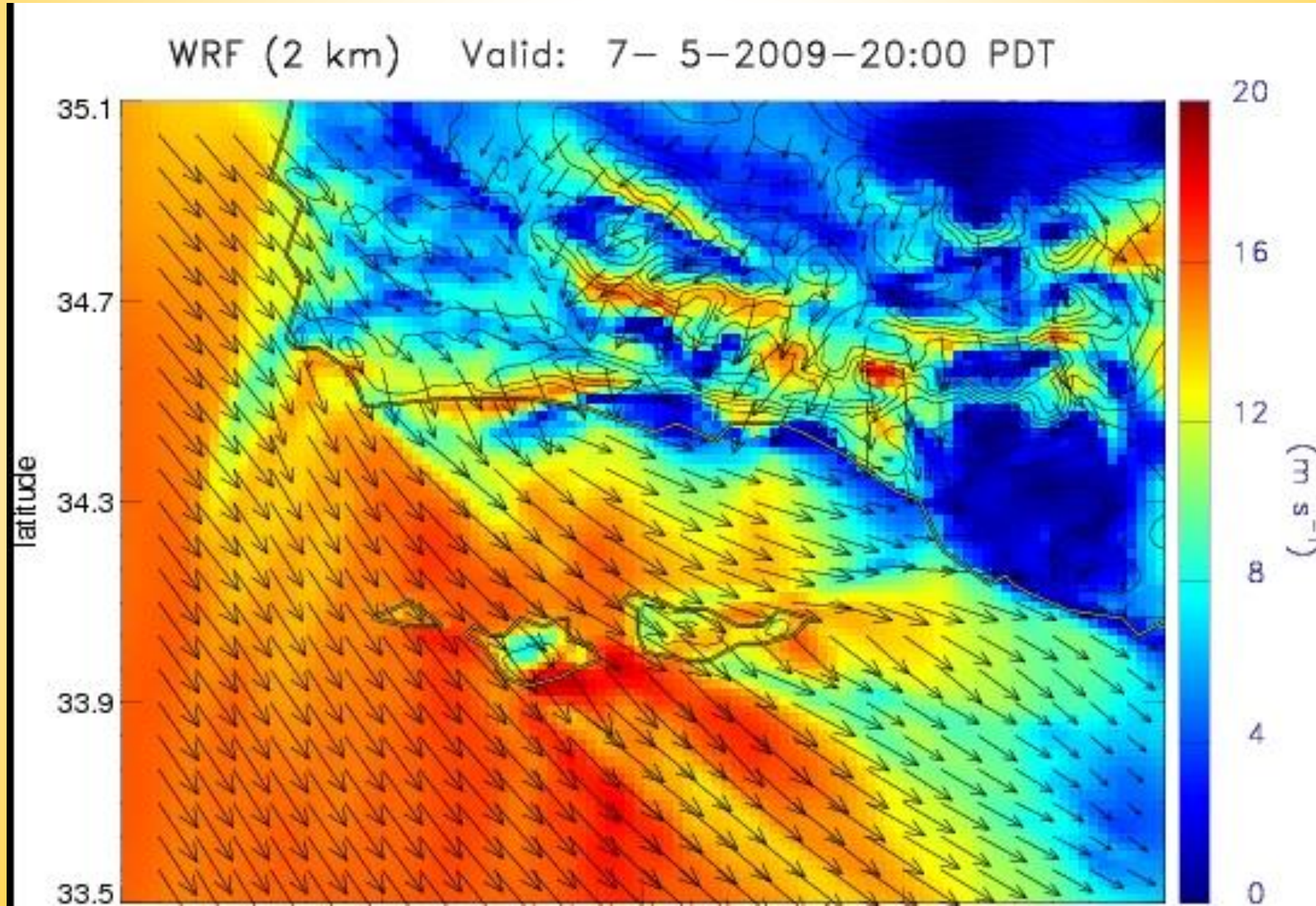


T  
O  
P  
O  
G  
R  
A  
P  
H  
I  
C



E  
X  
T  
R  
E  
M  
E  
S

# Sundowner Winds



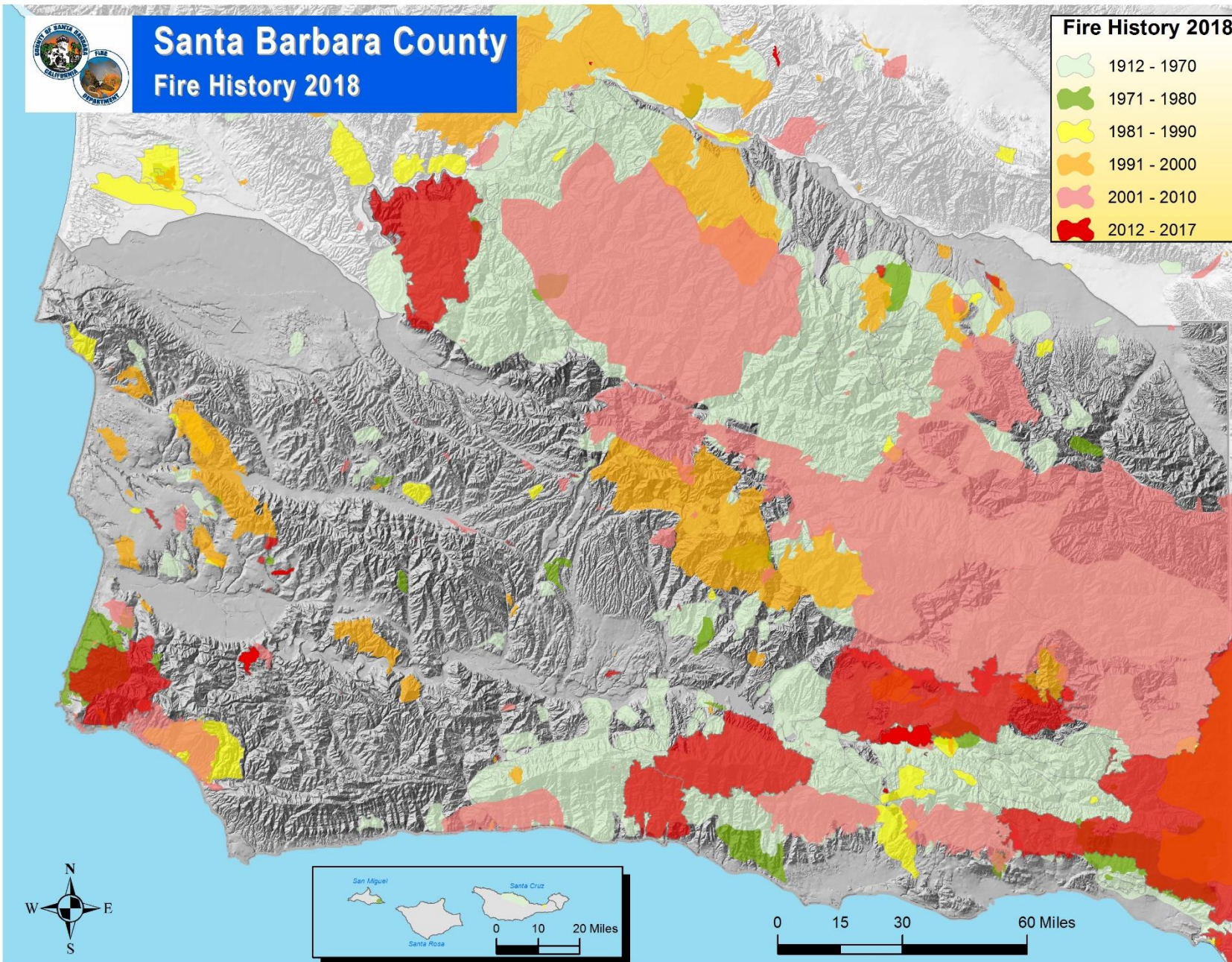
# The Fuel Challenge







# Santa Barbara County Fire History 2018



# Zaca Fire 2007



# Gap Fire 2008



# Tea Fire 2008



# Jesusita Fire 2009



# Sherpa, Rey and Canyon Fires 2016



# Alamo and Whittier Fires 2017



# Thomas Fire 2017





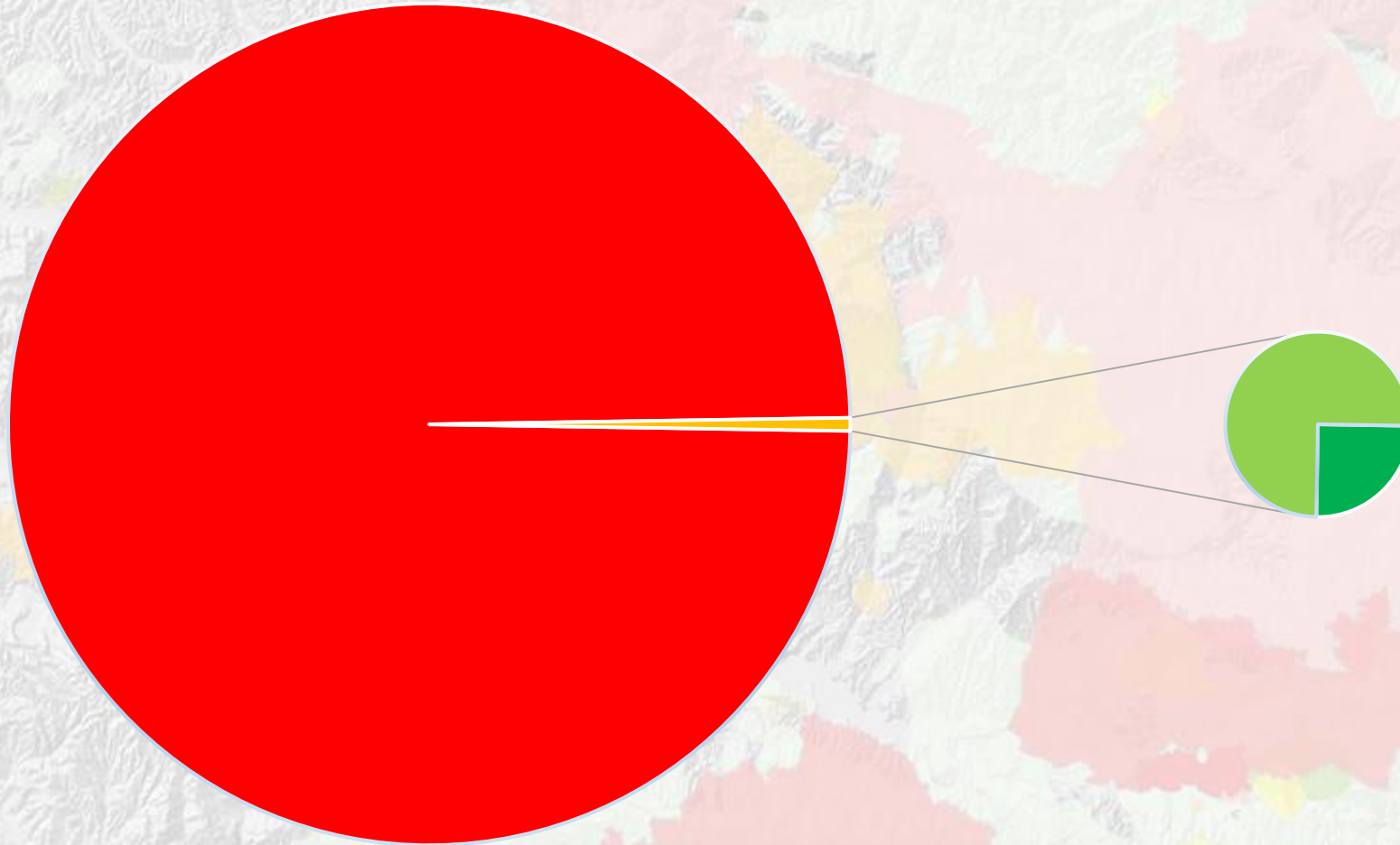
## Major Wildfires in Santa Barbara County 1955-2017

Fire	Date	Cause	Acres Burned	Structures Damaged or Destroyed	Deaths
<b>Thomas</b>	<b>December-2017</b>	<b>Under Investigation</b>	<b>281,893*</b>	<b>1063*</b>	<b>2**</b>
<b>Whittier</b>	<b>July-2017</b>	<b>Vehicle</b>	<b>18,430</b>	<b>53</b>	<b>0</b>
<b>Alamo</b>	<b>July-2017</b>	<b>Under Investigation</b>	<b>28,687</b>	<b>15</b>	<b>0</b>
<b>Canyon</b>	<b>August-2016</b>	<b>Under Investigation</b>	<b>12,518</b>	<b>1</b>	<b>1</b>
<b>Rey</b>	<b>September-2016</b>	<b>Under Investigation</b>	<b>33,606</b>	<b>0</b>	<b>0</b>
<b>Sherpa</b>	<b>June-2016</b>	<b>Miscellaneous</b>	<b>7,474</b>	<b>1</b>	<b>0</b>
<b>White</b>	<b>May-2013</b>	<b>Miscellaneous</b>	<b>1,984</b>	<b>0</b>	<b>0</b>
<b>La Brea</b>	<b>August-2009</b>	<b>Miscellaneous</b>	<b>91,622</b>	<b>1</b>	<b>0</b>
<b>Jesusita</b>	<b>May-2009</b>	<b>Equipment Use</b>	<b>8,733</b>	<b>80</b>	<b>0</b>
<b>Tea</b>	<b>November-2009</b>	<b>Campfire</b>	<b>1,940</b>	<b>210</b>	<b>0</b>
<b>Gap</b>	<b>July-2008</b>	<b>Miscellaneous</b>	<b>9,443</b>	<b>4</b>	<b>0</b>
<b>Zaca</b>	<b>July-2007</b>	<b>Equipment Use</b>	<b>240,207</b>	<b>1</b>	<b>0</b>
<b>Perkins</b>	<b>July-2006</b>	<b>Lightning</b>	<b>14,988</b>	<b>0</b>	<b>0</b>
<b>Gaviota</b>	<b>July-2004</b>	<b>Lightning</b>	<b>7,440</b>	<b>1</b>	<b>0</b>
<b>Marre</b>	<b>September-1993</b>	<b>Smoking</b>	<b>43,822</b>	<b>0</b>	<b>0</b>
<b>Paint</b>	<b>June-1990</b>	<b>Arson</b>	<b>4,270</b>	<b>673</b>	<b>1</b>
<b>Wheeler</b>	<b>July-1985</b>	<b>Miscellaneous</b>	<b>119,361</b>	<b>26 (on border with Ventura County)</b>	<b>0</b>
<b>Sycamore</b>	<b>July-1977</b>	<b>Kite into powerlines</b>	<b>806</b>	<b>234</b>	<b>0</b>
<b>Romero</b>	<b>October-1971</b>	<b>Arson</b>	<b>14,538</b>	<b>n/a</b>	<b>4</b>
<b>Coyote</b>	<b>September-1964</b>	<b>Undetermined</b>	<b>65,338</b>	<b>94</b>	<b>1</b>
<b>Refugio</b>	<b>September-1955</b>	<b>Structure Fire</b>	<b>79,428</b>	<b>20</b>	<b>0</b>

\*Started in Ventura County with majority of acres and structure loss in Ventura County

\*\*20 civilian deaths and 2 missing persons from resulting debris flow

# ACRES OF VEGETATION ALTERED BY WILDLAND FIRE VERSUS SANTA BARBARA COUNTY FIRE FUEL TREATMENTS SINCE 2004



■ Wildland Fire ( 518,068 acres)

■ Completed and Maintained Fuel Treatments (648 acres)

■ Planned Fuel Treatments (1,942 acres)

# Vegetation Management Plan



- **Community Based**
  - Defensible Space
  - Community Fuel Treatments
  - CWPP Planning Process
- **Landscape Based**
  - Prescribed Fire
  - Prescribed Herbivory/ Agriculture
- **Strategic Pre-Fire**
  - Ridgeline Strategic Fuel Breaks
  - Roadside Fuel Treatments

# Defensible Space Program



- Education and enforcement of California Public Resource Code 4291
- Provides a safe area for firefighters to operate in
- Inspections conducted annually
- Over 14,000 structures in SBC SRA
- Homeowner responsibility



# Defensible Space

What we are trying to prevent...



Michael J. Pusnik Jr. / US Na



# Defensible Space

What we want to accomplish...



# Community Defensible Space



# Tunnel Trailhead

## Community Defensible Space Fuel Treatment

2015



2016





# Community Wildfire Protection Planning: *Essential component of the Strategic Fire Plan for California*



# Community Wildfire Protection Plans

- **Recognize that community plans and priorities have an important role in shaping management on federal and non-federal lands**
- **Emphasize cross-boundary action**
- **Engage all branches of government at the local level**

# **CWPP Minimum Requirements**

- **Collaboration**
- **Prioritized Fuel Reduction**
- **Treatment of Structural Ignitability**

# Existing CWPP's

- **Mission Canyon CWPP**
- **Goleta City CWPP**
- **Carpinteria-Summerland FPD CWPP**
- **Montecito CWPP**
- **Santa Barbara City CWPP**
- **San Marcos Pass/Eastern Goleta Foothills CWPP**  
*\*DRAFT*

# **Recommended for CWPP Development**

- **San Roque Foothills**
- **Goleta Foothills**
- **Gaviota Coast**
- **Burton Mesa Communities**
- **Lompoc City**
- **Tepusquet**

# Prescribed Fire: A Tool For Ecosystem Management



# Prescribed Fire: Defined

- **Application of fire to fuels to accomplish planned resource management objectives**
  - Reduce age class of vegetation
  - Reduce amount of dead fuel
  - Restore fire-adapted ecosystems
  - Cost effective
- **Conducted under defined weather and fuel conditions**
  - Reduce adverse fire impacts
  - Minimize chance of fire escape
- **Practical challenges**
  - High risk in Wildland Urban Interface
  - Smoke management
  - Decrease in prescription window due to longer high fire season

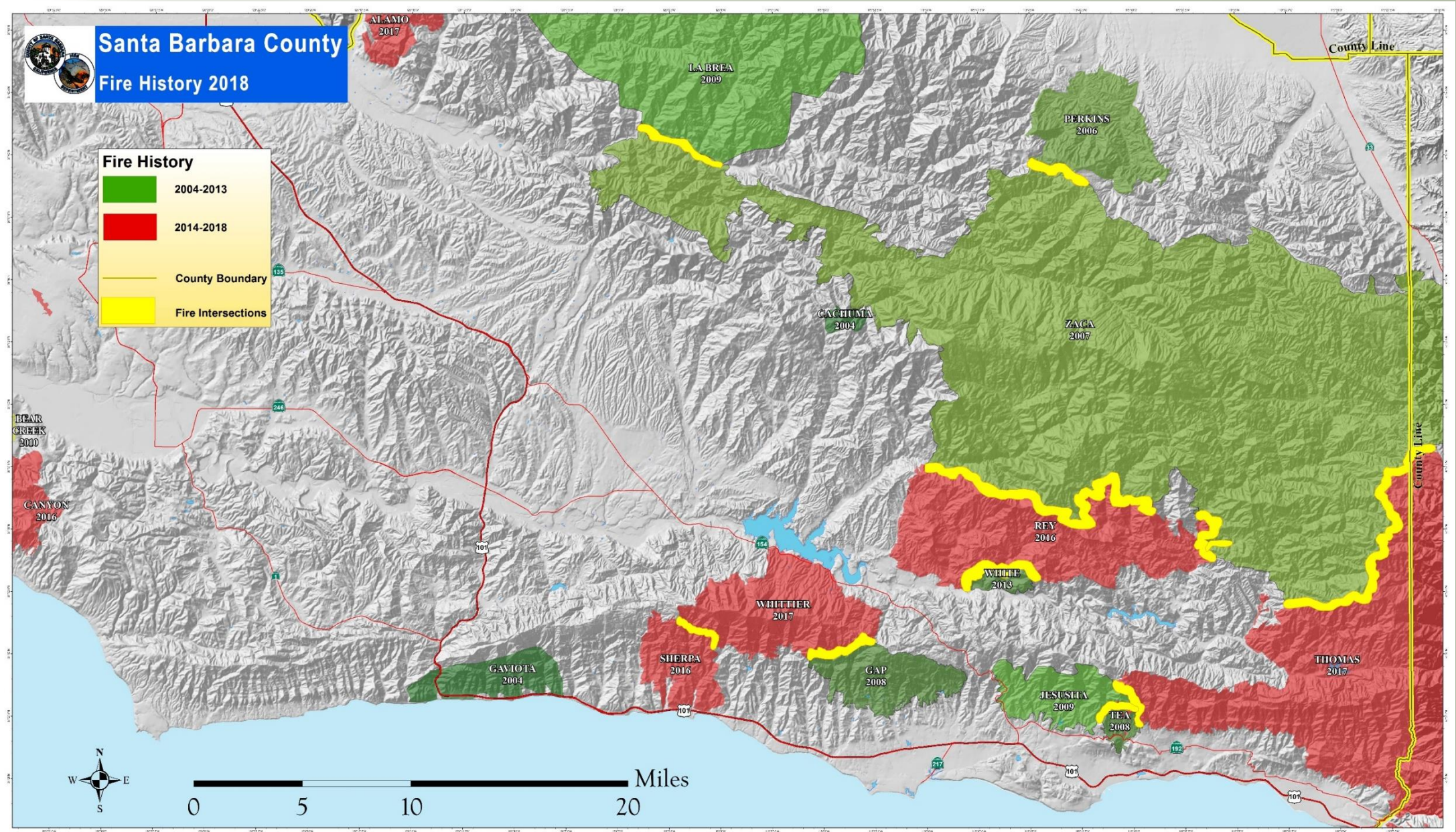
# Sage/Aliso Prescribed Burn SBC/USFS



27 1:44 PM



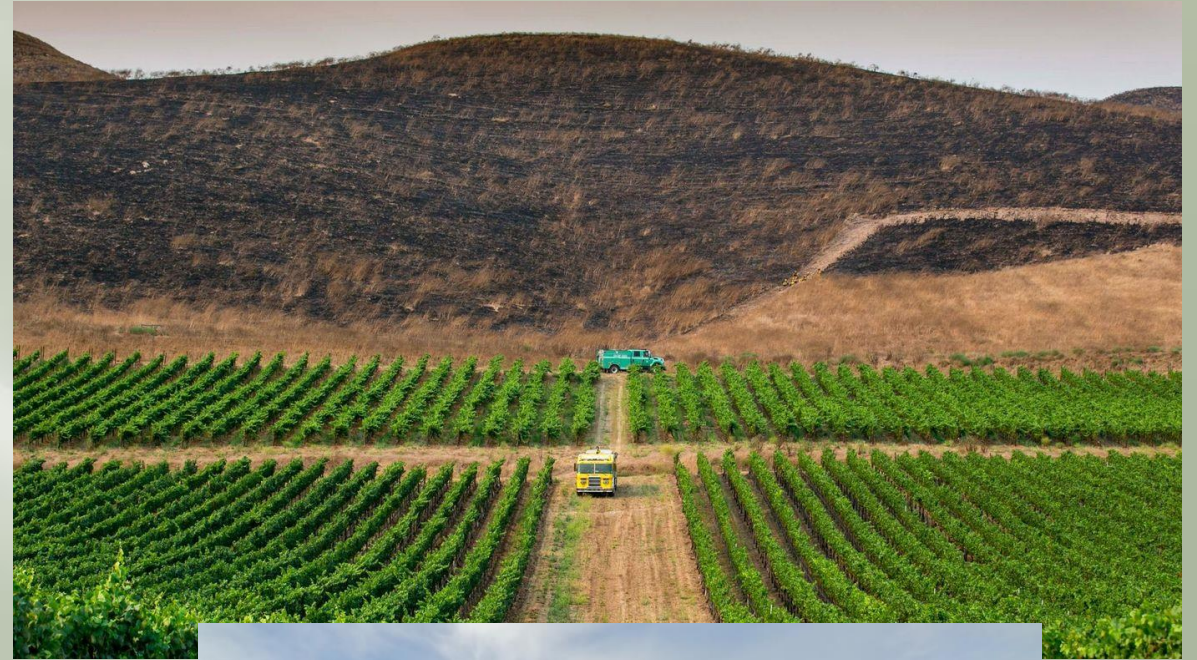
# Previous Fire Intersections ~55 Miles



# Prescribed Herbivory/ Agriculture



# Prescribed Herbivory/ Agriculture



# Strategic Pre-Fire

- **Ridgeline Fuel Breaks**



# Strategic Pre-Fire Fuel Breaks

- **Fuel breaks are designed to facilitate indirect fire attack**
- **Used in conjunction with backfiring operations**
- **Create safer and more effective positions for firefighters to operate in**
- **Increase effectiveness of fire retardant**
- **Need to be located along favorable topography such as ridgelines or valley bottoms**
- **NOT designed to stop fire independently**

# Strategic Pre-Fire

- **Access/egress route and roadside fuel reduction**



# Strategic Pre-Fire Access/Egress Routes

- Reduce fuel along roadside shoulders to reduce potential fire intensity
- Mow annual fuels in late spring to reduce roadside ignitions
- Create safer routes for evacuation
- Enables use of road as a potential fuel break

# Recommendations



## COMMUNITY BASED:

- **Update Santa Barbara County defensible space standards to comply with AB 2911**
- **Collaborate with Planning & Development in updating the Safety Element of the Comprehensive Plan**
- **Support continued development of Community Wildfire Protection Plans for at-risk communities**
- **Collaborate with Operational Area partners in the planning and implementation of regional vegetation management projects**
- **Complete efforts to develop a South Coast Foothill Community Defensible Space zone using existing Ag greenbelts, natural areas of light fuels, and targeted fuel treatments where necessary**
- **Develop a Community Defensible Space zone around the Burton Mesa communities**



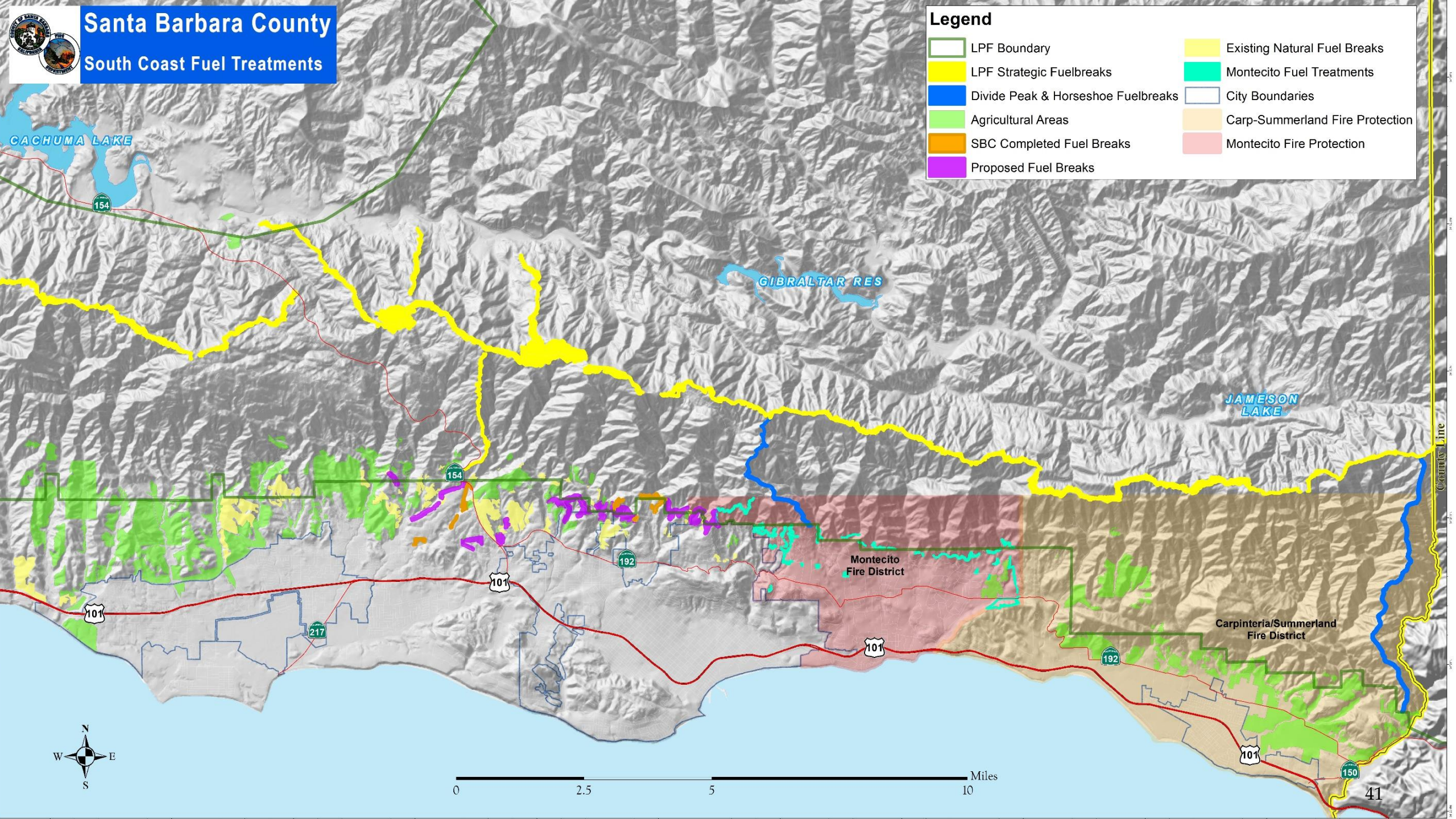


# Santa Barbara County

## South Coast Fuel Treatments

### Legend

- LPF Boundary
- LPF Strategic Fuelbreaks
- Divide Peak & Horseshoe Fuelbreaks
- Agricultural Areas
- SBC Completed Fuel Breaks
- Proposed Fuel Breaks
- Existing Natural Fuel Breaks
- Montecito Fuel Treatments
- City Boundaries
- Carp-Summerland Fire Protection
- Montecito Fire Protection

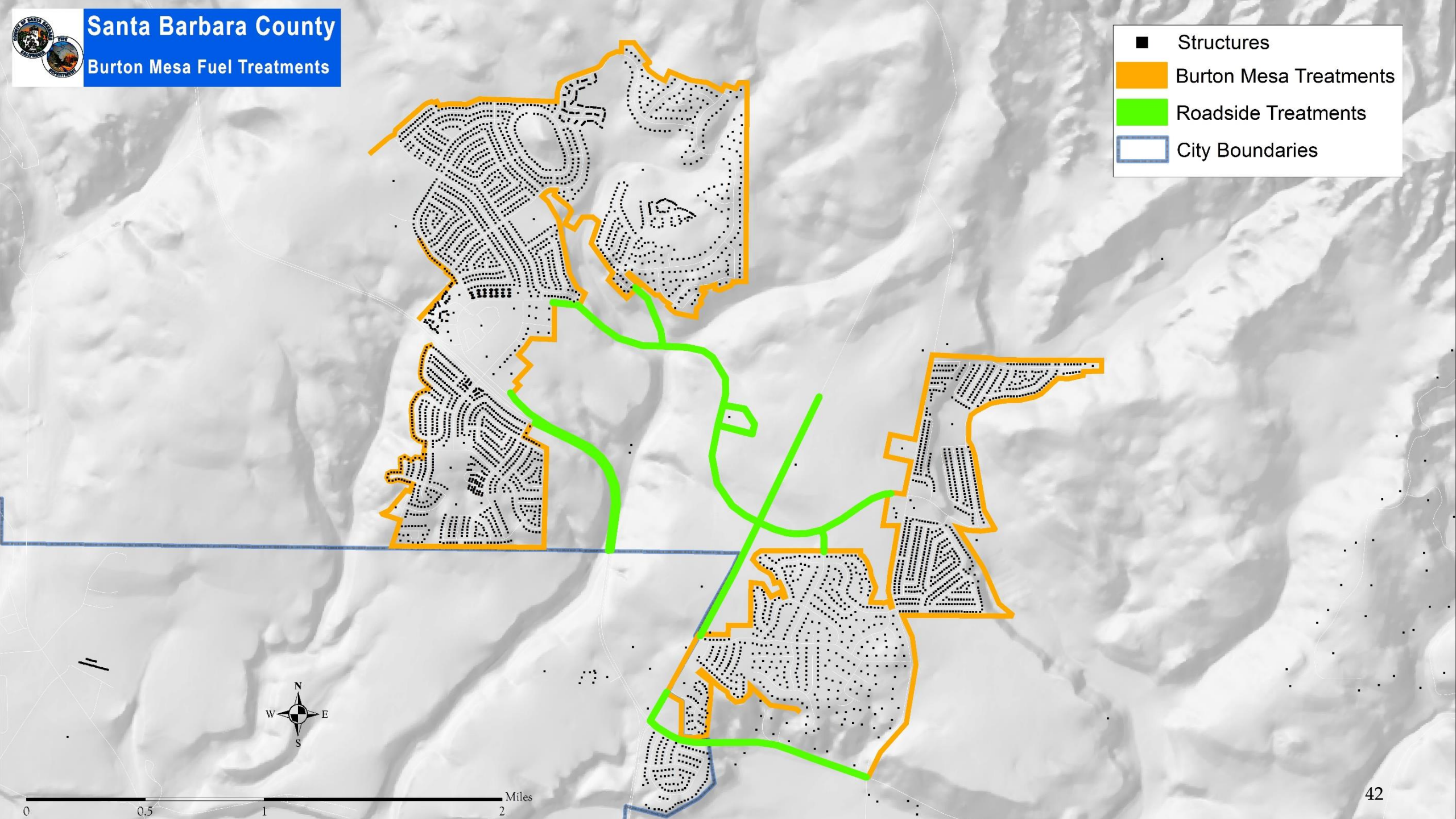




# Santa Barbara County

## Burton Mesa Fuel Treatments

- Structures
- Burton Mesa Treatments
- Roadside Treatments
- City Boundaries



# Recommendations



## **LANDSCAPE BASED:**

- **Increase the use of prescribed fire where practical with the goal of treating 500 to 1,000 acres of SRA lands annually**
- **Collaborate with the Los Padres National Forest to conduct prescribed fire projects across jurisdictional boundaries**
- **Research the applicability of prescribed herbivory in suitable areas**
- **Support land use policies that encourage and perpetuate agricultural greenbelts in the Wildland Urban Interface**
- **Utilize the Vegetation Treatment Program PEIR once certified**

# Recommendations



## **STRATEGIC PRE-FIRE:**

- **Collaborate with the Los Padres National Forest to continue development and maintenance of critical strategic fuel breaks as identified in the forest-wide Strategic Fuel Break Assessment**
- **Plan and implement strategic fuel breaks in SRA lands where needed to meet the goals of the State Strategic Fire Plan**
- **Increase the pace and scope of roadside fuel treatments in high fire hazard areas**

# Questions?



*Santa Barbara County Fire Department*

2018