

#1



RECEIVED

2024 FEB 29 P 3:47

# West Isla Vista Facility

**Santa Barbara County**

**Board of Supervisors**

**March 5th, 2024**

**Tricia Knight, TEK Consulting**

**Dewayne Bonham, Verizon Wireless RF Engineer**



Verizon confidential and proprietary. Unauthorized disclosure, reproduction or other use prohibited.

---

# Application Timeline

|                          |   |
|--------------------------|---|
| <b>October 1, 2019</b>   | CUP application filed for Trigo Road site (existing pole)                     |
| <b>July 24, 2020</b>     | SBAR application filed for Trigo Road site                                    |
| <b>August 8, 2020</b>    | SBAR hearing, SBAR requested review of alternative locations and designs      |
| <b>October 14, 2020</b>  | Planning Commission Hearing   |
| <b>October 26, 2020</b>  | Planning Commission Hearing # 2   |
| <b>December 2, 2020</b>  | Planning Commission neighborhood walk   |
| <b>January 13, 2021</b>  | Planning Commission Hearing # 3   |
| <b>2021 –2022</b>        | Verizon Wireless investigated alternative locations                           |
| <b>March 23, 2022</b>    | CUP application submitted for Fortuna Road site (new pole)                    |
| <b>May 3, 2022</b>       | Fortuna Road determined to be located outside the right -of-way and withdrawn |
| <b>October 26, 2022</b>  | Development plan application filed for Camino Lindo site                      |
| <b>November 21, 2022</b> | SBAR application filed for Camino Lindo site                                  |
| <b>February 3, 2023</b>  | SBAR denied Camino Lindo site   |
| <b>February 13, 2023</b> | Verizon Wireless appealed SBAR denial   |
| <b>March 31, 2023</b>    | SBAR approves conceptual review for original Trigo Road site                  |
| <b>June 16, 2023</b>     | SBAR denial of Trigo Rd. Application and subsequent appeal by Verizon         |
| <b>December 6, 2023</b>  | Planning Commission Appeal Hearing and Approval of Trigo Location             |



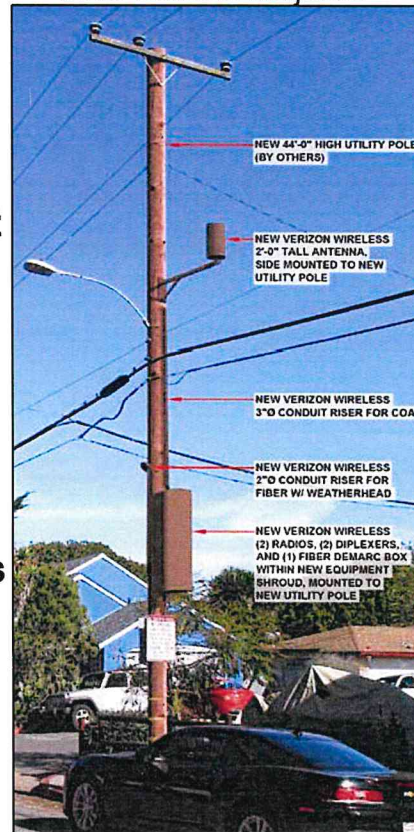
Verizon confidential and proprietary. Unauthorized disclosure, reproduction or other use prohibited.

# Facility Design

- Existing utility pole of 44 feet in height.
- Cylindrical antenna mounted mid -pole, 2 feet tall, 14.6 inch diameter at at height of 30ft-8 inches
- Radios concealed inside narrow shroud on side of pole 70 inches tall, 20 inches wide, and 20 inches deep at a heigh of 17ft-6 inches
- Limited ground space in right-of-way requires placement of equipment on pole



Looking Northeast  
from Camino Majorca



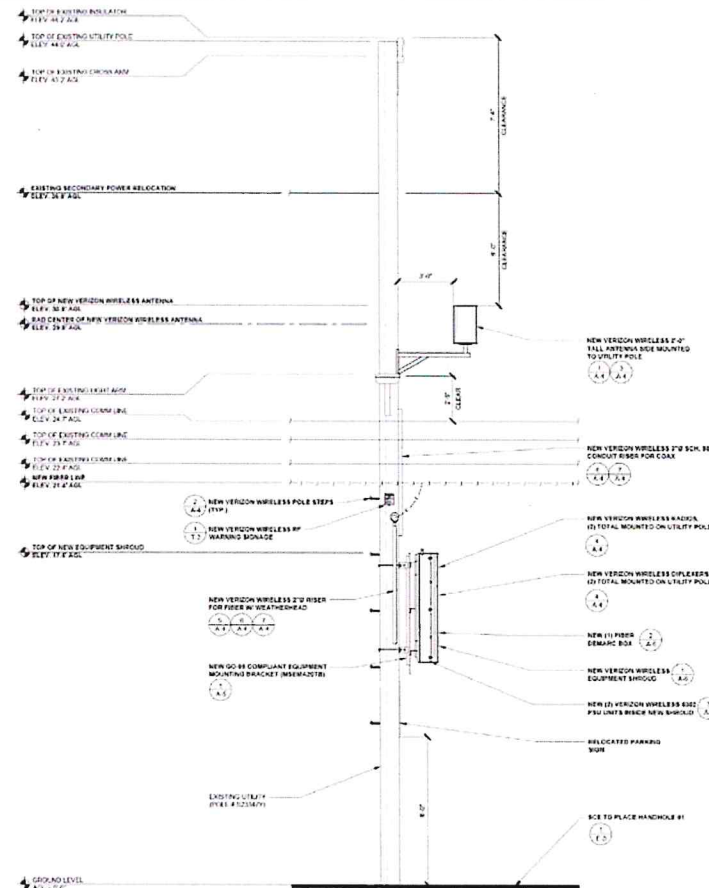
Looking Southwest  
from Sabado Tarde



Verizon confidential and proprietary. Unauthorized disclosure, reproduction or other use prohibited.

# Facility Design

- Existing utility pole of 44 feet in height.
- Cylindrical antenna mounted mid-pole, 2 feet tall, 14.6 inch diameter
- Radios concealed inside narrow shroud on side of pole 70 inches tall, 20 inches wide, and 20 inches deep
- Limited ground space in right-of-way requires placement of equipment on pole



Verizon confidential and proprietary. Unauthorized disclosure, reproduction or other use prohibited.

# Service Gap

- Gap in reliable coverage in west Isla Vista area and UCSB faculty housing to west
- Existing Isla Vista facility 0.7 miles east cannot provide reliable dominant signal to gap area
- Existing Isla Vista facility has reached capacity exhaustion



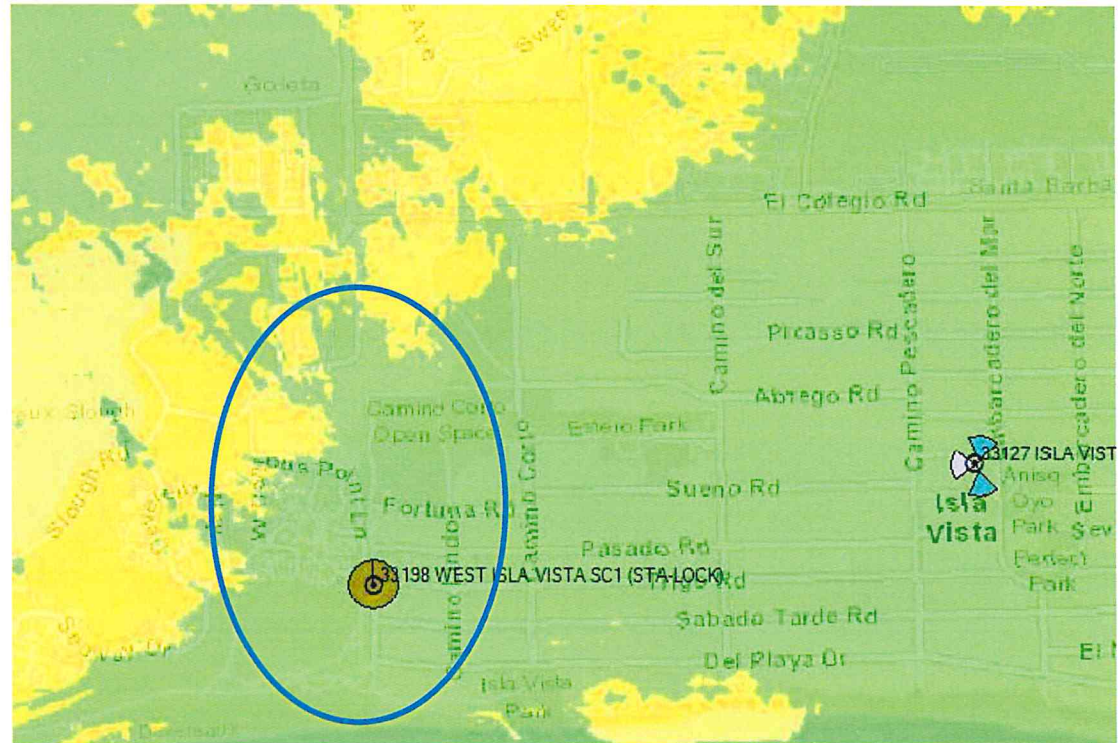
| RSRP 700 MHz Coverage |                            |
|-----------------------|----------------------------|
|                       | In-building $\geq -85$ dBm |
|                       | In-vehicle $\geq -95$ dBm  |
|                       | Outdoor $\geq -105$ dBm    |
|                       | Unreliable $< -105$ dBm    |



Verizon confidential and proprietary. Unauthorized disclosure, reproduction or other use prohibited.

## Improved Service

- New reliable coverage to 0.46 square miles with a population of 2,100
- Strong new dominant signal for local customers
- Offloads traffic from exhausted existing facility, improving network performance



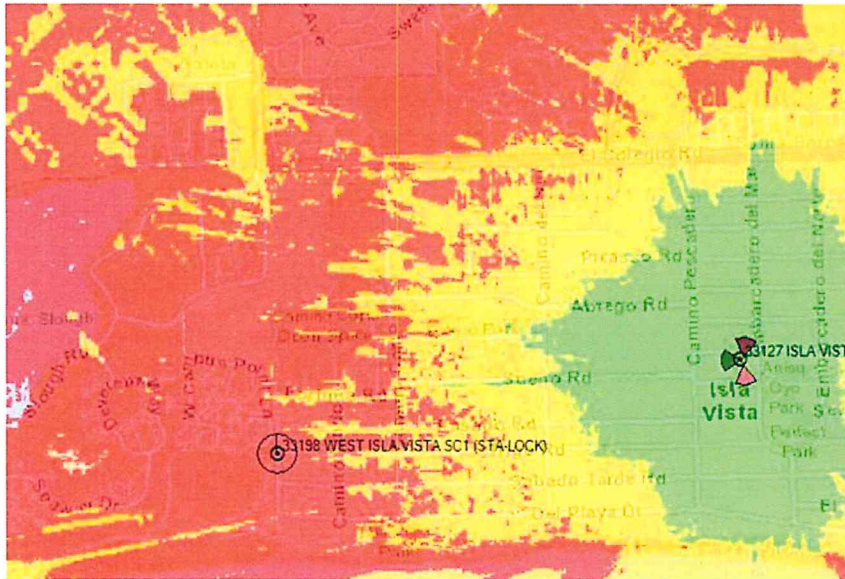
| RSRP 700 MHz Coverage |                            |
|-----------------------|----------------------------|
|                       | In-building $\geq -85$ dBm |
|                       | In-vehicle $\geq -95$ dBm  |
|                       | Outdoor $\geq -105$ dBm    |
|                       | Unreliable $< -105$ dBm    |



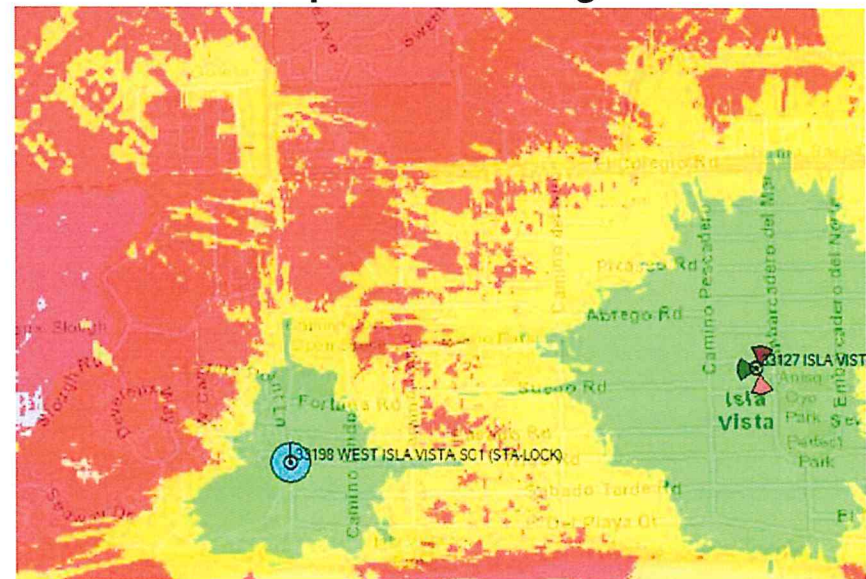
Verizon confidential and proprietary. Unauthorized disclosure, reproduction or other use prohibited.

# Mid-Band Relieves Capacity Exhaustion

## Existing Coverage



## Proposed Coverage



| RSRP 1900 MHz Coverage |                            |
|------------------------|----------------------------|
|                        | In-building $\geq -85$ dBm |
|                        | In-vehicle $\geq -95$ dBm  |
|                        | Outdoor $\geq -105$ dBm    |
|                        | Unreliable $< -105$ dBm    |



Verizon confidential and proprietary. Unauthorized disclosure, reproduction or other use prohibited.

SCE Rules: 2ft from Comm;  
6ft power, 2ft light and does  
not allow locating on poles  
with guy wires

## Alternatives

- Verizon Wireless evaluated 14 alternative locations, including new poles
- Alternatives discounted because:
  - Lack of pole space (2, 3)
  - Taller pole required (4, 7)
  - Violates utility pole safety rules (5, 6, 7)
  - SBAR denied new pole (8)
  - Not in right-of-way (9, 10, 11)
  - Not less intrusive (12, 13, 14)





# Principal Factors to Discount Alternatives

|    |  | Lack of pole space | Taller pole required | Utility pole safety rules | SBAR denied new pole | Not in right-of-way | Not less intrusive |
|----|--|--------------------|----------------------|---------------------------|----------------------|---------------------|--------------------|
| 1  | Camino Majorca @ Trigo (Proposed Facility) |                    |                      |                           |                      |                     |                    |
| 2  | Camino Majorca Existing facility on pole   | X                  |                      |                           |                      |                     |                    |
| 3  | Pasado Road Existing facility on pole      | X                  |                      |                           |                      |                     |                    |
| 4  | Camino Majorca Guy pole                    |                    | X                    |                           |                      |                     | X                  |
| 5  | Trigo Road Utility pole                    |                    |                      | X                         |                      |                     |                    |
| 6  | Camino Majorca Utility pole                |                    |                      | X                         |                      |                     |                    |
| 7  | Sabado Tarde Utility pole                  |                    | X                    | X                         |                      |                     | X                  |
| 8  | Camino Lindo New pole                      |                    |                      |                           | X                    |                     | X                  |
| 9  | Fortuna Road New pole                      |                    |                      |                           |                      | X                   |                    |
| 10 | UCSB housing parcel                        |                    |                      |                           |                      | X                   |                    |
| 11 | Fortuna Road Utility pole                  | X                  |                      |                           |                      | X                   |                    |
| 12 | Fortuna Road Utility pole                  |                    |                      |                           |                      |                     | X                  |
| 13 | Fortuna Road Utility pole                  |                    |                      |                           |                      |                     | X                  |
| 14 | Fortuna Road Utility pole                  |                    |                      |                           |                      |                     | X                  |

## Verizon Community Outreach

- Verizon Wireless engaged in additional community outreach to gain feedback on potential Fortuna rd. colocation on existing poles.
- Verizon reached out to the neighboring homes on Fortuna road.
- 3 responses were received by email.
  - 2 neighbors were opposed to a proposed site on Fortuna.
  - 1 neighbor was in support of improved service in the area.

