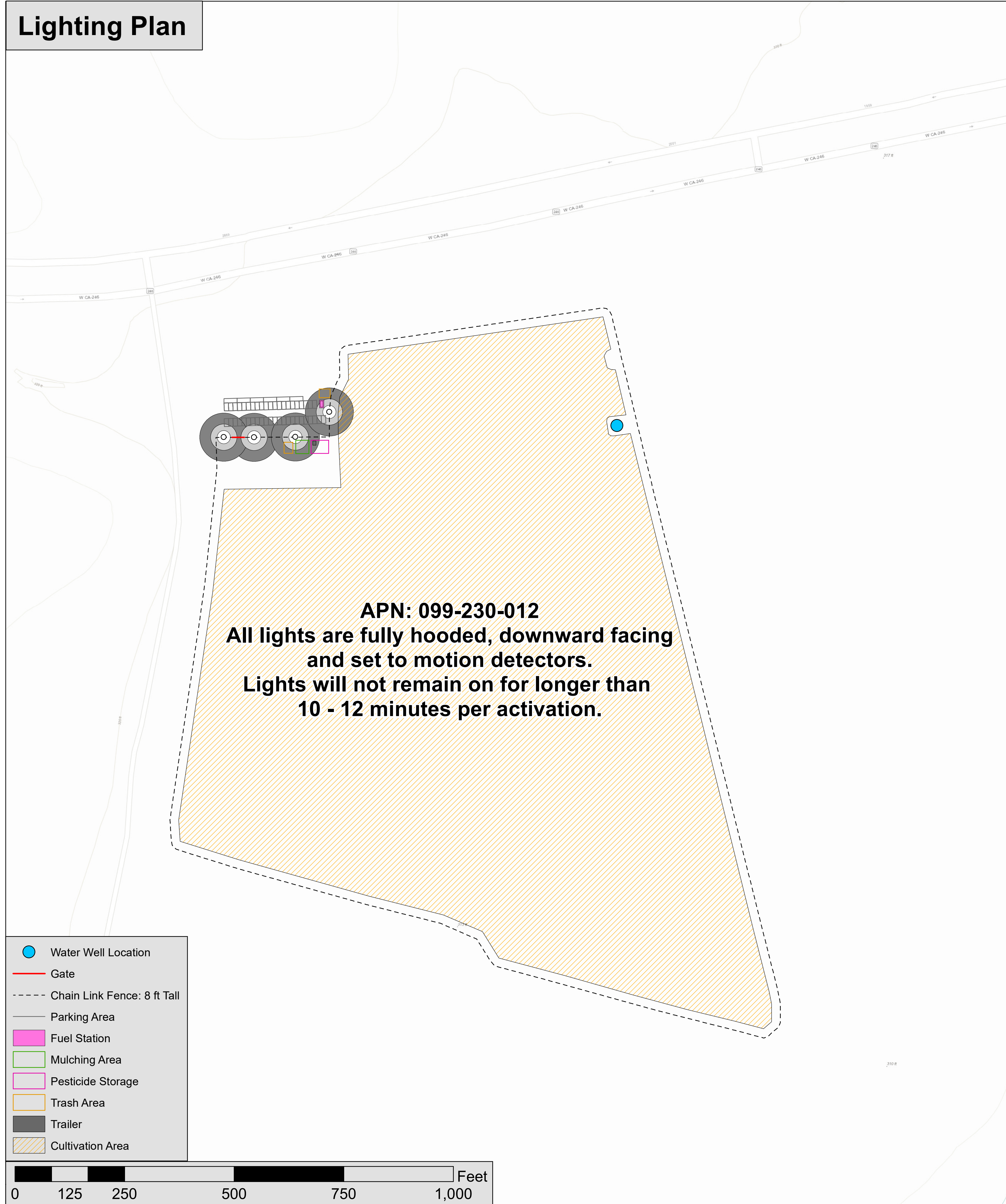
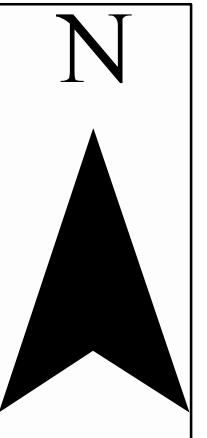


# Lighting Plan



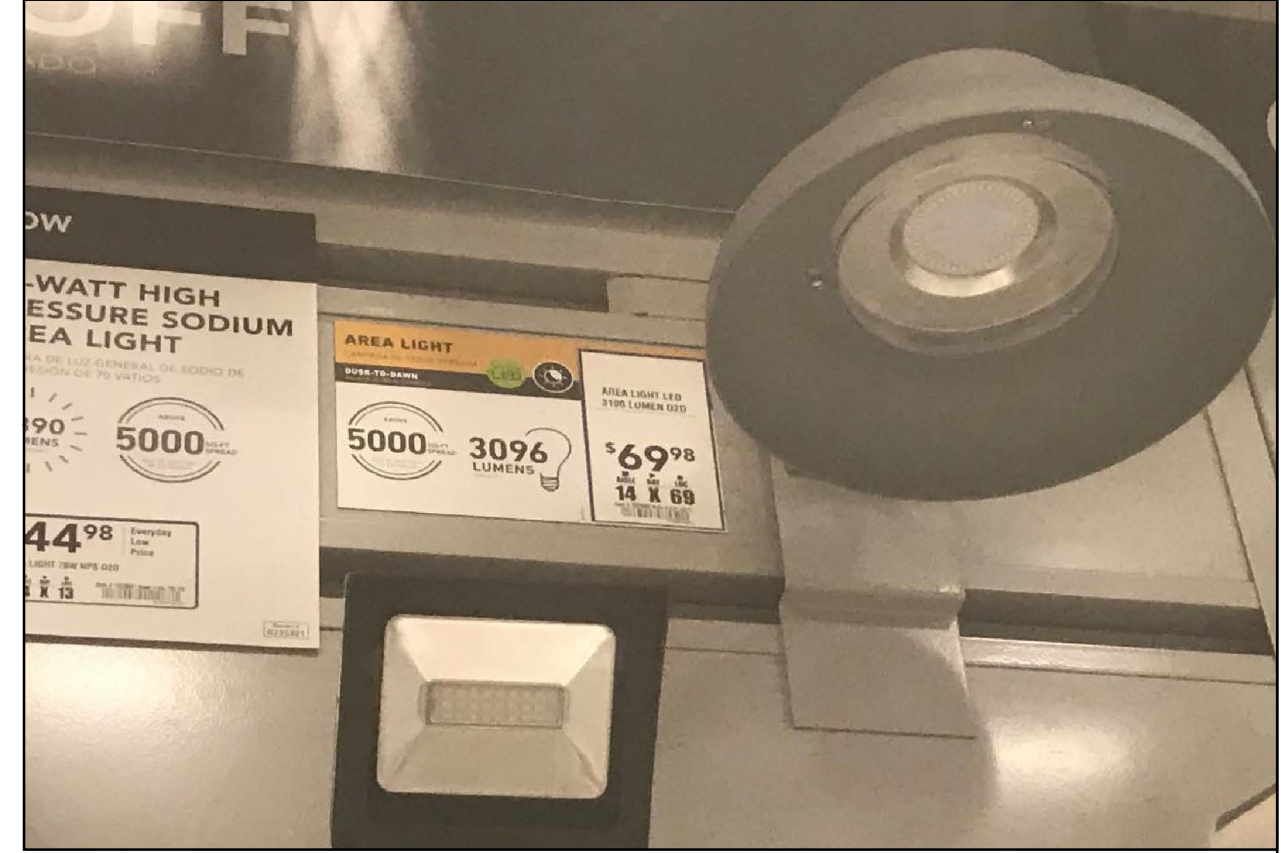
# Santa Rita Valley AG: Lighting Plan

7680 W Hwy 246, Buellton, CA  
 APN: 099-230-012, Owner: Sebastiano Sterpa



## Lighting Plan

The applicant will not use artificial light as part of its cultivation plan. Lights will be used for site security only. Cultivation will take place during daylight hours. Security lighting will be located at the entry gate set to a motion sensor. The light will be directed so that an individual can see the combination lock and the security camera will have a clear picture of the individual opening the gate.



Lights:  
 Lithonia Lighting OLAL LED Gray  
 Outdoor Integrated LED 4000K  
 Area Light with Dusk to Dawn Photocell  
 Model# OLAL LED P1 40K 120  
 PE DNA HP17 M4

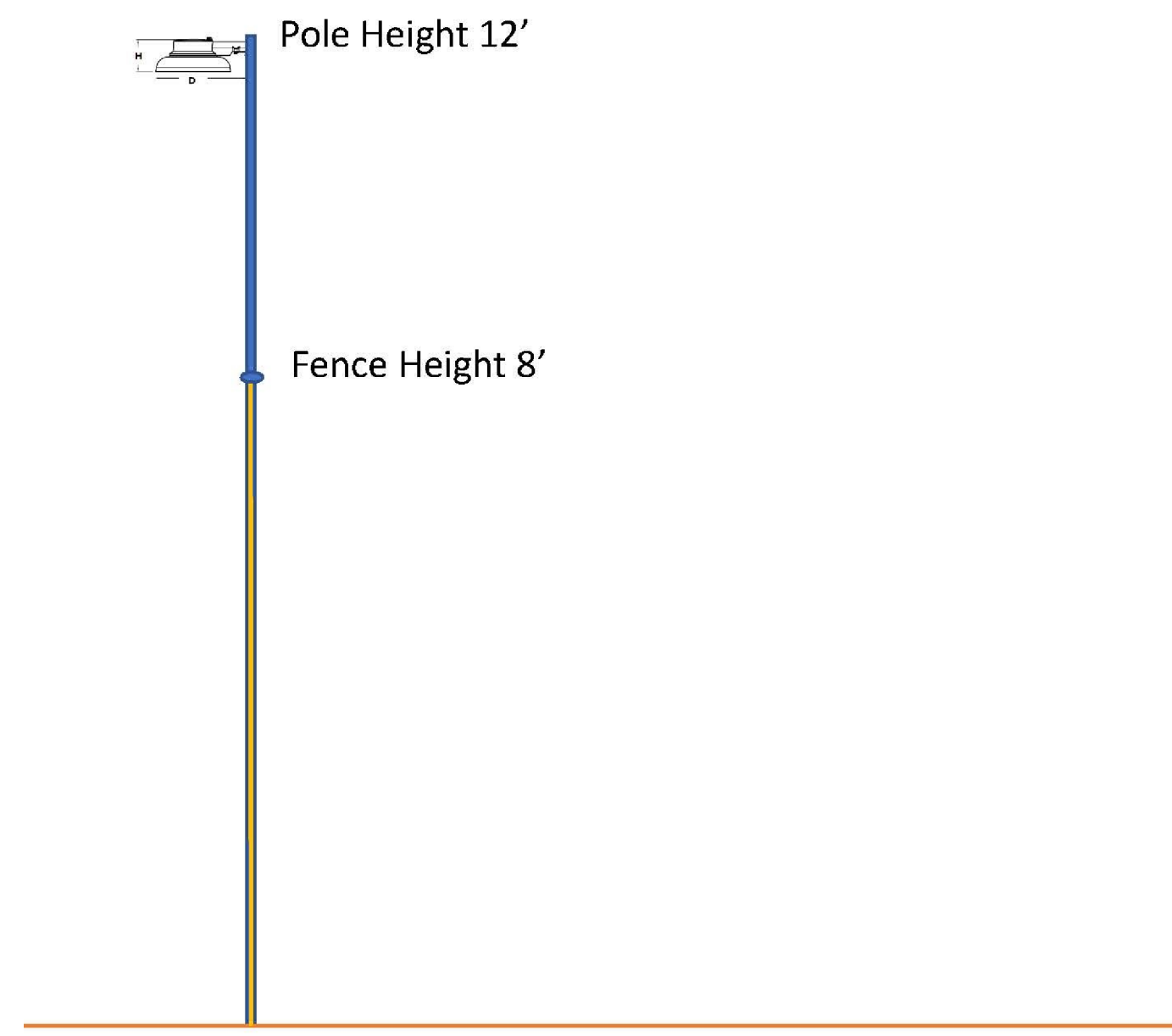
The map displays sufficient coverage to illuminate the perimeter of the fence should the Sheriff's Office require that degree of lighting. The applicant would prefer no perimeter lighting. The coverage area is based on mounting the lights at 12'.

Specifications			
Light Coverage Area	Large area (+5000 sq. ft.)	Weight (lbs.)	2.45
Volts	120	Manufacturer Color/Finish	Gray
Number of Light Heads	1	Fixture Color Family	Gray
Type	Area light	Fixture Finish	Matte
Bulb(s) Included	✓	Wattage	31
Bulb Type	Integrated LED	Wattage Equivalent	100
Light Bulb Base Type	LED	UL Safety Listing	✓
Recommended Light Bulb Shape	LED	CSA Safety Listing	X
Color Temperature (Kelvins)	4000	ETL Safety Listing	X
Power Source	Hardwired	ENERGY STAR Certified	✓
Material	Aluminum	Lowe's Exclusive	X
Height (Inches)	5.25	Warranty	5-year limited
Width (Inches)	11		
Depth (Inches)	13.5		

## Lighting Coverage and Mounting

### Lights Mounted at 12 ft

- Mounted Hooded Light
- 15 ft Radius - Bright Light
- 30 ft Radius - Some Light
- 55 ft Radius - Dim Light



Santa Rita Valley AG, Lighting Plan  
 7680 W Hwy 246, Buellton, CA