

SANTA BARBARA COUNTY FLOOD CONTROL AND WATER CONSERVATION DISTRICT

DEBRIS BASIN RESTORATION PROJECTS THOMAS FIRE 1-9 DEBRIS FLOW INCIDENT

18STM1

IN THE MONTECITO AND CARPINTERIA AREAS OF SANTA BARBARA COUNTY, CALIFORNIA



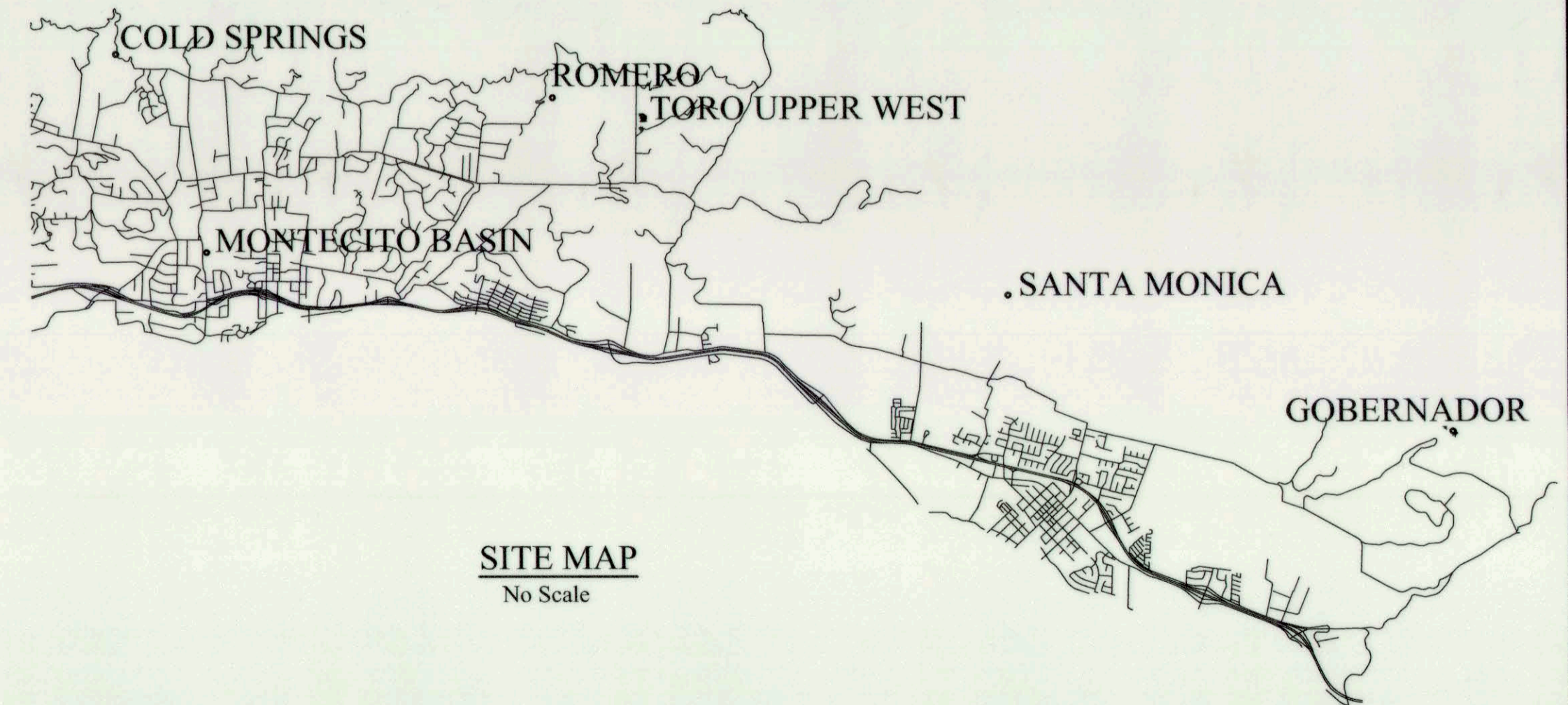
DISTRICT BOARD OF DIRECTORS

FIRST DISTRICT	Das Williams
SECOND DISTRICT	Janet Wolf
THIRD DISTRICT	Joan Hartmann
FOURTH DISTRICT	Peter Adam
FIFTH DISTRICT	Steve Lavagnino

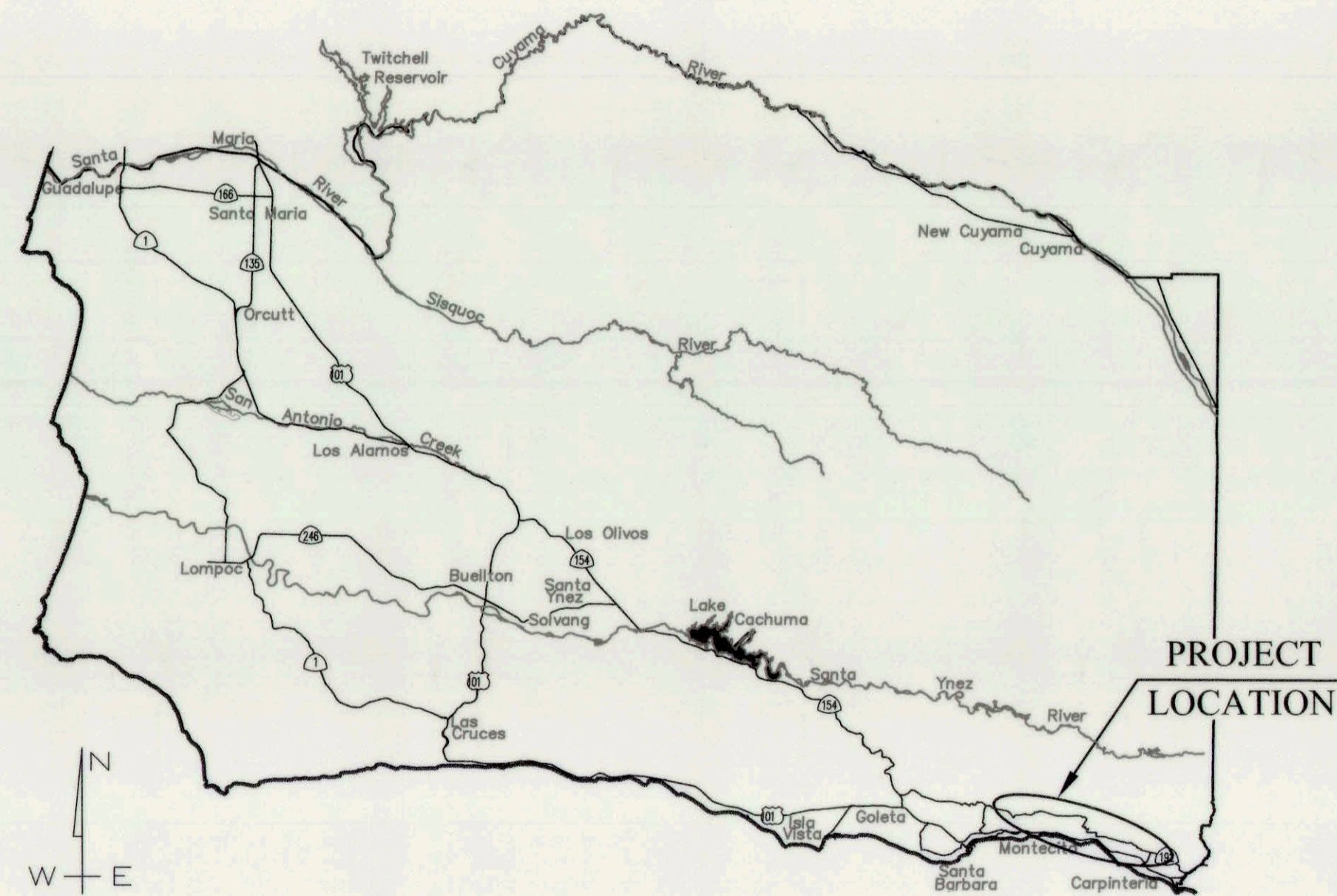
CHAIR, BOARD OF DIRECTORS original to be signed
Das Williams

INDEX TO SHEETS

DESCRIPTION	SHEET NO.
TITLE SHEET	1
GENERAL INFORMATION	2
COLD SPRINGS DEBRIS BASIN	3
MONTECITO DEBRIS BASIN	4
ROMERO DEBRIS BASIN	5
TORO UPPER WEST DEBRIS BASIN	6
SANTA MONICA DEBRIS BASIN	7
GOVERNADOR DEBRIS BASIN	8
DETAILS	9-10



SITE MAP
No Scale



VICINITY MAP
No Scale

UNAUTHORIZED CHANGE OR USE:
THE SANTA BARBARA COUNTY FLOOD CONTROL & WATER CONSERVATION DISTRICT AND ITS
EMPLOYEES WILL NOT BE RESPONSIBLE FOR OR LIABLE FOR UNAUTHORIZED CHANGE TO OR
USE OF THESE PLANS. ALL PROPOSED CHANGES TO THE PLANS MUST BE PRESENTED IN
WRITING TO THE DISTRICT AND APPROVED IN WRITING BY THE DISTRICT PRIOR TO IMPLEMENTATION
OF ANY SUCH CHANGE OR USE.
CONTRACTOR'S LICENSE:
THE CONTRACTOR SHALL POSSESS THE CLASS (OR CLASSES) OF LICENSE AS SPECIFIED
IN THE "NOTICE" APPEARING ON THIS SHEET.

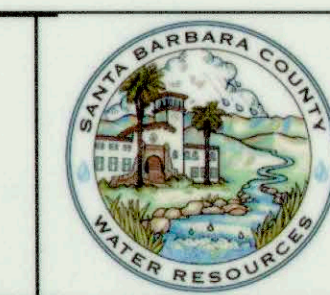
REVISIONS			
NO.	DESCRIPTION	DATE	APR



DESIGNED BY: *Matthew G. Grady* 8/14/18
FLOOD CONTROL DESIGN ENGINEER DATE
REVIEWED BY: *Matthew S. Xeno* 8-14-18
FLOOD CONTROL ENGINEERING MANAGER DATE
REVIEWED BY: *Matthew S. Xeno* 8-14-18
FLOOD CONTROL DEPUTY DIRECTOR DATE

REVIEWED BY: original to be signed
MAINTENANCE SUPERINTENDENT DATE
REVIEWED BY: *Margaret Spencer* 8/14/18
ENVIRONMENTAL SERVICES MANAGER DATE

SANTA BARBARA COUNTY
FLOOD CONTROL AND
WATER CONSERVATION DISTRICT
130 E. VICTORIA STREET
SANTA BARBARA, CA 93101
(805) 568-3440



DEBRIS BASIN RESTORATION PROJECTS
THOMAS FIRE 1-9
DEBRIS FLOW INCIDENT
AREAS OF MONTECITO AND CARPINTERIA
SANTA BARBARA COUNTY, CALIFORNIA

TITLE SHEET

DESIGNED BY: MG
DRAWN BY: OR
CHECKED BY: JF
O-1140
SHEET 1 OF 10
Filename: BASINS REPAIR.DWG

STANDARD DETAILS AND PLANS LIST

STANDARD NO.	DESCRIPTION
--------------	-------------

STATE DEPARTMENT OF TRANSPORTATION STANDARD PLANS (2015 EDITION)
 The Standard Plan sheets applicable to this contract include, but are not limited to those indicated below. The Revised Standard Plans (RSP) and New Standard Plans (NSP) which apply are attached to the contract.

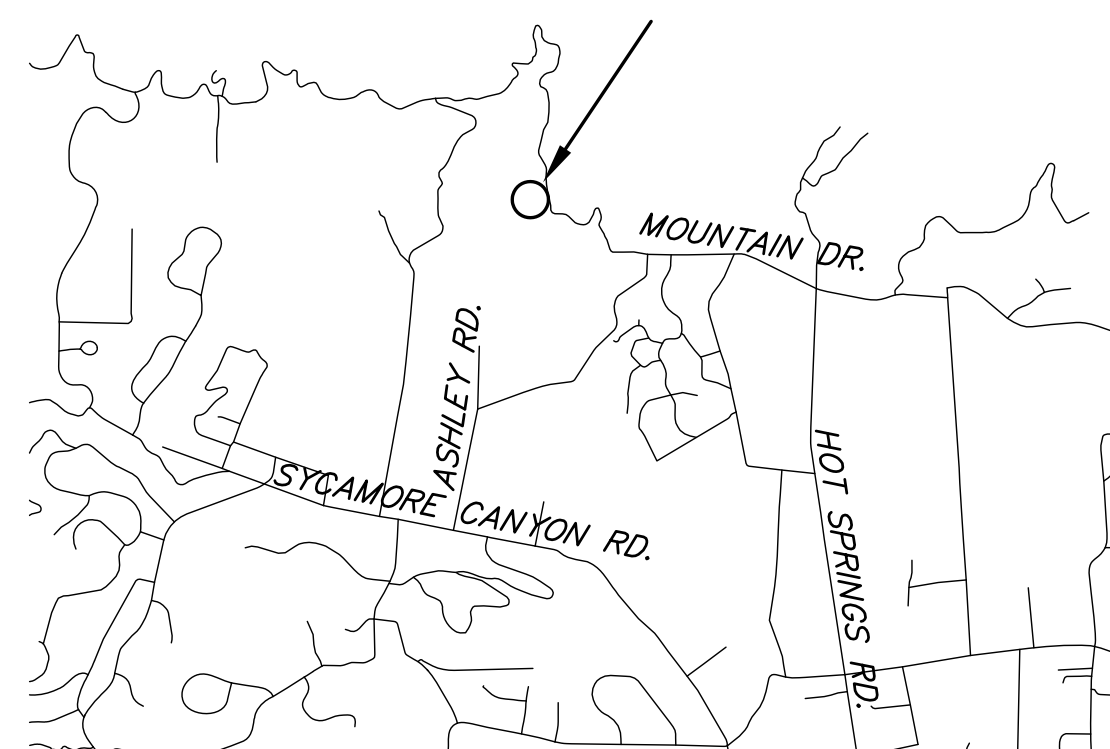
A3A-A3B	ACRONYMS AND ABBREVIATIONS
A10C-A10E	LINES AND SYMBOLS
A85A	CHAIN LINK FENCE DETAILS
A86	BARBED WIRE AND WIRE MESH FENCES
A77L2	MIDWEST GUARDRAIL SYSTEM STANDARD RAILING SECTION (STEEL POST WITH NOTCHED WOOD OR NOTCHED RECYCLED PLASTIC BLOCK)
B11-7	CHAIN LINK RAILING
B11-47	CABLE RAILING

AMERICAN PUBLIC WORKS ASSOCIATION STANDARD PLANS

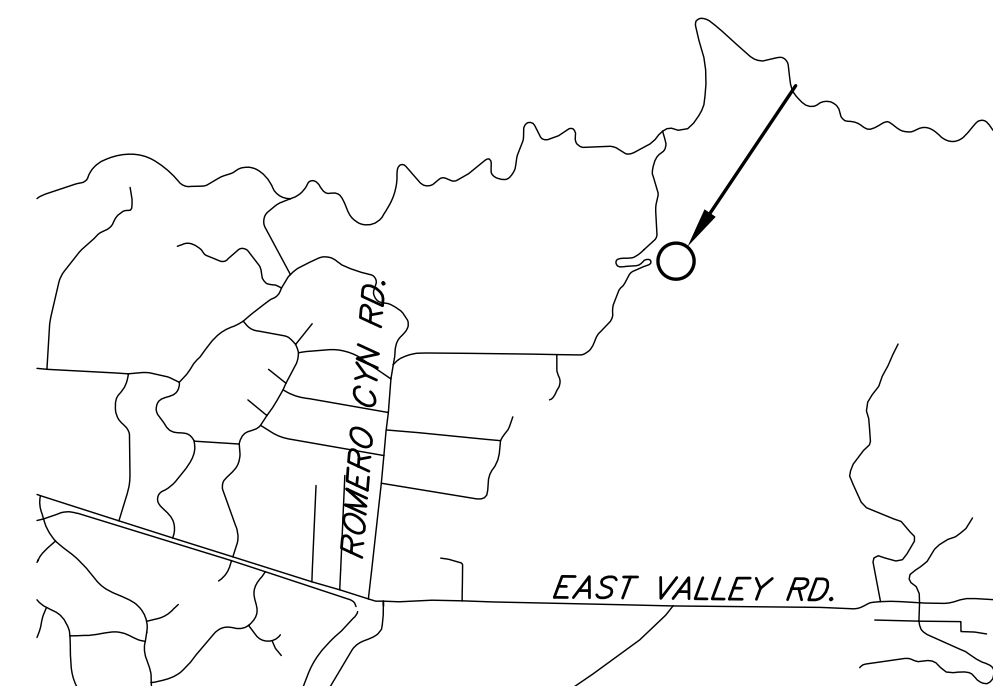
361-2	TRASH RACK
635-3	STEEL STEP

ABBREVIATIONS

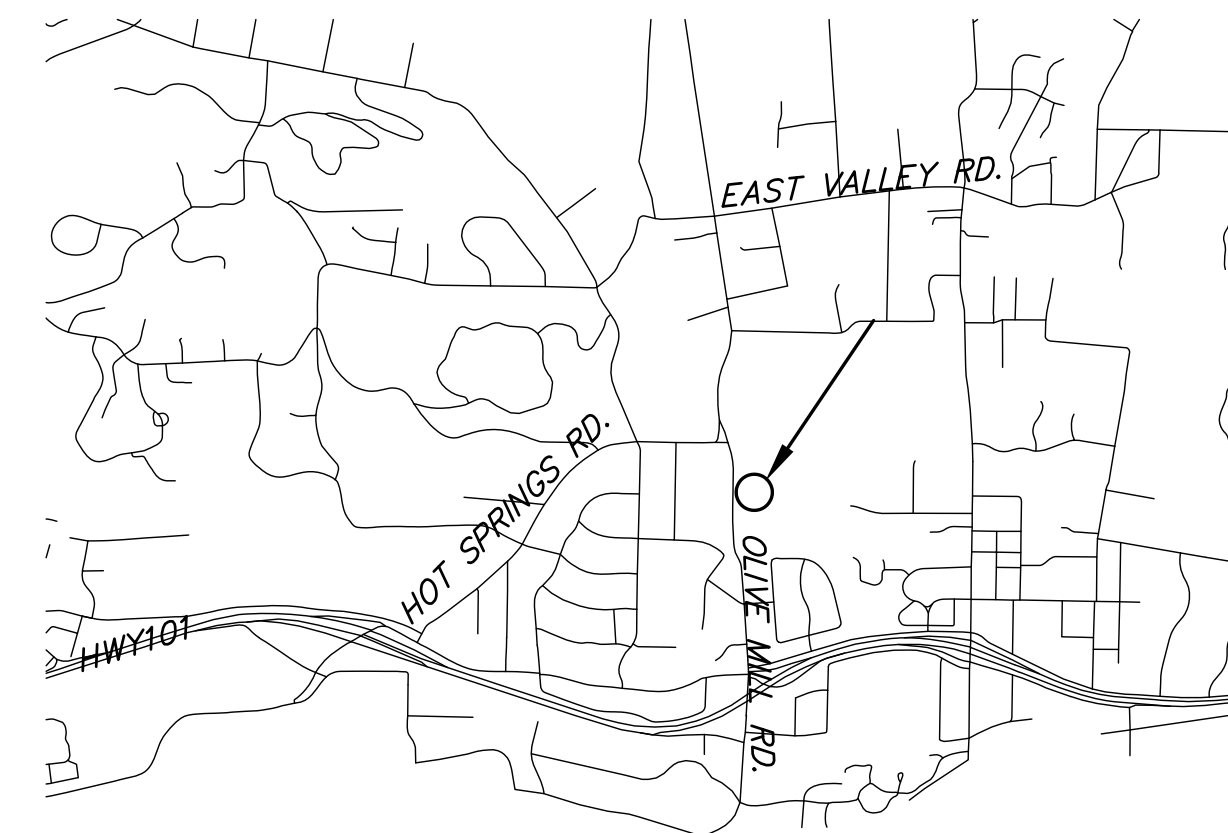
APN	ASSESSORS PARCEL NUMBER	IN	INCH
APWA	AMERICAN PUBLIC WORKS ASSOC.	MJ	MECHANICAL JOINT
AT	ARCHITECTURAL TEXTURE	n	MANNING'S COEFFICIENT
BW	BOTH WAYS	N	NORTH OR NORTHING
CFS	CUBIC FEET PER SECOND	OC	ON CENTER
CL or C/L	CENTER LINE	PK	PK NAIL
CALTRANS	STATE OF CALIFORNIA DEPARTMENT OF TRANSPORTATION	Q	FLOW VELOCITY
COUNTY	COUNTY OF SANTA BARBARA	R1	RECORD PER BOOK NN, PAGE NN OF MAPS
CP	CONTROL POINT	S	SEWER OR SLOPE OR SOUTH
DI	DUCTILE IRON OR DROP INLET	S	SDMH
DW	DRIVEWAY	SH	SHINER
E	EAST OR EASTING	SPK	SPIKE
EG	EXISTING GROUND	S/W	SIDEWALK
EGL	ENERGY GRADE LINE	TW or tw	TOP OF WALL
EL	ELEVATION	TCE	TEMPORARY CONSTRUCTION EASEMENT
EP	EDGE OF PAVEMENT	TBM	TEMPORARY BENCH MARK
ELEC	ELECTRIC	TSW	TOP OF SIDEWALK
FD	FOUND	TP	TOP OF PAVEMENT
FT	FEET	W or WL	WATER LINE
G	GAS LINE	WF	WALL FACE
GB	GRADE BREAK	WWF	WELDED WIRE FABRIC
HDPE	HIGH DENSITY POLYETHYLENE	V	VELOCITY
HGL	HYDRAULIC GRADE LINE	VB	VALVE BOX
IP	IRON PIPE		



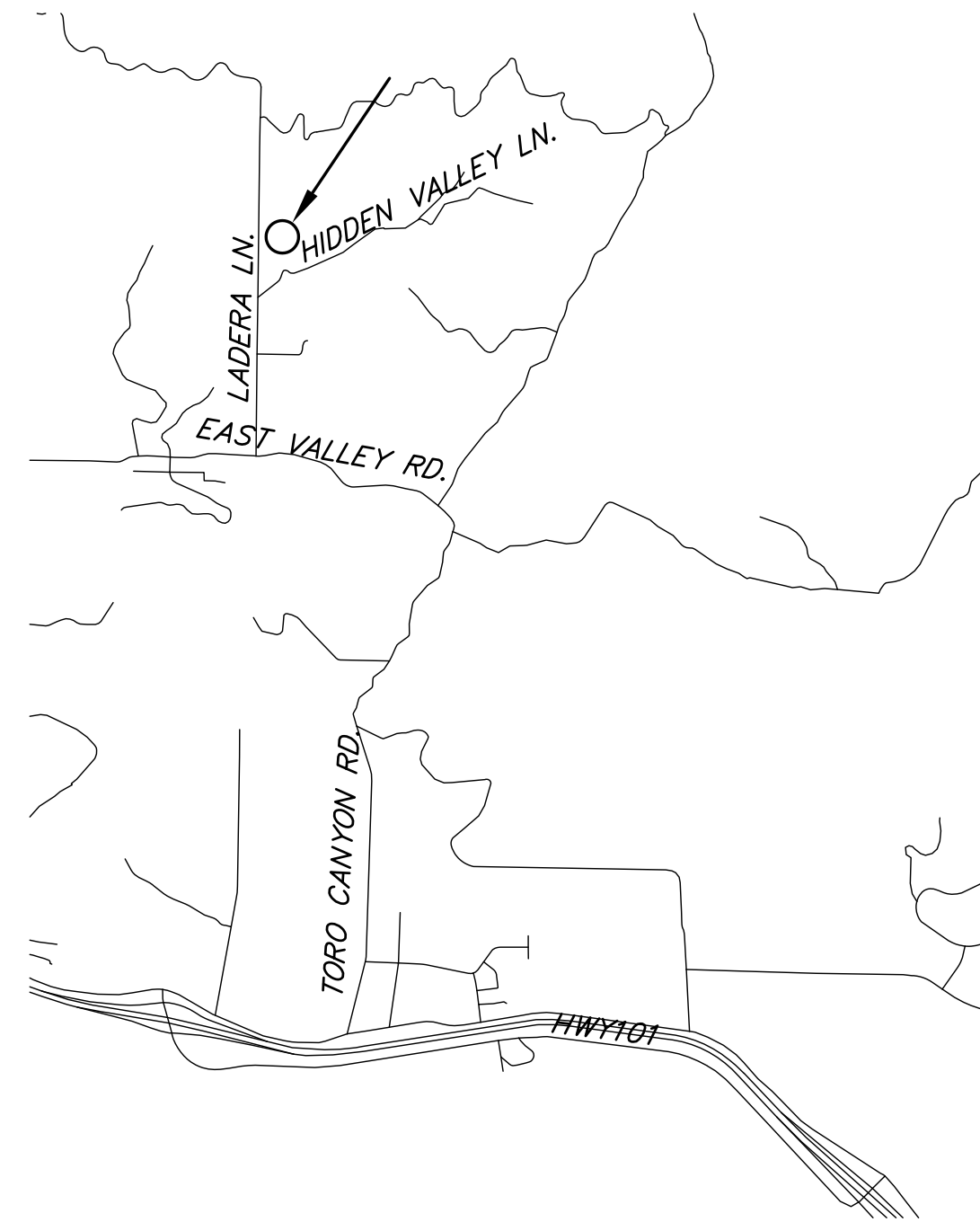
COLD SPRINGS DEBRIS BASIN
SCALE: 1" = 2000'



ROMERO DEBRIS BASIN
SCALE: 1" = 2000'



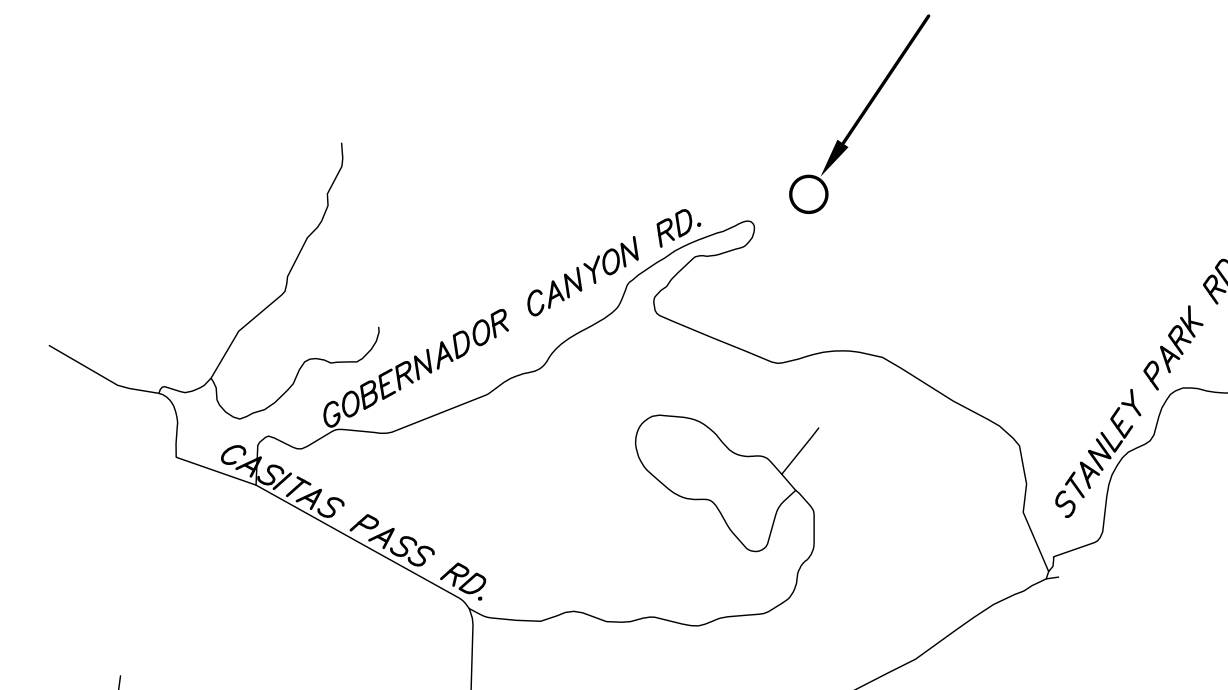
MONTECITO DEBRIS BASIN
SCALE: 1" = 2000'



TORO UPPER WEST DEBRIS BASIN
SCALE: 1" = 2000'



SANTA MONICA DEBRIS BASIN
SCALE: 1" = 2000'

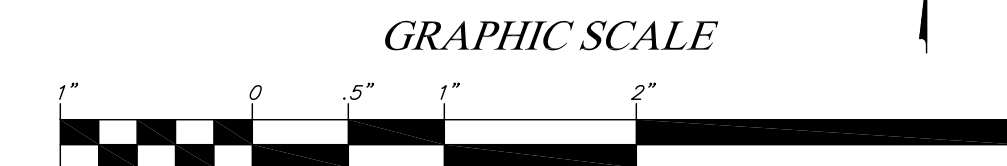


GOBERNADOR DEBRIS BASIN
SCALE: 1" = 2000'

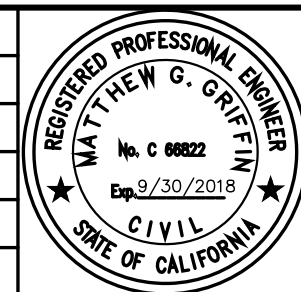
ALL UNDERGROUND UTILITIES SHOWN ARE PLOTTED BASED ON INFORMATION PROVIDED BY OTHERS, AND ARE APPROXIMATE. OVERHEAD UTILITIES ARE NOT SHOWN.

THE SANTA BARBARA COUNTY FLOOD CONTROL DISTRICT IS NOT RESPONSIBLE FOR THE ACCURACY OF THIS INFORMATION. CONTRACTOR SHALL NOTIFY UNDERGROUND SERVICE ALERT A MINIMUM OF TWO WORKING DAYS PRIOR TO COMMENCEMENT OF ANY EXCAVATION @ 1-800-422-4133.

UNAUTHORIZED CHANGES OR USES:
 THE SANTA BARBARA COUNTY FLOOD CONTROL & WATER CONSERVATION DISTRICT AND ITS EMPLOYEES WILL NOT BE RESPONSIBLE FOR, OR LIABLE FOR, UNAUTHORIZED CHANGES TO OR USES OF THESE PLANS. ALL PROPOSED CHANGES TO THE PLANS MUST BE PRESENTED IN WRITING TO THE DISTRICT AND APPROVED IN WRITING BY THE DISTRICT PRIOR TO IMPLEMENTATION OF ANY SUCH CHANGE OR USE.



REVISIONS			
NO.	DESCRIPTION	DATE	APR



DESIGNED BY: *Matt Griffin* 8/14/2018
 FLOOD CONTROL DESIGN ENGINEER DATE

SANTA BARBARA COUNTY
 FLOOD CONTROL AND
 WATER CONSERVATION DISTRICT
 130 E. VICTORIA STREET
 SANTA BARBARA, CA 93101
 (805) 568-3440



DEBRIS BASIN RESTORATION PROJECTS
 THOMAS FIRE 1-9
 DEBRIS FLOW INCIDENT
 AREAS OF MONTECITO AND CARPINTERIA
 SANTA BARBARA COUNTY, CALIFORNIA

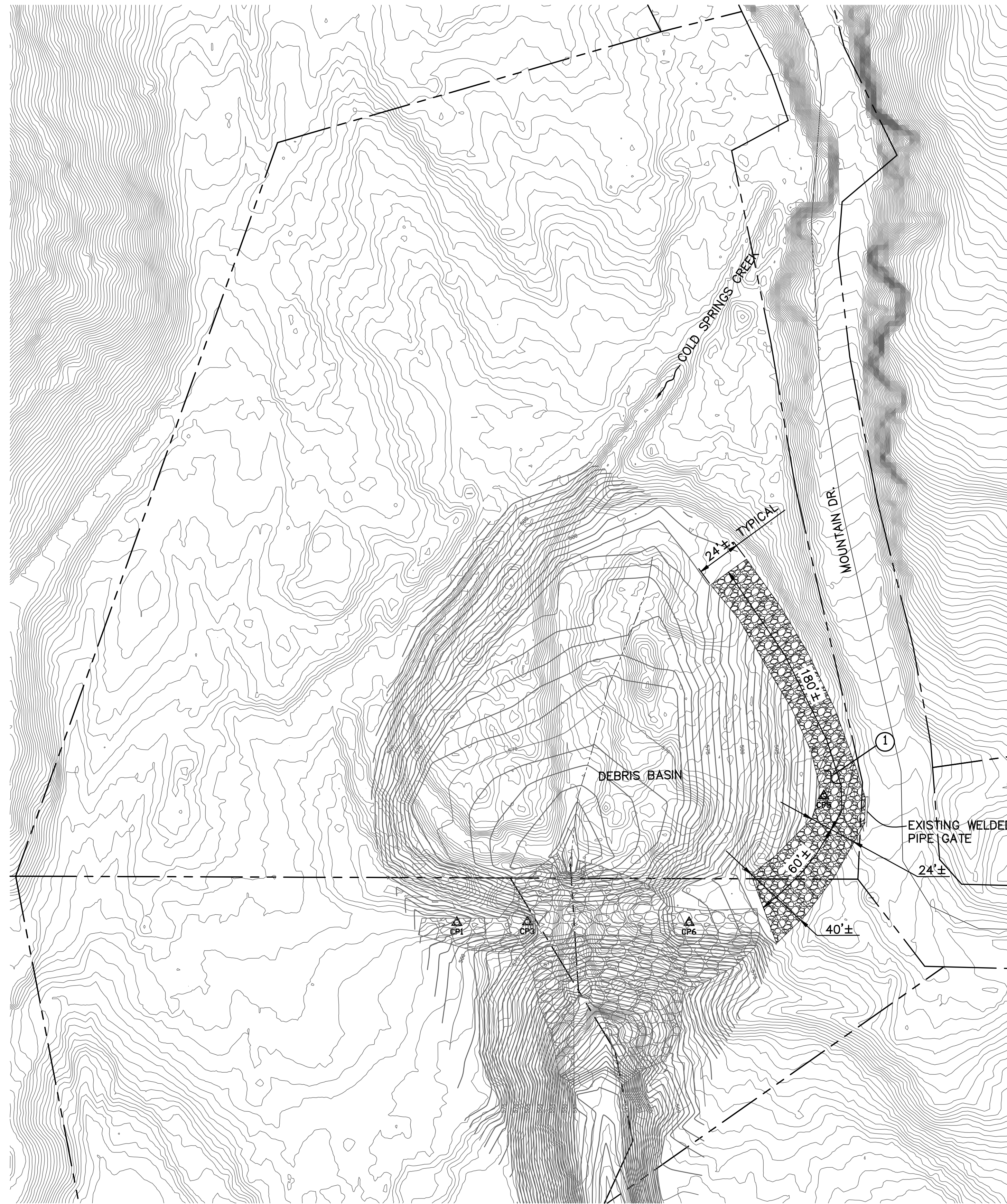
GENERAL INFORMATION SHEET

DESIGNED BY: MG
 DRAWN BY: OR
 CHECKED BY: JF

O-1140

SHEET 2 OF 10

Filename: Basins repair.DWG



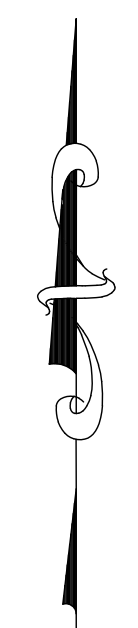
CONSTRUCTION NOTES

- ① Reconstruct gravel access road per detail on sheet 9. Coordinate lines and grades with the Engineer for approval.

GENERAL NOTES

- 1. The background contours were created from Lidar data taken post mud-flow event. (Towill, Inc 1/17/2018-1/22/2018). Property lines are derived from Assessor Parcel information and are shown for information only.
- 2. The Basin Grading contours are for reference only, and should not be used to obtain coordinate values, bearings or distances.

PLAN
SCALE: 1" = 40'



GRAPHIC SCALE



ALL UNDERGROUND UTILITIES SHOWN ARE PLOTTED BASED ON INFORMATION PROVIDED BY OTHERS, AND ARE APPROXIMATE. OVERHEAD UTILITIES ARE NOT SHOWN.
THE SANTA BARBARA COUNTY FLOOD CONTROL DISTRICT IS NOT RESPONSIBLE FOR THE ACCURACY OF THIS INFORMATION. CONTRACTOR SHALL NOTIFY UNDERGROUND SERVICE ALERT A MINIMUM OF TWO WORKING DAYS PRIOR TO COMMENCEMENT OF ANY EXCAVATION @ 1-800-422-4133.

UNAUTHORIZED CHANGES OR USES:
THE SANTA BARBARA COUNTY FLOOD CONTROL & WATER CONSERVATION DISTRICT AND ITS EMPLOYEES WILL NOT BE RESPONSIBLE FOR, OR LIABLE FOR, UNAUTHORIZED CHANGES TO OR USES OF THESE PLANS. ALL PROPOSED CHANGES TO THE PLANS MUST BE PRESENTED IN WRITING TO THE DISTRICT AND APPROVED IN WRITING BY THE DISTRICT PRIOR TO IMPLEMENTATION OF ANY SUCH CHANGE OR USE.

REVISIONS			
NO.	DESCRIPTION	DATE	APR



DESIGNED BY: *Matt Griffin* 8/14/2018
FLOOD CONTROL DESIGN ENGINEER DATE

SANTA BARBARA COUNTY
FLOOD CONTROL AND
WATER CONSERVATION DISTRICT
130 E. VICTORIA STREET
SANTA BARBARA, CA 93101
(805) 568-3440

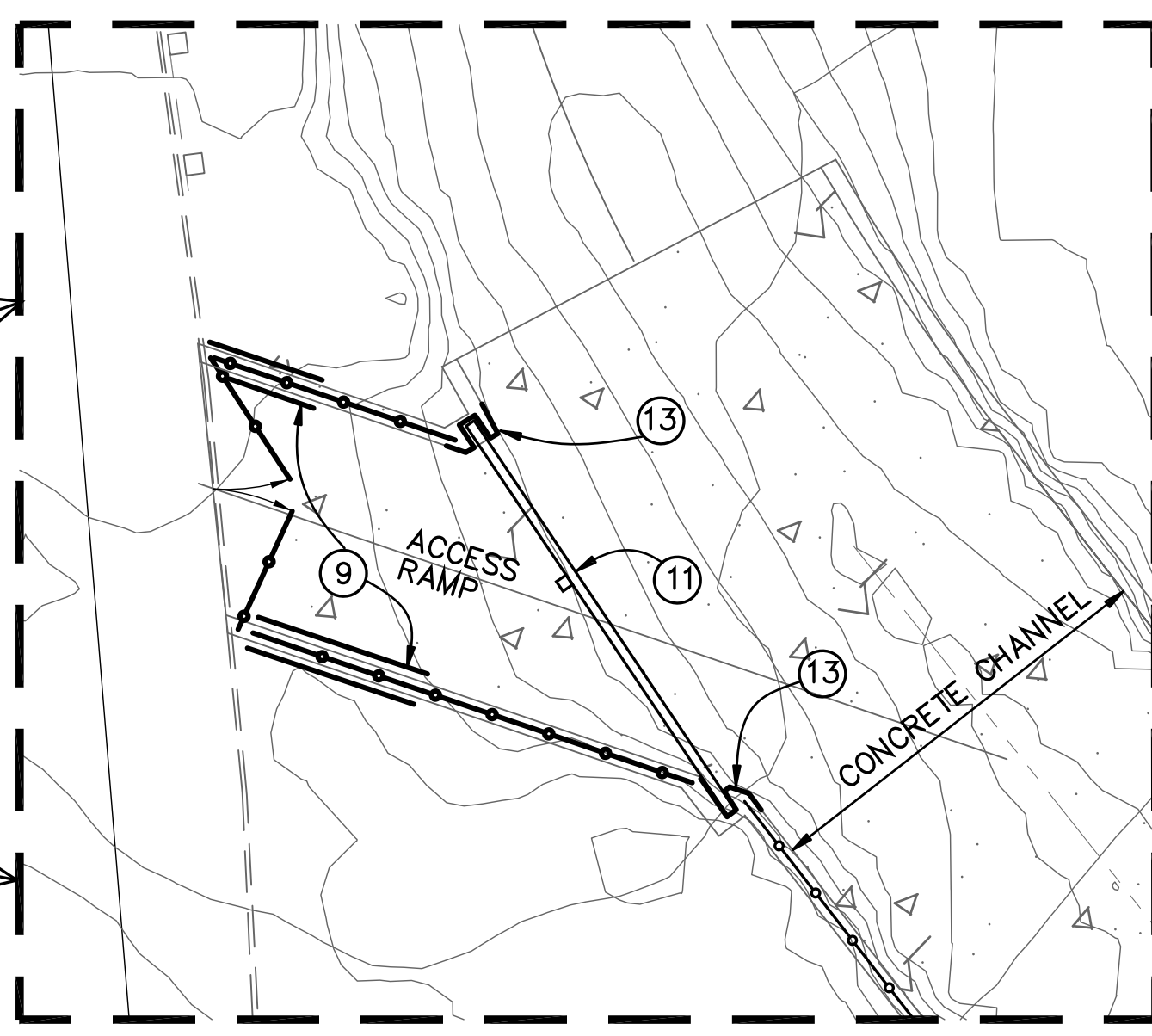
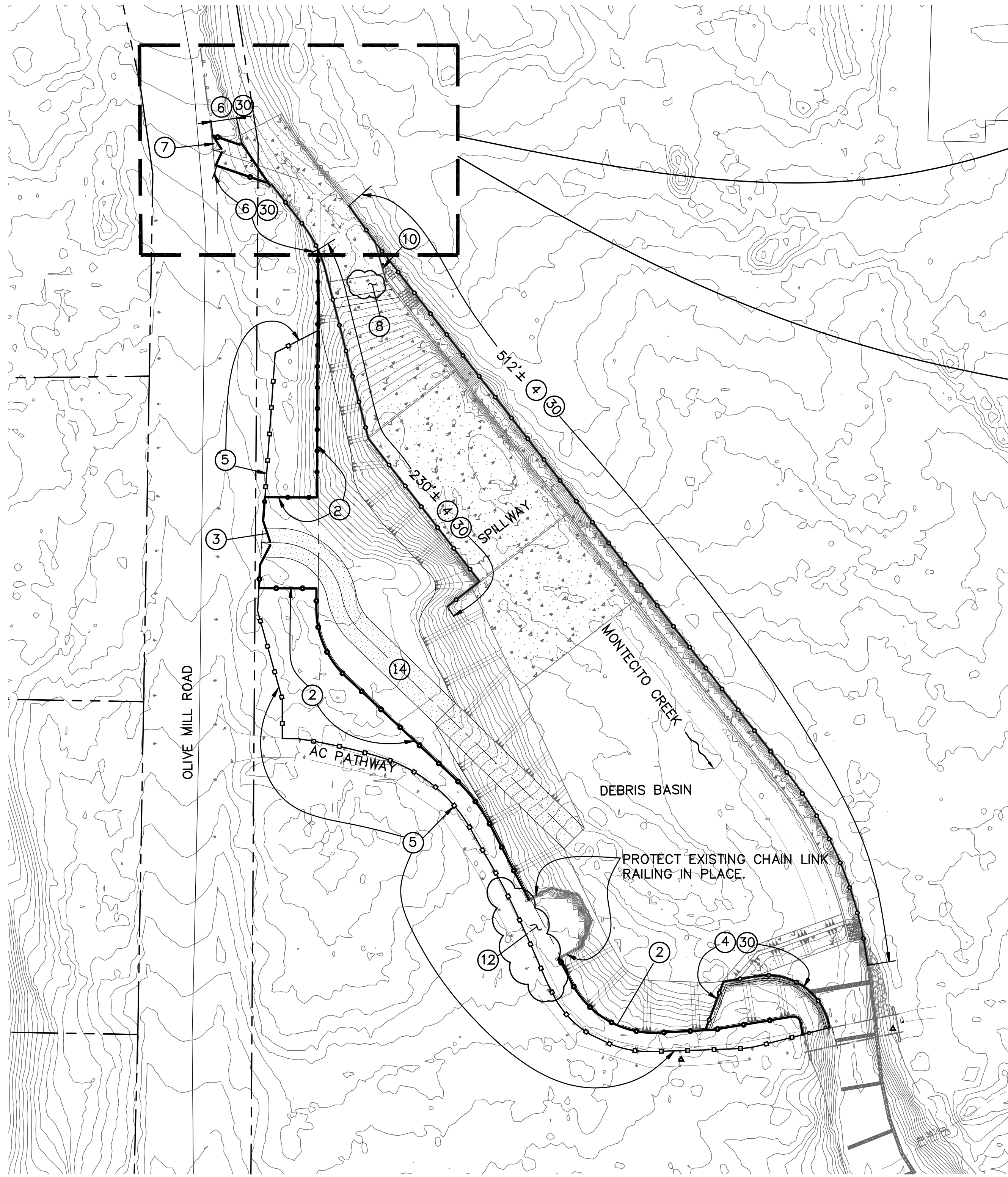


DEBRIS BASIN RESTORATION PROJECTS
THOMAS FIRE 1-9
DEBRIS FLOW INCIDENT
AREAS OF MONTECITO AND CARPINTERIA
SANTA BARBARA COUNTY, CALIFORNIA

COLD SPRINGS DEBRIS BASIN
SITE PLAN

DESIGNED BY:
MG
DRAWN BY:
OR
CHECKED BY:
JF

O-1140
SHEET 3 OF 10
Filename: Basins repair.DWG



CONSTRUCTION NOTES

- ② Reconstruct chain link fence (Type CL-6, black vinyl clad) per Caltrans Standard Plan A85.
- ③ Reconstruct 24' wide access road chain link gate (Type CL-6, black vinyl clad) per Caltrans Standard Plan A85. Relocate barrier boulder to boulder pile.
- ④ Reconstruct chain link railing (3'-6" tall, black vinyl clad, 1" mesh) along top of retaining wall per Caltrans Std Plan B11-7. Replace posts near retaining wall expansion joints per detail on sheet FCB of the Montecito Creek Debris Basin record drawing (see information handout).
- ⑤ Reconstruct wood post and rail fence per details on sheet FCB of the Montecito Creek Debris Basin record drawings (see information handout).
- ⑥ Reconstruct chain link railing (black vinyl clad, 1" mesh) along top of retaining wall per Caltrans Std. Plan B11-7. Replace posts near retaining wall expansion joints per detail on sheet FCB of the Montecito Creek Debris Basin Record Drawings (see information handout).
- ⑦ Reconstruct 16' wide access ramp chain link gate (type CL-6, black vinyl clad, 1" mesh) per Caltrans Standard Plan A85. Relocate barrier boulder to boulder pile.
- ⑧ Repair spillway crest spalled concrete per detail on sheet 9. See photo in the information handout.
- ⑨ Repair access ramp wall (both sides) per details on sheet 9. See photos in the information handout.
- ⑩ Reconstruct resting pool timber stop-logs, intermediate post, timber fillers, and appurtenant hardware per Montecito Creek Debris Basin record drawings, sheets S4 & S5 (see information handout).
- ⑪ Reconstruct access ramp timber stop logs, intermediate post, timber fillers, and appurtenant hardware per Montecito Creek Debris Basin record drawing, sheet S6 (see information handout).
- ⑫ Relocate boulder pile beyond asphalt concrete pathway, as directed by the Engineer.
- ⑬ Repair creek wall and recesses (both upstream and downstream) per the details on sheet S6 of the Montecito creek Debris Basin record drawing (See information handout). See photo in the information handout.
- ⑭ Reconstruct basin access road (RSP-4" rock, 12" thick) per details on sheet FC12 of the Montecito Creek Debris Basin record drawings (see information handout). STA 0+67.00 to STA 2+88.62.
- ⑳ Remove all damaged railing posts from concrete wall. If new railing post locations do not coincide with original post locations, damaged posts must be removed 2" below top of wall and patched with mortar. (mortar must be colored to match existing).

GENERAL NOTES:

1. The background contours were created from Lidar data taken post mud-flow event. (Towill, Inc 1/17/2018-1/22/2018). Property lines are derived from Assessor Parcel information and are shown for information only.
2. The Basin improvements overlaid on the background contours are for reference only, derived from the Montecito creek record drawings, and should not be used to obtain coordinate values, bearings or distances.
3. Remove all damaged fencing and railing materials/rubbish, including post embedded in top of retaining walls, except where noted to protect in place, from the project site.

LEGEND:

- Reconstruct wood post and rail fence
- Reconstruct 3'-6" tall chain link railing
- Reconstruct 6' tall chain link fence or chain link railing (as noted)
- ▨ Access road



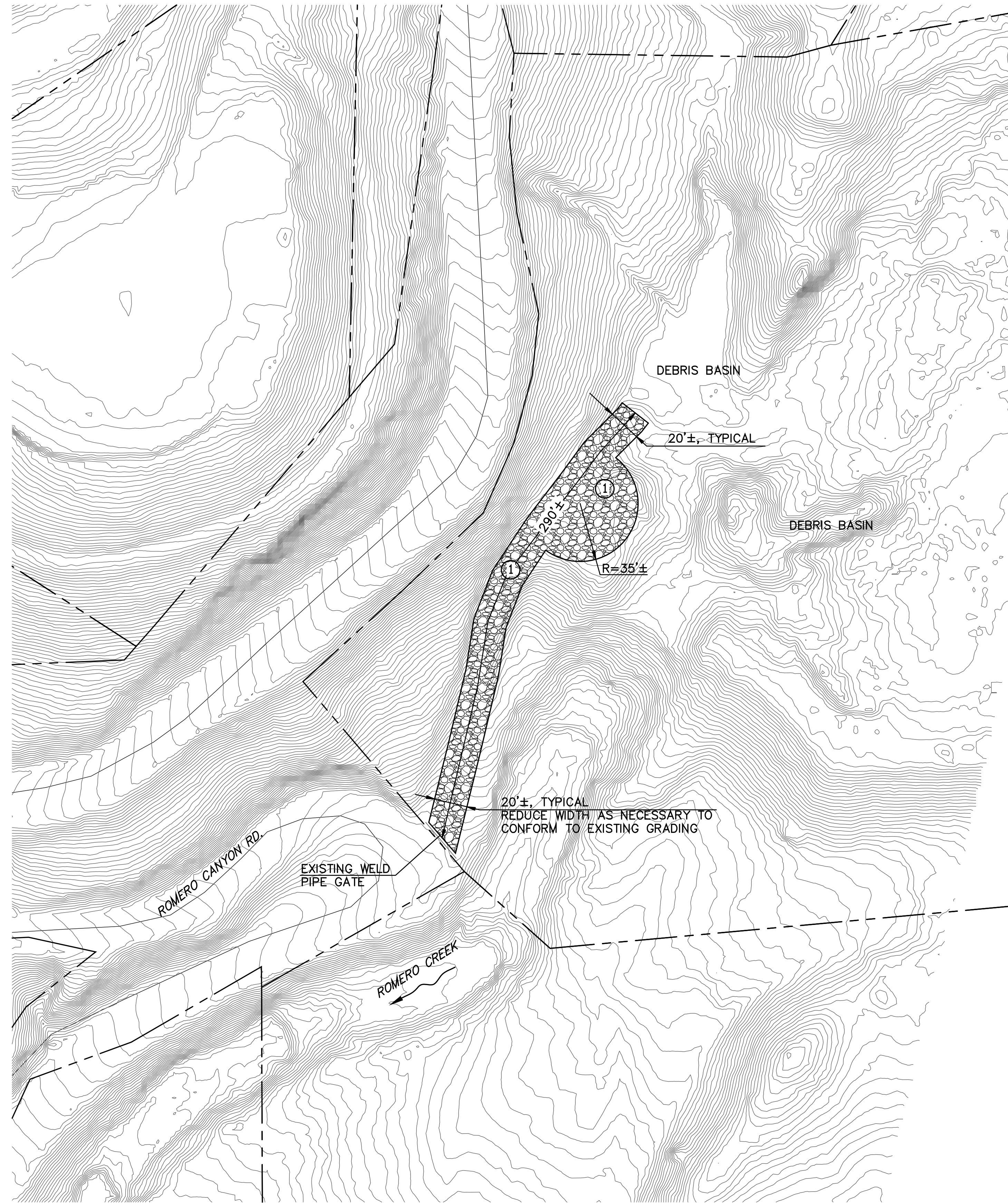
ALL UNDERGROUND UTILITIES SHOWN ARE PLOTTED BASED ON INFORMATION PROVIDED BY OTHERS, AND ARE APPROXIMATE. OVERHEAD UTILITIES ARE NOT SHOWN.

THE SANTA BARBARA COUNTY FLOOD CONTROL DISTRICT IS NOT RESPONSIBLE FOR THE ACCURACY OF THIS INFORMATION. CONTRACTOR SHALL NOTIFY UNDERGROUND SERVICE ALERT A MINIMUM OF TWO WORKING DAYS PRIOR TO COMMENCEMENT OF ANY EXCAVATION @ 1-800-422-4133.

PLAN
SCALE: 1" = 40'

UNAUTHORIZED CHANGES OR USES: THE SANTA BARBARA COUNTY FLOOD CONTROL & WATER CONSERVATION DISTRICT AND ITS EMPLOYEES WILL NOT BE RESPONSIBLE FOR, OR LIABLE FOR, UNAUTHORIZED CHANGES TO OR USES OF THESE PLANS. ALL PROPOSED CHANGES TO THE PLANS MUST BE PRESENTED IN WRITING TO THE DISTRICT AND APPROVED IN WRITING BY THE DISTRICT PRIOR TO IMPLEMENTATION OF ANY SUCH CHANGE OR USE.

<table border="1" style="width: 100%; border-collapse: collapse;"> <thead> <tr> <th colspan="4">REVISIONS</th> </tr> <tr> <th>NO.</th> <th>DESCRIPTION</th> <th>DATE</th> <th>APR</th> </tr> </thead> <tbody> <tr> <td> </td> <td> </td> <td> </td> <td> </td> </tr> <tr> <td> </td> <td> </td> <td> </td> <td> </td> </tr> <tr> <td> </td> <td> </td> <td> </td> <td> </td> </tr> </tbody> </table>	REVISIONS				NO.	DESCRIPTION	DATE	APR														DESIGNED BY: <i>Matt Drupkin</i> 8/14/2018 FLOOD CONTROL DESIGN ENGINEER	SANTA BARBARA COUNTY FLOOD CONTROL AND WATER CONSERVATION DISTRICT 130 E. VICTORIA STREET SANTA BARBARA, CA 93101 (805) 568-3440		DEBRIS BASIN RESTORATION PROJECTS THOMAS FIRE 1-9 DEBRIS FLOW INCIDENT AREAS OF MONTECITO AND CARPINTERIA SANTA BARBARA COUNTY, CALIFORNIA	<div style="text-align: center;"> MONTECITO DEBRIS BASIN SITE PLAN </div>	DESIGNED BY: MG DRAWN BY: OR CHECKED BY: JF	<div style="text-align: center;"> <h1>O-1140</h1> <p>SHEET 4 OF 10</p> <p>Filename: Basins repair.DWG</p> </div>
REVISIONS																												
NO.	DESCRIPTION	DATE	APR																									



CONSTRUCTION NOTES

- ① Reconstruct gravel access road per detail on sheet 9. Coordinate lines and grades with the Engineer for approval.

GENERAL NOTES

- 1. The background contours were created from Lidar data taken post mud-flow event. (Towill, Inc 1/17/2018-1/22/2018). Property lines are derived from Assessor Parcel information and are shown for information only.

ALL UNDERGROUND UTILITIES SHOWN ARE PLOTTED BASED ON INFORMATION PROVIDED BY OTHERS, AND ARE APPROXIMATE. OVERHEAD UTILITIES ARE NOT SHOWN.

THE SANTA BARBARA COUNTY FLOOD CONTROL DISTRICT IS NOT RESPONSIBLE FOR THE ACCURACY OF THIS INFORMATION. CONTRACTOR SHALL NOTIFY UNDERGROUND SERVICE ALERT A MINIMUM OF TWO WORKING DAYS PRIOR TO COMMENCEMENT OF ANY EXCAVATION @ 1-800-422-4133.

UNAUTHORIZED CHANGES OR USES:
THE SANTA BARBARA COUNTY FLOOD CONTROL & WATER CONSERVATION DISTRICT AND ITS EMPLOYEES WILL NOT BE RESPONSIBLE FOR, OR LIABLE FOR, UNAUTHORIZED CHANGES TO OR USES OF THESE PLANS. ALL PROPOSED CHANGES TO THE PLANS MUST BE PRESENTED IN WRITING TO THE DISTRICT AND APPROVED IN WRITING BY THE DISTRICT PRIOR TO IMPLEMENTATION OF ANY SUCH CHANGE OR USE.

PLAN
SCALE: 1" = 40'

GRAPHIC SCALE

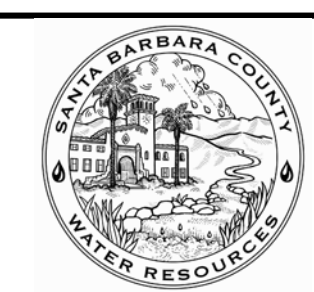


REVISIONS			
NO.	DESCRIPTION	DATE	APR



DESIGNED BY: *Matt Luffman* 8/14/2018
FLOOD CONTROL DESIGN ENGINEER DATE

SANTA BARBARA COUNTY
FLOOD CONTROL AND
WATER CONSERVATION DISTRICT
130 E. VICTORIA STREET
SANTA BARBARA, CA 93101
(805) 568-3440

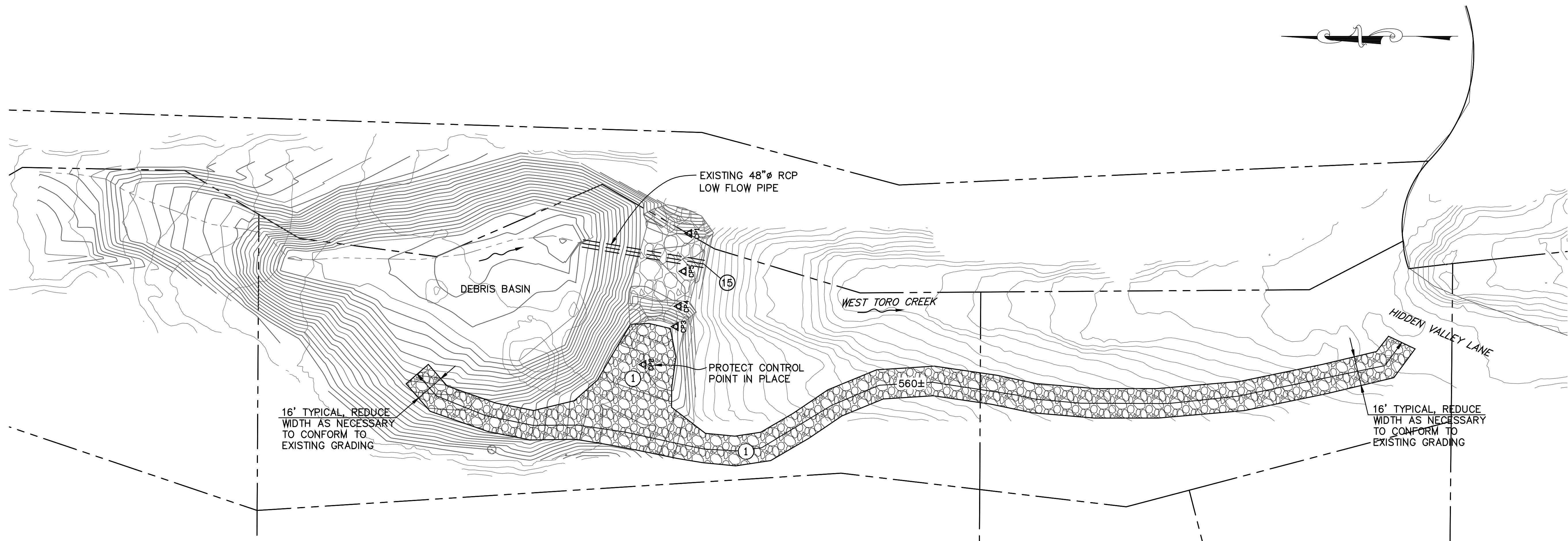


DEBRIS BASIN RESTORATION PROJECTS
THOMAS FIRE 1-9
DEBRIS FLOW INCIDENT
AREAS OF MONTECITO AND CARPINTERIA
SANTA BARBARA COUNTY, CALIFORNIA

ROMERO DEBRIS BASIN
SITE PLAN

DESIGNED BY:
MG
DRAWN BY:
OR
CHECKED BY:
JF

O-1140
SHEET 5 OF 10
Filename: Basins repair.DWG



PLAN
SCALE: 1" = 30'

CONSTRUCTION NOTES

- ① Reconstruct gravel access road per detail on sheet 9. Coordinate lines and grades with the Engineer for approval.
- ⑮ Repair concrete pipe outlet. Trim exposed wire mesh to transverse wire closest to damaged concrete. Apply concrete adhesive to damaged concrete. Repair damaged concrete with mortar, 1.5 inches cover, min., over wire mesh.

GENERAL NOTES

- 1. The background contours were created from Lidar data taken post mud-flow event. (Towill, Inc 1/17/2018-1/22/2018). Property lines are derived from Assessor Parcel information and are shown for information only.
- 2. The Basin Grading contours are for reference only, and should not be used to obtain coordinate values, bearings or distances.

GRAPHIC SCALE

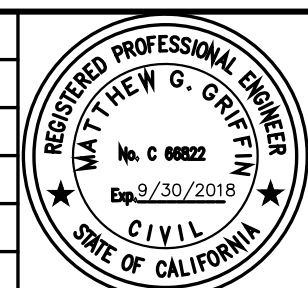


ALL UNDERGROUND UTILITIES SHOWN ARE PLOTTED BASED ON INFORMATION PROVIDED BY OTHERS, AND ARE APPROXIMATE. OVERHEAD UTILITIES ARE NOT SHOWN.

THE SANTA BARBARA COUNTY FLOOD CONTROL DISTRICT IS NOT RESPONSIBLE FOR THE ACCURACY OF THIS INFORMATION. CONTRACTOR SHALL NOTIFY UNDERGROUND SERVICE ALERT A MINIMUM OF TWO WORKING DAYS PRIOR TO COMMENCEMENT OF ANY EXCAVATION @ 1-800-422-4133.

UNAUTHORIZED CHANGES OR USES:
THE SANTA BARBARA COUNTY FLOOD CONTROL & WATER CONSERVATION DISTRICT AND ITS EMPLOYEES WILL NOT BE RESPONSIBLE FOR, OR LIABLE FOR, UNAUTHORIZED CHANGES TO OR USES OF THESE PLANS. ALL PROPOSED CHANGES TO THE PLANS MUST BE PRESENTED IN WRITING TO THE DISTRICT AND APPROVED IN WRITING BY THE DISTRICT PRIOR TO IMPLEMENTATION OF ANY SUCH CHANGE OR USE.

REVISIONS			
NO.	DESCRIPTION	DATE	APR



DESIGNED BY: *Matthew Griffin* 8/14/2018
FLOOD CONTROL DESIGN ENGINEER DATE

SANTA BARBARA COUNTY
FLOOD CONTROL AND
WATER CONSERVATION DISTRICT
130 E. VICTORIA STREET
SANTA BARBARA, CA 93101
(805) 568-3440



DEBRIS BASIN RESTORATION PROJECTS
THOMAS FIRE 1-9
DEBRIS FLOW INCIDENT
AREAS OF MONTECITO AND CARPINTERIA
SANTA BARBARA COUNTY, CALIFORNIA

TORO UPPER WEST
DEBRIS BASIN
SITE PLAN

DESIGNED BY: MG
DRAWN BY: OR
CHECKED BY: JF

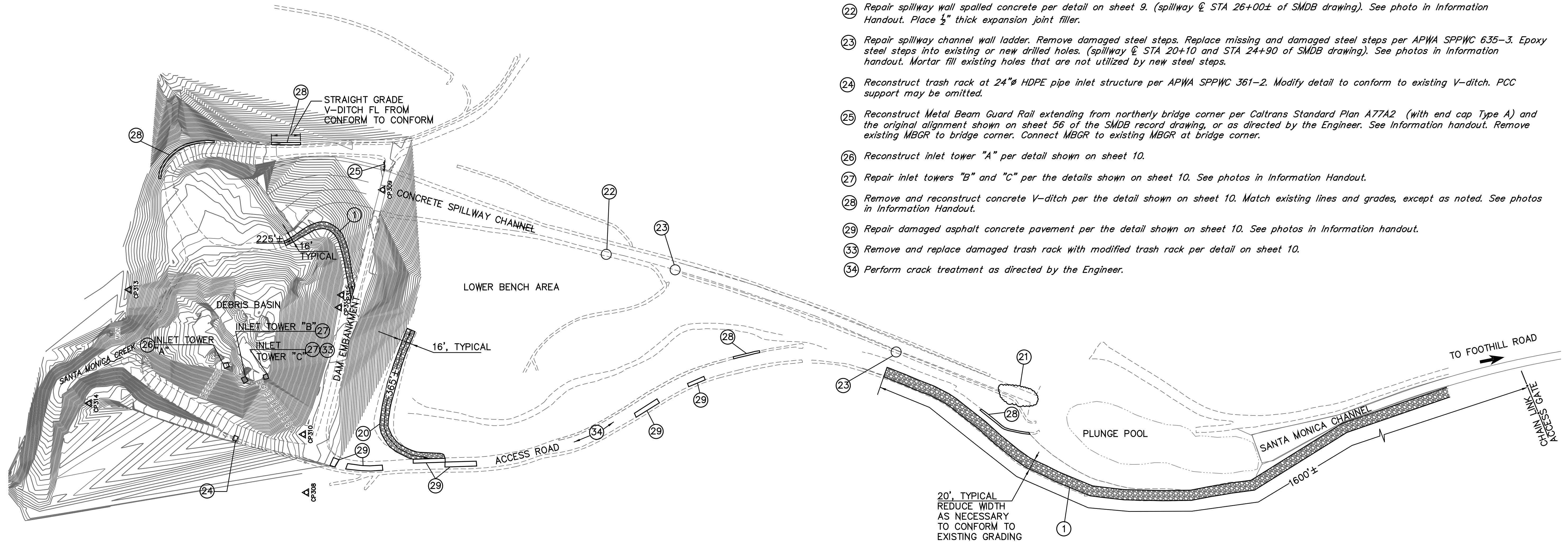
O-1140
SHEET 6 OF 10
Filename: Basins repair.DWG

GENERAL NOTES

1. The topography and existing basin facilities are derived from the Thomas Fire 1-9 Debris flow incident: Santa Monica Debris Basin Restoration Project - Phase 1, Project plans (2018, District drawing No.0-1139).
2. A copy of the Santa Monica Creek Debris Basin record drawings, District Drawing No. 0-870 (SMDB record drawing) are included in the Information Handout.

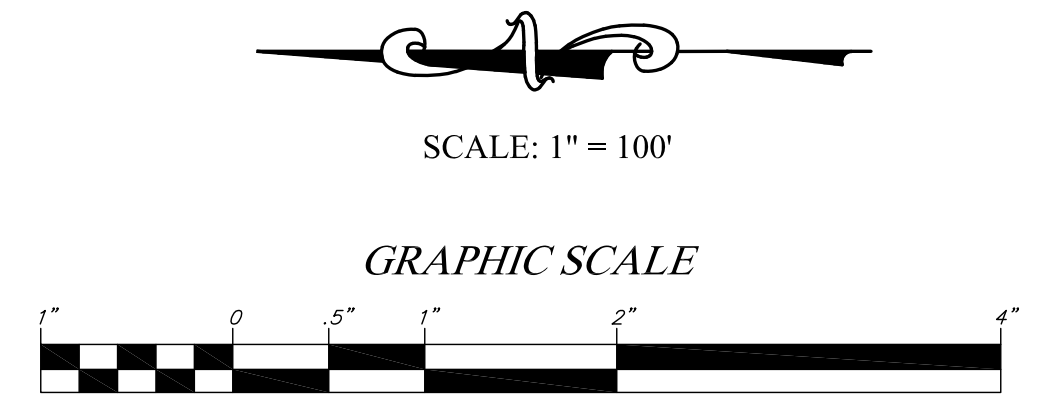
GENERAL NOTES

1. Reconstruct gravel access road per detail on sheet 9. Coordinate lines and grades with the Engineer for approval.
20. Reconstruct gravel access road per detail on sheet 9, except that FG must be graded to drain to the center of the access road, as shown on the "Santa Monica Debris basin access road" record drawing (see Information Handout). Coordinate lines and grades with the Engineer in the field for approval.
21. Remove sediment and debris from spillway channel tail section. See photo in Information Handout.
22. Repair spillway wall spalled concrete per detail on sheet 9. (spillway @ STA 26+00± of SMDB drawing). See photo in Information Handout. Place 1/2" thick expansion joint filler.
23. Repair spillway channel wall ladder. Remove damaged steel steps. Replace missing and damaged steel steps per APWA SPPWC 635-3. Epoxy steel steps into existing or new drilled holes. (spillway @ STA 20+10 and STA 24+90 of SMDB drawing). See photos in Information handout. Mortar fill existing holes that are not utilized by new steel steps.
24. Reconstruct trash rack at 24"Ø HDPE pipe inlet structure per APWA SPPWC 361-2. Modify detail to conform to existing V-ditch. PCC support may be omitted.
25. Reconstruct Metal Beam Guard Rail extending from northerly bridge corner per Caltrans Standard Plan A77A2 (with end cap Type A) and the original alignment shown on sheet 56 of the SMDB record drawing, or as directed by the Engineer. See Information handout. Remove existing MBGR to bridge corner. Connect MBGR to existing MBGR at bridge corner.
26. Reconstruct inlet tower "A" per detail shown on sheet 10.
27. Repair inlet towers "B" and "C" per the details shown on sheet 10. See photos in Information Handout.
28. Remove and reconstruct concrete V-ditch per the detail shown on sheet 10. Match existing lines and grades, except as noted. See photos in Information Handout.
29. Repair damaged asphalt concrete pavement per the detail shown on sheet 10. See photos in Information handout.
33. Remove and replace damaged trash rack with modified trash rack per detail on sheet 10.
34. Perform crack treatment as directed by the Engineer.

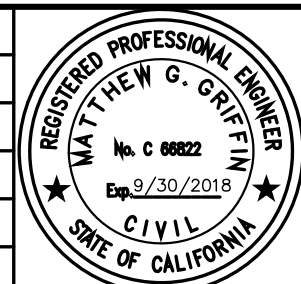


ALL UNDERGROUND UTILITIES SHOWN ARE PLOTTED BASED ON INFORMATION PROVIDED BY OTHERS, AND ARE APPROXIMATE. OVERHEAD UTILITIES ARE NOT SHOWN.
 THE SANTA BARBARA COUNTY FLOOD CONTROL DISTRICT IS NOT RESPONSIBLE FOR THE ACCURACY OF THIS INFORMATION. CONTRACTOR SHALL NOTIFY UNDERGROUND SERVICE ALERT A MINIMUM OF TWO WORKING DAYS PRIOR TO COMMENCEMENT OF ANY EXCAVATION @ 1-800-422-4133.

UNAUTHORIZED CHANGES OR USES:
 THE SANTA BARBARA COUNTY FLOOD CONTROL & WATER CONSERVATION DISTRICT AND ITS EMPLOYEES WILL NOT BE RESPONSIBLE FOR, OR LIABLE FOR, UNAUTHORIZED CHANGES TO OR USES OF THESE PLANS. ALL PROPOSED CHANGES TO THE PLANS MUST BE PRESENTED IN WRITING TO THE DISTRICT AND APPROVED IN WRITING BY THE DISTRICT PRIOR TO IMPLEMENTATION OF ANY SUCH CHANGE OR USE.



REVISIONS				
NO.	DESCRIPTION	DATE	APR	



DESIGNED BY: *Matthew Giffen* 8/14/2018
 FLOOD CONTROL DESIGN ENGINEER DATE

SANTA BARBARA COUNTY
 FLOOD CONTROL AND
 WATER CONSERVATION DISTRICT
 130 E. VICTORIA STREET
 SANTA BARBARA, CA 93101
 (805) 568-3440



DEBRIS BASIN RESTORATION PROJECTS
 THOMAS FIRE 1-9
 DEBRIS FLOW INCIDENT
 AREAS OF MONTECITO AND CARPINTERIA
 SANTA BARBARA COUNTY, CALIFORNIA

**SANTA MONICA DEBRIS BASIN
 SITE PLAN**

DESIGNED BY:
 MG
 DRAWN BY:
 JM/OR
 CHECKED BY:
 MG

O-1140

SHEET 7 OF 10

Filename: SantaMonicaTowers-8-2-2018.DWG

CONSTRUCTION NOTES

- ① Reconstruct gravel access road per detail on sheet 9. Coordinate lines and grades with the Engineer for approval.
- ⑬ Reconstruct chain link fence (Type CL-5) per Caltrans Standard Plan A85.
- ⑭ Reconstruct 20' wide chain link gate (Type CL-5) per Caltrans Standard Plan A85.
- ⑮ Reconstruct barbed wire fence per Caltrans Standard Plan A86 (Type BW, Metal posts, 4 strand).
- ⑯ Reconstruct cable railing on top of retaining walls per Caltrans Standard Plan B11-47.
- ⑳ Remove all damaged rating posts from concrete wall. If new rating post locations do not coincide with original post locations, damaged posts must be removed 2" below top of wall and patched with mortar.
- ㉑ Relocate boulder pile to on site stock pile area, as directed by the Engineer.
- ㉒ Remove log pile.

LEGEND:

- x — x — Reconstruct Barbed Wire fence
- ○ ○ Reconstruct 5' tall chain link fence and gate
- □ □ Reconstruct cable railing

GENERAL NOTES:

- 1. The topography and existing basin facilities are derived from the Gobernador Canyon Basin Modification— record drawings (2008, District drawing No-0-1043).
- 2. Remove all damaged fencing and railing materials and rubbish, including posts embedded in top of retaining walls, from the project site.

ALL UNDERGROUND UTILITIES SHOWN ARE PLOTTED BASED ON INFORMATION PROVIDED BY OTHERS, AND ARE APPROXIMATE. OVERHEAD UTILITIES ARE NOT SHOWN.
 THE SANTA BARBARA COUNTY FLOOD CONTROL DISTRICT IS NOT RESPONSIBLE FOR THE ACCURACY OF THIS INFORMATION. CONTRACTOR SHALL NOTIFY UNDERGROUND SERVICE ALERT A MINIMUM OF TWO WORKING DAYS PRIOR TO COMMENCEMENT OF ANY EXCAVATION @ 1-800-422-4133.

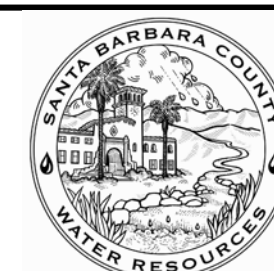
UNAUTHORIZED CHANGES OR USES:
 THE SANTA BARBARA COUNTY FLOOD CONTROL & WATER CONSERVATION DISTRICT AND ITS EMPLOYEES WILL NOT BE RESPONSIBLE FOR, OR LIABLE FOR, UNAUTHORIZED CHANGES TO OR USES OF THESE PLANS. ALL PROPOSED CHANGES TO THE PLANS MUST BE PRESENTED IN WRITING TO THE DISTRICT AND APPROVED IN WRITING BY THE DISTRICT PRIOR TO IMPLEMENTATION OF ANY SUCH CHANGE OR USE.

REVISIONS			
NO.	DESCRIPTION	DATE	APR



DESIGNED BY: *Matt Griffin* 8/14/2018
 FLOOD CONTROL DESIGN ENGINEER DATE

SANTA BARBARA COUNTY
 FLOOD CONTROL AND
 WATER CONSERVATION DISTRICT
 130 E. VICTORIA STREET
 SANTA BARBARA, CA 93101
 (805) 568-3440



DEBRIS BASIN RESTORATION PROJECTS
 THOMAS FIRE 1-9
 DEBRIS FLOW INCIDENT
 AREAS OF MONTECITO AND CARPINTERIA
 SANTA BARBARA COUNTY, CALIFORNIA

GOVERNADOR DEBRIS BASIN
 SITE PLAN

DESIGNED BY:
 MG
 DRAWN BY:
 OR
 CHECKED BY:
 JF

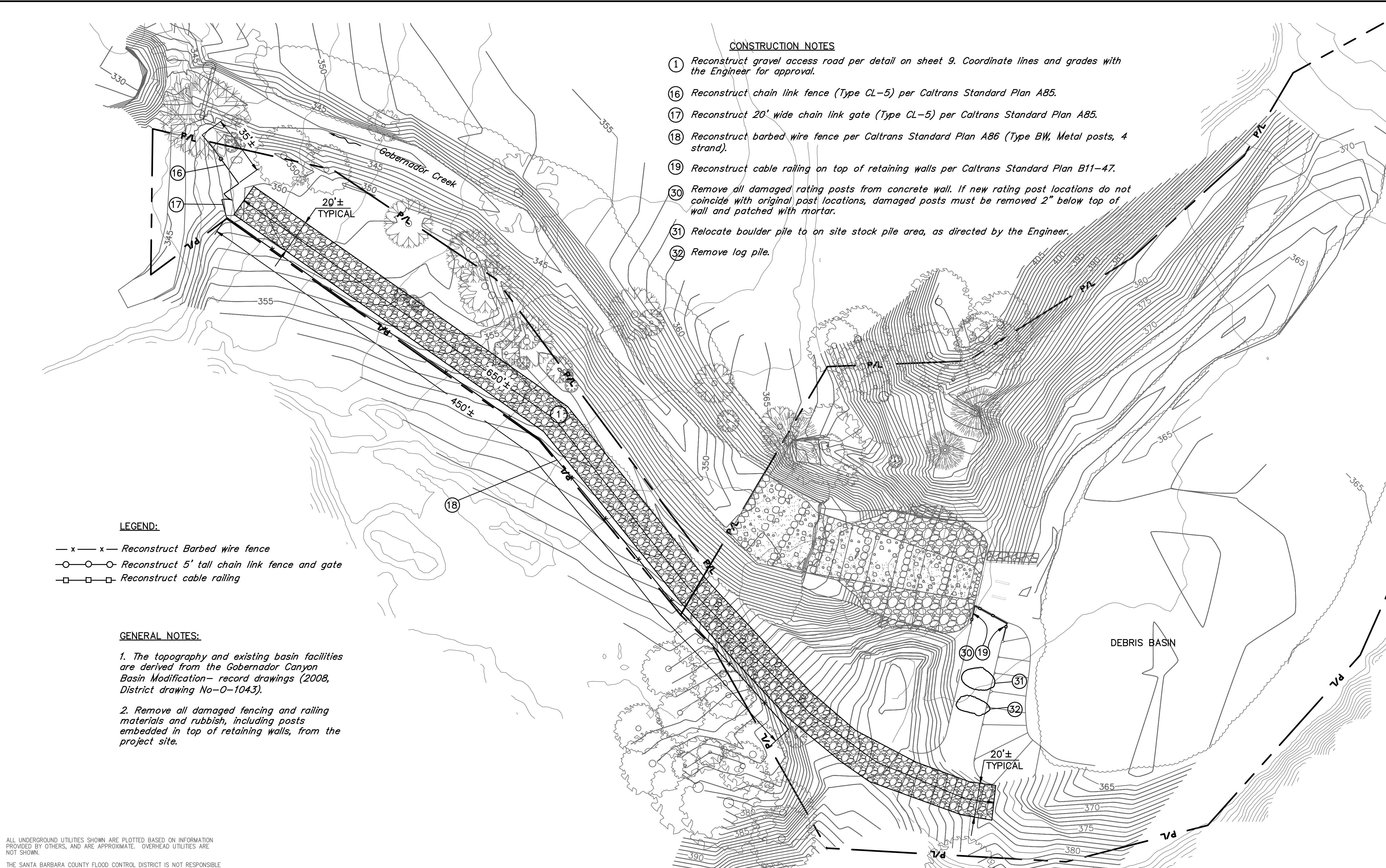
O-1140

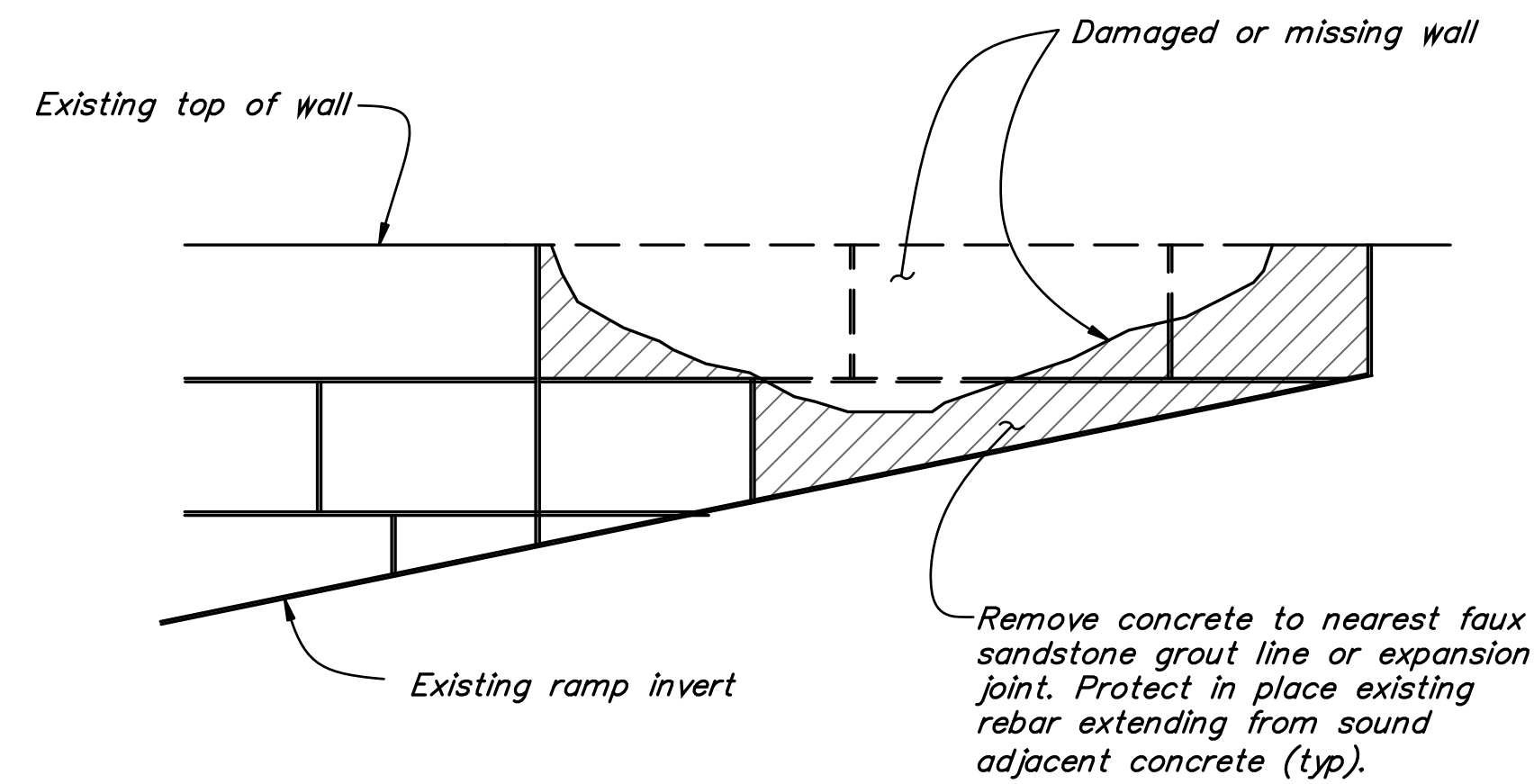
SHEET 8 OF 10

Filename: Basins repair.DWG

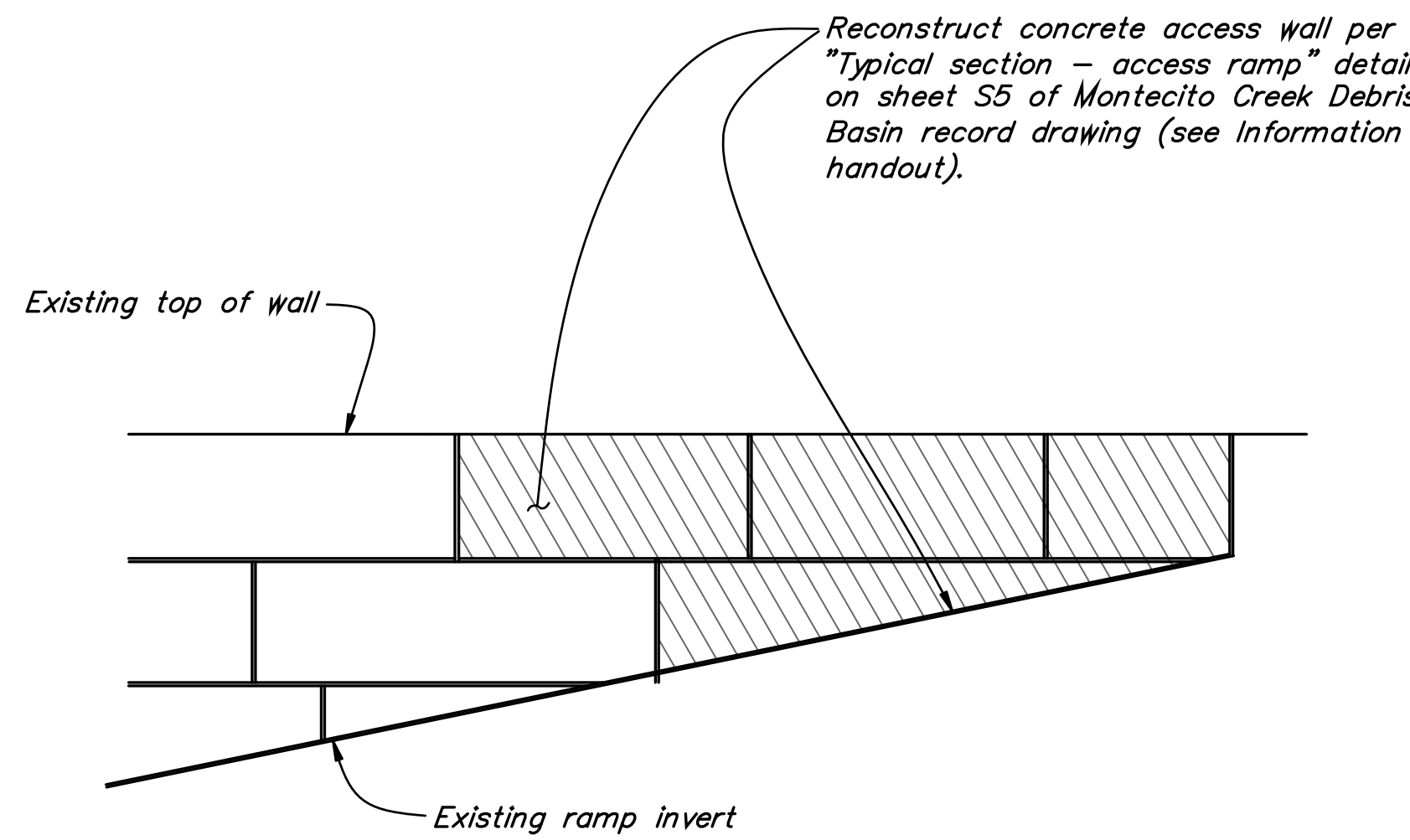
PLAN
 SCALE: 1" = 30'

GRAPHIC SCALE





REPAIR ACCESS RAMP WALL DETAIL - REMOVAL (TYPICAL)
N.T.S.



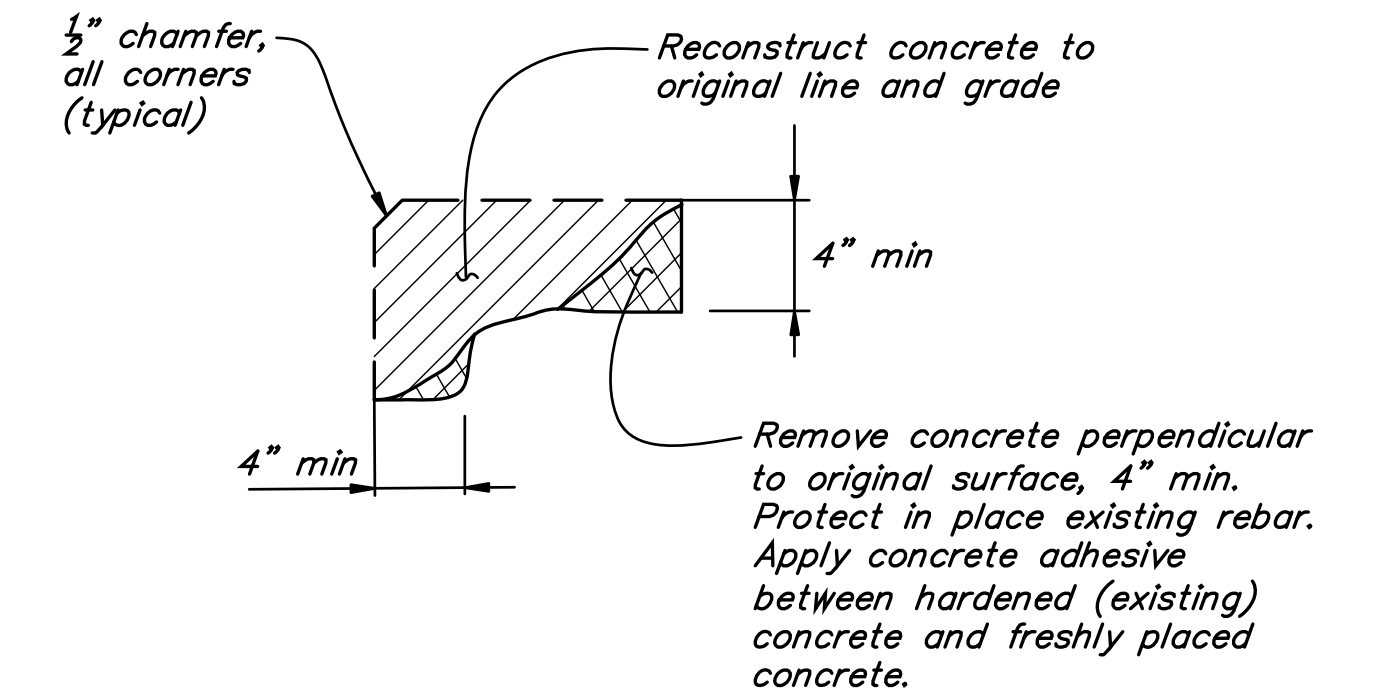
REPAIR ACCESS RAMP WALL DETAIL - RECONSTRUCT (TYPICAL)
N.T.S.

REPAIR ACCESS RAMP WALL NOTES:

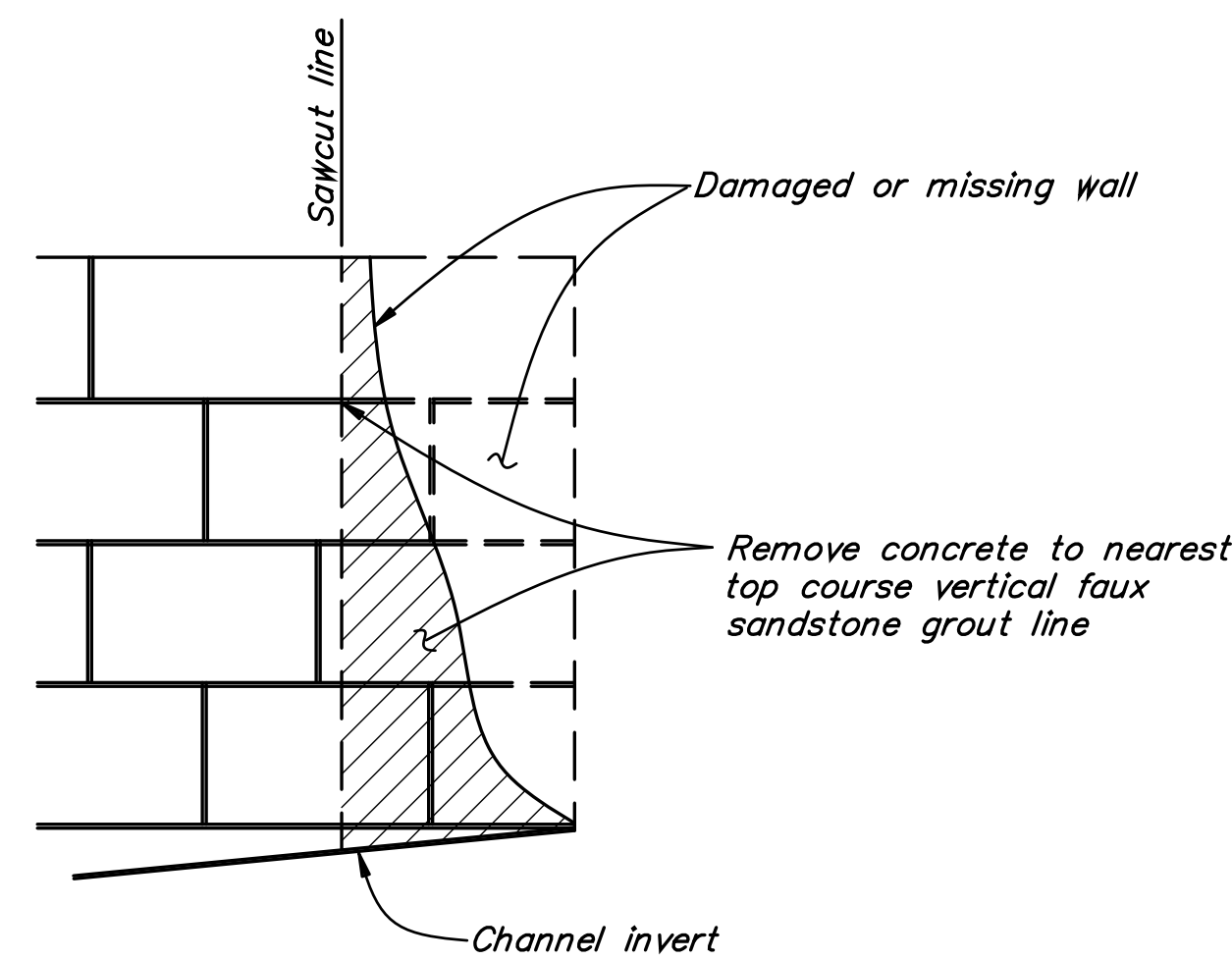
1. Apply Architectural Treatment Custom Rock International pattern 1104 to exposed access ramp wall face. Align faux grout lines to match existing.
2. All concrete must be integrally colored concrete, Davis-Color "Mesa Buff", or approved equal.
3. Drill and epoxy bond rebar (6" embedded min) into adjacent existing wall where existing rebar is missing or damaged, 12" overlap min.
4. Apply concrete adhesive between hardened (existing) concrete and freshly placed concrete.

GENERAL NOTES:

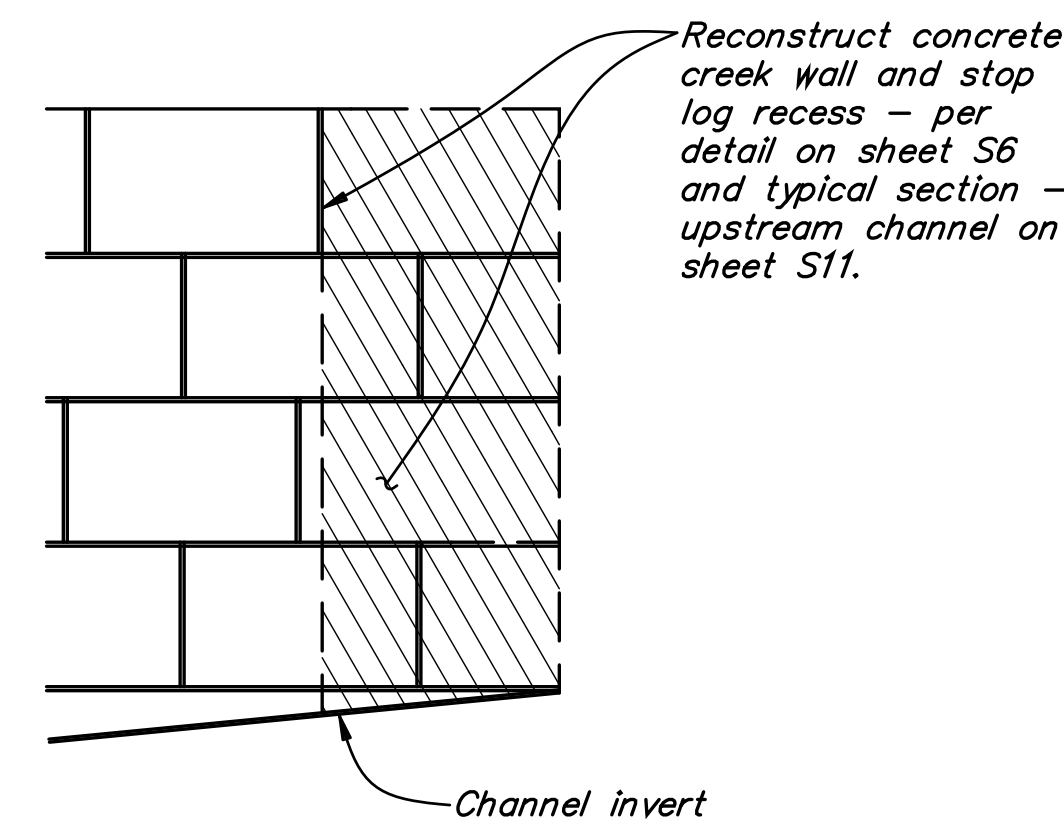
1. All concrete, except concrete V-ditches, must have a 28-day compressive strength of 4000 psi, minimum.
2. Reinforcing bars must be deformed bars complying with ASTM A706.
3. Construct 1/2" chamfers of all new concrete corners not armored.



REPAIR SPALLED CONCRETE (TYPICAL)
N.T.S.



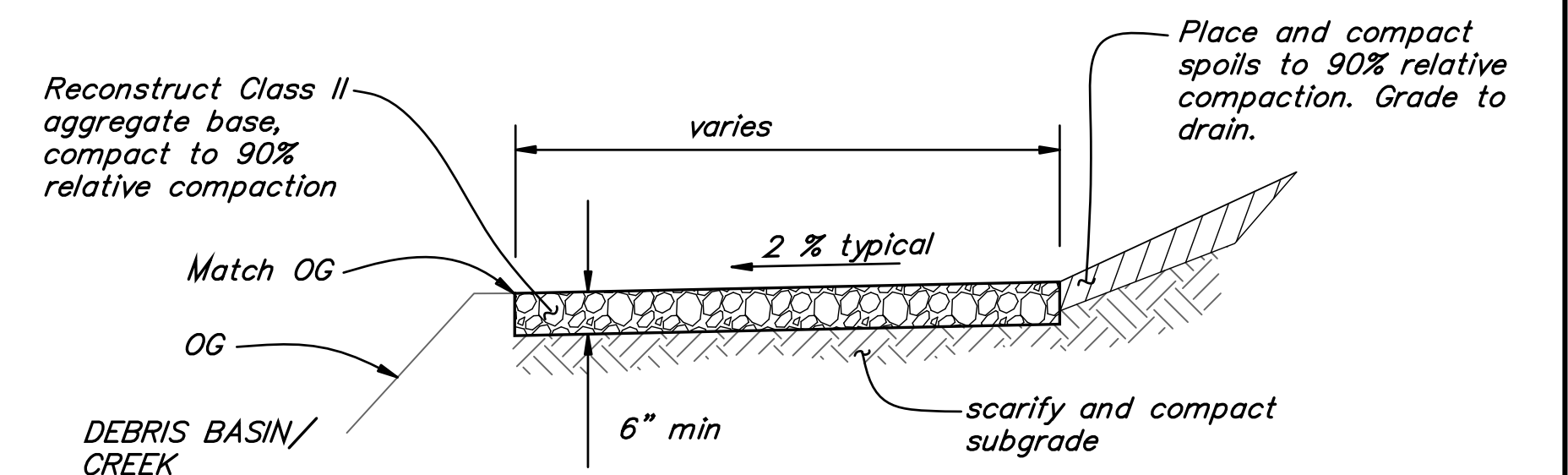
REPAIR CREEK WALL AND RECESS DETAIL - REMOVAL (TYPICAL)
N.T.S.



REPAIR CREEK WALL AND RECESS DETAIL - RECONSTRUCT (TYPICAL)
N.T.S.

REPAIR CREEK WALL AND RECESS NOTES:

1. Apply Architectural Treatment—Custom Rock International pattern 1104 to exposed access ramp wall face. Align faux grout lines to match existing.
2. All concrete must be integrally colored concrete, Davis-Color "Mesa Buff", or approved equal.
3. Drill and epoxy bond rebar (6" embedded min) into adjacent existing wall where existing rebar is missing or damaged, 12" overlap min.
4. Apply concrete adhesive between hardened (existing) concrete and freshly placed concrete.
5. Replace downstream recess damaged PL 1/2 x 6 and damaged or missing eye-bolts (upstream and downstream, matching existing, 4 total); alternatively, contractor may bend damaged PL 1/2 x 6 and eye-bolts back to their original shape. If alternative is selected, Contractor must submit a shop drawing of proposed means & methods.



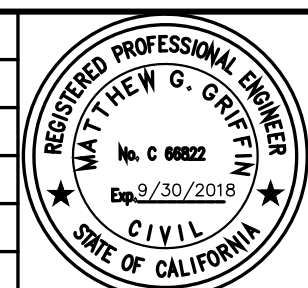
RECONSTRUCT GRAVEL ACCESS ROAD DETAIL (TYPICAL)
N.T.S.

ALL UNDERGROUND UTILITIES SHOWN ARE PLOTTED BASED ON INFORMATION PROVIDED BY OTHERS, AND ARE APPROXIMATE. OVERHEAD UTILITIES ARE NOT SHOWN.

THE SANTA BARBARA COUNTY FLOOD CONTROL DISTRICT IS NOT RESPONSIBLE FOR THE ACCURACY OF THIS INFORMATION. CONTRACTOR SHALL NOTIFY UNDERGROUND SERVICE ALERT A MINIMUM OF TWO WORKING DAYS PRIOR TO COMMENCEMENT OF ANY EXCAVATION @ 1-800-422-4133.

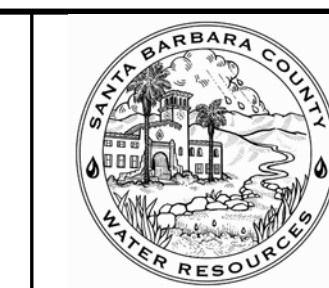
UNAUTHORIZED CHANGES OR USES:
THE SANTA BARBARA COUNTY FLOOD CONTROL & WATER CONSERVATION DISTRICT AND ITS EMPLOYEES WILL NOT BE RESPONSIBLE FOR, OR LIABLE FOR, UNAUTHORIZED CHANGES TO OR USES OF THESE PLANS. ALL PROPOSED CHANGES TO THE PLANS MUST BE PRESENTED IN WRITING TO THE DISTRICT AND APPROVED IN WRITING BY THE DISTRICT PRIOR TO IMPLEMENTATION OF ANY SUCH CHANGE OR USE.

REVISIONS			
NO.	DESCRIPTION	DATE	APR



DESIGNED BY: <i>Matt Druphan</i> 8/14/2018	DATE
FLOOD CONTROL DESIGN ENGINEER	

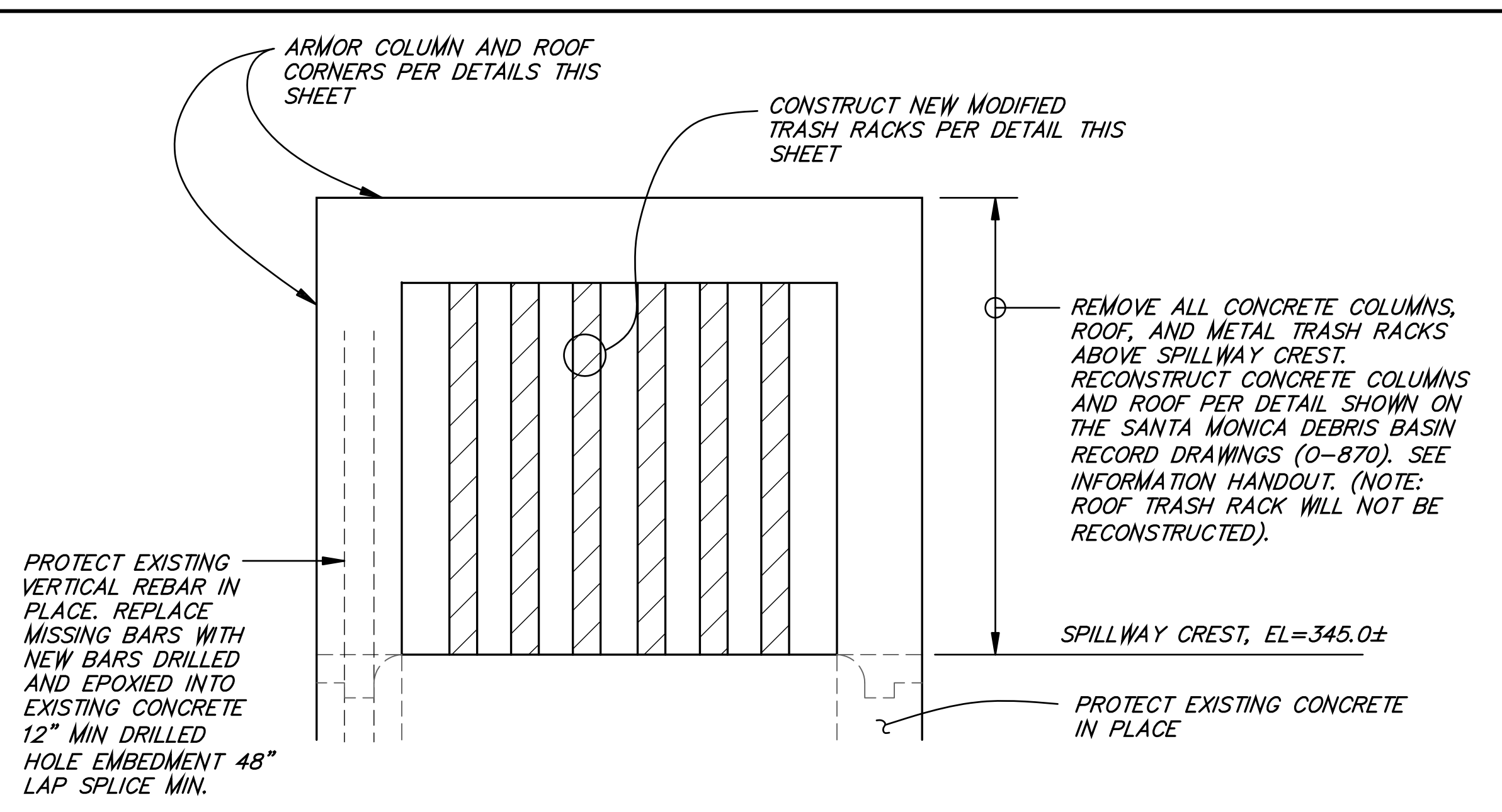
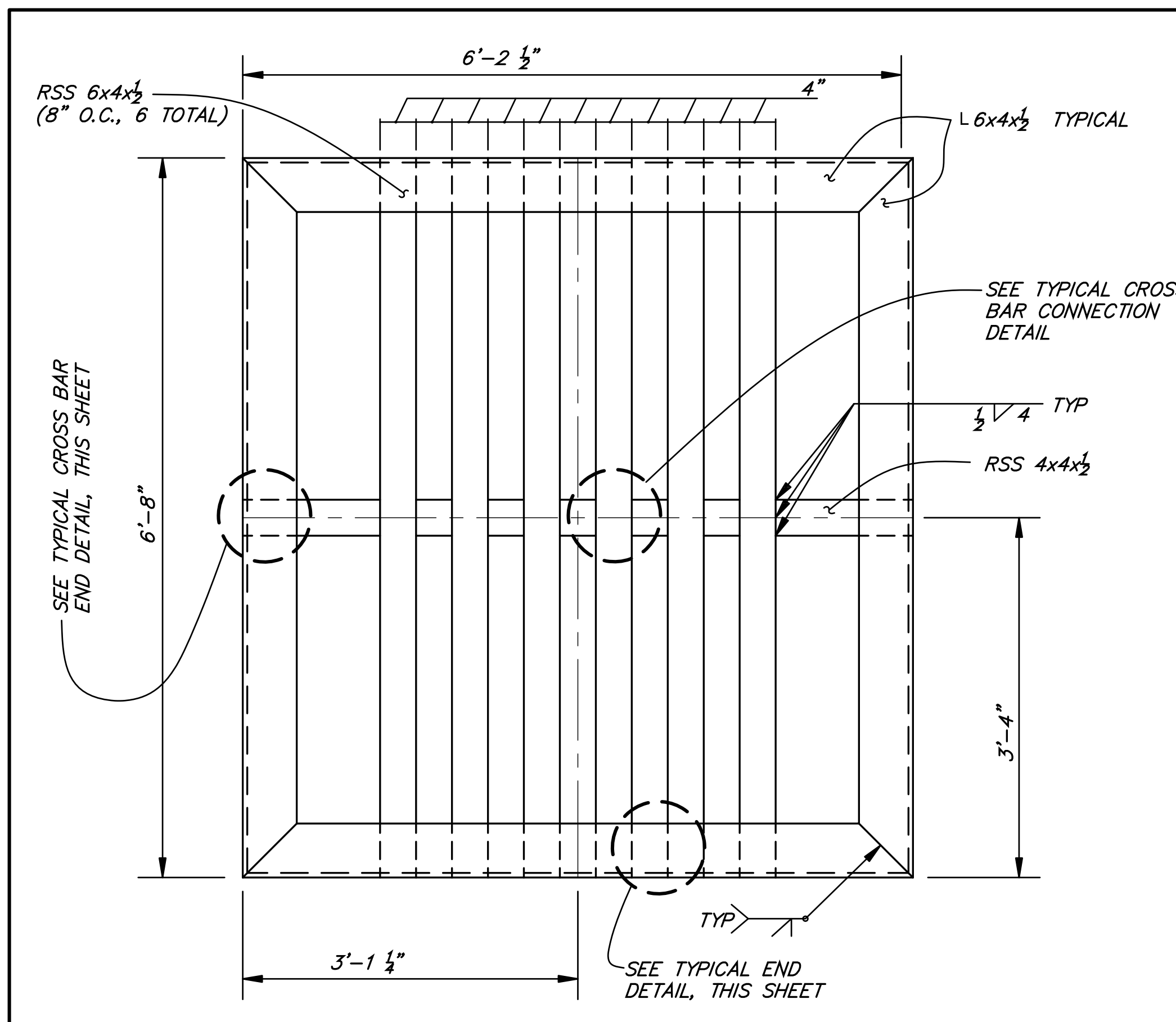
SANTA BARBARA COUNTY
FLOOD CONTROL AND
WATER CONSERVATION DISTRICT
130 E. VICTORIA STREET
SANTA BARBARA, CA 93101
(805) 568-3440



DEBRIS BASIN RESTORATION PROJECTS
THOMAS FIRE 1-9
DEBRIS FLOW INCIDENT
AREAS OF MONTECITO AND CARPINTERIA
SANTA BARBARA COUNTY, CALIFORNIA

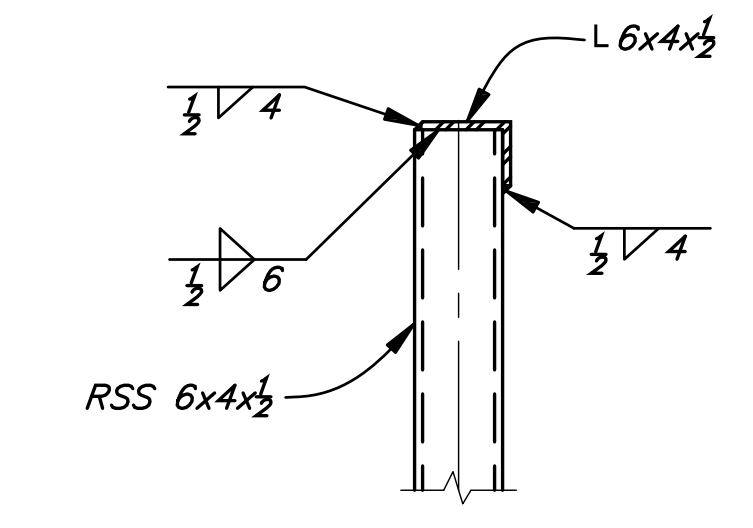
DESIGNED BY: MG	DETAILS
DRAWN BY: OR	
CHECKED BY: JF	

O-1140
SHEET 9 OF 10
Filename: Basins repair.DWG

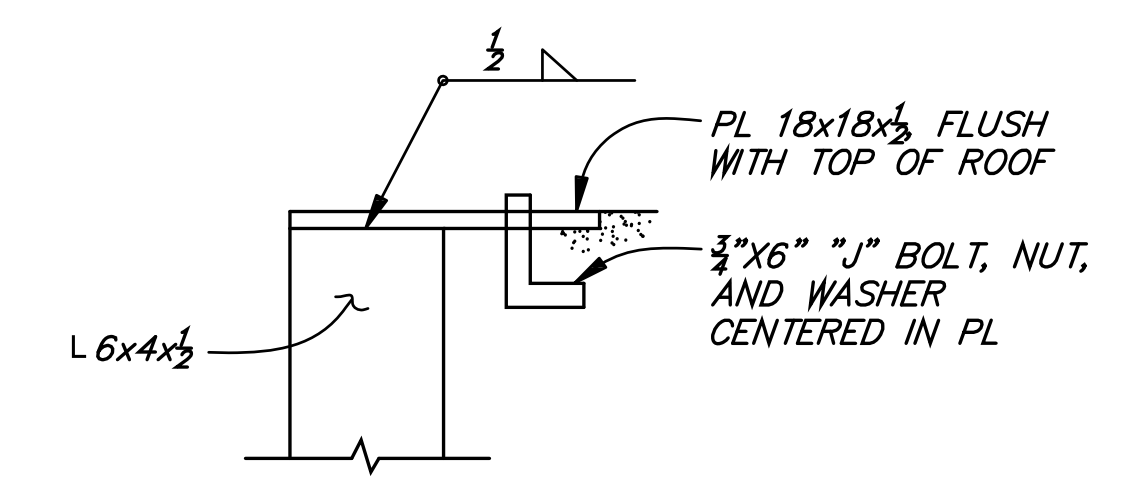


- GENERAL NOTES:**
- All concrete, except concrete V-ditch, must have a 28-day compressive strength of 4000 psi, minimum.
 - Reinforcing bars must be deformed bars complying with ASTM A706.
 - Construct $\frac{1}{2}$ " chamfers of all new concrete corners not armored.

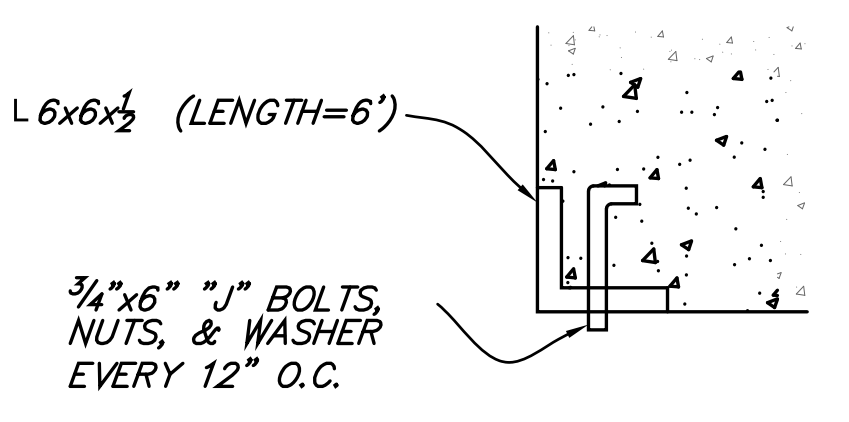
TYPICAL CROSS BAR END DETAIL
N.T.S.



TYPICAL END DETAIL
N.T.S.

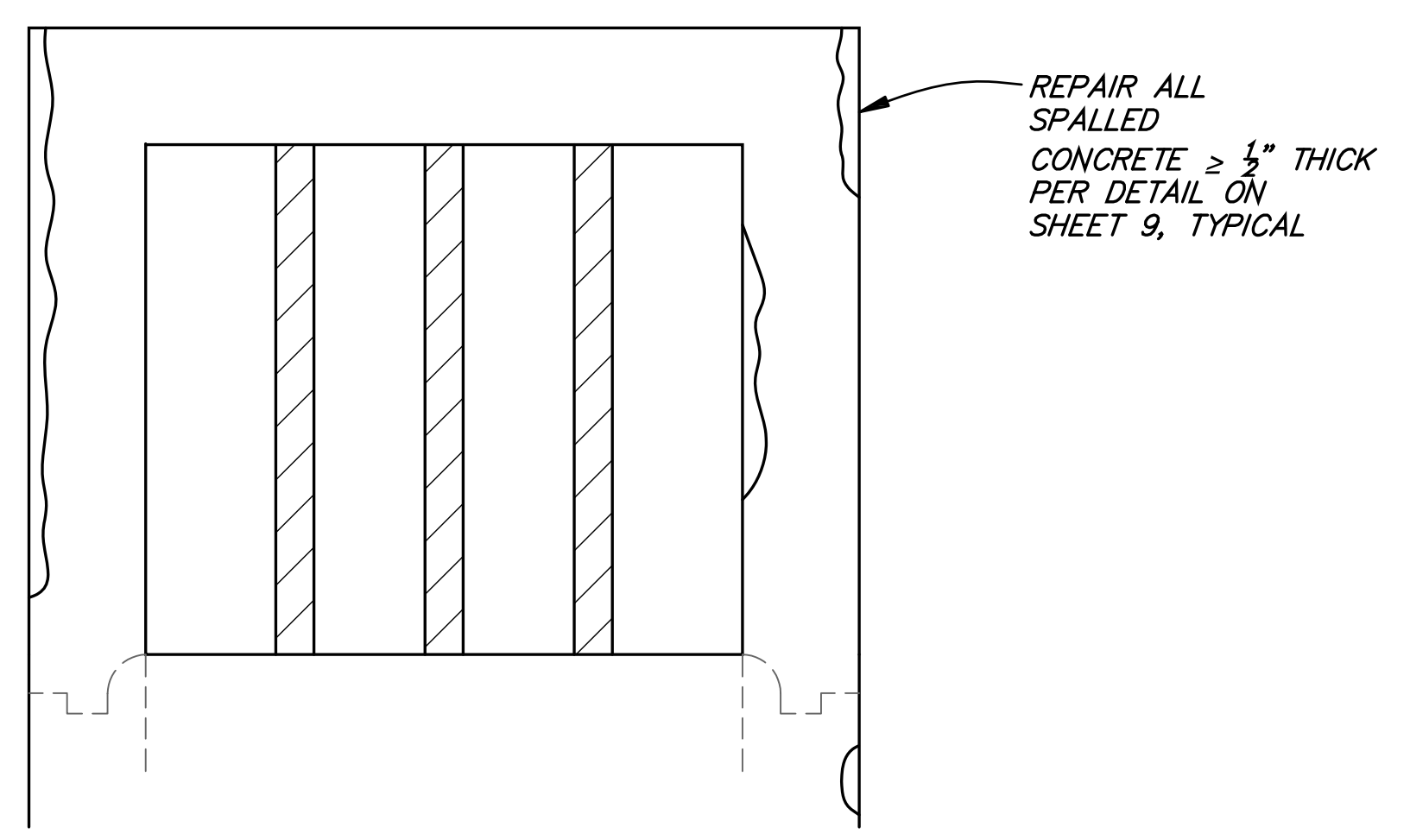


ROOF CORNER DETAIL
N.T.S.

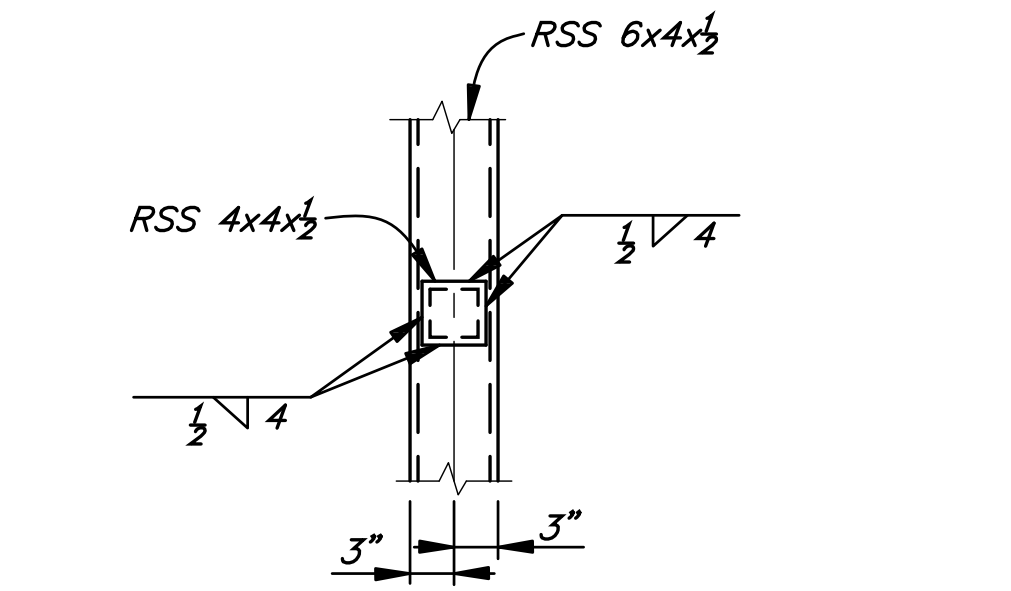


COLUMN ARMOR DETAIL
N.T.S.

RECONSTRUCT INLET TOWER "A"
N.T.S.

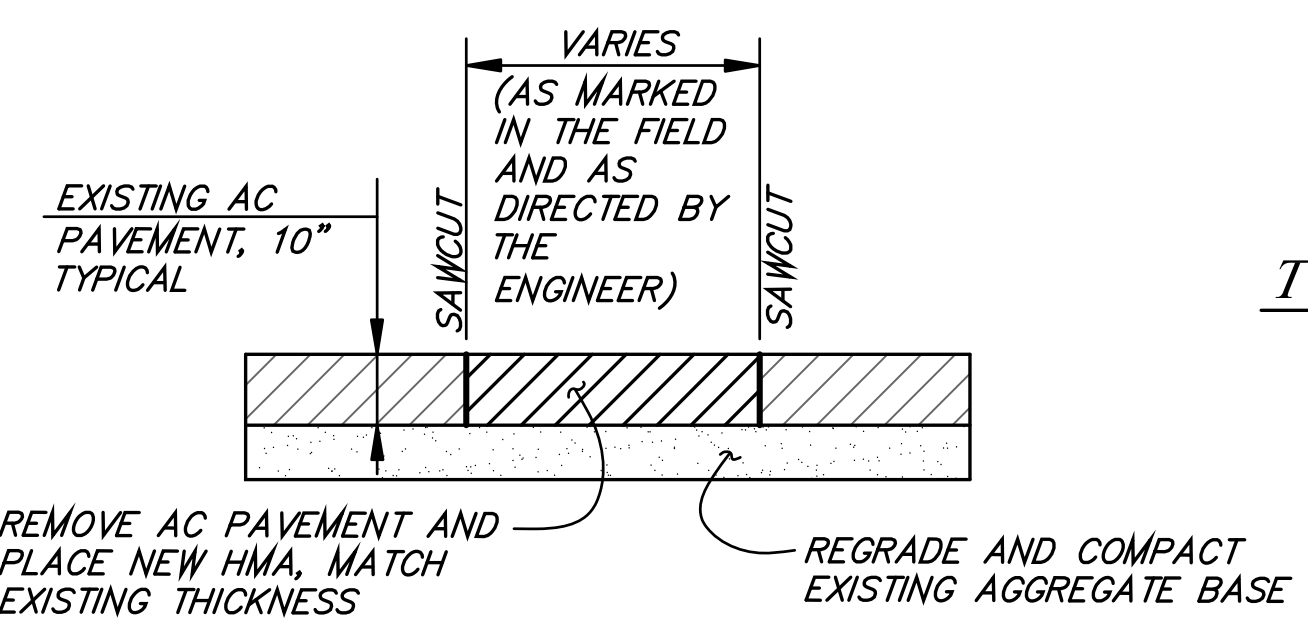


REPAIR INLET TOWERS "A" & "B"
N.T.S.

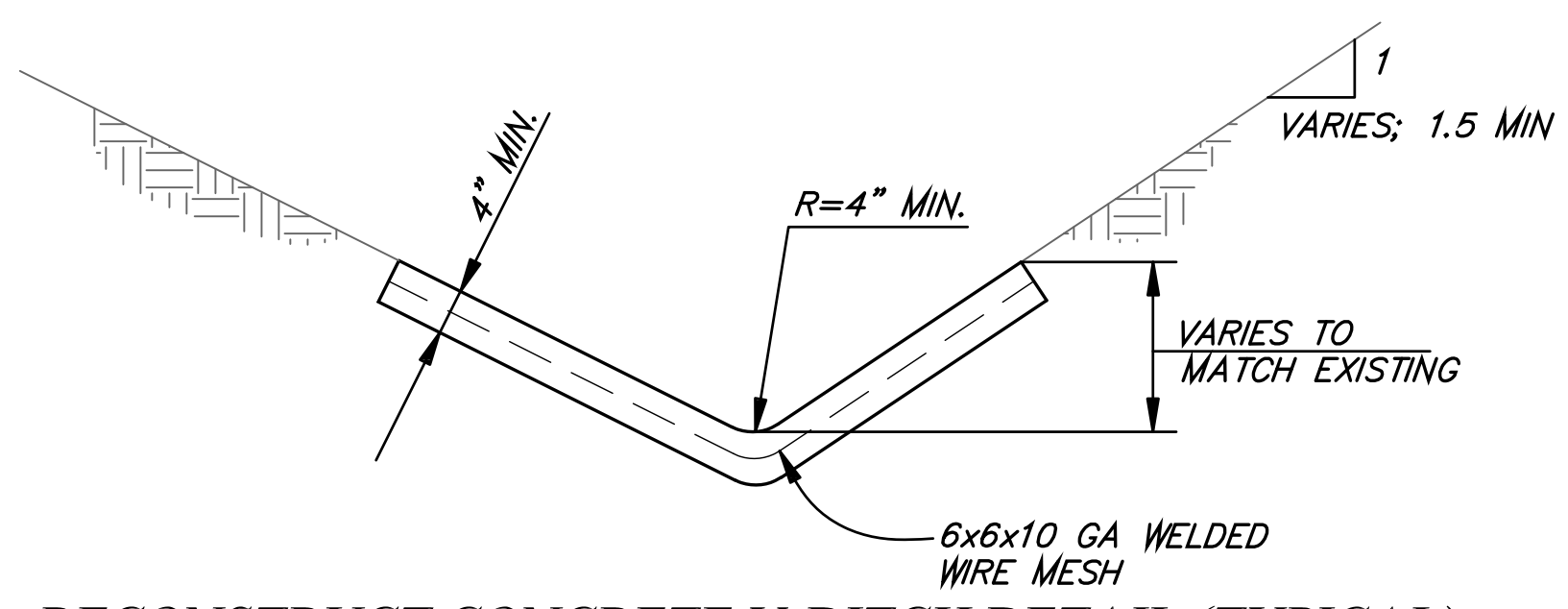


TYPICAL CROSS BAR CONNECTION DETAIL
N.T.S.

MODIFIED TRASH RACK
N.T.S.



REPAIR ASPHALT CONCRETE PAVEMENT (TYPICAL)
N.T.S.



RECONSTRUCT CONCRETE V-DITCH DETAIL (TYPICAL)
N.T.S.

ALL UNDERGROUND UTILITIES SHOWN ARE PLOTTED BASED ON INFORMATION PROVIDED BY OTHERS, AND ARE APPROXIMATE. OVERHEAD UTILITIES ARE NOT SHOWN.

THE SANTA BARBARA COUNTY FLOOD CONTROL DISTRICT IS NOT RESPONSIBLE FOR THE ACCURACY OF THIS INFORMATION. CONTRACTOR SHALL NOTIFY UNDERGROUND SERVICE ALERT A MINIMUM OF TWO WORKING DAYS PRIOR TO COMMENCEMENT OF ANY EXCAVATION @ 1-800-422-4133.

UNAUTHORIZED CHANGES OR USES:
THE SANTA BARBARA COUNTY FLOOD CONTROL & WATER CONSERVATION DISTRICT AND ITS EMPLOYEES WILL NOT BE RESPONSIBLE FOR, OR LIABLE FOR, UNAUTHORIZED CHANGES TO OR USES OF THESE PLANS. ALL PROPOSED CHANGES TO THE PLANS MUST BE PRESENTED IN WRITING TO THE DISTRICT AND APPROVED IN WRITING BY THE DISTRICT PRIOR TO IMPLEMENTATION OF ANY SUCH CHANGE OR USE.

<table border="1"> <thead> <tr> <th colspan="4">REVISIONS</th> </tr> <tr> <th>NO.</th> <th>DESCRIPTION</th> <th>DATE</th> <th>APR</th> </tr> </thead> <tbody> <tr> <td> </td> <td> </td> <td> </td> <td> </td> </tr> <tr> <td> </td> <td> </td> <td> </td> <td> </td> </tr> <tr> <td> </td> <td> </td> <td> </td> <td> </td> </tr> </tbody> </table>				REVISIONS				NO.	DESCRIPTION	DATE	APR														DESIGNED BY: <i>Mark Brunken</i> 8/14/2018 FLOOD CONTROL DESIGN ENGINEER	SANTA BARBARA COUNTY FLOOD CONTROL AND WATER CONSERVATION DISTRICT 130 E. VICTORIA STREET SANTA BARBARA, CA 93101 (805) 568-3440		DEBRIS BASIN RESTORATION PROJECTS THOMAS FIRE 1-9 DEBRIS FLOW INCIDENT AREAS OF MONTECITO AND CARPINTERIA SANTA BARBARA COUNTY, CALIFORNIA	DETAILS	DESIGNED BY: MG DRAWN BY: OR CHECKED BY: JF	O-1140 SHEET 10 OF 10 Filename: Basins repair.DWG
REVISIONS																															
NO.	DESCRIPTION	DATE	APR																												