

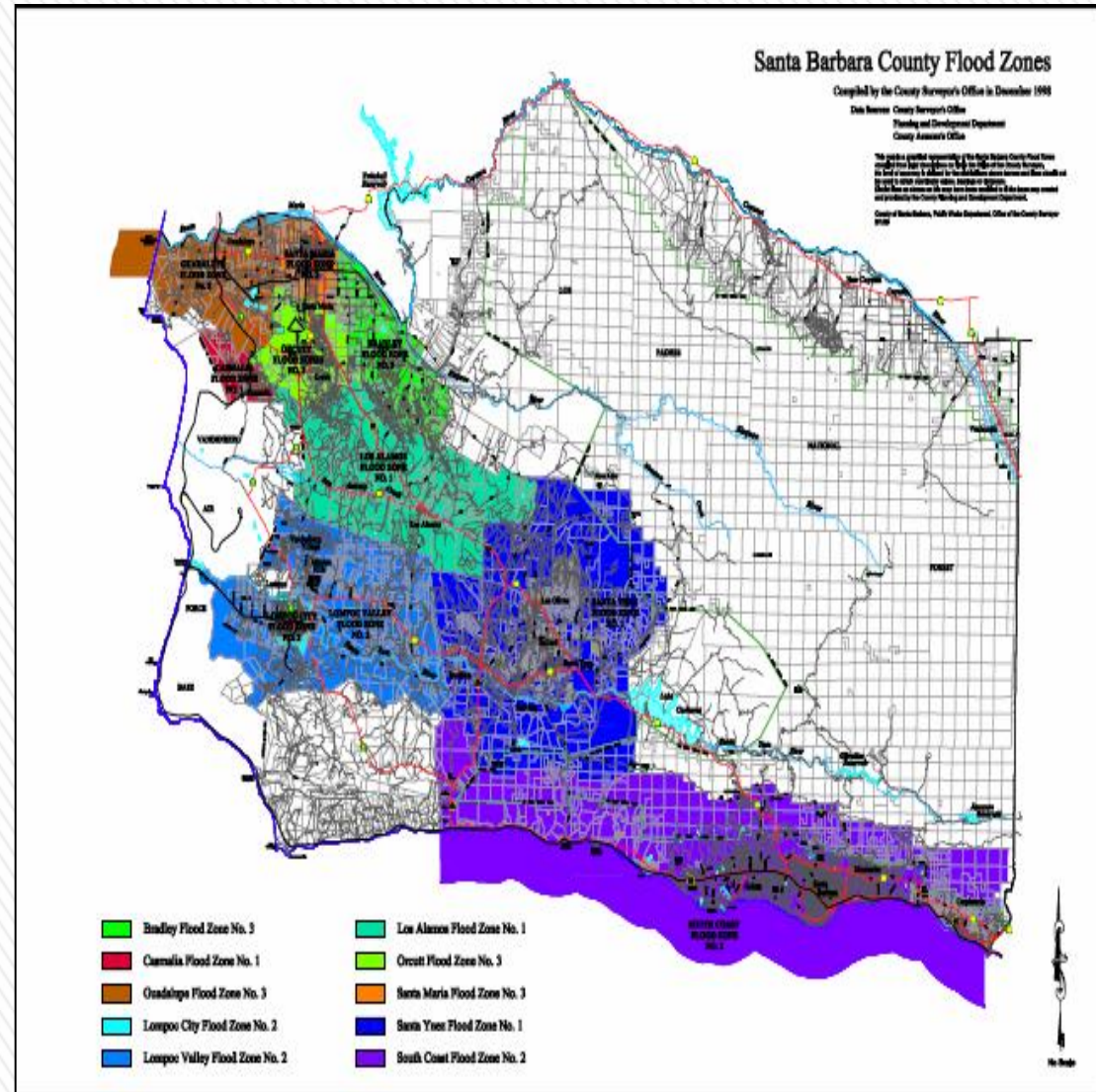


Santa Barbara County Flood Control District

Benefit Assessment Program Update
Board of Supervisors Meeting
June 16, 2015

Flood Control Benefit Assessments

- » Voter Approved Assessments
- » Assessment Approved with an Annual CPI Adjustment to Preserve Funding Levels
- » Proposed Increase 0.5% for FY 2015-16



Proposed Benefit Assessment Rates

FY 2015-16

	Group A		Group B		Group C		Group D		Group E	
	FY 2015-2016		FY 2015-2016		FY 2015-2016		FY 2015-2016		FY 2015-2016	
	\$/Ac	Min \$ Assmt	\$/Ac	Min \$ Assmt	\$/Ac ¹ (over 0.3 Ac only)	Min \$ Assmt	\$/Ac	Min \$ Assmt	\$/Ac	Min \$ Assmt
Bradley #3	40.94	12.29	30.70	9.21	0.00	6.18	1.53	0.45	0.15	0.04
Guadalupe #3	21.68	6.50	16.26	4.89	0.00	3.26	0.82	0.25	0.08	0.02
Lompoc City #2	91.46	27.44	68.58	20.57	0.00	13.73	3.44	1.03	0.33	0.09
Lompoc Valley #2	35.72	10.70	26.77	8.03	0.00	5.34	1.33	0.40	0.14	0.03
Los Alamos #1	45.41	13.63	34.07	10.21	0.00	6.81	1.70	0.50	0.17	0.04
Orcutt #3	27.22	8.17	20.41	6.13	0.00	4.09	1.02	0.30	0.10	0.03
Santa Maria #3	87.07	26.13	65.31	19.64	0.00	13.05	3.27	0.99	0.30	0.09
SMR Levee	23.49	7.05	17.62	5.29	0.00	3.54	0.87	0.27	0.09	0.02
SantaYnez #1	20.06	6.02	15.05	4.51	0.00	3.00	0.75	0.23	0.08	0.02
South Coast #2	152.85	45.86	114.63	34.39	0.00	22.93	5.73	1.72	0.57	0.17



Recommendations



- Approval of Items A, B, and C
 - First Reading

- Return July 7, 2015 for Second Reading and Final Adoption (Admin Agenda)