



# Price Scanning System and Device Registration Fees

Santa Barbara County Department  
of Agriculture and Weights &  
Measures

February 7, 2012

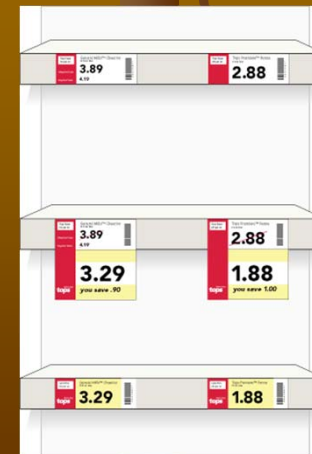
# Purpose



- Protect consumers and local businesses by:
  - Creating a sustainable **price scanner** accuracy program with full-cost recovery.
  - Creating a sustainable **device** inspection program by aligning device registration fees with current costs and state law.

# Responsibilities - Scanners

- The County Director of Weights and Measures is responsible for protecting consumers and businesses by verifying the accuracy of price scanning systems (scanners)



# Justification - Scanners

- 2010 County-wide price verification survey results:
  - Items overcharge rate: 7%
  - Items undercharge rate: 2.1%
  - State-wide overcharge average: 2.6%
  - Counties with price scanning ordinances have an overcharge average: 1.92%

# 2010 U.S. Census Bureau for Santa Barbara County



Total retail sales	\$5,000,000,000
Retail sales per capita	\$12,000
Overcharges per capita	\$96
<b>Overcharge in dollars</b>	<b>\$40,000,000</b>
<b>Local Businesses lose</b>	<b>\$33,800,000</b>

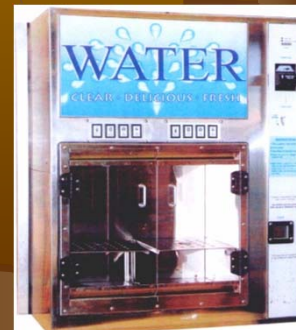
# Price Scanner Fee Comparison

<u>County</u>	(Scanners per location)		
	<u>1-3</u>	<u>4-9</u>	<u>10 or more</u>
<b>Santa Barbara (proposed)</b>	<b>\$80</b>	<b>\$160</b>	<b>\$240</b>
Los Angeles	\$160	\$240	\$300
Ventura	\$180	\$300	\$300
San Bernardino	\$200	\$200	\$200
San Diego	\$178	\$184	\$196
Riverside	\$160	\$240	\$300
Imperial	\$89	\$129	\$240
Santa Cruz	\$180	\$270	\$270
Santa Clara	\$200	\$300	\$300
Marin	\$180	\$270	\$270
San Mateo	\$178	\$297	\$297
<b>Average (does not incl. Santa Barbara Co.)</b>	<b>\$171</b>	<b>\$243</b>	<b>\$267</b>



# Responsibilities - Device

- The County Director is also charged with inspecting each commercial weighing and measuring device within their jurisdiction.
- Santa Barbara County fees have not been increased since 1994 and are based on a sliding fee scale.



# Fees - Device

- The fee structure defined in the 2006 law has two components:
  - “Location” fee - new
    - \$100 per location
  - “Device type” fee - adjusted
    - Per-device fee range: \$2 - \$250 per device.



# Recommendation

- Adopt the revision to ordinance 34-C, Weights and Measures.
- Adopt the amendment to the Agricultural Commissioners Fee schedule.

