

CREF PROPOSAL
THE DUNES CENTER



Preservation and Restoration

The Dunes Center



The purpose of the Dunes Center is to operate a community-based museum that orients and educates residents and visitors.

Nature & Science Education Programming



1923 The Ten Commandments





The archaeological site is one of the features that creates a unique sense of place.



CREF Criteria

1. Located in Coastal Area
2. Compensation for Sensitive Resources through Tourism
3. Broad Public Support
4. Priority (Capital Improvement)
5. In-Kind Services
6. Self-Supporting
7. Lack Viable Funding Mechanisms
8. High Probability of Success



Why this project matters to our Community

Promotes Tourism

Positive PR

Preserves Uniqueness of the Community

Creates a sense of community pride

Gives the Tourists a Reason to Visit Guadalupe

Increases Money in Local Economy

Exposes people to our coastline that wouldn't normally be interested

Los Angeles Times AA

LATEXTRA

SATURDAY, OCTOBER 18, 2014 • LATIMES.COM/LANOW



Deasy exits with a pass on iPads

L.A. Unified says it expects the ongoing inquiry to clear him of any misconduct in troubled program.

By HOWARD BLOOMER AND STEPHEN CHABAR

As part of its settlement this week with former school chief, John Deasy, the Los Angeles Board of Education declared that it did not believe Deasy had done anything wrong in connection with the project to provide students with iPads, even though the district has an ongoing investigation into the propriety of the bidding process.

The annual provision was one of the more striking elements of a separation agreement released Thursday by the L.A. Unified School District. Under it, Deasy will remain on salary till the end of the year, worth more than \$700K, and he will get extended benefits and cannot be named in vacation days.

But this deal also included a carefully negotiated provision: "The board wishes to state that at this time it does not believe that the Superintendent engaged in any official violations or unethical acts," the statement read in part.

It also made reference to the ongoing inquiry, adding that "the board anticipates that the Inspector General's report will continue" that Deasy acted appropriately.

The former schools chief came under scrutiny for his role in the \$1.8-billion iPad project when emails recently released showed that he had a top aide had communicated with vendors that the bidding process, Deasy has denied any wrongdoing.

The flap was one of several that added to friction between the superintendent and his bosses. In response to the disclosure, board members asked their inquiry to clear him of any misconduct in troubled program.

Deasy resigned after a tumultuous 3½-year stint as superintendent, marred by disagreements with the school board and problems with high-profile initiatives but boosted by significant gains in important markers.

(See Deasy, A4)



RIDDLE ANSWERED

Archaeologists unearth the body of a plaster sphinx left in coastal dunes after a 1923 Cecil B. DeMille silent film

By HALEY BRANSON-POTTS

Buried beneath the shifting sands of the Chatsworth National Dunes is a story of biblical proportions.

In 1923, legendary filmmaker Cecil B. DeMille took an epic Egyptian dramedy on California's Central Coast for the silent block-and-white movie "The Sign of the Cross."

"Twenty-one giant sphinxes lined a path to an 800-foot-wide temple, legend has it that after the flint was down, the set was too expensive to move and too valuable to leave for rival filmmakers to poach — so DeMille had it pushed into a trench and buried."

And so there the sphinxes lay, entombed in groves of sand for nine decades just outside the small farming town of Chatsworth, where they were mostly forgotten.

Until now.

Archaeologists this week unveiled a plaster sphinx from what has now been dubbed the First City of DeMille.

"It's a once-in-a-lifetime kind of site," said M. Colleen Hamilton, a specialist in ancient Egyptology with Applied Earth/Work and project director for the excavation. "I've worked on sites all over the country and I think this one could only happen in California."

At the time the silent film was made, crew members built the sphinxes in Los Angeles and transported them, piece by piece to Chatsworth, where they were assembled on set, Hamilton said.

A sphinx was partially entombed in 1963, when archaeologists contracted by the Chatsworth-Nipomo Dunes Center found fragile plaster pieces of its head, which have since been reassembled and put on display at the center.

But time and money ran out before that added to friction.

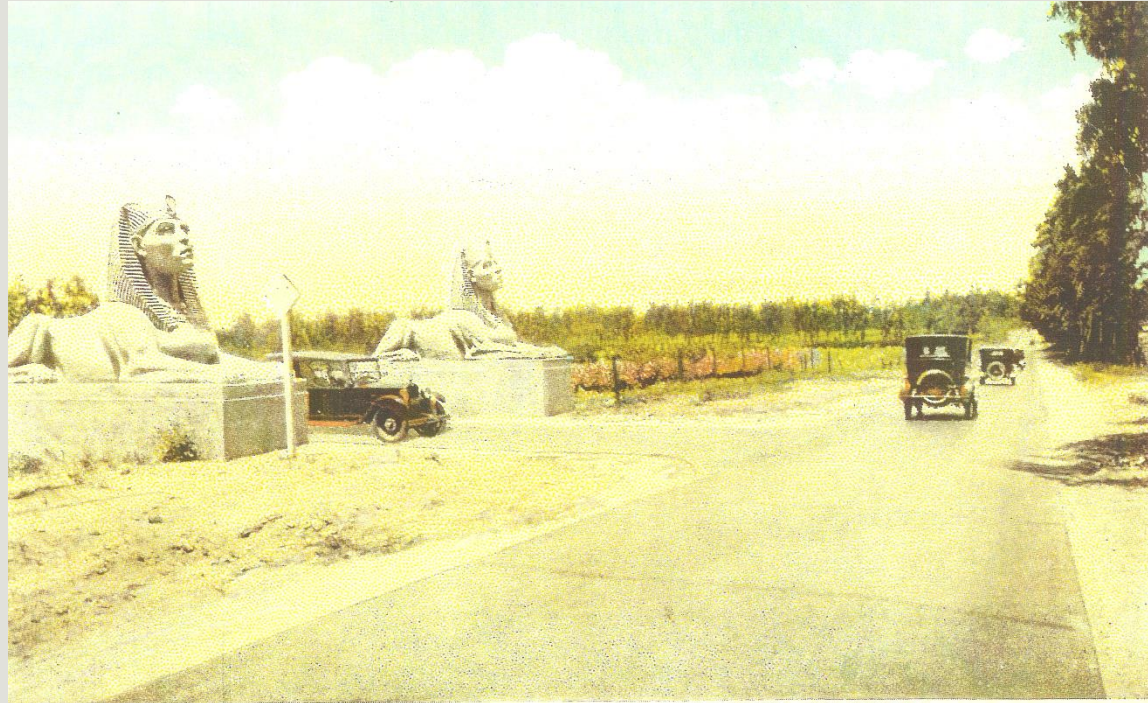
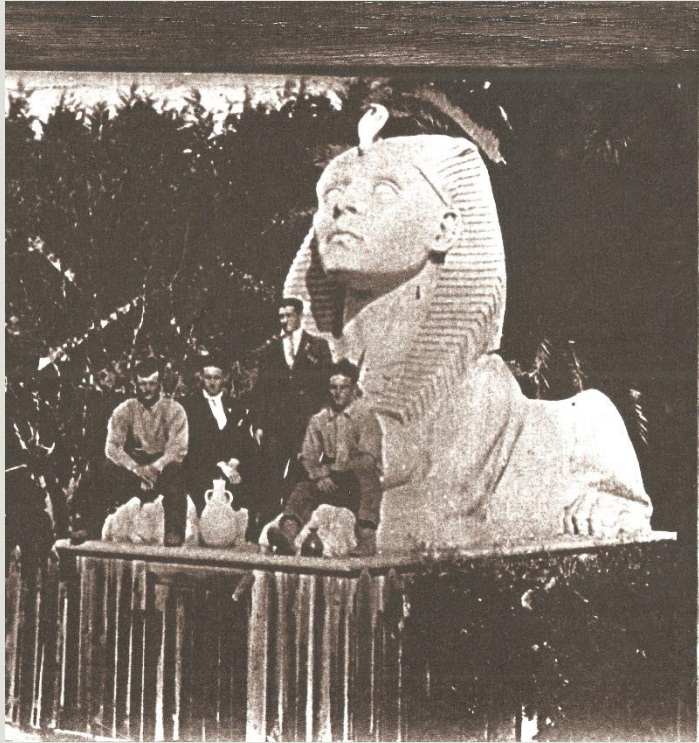
THE PLASTER of the sphinx had worn paper thin by the time archaeologists uncovered the statue and worked to preserve its remains.

Its first nose was discovered Wednesday by students and faculty hanging from a tree at Weather High School in Lakewood, which had just begun its football

Why Now?

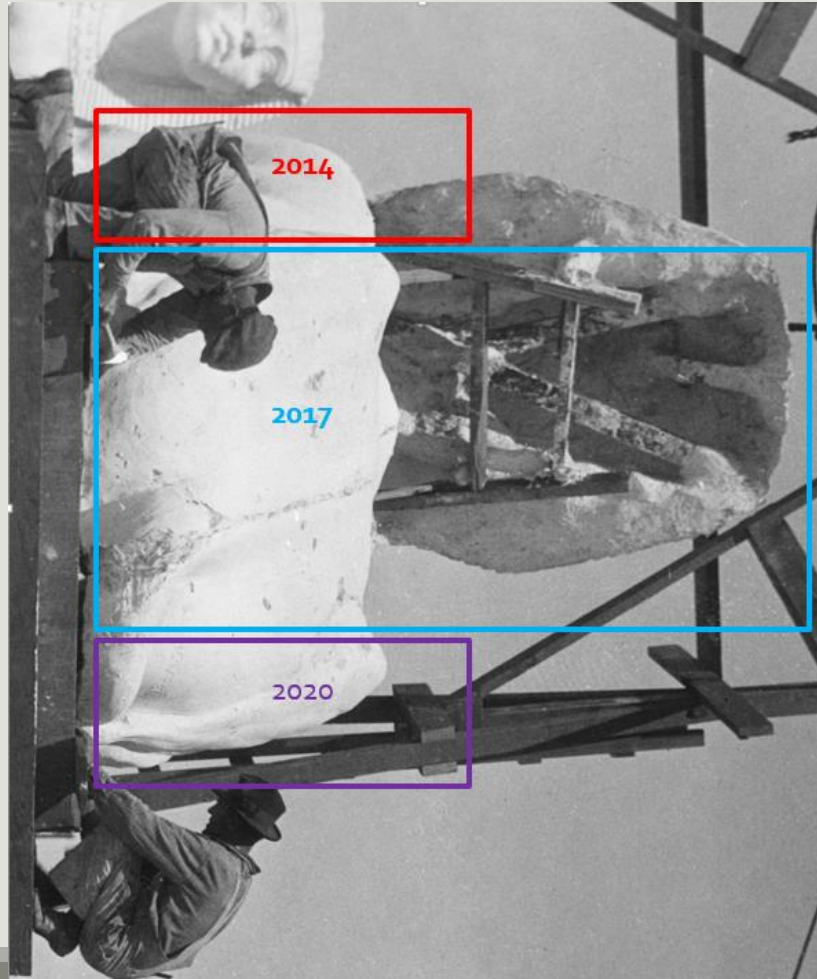


It's Our Last Chance



ENTRANCE TO SANTA MARIA GOLF COURSE, SANTA MARIA, CALIFORNIA.

We're so close!



Proposal in Two Parts



Excavation - hire archaeological firm to excavate and preserve sphinx body artifacts

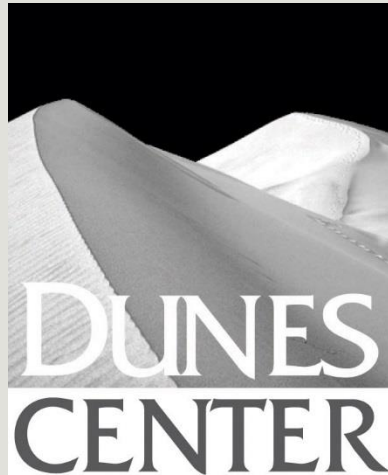
Restoration - hire art restorers to reassemble pieces

Ultimate Goal



Repeat of Past Success





Thank You!