

Goleta Water District Drought Status

Santa Barbara County
Board of Supervisors Meeting
October 2014

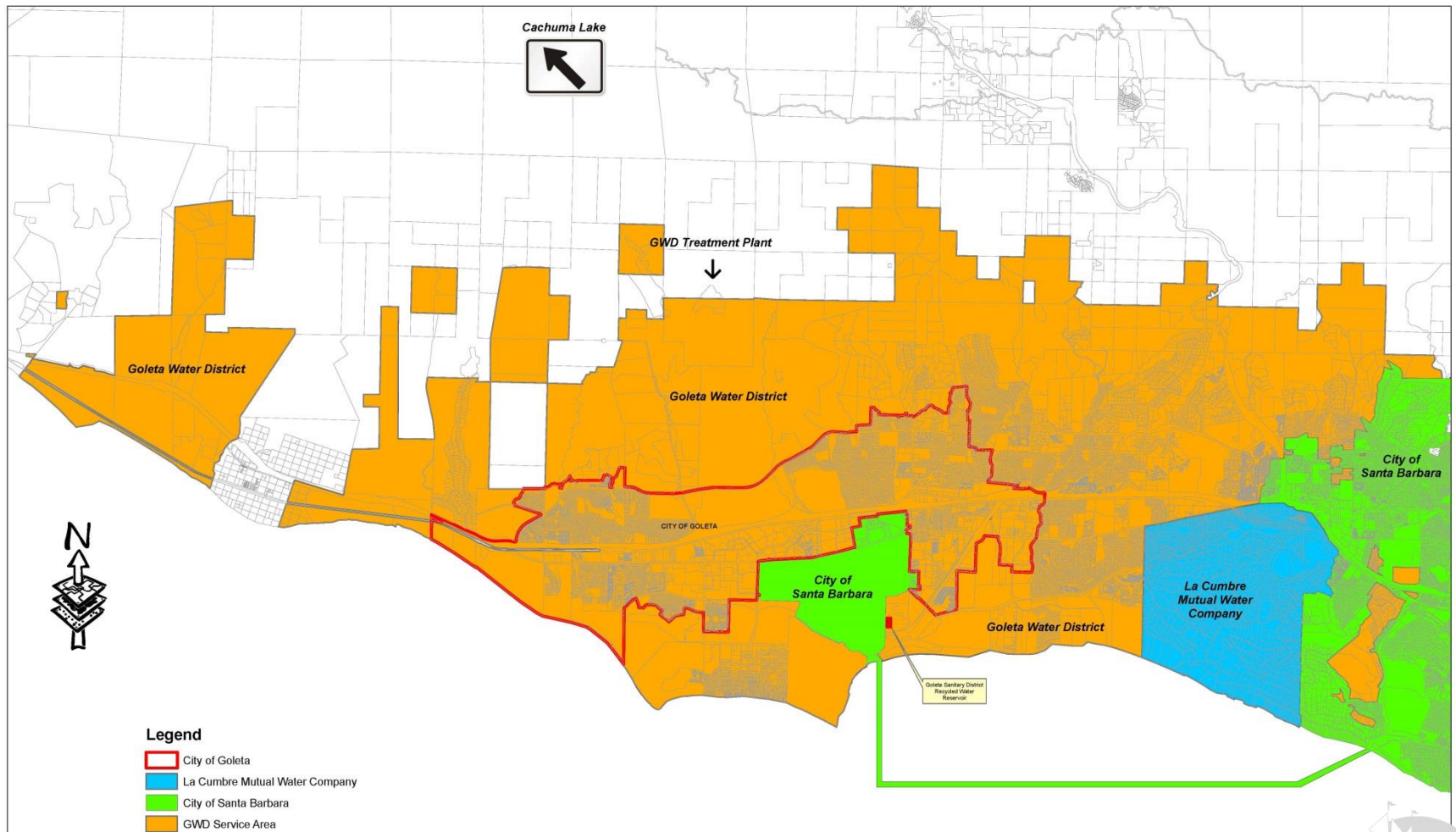


Goleta Water District

- Established in 1944
- “Special District” organized under Division 12 of the CA Water Code
- 5-member elected Board
- Provides water to more than 87,000 people in the Goleta Valley
- Spans approximately 29,000 acres



Goleta Water District



Goleta Water District Service Area



Water Deficit Ratio

$$\frac{\text{Total Supply}}{\text{Total Demand}} = \text{“Water Deficit Ratio”}$$



Goleta Water District 2014/15 WY Projected Supply

	Cachuma	Groundwater	State	Total	Recycled
2013/14 WY	9,538	3,061	4,414	17,013	1,000
2014/15 WY	7,323	5,163	497	12,983	1,000
% Change	(-25%)	69%	(-91%)	(-25%)	NA



Goleta Water District 2014/15 WY Projected Demand

	Residential	Commercial	Agriculture	Irrigation	Total Demand
Projected Demand <u>without</u> reductions:	6,582	2,551	4,126	489	13,748
Projected Demand <u>with</u> Reductions:	5,216	1,962	3,390	232	10,800
% Change:	- 21%	- 24%	- 18%	- 53%	- 21%



Goleta Water District Projected Water Deficit Ratio

$$\frac{\text{Total Supply}}{\text{Total Demand}} = 1.2$$

12,983

10,800



Goleta Water District Projected Supply and Demand

