

Cachuma Lake

A scenic view of Cachuma Lake with snow-capped mountains in the background and a forested hillside in the foreground. The sky is clear and blue.

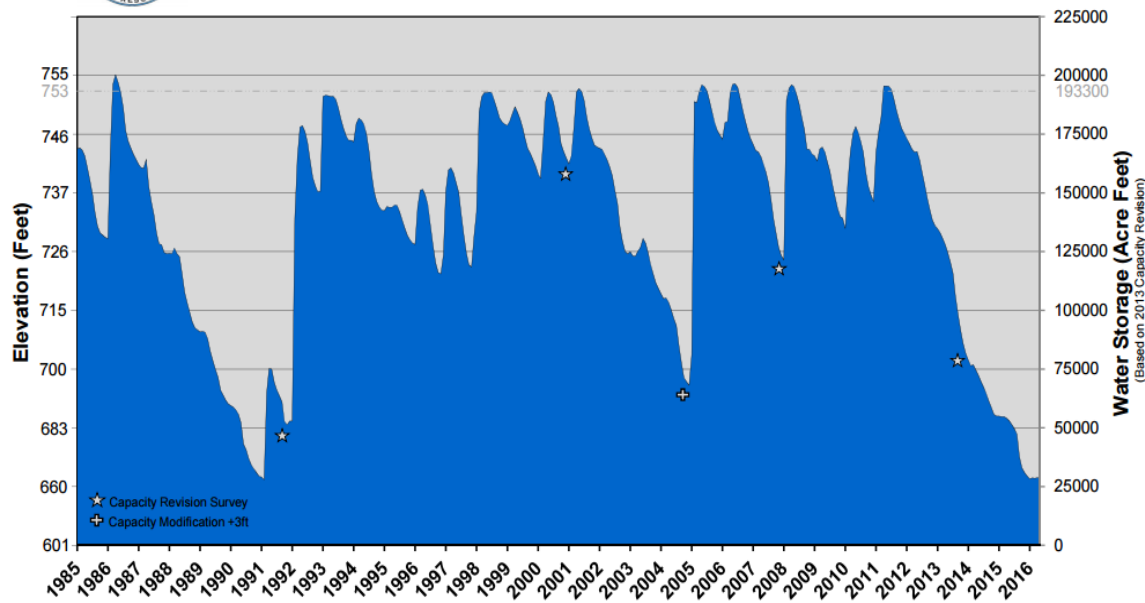
Update
Board of Supervisors
May 3, 2016



Cachuma Reservoir - Historical Water Storage Levels

31 Years - 1985 to 2016

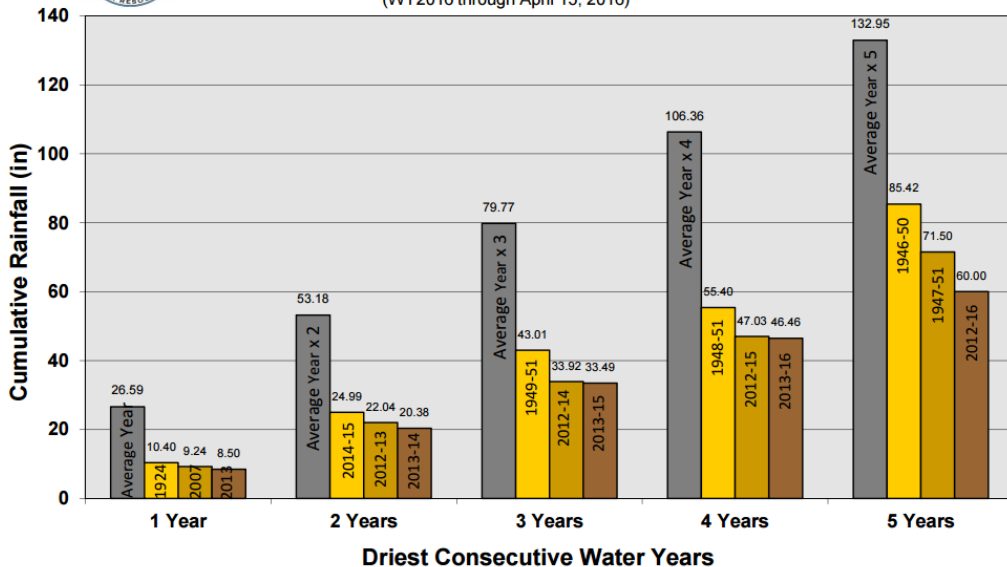
(through April 15th, 2016)



Driest Consecutive Years - Gibraltar

97 Years of Rainfall (1920-2016)

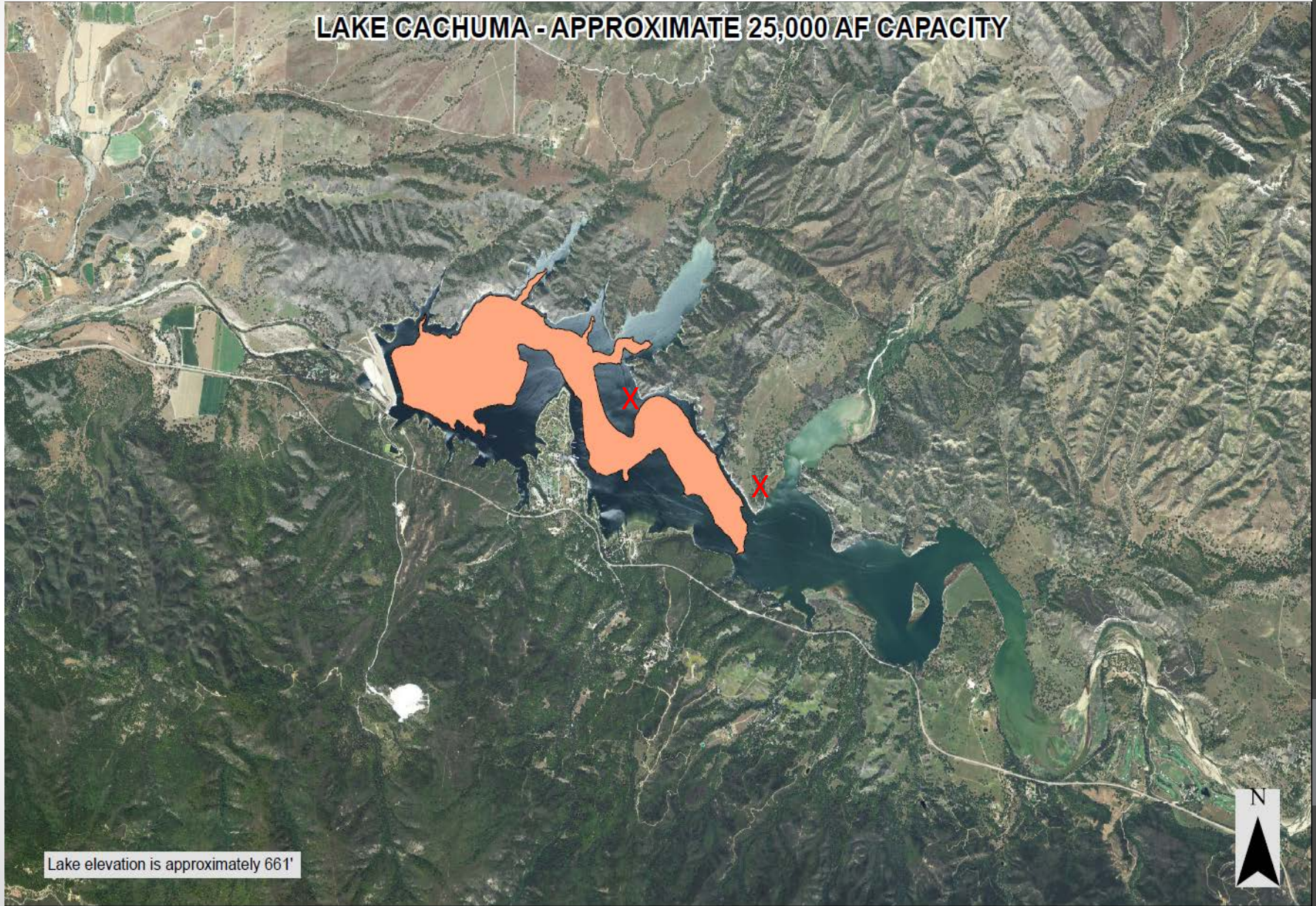
(WY2016 through April 15, 2016)



- Cachuma today:
 - Elevation 660
 - Capacity 25,000

Cachuma Current Lake Footprint

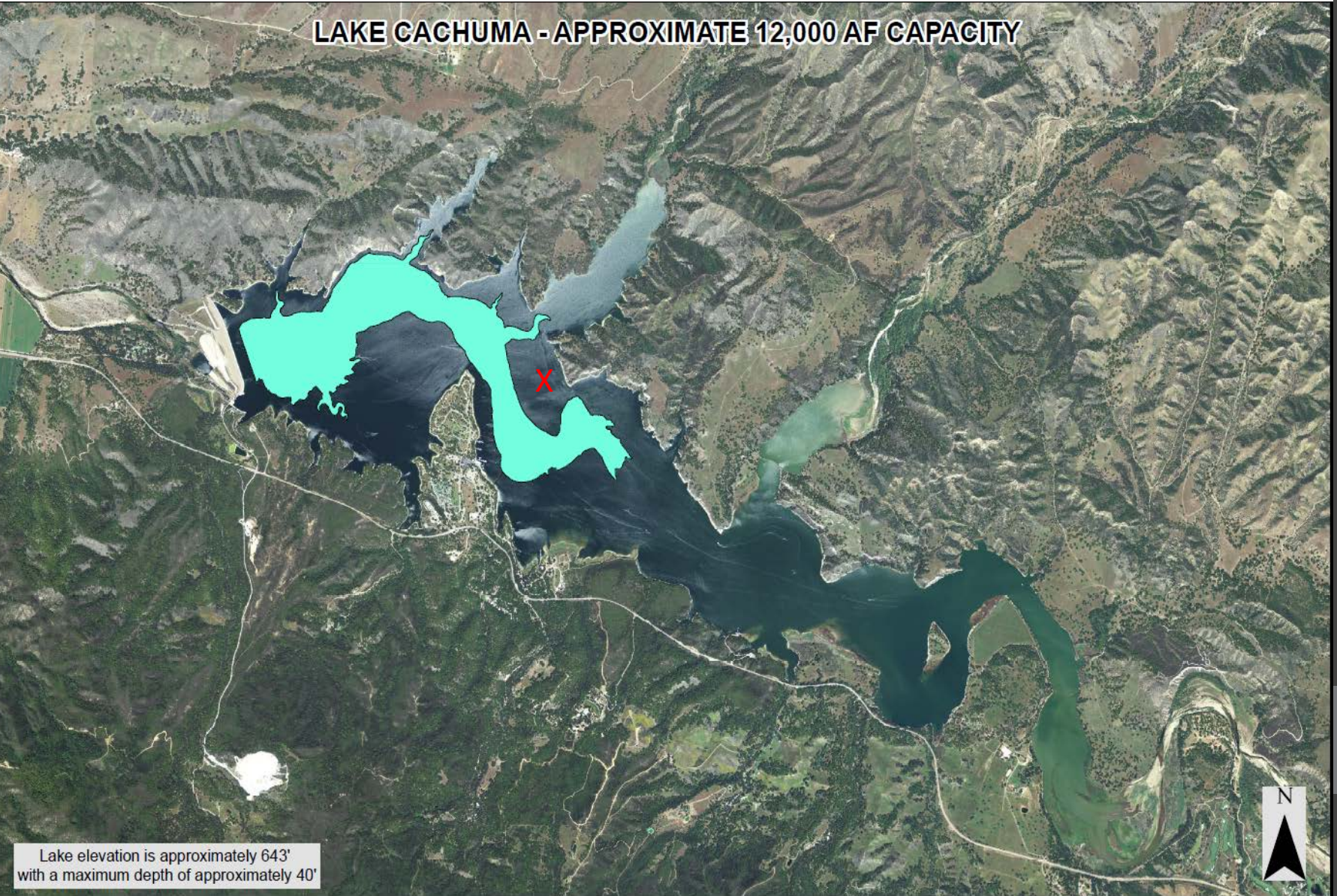
LAKE CACHUMA - APPROXIMATE 25,000 AF CAPACITY



Lake elevation is approximately 661'

Cachuma at Minimum Pool

LAKE CACHUMA - APPROXIMATE 12,000 AF CAPACITY



Lake elevation is approximately 643'
with a maximum depth of approximately 40'

Future Issues

- Cachuma will be at or Near Minimum Pool by end of year
 - Pump Barge move by July 1st
 - Downstream Water Rights Release this Summer
 - SWP deliveries now at Capacity
- Maintaining Minimum Pool is Crucial for:
 - Preservation of important micro-environment
 - Maintain Water Quality
 - Conduit for SWP Deliveries
 - Recreation, USBR recognizes Recreation as a Project Purpose (Multi-Purpose)