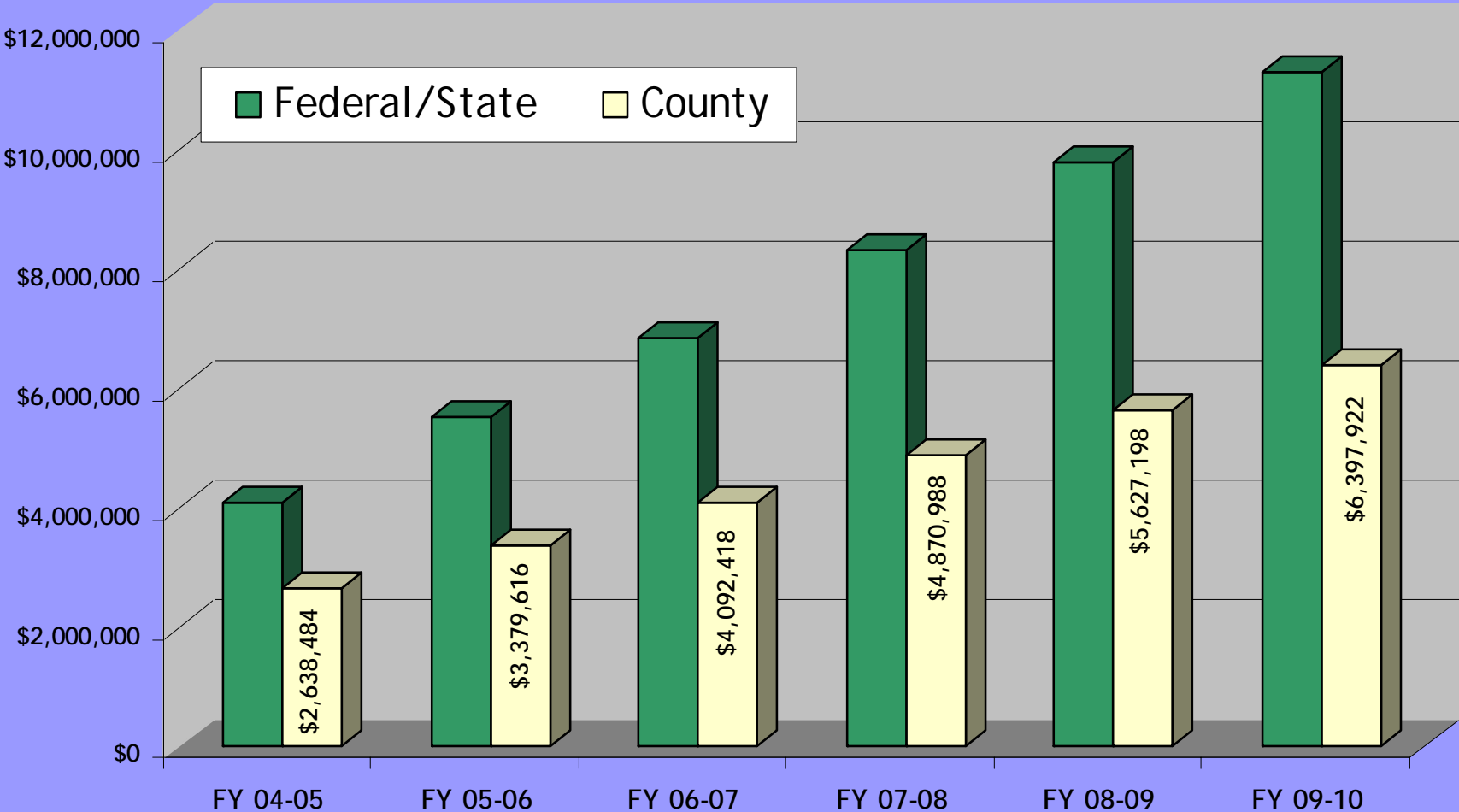


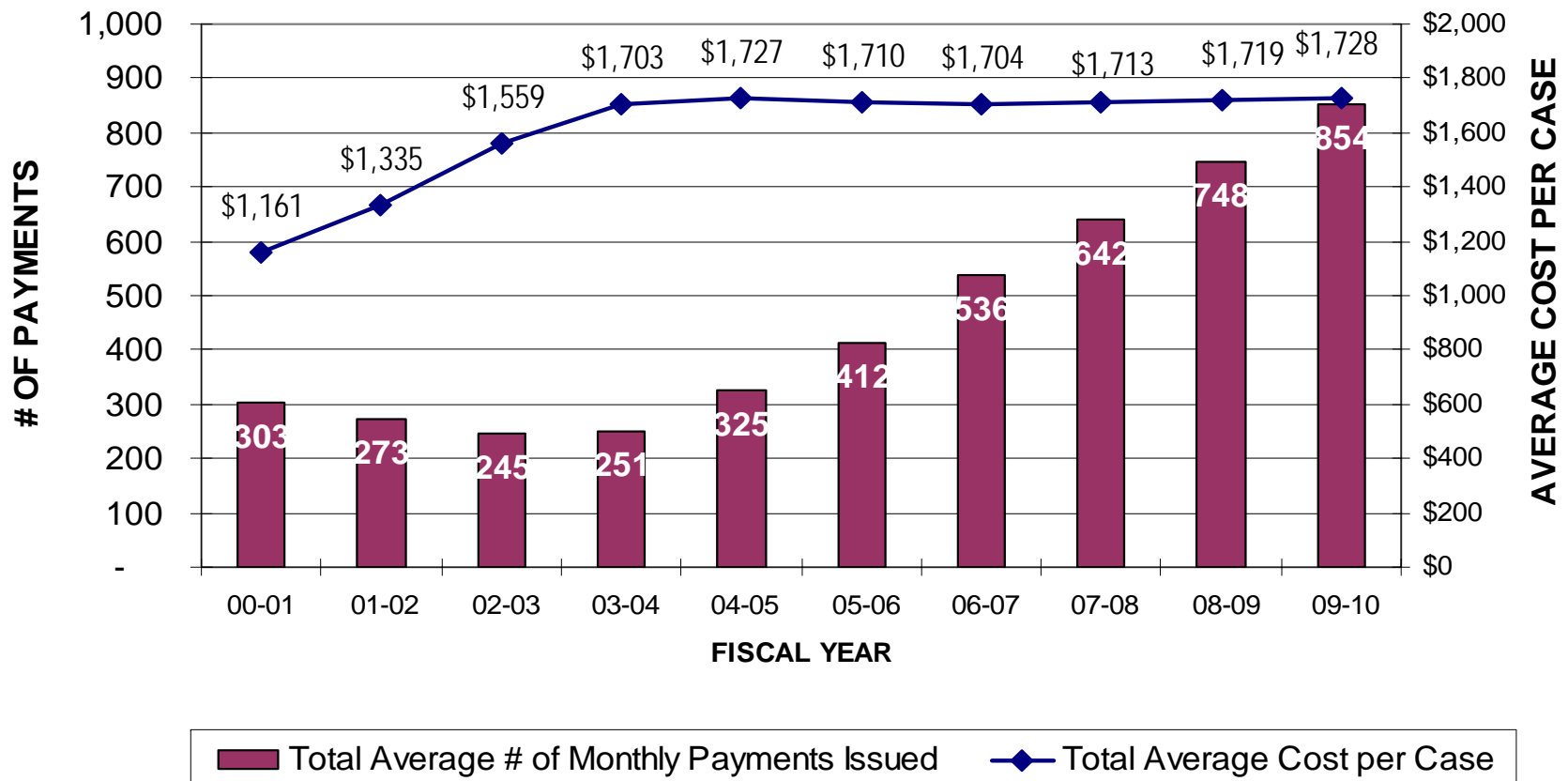
Family Preservation and Protective Services



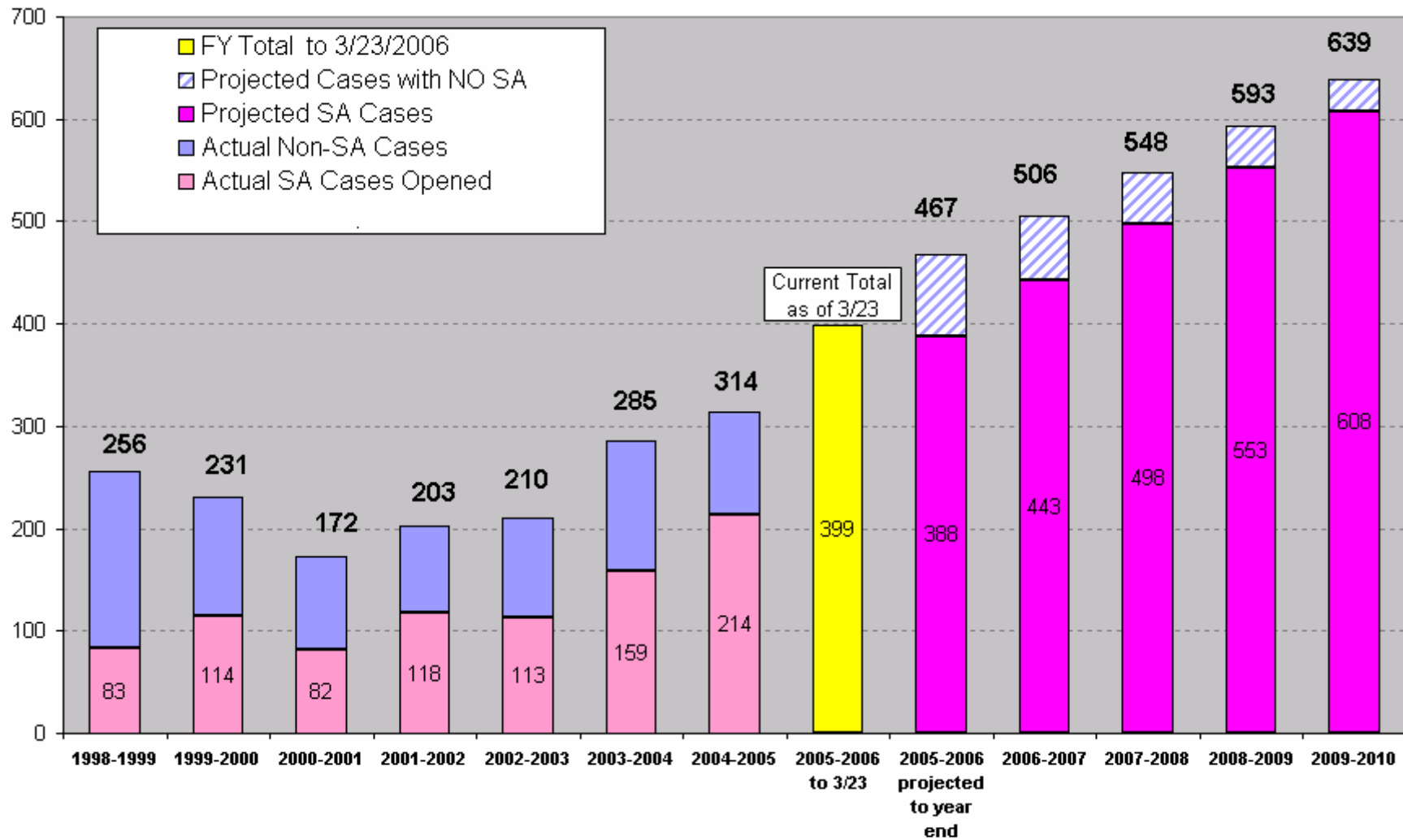
Actual and Projected Foster Care Costs



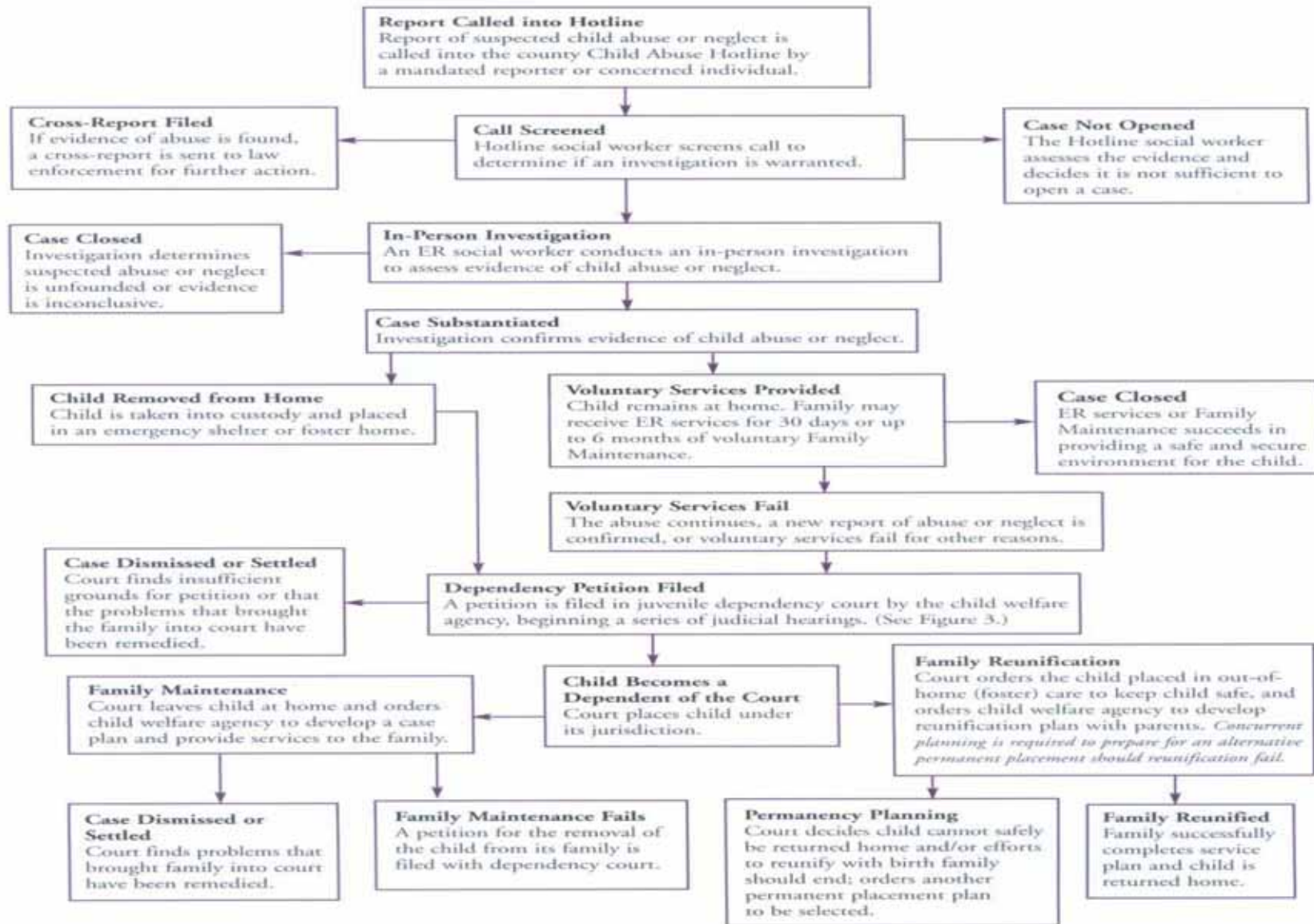
AVERAGE # OF MONTHLY PAYMENTS ISSUED FOR FOSTER CARE AND AVERAGE MONTHLY COST PER CASE



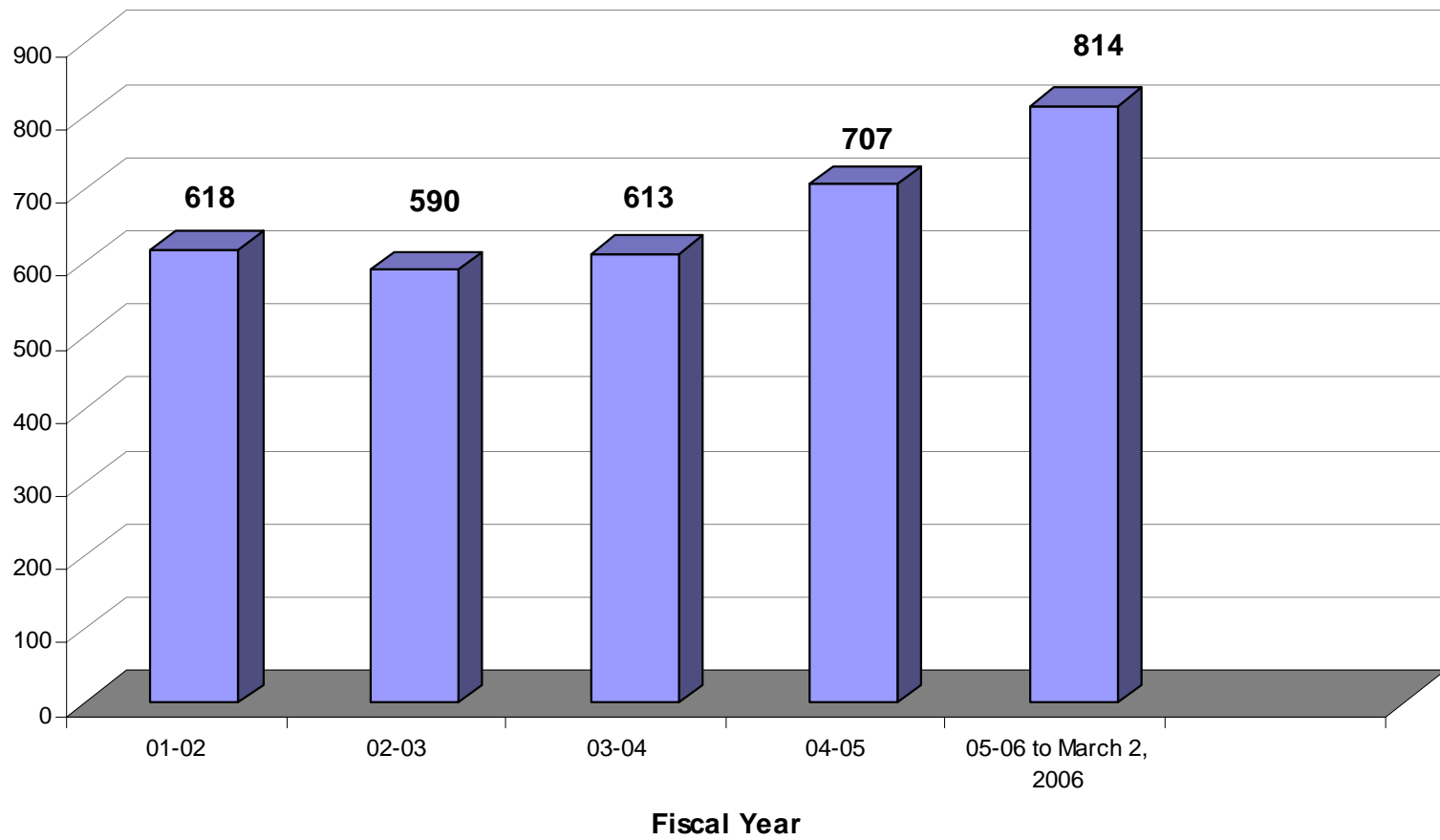
The Role of Substance Abuse in New Cases Being Opened Actual and Projected



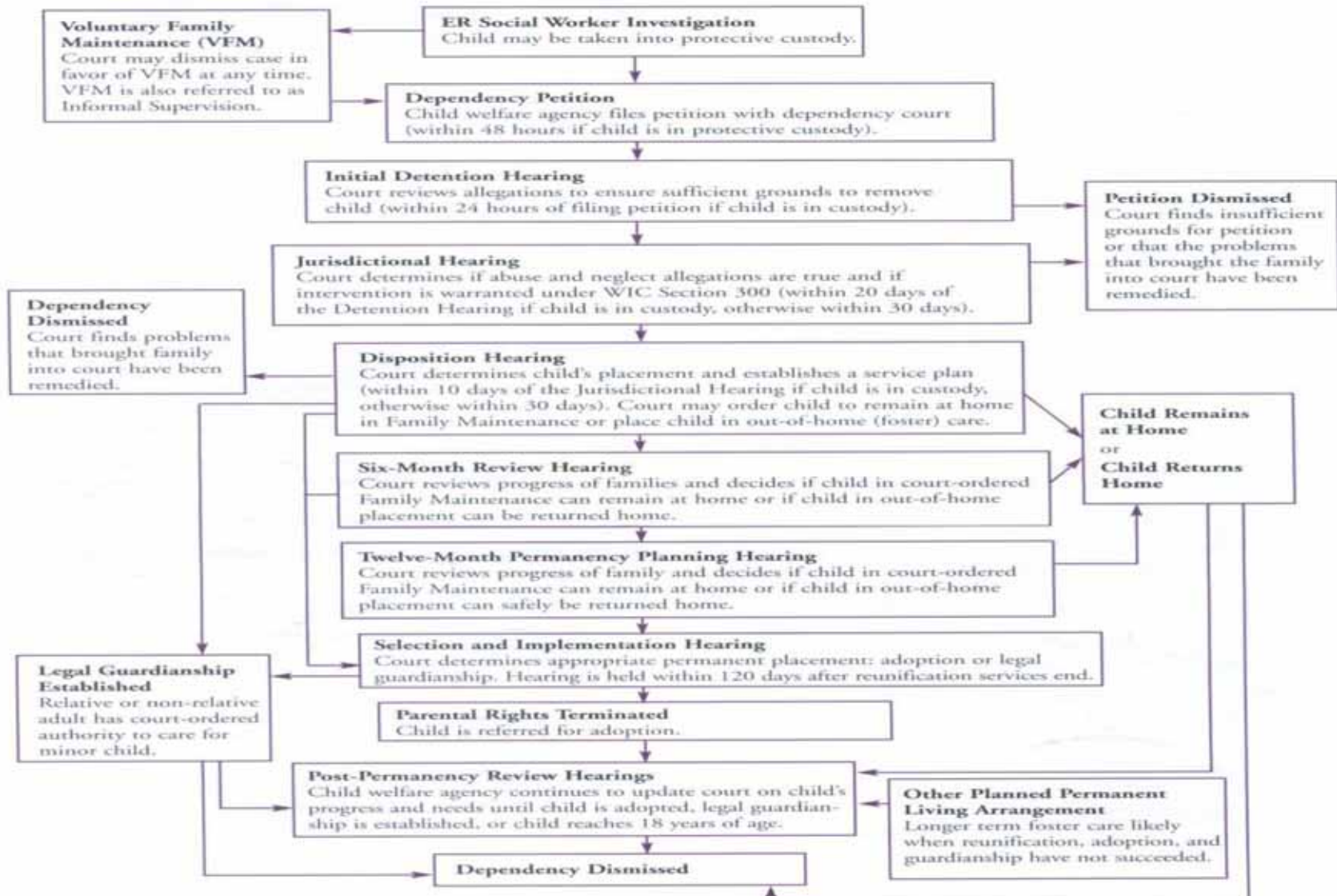
Going Through the Child Welfare System



CWS Court-Supervised Cases Open During the Fiscal Year

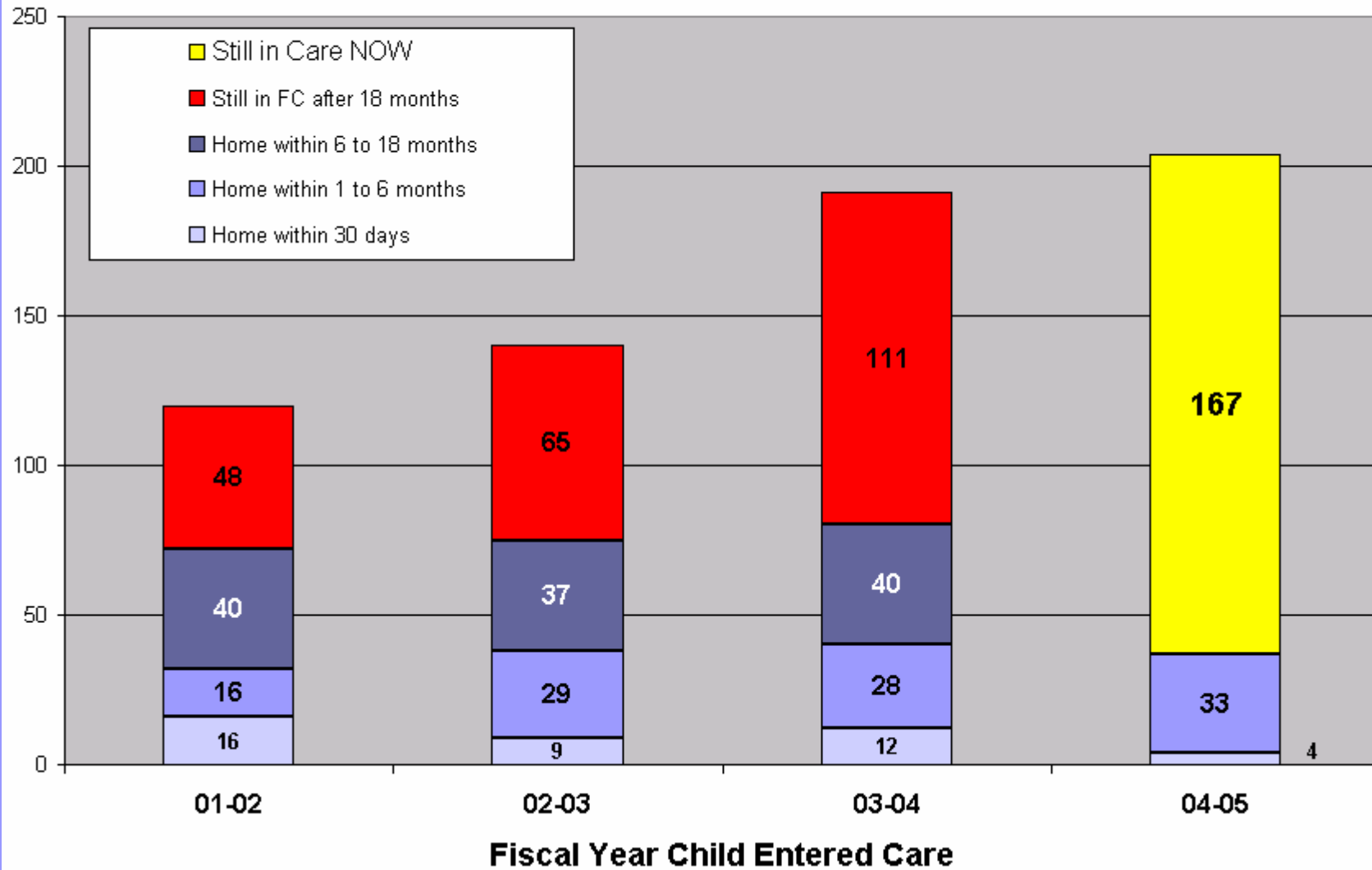


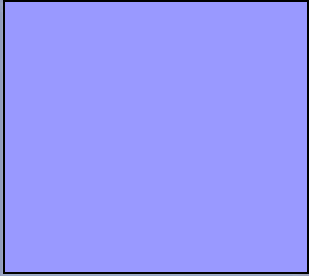
Juvenile Dependency Court Process



Adapted with permission from *Flow Chart of the Administrative Office of the Courts*, published by the Center for Families, Children and the Courts, Judicial Council of California.

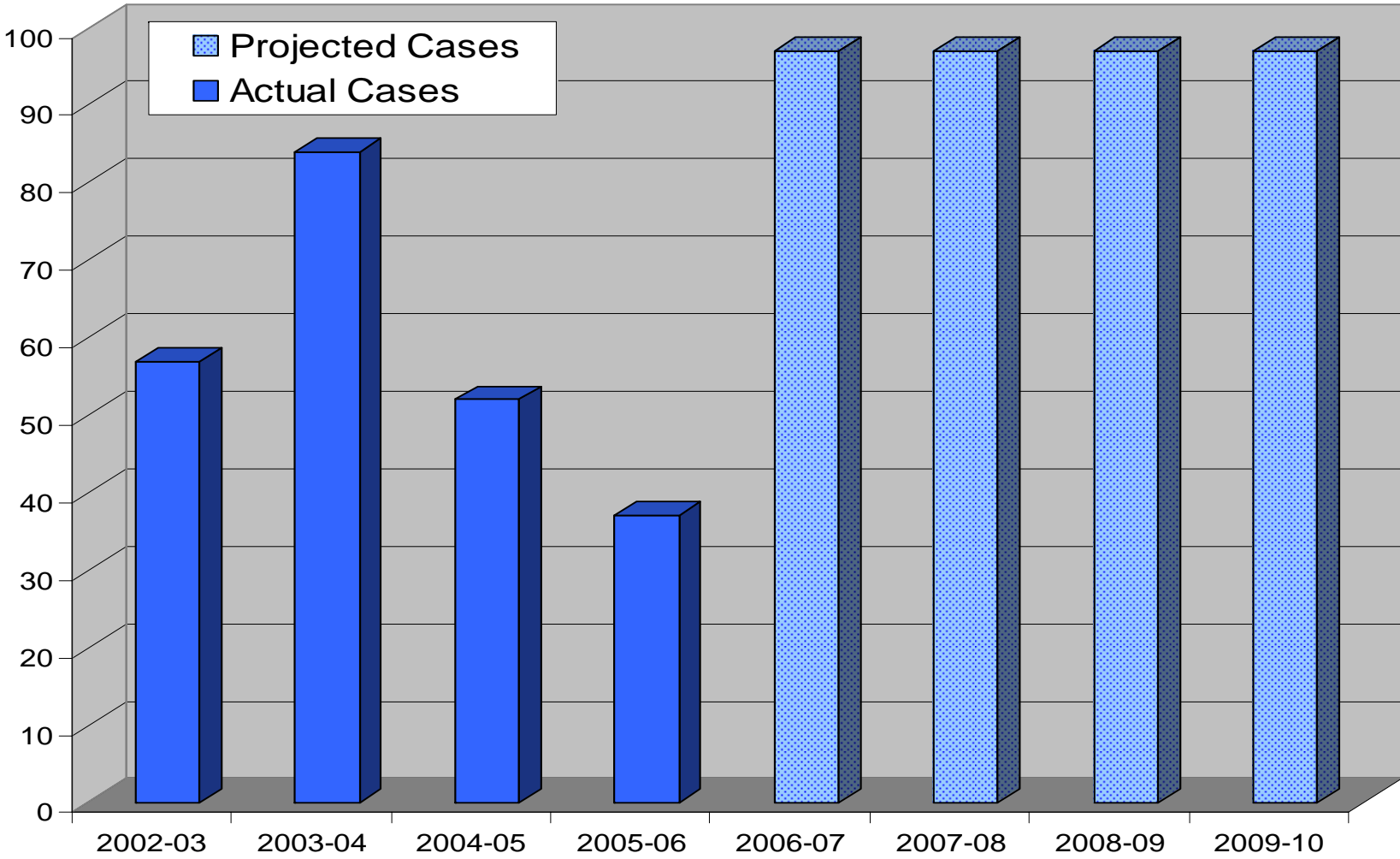
How Long It Is Taking Children to Exit Foster Care



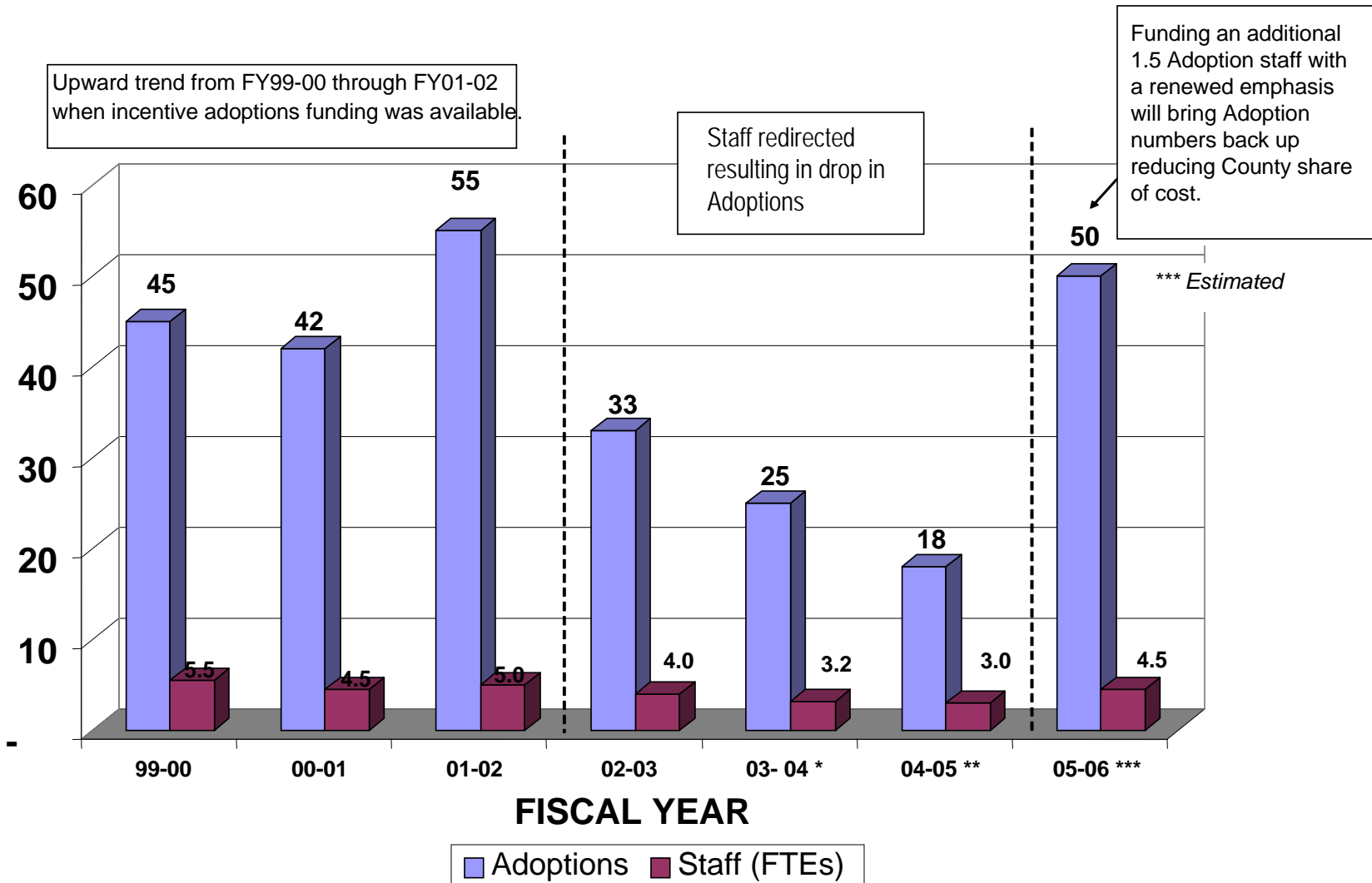


Strategies to Reduce the Number of Children in Foster Care

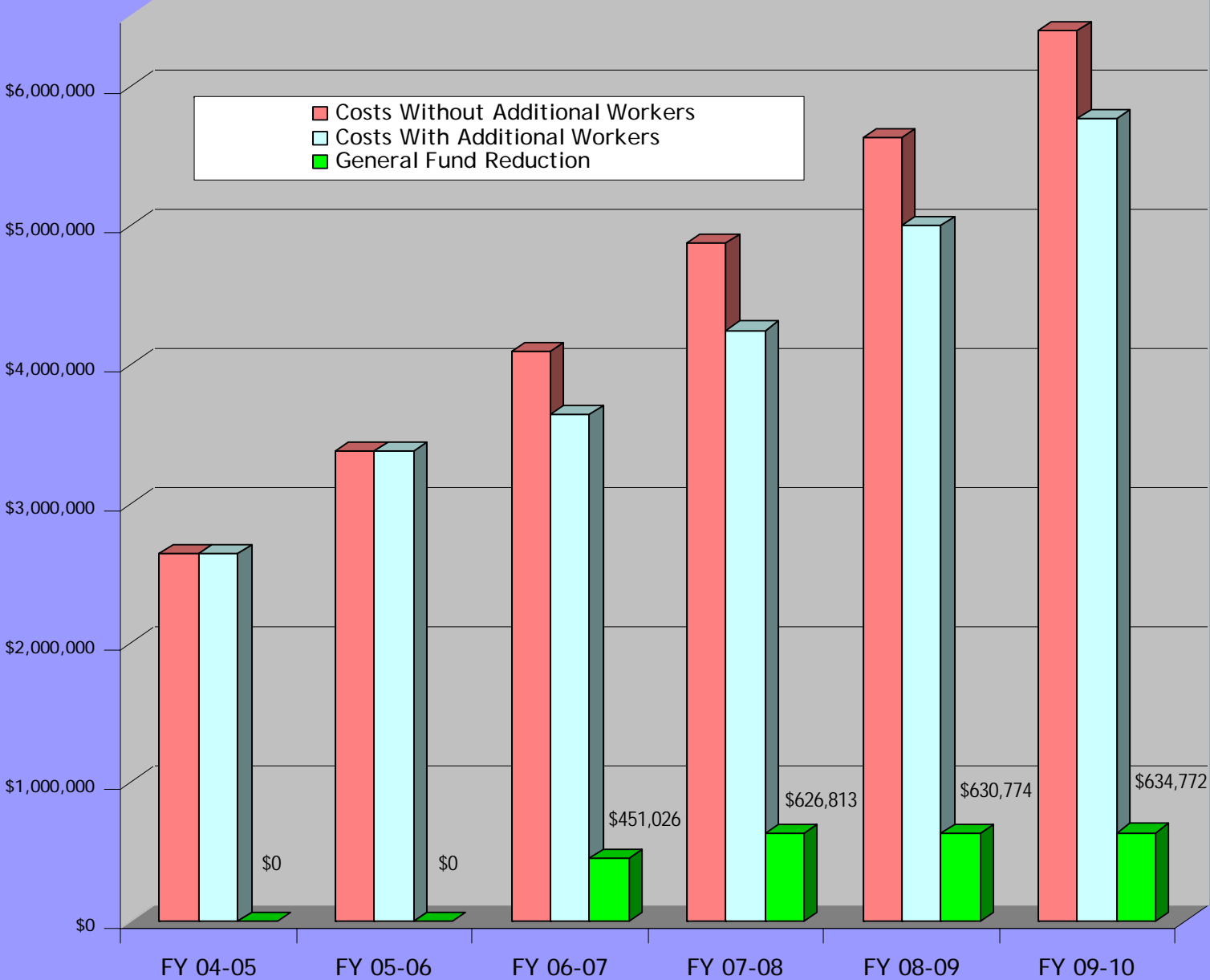
Voluntary Family Maintenance (2002-05) and Family Preservation Cases with 3 Additional Staff (2006-10)



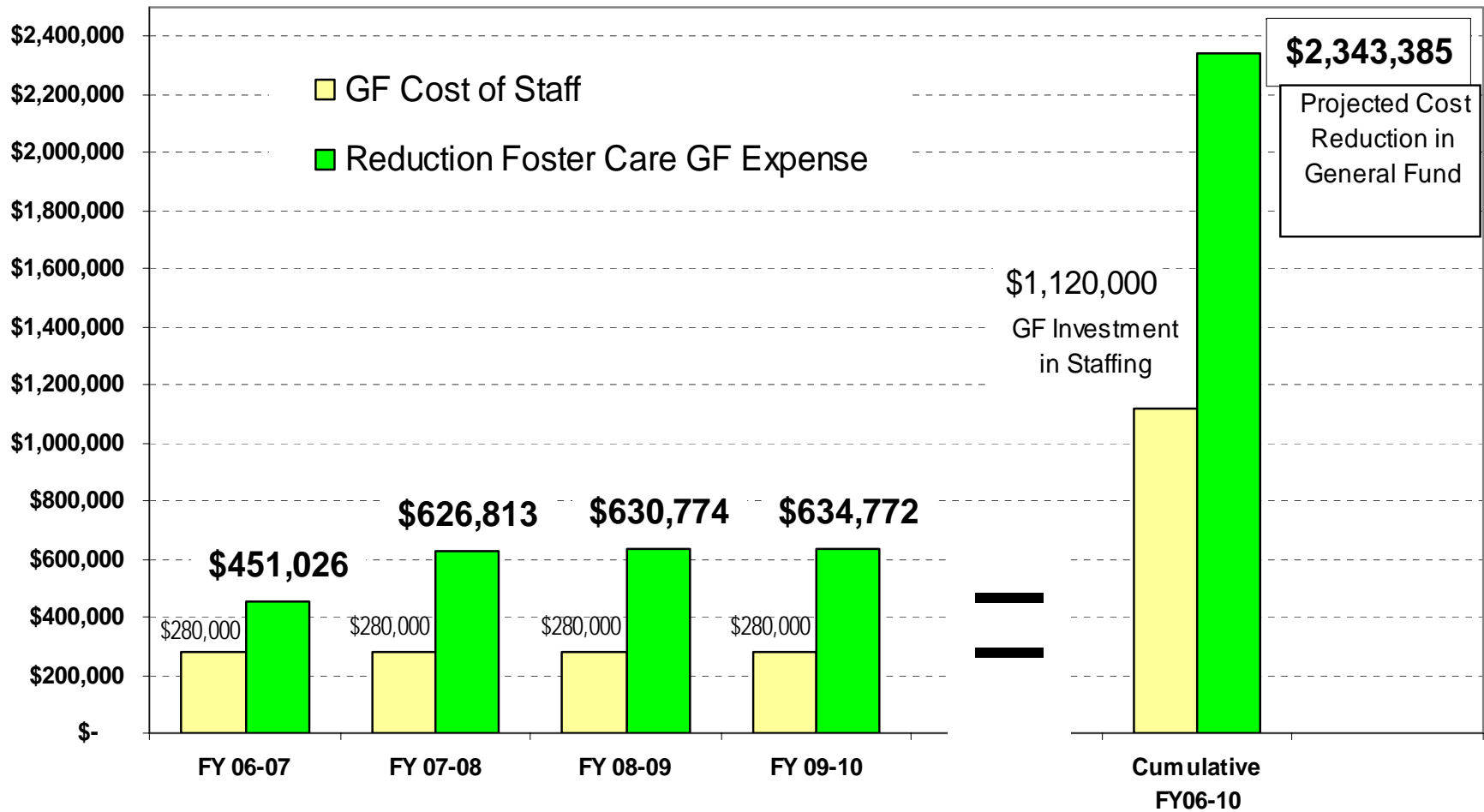
ADOPTIONS



Additional Staff for Voluntary Maintenance Cases Projected to Reduce County General Fund Dollars



Total Projected Avoided Costs of County General Fund



Avoided Net Costs of County General Fund as a result of Proposed Investment in Family Preservation Staffing

