

Ramirez, Angelica

Public Comment - Group 4

#7

From: Karen Flores <kfloo90@gmail.com>
Sent: Friday, May 13, 2022 4:58 PM
To: Hart, Gregg; Supervisor Das Williams
Cc: sbcob
Subject: Please support the SM levee trail expansion!



Caution: This email originated from a source outside of the County of Santa Barbara. Do not click links or open attachments unless you verify the sender and know the content is safe.

Hi Supervisor Hart and Supervisor Williams,

I am a resident of Santa Barbara County and I'm reaching out in support of the proposal to expand the SM levee trail to Guadalupe.

Personally, I'm really excited about this opportunity to invest in the community of Santa Maria and create more opportunities for folks to walk, bike, and run with family & friends.

Currently, Santa Maria only has access to 8 miles of trails across two options, while Santa Barbara has over 130 miles of trails across 52 options. As the biggest city in the county with majority working class BIPOC residents, Santa Maria deserves better.

At its core, this proposal is an issue of environmental justice. Too often, communities of color receive disproportionate investment resulting in less access to green spaces. Extending the trail is an opportunity to remedy this issue and double the access to trails. I strongly urge you to advocate for the health of families in Santa Maria.

Thank you,

(name and approx. address)

Thank you

Karen Flores

Ramirez, Angelica

From: Karen Flores <kfloo90@gmail.com>
Sent: Friday, May 13, 2022 4:58 PM
To: Lavagnino, Steve; sbcob
Subject: Please support SM levee trail expansion!

Caution: This email originated from a source outside of the County of Santa Barbara. Do not click links or open attachments unless you verify the sender and know the content is safe.

Hi Supervisor Lavagnino,

I am a resident of Santa Maria and I'm reaching out in support of the proposal to expand the SM levee trail to Guadalupe. Personally, I'm really excited about this opportunity for my community to enjoy the trail to bike, walk, and run with our loved ones. I'd really love to see the county invest further into North County's outdoor spaces. Right now SM really only has this trail, which pales in comparison to all the beautiful trail options in Santa Barbara.

I also love the idea of being able to access the coast and Guadalupe from Santa Maria, instead of using Route 166, which can be quite dangerous due to the traffic. And on the topic of safety, I believe the streets of Santa Maria are not friendly for pedestrians and that my community deserves investment in a safe option to move around.

I hope you will listen to our community, and urge you to advocate for our needs.

Thank you,

(name and approx. address)

Thank you

Karen Flores

Ramirez, Angelica

From: Cassidy Rea <rea.cassidy@yahoo.com>
Sent: Friday, May 13, 2022 5:10 PM
To: Hart, Gregg; Supervisor Das Williams
Cc: sbcob
Subject: Please support the SM levee trail expansion!

Caution: This email originated from a source outside of the County of Santa Barbara. Do not click links or open attachments unless you verify the sender and know the content is safe.

Hi Supervisor Hart and Supervisor Williams,

I am a resident of Santa Barbara County and I'm reaching out in support of the proposal to expand the SM levee trail to Guadalupe. I work in homeless services and work county-wide. Many of the people I work with move to or live in Santa Maria. I think this trail would be a great addition to Santa Maria and give the clients that I serve more access to outdoor spaces— spaces that exist in South County, where housing is not affordable for my clients.

Currently, Santa Maria only has access to 8 miles of trails across two options, while Santa Barbara has over 130 miles of trails across 52 options. As the biggest city in the county with majority working class BIPOC residents, Santa Maria deserves better.

At its core, this proposal is an issue of environmental justice. Too often, communities of color receive disproportionate investment resulting in less access to green spaces. Extending the trail is an opportunity to remedy this issue and double the access to trails. I strongly urge you to advocate for the health of families in Santa Maria.

Thank you,

Cassidy Rea, lower west side

Ramirez, Angelica

From: Melia Bailly <meliabailly@yahoo.com>
Sent: Friday, May 13, 2022 5:29 PM
To: Hart, Gregg; Supervisor Das Williams
Cc: sbcob
Subject: In support of the SM levee trail expansion

Caution: This email originated from a source outside of the County of Santa Barbara. Do not click links or open attachments unless you verify the sender and know the content is safe.

Hello Supervisor Hart and Supervisor Williams,

I am a resident of Santa Barbara County and I'm reaching out in support of the proposal to expand the SM levee trail to Guadalupe.

Personally, I'm really excited about this opportunity to invest in the community of Santa Maria and create more opportunities for folks to walk, bike, and run with family & friends.

Currently, Santa Maria only has access to 8 miles of trails across two options, while Santa Barbara has over 130 miles of trails across 52 options. As the biggest city in the county with majority working class BIPOC residents, Santa Maria deserves better.

At its core, this proposal is an issue of environmental justice. Too often, communities of color receive disproportionate investment resulting in less access to green spaces. Extending the trail is an opportunity to remedy this issue and double the access to trails. I strongly urge you to advocate for the health of families in Santa Maria.

Thank you,

Melia Bailly
(333 E Enos Dr. Santa Maria)

Ramirez, Angelica

From: Hernandez, Alma
Sent: Friday, May 13, 2022 5:55 PM
To: CEO Clerk of the Board
Cc: Fischer, Gina; Hartmann, Joan
Subject: Santa Maria- Guadalupe Levee Trail Extension

Hi,

We received the following letter to be included with the Board Packet for Tuesday, May 17, 2022

Thanks!

Alma.

Alma Hernandez
North County District Representative
Office of Supervisor Joan Hartmann
105 E. Anapamu Street, 4th Floor, Santa Barbara, CA 93101
C 805.699.1140 | E ahernandez@countyofsb.org

From: Tinoco, Jaime <JIT1@IBEW1245.com>
Sent: Friday, May 13, 2022 12:19 PM
To: Hartmann, Joan <jHartmann@countyofsb.org>
Cc: Hernandez, Alma <Ahernandez@countyofsb.org>; Litten, Jefferson <jlitten@countyofsb.org>
Subject: Santa Maria- Guadalupe Levee Trail Extension

Caution: This email originated from a source outside of the County of Santa Barbara. Do not click links or open attachments unless you verify the sender and know the content is safe.

Joan,
My name is Jaime Tinoco, and I'm a resident of Santa Barbara County, Union Representative of IBEW Local 1245, and a Board Member of SBCAN.

This email is to request your support for the Santa Maria- Guadalupe Levee Trail extension.

As you might already know, Santa Maria area residents cannot walk on trails in comparison to the south area of the County. The current Levee Trail has been used a lot by community members.

I also understand that the farm community is opposed to the idea because of vandalism concerns. One might want to point out that farmland is already within the City limits or next to the population area. I don't believe that we have an issue now. I see a possible bias towards our community since Santa Maria has a significant Latino and Indigenous portion of its community.

I strongly request your support since the people responsible for representing its people are only allied to the big farm community.

Ramirez, Angelica

From: Hernandez, Alma
Sent: Friday, May 13, 2022 6:12 PM
To: CEO Clerk of the Board
Cc: Hartmann, Joan; Fischer, Gina
Subject: Santa Maria Levee Trail

Hi,

We received the following letter to be included with the Board Packet for Tuesday, May 17, 2022

Thanks!

Alma.

Alma Hernandez
North County District Representative
Office of Supervisor Joan Hartmann
105 E. Anapamu Street, 4th Floor, Santa Barbara, CA 93101
C 805.699.1140 | E ahernandez@countyofsb.org

From: David Dennis <ddennis@mac.com>
Sent: Friday, May 13, 2022 10:57 AM
To: Hartmann, Joan <jHartmann@countyofsb.org>
Cc: Hernandez, Alma <Ahernandez@countyofsb.org>
Subject: Santa Maria Levee Trail

Caution: This email originated from a source outside of the County of Santa Barbara. Do not click links or open attachments unless you verify the sender and know the content is safe.

Dear County Supervisor Hartmann,

My name is David Dennis and I live at 416 E Hermosa Street in Santa Maria.

I understand that there is a fear that trail use on the proposed SM Levee Trail extension is incompatible with farming and will cause catastrophic economic harm to adjacent property.

The reality on the ground in and around Santa Maria shows that to be completely wrong. Farms and trail use can co-exist and provide much needed recreation opportunities, away from traffic, for our residents. A properly designed, regulated and monitored trail would cause no more harm than any of the current uses near existing farms in our community.

Below are five examples of farm fields within our community, co-existing with residences, pedestrians and cyclists. These fields are used season after season and remain very productive.

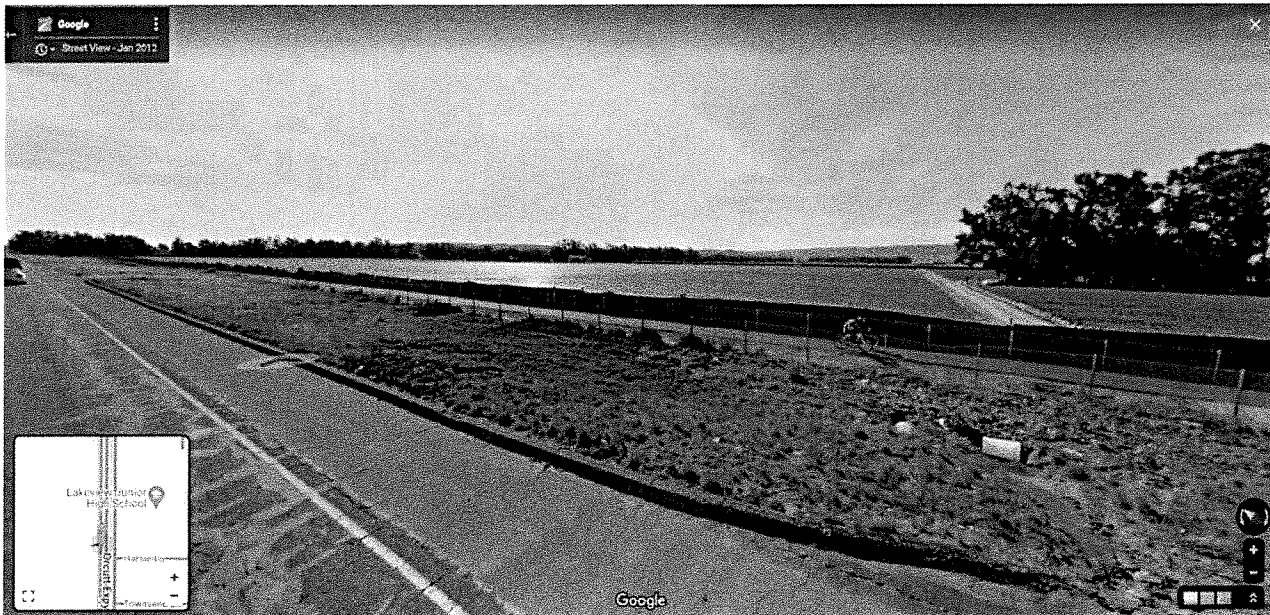
EXAMPLE 1 - The image below shows the strawberry fields surrounded by Stowell, Blosser, Battles and Depot Streets and just west of to Minami Park. They are also bordered by well used bike lanes and sidewalks and a portion of it is used for parking during the Santa Barbara County Fair.

Screen Shot looks NW from near the inspection of Battles and Depot Streets



EXAMPLE 2 - Bicyclists can be seen traveling on a Multi-Use Trail next to strawberry fields adjacent to Broadway/135 and the SM Airport.

Screen Shot looks SW



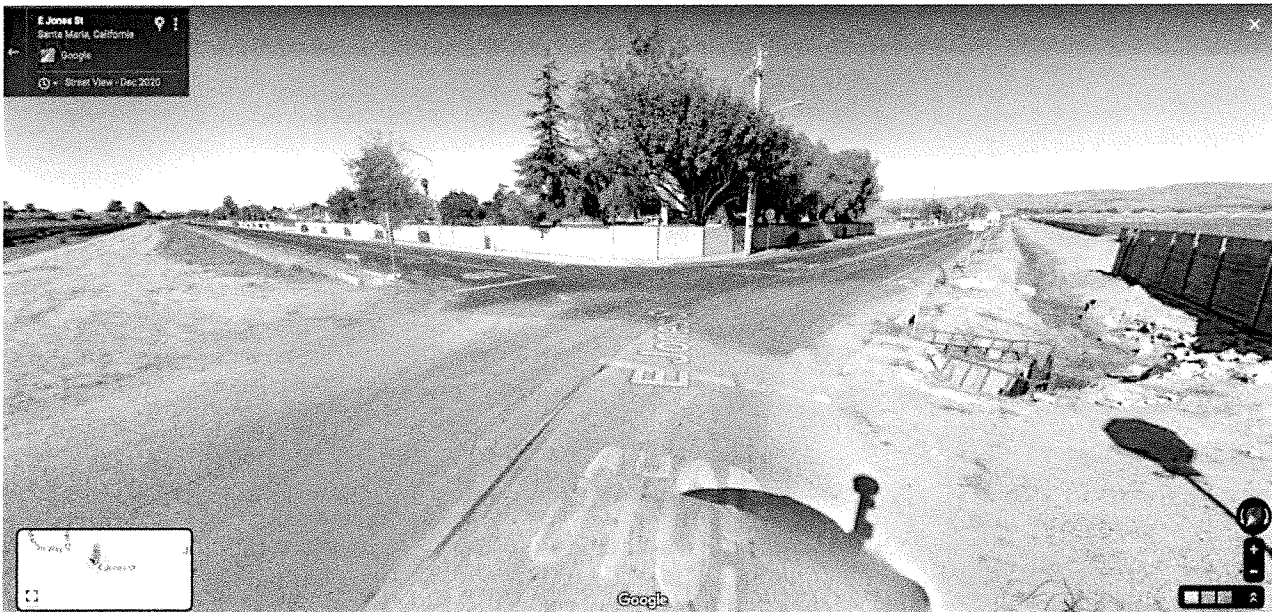
EXAMPLE 3 - Strawberry fields adjacent to North Blosser north of Fesler. Bike lanes and residential run along the entire stretch from the existing Levee Trail to Main Street including protected bike lanes on the northern portion.

Screen Shot looks SW



EXAMPLE 4 - Fields adjacent to Jones (on the left) and Suey (on the right). Bike Lanes, sidewalks and residential along both streets. Fencing here is temporary and not always in place.

Screen Shot looks NW



EXAMPLE 5 - Fields along to Panther Drive in NE Santa Maria (Pioneer Valley High School on the left, fields and residential on the right). Twice each school day, a few thousand students use these streets, bike lanes, sidewalks. The farm is not fenced.

Screen Shot looks North



I urge you to support the development of a public use levee trail connecting Santa Maria and Guadalupe.

David Dennis
416 E Hermosa St
Santa Maria, CA 93454
805-202-6708
ddennis@mac.com

Ramirez, Angelica

From: John Kleinberg <john.kleinberg@appfolio.com>
Sent: Friday, May 13, 2022 7:19 PM
To: Hart, Gregg; Supervisor Das Williams
Cc: sbcob
Subject: Please support the SM levee trail expansion!

Caution: This email originated from a source outside of the County of Santa Barbara. Do not click links or open attachments unless you verify the sender and know the content is safe.

Hi Supervisor Hart and Supervisor Williams,

I am a resident of Santa Barbara County and I'm reaching out in support of the proposal to expand the SM levee trail to Guadalupe.

Personally, I'm really excited about this opportunity to invest in the community of Santa Maria and create more opportunities for folks to walk, bike, and run with family & friends.

Currently, Santa Maria only has access to 8 miles of trails across two options, while Santa Barbara has over 130 miles of trails across 52 options. As the biggest city in the county with majority working class BIPOC residents, Santa Maria deserves better.

At its core, this proposal is an issue of environmental justice. Too often, communities of color receive disproportionate investment resulting in less access to green spaces. Extending the trail is an opportunity to remedy this issue and double the access to trails. I strongly urge you to advocate for the health of families in Santa Maria.

Thank you,

John Kleinberg
Downtown Santa Barbara

Ramirez, Angelica

From: Daisy Garcia <daisyvaleria11@icloud.com>
Sent: Friday, May 13, 2022 8:32 PM
To: Hart, Gregg; Supervisor Das Williams
Cc: sbcob
Subject: Please support the SM levee trail expansion!

Caution: This email originated from a source outside of the County of Santa Barbara. Do not click links or open attachments unless you verify the sender and know the content is safe.

Hi Supervisor Hart and Supervisor Williams,

I am a resident of Santa Barbara County and I'm reaching out in support of the proposal to expand the SM levee trail to Guadalupe.

Personally, I'm really excited about this opportunity to invest in the community of Santa Maria and create more opportunities for folks to walk, bike, and run with family & friends.

Currently, Santa Maria only has access to 8 miles of trails across two options, while Santa Barbara has over 130 miles of trails across 52 options. As the biggest city in the county with majority working class BIPOC residents, Santa Maria deserves better.

At its core, this proposal is an issue of environmental justice. Too often, communities of color receive disproportionate investment resulting in less access to green spaces. Extending the trail is an opportunity to remedy this issue and double the access to trails. I strongly urge you to advocate for the health of families in Santa Maria.

Thank you,

(name and approx. address)

Sent from my iPhone

Ramirez, Angelica

From: Katherine Schoellenbach <katherine.schoellenbach@gmail.com>
Sent: Saturday, May 14, 2022 8:25 AM
To: Lavagnino, Steve; Hart, Gregg; Supervisor Das Williams
Cc: sbcob
Subject: Support the SM River Trail Expansion

Caution: This email originated from a source outside of the County of Santa Barbara. Do not click links or open attachments unless you verify the sender and know the content is safe.

Hi Santa Barbara County Board of Supervisors,

I am a resident of Santa Barbara County as well as a registered nurse and I'm reaching out in support of the proposal to expand the SM levee trail to Guadalupe. This is not only an opportunity to invest in the community of Santa Maria and create more opportunities for folks to walk, bike, and run with family & friends, but also is a way to support the physical, emotional and mental health of Santa Maria residents. As an RN working in this community, I know that having access to outdoor spaces is essential for the good health of individuals and the larger community.

Currently, Santa Maria only has access to 8 miles of trails across two options, while Santa Barbara has over 130 miles of trails across 52 options. As the biggest city in the county with majority working class BIPOC residents, Santa Maria deserves better. At its core, this proposal is an issue of environmental justice. Too often, communities of color receive disproportionate investment resulting in less access to green spaces. This is one of many ways that systemic racism negatively affects the health of residents of Santa Barbara county. Extending the trail is an opportunity to remedy this issue and double the access to trails. I strongly urge you to advocate for the health of families in Santa Maria.

Thank you,

Katherine Schoellenbach, RN

Lompoc, CA

Ramirez, Angelica

From: Casey Rogers <caseylinternrogers@gmail.com>
Sent: Saturday, May 14, 2022 9:38 AM
To: Hart, Gregg; Supervisor Das Williams
Cc: sbcob
Subject: Please support the SM levee trail expansion!

Caution: This email originated from a source outside of the County of Santa Barbara. Do not click links or open attachments unless you verify the sender and know the content is safe.

Hi Supervisor Hart and Supervisor Williams,

I am a resident of Santa Barbara County and I'm reaching out in support of the proposal to expand the SM levee trail to Guadalupe.

Personally, I'm really excited about this opportunity to invest in the community of Santa Maria and create more opportunities for folks to walk, bike, and run with family & friends.

Currently, Santa Maria only has access to 8 miles of trails across two options, while Santa Barbara has over 130 miles of trails across 52 options. As the biggest city in the county with majority working class BIPOC residents, Santa Maria deserves better.

At its core, this proposal is an issue of environmental justice. Too often, communities of color receive disproportionate investment resulting in less access to green spaces. Extending the trail is an opportunity to remedy this issue and double the access to trails. I strongly urge you to advocate for the health of families in Santa Maria.

Thank you,

Casey Rogers
Montecito, CA

Ramirez, Angelica

From: Hartmann, Joan
Sent: Saturday, May 14, 2022 10:32 AM
To: sbcob
Subject: Fw: SM Bike Lanes, Trails and Pedestrian use near Farm land

----- Forwarded message -----

From: David Dennis <ddennis@mac.com>
Date: Thu, May 12, 2022 at 6:36 PM
Subject: SM Bike Lanes, Trails and Pedestrian use near Farm land
To: Jeanne Sparks <jeanne.sparks@icloud.com>, Ken Hough <ken@sbcac.org>, <nadiasbcac@gmail.com>, Rebeca <rebeca@causenow.org>

Examples of Farm Fields co-existing with pedestrians and cyclists.

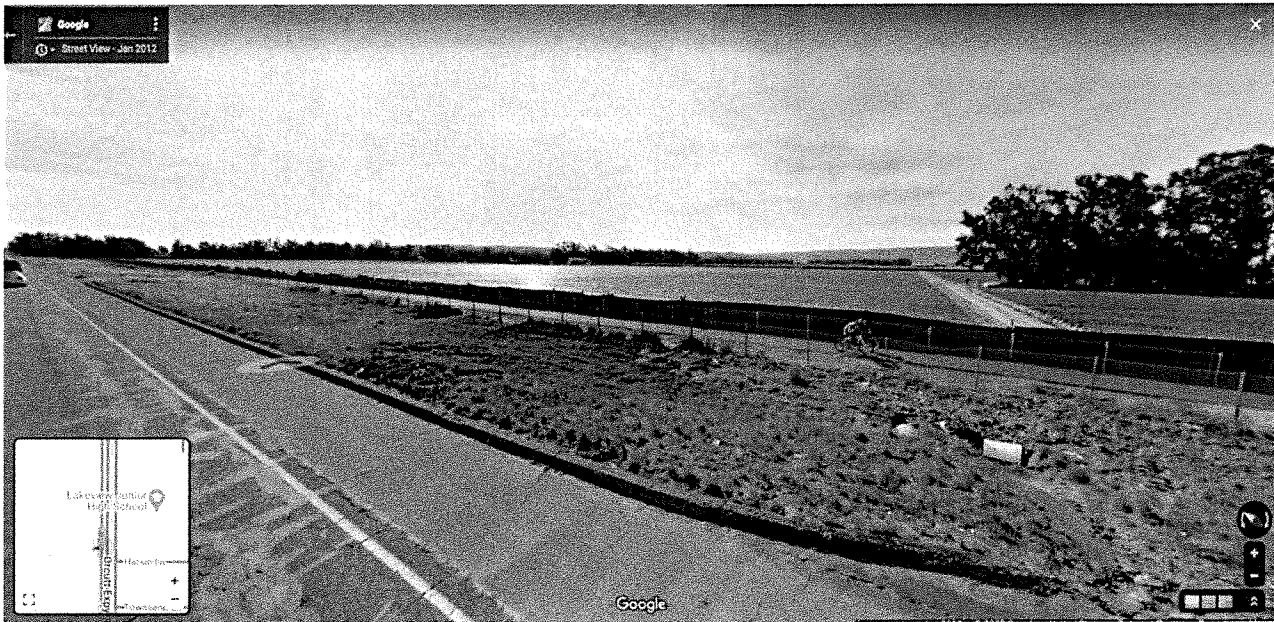
Strawberry fields surrounded by Bike Lanes and sidewalks - Stowell, Blosser, Battles and Depot (adjacent to Minami Park)

Screen Shot looks NW



Bicyclists travel on a Multi-Use Trail next to strawberry fields adjacent to Broadway/135.

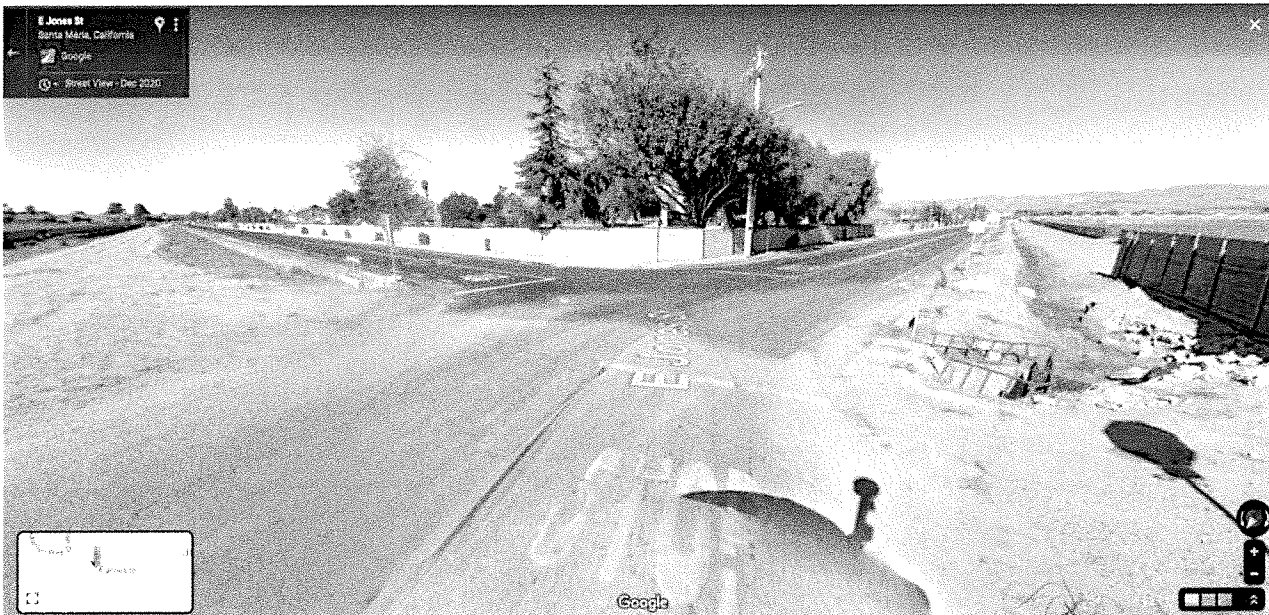
Screen Shot looks SW



Strawberry fields adjacent to North Blosser north of Fesler. Bike Lanes and residential along the entire stretch from the existing Levee Trail to Main including Protected Bike Lanes on the northern section. Screen Shot looks SW



Fields adjacent to Jones (on the left) and Suey (on the right). Bike Lanes, sidewalks and residential along both streets. Fencing is temporary and not always in place. Screen Shot looks NW



Fields along to Panther Drive in NE Santa Maria (Pioneer Valley High School on the left, fields and residential on the right). A few thousands students, twice each school day, use these streets, bike lanes, sidewalks.

Screen Shot looks N



David Dennis
416 E Hermosa St
Santa Maria, CA 93454
805-202-6708
ddennis@mac.com

--

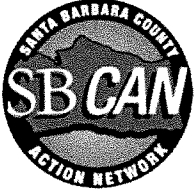
Nadia Lee Abushanab (she/her)

Advocacy and Events Director

SBCAN

nadia@sbcn.org

508-740-8504



Ramirez, Angelica

From: Hartmann, Joan
Sent: Saturday, May 14, 2022 10:33 AM
To: sbcob
Subject: Fw: Help Guadalupe!

From: Brandon Delgado Lopez <j1987@gusdk8.com>
Sent: Friday, May 13, 2022 2:21 PM
To: CEO Clerk of the Board <CEOClerkoftheBoard@countyofsb.org>
Cc: Hartmann, Joan <jHartmann@countyofsb.org>; Supervisor Das Williams <SupervisorWilliams@countyofsb.org>; Hart, Gregg <gHart@countyofsb.org>; Lavagnino, Steve <slavagnino@countyofsb.org>; Nelson, Bob <bnelson@countyofsb.org>
Subject: Help Guadalupe!

Caution: This email originated from a source outside of the County of Santa Barbara. Do not click links or open attachments unless you verify the sender and know the content is safe.

Hi Santa Barbara County Board of Supervisors,

I am a resident of Guadalupe and I'm reaching out in support of the proposal to expand the SM levee trail to Guadalupe. I'm really excited about this opportunity to invest in the community of Santa Maria and Guadalupe and create more opportunities for people to walk, bike, and run with family & friends. I am 11 years old and attend McKenzie Jr High.

Currently, Santa Maria only has access to 8 miles of trails across two options, Guadalupe has 0 miles of trails, while Santa Barbara has over 130 miles of trails across 52 options. At its core, this proposal is an issue of environmental justice. Too often, communities of color receive disproportionate investment resulting in less access to green spaces. Extending the trail is an opportunity to remedy this issue and double the access to trails. I strongly urge you to advocate for the health of families in Santa Maria and Guadalupe. Our children deserve access to walk, run and bike.

Thank you,

Brandon

Kermit Mckenzie Intermediate School
4710 West Main Street
Guadalupe, CA 93434

Ramirez, Angelica

From: Daniel Chacon <chacondaniel217@gmail.com>
Sent: Saturday, May 14, 2022 12:23 PM
To: Lavagnino, Steve; Hart, Gregg; Supervisor Das Williams; sbcob
Subject: SM Levee Trail

Caution: This email originated from a source outside of the County of Santa Barbara. Do not click links or open attachments unless you verify the sender and know the content is safe.

Dear County Supervisors,

My name is Daniel Chacon and I live in Santa Maria.

I am writing to urge your support for the development of a public use levee trail extension from Santa Maria to Guadalupe.

Santa Maria needs more open space as there is a disproportionate investment in open space across our county. Residents in Santa Maria only have access to eight miles of trails over two options, while Santa Barbara residents can access over 130 miles of trails and 52 options. Sadly, only 17% of county open space located in the Santa Maria valley. 47% of Santa Maria residents live in areas with less than 3 acres of parks or open space per 1,000 residents. This project would double the miles of access to trails in Santa Maria.

There is fear that trail use on the proposed SM Levee Trail extension is incompatible with farming and will cause catastrophic economic harm to adjacent property. The reality on the ground in and around Santa Maria shows that to be completely wrong. Farms and trail use can co-exist and the levee trail can provide much needed recreation opportunities, away from dangerous vehicle traffic. A properly designed and monitored trail would cause no more harm than any of the current streets, bike lanes, pathways and sidewalks that are next to existing farms in our community.

I urge you to support the development of a public use levee trail connecting Santa Maria and Guadalupe.

Thank you,

Daniel Chacon

211 Lolita Ln

Ramirez, Angelica

From: Kristina L Calahane <kreklc@icloud.com>
Sent: Saturday, May 14, 2022 2:37 PM
To: Hart, Gregg; Supervisor Das Williams
Cc: sbcob
Subject: Please support the SM levee trail expansion!

Caution: This email originated from a source outside of the County of Santa Barbara. Do not click links or open attachments unless you verify the sender and know the content is safe.

Hi Supervisor Hart and Supervisor Williams,

I am a resident of Santa Barbara County and I'm reaching out in support of the proposal to expand the SM levee trail to Guadalupe.

Personally, I'm really excited about this opportunity to invest in the community of Santa Maria and create more opportunities for folks to walk, bike, and run with family & friends.

Currently, Santa Maria only has access to 8 miles of trails across two options, while Santa Barbara has over 130 miles of trails across 52 options. As the biggest city in the county with majority working class BIPOC residents, Santa Maria deserves better.

At its core, this proposal is an issue of environmental justice. Too often, communities of color receive disproportionate investment resulting in less access to green spaces. Extending the trail is an opportunity to remedy this issue and double the access to trails. I strongly urge you to advocate for the health of families in Santa Maria.

Thank you,

(name and approx. address)

Kristina Calahane
4774 Cherry Ave.
Orcutt, 93455

Ramirez, Angelica

From: Kristina L Calahane <kreklc@icloud.com>
Sent: Saturday, May 14, 2022 2:37 PM
To: Lavagnino, Steve; sbcob
Subject: Please support SM levee trail expansion!

Caution: This email originated from a source outside of the County of Santa Barbara. Do not click links or open attachments unless you verify the sender and know the content is safe.

Hi Supervisor Lavagnino,

I am a resident of Santa Maria and I'm reaching out in support of the proposal to expand the SM levee trail to Guadalupe. Personally, I'm really excited about this opportunity for my community to enjoy the trail to bike, walk, and run with our loved ones. I'd really love to see the county invest further into North County's outdoor spaces. Right now SM really only has this trail, which pales in comparison to all the beautiful trail options in Santa Barbara.

I also love the idea of being able to access the coast and Guadalupe from Santa Maria, instead of using Route 166, which can be quite dangerous due to the traffic. And on the topic of safety, I believe the streets of Santa Maria are not friendly for pedestrians and that my community deserves investment in a safe option to move around.

I hope you will listen to our community, and urge you to advocate for our needs.

Thank you,

(name and approx. address)

Kristina Calahane
4774 Cherry Ave.
Orcutt, 93455

Ramirez, Angelica

From: Ashley <ashleyashmore@comcast.net>
Sent: Saturday, May 14, 2022 3:35 PM
To: sbcob
Subject: Santa Maria Levee Trail

Caution: This email originated from a source outside of the County of Santa Barbara. Do not click links or open attachments unless you verify the sender and know the content is safe.

Good afternoon,

Thank you for taking time to read my email, and if you would please 'read into the record' my comments.

Santa Maria, like many cities have underlying problems with gangs, homelessness, and limited budgets.

So, a new trail for a select few seems frivolous, however, history teaches us otherwise. The greater the opportunity for families to spend time together, the greater the positive results for communities. Santa Barbara city and San Luis Obispo city are examples of how providing pedestrian options have increase business profits.

A 2009 study showed that cities who invested in walkways and trail ways attracted more tourism that in turn created jobs thereby increasing city budgets!!

The Levee is one of the few places where pedestrians can go and not worry about drivers who either don't care or are too distracted to keep us safe.

MONEY: Always the bottom line. Let's consider the facts: If a resident takes a bus ride, it may cost them \$1.50, but it costs the city \$2 or more in bus operation. If a resident decides to drive, it costs the city an average of \$9 bucks in services, like police etc. When a resident walks for rides a bike, the cost to the city is negligible.

Expansion of the Levee is a step toward encouraging ALL residence of Santa Maria to 'go outside', enjoy our mild (but windy) weather. Bond with family and friends. Reminding us once again, how important these things are!

One of the many things the Covid 19 pandemic reminded us of is the importance of family, friends and the opportunity to be OUTSIDE and TOGETHER.

That being said, I urge you to support the development of a public use levee trail connecting Santa Maria and Guadalupe.

While the current cost may seem expensive, what our community will gain is priceless.

Thank you in advance for caring about our town and our future together.

Ashley Ashmore

Proud resident of Santa Maria

Avid cyclist and walker 😊

Ramirez, Angelica

From: susan shields <shields3033@netscape.net>
Sent: Saturday, May 14, 2022 3:50 PM
To: sbcob
Subject: Please read this comment into the record

Caution: This email originated from a source outside of the County of Santa Barbara. Do not click links or open attachments unless you verify the sender and know the content is safe.

Dear County of Santa Barbara Board of Supervisors,

I heartily support the proposed and long delayed extension of the Santa Maria River Trail. Hiking trails are an invaluable resource for the community in terms of exercise, recreation and mental health. Families with children especially benefit. I see no reason to deny funding for this trail extension and I hope you will support it.

Susan Shields

3033 Calle Rosales, SB. 93105

Ramirez, Angelica

From: Daniela Soleri <soleri@ucsb.edu>
Sent: Saturday, May 14, 2022 4:01 PM
To: Lavagnino, Steve; sbcob
Subject: Please support SM levee trail expansion!

Caution: This email originated from a source outside of the County of Santa Barbara. Do not click links or open attachments unless you verify the sender and know the content is safe.

Hi Supervisor Lavagnino,

I am a resident of Santa Maria and I'm reaching out in support of the proposal to expand the SM levee trail to Guadalupe. Personally, I'm really excited about this opportunity for my community to enjoy the trail to bike, walk, and run with our loved ones. I'd really love to see the county invest further into North County's outdoor spaces. Right now SM really only has this trail, which pales in comparison to all the beautiful trail options in Santa Barbara.

I also love the idea of being able to access the coast and Guadalupe from Santa Maria, instead of using Route 166, which can be quite dangerous due to the traffic. And on the topic of safety, I believe the streets of Santa Maria are not friendly for pedestrians and that my community deserves investment in a safe option to move around.

I hope you will listen to our community, and urge you to advocate for our needs.

Thank you,

--
.....

Daniela Soleri, PhD
she | her | ella
Research Scientist
Geography Department
UC Santa Barbara
[https://urldefense.com/v3/__http://geog.ucsb.edu/*soleri/__;fg!!fs0MJmijOm0!rjQx-kllnPyz5_qeaejGQiUbAnlbPdmg_EKKyvmmHAgNk-ysC6lt6c4iOZiJz-a03SXsyQdID8XFgSU3bMg\\$](https://urldefense.com/v3/__http://geog.ucsb.edu/*soleri/__;fg!!fs0MJmijOm0!rjQx-kllnPyz5_qeaejGQiUbAnlbPdmg_EKKyvmmHAgNk-ysC6lt6c4iOZiJz-a03SXsyQdID8XFgSU3bMg$)

Book - FOOD GARDENS FOR A CHANGING WORLD:
Growing food for healthy people, communities and ecosystems Soleri, Cleveland and Smith
2019 CAB International
[https://urldefense.com/v3/__http://geog.ucsb.edu/*soleri/FGCW_webpage.htm__;fg!!fs0MJmijOm0!rjQx-kllnPyz5_qeaejGQiUbAnlbPdmg_EKKyvmmHAgNk-ysC6lt6c4iOZiJz-a03SXsyQdID8XEVxuYS_g\\$](https://urldefense.com/v3/__http://geog.ucsb.edu/*soleri/FGCW_webpage.htm__;fg!!fs0MJmijOm0!rjQx-kllnPyz5_qeaejGQiUbAnlbPdmg_EKKyvmmHAgNk-ysC6lt6c4iOZiJz-a03SXsyQdID8XEVxuYS_g$)
.....

Steps for justice in California
California Truth and Healing Council correcting the historical record with truth about the state's treatment of Native Californians <[1](https://urldefense.com/v3/__https://tribalaffairs.ca.gov/cthc/__;!!fs0MJmijOm0!rjQx-kllnPyz5_qeaejGQiUbAnlbPdmg_EKKyvmmHAgNk-ysC6lt6c4iOZiJz-a03SXsyQdID8XGp4TyfJQ$ >></p></div>
<div data-bbox=)

In 2020, CA Assembly Bill 3121 established a Task Force to Study and Develop Reparations for California's descendants of enslaved Africans; the Task Force is deliberating the details of those reparations at a series of meetings in 2022 [https://urldefense.com/v3/__https://oag.ca.gov/ab3121/meetings__;!!fs0MJmijOm0!rjQx-klInPyz5_qaejGQiUbAnlbPdmg_EKKyvmHAgnK-ysC6It6c4iOZiJz-a03SXsyQdID8XGILHVcyA\\$](https://urldefense.com/v3/__https://oag.ca.gov/ab3121/meetings__;!!fs0MJmijOm0!rjQx-klInPyz5_qaejGQiUbAnlbPdmg_EKKyvmHAgnK-ysC6It6c4iOZiJz-a03SXsyQdID8XGILHVcyA$)

Ramirez, Angelica

From: Daniela Soleri <soleri@ucsb.edu>
Sent: Saturday, May 14, 2022 4:02 PM
To: Hart, Gregg; Supervisor Das Williams
Cc: sbcob
Subject: Please support the SM levee trail expansion!

Caution: This email originated from a source outside of the County of Santa Barbara. Do not click links or open attachments unless you verify the sender and know the content is safe.

Hi Supervisor Hart and Supervisor Williams,

I am a resident of Santa Barbara County and I'm reaching out in support of the proposal to expand the SM levee trail to Guadalupe.

Personally, I'm really excited about this opportunity to invest in the community of Santa Maria and create more opportunities for folks to walk, bike, and run with family & friends.

Currently, Santa Maria only has access to 8 miles of trails across two options, while Santa Barbara has over 130 miles of trails across 52 options. As the biggest city in the county with majority working class BIPOC residents, Santa Maria deserves better.

At its core, this proposal is an issue of environmental justice. Too often, communities of color receive disproportionate investment resulting in less access to green spaces. Extending the trail is an opportunity to remedy this issue and double the access to trails. I strongly urge you to advocate for the health of families in Santa Maria.

Thank you,

--
.....

Daniela Soleri, PhD
she | her | ella
Research Scientist
Geography Department
UC Santa Barbara
[https://urldefense.com/v3/__http://geog.ucsb.edu/*soleri/__;fg!!fs0MJmijOm0!tvhmIPSwKlyyAIG2iDJJ97IVC8fF3Pn3K9MHvdk3jBolzQ4dKCivqAV7uWcXOGdnikDeZm3KelynH3M9Hg\\$](https://urldefense.com/v3/__http://geog.ucsb.edu/*soleri/__;fg!!fs0MJmijOm0!tvhmIPSwKlyyAIG2iDJJ97IVC8fF3Pn3K9MHvdk3jBolzQ4dKCivqAV7uWcXOGdnikDeZm3KelynH3M9Hg$)

Book - FOOD GARDENS FOR A CHANGING WORLD:
Growing food for healthy people, communities and ecosystems Soleri, Cleveland and Smith
2019 CAB International
[https://urldefense.com/v3/__http://geog.ucsb.edu/*soleri/FGCW_webpage.htm__;fg!!fs0MJmijOm0!tvhmIPSwKlyyAIG2iDJJ97IVC8fF3Pn3K9MHvdk3jBolzQ4dKCivqAV7uWcXOGdnikDeZm3KelwT4xIJ1Q\\$](https://urldefense.com/v3/__http://geog.ucsb.edu/*soleri/FGCW_webpage.htm__;fg!!fs0MJmijOm0!tvhmIPSwKlyyAIG2iDJJ97IVC8fF3Pn3K9MHvdk3jBolzQ4dKCivqAV7uWcXOGdnikDeZm3KelwT4xIJ1Q$)
.....

Steps for justice in California
California Truth and Healing Council correcting the historical record with truth about the state's treatment of Native Californians

<[https://urldefense.com/v3/__https://tribalaffairs.ca.gov/cthc/__;!!fs0MJmijOm0!tvhmIPSwKlyyAIG2iDJJ97IVC8fF3Pn3K9MHvdk3jBolzQ4dKCiVqAV7uWcXOGdnikDeZm3KelzNmKmvIQ\\$](https://urldefense.com/v3/__https://tribalaffairs.ca.gov/cthc/__;!!fs0MJmijOm0!tvhmIPSwKlyyAIG2iDJJ97IVC8fF3Pn3K9MHvdk3jBolzQ4dKCiVqAV7uWcXOGdnikDeZm3KelzNmKmvIQ$) >

In 2020, CA Assembly Bill 3121 established a Task Force to Study and Develop Reparations for California's descendants of enslaved Africans; the Task Force is deliberatiing the details of those reparations at a series of meetings in 2022

[https://urldefense.com/v3/__https://oag.ca.gov/ab3121/meetings__;!!fs0MJmijOm0!tvhmIPSwKlyyAIG2iDJJ97IVC8fF3Pn3K9MHvdk3jBolzQ4dKCiVqAV7uWcXOGdnikDeZm3KelyFF3Kd6Q\\$](https://urldefense.com/v3/__https://oag.ca.gov/ab3121/meetings__;!!fs0MJmijOm0!tvhmIPSwKlyyAIG2iDJJ97IVC8fF3Pn3K9MHvdk3jBolzQ4dKCiVqAV7uWcXOGdnikDeZm3KelyFF3Kd6Q$)

Ramirez, Angelica

From: staci@yogadance.us
Sent: Saturday, May 14, 2022 4:06 PM
To: sbcob
Subject: Levee Trail

Caution: This email originated from a source outside of the County of Santa Barbara. Do not click links or open attachments unless you verify the sender and know the content is safe.

Dear County Supervisor,

My name is Staci Curry. I live and work in Santa Maria. I have been excited about the proposed levee trail since I heard about it months ago. My husband currently runs on the levee trail near 101 daily. An expansion would be exciting for our whole family as we bike, walk, and run on existing trails regularly.

I am writing to urge your support for the development of a public use levee trail extension from Santa Maria to Guadalupe.

Santa Maria needs more open space as there is a disproportionate investment in open space across our county. Residents in Santa Maria only have access to eight miles of trails over two options, while Santa Barbara residents can access over 130 miles of trails and 52 options. Sadly, only 17% of county open space located in the Santa Maria valley. 47% of Santa Maria residents live in areas with less than 3 acres of parks or open space per 1,000 residents. This project would double the miles of access to trails in Santa Maria.

There is fear that trail use on the proposed SM Levee Trail extension is incompatible with farming and will cause catastrophic economic harm to adjacent property. The reality on the ground in and around Santa Maria shows that to be completely wrong. Farms and trail use can co-exist and the levee trail can provide much needed recreation opportunities, away from dangerous vehicle traffic. A properly designed and monitored trail would cause no more harm than any of the current streets, bike lanes, pathways and sidewalks that are next to existing farms in our community.

I urge you to support the development of a public use levee trail connecting Santa Maria and Guadalupe.

Thank you,

Staci Curry, 924 E Hermosa Street, Santa Maria

Ramirez, Angelica

From: Dave Bourgeois <stdaveb@gmail.com>
Sent: Saturday, May 14, 2022 5:14 PM
To: Hart, Gregg; Supervisor Das Williams
Cc: sbcob
Subject: Please support the SM levee trail expansion!

Caution: This email originated from a source outside of the County of Santa Barbara. Do not click links or open attachments unless you verify the sender and know the content is safe.

Hi Supervisor Hart and Supervisor Williams,

I am a resident of Santa Barbara County and I'm reaching out in support of the proposal to expand the SM levee trail to Guadalupe.

Personally, I'm really excited about this opportunity to invest in the community of Santa Maria and create more opportunities for folks to walk, bike, and run with family & friends.

Currently, Santa Maria only has access to 8 miles of trails across two options, while Santa Barbara has over 130 miles of trails across 52 options. As the biggest city in the county with majority working class BIPOC residents, Santa Maria deserves better.

At its core, this proposal is an issue of environmental justice. Too often, communities of color receive disproportionate investment resulting in less access to green spaces. Extending the trail is an opportunity to remedy this issue and double the access to trails. I strongly urge you to advocate for the health of families in Santa Maria.

Thank you,
David Bourgeois
Santa Barbara, CA

Ramirez, Angelica

From: Dave Bourgeois <stdaveb@gmail.com>
Sent: Saturday, May 14, 2022 5:15 PM
To: Lavagnino, Steve; sbcob
Subject: Please support SM levee trail expansion!

Caution: This email originated from a source outside of the County of Santa Barbara. Do not click links or open attachments unless you verify the sender and know the content is safe.

Hi Supervisor Lavagnino,

I am a resident of Santa Maria and I'm reaching out in support of the proposal to expand the SM levee trail to Guadalupe. Personally, I'm really excited about this opportunity for my community to enjoy the trail to bike, walk, and run with our loved ones. I'd really love to see the county invest further into North County's outdoor spaces. Right now SM really only has this trail, which pales in comparison to all the beautiful trail options in Santa Barbara.

I also love the idea of being able to access the coast and Guadalupe from Santa Maria, instead of using Route 166, which can be quite dangerous due to the traffic. And on the topic of safety, I believe the streets of Santa Maria are not friendly for pedestrians and that my community deserves investment in a safe option to move around.

I hope you will listen to our community, and urge you to advocate for our needs.

Thank you,
David Bourgeois
Santa Barbara, CA

Ramirez, Angelica

From: Leslie McGorman <leslie.mcgorman@gmail.com>
Sent: Saturday, May 14, 2022 7:32 PM
To: sbcob
Subject: Letter in Support of Levee Trail
Attachments: Support for Levee Trail.5.14.22.docx

Caution: This email originated from a source outside of the County of Santa Barbara. Do not click links or open attachments unless you verify the sender and know the content is safe.

Hello, Please find my attached comments in support of the levee trail expansion - Item 7, as scheduled for discussion at the Tuesday, May 17 meeting.

Thank you.

May 14, 2022

Santa Barbara County Board of Supervisors,

RE: Santa Maria River Levee Trail Study

I am writing to urge your support for the development of a public use levee trail extension from Santa Maria to Guadalupe.

As a resident of Santa Maria and a frequent user of the outdoor spaces throughout the city and county, I thought it imperative that you hear from a community member who supports this initiative. It is an incredible shame that a project that would provide an immediate benefit to the communities of Santa Maria and Guadalupe would encounter any opposition, let alone such forceful opposition from corporate interests. But such is life in Santa Maria where a trade group with a private membership list can hire a Sacramento law firm to squash a publicly supported project.

You already have the data that shows the extreme difference in the number and length of trails in Santa Barbara versus Santa Maria. And it is common knowledge among the Supervisors that local tourism is concentrated in the South. Help Santa Maria close that gap and help us improve our collective quality of life by allowing this project to move forward. Santa Maria has long been the joke of the county and we are easily cast aside when it comes to projects that resemble forward progress. But this is your chance to help us overcome that history...a history that always places agricultural corporations' greed over the people who live here.

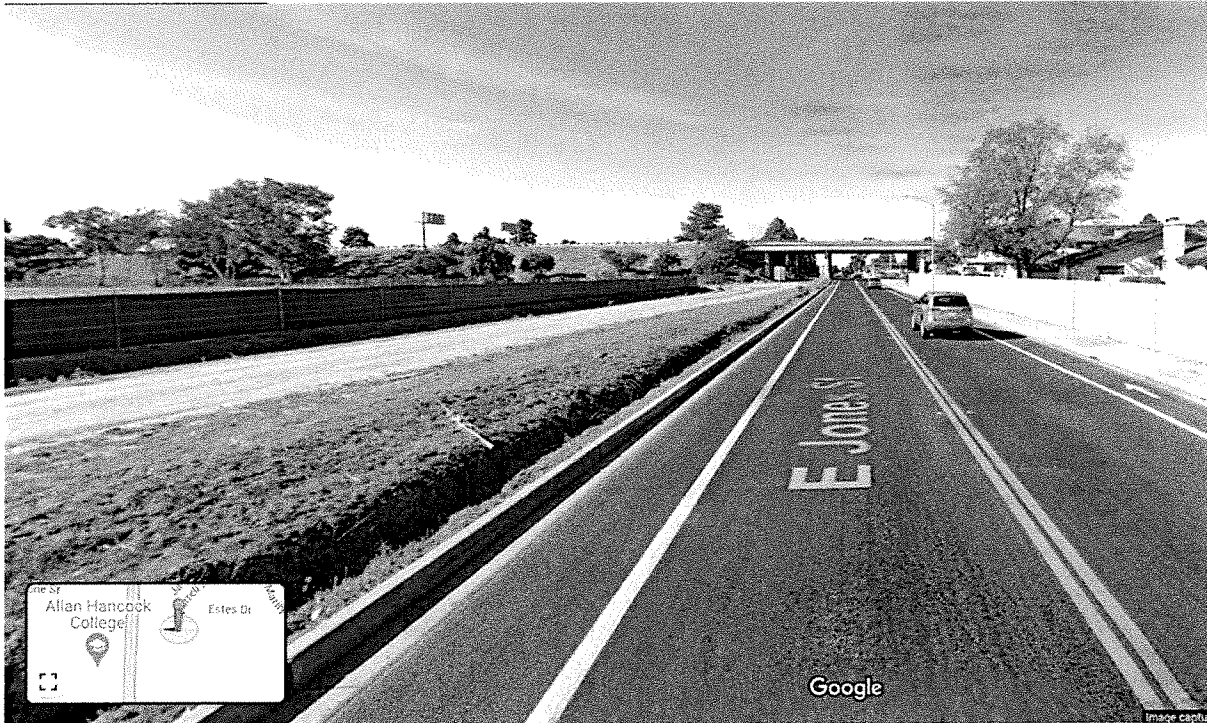
It is difficult and unsafe to travel between Santa Maria and Guadalupe - help us fix it by giving us an alternative to driving west on Main St. (And for any brave souls, please ride your bike from Santa Maria to Guadalupe and let me know how it goes.) Give us more options to get outside and live healthy lives. People in this community work incredibly hard to make many agricultural interests very rich. Instead of being rewarded with basic quality of life enhancements, those interests hide behind a Sacramento law firm with absurd anecdotes about a person going around a metal gate or a dog off-leash. (As an aside, Santa Barbara and San Luis Obispo counties have dog beaches where canine feces is MUCH more concentrated than would ever occur in this made-up scenario - yet somehow the public avoids widespread Cryptosporidium infection.) So, let's dispense with these hyperbolic criticisms of a plan that is somehow not developed enough, yet too restrictive for growers.

Let's call this what it is: a choice between the community's quality of life or acquiescing to corporate interests.

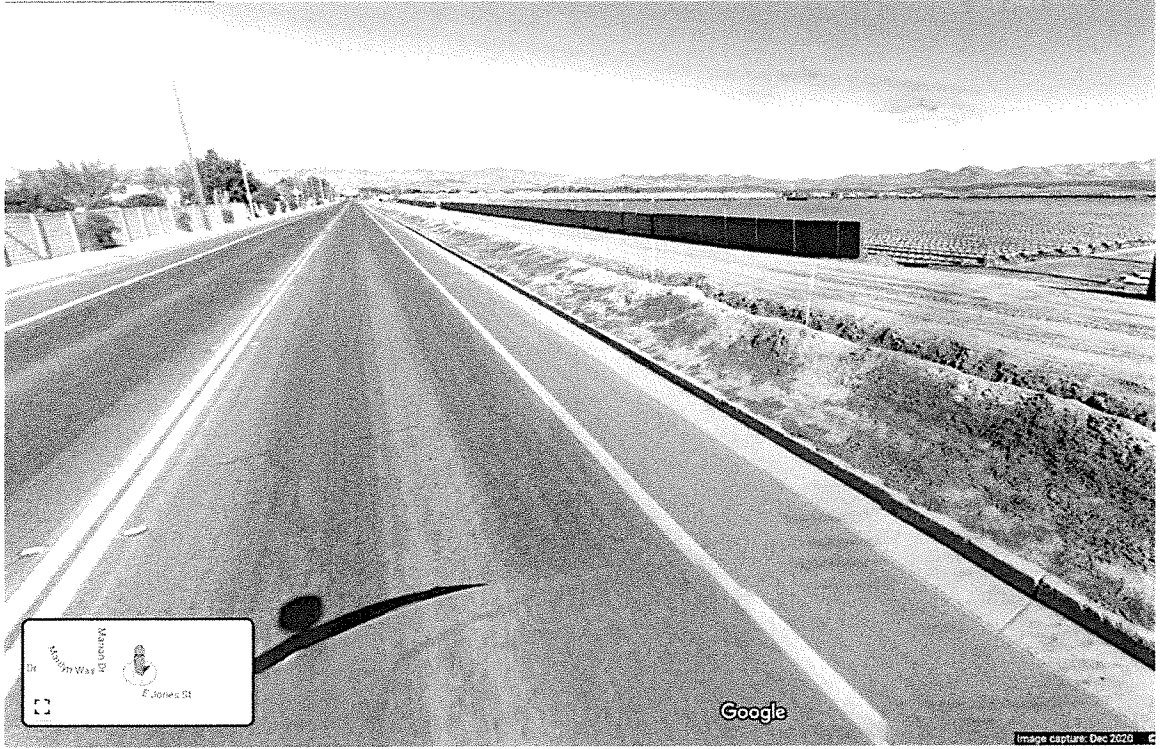
To further illustrate that Santa Maria already exists with oodles of farmland embedded in the community, I've provided a few examples (just from my neighborhood) of existing farmland that is adjacent to public life and/or integrated within the city - and has remained profitable and without incident:

1. East Jones St between the 101 and South Suey Rd:

- a. North side of the farmland is fenced but already utilized by residents as a walking path - and by workers for parking during the few months there are workers present. It is my understanding the City has already agreed to develop this into a paved/designed walking path.
- b. On the west side of the farmland, there is no fence but there is a homeless encampment. Strawberries are still planted and harvested as recently as last week.



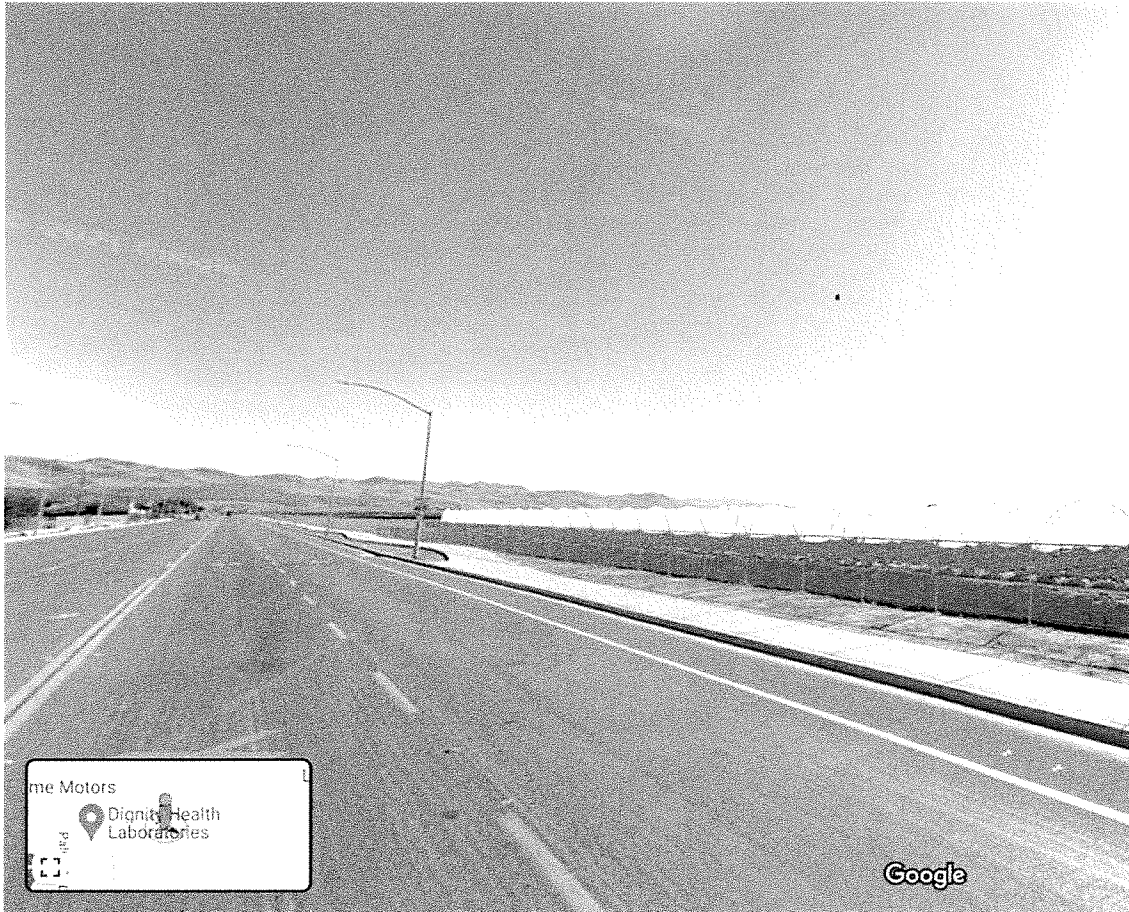
- 2. South Sney Rd between East Jones St and East Main St:
 - a. West side is occasionally fenced, but only for purposes of wind blocking



- b. South side is not fenced



- c. North side is a chain link fence and along a sidewalk that goes to a nearby housing development. Significant pedestrian and dog traffic.



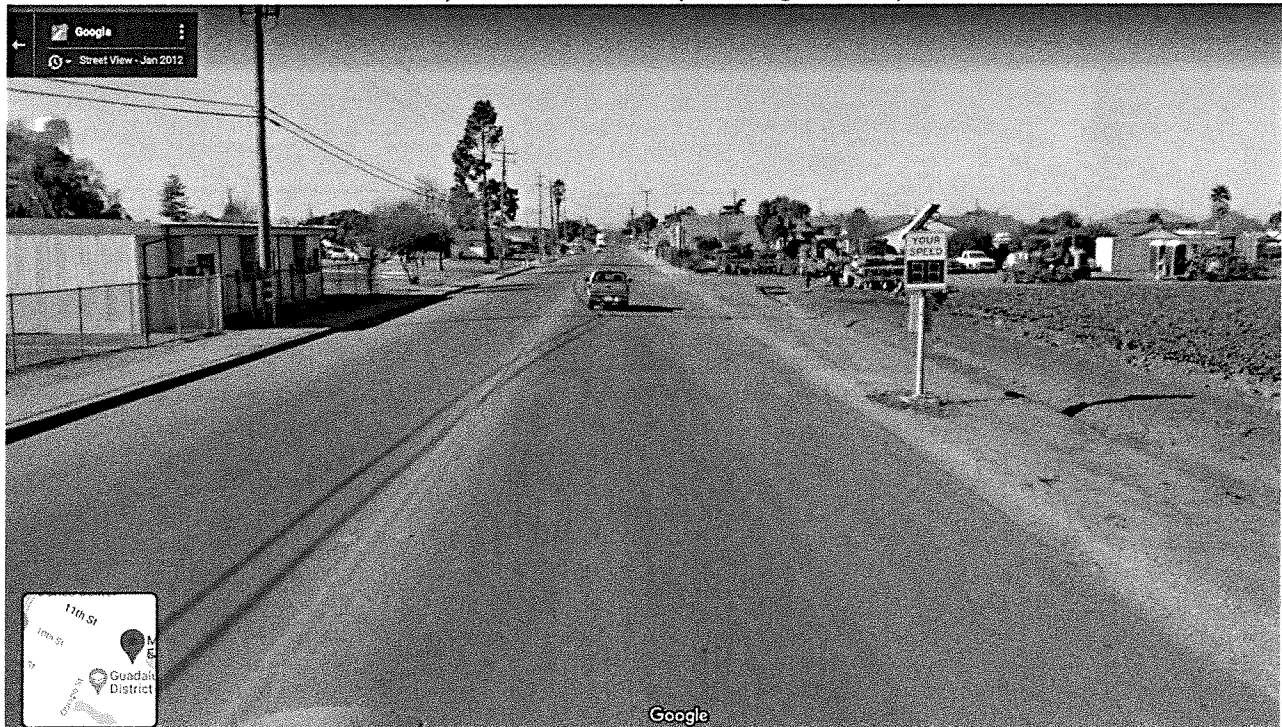
3. South College Dr between the Aldi supermarket and the cemetery: farmland is literally up against the sidewalk - there is no fence.

*Google image does not reflect current development, so it is not included.

4. West Stowell Rd between South Depot St and South Blosser Rd: across the street from Sanchez Elementary School and Sanchez State Preschool on the north side and the Minami Park soccer fields on the east side.



5. 11th Street, Guadalupe: Farmland is immediately next to houses, no fence or barrier. Across the street from Mary Buren Elementary with significant pedestrian traffic.



Santa Maria's existing outdoor spaces are heavily utilized, including the current levee trail. That is a great - and a clear indicator that this levee extension would see immediate use, thereby creating an immediate public good. There simply are no legitimate reasons to oppose the project if you're looking through the lens of what is best for the community. And each of you are elected to do just that. I hope you do the right thing and support this project.

Thank you for your time and consideration.

Leslie McGorman
Santa Maria, CA

Ramirez, Angelica

From: UCSB Womxn in Science & Engineering <ucsb.wise@gmail.com>
Sent: Saturday, May 14, 2022 8:33 PM
To: Hart, Gregg
Cc: sbcob
Subject: Please support the SM levee trail expansion!

Caution: This email originated from a source outside of the County of Santa Barbara. Do not click links or open attachments unless you verify the sender and know the content is safe.

Hi Supervisor Hart and Supervisor Williams,

I am a resident of Santa Barbara County and I'm reaching out in support of the proposal to expand the SM levee trail to Guadalupe.

Personally, I'm really excited about this opportunity to invest in the community of Santa Maria and create more opportunities for folks to walk, bike, and run with family & friends.

Currently, Santa Maria only has access to 8 miles of trails across two options, while Santa Barbara has over 130 miles of trails across 52 options. As the biggest city in the county with majority working class BIPOC residents, Santa Maria deserves better.

At its core, this proposal is an issue of environmental justice. Too often, communities of color receive disproportionate investment resulting in less access to green spaces. Extending the trail is an opportunity to remedy this issue and double the access to trails. I strongly urge you to advocate for the health of families in Santa Maria.

Thank you,

Emily Foley
Old Town Goleta

Ramirez, Angelica

From: UCSB Womxn in Science & Engineering <ucsb.wise@gmail.com>
Sent: Saturday, May 14, 2022 8:34 PM
To: Lavagnino, Steve; sbcob
Subject: Please support SM levee trail expansion!

Caution: This email originated from a source outside of the County of Santa Barbara. Do not click links or open attachments unless you verify the sender and know the content is safe.

Hi Supervisor Lavagnino,

I am a resident of Santa Maria and I'm reaching out in support of the proposal to expand the SM levee trail to Guadalupe. Personally, I'm really excited about this opportunity for my community to enjoy the trail to bike, walk, and run with our loved ones. I'd really love to see the county invest further into North County's outdoor spaces. Right now SM really only has this trail, which pales in comparison to all the beautiful trail options in Santa Barbara.

I also love the idea of being able to access the coast and Guadalupe from Santa Maria, instead of using Route 166, which can be quite dangerous due to the traffic. And on the topic of safety, I believe the streets of Santa Maria are not friendly for pedestrians and that my community deserves investment in a safe option to move around.

I hope you will listen to our community, and urge you to advocate for our needs.

Thank you,

Emily Foley
Old Town Goleta

Ramirez, Angelica

From: Lata Murti <latamurti@gmail.com>
Sent: Saturday, May 14, 2022 9:20 PM
To: Hart, Gregg; Supervisor Das Williams
Cc: sbcob
Subject: Please support the SM levee trail expansion!

Caution: This email originated from a source outside of the County of Santa Barbara. Do not click links or open attachments unless you verify the sender and know the content is safe.

Hi Supervisor Hart and Supervisor Williams,

I am a resident of Santa Barbara County and I'm reaching out in support of the proposal to expand the SM levee trail to Guadalupe.

Personally, I'm really excited about this opportunity to invest in the community of Santa Maria and create more opportunities for folks to walk, bike, and run with family & friends.

Currently, Santa Maria only has access to 8 miles of trails across two options, while Santa Barbara has over 130 miles of trails across 52 options. As the biggest city in the county with majority working class BIPOC residents, Santa Maria deserves better.

At its core, this proposal is an issue of environmental justice. Too often, communities of color receive disproportionate investment resulting in less access to green spaces. Extending the trail is an opportunity to remedy this issue and double the access to trails. I strongly urge you to advocate for the health of families in Santa Maria.

Thank you,

Lata Murti,

Orcutt, California

Ramirez, Angelica

From: Harold Hill <hillhal70@gmail.com>
Sent: Sunday, May 15, 2022 9:26 AM
To: sbcob
Subject: Santa Maria River trail expansion

Caution: This email originated from a source outside of the County of Santa Barbara. Do not click links or open attachments unless you verify the sender and know the content is safe.

Dear Santa Barbara County Board of Supervisors,

As a member of the Santa Barbara County Community Action Network I am excited to support the Santa Maria River trail expansion. Expanding and improving the levee trail will provide Santa Maria and Guadalupe residents with local access to natural areas, something which is sorely missed in North County. This trail would also provide access to the beach for pedestrians and bicyclists on a path which is free of cars – something currently unavailable to North County residents. Please vote yes for funding the extension.

Harold "Hal" Hill
Santa Barbara

Ramirez, Angelica

From: Thomas Brandeberry <tom@ladguadalupe.org>
Sent: Sunday, May 15, 2022 11:00 AM
To: sbcob
Subject: Guadalupe to Santa Maria Levee Trail (22-00409)

Caution: This email originated from a source outside of the County of Santa Barbara. Do not click links or open attachments unless you verify the sender and know the content is safe.

Hello,

I wish to comment on the above noted agenda items:

- There needs to be a better, proporsional, investment in open spaces between north and south county. This project would go a long way in improving the lack of north county investment.
- While Santa Maria only has access to 8 miles of trails, Guadalupe has none! None! This trail would give the Guadalupe community members a place to take care of their health, physically and mentally.
- With Guadalupe's economic goal of becoming a destination location, the trail is an important project of the community list of key economic projects that are needed. A trail to the ocean will be more viable when the trail from Santa Maria to Guadalupe is approved.

Thanks you,

Tom Brandeberry (he, him)
Co-Executive Director
Los Amigos de Guadalupe
(916) 281-7638
[Webpage](#)
[Facebook](#)
[Instagram](#)

Ramirez, Angelica

From: Andy G <1957andyg@gmail.com>
Sent: Sunday, May 15, 2022 11:21 AM
To: Matt.LaVere@ventura.org; Hart, Gregg; Supervisor Das Williams; sbcob; Lavagnino, Steve; Rebeca@causenow.org
Cc: Andy G
Subject: Guadalupe Bike Trail

Caution: This email originated from a source outside of the County of Santa Barbara. Do not click links or open attachments unless you verify the sender and know the content is safe.

Hello Santa Barbara County Board of Supervisors,

I am a 65 year resident of Guadalupe in Santa Barbara County. I am also a retired Vet and a grandfather. I'm reaching out in support of the proposal to expand the SM levee trail to Guadalupe. Personally, I'm really excited about this opportunity to invest in the communities of Guadalupe and Santa Maria to create more opportunities for folks to walk, bike, and run with family & friends. During the height of the pandemic, I had to take my grandkids and our bikes to look for places to teach them to ride their bikes that was safe.

Currently, Santa Maria only has access to 8 miles of trails across two options, while Santa Barbara has over 130 miles of trails across 52 options. As the biggest city in the county with majority working class BIPOC residents, Santa Maria along with Guadalupe deserve better. At its core, this proposal is an issue of environmental justice. Too often, communities of color receive disproportionate investment resulting in less access to green spaces. Extending the trail is an opportunity to remedy this issue and double the access to trails. I strongly urge you to advocate for the health of families in Santa Maria and Guadalupe.

Thank you,

Andres Gutierrez

1109 Guadalupe street

Guadalupe, CA 93434-1323

805 478 0228 (cell)

Ramirez, Angelica

From: Ernest Kirschner <ekirschner@gmail.com>
Sent: Sunday, May 15, 2022 1:24 PM
To: Lavagnino, Steve; Hart, Gregg; Supervisor Das Williams; sbcob

Caution: This email originated from a source outside of the County of Santa Barbara. Do not click links or open attachments unless you verify the sender and know the content is safe.

Dear County Supervisors,

My name is Ernest Kirschner, and I live and work in Santa Maria.

I am writing to urge your support for the development of a public use levee trail extension from Santa Maria to Guadalupe.

Santa Maria needs more open space as there is a disproportionate investment in open space across our county. Residents in Santa Maria only have access to eight miles of trails over two options, while Santa Barbara residents can access over 130 miles of trails and 52 options. Sadly, only 17% of county open space is located in the Santa Maria valley.

47% of Santa Maria residents live in areas with less than 3 acres of parks or open space per 1,000 residents. This project would double the miles of access to trails in Santa Maria.

There is fear that trail use on the proposed SM Levee Trail extension is incompatible with farming and will cause catastrophic economic harm to adjacent property. The reality on the ground in and around Santa Maria shows that to be completely wrong. Farms and trail use can co-exist and the levee trail can provide much-needed recreation opportunities, away from dangerous vehicle traffic. A properly designed and monitored trail would cause no more harm than any of the current streets, bike lanes, pathways, and sidewalks that are next to existing farms in our community.

I urge you to support the development of a public use levee trail connecting Santa Maria and Guadalupe.

Thank you,

Ernest Kirschner

Santa Maria, CA

Ramirez, Angelica

From: Kirsten Kirschner <kirsten.a.kirschner@gmail.com>
Sent: Sunday, May 15, 2022 1:41 PM
To: Hart, Gregg; sbcob; Lavagnino, Steve; Supervisor Das Williams
Subject: Santa Maria Levee Trail Extension

Caution: This email originated from a source outside of the County of Santa Barbara. Do not click links or open attachments unless you verify the sender and know the content is safe.

Dear County Supervisors,

My name is Kirsten Kirschner and I am a property owner and work in Santa Maria.

I am writing to urge your support for the development of a public use levee trail extension from Santa Maria to Guadalupe.

Santa Maria needs more open space as there is a disproportionate investment in open space across our county. Residents in Santa Maria only have access to eight miles of trails over two options, while Santa Barbara residents can access over 130 miles of trails and 52 options. Sadly, only 17% of county open space located in the Santa Maria valley. 47% of Santa Maria residents live in areas with less than 3 acres of parks or open space per 1,000 residents. This project would double the miles of access to trails in Santa Maria.

There is fear that trail use on the proposed SM Levee Trail extension is incompatible with farming and will cause catastrophic economic harm to adjacent property. The reality on the ground in and around Santa Maria shows that to be completely wrong. Farms and trail use can co-exist and the levee trail can provide much needed recreation opportunities, away from dangerous vehicle traffic. A properly designed and monitored trail would cause no more harm than any of the current streets, bike lanes, pathways and sidewalks that are next to existing farms in our community.

I urge you to support the development of a public use levee trail connecting Santa Maria and Guadalupe.

Thank you,

Kirsten Kirschner

Ramirez, Angelica

From: Rosio Ibarra <rosioibarra1205@gmail.com>
Sent: Sunday, May 15, 2022 1:45 PM
To: CEO Clerk of the Board
Cc: Hartmann, Joan; Supervisor Das Williams; Hart, Gregg; Lavagnino, Steve; Nelson, Bob

Caution: This email originated from a source outside of the County of Santa Barbara. Do not click links or open attachments unless you verify the sender and know the content is safe.

Hi Santa Barbara County Board of Supervisors,

I am a resident of Guadalupe and I'm reaching out in support of the proposal to expand the SM levee trail to Guadalupe. Personally, I'm really excited about this opportunity to invest in the community of Santa Maria and Guadalupe and create more opportunities for people to walk, bike, and run with family & friends.

Currently, Santa Maria only has access to 8 miles of trails across two options, Guadalupe has 0 miles of trails, while Santa Barbara has over 130 miles of trails across 52 options. At its core, this proposal is an issue of environmental justice. Too often, communities of color receive disproportionate investment resulting in less access to green spaces. Extending the trail is an opportunity to remedy this issue and double the access to trails. I strongly urge you to advocate for the health of families in Santa Maria and Guadalupe. Our children deserve access to walk, run and bike.

Thank you,

Rosio Ibarra

Guadalupe, CA.

Ramirez, Angelica

From: Danny Ettelson <danettelson@gmail.com>
Sent: Sunday, May 15, 2022 5:50 PM
To: Hart, Gregg
Cc: sbcob
Subject: Please support the SM levee trail expansion!

Caution: This email originated from a source outside of the County of Santa Barbara. Do not click links or open attachments unless you verify the sender and know the content is safe.

Hi Supervisor Hart and Supervisor Williams,

I am a resident of Santa Barbara County and I'm reaching out in support of the proposal to expand the SM levee trail to Guadalupe.

Personally, I'm really excited about this opportunity to invest in the community of Santa Maria and create more opportunities for folks to walk, bike, and run with family & friends.

Currently, Santa Maria only has access to 8 miles of trails across two options, while Santa Barbara has over 130 miles of trails across 52 options. As the biggest city in the county with majority working class BIPOC residents, Santa Maria deserves better.

At its core, this proposal is an issue of environmental justice. Too often, communities of color receive disproportionate investment resulting in less access to green spaces. Extending the trail is an opportunity to remedy this issue and double the access to trails. I strongly urge you to advocate for the health of families in Santa Maria.

Thank you,
Danny Ettelson

Ramirez, Angelica

From: Bella Blanco <bellabee526@gmail.com>
Sent: Sunday, May 15, 2022 10:03 PM
To: Lavagnino, Steve; sbcob
Subject: Please support SM levee trail expansion!

Caution: This email originated from a source outside of the County of Santa Barbara. Do not click links or open attachments unless you verify the sender and know the content is safe.

Hi Supervisor Lavagnino,

I am a resident of Santa Maria and I'm reaching out in support of the proposal to expand the SM levee trail to Guadalupe. Personally, I'm really excited about this opportunity for my community to enjoy the trail to bike, walk, and run with our loved ones. I'd really love to see the county invest further into North County's outdoor spaces. Right now SM really only has this trail, which pales in comparison to all the beautiful trail options in Santa Barbara.

I also love the idea of being able to access the coast and Guadalupe from Santa Maria, instead of using Route 166, which can be quite dangerous due to the traffic. And on the topic of safety, I believe the streets of Santa Maria are not friendly for pedestrians and that my community deserves investment in a safe option to move around.

I hope you will listen to our community, and urge you to advocate for our needs.

Thank you,

Isabella Blanco
bellabee526@gmail.com

Ramirez, Angelica

From: Laura Selken <laura.selken@gmail.com>
Sent: Monday, May 16, 2022 1:47 AM
To: sbcob
Subject: Read into the record May 17 - Public Comment on Santa Maria Levee (last item on agenda)

Caution: This email originated from a source outside of the County of Santa Barbara. Do not click links or open attachments unless you verify the sender and know the content is safe.

To the Board of Supervisors of Santa Barbara County ~

I am a resident of Santa Maria, and I strongly support expanding the Santa Maria levee trail to Guadalupe. I'm asking for your support, as well. I am extremely excited about this proposal. It will provide untold opportunities for me and my fellow residents of this area of North Santa Barbara County to enjoy an extended path to bike, walk, and run!

I really hope the county will choose to invest in improving and expanding this outdoor space, especially in a region that has been neglected for years. North Santa Barbara County has very few trails, especially outside of Santa Maria, whereas other areas of the County have countless choices.

The expanded levee will be a safe and easily accessible trail for so many. As someone who has used the levee extensively, I would like to be able to travel even further toward the coast. It is quite difficult to bike, run, or even walk in the city. Many areas are not conducive or safe. It's shocking to see the poor condition or complete lack of proper sidewalks in my neighborhood alone! And of course, the threat of being hit by a car is always in the forefront of my mind.

This is an opportunity for you to benefit many - no matter who they are or their socioeconomic status. I hope you will agree and support expanding the Santa Maria levee trail.

Thank you for your time,
Laura Selken
1611 Via Rico
Santa Maria

Ramirez, Angelica

From: Kathleen M Sharum <ksharum@me.com>
Sent: Monday, May 16, 2022 8:24 AM
To: sbcob
Cc: Williams, Das; Hart, Gregg; Hartmann, Joan; Nelson, Bob; Lavagnino, Steve
Subject: Comment Agenda Item 22-00409 Santa Maria Levee Trail Study

Caution: This email originated from a source outside of the County of Santa Barbara. Do not click links or open attachments unless you verify the sender and know the content is safe.

Dear Supervisors Hart, Hartmann, Lavagnino, Nelson and Williams,

SURJ (Showing Up for Racial Justice) Santa Maria urges you to support the Santa Maria Levee Trail.

The existing Tom Urbanske Multipurpose Trail is very popular but is only 2.7 miles of unpaved trail. This is a travesty for a city of our size in our location on the beautiful Central Coast. A plan to provide an improved bike and pedestrian-friendly trail that unites the communities of the fifth district would be more than just adding miles of improved trail but would also be building community.

It has been well documented that communities of color are often the sites for industry and receive less investment in green spaces all the way down to having fewer trees in their neighborhoods. This is clearly the case in Santa Barbara County. Despite being the largest city in the county, Santa Maria has only eight miles of trails over two locations while Santa Barbara has over 130 miles of trails over 52 locations! Why the big discrepancy? Our residents are majority working class, communities of color, with few local options for healthy activities such as walking, hiking, and bicycling. We deserve better.

We can work through the obstacles but Santa Maria needs this extended trail. Investing in this trail is investing in the community. SURJ Santa Maria urges the Supervisors to approve this project and to begin the process of building community.

Thank you for your consideration and efforts.

The Santa Maria Chapter of SURJ - Showing Up for Racial Justice

SURJ (Showing Up for Racial Justice) Santa Maria works to eliminate racism and support those most impacted by it.

Sent from my iPad

Ramirez, Angelica

From: Ailene Garrido <turkeyhollow7@gmail.com>
Sent: Monday, May 16, 2022 9:01 AM
To: sbcob
Subject: Guadalupe to Santa Maria Levee Trail

Caution: This email originated from a source outside of the County of Santa Barbara. Do not click links or open attachments unless you verify the sender and know the content is safe.

I am so happy I discovered Guadalupe. I have lived here for 2 years. As a retired resident, I was thrilled to hear about the proposed levee trail from Santa Maria to Guadalupe. I see all the benefits for north Santa Barbara County, and people like me. I enjoy walking and bicycling, and this trail will provide a safe path to exercise and be outdoors. I am a member of several walking and hiking groups. I see this trail as being the newest and exciting destination with great weather, beautiful views of the green fields, the Santa Maria River, Casmelia hills, and the Guadalupe dunes.

"Who is the first to see the water tower?" "We're almost there and ready for refreshments at one of the many choice restaurants and coffee shops."

Please make this happen.

Thank you,

Ailene Hughes Garrido

4449 Ladera Drive
Guadalupe, CA. 93434
turkeyhollow7@gmail.com

Ramirez, Angelica

From: Monica Valencia <trekriders49@gmail.com>
Sent: Monday, May 16, 2022 9:14 AM
To: sbcob
Subject: SM Levee Trail Proposal

Caution: This email originated from a source outside of the County of Santa Barbara. Do not click links or open attachments unless you verify the sender and know the content is safe.

Hi Santa Barbara County Board of Supervisors,

My name is Monica Valencia a resident of Guadalupe and I'm reaching out in support of the proposal to expand the SM levee trail to Guadalupe. Personally, I'm really excited about this opportunity to invest in the community of Santa Maria and Guadalupe and create more opportunities for people to walk, bike, and run with family & friends.

Currently, Santa Maria only has access to 8 miles of trails across two options, Guadalupe has 0 miles of trails, while Santa Barbara has over 130 miles of trails across 52 options. At its core, this proposal is an issue of environmental justice. Too often, communities of color receive disproportionate investment resulting in less access to green spaces. Extending the trail is an opportunity to remedy this issue and double the access to trails. I strongly urge you to advocate for the health of families in Santa Maria and Guadalupe. Our children deserve access to walk, run and bike.

Thank you for your time and consideration

Monica Valencia.

Sanchez Drive

Guadalupe CA 93434

Ramirez, Angelica

From: Logan Cimino <lcimino300@gmail.com>
Sent: Saturday, May 14, 2022 10:09 AM
To: Lavagnino, Steve; sbcob
Subject: Please support SM levee trail expansion!

Caution: This email originated from a source outside of the County of Santa Barbara. Do not click links or open attachments unless you verify the sender and know the content is safe.

Hi Supervisor Lavagnino,

I am a resident of Santa Maria and I'm reaching out in support of the proposal to expand the SM levee trail to Guadalupe. Personally, I'm really excited about this opportunity for my community to enjoy the trail to bike, walk, and run with our loved ones. I'd really love to see the county invest further into North County's outdoor spaces. Right now SM really only has this trail, which pales in comparison to all the beautiful trail options in Santa Barbara.

I also love the idea of being able to access the coast and Guadalupe from Santa Maria, instead of using Route 166, which can be quite dangerous due to the traffic. And on the topic of safety, I believe the streets of Santa Maria are not friendly for pedestrians and that my community deserves investment in a safe option to move around.

I hope you will listen to our community, and urge you to advocate for our needs.

Thank you,

Logan Cimino, Resident of Goleta

Ramirez, Angelica

From: Logan Cimino <lcimino300@gmail.com>
Sent: Saturday, May 14, 2022 10:08 AM
To: Hart, Gregg; Supervisor Das Williams
Cc: sbcob
Subject: Please support the SM levee trail expansion!

Caution: This email originated from a source outside of the County of Santa Barbara. Do not click links or open attachments unless you verify the sender and know the content is safe.

Hi Supervisor Hart and Supervisor Williams,

I am a resident of Santa Barbara County and I'm reaching out in support of the proposal to expand the SM levee trail to Guadalupe.

Personally, I'm really excited about this opportunity to invest in the community of Santa Maria and create more opportunities for folks to walk, bike, and run with family & friends.

Currently, Santa Maria only has access to 8 miles of trails across two options, while Santa Barbara has over 130 miles of trails across 52 options. As the biggest city in the county with majority working class BIPOC residents, Santa Maria deserves better.

At its core, this proposal is an issue of environmental justice. Too often, communities of color receive disproportionate investment resulting in less access to green spaces. Extending the trail is an opportunity to remedy this issue and double the access to trails. I strongly urge you to advocate for the health of families in Santa Maria.

Thank you,

Logan Cimino, Resident of Goleta

Ramirez, Angelica

From: Christine Bourgeois <cbarreb@gmail.com>
Sent: Saturday, May 14, 2022 12:13 PM
To: Lavagnino, Steve; sbcob
Subject: Please support SM levee trail expansion!

Caution: This email originated from a source outside of the County of Santa Barbara. Do not click links or open attachments unless you verify the sender and know the content is safe.

Hi Supervisor Lavagnino,

I am a resident of Santa Maria and I'm reaching out in support of the proposal to expand the SM levee trail to Guadalupe. Personally, I'm really excited about this opportunity for my community to enjoy the trail to bike, walk, and run with our loved ones. I'd really love to see the county invest further into North County's outdoor spaces. Right now SM really only has this trail, which pales in comparison to all the beautiful trail options in Santa Barbara.

I also love the idea of being able to access the coast and Guadalupe from Santa Maria, instead of using Route 166, which can be quite dangerous due to the traffic. And on the topic of safety, I believe the streets of Santa Maria are not friendly for pedestrians and that my community deserves investment in a safe option to move around.

I hope you will listen to our community, and urge you to advocate for our needs.

Thank you,
Christine Bourgeois
Resident and homeowner in Santa Barbara County

Ramirez, Angelica

From: Vanessa Surname <surnamevanessa@gmail.com>
Sent: Saturday, May 14, 2022 6:50 PM
To: Hart, Gregg; Supervisor Das Williams
Cc: sbcob
Subject: Please support the SM levee trail expansion!

Caution: This email originated from a source outside of the County of Santa Barbara. Do not click links or open attachments unless you verify the sender and know the content is safe.

Hi Supervisor Hart and Supervisor Williams,

I am a resident of Santa Barbara County and I'm reaching out in support of the proposal to expand the SM levee trail to Guadalupe.

Personally, I'm really excited about this opportunity to invest in the community of Santa Maria and create more opportunities for folks to walk, bike, and run with family & friends.

Currently, Santa Maria only has access to 8 miles of trails across two options, while Santa Barbara has over 130 miles of trails across 52 options. As the biggest city in the county with majority working class BIPOC residents, Santa Maria deserves better.

At its core, this proposal is an issue of environmental justice. Too often, communities of color receive disproportionate investment resulting in less access to green spaces. Extending the trail is an opportunity to remedy this issue and double the access to trails. I strongly urge you to advocate for the health of families in Santa Maria.

Thank you,

Vanessa Brintrup

Sent from my iPhone

Ramirez, Angelica

From: RB <seidenbergr@gmail.com>
Sent: Saturday, May 14, 2022 4:49 PM
To: Lavagnino, Steve; Hart, Gregg; Supervisor Das Williams; sbcob
Subject: Public use levee trail

Caution: This email originated from a source outside of the County of Santa Barbara. Do not click links or open attachments unless you verify the sender and know the content is safe.

Dear County Supervisors,

I am a resident of Santa Barbara County and I'm writing to urge your support for the development of a public use levee trail extension from Santa Maria to Guadalupe.

Santa Maria needs more open space as there is a disproportionate investment in open space across our county. Residents in Santa Maria only have access to eight miles of trails over two options, while Santa Barbara residents can access over 130 miles of trails and 52 options. Sadly, only 17% of county open space is located in the Santa Maria valley. 47% of Santa Maria residents live in areas with less than 3 acres of parks or open space per 1,000 residents. This project would double the miles of access to trails in Santa Maria.

There is fear that trail use on the proposed SM Levee Trail extension is incompatible with farming and will cause catastrophic economic harm to adjacent property. The reality on the ground in and around Santa Maria shows that to be completely wrong. Farms and trail use can co-exist and the levee trail can provide much-needed recreation opportunities, away from dangerous vehicle traffic. A properly designed and monitored trail would cause no more harm than any of the current streets, bike lanes, pathways, and sidewalks that are next to existing farms in our community.

I urge you to support the development of a public use levee trail connecting Santa Maria and Guadalupe.

Thank you,

Richard Seidenberg

Santa Maria, CA

Ramirez, Angelica

From: Amado Lopez <alopezg351@gmail.com>
Sent: Saturday, May 14, 2022 3:55 PM
To: Lavagnino, Steve; Hart, Gregg; Supervisor Das Williams; sbcob

Caution: This email originated from a source outside of the County of Santa Barbara. Do not click links or open attachments unless you verify the sender and know the content is safe.

Dear County Supervisors,

My name is Amado Lopez and I live in Santa Maria and Work at Santa Maria Bici Centro.

I am writing to urge your support for the development of a public use levee trail extension from Santa Maria to Guadalupe.

Santa Maria needs more open space as there is a disproportionate investment in open space across our county. Residents in Santa Maria only have access to eight miles of trails over two options, while Santa Barbara residents can access over 130 miles of trails and 52 options. Sadly, only 17% of county open space located in the Santa Maria valley. 47% of Santa Maria residents live in areas with less than 3 acres of parks or open space per 1,000 residents. This project would double the miles of access to trails in Santa Maria.

There is fear that trail use on the proposed SM Levee Trail extension is incompatible with farming and will cause catastrophic economic harm to adjacent property. The reality on the ground in and around Santa Maria shows that to be completely wrong. Farms and trail use can co-exist and the levee trail can provide much needed recreation opportunities, away from dangerous vehicle traffic. A properly designed and monitored trail would cause no more harm than any of the current streets, bike lanes, pathways and sidewalks that are next to existing farms in our community.

I urge you to support the development of a public use levee trail connecting Santa Maria and Guadalupe.

Thank you,

Amado Lopez, 406 W MORRISON AVE APT 61

Ramirez, Angelica

From: Linda Ramirez <linda.ramirez19@gmail.com>
Sent: Monday, May 16, 2022 9:52 AM
To: Hart, Gregg; Supervisor Das Williams
Cc: sbcob
Subject: Please support the SM levee trail expansion!

Caution: This email originated from a source outside of the County of Santa Barbara. Do not click links or open attachments unless you verify the sender and know the content is safe.

Hi Supervisor Hart and Supervisor Williams,

I am a resident of Santa Barbara County and I'm reaching out in support of the proposal to expand the SM levee trail to Guadalupe.

Personally, I'm really excited about this opportunity to invest in the community of Santa Maria and create more opportunities for folks to walk, bike, and run with family & friends.

Currently, Santa Maria only has access to 8 miles of trails across two options, while Santa Barbara has over 130 miles of trails across 52 options. As the biggest city in the county with majority working class BIPOC residents, Santa Maria deserves better.

At its core, this proposal is an issue of environmental justice. Too often, communities of color receive disproportionate investment resulting in less access to green spaces. Extending the trail is an opportunity to remedy this issue and double the access to trails. I strongly urge you to advocate for the health of families in Santa Maria.

Thank you,

Linda Ramirez

Sent from my iPhone

Ramirez, Angelica

From: Rachel Altman <raltmansb@gmail.com>
Sent: Monday, May 16, 2022 9:55 AM
To: Lavagnino, Steve; sbcob
Subject: Please support SM levee trail expansion!

Caution: This email originated from a source outside of the County of Santa Barbara. Do not click links or open attachments unless you verify the sender and know the content is safe.

Hi Supervisor Lavagnino,

I am a resident of Santa Maria and I'm reaching out in support of the proposal to expand the SM levee trail to Guadalupe. Personally, I'm really excited about this opportunity for my community to enjoy the trail to bike, walk, and run with our loved ones. I'd really love to see the county invest further into North County's outdoor spaces. Right now SM really only has this trail, which pales in comparison to all the beautiful trail options in Santa Barbara.

I also love the idea of being able to access the coast and Guadalupe from Santa Maria, instead of using Route 166, which can be quite dangerous due to the traffic. And on the topic of safety, I believe the streets of Santa Maria are not friendly for pedestrians and that my community deserves investment in a safe option to move around.

I hope you will listen to our community, and urge you to advocate for our needs.

Thank you,

Rachel Altman
Santa Barbara, CA

Ramirez, Angelica

From: Linda Ramirez <linda.ramirez19@gmail.com>
Sent: Monday, May 16, 2022 9:58 AM
To: sbcob
Subject: May 17, 2022 Public Comment

Caution: This email originated from a source outside of the County of Santa Barbara. Do not click links or open attachments unless you verify the sender and know the content is safe.

Hello,

I am the second generation of my family to live in Santa Maria. My 11 year old daughter is the third generation. I want to ensure that there are safe out door spaces for our youth and community to dwell at for generations to come. There were millions of dollars spent on the northern county jail less than 2 miles from my neighborhood, Tanglewood. But we do not have any parks or trails within that same distance. It's will be nice to have a trail within our city where we can exercise.

It's very disappointing to see the criminalization of our community and how much money is directed at criminalization vs health promotion. To hear that the reason the trail isn't being built is because our community is seen as crime prone and that we will destroy or damage the surrounding areas, is very disappointing and disturbing.

I am a community member and a registered nurse. I ask that you please consider continuing with the construction of this trail for the well-being of our community.

Thank you,
Linda Ramirez

Ramirez, Angelica

From: Gary Prober <gprober@yahoo.com>
Sent: Monday, May 16, 2022 10:04 AM
To: Lavagnino, Steve; sbcob
Subject: Please support SM levee trail expansion!

Caution: This email originated from a source outside of the County of Santa Barbara. Do not click links or open attachments unless you verify the sender and know the content is safe.

Dear Steve,

As you know, Bill Orndorff was my brother-in-law. During his 20 years as SM Community Development Director, he was passionate about creating hiking/biking trails in the valley. He and I rode to Guadalupe on the levee many times. We had to fend our way around gates, over rocks, and through brush to get to Guadalupe and brunch at the Far Western before returning to SM on the levee. I listened to many of Bill's accounts of negotiations with the Army Corps of Engineers and farmers in his efforts to make the levee accessible to the public. That fact that the levee trail is still not complete is discouraging. Please do your best to convince your fellow supervisors that the trail needs to be completed NOW.

Sincerely—your neighbor,

Gary Prober
119 E. Camino Colegio
Santa Maria

Sent from my iPad

Ramirez, Angelica

From: scottfina@gmail.com
Sent: Monday, May 16, 2022 10:11 AM
To: sbcob
Subject: Public Comment --Extension of the Santa Maria River Levee Trail from Santa Maria to Guadalupe

Caution: This email originated from a source outside of the County of Santa Barbara. Do not click links or open attachments unless you verify the sender and know the content is safe.

Public Comment -- Supervisor Meeting May 17, 2022 -- Item 22-00409

Dear County Supervisors,

I write in support of the extension of the Santa Maria River Levee Trail from Santa Maria to Guadalupe. The extension of this trail will provide healthy recreational opportunity for families/residents of the Santa Maria Valley, especially many of our lower and moderate income families living in Santa Maria and Guadalupe.

The extension of the trail will also support the cohesion of the recently revised 5th County Supervisor District, connecting the cities of Santa Maria and Guadalupe geographically and with a shared recreational interest and asset.

I note that were the complaints-opposition against the extension of the trail by the Growers and Shippers Association valid and taken to their logical end, and uniformly employed, it would be necessary to close parts of Highways 1 and 166 and Clark Avenue, and Black and Solomon Roads—all of which run along farm fields in the Santa Maria Valley (among other roadways) and receive the agricultural treatments described in the Growers and Shippers Association comments.

The refusal of the extension of the Levee Trail will amount to a case where commercial interests—a few farms—are supported over those of the farmworker families whose labor lies at the very base of the Ag economy in the Santa Maria Valley.

Thank you.

Scott Fina
4430 Old Mill Court
Santa Maria, CA 93455

Ramirez, Angelica

From: Jeanne Sparks <jeanne.sparks@icloud.com>
Sent: Monday, May 16, 2022 10:10 AM
To: sbcob
Cc: Williams, Das; Hart, Gregg; Hartmann, Joan; Nelson, Bob; Lavagnino, Steve
Subject: May 17 BOS Agenda Item #7, Letter in support of the Santa Maria River Levee Trail extension

Caution: This email originated from a source outside of the County of Santa Barbara. Do not click links or open attachments unless you verify the sender and know the content is safe.

May 16, 2022

Dear Chair Hartmann and Supervisors Williams, Hart, Nelson and Lavagnino:

I am submitting my guest commentary that was published in the Santa Maria Times on May 14, 2022. I hope you will consider the history behind the opening of the 2002 segment of Santa Maria levee trail, originally called the Santa Maria-Guadalupe Bike Trail, and the need to complete the trail 20 years later.

I urge you to approve completion of the trail on the levee from Santa Maria to Guadalupe as it was envisioned more than 30 years ago when it was placed into the County's Circulation Element.

Now is the time to complete the trail that will provide an exceptional recreational asset to the Santa Maria Valley, a feature that will come to define the valley, a resource people will remember when thinking about the beauty of the valley.

Your decision on Tuesday will shape the look and feel of the Santa Maria Valley for decades to come. I urge you to complete the trail.

Sincerely,

Jeanne Sparks

Associate Director, Santa Barbara County Action Network

Former Fifth District Executive Assistant from 1991 to 2003

Guest Commentary by Jeanne Sparks published in the Santa Maria Times on May 14, 2022

"Tell supervisors to expand Santa Maria River levee trail to Guadalupe"

It's a travesty that we don't have a trail on the levee from Santa Maria to Guadalupe when it had been proposed more than 30 years ago, but it's not too late.

I was working in the Fifth District Supervisor's Office in 1992 when the City of Santa Maria proposed moving forward with a plan to establish a levee bikeway that was in the county regional plan. It would take coordination between the county and the city since the county owned and maintained the levee and the city would provide access to the public.

The county's Flood Control District worried about liability, but that issue eventually was resolved.

What was not resolved was the opposition from farmers who feared crops would be spoiled since farm fields are next to the levee, and they believed having a trail on the levee would attract people and dogs to romp in their fields.

However, their argument does not hold water. People and dogs can already access their fields. And many bikeways and walkways already run beside farm fields in the Santa Maria Valley because farm fields are ubiquitous in our valley.

Farmers say a better alternative would be to put a bikeway next to Highway 166, but that road runs between farm fields. How are those fields different from fields next to the levee?

Highway 166 is unsafe and unpleasant for pedestrians and cyclists from the heavy, noisy trucks that regularly travel that road. It does not have the serenity and beauty of the riverbed.

The lack of safe trails and bikeways in the Santa Maria Valley is an injustice to the people who live here, the majority of whom are people of color. County supervisors, especially those who represent this area, should be pushing for this levee trail to be extended to Guadalupe just as Supervisor Tom Urbanske pushed for the initial segment of the trail to be created.

That segment, from Suey Crossing Road to North Blosser Road, was opened on Jan. 11, 2002, after years of efforts by the Fifth District Office and the City. Urbanske and I hoped that the trail would eventually be extended after the first segment was opened and it grew in popularity.

We are at that point now. There is a large constituency of county residents who would like the trail to be opened.

On Tuesday, May 17, the Board of Supervisors will consider whether to extend the trail to Guadalupe. Supervisors will decide whether to create a wonderful recreational and transportation asset for the residents of the north county or whether they will cave to pressure from powerful agricultural interests.

It's a sad fact that lower-income residents of the north county, many of whom are farmworkers, have fewer recreational opportunities than wealthier south county residents. For example, Santa Barbara has over 130 miles across 52 trails while residents of Santa Maria have a mere eight miles of trails in two areas.

North county supervisors have often lamented that the north county doesn't get its fair share. Here is an opportunity for north county supervisors to provide some greatly needed recreational opportunities for their constituents and for south county supervisors to stand up for environmental justice.

Will they do it?

I hope so. Maybe if enough people speak up on Tuesday at the Board of Supervisors hearing or send letters to the board by Monday, supervisors will do the right thing. It is item number seven and is expected to come up at 3 p.m.

Go to countyofsb.org or sbcan.org for details on how to make your voice heard.

I hope you will help make this opportunity a reality.

Jeanne Sparks is the associate director of Santa Barbara County Action Network. She served as the Fifth District executive assistant from 1991 to 2003.

Ramirez, Angelica

From: David Amenta <dra354@yahoo.com>
Sent: Monday, May 16, 2022 10:27 AM
To: Lavagnino, Steve; Hart, Gregg; Supervisor Das Williams
Cc: sbcob
Subject: Support SM Levee trail

Caution: This email originated from a source outside of the County of Santa Barbara. Do not click links or open attachments unless you verify the sender and know the content is safe.

Greetings Supervisors:

Please support the SM Levee trail extension to Guadalupe. The Santa Maria valley's outdoor opportunities are so inferior to neighboring communities like San Luis Obispo and Santa Barbara that I am continually disappointed and embarrassed. The open spaces, bike and multi-purpose trails that these communities have created reflect creative, thoughtful leadership. This is your chance to remedy our valley's astounding lack of modern, creative community thinking. The arguments put forth by the farmers in opposition are outdated, selfish, inaccurate, and environmentally inadequate.

Please vote to support this extension. What a grand opportunity to create a path to the sea from Santa Maria. What a huge plus for all of us, and for the local tourist industry.

Thank you,

David Amenta
1305 Woodmere Rd
Santa Maria, CA 93455
805 400 4741

Ramirez, Angelica

From: David Amenta <dra354@yahoo.com>
Sent: Monday, May 16, 2022 10:27 AM
To: Lavagnino, Steve; Hart, Gregg; Supervisor Das Williams
Cc: sbcob
Subject: Support SM Levee trail

Caution: This email originated from a source outside of the County of Santa Barbara. Do not click links or open attachments unless you verify the sender and know the content is safe.

Greetings Supervisors:

Please support the SM Levee trail extension to Guadalupe. The Santa Maria valley's outdoor opportunities are so inferior to neighboring communities like San Luis Obispo and Santa Barbara that I am continually disappointed and embarrassed. The open spaces, bike and multi-purpose trails that these communities have created reflect creative, thoughtful leadership. This is your chance to remedy our valley's astounding lack of modern, creative community thinking. The arguments put forth by the farmers in opposition are outdated, selfish, inaccurate, and environmentally inadequate.

Please vote to support this extension. What a grand opportunity to create a path to the sea from Santa Maria. What a huge plus for all of us, and for the local tourist industry.

Thank you,

David Amenta
1305 Woodmere Rd
Santa Maria, CA 93455
805 400 4741

Ramirez, Angelica

From: Eva Didion <didioneva@yahoo.com>
Sent: Monday, May 16, 2022 10:58 AM
To: Hart, Gregg; Supervisor Das Williams
Cc: sbcob
Subject: Please support the SM levee trail expansion!

Caution: This email originated from a source outside of the County of Santa Barbara. Do not click links or open attachments unless you verify the sender and know the content is safe.

Hi Supervisor Hart and Supervisor Williams,

I am a resident of Santa Barbara County and I'm reaching out in support of the proposal to expand the SM levee trail to Guadalupe.

Personally, I'm really excited about this opportunity to invest in the community of Santa Maria and create more opportunities for folks to walk, bike, and run with family & friends.

Currently, Santa Maria only has access to 8 miles of trails across two options, while Santa Barbara has over 130 miles of trails across 52 options. As the biggest city in the county with majority working class BIPOC residents, Santa Maria deserves better.

At its core, this proposal is an issue of environmental justice. Too often, communities of color receive disproportionate investment resulting in less access to green spaces. Extending the trail is an opportunity to remedy this issue and double the access to trails. I strongly urge you to advocate for the health of families in Santa Maria.

Thank you,

(name and approx. address)

Eva Didion (she, her)
House of Pride and Equality Board Member

Sent from my iPhone

Ramirez, Angelica

From: Tiffany Manriquez <tiffanymanriquez27@gmail.com>
Sent: Monday, May 16, 2022 12:32 PM
To: sbcob
Cc: Hartmann, Joan

Caution: This email originated from a source outside of the County of Santa Barbara. Do not click links or open attachments unless you verify the sender and know the content is safe.

Hi Santa Barbara County Board of Supervisors,

I am a resident of Guadalupe and I'm reaching out in support of the proposal to expand the SM levee trail to Guadalupe. Personally, I'm really excited about this opportunity to invest in the community of Santa Maria and Guadalupe and create more opportunities for people to walk, bike, and run with family & friends.

Currently, Santa Maria only has access to 8 miles of trails across two options, Guadalupe has 0 miles of trails, while Santa Barbara has over 130 miles of trails across 52 options. At its core, this proposal is an issue of environmental justice. Too often, communities of color receive disproportionate investment resulting in less access to green spaces. Extending the trail is an opportunity to remedy this issue and double the access to trails. I strongly urge you to advocate for the health of families in Santa Maria and Guadalupe. Our children deserve access to walk, run and bike.

Thank you,

Tiffany Manriquez, Guadalupe, 4713 Maryknoll Dr.

Ramirez, Angelica

From: Ed France <edfrance@gmail.com>
Sent: Monday, May 16, 2022 12:33 PM
To: sbcob
Subject: Public Works Item #7 Support the Santa Maria Levee Trail (22-00409)

Caution: This email originated from a source outside of the County of Santa Barbara. Do not click links or open attachments unless you verify the sender and know the content is safe.

Esteemed Supervisors,

The Santa Maria Levee is a significant community resource waiting to be unlocked for all of our communities' benefit. The City of Santa Maria has significantly invested in its section of Levee for public access and benefit and it behooves the county to do the same. Please find this item exempt from the provisions of CEQA as it is simply a feasibility study. Please recommend staff to pursue the permitting and completion of the Levee trail and a priority for our region.

Just as in all pathway and trail projects, adjacent property stakeholders are rightfully concerned about the unknown. Similar projects throughout the state adjacent to agriculture demonstrate that these concerns are easily mitigatable and far less significant than the resulting benefit to the community at large and the local agricultural interests directly as well.

On a scouting trip years ago I rode this entire corridor and studied it with stakeholders. This is a surprisingly feasible project to complete, and highly worthwhile. I can attest to the benefits:

- Economic Development for Guadalupe & Santa Maria
- Public Health benefits through active recreation
- Safe & manageable access to existing parks and open space
- Safe Commuter corridor, especially for electric bikes.
- Connectivity for local school bike field trips

The Santa Maria Levee trail is a critical project for the economic and physical health of Guadalupe and Santa Maria. I can't wait to come out and ride it again, visit the Dunes, eat lunch in Guadalupe, take and share pictures of a beautiful part of the Central Coast that more residents from our region can enjoy and appreciate.

Thank you,

Ed France

--

Edward France
(805) 203-6940

Ramirez, Angelica

From: Thomas Brandeberry <tom@ladguadalupe.org>
Sent: Monday, May 16, 2022 12:36 PM
To: Shirley Boydston; sbcob
Subject: Re: Guadalupe to Santa Maria Levee Trail

Caution: This email originated from a source outside of the County of Santa Barbara. Do not click links or open attachments unless you verify the sender and know the content is safe.

Hello, Santa Barbara Clerk of the Board.

The additional person in the email (Shirley Boydston) is having trouble emailing you her comments on the Levee project, which is the subject of this email chain. She is one of Guadalupe most important and civic minded seniors and likely needs some assistance in being able to get her comments to you. If you could reply to this email and confirm this is the correct email address, I am sure Ms. Boydston will be able to then reply to you with her comments.

Thanks,

Tom Brandeberry
(916) 281-7638

On Mon, May 16, 2022 at 12:17 PM Shirley Boydston <guadnana28@gmail.com> wrote:
I've tried that e address 3 times and it comes back. HELP.

On Sun, May 15, 2022 at 10:42 AM Thomas Brandeberry <tom@ladguadalupe.org> wrote:

On May 17, 2022 (9:00 AM) the Santa Barbara County Board of Supervisors will be voting on the Levee Trail Study, the next step is the completion of a walking and biking trail from Guadalupe to Santa Maria.

Aside from attending in person, here are some suggestion way to participate and have your voice heard:

Watching: You may observe the live stream of the Board of Supervisors meetings on Local Cable Channel 20, online at the Clerk of the Boards, or on YouTube.

Commenting Remotely:

Distribution to the Board of Supervisors - Submit your comment via email prior to 5 pm. Monday May 16 (tomorrow). Please submit your comment to the Clerk of the Board: sbcob@countyofsb.org . Your comment will be placed into the record and distributed to the supervisors.

If you wish to have your comments read: follow the above steps, but add to your email: "read into the record." Limit of 250 words.

By phone: - If you would like to make a comment by phone, please call 805-568-2240 and state your name, your phone number and which item you would like to speak on and the clerk will call you at the appropriate time. Please make every effort to be available and mute all streaming devices once it is your turn to speak.

Talking Points: You will find attached some talking points, developed by CAUSE (thanks you Rebeca Garcia). Feel free to use them as they fit your beliefs on this subject.

Los Amigos de Guadalupe has supported this project and advocated from our first involvement. We believe the benefits to the community of Guadalupe would be enormous; from a health perspective, from a recreational, from an economic perspective, and from an environmental perspective. It would help continue the community resilient future.

Tom Brandeberry (he, him)

Los Amigos de Guadalupe

(916) 281-7638

Webpage

Facebook

Instagram

Ramirez, Angelica

From: Ann Moore <annkmoore@icloud.com>
Sent: Monday, May 16, 2022 1:40 PM
To: sbcob
Cc: Hartmann, Joan; Supervisor Das Williams; Hart, Gregg; Lavagnino, Steve; Nelson, Bob
Subject: Levee expansion

Caution: This email originated from a source outside of the County of Santa Barbara. Do not click links or open attachments unless you verify the sender and know the content is safe.

Hello Board of Supervisors,

I live in Guadalupe and am reaching out in support of the proposal to expand the SM levee trail to Guadalupe! How exciting it would be to have public accessible trails for biking, running and walking. This is a very needed addition to our local towns and cities.

I have live in other places that have vast trails accessible to the public, and it makes the community so much better. They provide a place for families and individuals to get out into green spaces, to enjoy time together and in nature. They allow for easier exercise and promote healthier living.

I hope that you will approve this expansion!

Thank you,
Ann Moore
Guadalupe, CA.

Ramirez, Angelica

From: Robert Bernstein <robert@robert.name>
Sent: Monday, May 16, 2022 2:09 PM
To: sbcob
Subject: Support Santa Maria to Guadalupe Levee Trail

Caution: This email originated from a source outside of the County of Santa Barbara. Do not click links or open attachments unless you verify the sender and know the content is safe.

To County Clerk:

Please read the following message into the record on this item on the agenda May 17, 2022.

As Transportation Chair of the Sierra Club Santa Barbara Group, I want to give my support to the Santa Maria to Guadalupe Levee Trail.

While the South County has a number of such trails, the lower income North County is desperately in need of such transportation and recreational opportunities. It is ironic that many of these people in need are farm workers, yet some of the local agribusiness is fighting against this access for their own workers!

I have experience riding the levee trail in Sacramento where my parents lived for decades. It was heavily used by a very diverse community of commuters, students and recreational pedestrians, runners and bicyclists.

It is unfortunate that this trail was not built sooner. Please proceed as soon as possible. Thank you!

Best wishes,

Robert Bernstein

Vice Chair and Transportation Chair - Sierra Club Santa Barbara Group robert@robert.name

Robert Bernstein

7100 Georgetown Road

Goleta, CA 93117

Ramirez, Angelica

From: Thomas Matthias <tlmxii@yahoo.com>
Sent: Monday, May 16, 2022 2:36 PM
To: sbcob
Subject: Support Santa Maria to Guadalupe Levee Trail

Caution: This email originated from a source outside of the County of Santa Barbara. Do not click links or open attachments unless you verify the sender and know the content is safe.

To Santa Barbara County Clerk
re: Santa Maria to Guadalupe Levee Trail

Please read the following message into the record on this item on the agenda May 17, 2022.

As an active transportation, touring bicyclist and instructor for the League of American Bicyclists I want to give my full and enthusiastic support to the Santa Maria to Guadalupe Levee Trail.

Having ridden on tours through Guadalupe going North and South I reflected on what a pleasant place it is to ride, that the terrain is conducive to bicycling, and how the community has maintained a rare feature these days - an active and attractive downtown.

As I've pedaled in many parts of the country I couldn't help noticing the difference in economic activity and upkeep of the attractive features of a town center between those communities that have invested in bicycling infrastructure and those that have not.

So allow me to contribute these points to the discussion of the merits of investing in the Santa Maria to Guadalupe Levee Trail with my encouragement to benefit both these communities by the proven means of promoting bicycling and walking.

With appreciation for your consideration

Thomas L. Matthias

636 East Sola St.,
Santa Barbara, CA 93103
tlmxii@yahoo.com

Ramirez, Angelica

From: Melanie Backer <melbacker@me.com>
Sent: Monday, May 16, 2022 2:40 PM
To: sbcob
Cc: Melanie Backer
Subject: Read into the Record - Please

Caution: This email originated from a source outside of the County of Santa Barbara. Do not click links or open attachments unless you verify the sender and know the content is safe.

Dear Santa Barbara County Board of Supervisors,

I implore you to extend the Santa Maria Levee Trail to Guadalupe, CA. Both towns and its citizens, young and old will benefit greatly, health-wise, and mental-health wise by having a safe walking and bike Path between the cities. Kids, teenagers and young adults in Guadalupe have no safe place to ride bikes, walk and get outside. Hwy 166 to Santa Maria and to the Guadalupe Dunes Preserve is not safe to bike on. Hwy 1 even through the town of Guadalupe is not safe to bike on. When I want to exercise and bike — I ride around the Pasadera neighborhood and Obispo street in Guadalupe. I put a bike rack on the back of my car and drive to Bob Jones Trail or other trails to get a true, big workout. I have access to a car and bike rack — Most young people in Guadalupe don't. These students in Santa Maria and Guadalupe have been cooped up, isolated and on computers for 2 1/2 years — Let's give them the joy, peace and safety of being outside, and being in nature. A safe trail — A place for families, neighbors & community to be outside will also help stop the horrible violence we witnessed again this weekend in Buffalo and Laguna Woods. Enough is enough! Teddy Roosevelt created the National Parks so we could all be outside and enjoy nature — Santa Barbara County with all this beautiful open space and clean air can do our part. It's worth it!

Thank you -

Melanie Backer
4428 Ladera Dr.
Guadalupe, CA 93434
melbacker@me.com

Ramirez, Angelica

From: Audralyn Macdonald <macdonald.audy@gmail.com>
Sent: Monday, May 16, 2022 12:18 PM
To: sbcob
Subject: Investing in the health of Santa Maria's residents

Caution: This email originated from a source outside of the County of Santa Barbara. Do not click links or open attachments unless you verify the sender and know the content is safe.

~ Please read into the record ~

County Supervisors,

My name is Audy Macdonald and I work in Santa Barbara County. As a visitor to the county for both work and play, I am appalled at the disproportionate investment in open space across the county. I am writing to urge your support for the development of the levee trail extension from Santa Maria to Guadalupe because Santa Marians deserve better.

Residents in Santa Maria only have access to **eight miles** of trails while residents in Santa Barbara can access over **130 miles** of trails. Why is Santa Maria always left out? Why aren't we investing in communities of color the way we have already invested in communities within the same county?! Access to recreational areas are paramount to the physical health and mental health of all Santa Barbara County residents. This project would double the miles of access to trails and safely accommodate bicyclists, joggers and pedestrians away from the heavy traffic of Main St. Participation in outdoor recreational activities helps to manage stress, reduce anxiety and depression and improve our overall health and well-being.

I urge you to support the development of this public use levee trail which would both bridge the communities of Santa Maria and Guadalupe and invest in the health of all Santa Barbara County residents.

Thank you,

Audy Macdonald