

ATTACHMENT 8: COASTAL LAND USE PLAN RESOLUTION

**RESOLUTION OF THE BOARD OF SUPERVISORS
COUNTY OF SANTA BARBARA, STATE OF CALIFORNIA**

IN THE MATTER OF ADOPTING SPECIFIC)
AMENDMENTS TO THE COASTAL LAND USE PLAN) RESOLUTION NO. 16 - _____
OF THE SANTA BARBARA COUNTY LOCAL COASTAL)
PROGRAM BY THE ADOPTION OF THE GAVIOTA) Case No.: 13GPA-00000-00007
COAST PLAN.)

WITH REFERENCE TO THE FOLLOWING:

- A. On January 7, 1980, by Resolution No. 80-12, the Board of Supervisors adopted the Santa Barbara County Coastal Land Use Plan.
- B. The proposed amendments are consistent with the Coastal Act of 1976, the Santa Barbara County Coastal Land Use Plan, the Santa Barbara County Comprehensive Plan including the Goleta Community Plan, and the requirements of California Planning, Zoning, and Development laws.
- C. In 2016, a Final Environmental Impact Report for the Gaviota Coast Plan, including EIR Revision Letter RV01, was prepared and presented to the County Planning Commission, subsequent to circulation of a Draft Environmental Impact Report to the appropriate agencies and public, and a public hearing was held to solicit public comments in compliance with to the California Environmental Quality Act (CEQA).
- D. Citizens, California Native American Indian tribes, public agencies, public utility companies, and civic, education, and other community groups have been provided the opportunity for involvement in compliance with Government Code Section 65351.
- E. The County contacted and offered to conduct consultations with California Native American tribes in compliance with Government Code Sections 65352.3 and 65352.4.
- F. The County Planning Commission held duly noticed public hearings, as required by Government Code Section 65353, on the proposed amendments, at which hearings the amendments were explained and comments invited from the persons in attendance.
- G. The Planning Commission, after holding duly noticed public hearings on the above described amendments to the Comprehensive Plan, endorses and transmits to the Board of Supervisors said recommended amendments by resolution in compliance with Government Code Section 65354.
- H. The Board received and considered the Planning Commission's recommended actions and held a duly noticed public hearing, as required by Government Code Section 65353, on the proposed amendments at which hearing the amendments were explained and comments invited from the persons in attendance.
- I. In compliance with Government Code Section 65350.5, before a substantial amendment of the Comprehensive Plan, the Board is required to review and consider a groundwater sustainability plan or groundwater management plan, an adjudication of water rights, and/or an order or interim plan by the State Water Resources Control Board; however, such plans do not exist at the time of this action, thus the Board has satisfied its duties pursuant to Government Code Section 65350.5.

NOW, THEREFORE, IT IS HEREBY RESOLVED as follows:

1. The above recitations are true and correct.
2. The Board of Supervisors now finds, consistent with its authority in Government Code Section 65358, that it is in the public interest to provide orderly development of the County and important to the preservation of the health, safety, and general welfare of the residents of the County to:
 - a. Adopt the Gaviota Coast Plan as an amendment to the Coastal Land Use Plan of the Santa Barbara County Local Coastal Program (Exhibit 1).
 - b. Amend the Coastal Land Use Plan as follows:
 - (1) Section 3.7.4 Policies, of Chapter 3: The Resource Protection and Development Policies, is amended to delete the existing Gaviota Coast Planning Area section consisting of the section heading “Gaviota Coast Planning Area” and Policy 7-13 through Policy 7-19, including implementing actions, in its entirety.
 - (2) Section 3.7.4 Policies, of Chapter 3: The Resource Protection and Development Policies, is amended to delete Policy 7-21.
 - (3) The existing text of Section 3.8 Agriculture, of Chapter 3: The Resource Protection and Development Policies, is amended to delete Policy 8-8 in its entirety.
 - (4) The existing text of Section 4.6 Gaviota Coast, of Chapter 4: The Planning Areas, is deleted in its entirety and replaced with the following:

4.6 GAVIOTA COAST

In 2016, the County adopted an Area Plan for the Gaviota Coast Plan area. The Gaviota Coast Plan describes the community and the relevant issues it faces and establishes land use designations and zone districts to guide future development. In addition, the Plan contains a number of policies and actions that serve to implement its goals and objectives.

See Appendix K for the complete Gaviota Coast Plan.

- (5) In **CHAPTER 4: THE PLANNING AREAS**, add the following new text between the existing section and subsection headings “**4.7 NORTH COAST**” and “**4.7.1 CHARACTER OF THE PLANNING AREA**”:

“The following discussion is superseded as to those areas that are contained within the Gaviota Coast Plan area described in Section 4.6 Gaviota Coast.”
- (6) Add a new appendix to the existing list of appendices to read as follows:

APPENDIX K: GAVIOTA COAST PLAN (PUBLISHED SEPARATELY)
- c. Amend the maps of the Coastal Land Use Plan of the Santa Barbara County Local Coastal Program as follows:
 - (1) Adopt the coastal zone portions of maps titled “Gaviota Coast Plan Land Use Designations - West” (Exhibit 2-A) and “Gaviota Coast Plan Land Use Designations - East” (Exhibit 2-B), which together depict the land use designations within the Gaviota Coast Plan area;
 - (2) Adopt the coastal zone portions of maps titled “Gaviota Coast Plan Land Use Overlay Designations - West” (Exhibit 3-A) and “Gaviota Coast Plan Land Use Overlay

Designations - East” (Exhibit 3-B), which together depict the land use overlay designations within the Gaviota Coast Plan area;

- (3) Adopt the coastal zone portions of maps titled “Gaviota Coast Plan Environmentally Sensitive Habitat Land Use and Zoning Overlays - West” (Exhibit 4-A) and “Gaviota Coast Plan Environmentally Sensitive Habitat Land Use and Zoning Overlays - East” (Exhibit 4-B), which together depict the environmentally sensitive habitat area within the Gaviota Coast Plan area;
 - (4) Adopt the coastal zone portions of maps titled “Gaviota Coast Plan Parks, Recreation & Trails - West” (Exhibit 5-A), “Gaviota Coast Plan Parks, Recreation & Trails - Central” (Exhibit 5-B), and “Gaviota Coast Plan Parks, Recreation & Trails - East” (Exhibit 5-C), which together depict existing and proposed recreational areas and trail alignments within the Gaviota Coast Plan area;
 - (5) Amend the existing map titled “Gaviota Coast Rural Region Land Use Map” by:
 - (a) Removing the land use designations located within the coastal zone portions of the “Gaviota Coast Plan Land Use Designations - West” (Exhibit 2-A) and “Gaviota Coast Plan Land Use Designations - East” (Exhibit 2-B), and
 - (b) Repealing and retiring the coastal zone portion of Gaviota Coast Rural Region Land Use Map;
 - (6) Amend the existing map titled “North Gaviota Coast Rural Region Land Use Map” by:
 - (a) Removing the land use designations located within the coastal zone portions of the “Gaviota Coast Plan Land Use Designations - West” (Exhibit 2-A), and
 - (b) Repealing and retiring the coastal zone portion of North Gaviota Coast Rural Region Land Use Map;
 - (7) Amend the existing map titled “Lompoc Valley Rural Region Land Use Map” by:
 - (a) Removing the land use designations located within the coastal zone portions of the “Gaviota Coast Plan Land Use Designations - West” (Exhibit 2-A) and “Gaviota Coast Plan Land Use Designations - East” (Exhibit 2-B); and
 - (b) Revising the boundary of the “Lompoc Valley Rural Region Land Use Map” to be coincident with the boundary of the “Gaviota Coast Plan Land Use Designations - West” (Exhibit 2-A) where they abut;
 - (8) Repeal and retire the existing map titled “Gaviota Coast Coastal Plan Land Use Overlay Map;”
 - (9) Repeal and retire the existing map titled “Point Conception Area Coastal Plan Land Use Overlay Map.”
3. In compliance with the provisions of Government Code Section 65356, the above described changes are hereby adopted as amendments to the Coastal Land Use Plan of the Santa Barbara County Local Coastal Program.
 4. Pursuant to provisions of Government Code Section 65357, the Clerk of the Board is hereby described to make the documents amending the Santa Barbara County Comprehensive Plan, including the diagrams and text, available to the public for inspection.
 5. The Chair and the Clerk of this Board are hereby authorized and directed to sign and certify all

maps, documents, and other materials in accordance with this Resolution to reflect the above described action by the Board.

6. Pursuant to the provisions of Government Code Section 65357 the Clerk of the Board is hereby authorized and directed to send endorsed copies of said maps to the planning agency of each city within this County.

PASSED, APPROVED AND ADOPTED by the Board of Supervisors of the County of Santa Barbara, State of California, this _____ day of _____, 2016, by the following vote:

AYES:
NOES:
ABSTAINED:
ABSENT:

PETER ADAM, CHAIR
BOARD OF SUPERVISORS
COUNTY OF SANTA BARBARA

MONA MIYASATO, COUNTY EXECUTIVE OFFICER
CLERK OF THE BOARD

By: _____
Deputy Clerk

APPROVED AS TO FORM:

MICHAEL C. GHIZZONI
COUNTY COUNSEL

By: _____
Deputy County Counsel

Exhibits:

- | | |
|-------------|--|
| Exhibit 1 | Gaviota Coast Plan |
| Exhibit 2-A | Gaviota Coast Plan Land Use Designations - West |
| Exhibit 2-B | Gaviota Coast Plan Land Use Designations – East |
| Exhibit 2-C | Gaviota Coast Plan Land Use Designations – Coastal Strip Detail |
| Exhibit 3-A | Gaviota Coast Plan Land Use Overlay Designations – West |
| Exhibit 3-B | Gaviota Coast Plan Land Use Overlay Designations – East |
| Exhibit 3-C | Gaviota Coast Plan Land Use Overlay Designations – Coastal Strip Detail |
| Exhibit 4-A | Gaviota Coast Plan Environmentally Sensitive Habitat Land Use and Zoning Overlays – West |
| Exhibit 4-B | Gaviota Coast Plan Environmentally Sensitive Habitat Land Use and Zoning Overlays – East |
| Exhibit 5-A | Gaviota Coast Plan Parks, Recreation & Trails – West |
| Exhibit 5-B | Gaviota Coast Plan Parks, Recreation & Trails – Central |
| Exhibit 5-C | Gaviota Coast Plan Parks, Recreation & Trails – East |

EXHIBIT 1

GAVIOTA COAST PLAN

Available online at <http://longrange.sbcountyplanning.org/planareas/gaviota/gaviota.php>

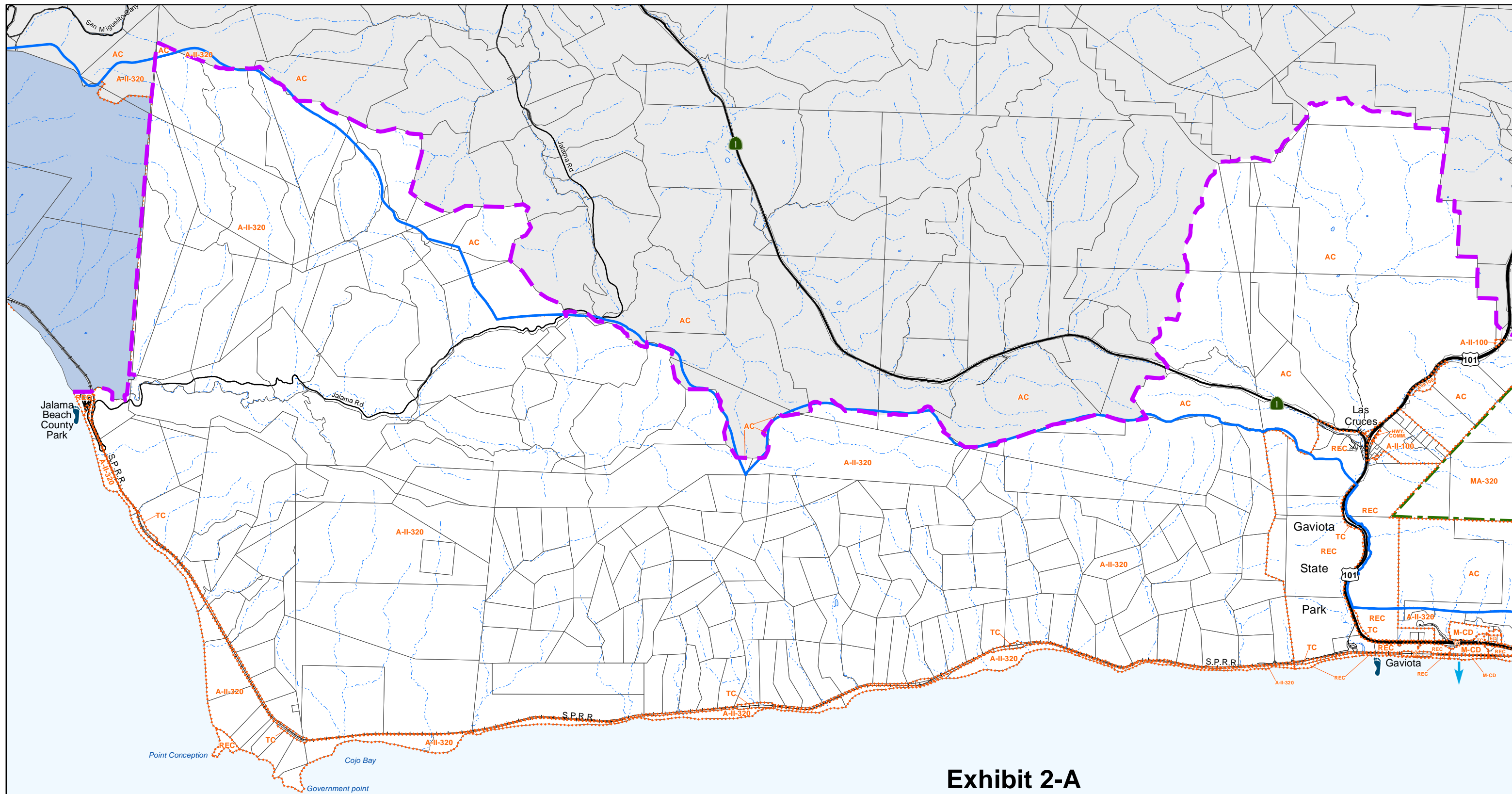
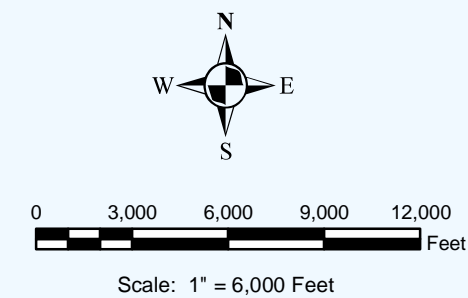


Exhibit 2-A Gaviota Coast Plan Land Use Designations - West



- | | | |
|---|--|---|
| <ul style="list-style-type: none"> - - - - - Land Use Designation Boundary — Coastal Zone Boundary Rural Neighborhood — Gaviota Coast Plan Boundary | <ul style="list-style-type: none"> ↓ Proposed Beach Access ↓ Existing Beach Access (Adopted by Coastal Plan) ↓ Proposed Beach Access (Adopted by Coastal Plan) Proposed Public or Private Park/Recreational Facility | <ul style="list-style-type: none"> - - - - - Los Padres National Forest Boundary Vandenberg Air Force Base |
|---|--|---|

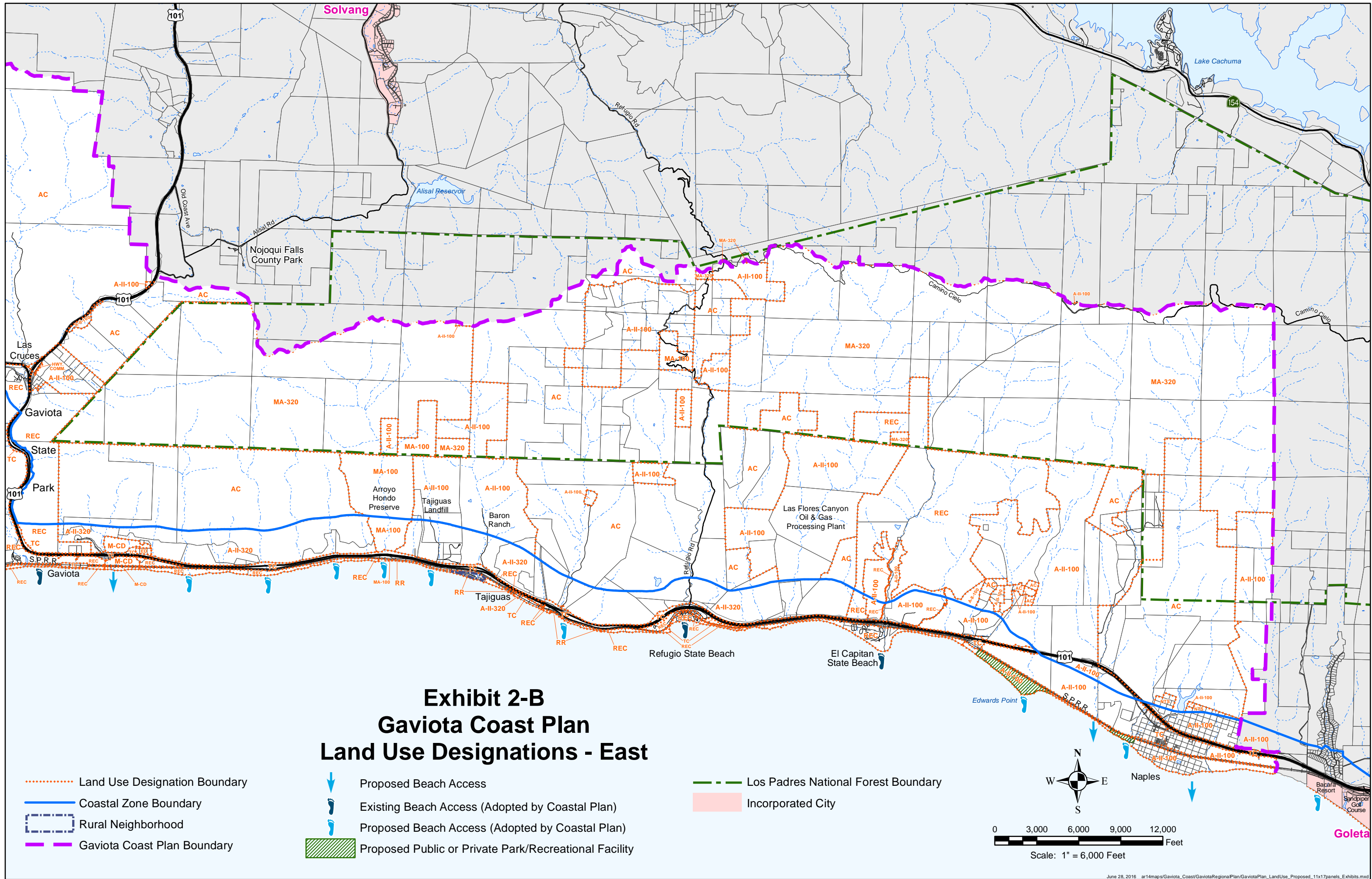
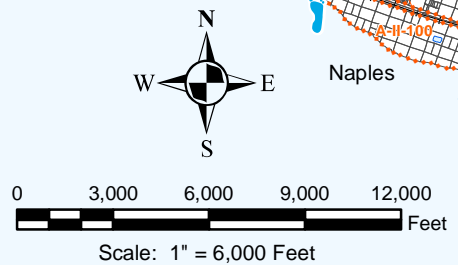
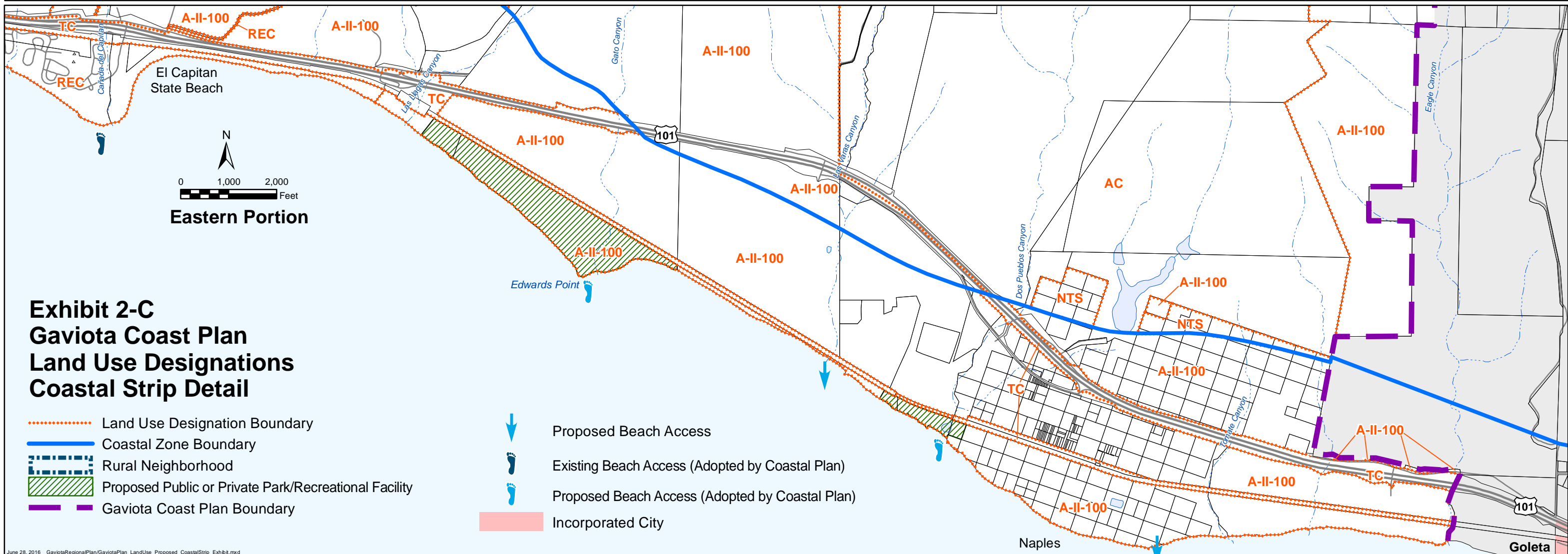
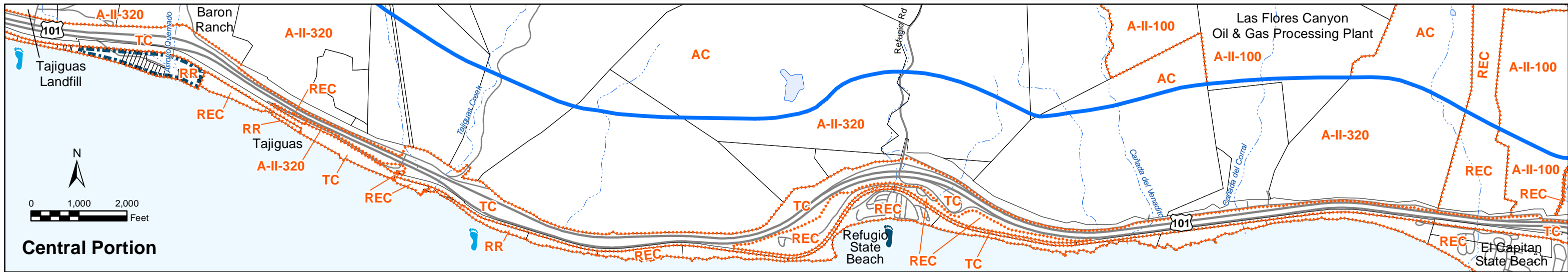
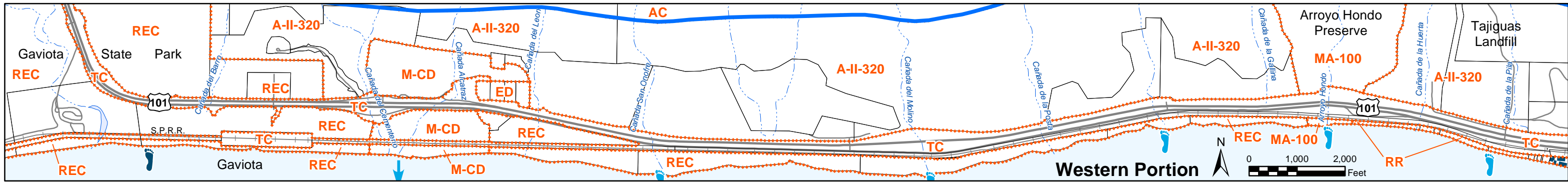


Exhibit 2-B Gaviota Coast Plan Land Use Designations - East

- | | | |
|--|---|--|
| <ul style="list-style-type: none"> ⋯⋯⋯ Land Use Designation Boundary — Coastal Zone Boundary Rural Neighborhood — Gaviota Coast Plan Boundary | <ul style="list-style-type: none"> ↓ Proposed Beach Access ↓ Existing Beach Access (Adopted by Coastal Plan) ↓ Proposed Beach Access (Adopted by Coastal Plan) Proposed Public or Private Park/Recreational Facility | <ul style="list-style-type: none"> - - - Los Padres National Forest Boundary Incorporated City |
|--|---|--|





**Exhibit 2-C
Gaviota Coast Plan
Land Use Designations
Coastal Strip Detail**

- ⋯⋯⋯ Land Use Designation Boundary
- Coastal Zone Boundary
- Rural Neighborhood
- Proposed Public or Private Park/Recreational Facility
- Gaviota Coast Plan Boundary

- ↓ Proposed Beach Access
- ⬇ Existing Beach Access (Adopted by Coastal Plan)
- ⬇ Proposed Beach Access (Adopted by Coastal Plan)
- Incorporated City

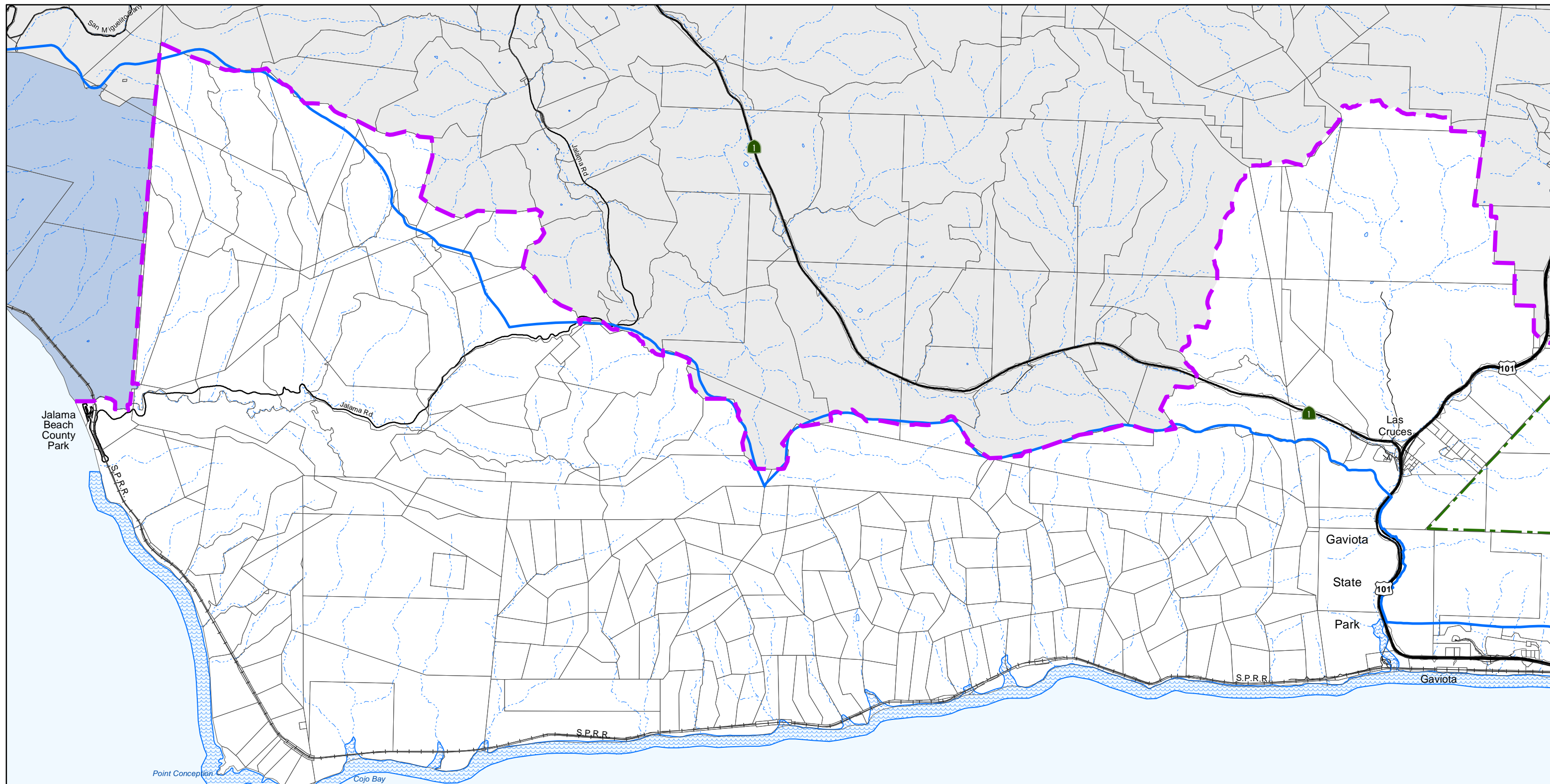
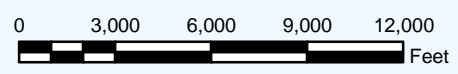
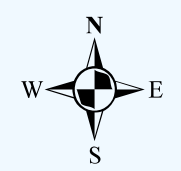
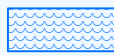






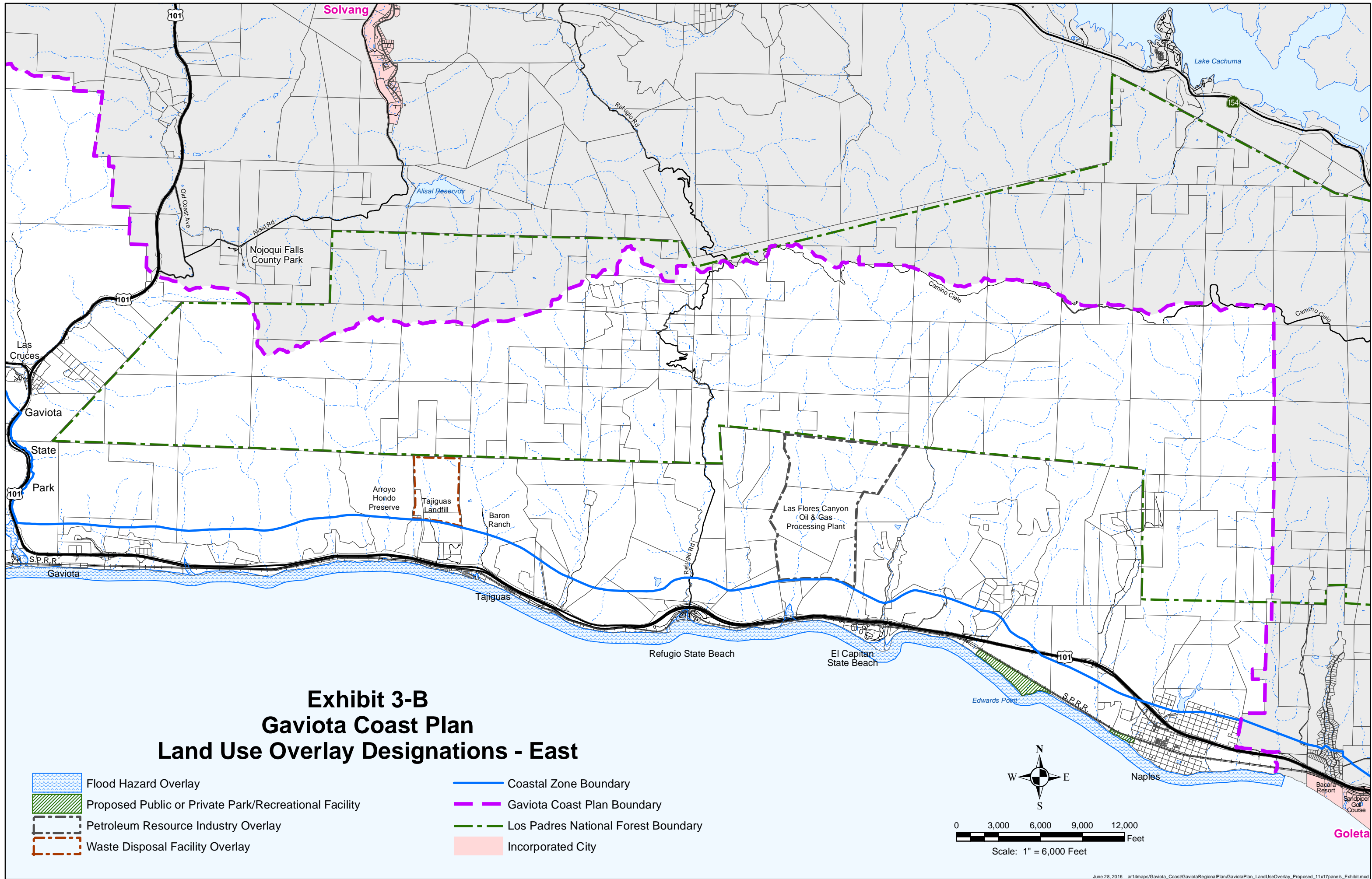


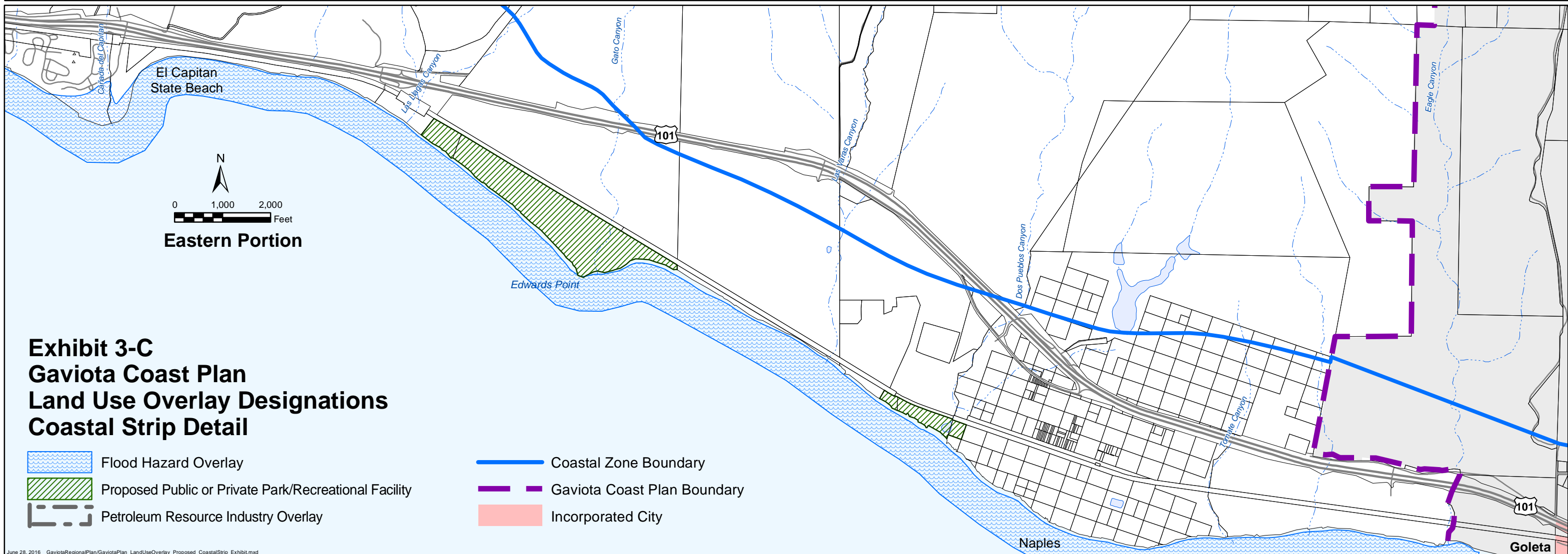
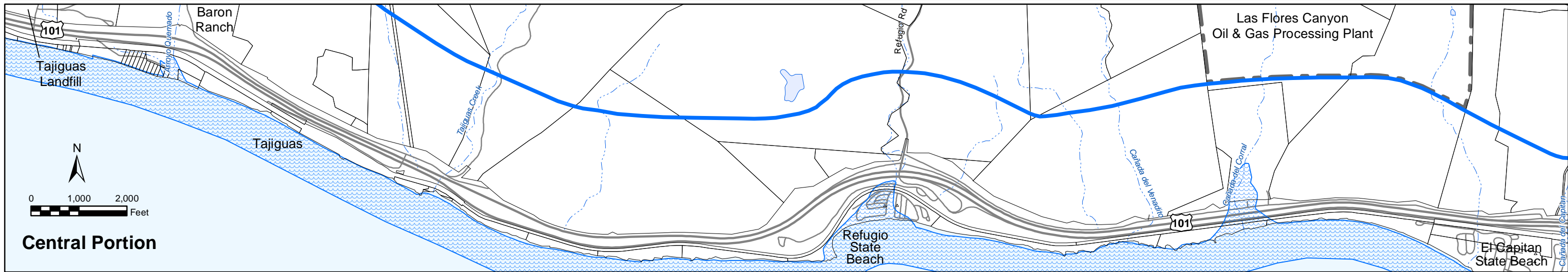
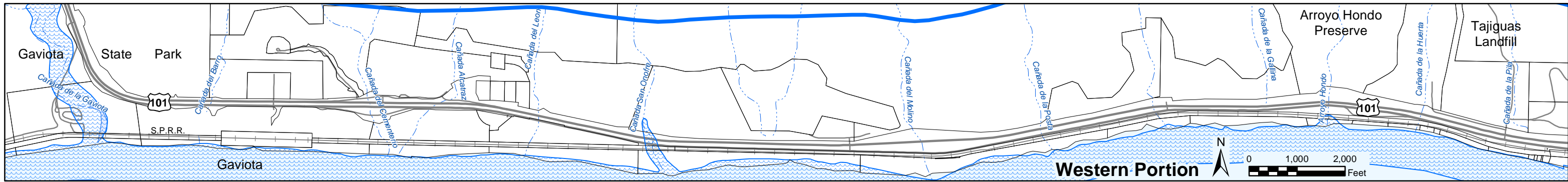
Exhibit 3-A Gaviota Coast Plan Land Use Overlay Designations - West




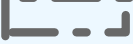
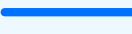
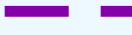

Scale: 1" = 6,000 Feet

- | | | | |
|---|---|---|-------------------------------------|
|  | Flood Hazard Overlay |  | Coastal Zone Boundary |
|  | Proposed Public or Private Park/Recreational Facility |  | Gaviota Coast Plan Boundary |
|  | Petroleum Resource Industry Overlay |  | Los Padres National Forest Boundary |
|  | Waste Disposal Facility Overlay |  | Vandenberg Air Force Base |





**Exhibit 3-C
Gaviota Coast Plan
Land Use Overlay Designations
Coastal Strip Detail**

-  Flood Hazard Overlay
-  Proposed Public or Private Park/Recreational Facility
-  Petroleum Resource Industry Overlay
-  Coastal Zone Boundary
-  Gaviota Coast Plan Boundary
-  Incorporated City

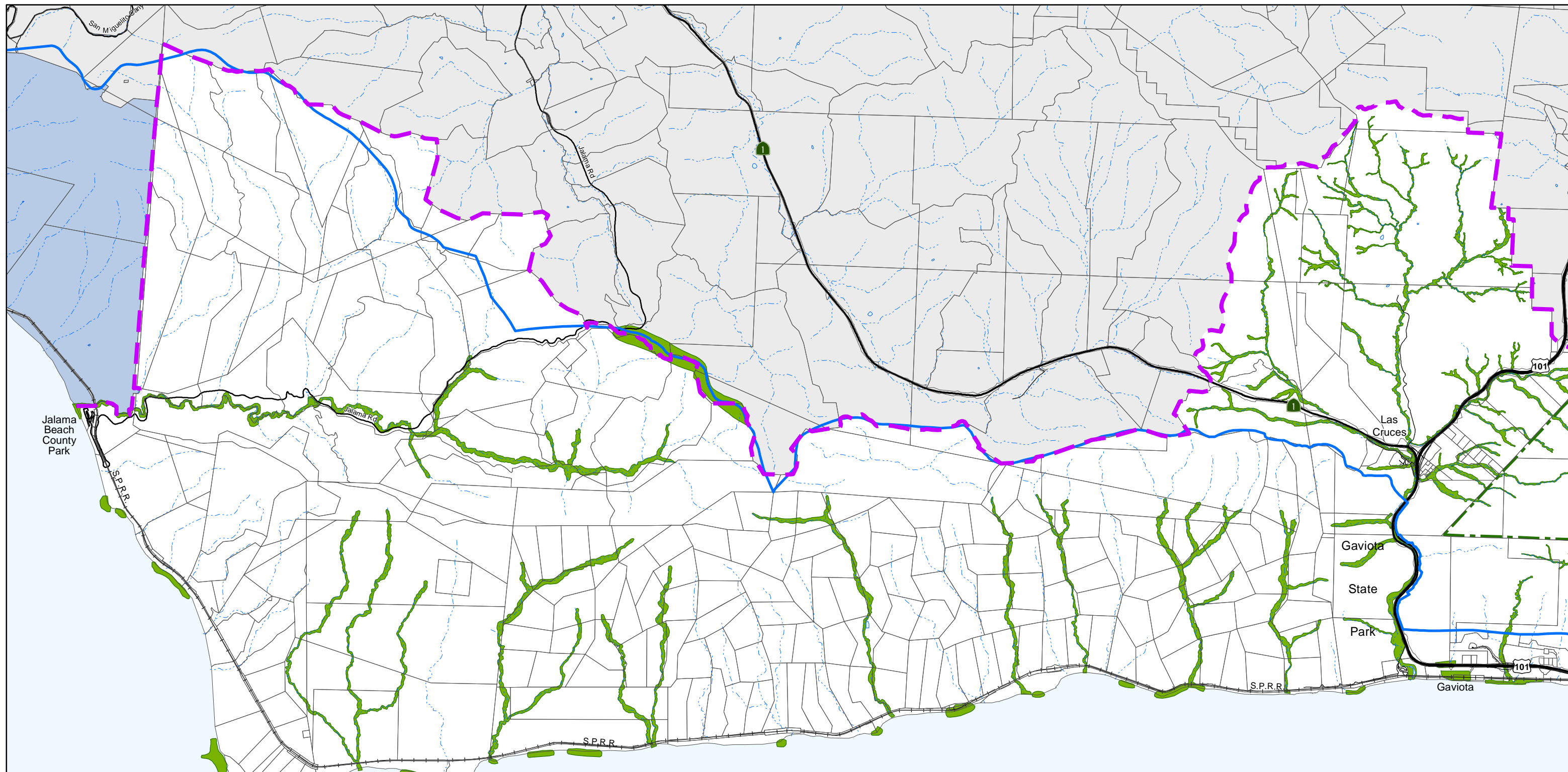


Exhibit 4-A Gaviota Coast Plan Environmentally Sensitive Habitat Land Use and Zoning Overlays



Scale: 1" = 6,000 Feet

- Environmentally Sensitive Habitat Overlay
 - Coastal Zone Boundary
 - Gaviota Coast Plan Boundary
- Los Padres National Forest Boundary
 - Vandenberg Air Force Base

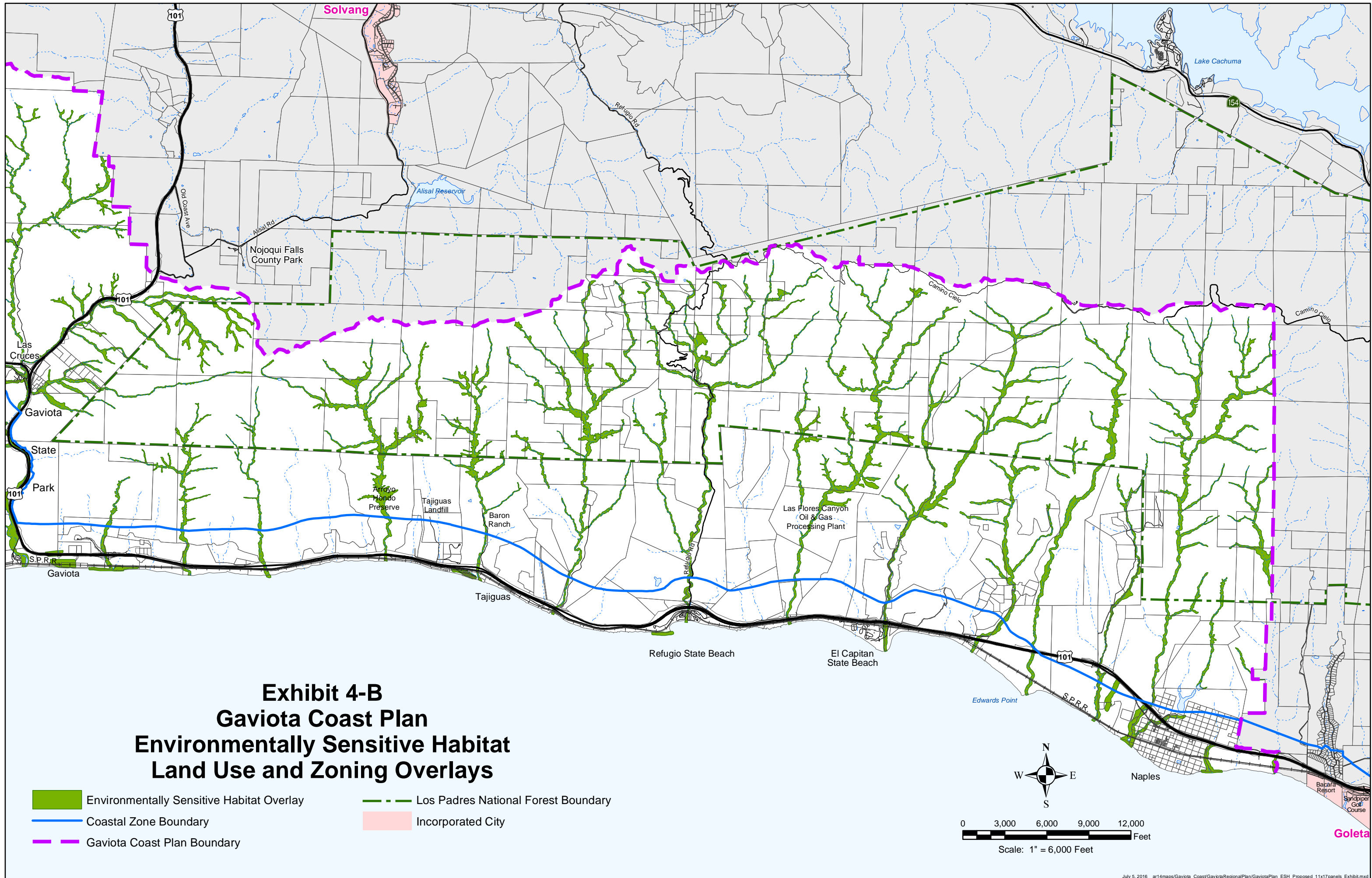
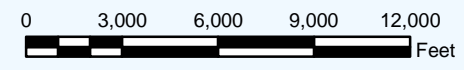
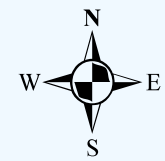


Exhibit 4-B Gaviota Coast Plan Environmentally Sensitive Habitat Land Use and Zoning Overlays

- Environmentally Sensitive Habitat Overlay
- Los Padres National Forest Boundary
- Coastal Zone Boundary
- Incorporated City
- Gaviota Coast Plan Boundary



Scale: 1" = 6,000 Feet

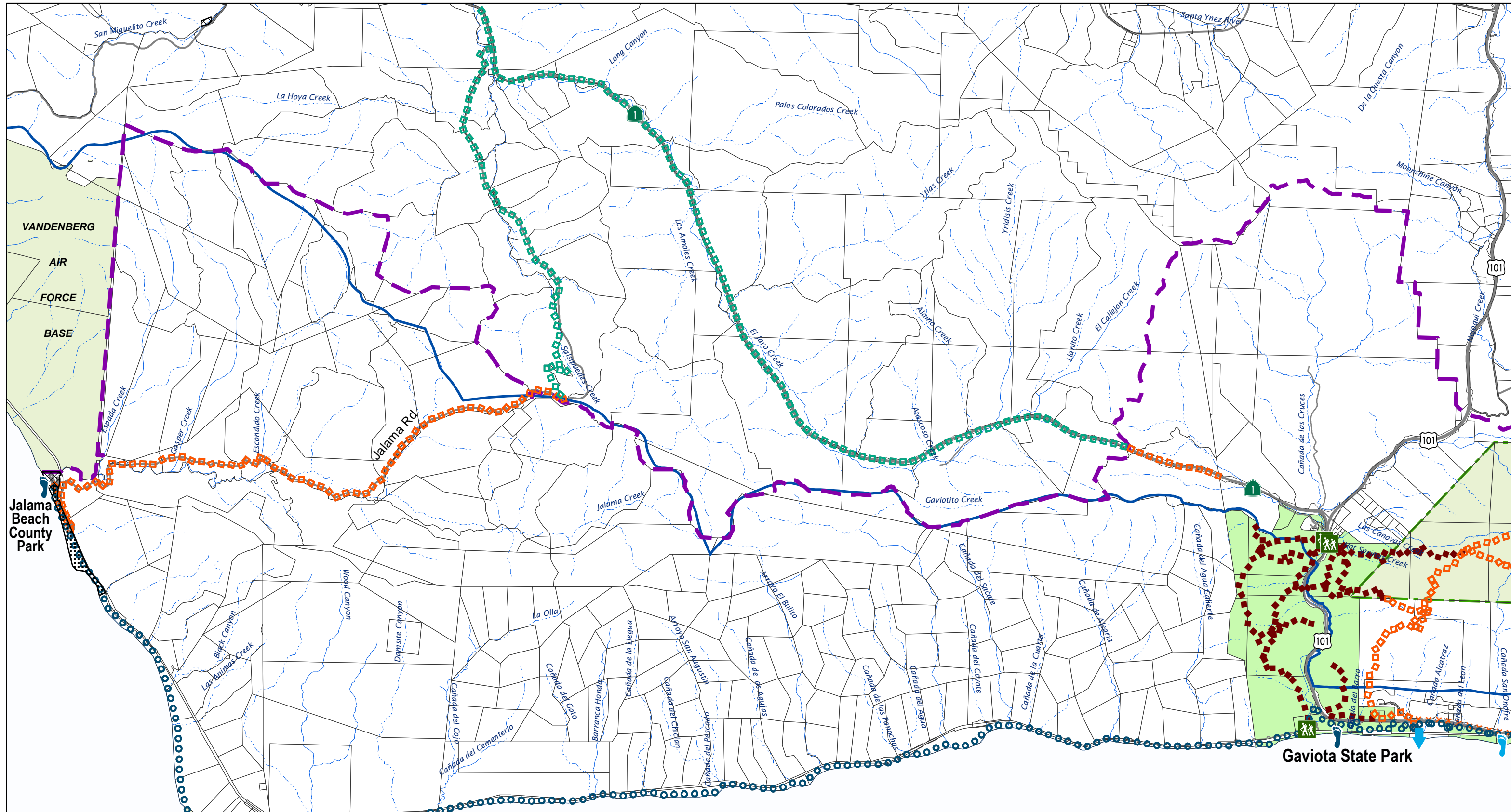


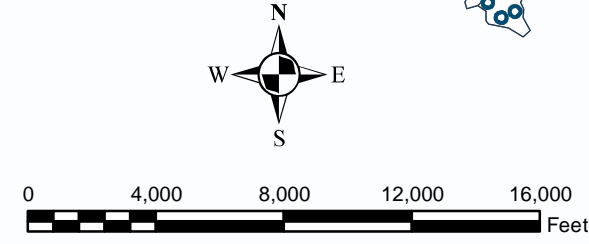
Exhibit 5-A Gaviota Coast Plan - Parks, Recreation & Trails - West

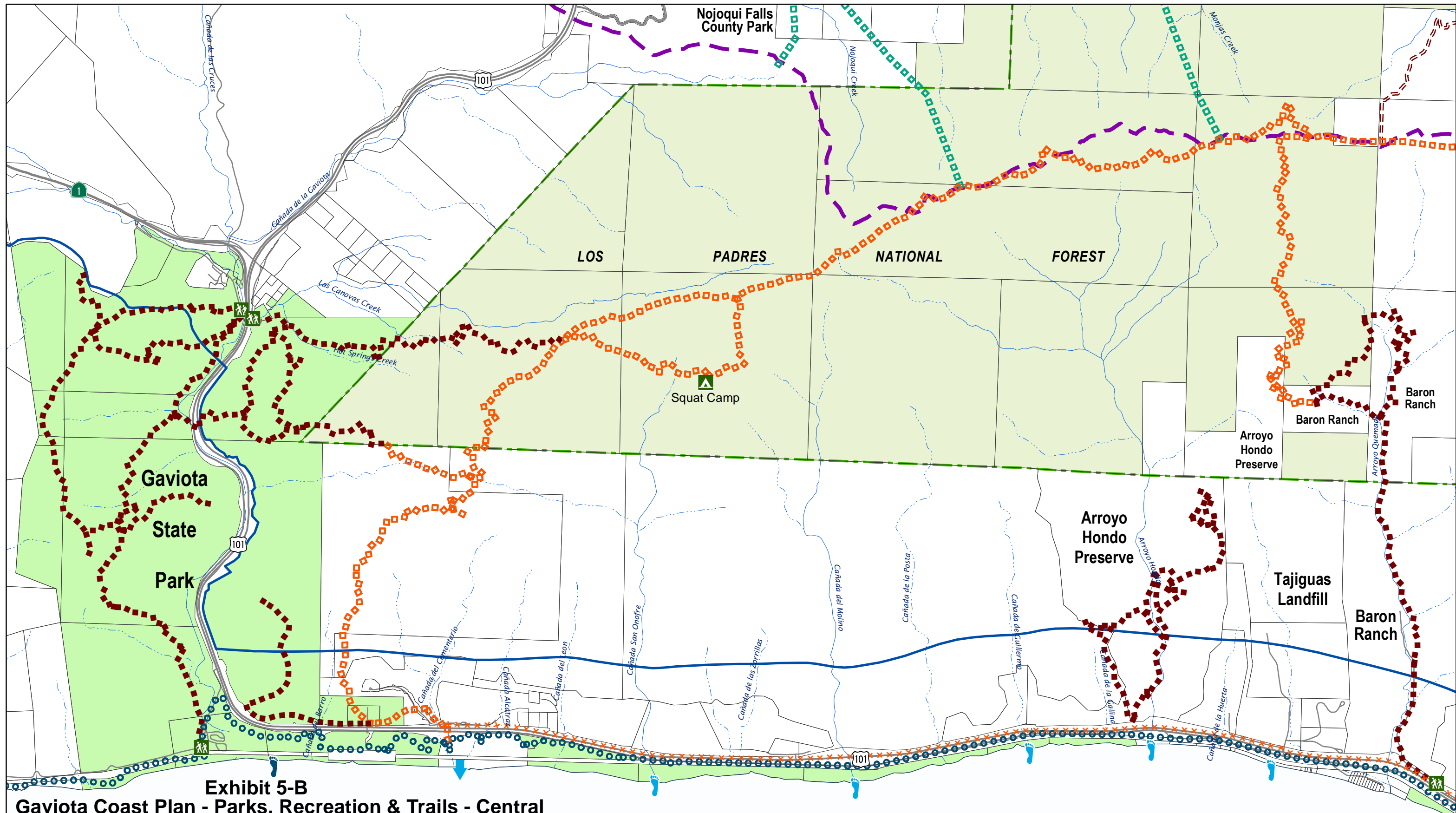
Proposed Trails:

- Proposed Trail on Existing PRT Map Outside Plan Area
- Coastal Trail - Primary Route
- Primary Route
- x x x x Alternate Alignment
- ■ ■ ■ Existing Trail

- Proposed Trailhead
- Proposed Beach Access
- Existing Beach Access (Adopted by Coastal Plan)
- Proposed Beach Access (Adopted by Coastal Plan)

- Existing Park (Adopted by Current PRT)
- Proposed Park (Adopted by Current PRT)
- Gaviota Coast Plan Boundary
- Coastal Zone Boundary
- - - Los Padres National Forest Boundary
- Federal Land
- State Parks and Beaches





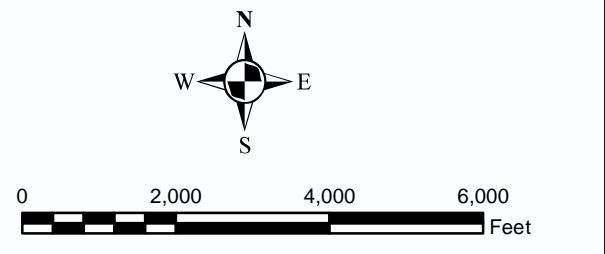
**Exhibit 5-B
Gaviota Coast Plan - Parks, Recreation & Trails - Central**

Proposed Trails:

- Proposed Trail on Existing PRT Map Outside Plan Area
- Coastal Trail - Primary Route
- Primary Route
- ×××× Alternate Alignment
- ■ ■ ■ Existing Trail
- - - - Existing Trail Easement

- ▲ Proposed Trailhead
- ▼ Proposed Beach Access
- ▲ Existing Beach Access (Adopted by Coastal Plan)
- ▲ Proposed Beach Access (Adopted by Coastal Plan)

- - - - Gaviota Coast Plan Boundary
- Coastal Zone Boundary
- - - - Los Padres National Forest Boundary
- Federal Land
- State Parks and Beaches



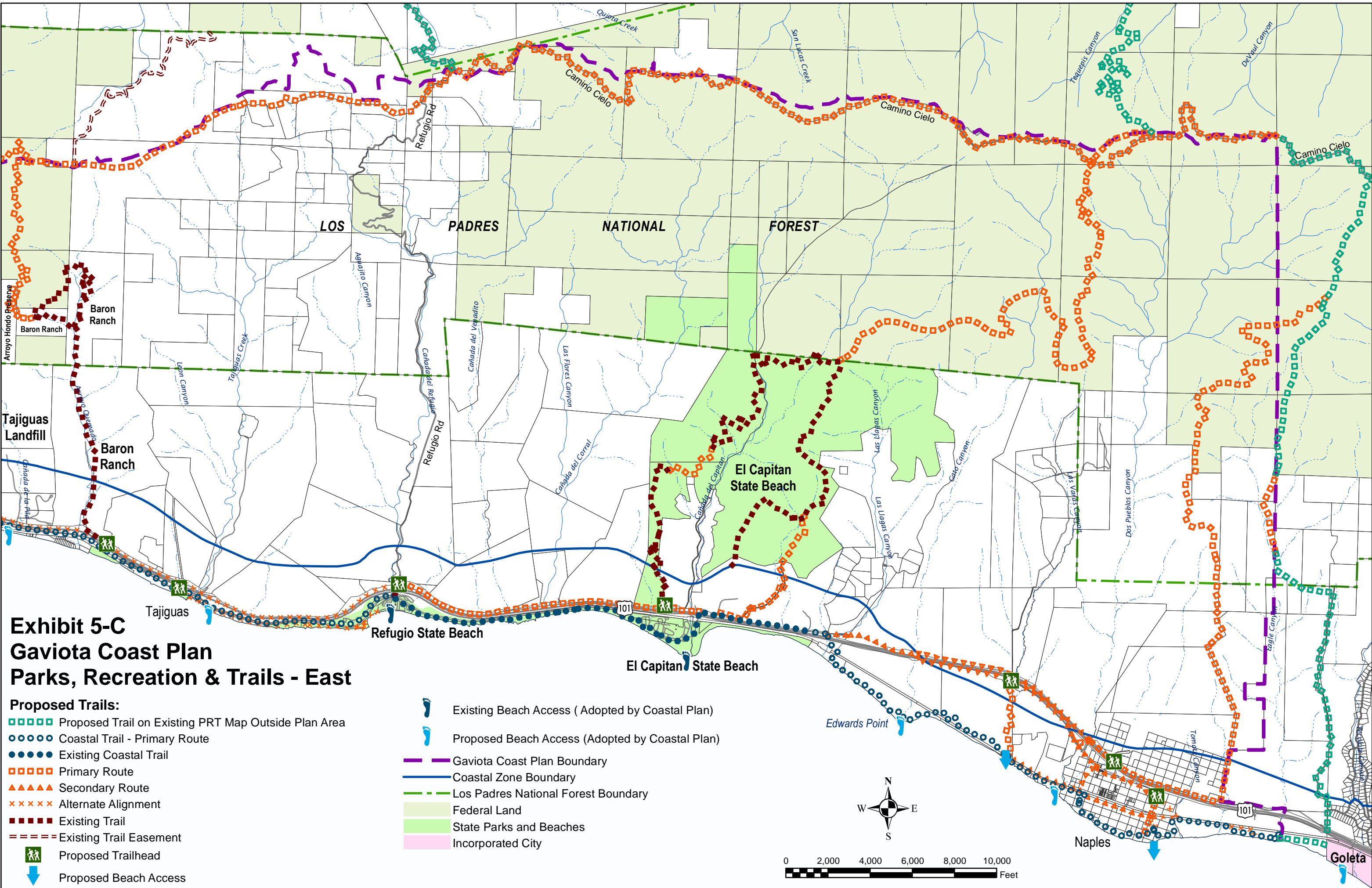


Exhibit 5-C Gaviota Coast Plan Parks, Recreation & Trails - East

Proposed Trails:

- Proposed Trail on Existing PRT Map Outside Plan Area
- Coastal Trail - Primary Route
- Existing Coastal Trail
- Primary Route
- ▲▲▲▲ Secondary Route
- ×××× Alternate Alignment
- ■ ■ ■ Existing Trail
- - - - Existing Trail Easement
- Proposed Trailhead
- ↓ Proposed Beach Access

- ↓ Existing Beach Access (Adopted by Coastal Plan)
- ↓ Proposed Beach Access (Adopted by Coastal Plan)
- - - - Gaviota Coast Plan Boundary
- Coastal Zone Boundary
- - - - Los Padres National Forest Boundary
- Federal Land
- State Parks and Beaches
- Incorporated City

