

The American Recovery & Reinvestment Act

Santa Barbara County
Board of Supervisors
April 21, 2009



COUNTY EXECUTIVE OFFICE

American Reinvestment and Recovery Act of 2009 (ARRA)

**Total California
Funding:
\$86B**
\$35B in Tax Credits
\$51B in Spending



**Total Nationwide
Funding:
\$787B**
\$288B in Tax Credits
\$499B in Spending

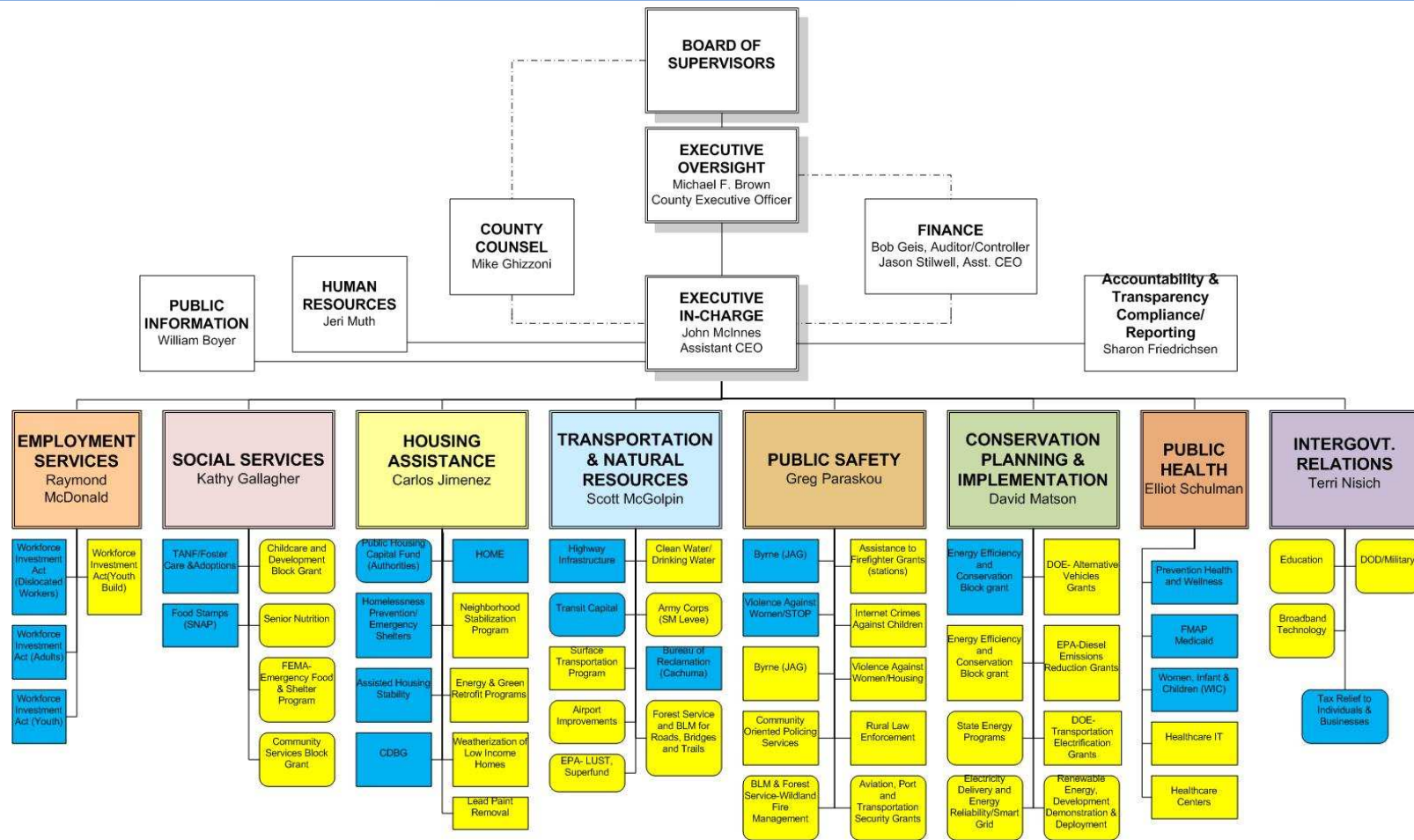
**Total Santa Barbara
County Funding:
\$TBD**

**Cities/Other Regional
Recipients
\$TBD**

**County of Santa
Barbara
\$TBD**



ARRA & Santa Barbara County Economic Recovery Team



Santa Barbara Economic Recovery Information Portal

[Español](#) [A](#) [A](#) [A](#)

COUNTY OF SANTA BARBARA *California*

[Living](#) [Working](#) [Business](#) [Visiting](#) [Government](#)

You are here: Home

Economic Recovery

- Recovery Home
- Search By ARRA Program
- Search By County Project

- Employment Services
- Social Services
- Housing Assistance
- Transportation & Natural Resources
- Public Safety
- Conservation Planning & Implementation
- Public Health
- Inter-Government Relations

Total Nationwide Funding \$787 Billion

County of Santa Barbara \$TBD	
Employment Services	Public Safety
Social Services	Conservation Planning and Implementation
Housing Assistance	Public Health
Transportation and Natural Resources	Intergovernmental Relations

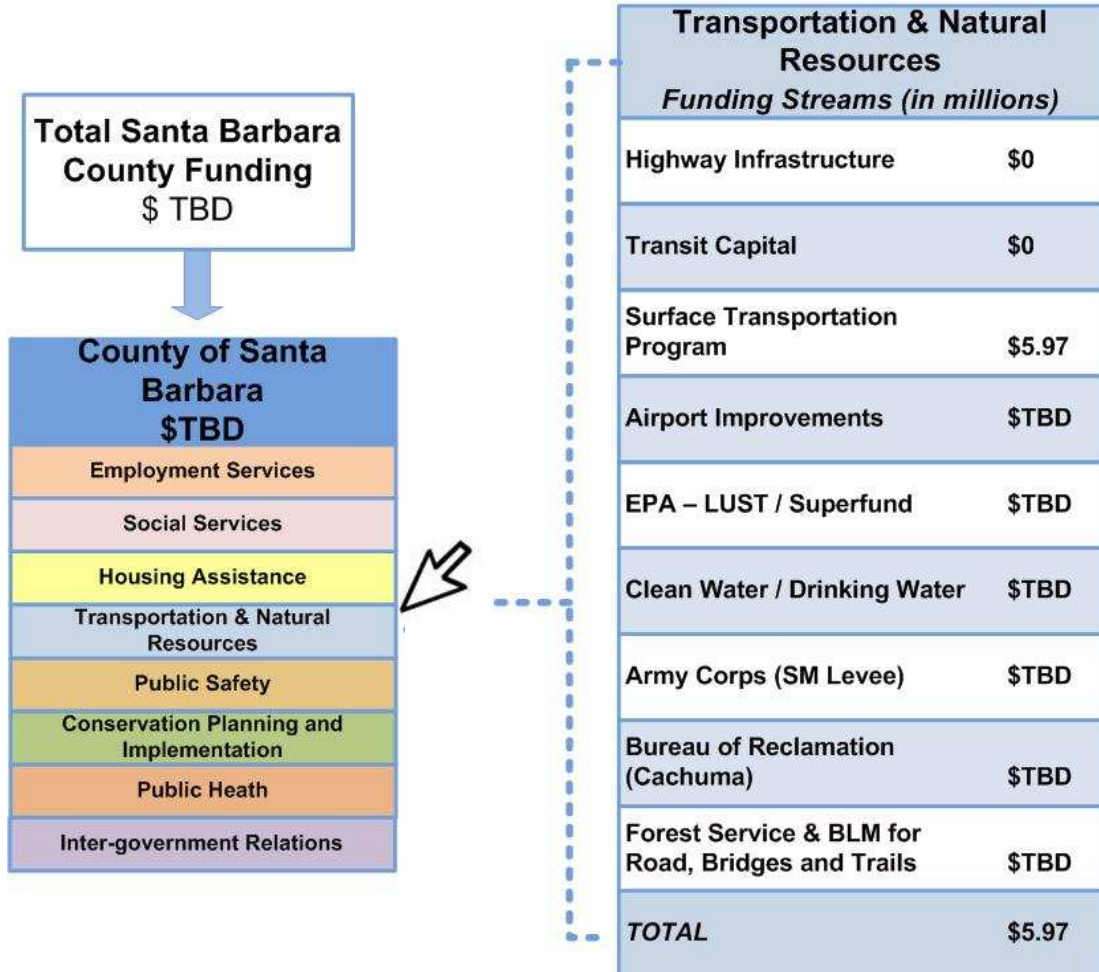
- About ARRA
- News
- FAQ
- Public Input
- Organization
- Related Links
- Contact Us

Santa Barbara County Economic Recovery

Internet



Relational Walk-Through Example: Surface Transportation Program



Relational Walk-Through Example: Surface Transportation Program

Transportation & Natural Resources: Surface Transportation Program

Summary/Purpose of the Program

This program provides funding to enhance, repair, maintain, rebuild and rehabilitate transportation infrastructure.

Funding Methodology

Funding is distributed to the regional Municipal Planning Organization (MPO). The MPO will decide how to distribute funding to its member jurisdictions. No matching funding is required. Priority is to be given to projects in economically distressed areas that can be completed within three years.

Latest Updates

A [press release](#) was distributed March 18, 2009.

Major Deadlines

All funds must be obligated within one year. Funds not obligated will be withdrawn and reapportioned to other states.

Proposed County Projects

See a list of proposed County Projects [HERE](#).

Total Estimated Benefits/Outcomes of Projects Funded Through Program

See the results of the County's IMPLAN ® Economic Modeling software [HERE](#).

IMPLAN ® Results		
Benefit/Outcome	Scale	#\$
Job Creation	County	
	Nation	
Economic Output Impact	County	
	Nation	
Tax Impact	County	
	Nation	



Relational Walk-Through Example: Surface Transportation Program

Surface Transportation Program	
<i>Proposed Projects (in millions)</i>	
2009 ARRA Countywide Road Rehabilitation Project	\$1.73
2009 ARRA Countywide Hardscape Repair Project	\$0.66
2009 ARRA Countywide Minor Bridge Rehabilitation Project	\$0.28
Additional Projects TBD	\$3.30
TOTAL	\$5.97



Relational Walk-Through Example: Surface Transportation Program

Proposed County Project: 2009 Countywide Road Rehabilitation Project

Project Description

Roadway rehabilitation on various streets throughout the County, including failed area repairs, leveling asphalt, Stress-Absorbing Membrane Interlayers, and asphalt overlays.

Project Budget


	Total	2009	2010	2011	2012
Project Budget by Year	\$1.73	\$1.73	0	0	0

Amount funded by Recovery Act: \$1.73 million (100%)


Project Schedule

March 2009 – February 2010

Application

See the County's application for funding for this project [HERE.](#)  [Link to Form](#)

Reporting/Compliance

See the County's continuous reporting on the project [HERE.](#)  [Link](#)

Estimated Benefits/Outcomes of Project

See the results of the County's IMPLAN @ Economic Modeling software [HERE.](#) 

IMPLAN @ Results		
Benefit/Outcome	Scale	#/\$
Job Creation	County	22.7
	Nation	36.4
Economic Output Impact	County	\$2,817,795
	Nation	\$4,931,724
Tax Impact	County	\$370,148
	Nation	\$585,545



What Do We Know Now?

Total: \$18.08M received to date

Health Care Centers \$0.21 million	Surface Transportation Program \$5.97 million				TBD TANF/Foster Care & Adoption	Food Stamps - SNAP \$0.19 million	Workforce Investment Act (Adults) \$0.60 million	Workforce Investment Act (Youth) \$1.93 million	Homelessness Prevention/ Emergency Shelters \$0.83 million	CDBG \$0.54 million
					TBD Assisted Housing Stability	FMAP Medicaid \$2.80 million	Workforce Investment Act (Dislocated Workers) \$1.17 million	Highway Infrastructure \$0 million	Bryne (JAG) \$0.14 million	Bureau of Reclamation (Cachuma) \$3.70 million
					TBD State Energy Program	TBD Prevention Health & Wellness	TBD Women, Infants, and Children (WIC)	TBD Violence Against Women - STOP	\$0 Public Housing Capital Fund	\$0 Transit Capital
									\$0 HOME	\$0 EECBG



The Next 30 Days

- Tracking funding streams as guidelines continue to be announced
- Identifying eligible projects and applying for grants
- Quantifying economic impacts of funded programs and projects
- Maintaining the database and adding content to the webpage
- Presenting status report to the Board on May 21, 2009



Questions?



COUNTY EXECUTIVE OFFICE