



GCP

GOVERNMENT CONSULTING PARTNERS, INC.

Santa Barbara County

FIRE DEPARTMENT

USER FEE STUDY: April 10, 2026

TABLE OF CONTENTS

01 BACKGROUND AND OBJECTIVES

Background.....	1
Legal Framework for User Fees.....	1
Study Objectives.....	1

02 APPROACH AND METHODOLOGY

Fee Structure Review Process.....	3
Methodology.....	3

03 FISCAL IMPACT

Study Results.....	7
--------------------	---

04 ANALYSIS OVERVIEW

Land Development Fees.....	8
Operational Permit Fees.....	9
Occupancy Inspection Fees.....	10
Miscellaneous Fees.....	10

05 COMPARISON SURVEY 11

06 RECOMMENDATIONS..... 11

APPENDIX A:

Individual Fee Recommendations.....	13
-------------------------------------	----

APPENDIX B:

Comparison Survey Results.....	26
--------------------------------	----

USER FEE STUDY:

SANTA BARBARA COUNTY FIRE DEPARTMENT

01 BACKGROUND & OBJECTIVES

BACKGROUND

The Santa Barbara County Fire Department (SBCFD), through the Office of the Fire Marshal, is responsible for protecting life, property, and the environment through fire prevention, planning and engineering review, inspections, investigations, code enforcement, training, and public education. These services ensure that development projects, commercial operations, residential occupancies, and specialized activities comply with adopted fire and life safety codes.

As more fiscal limitations are imposed on local government, user fees have become an important source of revenue. A user fee is a payment made by an individual or private party for a service that primarily benefits the individual or private party. Public agencies can impose a user fee for a service when 1) the individual or private party's decision to use the service is voluntary, and 2) the fee charged to an individual or private party user is reasonably related to the level of service rendered and the cost of providing that service.

The land development, sprinkler and alarm, and construction permit fees were last comprehensively reviewed in 2006 and 2016. Occupancy, operational, and miscellaneous fees have not been updated since 2009. Since the last update, additional staff, Safety and civilian, with associated expenses, have been added to address inspection workload and complexity. Those updates resulted in additional staffing costs, operating expenses, in addition to regulatory requirements, and service delivery responsibilities, have increased costs substantially for SBCFD. The department engaged Government Consulting Partners, Inc. (GCP) to conduct a comprehensive user fee study so that it could align its fees for service to the cost of providing these services.

LEGAL FRAMEWORK FOR USER FEES

User fees in California are required to conform to the statutory requirements of the California Constitution, Proposition 218 (1996), and the California Code of Regulations, including Government Code 66000 et seq. By law, user fees may not exceed the estimated reasonable cost of providing the services for which they are levied, unless approved by a two-thirds vote of the electorate. Proposition 218 ensures user fees are fair, transparent, and directly connected to the actual cost of the service provided.

STUDY OBJECTIVES

The user fee study was performed under the general direction of the department's Fire Marshal-Division Chief, Fire Battalion Chief, Fire Captain - Investigation Services, Fire Captain - Planning and

USER FEE STUDY:

SANTA BARBARA COUNTY FIRE DEPARTMENT

Engineering, and the Chief Financial and Administrative Officer. GCP's primary objective in this study was to:

- Align fees to the cost of the services being provided.
- Identify fees that should be added to the fee schedule.
- Analyze all costs and determine whether they are being appropriately recovered.
- Enhance fee transparency.

The purpose of this user fee study is to evaluate the estimated reasonable cost of providing services to the SBCFD customers and recommend adjustments to existing fees needed to maintain fiscal sustainability. This report advocates the development of a fee structure that is transparent and compliant with applicable legal requirements, while promoting sound fiscal policy and responsible cost recovery practices.

This report presents GCP's comprehensive review of SBCFD user fees with the goal of aligning fee structures and amounts with Board priorities and fiscal policy. The County's priorities and objectives for this project include the following components:

- Restructure fees as necessary in order to better align with the services being provided
- Calculate the full cost of each service
- Propose appropriate fee levels for individual services based on cost analysis and other relevant factors
- Provide recommendations for cost recovery approaches and fee setting best practices, with consideration for the unique operational demands of the department.

The proposed fee schedule adds new fee categories, eliminates others, and modifies certain categories to either increase user-friendliness or better reflect how services are provided by the department.

The overall goal of this report is to present the study's findings in a concise, focused format that allows the County's decision-makers to make informed pricing decisions.

02 Approach & Methodology

Upon project commencement GCP met with the Fire Marshal-Division Chief, Fire Battalion Chief, Fire Captain - Investigation Services, Fire Captain - Planning and Engineering, and the Chief Financial and Administrative Officer to better understand the goals and priorities for the new fee schedule. A workplan was then developed to ensure that the proposed fee schedule resulting from the study reflected those priorities.

USER FEE STUDY:

SANTA BARBARA COUNTY FIRE DEPARTMENT

FEE SCHEDULE STRUCTURE REVIEW PROCESS

A key component of the workplan for the SBCFD fees included evaluating the existing fee structure and modifying it where necessary so that it aligns with the services being provided. Every proposed change either streamlines the fee calculation process, aligns with the County's Fire Code, improves customer experience, or otherwise furthers the department's objectives for the fee schedule.

As part of the restructuring process several factors were considered including:

- **Reflect Modern Structure** - Over time, best-practice fee structures evolve as industries change and as customers demand and expectations shift.
- **Transparent** - Restructuring the fee schedule enhances transparency by clearly linking each fee to its corresponding service, making it easier for users to understand the cost structure and review the process behind it.
- **Aligns with the Services Provided** - Overtime, the services provided by SBCFD may change and fees may need to be removed, added or modified on the fee schedule so that they align with the work being performed.

METHODOLOGY

Fees in this study were calculated via a per-unit analysis approach. Also called a "bottom-up" approach, this method analyzes the direct staff time required to deliver one unit of service. Fully burdened rates are then applied to reflect services and supplies, administrative costs and overhead required to deliver each service, resulting in a detailed per-unit cost assessment.

The per-unit methodology includes the following five steps to build the individual per unit costs:

1. Define the fees to be analyzed
2. Time spent on the fee-related service
3. Develop fully burdened hourly rate
4. Compare total costs to the current fee schedule
5. Annual revenue projections

1. Define the fees to be analyzed

GCP worked with staff to identify any fee structure changes, new fees or fee removals in order to establish a list of the fees to be analyzed.

2. Time spent on the fee-related service

Once all fee structure decisions were finalized, the County's subject matter experts provided average reasonable time estimates for the various fee types.

USER FEE STUDY:

SANTA BARBARA COUNTY FIRE DEPARTMENT

3. Develop fully burdened hourly rates (FBHR)

The current hourly rates for SBCFD have not been kept pace with growing inflation and changes in labor and supply costs thus creating a large gap between the fees and the cost of services being provided. One of the contributing factors for this is that SBCFD added an additional section within the Fire Prevention Division.

Establishing FBHR is essential to any user fee study engagement because they lay the foundation to calculating the true cost of providing services. FBHR can be used to determine how much it costs to deliver any labor-based service. Reliable FBHR ensure the study's findings and recommendations and resulting fee schedules are based on real, defensible costs. This promotes both financial sustainability and transparency.

Step A - Calculate Annual Cost of Direct Staff: The FBHR calculation process incorporated data from the following sources:

- **Staffing costs** were calculated using the County's budgeted compensation data, including salaries and benefits, for employees with the SBCFD Fire Prevention division.
- **Operating costs** directly associated with service delivery—such as materials and supplies were incorporated into the fully burdened rate to ensure a comprehensive reflection of total service costs.
- **Overhead costs** from the Fire Prevention division's indirect costs and the departmental indirect cost rate (ICRP) were applied to the direct salary and benefit expenses to calculate the fully burdened hourly rates.
 - *Division overhead:* Division overhead includes indirect costs such as labor services and supply costs from program formerly 6010 Prevention Administration, now updated to program number 6020, that is not included in the department ICRP and other service and supply costs from program 6022 Inspection Services, 6023 Planning and Engineering and 6024 Vegetation Management.
 - *Department ICRP overhead:* Department ICRP overhead includes indirect costs from the department and the County's central services, such as the County Executive, County Counsel, Auditor-Controller and Procurement, that are allocated to the department through the county's cost allocation plan.

Step B - Identify Annual Available Work Hours per FTE: Available work hours become the denominator in the rate. Conceptually, the idea is to reflect the average number of hours in a year that an FTE is typically available to deliver services. By including only available work hours

USER FEE STUDY:

SANTA BARBARA COUNTY FIRE DEPARTMENT

in the denominator, instead of the traditional 2,080, the rates are “fully burdened” sufficient to recover the full annual cost of one FTE, assuming normal service demand levels.

Since the division has both sworn safety members and civilian staff, two different average available hours were calculated and then a weighted average was determined. The average available hours accounts for the reduction of the average holiday, sick, and vacation hours, but sworn safety members also include the average annual training hours. The chart below shows the average productive hours used:

- Sworn Safety Members: 1,725 hours
- Civilian: 1,780 hours

Division	Total Productive Hours	Total Direct Staff	Avg. Productive Hours
Inspection Services/Oil and Gas / Investigations Unit (Enforcement Duties)	12,240	7	1749
Planning and Engineering	12,295	7	1756
Vegetation Management*	8,735	5	1747
Avg. Productive Hours	33,270	19	1751

* Does not include extra help or part time staff

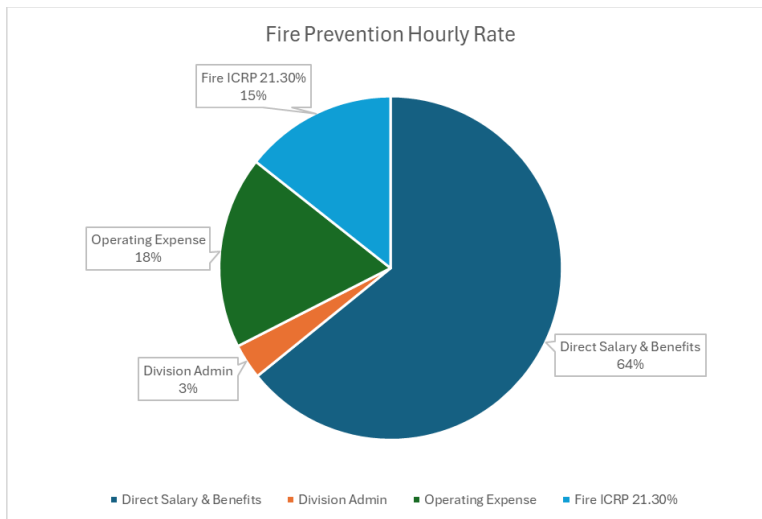
Table 1 Average Productive Hours Available

FBHR Calculation:

The FBHR was calculated by adding line-staff salaries and benefits, divisional administrative costs and operating expenditures, incorporating the department ICRP that was then divided by the annual available/direct hours per year to produce an hourly rate that reflects the total cost required to deliver the Fire Prevention services. The breakdown for this calculation is presented in Table 2 below.

USER FEE STUDY:

SANTA BARBARA COUNTY FIRE DEPARTMENT



Fire Prevention Staff	
Direct Salary & Benefits	\$ 4,096,327.00
Division Admin	\$ 212,195.40
Operating Expense	\$1,156,820
Fire ICRP 21.30%	\$917,715
	<hr/>
	\$ 6,383,057.67
Total Direct Hours Available	33,270.00
Fully Burdened Hourly Rate	\$ 191.86

Table 2 Fully Burdened Hourly Rate

4. Compare total costs to the current fee schedule

Once the fully burdened hourly rate is applied to the time estimates, this creates the “total cost” per unit for fixed fees and an hourly rate to be charged for the per hour fees. GCP compared the total cost for each fixed fee-related service to the fee currently charged.

If the current cost recovery for a particular service is under 100%, this implies the fee does not cover the cost of providing the service and should be increased. If the current cost recovery is over 100%, then the fee is set too high and must be lowered to comply with State laws prohibiting the making of a profit on user fee activities.

5. Annual Revenue Projections

GCP projected the annual fiscal impact for the division by multiplying current and proposed fees by annual demand figures. Demand figures were estimated based on the following assumptions:

- In this case, FY 2024/25 demand is the best predictor of short-term demand for each service.
- Estimates are used for any restructured fee categories.
- Per hour fees are often difficult to predict. These fees are seen as revenue neutral since they are based on the actual time spent multiplied by the hourly rate and therefore are assumed to be 100% cost recovery.

USER FEE STUDY:

SANTA BARBARA COUNTY FIRE DEPARTMENT

03 FISCAL IMPACT

STUDY RESULTS

The User fee fiscal impact presents the key financial results, including cost-of-service calculations, current cost recovery rates, and anticipated changes in revenue based on proposed fee updates. In cooperation with Fire Prevention staff, GCP developed cost and revenue projections for each area under study. Costs and revenues were primarily projected by extrapolating individual per-unit results for an entire year of demand activity. Our findings show an overall \$547,191 net revenue increase on an annual basis, assuming historic demand levels. The table below summarizes the fiscal impact of our findings and recommendations for each fee area under study.

Fee Service Area	Total Costs, User Fee Services	Current Revenue (Based on FY 24-25 Volume)	Proposed Fee Revenue	Increased Revenue
Fire Prevention	\$932,528	\$385,337 41%	\$932,528 100%	\$547,191

Table 3: Fee Service Cost Recovery Rates and Revenues

Due to some fee restructuring and fluctuations within the construction cycle for the Land Development fees within Fire Prevention, this study’s fiscal projections are approximations and should be approached conservatively. GCP recommends that SBCFD monitor actual fiscal impacts beginning with the first six months of actual revenue data to ensure the fees are performing the way that they are intended to. In addition, the department is recommending conducting a follow-up fee study after twelve (12) months of implementation of the new fees to evaluate actual revenues and expenditures.

04 ANALYSIS OVERVIEW

GCP worked with the subject matter experts on the analysis of the following fees: land development, sprinklers and fire alarms, miscellaneous, operational permits, and occupancy inspections. This section details the recommended adjustments to the fee schedule, such as eliminating outdated fees, introducing new ones, and combining similar charges to enhance transparency and consistency. It outlines the final recommended fee structure customized to align with actual service costs and supports department’s broader fiscal objectives. The full list of the proposed fees can be found in Appendix A of this report.

USER FEE STUDY:

SANTA BARBARA COUNTY FIRE DEPARTMENT

LAND DEVELOPMENT FEES

The land development fees have undergone significant changes since the last fee study was adopted in 2009. GCP worked with the Planning and Engineering staff in order to align the fees to the County and State codes and to the services being provided.

The land development fees can be broken down into three categories:

- **Fixed fees** are assigned to fee categories that typically require a consistent level of effort.
- **Per Hour** fees are charged when the service requires a varying level of effort and ensures fairness in a fee's application. The service is based on the division's hourly rate.
- **Actual Cost-plus Admin fee** assigns the cost incurred from utilizing a third party to perform the service. The administrative fee is assessed to cover the time spent by the County to both administer the contract, coordinate with the third party and evaluate and ensure the work was performed to the county's requirements.

The new fee structure for the land development fees includes:

New fixed fees such as:

- Land Use Permit
- Cannabis Land Use Permit
- Agricultural Enterprise Ordinance
- Miscellaneous Land Use or Zoning Review

Fixed fee updates include:

- Fire Protection Certificate - Minor
- Fire Protection Certificate - Major
- Residential Fire Sprinklers
- Commercial Fire Sprinklers

Sprinkler and Fire Alarms

The current structure for the sprinklers and fire alarm fees underwent a significant restructure. The new fee structure, sprinklers and fire alarms contains 10 fees, 9 of which are fixed fees or incremental fees and one per hour rate. The proposed fee highlights include:

Residential Sprinkler Systems

The current fee for a residential sprinkler system has unlimited square footage and is \$232. GCP's analysis shows that the average cost to provide this service for a NFPA13D system or an NFPA 13R system for a home between 1 - 5,000 sq ft is \$815. The current fee is recovering 28% of what it is actually

USER FEE STUDY:

SANTA BARBARA COUNTY FIRE DEPARTMENT

costing to provide this service leaving the remaining 72% unrecovered. The proposed new residential fire sprinkler system structure includes three fees:

- Residential fire sprinklers NFPA13D system \$815
- Residential fire sprinkler NFPA 13R system 1 - 5,000 sq ft \$815
- Residential fire sprinkler NFPA 13R system - Every additional 5,000 sq ft \$192

Commercial Sprinkler Systems

The current fee structure for a commercial sprinkler system is not reflective of the average square footage or average time spent. The current commercial sprinkler system fee structure is listed below:

- Commercial sprinkler system under 52,000 sq ft \$509
- Commercial sprinkler system 52,001-104,000 sq ft \$694
- Commercial sprinkler system 104,001 - 156,000 sq ft \$879

The new fee structure provides a better nexus to the average time spent.

- Commercial fire sprinkler NFPA 13 system 1 - 10,000 sq ft \$1,439
- Commercial fire sprinkler NFPA 13 system - Every additional 10,000 sq ft \$480

OPERATIONAL PERMIT FEES

The proposed Operational Permit fee schedule has been restructured to better align with the new and/or current permit types and processes. The proposed fee structure consists of mostly fixed fees and some hourly rate based fees, some of which SBCFD was not charging a fees for but allotted significant staff time towards.

The proposed operational permit fee changes include but are not limited to:

New fixed fees such as:

- Energy Storage Systems
- Indoor Plant Cultivation
- Motor Fuel Dispensing Facilities
- Mobile Fueling of Hydrogen-Fueled Vehicles

Updates to fixed fees to account for actual time spent include:

- Places of Assembly
- Outdoor Assembly Event
- Agricultural Burning Permit
- Hot Work Operations

USER FEE STUDY:

SANTA BARBARA COUNTY FIRE DEPARTMENT

OCCUPANCY INSPECTION FEES

The proposed Occupancy Inspection fee schedule has been restructured to better align with the new and/or current occupancy types and high hazard activities with them. The proposed fee structure consists of mostly fixed fees and some hourly rate based fees, some of which SBCFD was unable to charge fees for but allotted significant staff time towards.

The proposed Occupancy Inspection fee changes include but are not limited to:

New fixed fees such as:

- Group R-1 Occupancies - Hotels
- Group R-2 Occupancies - Large Multi-Family Dwelling Units
- Group I Occupancies - Institutional
- Group L Occupancies - Laboratories

Updates to fixed fees to account for actual time spent include:

- Code Enforcement Fee
- Release of Stop Work Order
- Licensed Care Facilities

MISCELLANEOUS FEES

The proposed Miscellaneous Inspection fee schedule has been added to better align with the new occupancy types and/or activities with them. The proposed fee structure consists of mostly fixed fees and some hourly rate based fees, some of which SBCFD was unable to charge fees for but allotted significant staff time towards.

The proposed Miscellaneous Inspection fee additions or changes include but are not limited to:

New fixed fees such as:

- Zoning Clearance Fee
- Reinspection Fee
- Film Application Review
- Film Standby

Film Fees

Four new film fees are being proposed:

- Film Review
- Film Application Review (without required inspection)
- Film (Stand by)

USER FEE STUDY:

SANTA BARBARA COUNTY FIRE DEPARTMENT

- Film Permit Inspection / Spot Check

Film services that are not covered by the four proposed fees will be billed at a per hour rate.

05 COMPARISON SURVEY RESULTS

The purpose of conducting a user fee comparison survey is to benchmark the County's current fees against those charged by neighboring or comparable jurisdictions. This analysis provides valuable context for evaluating the competitiveness, consistency, and reasonableness of existing or proposed fees. While fee setting should primarily reflect the actual cost of service, comparative data can inform policy decisions by highlighting regional trends, identifying potential outliers, and supporting transparent, defensible adjustments.

GCP surveyed regional agencies to determine what they charge for a variety of Fire Prevention fees.

Key considerations when reviewing comparison survey results:

- **Service Costs Vary** - Differences in staffing, operations, and overhead means fees aren't always directly comparable.
- **Policy Choices Matter** - Some agencies keep fees low by subsidizing them to support access or other goals.
- **Different Services** - Fees may reflect different levels or types of service, even if the name is the same.
- **Compliance** - Fees must reflect the actual costs to stay legally compliant, regardless of what others charge.

Comparison survey results can be found in Appendix B of this report.

06 RECOMMENDATIONS

With such major restructuring of the Fire Prevention fees, GCP recommends the following:

1. GCP recommends adoption of the proposed fees.
2. SBCFD should seek a full cost recovery policy.
3. SBCFD should continue to update the fees in the off years by the regional CPI factor (Consumer Price Index for All Urban Consumers (CPI-U) for Los Angeles-Long Beach-Anaheim) and/or employment cost index (ECI) factor, whichever is greater.
4. SBCFD should update fees on July 1 of each year based on the previous calendar year's index.

USER FEE STUDY:

SANTA BARBARA COUNTY FIRE DEPARTMENT

5. Due to the extent of the restructuring of the division's fees, GCP recommends monitoring both the time spent and revenue generated and performing a check at both six months and one year to ensure that the restructured fees are performing the way they are intended too.
6. GCP recommends that the division undertake a detailed analysis at least every three to five years, with minor adjustments in the non-study years to keep pace with economic factors.

USER FEE STUDY:

SANTA BARBARA COUNTY FIRE DEPARTMENT

APPENDIX A

Santa Barbara County - 2025-2026								
Fire Prevention - 2000 (6010/6022/6023/6024)				PER UNIT ANALYSIS				
FY 2025-2026								
Fee #	Fee Name	Current Fee	Fee Description	Cost Per Unit	Current Cost Recovery %	Proposed Cost Recovery %	Proposed Fee	
LAND DEVELOPMENT FEES								
1	Conditional Certificate of Compliance	\$312	Fixed Fee	\$480	65%	100%	\$480	Fixed Fee
2	Land Use Permit (up to 2 hrs.)	\$0	Fixed Fee (includes up to 2 hours; hourly rate thereafter)	\$384	0%	100%	\$384	Fixed Fee (includes up to 2 hours; hourly rate thereafter)
3	Cannabis Land Use Permit	\$0	Fixed Fee	\$576	0%	100%	\$576	Fixed Fee
4	Agriculture Enterprise Ordinance	\$0	Fixed Fee	\$384	0%	100%	\$384	Fixed Fee
6	Conditional Use Permits: Major (New or Revised)	\$519	Fixed Fee	\$1,535	34%	100%	\$1,535	Fixed Fee
7	Conditional Use Permits: Minor (New or Revised)	\$103	Fixed Fee	\$288	36%	100%	\$288	Fixed Fee
8	Conditional Use Permits: Cannabis	\$0	Fixed Fee	\$959	0%	100%	\$959	Fixed Fee
9	Development Plans: (New or Revised)	\$1,247	Fixed Fee	\$2,494	50%	100%	\$2,494	Fixed Fee
10	Development Plans: Any Fire Hazard Severity Zone in the SRA or LRA (all land use review)	\$0	Fixed Fee	\$192	0%	100%	\$192	Fixed Fee
11	Maps: Lot Line Adjustment	\$208	Fixed Fee	\$480	43%	100%	\$480	Fixed Fee
12	Maps: Tentative Parcel Map	\$1,247	Fixed Fee	\$1,151	108%	100%	\$1,151	Fixed Fee

USER FEE STUDY:

SANTA BARBARA COUNTY FIRE DEPARTMENT

Santa Barbara County - 2025-2026								
Fire Prevention - 2000 (6010/6022/6023/6024)			PER UNIT ANALYSIS					
FY 2025-2026								
Fee #	Fee Name	Current Fee	Fee Description	Cost Per Unit	Current Cost Recovery %	Proposed Cost Recovery %	Proposed Fee	
13	Maps: Tract Map - (5-50 Lots)	\$1,247	Fixed Fee	\$2,110	59%	100%	\$2,110	Fixed Fee
14	Maps: Tract Map - Each additional 25 lots above initial 50 lots	\$0	Each additional 25 lots above initial 50 lots	\$2,110	0%	100%	\$2,110	Each additional 25 lots above initial 50 lots
15	Maps: Road Naming New or Rename	\$208	Fixed Fee	\$288	72%	100%	\$288	Fixed Fee
16	Discretionary Follow-up Permits: Parcel Map/Lot Line Adjustment Clearance	\$103	Fixed Fee	\$384	27%	100%	\$384	Fixed Fee
17	Discretionary Follow-up Permits: Map Clearance	\$103	Fixed Fee	\$384	27%	100%	\$384	Fixed Fee
18	Pre-Application (PRE) Planning Review	\$0	Fixed Fee	\$384	0%	100%	\$384	Fixed Fee
19	Miscellaneous Land Use or Zoning Review	\$0	Per Hour	\$192	0%	100%	\$192	Per Hour
20	Miscellaneous Fire Permit Review	\$0	Per Hour	\$192	0%	100%	\$192	Per Hour
21	Deferred Submittal Plan Review for Planning Projects	\$0	Fixed Fee	\$576	0%	100%	\$576	Fixed Fee
22	Request Modification, Alternative Materials, Design, and Methods	\$0	Hourly Rate (2 hour minimum); hourly thereafter	\$384	0%	100%	\$384	Hourly Rate (2 hour minimum); hourly thereafter
23	Fire Protection Certificate (FPC) Permit - Major	\$536	Fixed Fee	\$1,151	47%	100%	\$1,151	Fixed Fee
24	Fire Protection Certificate (FPC) Permit - Minor	\$536	Fixed Fee	\$576	93%	100%	\$576	Fixed Fee
25	Additional address fee over 5	\$45	Each additional 10 addresses over initial 5	\$96	47%	100%	\$96	Each additional 10 addresses over initial 5
26	Addressing issuing (1-5) without FPC	\$0	Fixed Fee	\$192	0%	100%	\$192	Fixed Fee
27	FPC: H Occupancy Review	\$0	Fixed Fee (in addition to the FPC fee)	\$576	0%	100%	\$576	Fixed Fee (in addition to the FPC fee)
28	FPC: High Piled Storage Plan Review	\$0	Fixed Fee	\$576	0%	100%	\$576	Fixed Fee

USER FEE STUDY:

SANTA BARBARA COUNTY FIRE DEPARTMENT

Santa Barbara County - 2025-2026

Fire Prevention - 2000

(6010/6022/6023/6024)

FY 2025-2026

PER UNIT ANALYSIS

Fee #	Fee Name	Current Fee	Fee Description	Cost Per Unit	Current Cost Recovery %	Proposed Cost Recovery %	Proposed Fee	
29	Emergency Responder Communication Coverage System (ERCCS)	\$0	Initial Fee	\$480	0%	100%	\$480	Initial Fee
29.1	Emergency Responder Communication Coverage System (ERCCS) - Complex Review and	\$0	Actual cost per hour after initial review	\$192	100%	100%	\$192	Actual cost per hour after initial review
30	Third Party - applicant request AND required for technical assistance for complex review, and other cases where a consultant is required	\$0	Actual cost plus 20% admin fee	\$0	100%		\$0	Actual cost plus 20% admin fee
31	Additional Inspection Requests	\$0	Per Inspection	\$192	0%	100%	\$192	Per Inspection
32	After Hours Inspection Request	\$0	Actual cost per hour	\$192	0%	100%	\$192	Actual cost per hour
33	Master Fire Protection Plan	\$0	Fixed Fee	\$576	0%	100%	\$576	Fixed Fee
34	Stored water system or private fire water system without fire pump review	\$0	Fixed Fee	\$959	0%	100%	\$959	Fixed Fee
35	Stored water system or private fire water system with fire pump review	\$0	Fixed Fee	\$1,535	0%	100%	\$1,535	Fixed Fee
SPRINKLERS + FIRE ALARMS:								
36	Residential fire sprinklers NFPA13D system	\$232	Fixed Fee	\$815	28%	100%	\$815	Fixed Fee
37	Residential fire sprinkler NFPA 13R system 1 - 5,000 sq ft	\$0	Fixed Fee	\$815	0%	100%	\$815	Fixed Fee
38	Residential fire sprinkler NFPA 13R system - Every additional 5,000 sq ft	\$0	Every additional 5,000 sq ft	\$192	0%	100%	\$192	Every additional 5,000 sq ft
39	Commercial fire sprinkler NFPA 13 system 1 - 10,000 sq ft	\$509	Fixed Fee	\$1,439	35%	100%	\$1,439	Fixed Fee
40	Commercial fire sprinkler NFPA 13 system - Every additional 10,000 sq ft	\$0	Every additional 10,000 sq ft	\$480	0%	100%	\$480	Every additional 10,000 sq ft
41	Commercial fire sprinkler NFPA 13 fire sprinkler monitoring system (up to ten devices after that full fire alarm review)	\$0	Fixed Fee (up to ten devices after that full fire alarm review)	\$528	0%	100%	\$528	Fixed Fee (up to ten devices after that full fire alarm review)

USER FEE STUDY:

SANTA BARBARA COUNTY FIRE DEPARTMENT

Santa Barbara County - 2025-2026								
Fire Prevention - 2000								
(6010/6022/6023/6024)								
FY 2025-2026								
PER UNIT ANALYSIS								
Fee #	Fee Name	Current Fee	Fee Description	Cost Per Unit	Current Cost Recovery %	Proposed Cost Recovery %	Proposed Fee	
41.1	Tenant Improvements of a structure with fire sprinkler system - up to 30 heads	\$92	Fixed Fee	\$144	100%	100%	\$144	Fixed Fee
41.2	Tenant Improvements of a structure with fire sprinkler system - each additional 30 heads	\$185	Fixed Fee	\$144	100%	100%	\$144	Fixed Fee
42	Fire Alarm Review: Up to 10 initiating devices	\$0	Fixed Fee	\$624	0%	100%	\$624	Fixed Fee
43	Fire Alarm Review: Each additional 10 initiating devices	\$0	Each additional 10 initiating devices	\$144	0%	100%	\$144	Each additional 10 initiating devices
43.1	Tenant Improvements of a structure with fire alarm system - up to 10 devices	\$0	Fixed Fee	\$144	100%	100%	\$144	Fixed Fee
43.2	Tenant Improvements of a structure with fire alarm system - each additional 10 devices	\$0	Fixed Fee	\$144	100%	100%	\$144	Fixed Fee
44	Hood Systems	\$0	Per Hood System	\$336	0%	100%	\$336	Per Hood System
45	Other Fire Protection Systems	\$0	Fixed Fee	\$624	0%	100%	\$624	Fixed Fee
45.1	Tenant Improvements of a structure of other fire protection system	\$0	Per Hour (1 hour minimum)	\$192	100%	100%	\$192	Per Hour (1 hour minimum)
MISCELLANEOUS FEES								
46	Zoning Clearance Fee	\$0	Fixed Fee	\$384	0%	100%	\$384	Fixed Fee
47	Reinspection Fee	\$0	Fixed Fee Per Inspection	\$192	0%	100%	\$192	Fixed Fee Per Inspection
48	Special Event Review (No charge for 1st hour) per hour thereafter	\$0	Per Hour (First hour no charge)	\$192	0%	100%	\$192	Per Hour (First hour no charge)
49	Film Review	\$0	Fixed Fee	\$288	0%	100%	\$288	New Fixed Fee
49.1	Film Application Review (without required inspection)	\$0	Fixed Fee	\$192	100%	100%	\$192	Fixed Fee
50	Film (Stand by)	\$0	Per Hour	\$192	0%	100%	\$192	Per Hour

USER FEE STUDY:

SANTA BARBARA COUNTY FIRE DEPARTMENT

Santa Barbara County - 2025-2026								
Fire Prevention - 2000 (6010/6022/6023/6024)			PER UNIT ANALYSIS					
FY 2025-2026								
Fee #	Fee Name	Current Fee	Fee Description	Cost Per Unit	Current Cost Recovery %	Proposed Cost Recovery %	Proposed Fee	
50.1	Film Permit Inspection/Spot Check	\$0	2 Hours Per Check or Actual Cost	\$384	100%	100%	\$384	2 Hours Per Check or Actual Cost
50.2	Fire Safety Officer	\$0	Actual Cost Per Hour (including travel time)	\$0	100%		\$0	Actual Cost Per Hour (including travel time)
51	Code Enforcement	\$0	Per Hour	\$192	0%	100%	\$192	Per Hour
52	Unwanted Alarm Response: greater than 3 per month	\$0	Hourly rate for all personnel used to bring the alarm system into compliance after the second inspection	\$192	0%	100%	\$192	Hourly rate for all personnel used to bring the alarm system into compliance after the second inspection
53	Fire Prevention Safety Officer	\$0	Per Hour	\$192	0%	100%	\$192	Per Hour
OPERATIONAL PERMITS								
54	Additive manufacturing	\$0	Fixed Fee	\$288	0%	100%	\$288	Fixed Fee
55	Aerosol products	\$99	Fixed Fee	\$288	34%	100%	\$288	Fixed Fee
56	Amusement buildings	\$99	Fixed Fee	\$671	15%	100%	\$671	Fixed Fee
57	Aviation facilities	\$145	Fixed Fee	\$288	50%	100%	\$288	Fixed Fee
58	Carnivals and fairs	\$99	Fixed Fee	\$863	11%	100%	\$863	Fixed Fee
59	Cellulose nitrate film	\$198	Fixed Fee	\$288	69%	100%	\$288	Fixed Fee
60	Combustible dust-producing operations	\$99	Fixed Fee	\$288	34%	100%	\$288	Fixed Fee
61	Combustible fibers	\$99	Fixed Fee	\$288	34%	100%	\$288	Fixed Fee
62	Compressed gases	\$99	Fixed Fee	\$288	34%	100%	\$288	Fixed Fee

USER FEE STUDY:

SANTA BARBARA COUNTY FIRE DEPARTMENT

Santa Barbara County - 2025-2026								
Fire Prevention - 2000 (6010/6022/6023/6024)			PER UNIT ANALYSIS					
FY 2025-2026								
Fee #	Fee Name	Current Fee	Fee Description	Cost Per Unit	Current Cost Recovery %	Proposed Cost Recovery %	Proposed Fee	
63	Covered and open mall buildings	\$149	Remove	\$0		n/a		Remove
64	Cryogenic fluids	\$99	Fixed Fee	\$288	34%	100%	\$288	Fixed Fee
65	Cutting and welding	\$99	<i>Refer hot work operations</i>	\$0		n/a		<i>Refer hot work operations</i>
66	Dry cleaning	\$99	Fixed Fee	\$288	34%	100%	\$288	Fixed Fee
67	Energy storage systems	\$0	Fixed Fee	\$288	0%	100%	\$288	Fixed Fee
68	Exhibits and trade shows	\$274	Fixed Fee	\$863	32%	100%	\$863	Fixed Fee
69	Explosives	\$206	Fixed Fee	\$480	43%	100%	\$480	Fixed Fee
71	Flammable or combustible liquids: 1. Pipeline	\$137	Fixed Fee	\$288	48%	100%	\$288	Fixed Fee
72	Flammable or combustible liquids: 2. To store Class I liquids >5in, >10 out	\$99	Fixed Fee	\$288	34%	100%	\$288	Fixed Fee
73	Flammable or combustible liquids: 3. To store Class II or III-A liquids >25 in, >60 out	\$99	Fixed Fee	\$288	34%	100%	\$288	Fixed Fee
74	Flammable or combustible liquids: 6. To install, construct, alter or operate equipment, tanks, plants, terminals, wells, refineries, etc.	\$1,070	Fixed Fee	\$959	112%	100%	\$959	Fixed Fee
75	Flammable or combustible liquids: 9. To manufacture, process, blend or refine	\$0	Actual Cost (Sec. 15-102)	\$0	100%		\$0	Actual Cost (Sec. 15-102)
76	Flammable or combustible liquids: 10. Dispensing into fuel tanks of motor vehicles	\$99	Fixed Fee	\$288	34%	100%	\$288	Fixed Fee
77	Flammable or combustible liquids: 11. Dispensing from tank vehicles to motor vehicles	\$99	Fixed Fee	\$288	34%	100%	\$288	Fixed Fee
78	To maintain non-operational petroleum facilities	\$0	Fixed Fee	\$288	0%	100%	\$288	Fixed Fee
79	Floor finishing	\$99	Fixed Fee	\$288	34%	100%	\$288	Fixed Fee

USER FEE STUDY:

SANTA BARBARA COUNTY FIRE DEPARTMENT

Santa Barbara County - 2025-2026
 Fire Prevention - 2000
 (6010/6022/6023/6024)
 FY 2025-2026

PER UNIT ANALYSIS

Fee #	Fee Name	Current Fee	Fee Description	Cost Per Unit	Current Cost Recovery %	Proposed Cost Recovery %	Proposed Fee	
63	Covered and open mall buildings	\$149	Remove	\$0		n/a		Remove
80	Fruit and crop ripening	\$99	Fixed Fee	\$288	34%	100%	\$288	Fixed Fee
81	Fumigation and insecticidal fogging	\$198	Fixed Fee	\$288	69%	100%	\$288	Fixed Fee
82	Hazardous materials	\$99	Fixed Fee	\$576	17%	100%	\$576	Fixed Fee
86	HPM facilities	\$198	Fixed Fee	\$480	41%	100%	\$480	Fixed Fee
87	High-piled storage	\$198	Fixed Fee	\$288	69%	100%	\$288	Fixed Fee
88	Hot work operations	\$99	Fixed Fee	\$288	34%	100%	\$288	Fixed Fee
88.1	Indoor plant cultivation	\$0	Fixed Fee	\$288	100%	100%	\$288	Fixed Fee
89	Industrial ovens	\$274	Fixed Fee	\$288	95%	100%	\$288	Fixed Fee
91	Liquid or gas fueled vehicles or equipment in assembly buildings	\$99	Fixed Fee	\$288	34%	100%	\$288	Fixed Fee
91.1	Lithium batteries	\$0	Fixed Fee	\$288	0%	100%	\$288	Fixed Fee
92	LP - gas	\$99	Fixed Fee	\$288	34%	100%	\$288	Fixed Fee
90	Lumber yard and woodworking plants	\$149	Fixed Fee	\$288	52%	100%	\$288	Fixed Fee
93	Magnesium	\$198	Fixed Fee	\$288	69%	100%	\$288	Fixed Fee
94	Miscellaneous combustible storage	\$99	Fixed Fee	\$288	34%	100%	\$288	Fixed Fee

USER FEE STUDY:

SANTA BARBARA COUNTY FIRE DEPARTMENT

Santa Barbara County - 2025-2026								
Fire Prevention - 2000								
(6010/6022/6023/6024)								
FY 2025-2026								
PER UNIT ANALYSIS								
Fee #	Fee Name	Current Fee	Fee Description	Cost Per Unit	Current Cost Recovery %	Proposed Cost Recovery %	Proposed Fee	
96	Motor fuel-dispensing facilities	\$0	Fixed Fee	\$288	0%	100%	\$288	Fixed Fee
97	Open burning	\$0	Fixed Fee	\$288	0%	100%	\$288	Fixed Fee
98	LE5	\$0	Fixed Fee	\$288	0%	100%	\$288	Fixed Fee
99	LE7	\$0	Base fee up to 10 acres then plus hourly rate	\$576	0%	100%	\$576	Base fee up to 10 acres then plus hourly rate
100	Burn Permit Program: Agricultural Burning Permit	\$50	Fixed Fee	\$288	17%	100%	\$288	Fixed Fee
101	Burn Permit Program: Tier II Burn Permit	\$0	Fixed Fee	\$576	0%	100%	\$576	Fixed Fee
102	Burn Permit Program: Backyard	\$50	Fixed Fee	\$96	52%	100%	\$96	Fixed Fee
103	Fire Hazard Reduction	\$50	Fixed Fee	\$96	52%	100%	\$96	Fixed Fee
104	Open flames and torches	\$99	<i>Refer hot work operations</i>	\$0		n/a		<i>Refer hot work operations</i>
105	Open flames and candles	\$99	Fixed Fee	\$288	34%	100%	\$288	Fixed Fee
106	Organic coatings	\$99	Fixed Fee	\$288	34%	100%	\$288	Fixed Fee
107	Outdoor assembly event	\$99	Fixed Fee	\$1,055	9%	100%	\$1,055	Fixed Fee
108	Places of assembly	\$99	Fixed Fee	\$384	26%	100%	\$384	Fixed Fee
108.1	Plant extraction systems	\$0	Fixed Fee	\$288	100%	100%	\$288	Fixed Fee
109	Pyrotechnic special effects material	\$274	Fixed Fee	\$1,055	26%	100%	\$1,055	Fixed Fee

USER FEE STUDY:

SANTA BARBARA COUNTY FIRE DEPARTMENT

Santa Barbara County - 2025-2026

Fire Prevention - 2000

(6010/6022/6023/6024)

FY 2025-2026

PER UNIT ANALYSIS

Fee #	Fee Name	Current Fee	Fee Description	Cost Per Unit	Current Cost Recovery %	Proposed Cost Recovery %	Proposed Fee	
110	Pyroxylin plastics	\$198	Fixed Fee	\$288	69%	100%	\$288	Fixed Fee
111	Refrigeration equipment	\$99	Fixed Fee	\$288	34%	100%	\$288	Fixed Fee
112	Repair garages and motor fuel-dispensing facilities	\$99	Fixed Fee	\$288	34%	100%	\$288	Fixed Fee
113	Rooftop heliports	\$0	Remove	\$0	100%	n/a		Remove
114	Spraying or dipping	\$99	Fixed Fee	\$288	34%	100%	\$288	Fixed Fee
115	Storage of scrap tires and tire byproducts	\$149	Fixed Fee	\$288	52%	100%	\$288	Fixed Fee
116	First Tent	\$137	Fixed Fee	\$192	71%	100%	\$192	Fixed Fee
117	Each tent thereafter	\$137	Fixed Fee	\$48	285%	100%	\$48	Fixed Fee
118	Tire re-building plants	\$0	Actual cost (Sec. 15-102)	\$0	100%		\$0	Actual cost (Sec. 15-102)
119	Waste handling	\$149	Fixed Fee	\$288	52%	100%	\$288	Fixed Fee
120	Wood products	\$149	Fixed Fee	\$288	52%	100%	\$288	Fixed Fee
121	Temporary heating or cooking in wildfire risk areas	\$0	Fixed Fee	\$288	0%	100%	\$288	Fixed Fee
95	Mobile fueling of hydrogen-fueled vehicles	\$0	Fixed Fee	\$288	0%	100%	\$288	Fixed Fee
122	Additional permits (SFM required): Production facilities	\$137	Fixed Fee	\$384	36%	100%	\$384	Fixed Fee
123	Additional permits (SFM required): Fireworks pyrotechnic and special effect (theatrical/movies)	\$274	Fixed Fee	\$1,055	26%	100%	\$1,055	Fixed Fee
124	Additional permits (SFM required): Live audiences	\$137	Fixed Fee	\$384	36%	100%	\$384	Fixed Fee

USER FEE STUDY:

SANTA BARBARA COUNTY FIRE DEPARTMENT

Santa Barbara County - 2025-2026							
Fire Prevention - 2000							
(6010/6022/6023/6024)							
FY 2025-2026							
PER UNIT ANALYSIS							
Fee #	Fee Name	Current Fee	Fee Description	Cost Per Unit	Current Cost Recovery %	Proposed Cost Recovery %	Proposed Fee
125.1	Multiple permit reduction - operational permits	\$0	New Fee: 20% Reduction (excludes	\$0			\$0 20% Reduction (excludes additional tent
CONSTRUCTION PERMITS:							
126	Automatic fire-extinguishing systems	\$0	Covered Under FPC	\$0		n/a	\$0 Covered Under FPC
127	Compressed gases	\$411	Covered Under FPC	\$0		n/a	\$0 Covered Under FPC
128	Cryogenic fluids	\$0	Covered Under FPC	\$0		n/a	\$0 Covered Under FPC
129	Emergency responder radio coverage system	\$0	Covered Under FPC	\$0		n/a	\$0 Covered Under FPC
130	Energy Storage Systems	\$274	Covered Under FPC	\$0		n/a	\$0 Covered Under FPC
131	Fire alarm and detection systems and related equipment	\$0	Covered Under FPC	\$0		n/a	\$0 Covered Under FPC
132	Fire pumps and related equipment	\$0	Covered Under FPC	\$0		n/a	\$0 Covered Under FPC
133	Flammable or combustible liquids: 1. To repair or modify a pipeline	\$274	Covered Under FPC	\$0		n/a	\$0 Covered Under FPC
134	Flammable or combustible liquids: 2. To install, construct or alter equipment, tanks, plants, terminals, wells, refineries, etc.	\$1,370	Covered Under FPC	\$0		n/a	\$0 Covered Under FPC
135	Flammable or combustible liquids: 3. To install, alter, remove, abandon or otherwise dispose of a tank AST - less than 1,320 gallons	\$274	Covered Under FPC	\$0		n/a	\$0 Covered Under FPC
136	Flammable or combustible liquids: 3. To install, alter, remove, abandon or otherwise dispose of a tank AST - equal to or greater than 1,320	\$548	Covered Under FPC	\$0		n/a	\$0 Covered Under FPC
137	Gates and barricades across fire apparatus access roads	\$0	Covered Under FPC	\$0		n/a	\$0 Covered Under FPC

USER FEE STUDY:

SANTA BARBARA COUNTY FIRE DEPARTMENT

Santa Barbara County - 2025-2026								
Fire Prevention - 2000 (6010/6022/6023/6024)			PER UNIT ANALYSIS					
FY 2025-2026								
Fee #	Fee Name	Current Fee	Fee Description	Cost Per Unit	Current Cost Recovery %	Proposed Cost Recovery %	Proposed Fee	
138	Hazardous materials: Group 1	\$137	Covered Under FPC	\$0		n/a	\$0	Covered Under FPC
139	Hazardous materials: Group 2	\$274	Covered Under FPC	\$0		n/a	\$0	Covered Under FPC
140	Hazardous materials: Group 3	\$343	Covered Under FPC	\$0		n/a	\$0	Covered Under FPC
141	Hazardous materials: Group 4	\$411	Covered Under FPC	\$0		n/a	\$0	Covered Under FPC
142	Industrial ovens	\$274	Covered Under FPC	\$0		n/a	\$0	Covered Under FPC
143	LP gas	\$137	Covered Under FPC	\$0		n/a	\$0	Covered Under FPC
144	Private fire hydrants	\$0	Covered Under FPC	\$0		n/a	\$0	Covered Under FPC
145	Smoke control or smoke exhaust systems	\$0	Covered Under FPC	\$0		n/a	\$0	Covered Under FPC
146	Solar photovoltaic power systems	\$274	Covered Under FPC	\$0		n/a	\$0	Covered Under FPC
147	Spraying or dipping	\$274	Covered Under FPC	\$0		n/a	\$0	Covered Under FPC
148	Standpipe systems	\$0	Covered Under FPC	\$0		n/a	\$0	Covered Under FPC
149	Temporary membrane structures, tents and canopies	\$137	Covered Under FPC	\$0		n/a	\$0	Covered Under FPC
OCCUPANCY INSPECTION FEES								
150	Group R-1 Occupancy Inspection (Annual), fee is applicable to all hotels, motels, and boarding houses per facility under the same ownership at a single property.	\$0	Fixed Fee	\$863	0%	100%	\$863	Fixed Fee

USER FEE STUDY:

SANTA BARBARA COUNTY FIRE DEPARTMENT

Santa Barbara County - 2025-2026								
Fire Prevention - 2000								
(6010/6022/6023/6024)								
FY 2025-2026								
		PER UNIT ANALYSIS						
Fee #	Fee Name	Current Fee	Fee Description	Cost Per Unit	Current Cost Recovery %	Proposed Cost Recovery %	Proposed Fee	
151	Group R-2 Occupancy Inspection (Annual), fee is applicable to all Multi-Family Dwelling units with more than 15 units or more than 2 stories in height.	\$0	Fixed Fee	\$288	0%	100%	\$288	Fixed Fee
152	Group C Occupancy Inspection (Annual), Organized Camps	\$0	Fixed Fee	\$480	0%	100%	\$480	Fixed Fee
153	Group I Institutional Occupancy Inspections (Annual)	\$0	Fixed Fee	\$480	0%	100%	\$480	Fixed Fee
154	Group L Laboratory Occupancy Inspection (Annual)	\$0	Fixed Fee	\$384	0%	100%	\$384	Fixed Fee
155	High Rise Inspection Fee (Over 75 feet in height)	\$0	Fixed Fee	\$863	0%	100%	\$863	Fixed Fee
156	Inspection fee for any occupancy over 5000 sq ft	\$0	Fixed Fee	\$576	0%	100%	\$576	Fixed Fee
157	After Hour Inspection Fee	\$0	Actual Cost Per Hour	\$192	0%	100%	\$192	Actual Cost Per Hour
158	Code Enforcement Fee – The fully allocated rate will be charged for all personnel used to bring an occupancy into compliance for all time after the second inspection. Additional fees and/or fines may be imposed when a citation is issued.	\$0	Per Hour	\$192	0%	100%	\$192	Per Hour
159	Release of Stop Work Order	\$0	Fixed Fee	\$1,631	0%	100%	\$1,631	Fixed Fee
160	Fire Clearance Inspections for Licensed Facilities: Licensed Care Pre-Inspection, for I's and R's, and Daycares 1-25 people	\$0	Fixed Fee	\$192	0%	100%	\$192	Fixed Fee
161	Fire Clearance Inspections for Licensed Facilities: Licensed Care Pre-Inspection, for I's and R's, and	\$0	Fixed Fee	\$288	0%	100%	\$288	Fixed Fee
162	Fire Clearance Inspections for Licensed Facilities: Licensed Care Initial Fire Clearance, for I's, R's and Daycares 1-6 people	\$0	No Charge	\$192	0%	n/a	\$0	No Charge

USER FEE STUDY:

SANTA BARBARA COUNTY FIRE DEPARTMENT

Santa Barbara County - 2025-2026							
Fire Prevention - 2000							
(6010/6022/6023/6024)							
FY 2025-2026							
		PER UNIT ANALYSIS					
Fee #	Fee Name	Current Fee	Fee Description	Cost Per Unit	Current Cost Recovery %	Proposed Cost Recovery %	Proposed Fee
163	Fire Clearance Inspections for Licensed Facilities: Licensed Care Initial Fire Clearance, for I's, R's and Daycares 7-12 people	\$0	Fixed Fee	\$240	0%	100%	\$240 Fixed Fee
164	Fire Clearance Inspections for Licensed Facilities: Licensed Care Initial Fire Clearance, for I's, R's and Daycares 13+ people	\$0	Fixed Fee	\$288	0%	100%	\$288 Fixed Fee
165	Fire Clearance Inspections for Licensed Facilities: Licensed Residential Care Annual Inspection (R2.1 and R4's) 1-6 people	\$0	Fixed Fee	\$192	0%	100%	\$192 Fixed Fee
166	Fire Clearance Inspections for Licensed Facilities: Licensed Residential Care Annual Inspection (R2.1 and R4's) 7-12 people	\$0	Fixed Fee	\$240	0%	100%	\$240 Fixed Fee
167	Fire Clearance Inspections for Licensed Facilities: Licensed Residential Care Annual Inspection (R2.1 and R4's) 13+ people	\$0	Fixed Fee	\$288	0%	100%	\$288 Fixed Fee
168	All other NON 24 hour licensed care facility initial fire clearance or Form 850 request for inspection.	\$0	Fixed Fee	\$384	0%	100%	\$384 Fixed Fee

USER FEE STUDY:

SANTA BARBARA COUNTY FIRE DEPARTMENT

APPENDIX B

PEER AGENCIES								
Fee Category	Current Fee	Proposed Fee	Peer Average	Los Angeles County	Ventura County	Orange County	City of Culver City	Santa Monica
Fire Prevention - Operational Permits								
Open Burning	no current fee	\$288	\$363	\$390	\$504	Hourly Rate: \$254	Open flame/burning \$302.96	N/A
First Tent	\$137	\$192	\$289	\$390	\$210	Hourly Rate: \$254	Tents and Air Supported Structures 401-700 sq ft \$302.96 701-1,200 sq ft \$403.95 Over 1,201 sq ft \$555.44	Tents & Canopies 401-2,000 \$226.09 2,001-5,000 sq ft \$321.71 over 5,000 s foot \$0.062 per square foot
Each Tent thereafter	\$137	\$48						
Places of assembly	\$99	\$384	\$620	\$390	\$336	\$1,133	N/A	N/A
Hot work operations	\$99	\$288	\$365	\$390	\$378	\$138	compared to Welding and Cutting fee of \$555.44	Miscellaneous - uniform fire code permits, others Actual Cost
Land Development - Sprinklers and Alarms								
NFPA 13D Sprinkler	\$232	\$815	\$714	\$565	\$630	\$738	\$942.27	\$695.85