

# CENTRAL COAST AGRICULTURE



Central Coast Ag Farming Cannabis Cultivation  
19LUP-0000-00480  
21APL-00000-00028





# About Us

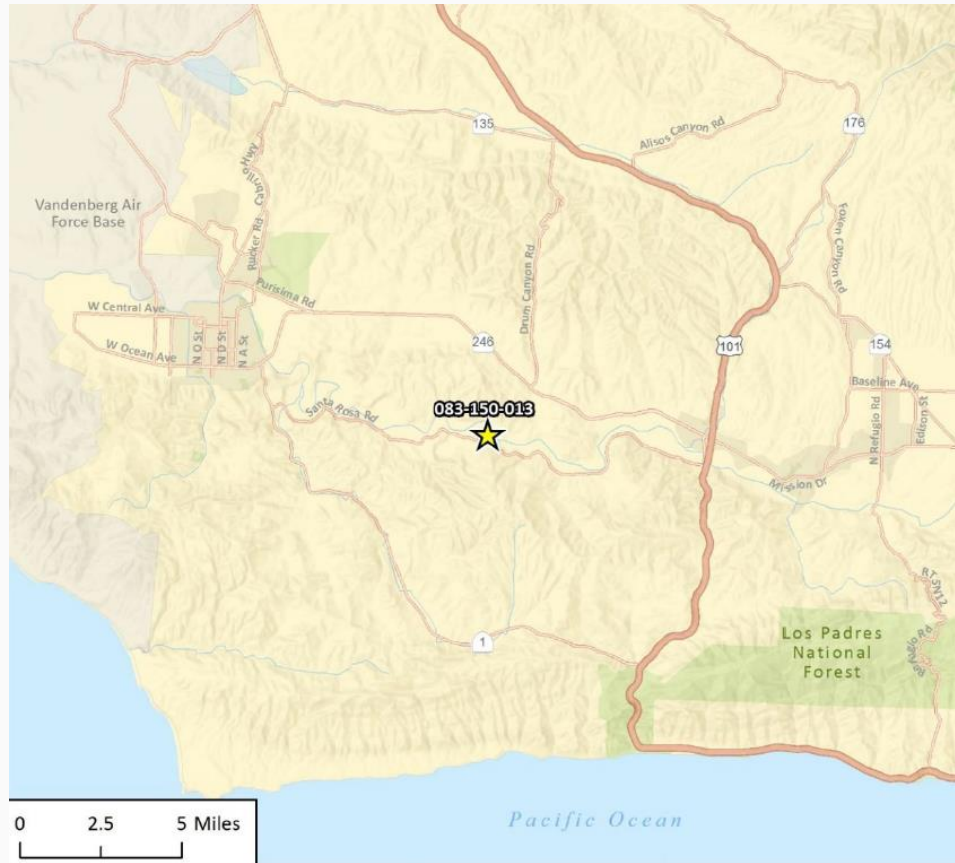
With our focus on innovation, we utilize our cultivation and manufacturing revenues to fund our research and breeding programs, creating a world class agricultural biotechnology company headquartered in the heart of Santa Barbara County.





# Project Location

- 9 miles west of the City of Buellton
- 10 miles east of the City of Lompoc
- Nearest Residential Zoning - 5+ miles







**KEY:**

- TEMPORARY ABOVE GROUND IRRIGATION LINES
- PERMANENT BELOW GROUND MAIN LINES
- RWQCB JURISDICTIONAL FEATURES
- RWQCB CULTIVATION SETBACK - 150'
- PROPERTY LINE
- SECURITY FENCE
- SECURITY GATE
- SETBACK LINE
- NON-CANNABIS AREA ~ 62.4 AC
- NURSERY AREAS 0.5 AC
- EXISTING CULTIVATION AREAS UNDER HOOPS 20 AC
- EXISTING CULTIVATION AREAS OUTDOOR 4 AC
- STRUCTURES - TO BE REMOVED



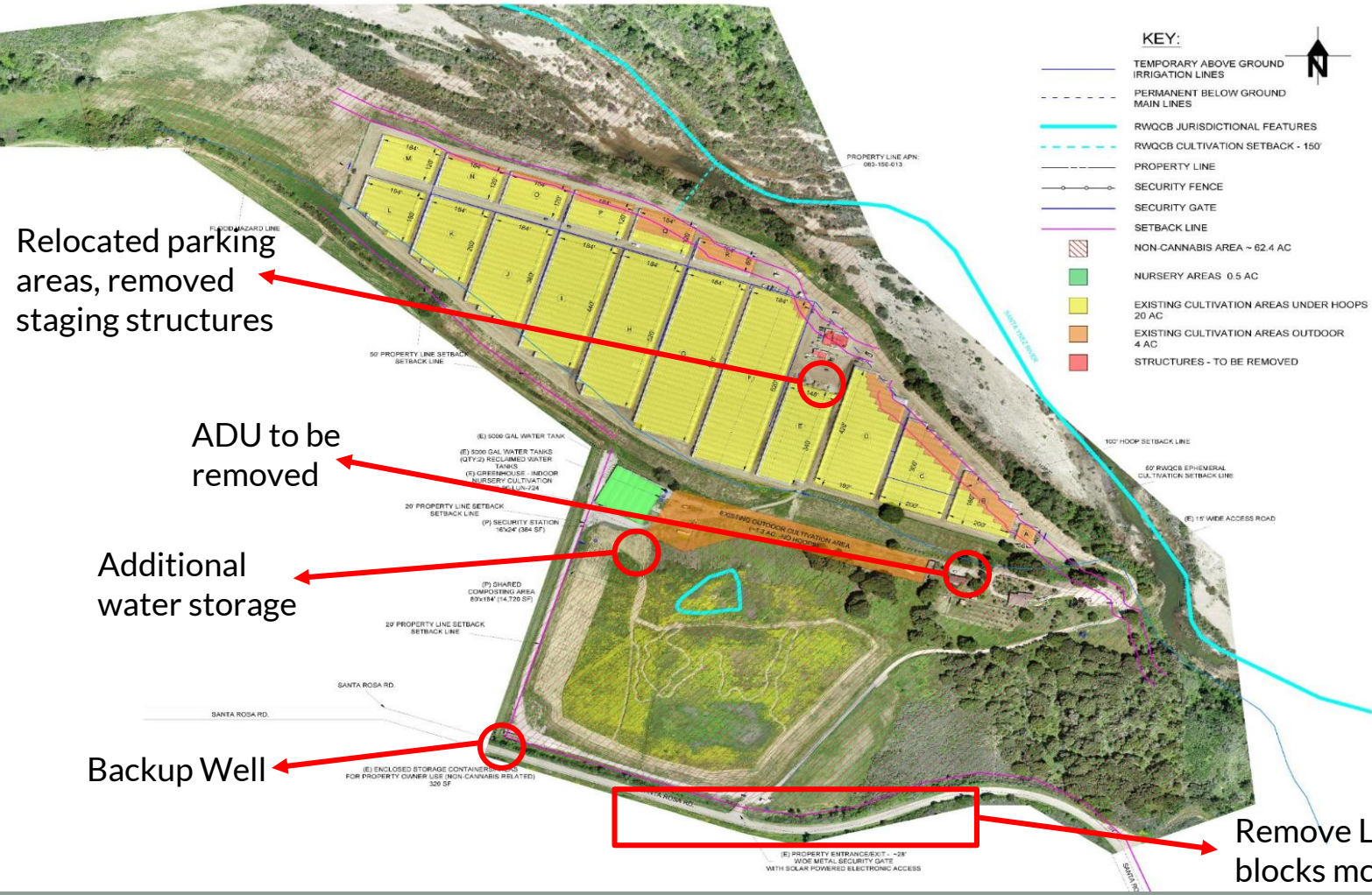
Relocated parking areas, removed staging structures

ADU to be removed

Additional water storage

Backup Well

Remove Landscaping which blocks mountain views



# Neighborhood Compatibility



Fiddlestix Vineyard

Sea Smoke Vineyard



Nursery Greenhouse

Outdoor Cultivation

Hoop house Cultivation



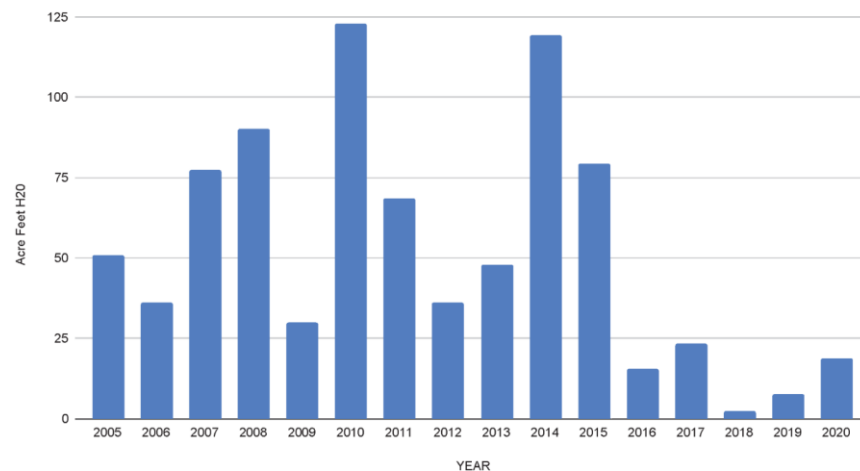
# Sustainability

Organically based  
breeding & precision  
agriculture

## Water Usage

- Historical Average = 36 (AF/YR)
- 5-year Average = 6.7 (AF/YR)
  - 82% decrease in water usage since cannabis cultivation began in 2015

Figure 1: Historical Water Usage (AF/YR)



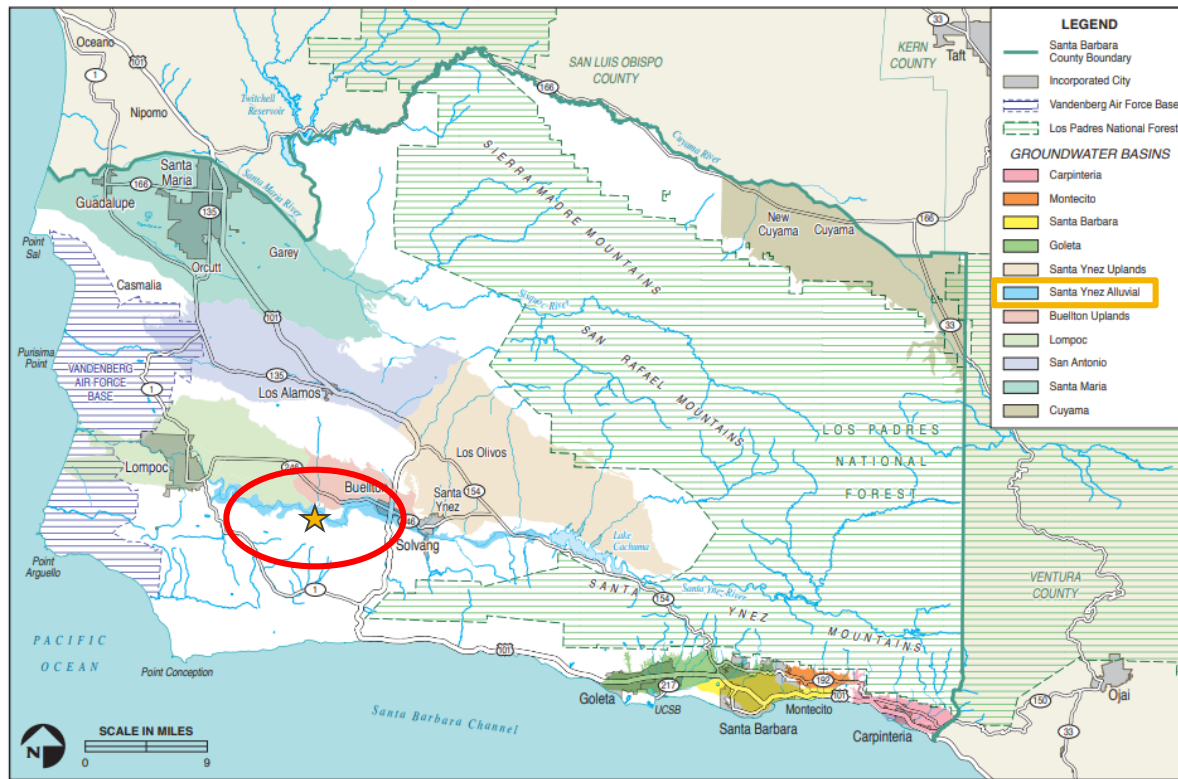




Thank you!



# Water Resources



Santa Barbara County  
Groundwater Basins

FIGURE  
3.8-2

## SB County Environmental Thresholds Manual - Santa Ynez River Alluvium Basin

- Wells in this area are considered by the County of Santa Barbara and PEIR to be groundwater, and there are no thresholds of significance



# Water Resources



## Groundwater Requirements<sup>10</sup>

To address potential impacts of groundwater diversions on surface flow, the Deputy Director may require a forbearance period or other measures for cannabis groundwater diversions in areas where such restrictions are necessary to protect instream flows. Such areas may include watersheds with: high surface water-groundwater connectivity; large numbers of cannabis groundwater diversions; and/or groundwater diversions in close proximity to streams. An aquatic base flow was developed at each compliance gage<sup>11</sup> during the surface water forbearance period (dry season) to inform the need for additional actions to address impacts associated with cannabis groundwater diversions. The aquatic base flow was established in consultation with CDFW. The aquatic base flow is established using USGS flow modeling data to calculate mean monthly flows and applying the New England Aquatic Base Flow Standard (ABF Standard) methodology at the compliance gages in the nine priority regions. The aquatic base flow is the set of chemical, physical, and biological conditions that represent limiting conditions for aquatic life in stream environments. This Policy allows the State Water Board to apply the ABF Standard to the USGS flow modeling data to calculate an aquatic base flow Requirement at additional compliance points, as needed, throughout the state. The State Water Board will monitor instream flows during the dry season and evaluate the number and location of cannabis groundwater diversions to determine whether imposition of a groundwater forbearance period or other measures are necessary. To address potential localized effects of groundwater diversions on surface water flow, the State Water Board will also monitor where significant numbers of surface water diverters are switching to groundwater diversions to evaluate whether imposition of a groundwater forbearance period or other measures are necessary. The State Water Board will notify cannabis cultivators of the possibility that a groundwater forbearance period or other measures may be imposed so that the cultivators can install storage, coordinate diversions, take measures to secure alternate water supplies, or identify other measures to address the low flow condition.

## State Water Resources Control Board

- Forbearance Period does not apply to Groundwater Diversions

