

Laguna County Sanitation District



FY 2023 – 2024
Rates and Fees



Laguna County Sanitation District

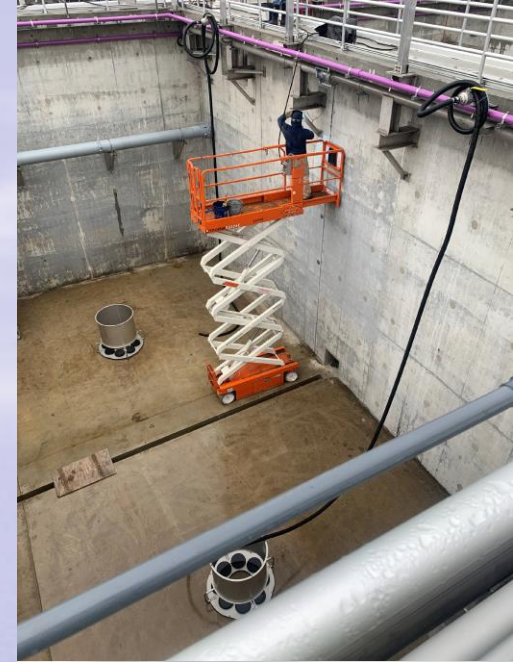


- Dependent special district created in 1958
- Provides wastewater services to Orcutt and unincorporated Santa Maria area
- Regulated by:
 - RWQCB Order R3-2023-0219 (plant)
 - SWRCB Order WQ 2016-0068-DDW (reclamation)
 - EPA (brine disposal well)
 - SWRCB 2006-0003 (sewer system)
 - SWRCB (operator licensing)
 - SWRCB 2014-0057-DWQ (industrial)
 - APCD (air emissions)
- Conserves and protects water resources



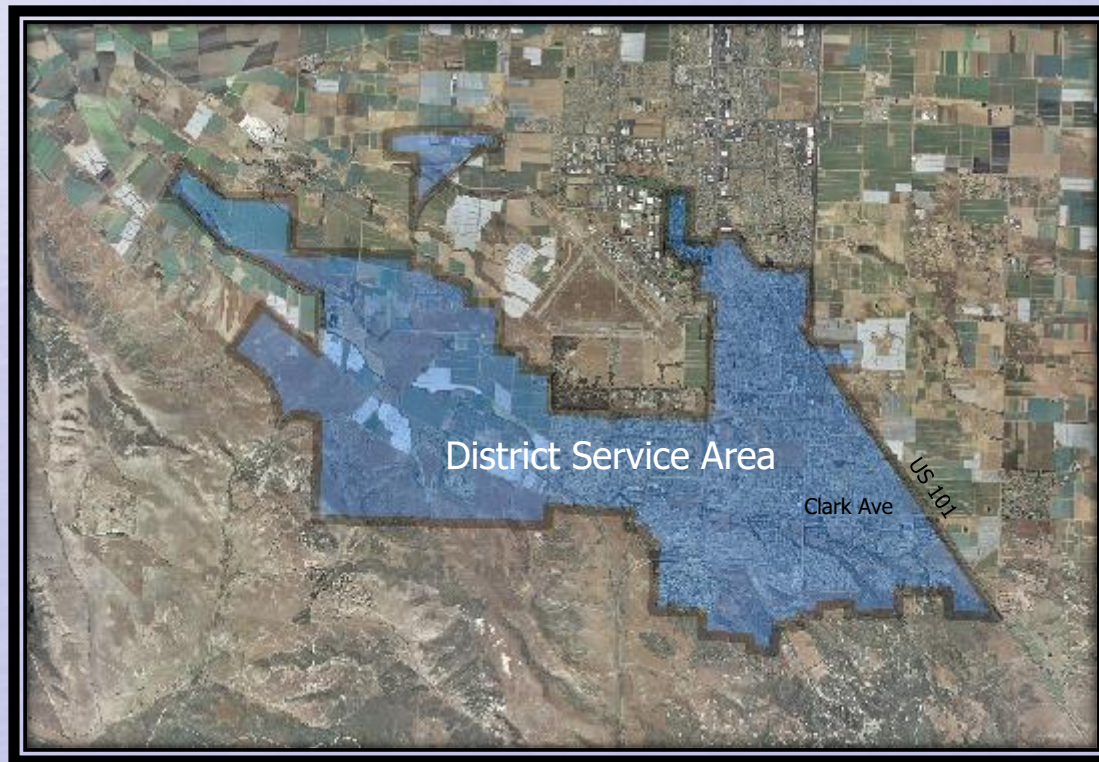
Current Activities

- Phase 1 plant upgrade in progress



Annual Rates and Fees Ordinance

- Public noticing pursuant to Prop 218
 - Mailer to 13,033 customers on 10,908 parcels
- Hearing date published pursuant to Government Code in Santa Maria Times
- A small number of written responses (less than 1%)



Sewer Charge Rates

- Pay for annual operation, maintenance, replacement, and reserves
- Collected on the tax roll
- 1.5% increase proposed for FY 2023-2024
 - Per rate study
 - CPI was 7.4%

Proposed Sewer Charge

Residential unit equivalent (RUE) rate

Proposed annual rate	\$1,121.55
<u>Last year's rate</u>	<u>\$1,104.98</u>
Rate increase/year	\$ 16.57

Equivalent to \$1.38/month (monthly rate of \$93.46)

Multiple Family Residential	= \$911.12/year
School	= \$58.18 per cap/year
Commercial	= Based on flow and load

Sewer Rates Countywide

<u>Treatment Level</u>	<u>Agency</u>	<u>Monthly Rate</u>	<u>Inc.</u>
Tertiary	Summerland	\$147.38*	Study
	Laguna	\$ 93.46	1.5%
	Lompoc	\$ 92.80	
Secondary	Vandenberg Village	\$ 75.67	
	Montecito	\$140.81*	
	Santa Ynez	\$104.05*	4.25%
	CSA 12 Mission Canyon	\$ 87.64	1.65%
	Los Alamos	\$ 77.99*	Study
	Carpinteria	\$ 79.31*	3.15%
	Cuyama	\$ 66.00	
	Mission Hills	\$ 74.60	8.4%
	Santa Barbara	\$ 61.24	2.37%
	Guadalupe	\$ 57.61	3.0%
	Goleta West Sanitary	\$ 52.78*	
	Goleta Sanitary	\$ 45.36*	Study
	Solvang	\$ 58.61	17.5%
	Buellton	\$ 30.45	
	Santa Maria	\$ 28.36	
	Average	\$ 76.34	

* These rates include estimated property tax contributions.
Study = a rate study is underway or proposed

Total Water Cost Comparison

<u>Agency</u>	<u>Water/Mo</u>	<u>Water and Sewer/Mo</u>
Summerland + Montecito Water	\$123.78	\$271.16
Montecito + Montecito Water	\$123.78	\$264.59
CSA 12 Mission Canyon + Santa Barbara	\$137.21	\$224.85
Santa Ynez + Santa Ynez RWCD 1	\$ 95.69	\$199.74
Santa Barbara	\$137.21	\$198.45
Carpinteria + Carpinteria Valley Water	\$109.09	\$188.40
Goleta West Sanitary + Goleta Water	\$128.02	\$180.80
Solvang	\$115.88	\$174.49
Goleta Sanitary + Goleta Water	\$128.02	\$173.46
Lompoc	\$ 79.36	\$172.16
Cuyama	\$ 93.40	\$159.40
Laguna + Golden State Water	\$ 54.60	\$148.06
Mission Hills	\$ 65.11	\$139.71
Los Alamos	\$ 50.81	\$128.80
Santa Maria	\$ 98.92	\$127.28
Guadalupe	\$ 65.96	\$123.57
Vandenberg Village	\$ 35.34	\$111.01
Buellton	\$ 65.31	\$ 95.76
Average		\$171.21

Water rates pay for recycling for Santa Barbara and Goleta

Water rates pay for salt reduction (state water) in Santa Maria Groundwater Basin by Santa Maria and Guadalupe

Developer Charges and Fees



- Paid by development for sewer system equity buy-in
 - Trunk line fees fund collection system improvements
 - Connection charges fund treatment and discharge improvements

Developer Charges and Fees

- Fees adjusted per index as prescribed by ordinance or agreement
- Connection charge per RUE (CCI = 7.6%) \$9,759
- Trunk Line Fees
 - Dutard trunk line per RUE (CCI = 7.6%) \$1,246
 - Bradley trunk line per RUE (PR = 7.5%) \$3,224

RUE = Residential Unit Equivalent

CCI = Engineering News Record Construction Cost Index

PR = Prime Rate set by developer reimbursement agreement

Recommendations

- Adopt ordinance setting the rates and fees for FY 2023-2024

