



July 2006

M.O.U.

BETWEEN THE CITY OF SANTA MARIA AND
THE COUNTY OF SANTA BARBARA

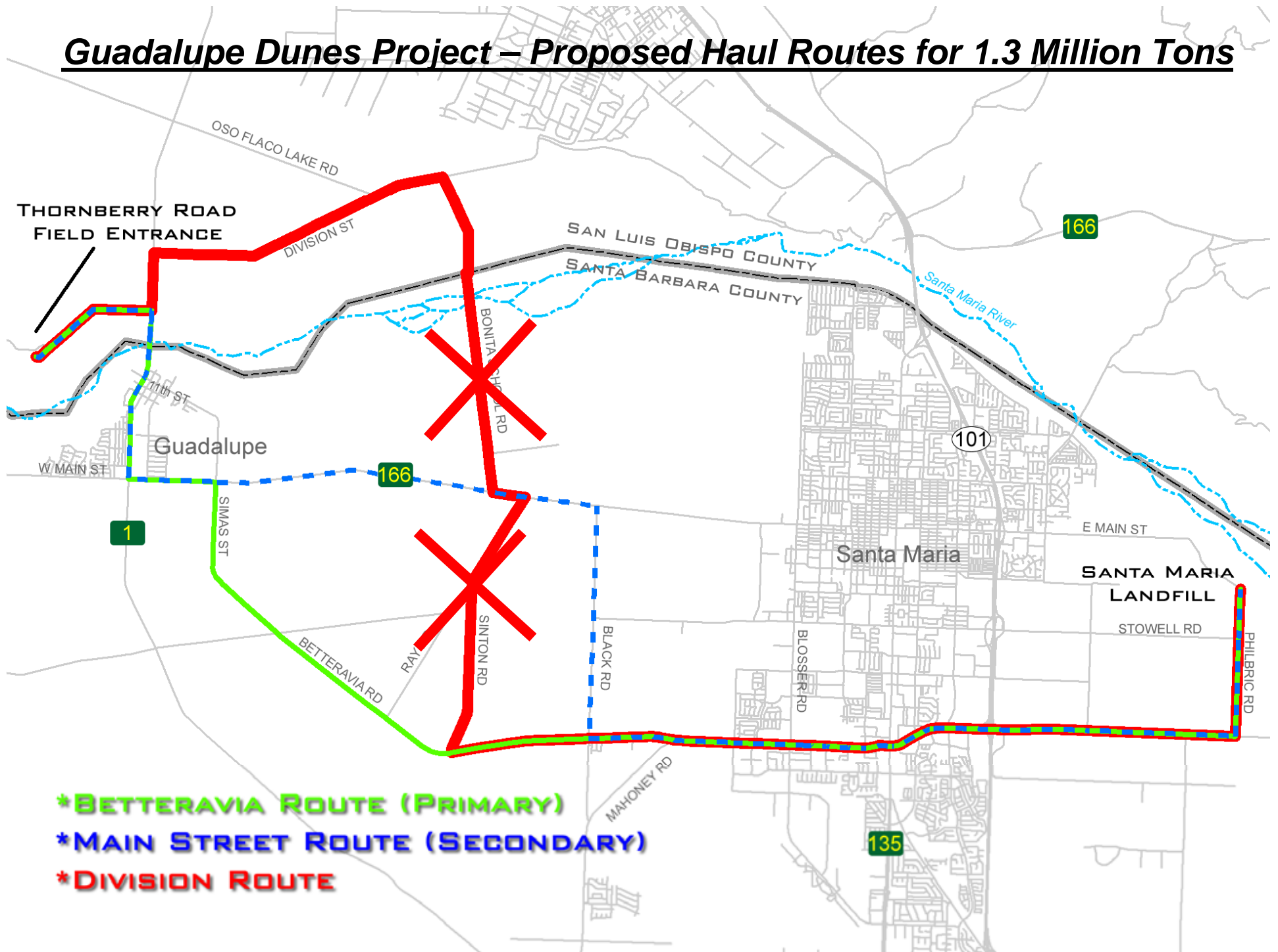


July 2006

Background

- Since your March 14, 2006 hearing, numerous stakeholder meetings, discussions and correspondences have been exchanged.
- The negotiations to date has resulted in the Memorandum of Understanding before your Board today for approval.
- This MOU covers up to 2.5 million tons of landfill cover material being haul on the CMRS.
- Approximately 1.3 million tons will come from the Guadalupe Dunes Project.
- The remaining 1.2 million tons will come from other projects which may require additional approval.

Guadalupe Dunes Project – Proposed Haul Routes for 1.3 Million Tons

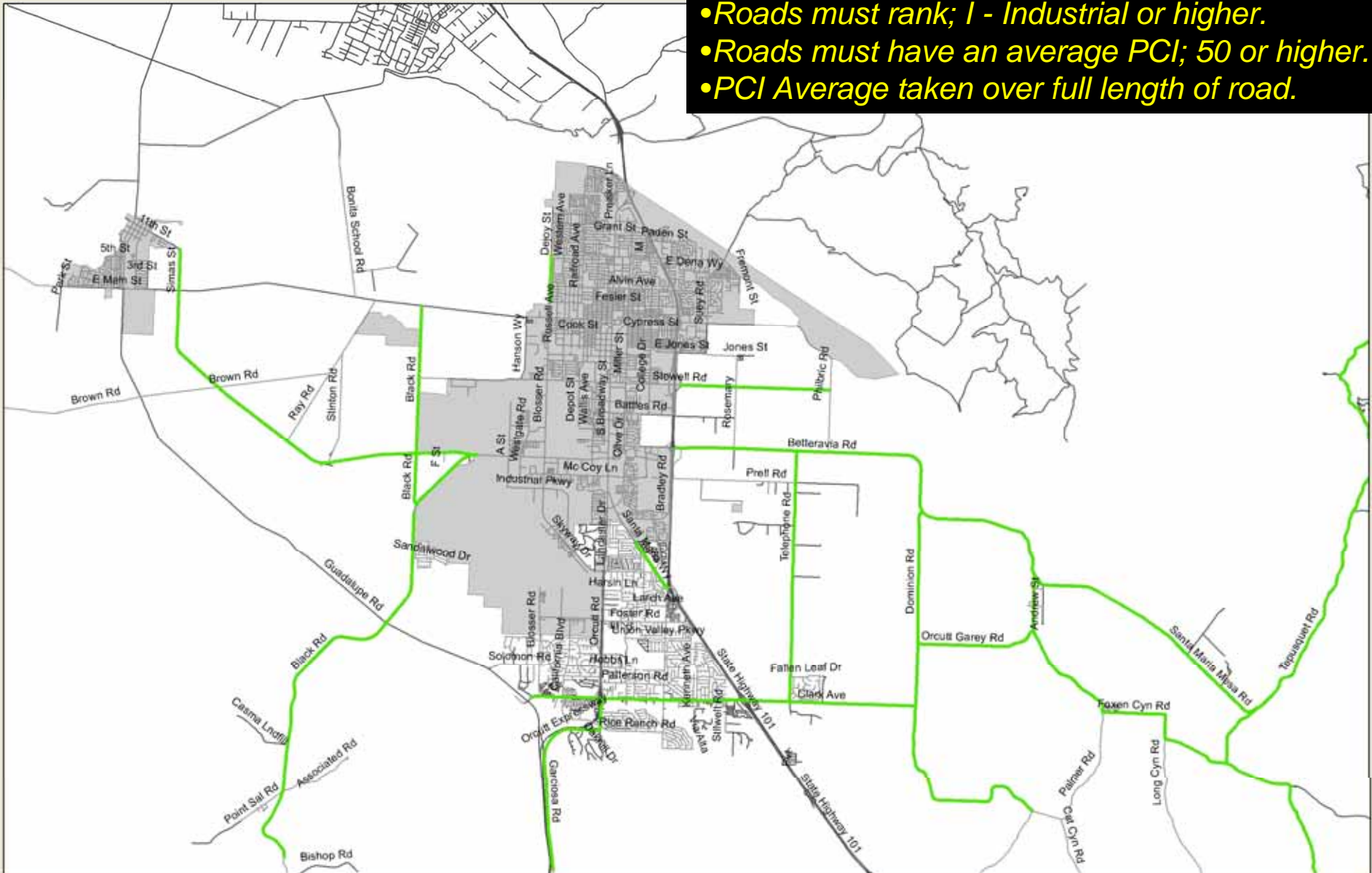


COUNTY OF SANTA BARBARA TRANSPORTATION DIVISION



Preferred Haul Routes for Remaining 1.2 Million Tons

- Roads must rank; I - Industrial or higher.
- Roads must have an average PCI; 50 or higher.
- PCI Average taken over full length of road.



COUNTY OF SANTA BARBARA TRANSPORTATION DIVISION



July 2006

MOU Details

	Item	One Time Cost	Annual Cost	Period	Notes
SERVICES	Reconstruction of Philbric Road - From Fxn Cyn Road to E. Main Street	\$3,000,000		No later than 2008	Philbric Road will be reconstructed per County specifications prior to October 1, 2008. The City shall provide a chip seal in 2006.
	O&M of Philbric Road - From Fxn Cyn Road to E. Main Street until active landfill operation termination	\$150,000	\$50,000	Until 2012	Upon landfill operation termination, in 2012, Santa Maria shall be responsible for the operation and maintenance of Philbric Road from Betteravia/Foxen Canyon Roads to East Main Street. The City shall provide a fog seal in 2009 and a chip seal in 2012 prior to the County taking the road back into the CMRS
	O&M of E. Main Street - From City limit to Philbric Road		\$50,000	99 years	Santa Maria shall be responsible for the operation and maintenance of East Main Street from the City Limit to Philbric Road. East Main Street shall be maintained by Santa Maria in accordance with County's adopted road maintenance standards.
REVENUE	\$0.35/ton surcharge on 2.5 million ton of cover material		\$175,000	5 years	Equates to \$875,000 to the County to maintain other roads hauled over for this volume of material. City to forward these funds on a quarterly basis to the County.
	Totals:	\$3,150,000	\$275,000		
		one time costs	per year		

Total Costs = \$4,525,000



July 2006

Staff Recommendations

That the Board of Supervisors:

- A) Approve a Memorandum of Understanding between the County of Santa Barbara and the City of Santa Maria to use the County Maintained Road System to haul landfill cover material.

- B) Approve the Project and Categorical Exemption pursuant to the County's California Environmental Quality Act (CEQA) for the Maintenance Program and Surface Treatment Program.



July 2006

Thank You