

Santa Barbara County Flood Control District



**Benefit Assessment Update
Board of Supervisors Meeting
June 16, 2009**

Post Fire Watershed – Jesusita Fire

Flood Control Benefit Assessments

- Voter Approved Assessments
- Assessment Approved with an Annual CPI Adjustment to Preserve Funding if applicable
- No Changes Proposed

**First Construction
Lower Mission Creek, January 2009**



Proposed Benefit Assessment Rates Unchanged from Last year

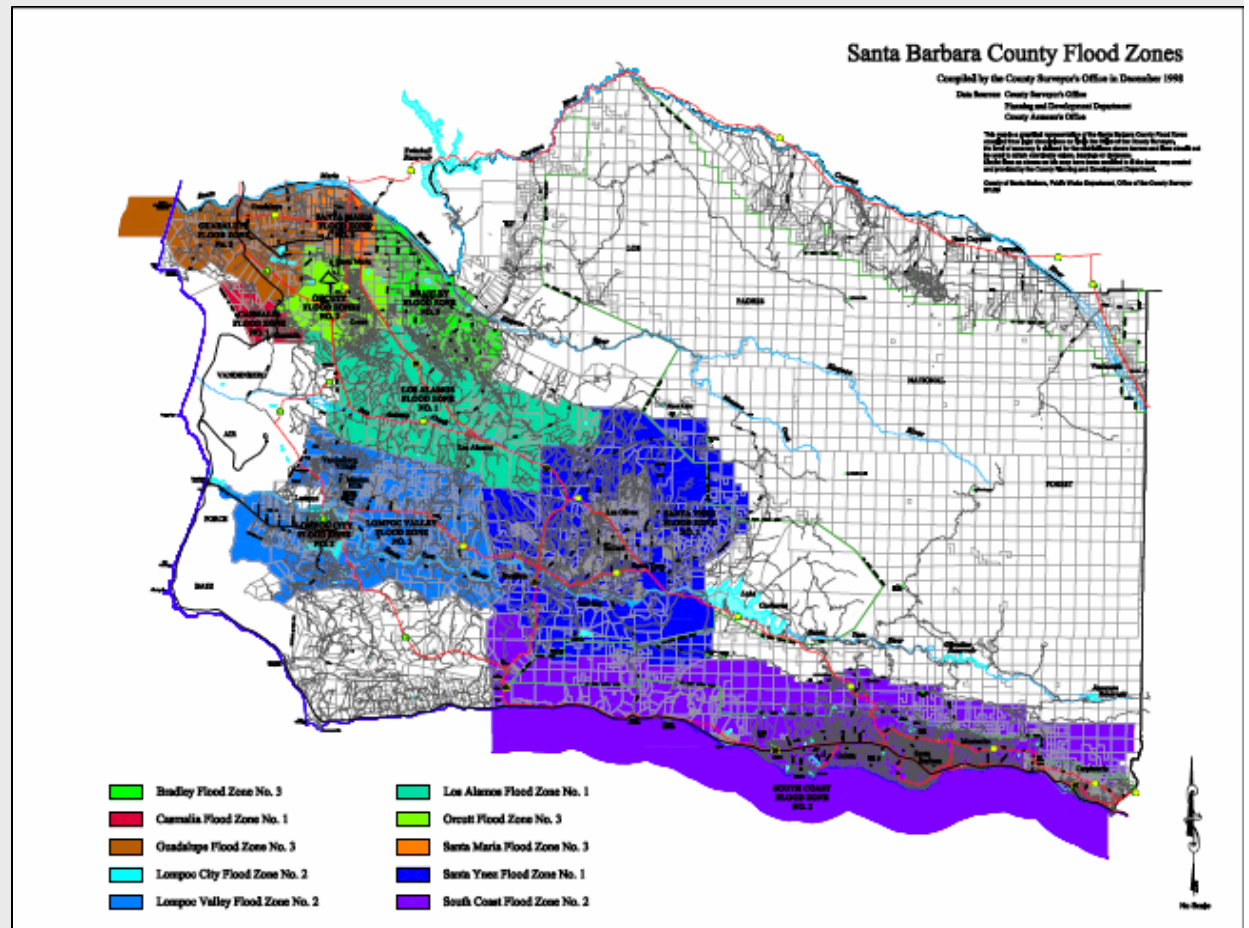
	Group A		Group B		Group C		Group D		Group E	
	FY 2009-2010		FY 2009-2010		FY 2009-2010		FY 2009-2010		FY 2009-2010	
	\$/Ac	Min \$ Assmt	\$/Ac	Min \$ Assmt		Min \$ Assmt	\$/Ac	Min \$ Assmt	\$/Ac	Min \$ Assmt
Bradley #3	37.57	11.27	28.17	8.45		5.67	1.40	0.42	0.13	0.04
Guadalupe #3	19.89	5.96	14.93	4.48		2.99	0.75	0.23	0.08	0.02
Lompoc City #2	83.92	25.18	62.93	18.88		12.59	3.15	0.94	0.30	0.09
Lompoc Valley #2	32.77	9.82	24.56	7.37		4.90	1.22	0.36	0.12	0.03
Los Alamos #1	41.67	12.50	31.26	9.37		6.25	1.56	0.46	0.15	0.04
Orcutt #3	24.97	7.50	18.73	5.62		3.75	0.93	0.28	0.10	0.03
Santa Maria #3	79.89	23.97	59.93	18.02		11.98	3.00	0.90	0.28	0.09
SMR Levee	21.56	6.47	16.16	4.85		3.24	0.80	0.25	0.09	0.02
Santa Ynez #1	18.40	5.52	13.80	4.14		2.76	0.69	0.20	0.08	0.02
South Coast #2	140.25	42.07	105.18	31.55		21.03	5.26	1.58	0.51	0.15

Staff Recommendations

Approval of Item A (1 & 2)

– First Reading

Return July 7, 2009 for Second Reading Final Adoption



Questions

Gap Fire Watershed – April 2009

