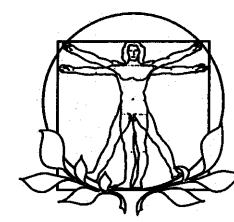


SIERRA BOTANICALS PROCESSING
CASE # 22LUP-00000-00465



1999 HWY. 101
BUELLTON, CA. 93427



R.P.M. Architects

3568 Sagunto St. Ste. K
Santa Ynez, CA 93460
Phone 805 688 7281

ABBREVIATIONS

Table of abbreviations including anchor bolt, asphaltic concrete, access, area drain, adjacent, above finish floor, aggregate, alternate, aluminum, anodized, arch, asphalt tile, automatic, board, below, between, biluminous, building, block, blocking, beam, benchmark, bottom of curb, bottom of footing, bottom of joist, bottom bearing, brick, bronze, both sides, built up roofing, bevel, both ways, channel steel, cabinet, catch basin, cement, ceramic, cubic foot, ceiling height, cast iron, cast in place, circle, ceiling joist, control joint, ceiling, clear, closure, centimeters, ceramic mosaic tile, concrete masonry unit, clean out, column, composition, concrete, connection, construction, continuous, contractor, corrugated, copper, countertop, casement, ceramic tile counter, countersink, cold water, cubic yard, demolition, penny, drain, double acting, double, douglos fir, drinking fountain, decomposed granite, double hung, diagonal, diameter, dimension, dead load, down, damper, door, downspout, detail, dishwasher, drawing, drawer, existing, east way, each, expansion bolt, each face, elevation, electrical, emergency enclosure, electrical panel, equal, equipment, escalator, electrical sub panel, estimate, exhaust, exposed, exterior, fire alarm, forced air unit, face brick, furnished by others, foundation, fire extinguisher, finish floor, finish floor line, flathead machine screw, flathead wood screw, finish, floor joist, floor cleanout, flexible, flashing, floor, fluorescent, face of concrete, face of finish, face of masonry, face of stud, fireproof, fireproof, fireproof, frame, footing, furring, future, gauge, galvanized, grab bar, general contractor, garbage disposal, grading, galvanized iron, glass, glazing, glass block, glu lora beam, galvanized pipe, gypsum lath, gypsum plaster, granite, galvanized sheet metal, gravel, gypsum wall board, gypsum, hose bib, hardboard, hollow core, handicap, heavy duty, header, hardware, hexagonal, handle, head joint, hook, hollow metal, horizontal, high point, height, heating, HVAC, hot water, hardy, hot water heater, international conference of building officials, inside diameter, include, insulation, interior, intermediate, joint, joist, kiln dried, kitchen, knockout, kickplate, length, ladder, laminate, lavatory, lag bolt, light control, left hand, live load, limestone, low point, light, intel, lightweight, meter, masonry, maximum, machine bolt, member, medicine cabinet, mechanical, medium, membrane, manufacturer, manhole, minimum, mirror, miscellaneous, molding, millimeter, masonry opening, modulator, movable, main switch board, mount, metal, mechanical, metal 'c' studs, metal drywall studs, north, natural, nickel, not in contract, number, nominal, noise reduction, noise reduction coefficient, not to scale, new, on center, outside diameter, owner furnished, overhead machine screw, overhead wood screw, opposite hand, opposite, opposite surface, parallel, particle board, pounds per cubic foot, perforated, perimeter, pounds per linear foot, plate glass, property line, plaster, plywood, point, phone panel, pounds per square foot, pounds per square inch, point, pressure treated, paper towel dispenser, partition, polyvinyl chloride, pavement, quarry tile, remove, remove and replace, riser, return air, radius, return air grille, ridge beam, rubber base, rabbet, roof drain, reinforcing steel bar, reference, refrigerator, register, reinforcing, resilient, return, revision, roofing, similar, specification, square, square feet, stainless steel, sound transmission coefficient, standard, steel, structure, suspended, synthetic system, tongue and groove, towel bar, to be determined, terra cotta, top of curb, telephone, thick, threshold, tolerance, top of plate, top of ridge, top of slab, top of wall, tube steel, top of steel, television, typical, terazzo, unfinished, unless noted otherwise, urinal, varnish, vinyl base, vapor barrier, vinyl composition tile, vertical, vertical grain, verify in field, vinyl, vertical joint, vent through roof, west, water, width, with, without, wood base, watercloset, wood, wired glass, hot water heater, wall hung, wrought iron, window, wire mesh, waterproof, working point, water repellent, water softener, water stop, wainscot, weight, wall to wall, welded wire fabric, plate, centerline, diameter, square foot, number, at, perpendicular

APPLICABLE CODES

ALL CONSTRUCTION SHALL CONFORM TO: 2019 CALIFORNIA BUILDING CODE (CBC), 2019 CALIFORNIA MECHANICAL CODE (CMC), 2019 CALIFORNIA PLUMBING CODE (CPC), 2019 CALIFORNIA ELECTRICAL CODE (CEC), 2019 CALIFORNIA RESIDENTIAL CODE (CRC) 2019 CALIFORNIA GREEN BUILDING CODE (CGBSC) 2019 CALIFORNIA ENERGY CODE, STATE CODES, SANTA BARBARA COUNTY (SBCO) BUILDING ORDINANCE #5092 AND SBCO GRADING ORDINANCE #4766.

PROJECT TEAM

OPERATOR: JUSTIN EI-DIWANY 1999 HWY. 101 BUELLTON, CA. 93427 408-228-2490

PLANNERS: BAY KINETIC KAPONO CURRY 7 W. FIGUEROA ST. SUITE 300 SANTA BARBARA, CA. 93101 KAPONO@BAYKE.COM

ARCHITECT: RPM ARCHITECTS ROBERT PEALE MEHL, ARCHITECT P.O. BOX 1919 SANTA YNEZ, CA 93460 (805) 688-7281

STRUCTURAL ENGINEERS: KEVIN VANDERVORT 250 STORKE RD. GOLETA, CA 93117 (805) 562-8462

ELECTRICAL ENGINEER JOHN MALONEY 627 OLIVE ST. SANTA BARBARA, CA. 93101 (805) 569-9216

AG MECHANICAL ENGINEERS, INC WAYNE ADAMS, PE 629 STATE ST., SUITE 210 SANTA BARBARA, CA. 93101 (805) 966-0844x201

DATA

OWNER: ISABELLA ORGANICS ADDRESS: 1999 HWY. 101 BUELLTON, CA. 93427 APN: 083-430-015 ACERAGE: 4.71 AC ZONE: AG-11-40 OCCUPANCY: F1

SDC SEISMIC ZONE: CLASSIFICATION D

TYPE OF CONSTRUCTION: TYPE VB FIRE ZONE: HIGH FIRE HAZARD SEVERITY ZONE FIRE SPRINKLERS: REQUIRED TO BE INSTALLED UNDER SEPARATE PERMIT

THIS PROJECT IS LOCATED IN THE STATE RESPONSIBILITY AREA AND IS IN A HIGH FIRE HAZARD SEVERITY ZONE PURSUANT CBC CHAPTER 7A.

STATISTICS

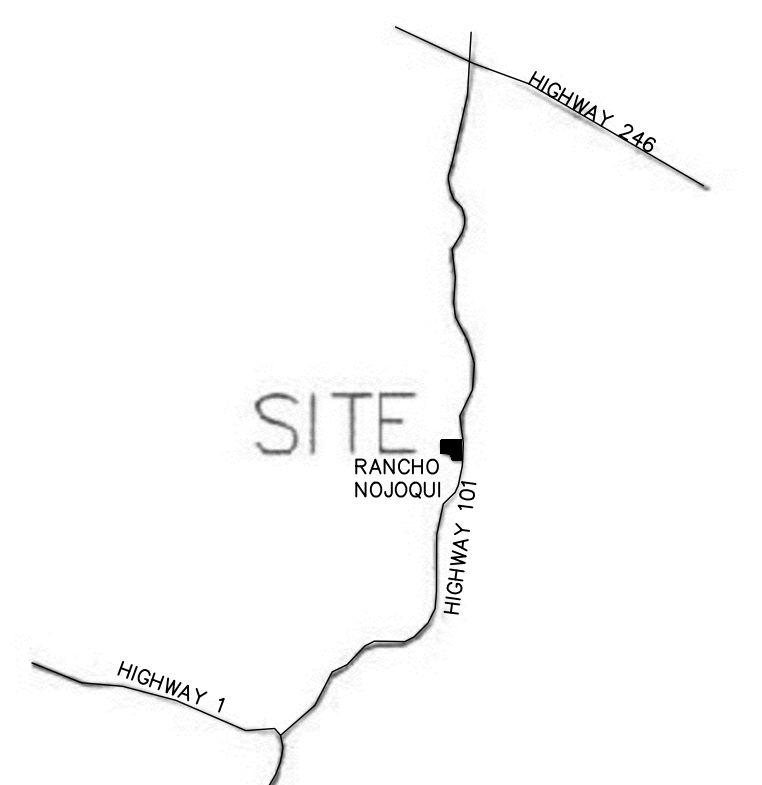
Table with columns for NET and GROSS, rows for (E) BARN, (E) RESIDENCE, PROPOSED CONTAINERS, PARKING, and TOTAL.

SCOPE OF WORK

PERMITTING OF (3) 8'x40' CONTAINERS FOR NURSERY & DRYING=DRYING, CURING, STORING AND PACKAGING. FERTIGATION=AG EQUIPMENT, STORAGE PUMPS & FERTILIZER. LUP APPROVAL, #18LUP-00525. ALSO, PERMITTING OF TWO (E) PARKING AREAS WITH ADA VAN ACCESSIBLE PARKING AND ADA PATH OF TRAVEL WITH RAMPS TO CONTAINERS AND SANITARY FACILITIES PROVIDED.

IMPORTANT NOTE: PER BUILDING OFFICIAL ON 2/26/21, THE PERMIT FOR THE BARN BUILDING WITH ACCESSIBLE RESTROOM SHALL BE ISSUED PRIOR TO SIGN OFF OF FINAL INSPECTION FOR THIS PROJECT.

VICINITY MAP (NO SCALE)



INDEX

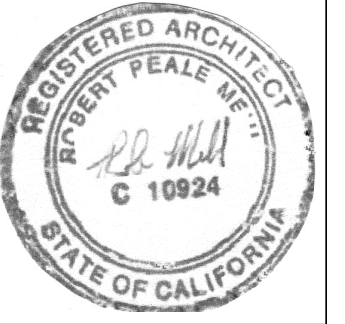
- A0.1 INDEX/DATA
SPEC. A GENERAL SPEC
SPEC. B GENERAL SPEC
A1.1 SITE PLAN
STDMP SITE TRANS. DEMAND MGMT. PLAN
A1.2 STORMWATER POLLUTION PREVENTION
A2.1 CONTAINER FLOOR PLANS
A2.2 CONTAINER ELEVATIONS
COND-1 LAND USE-CONDITIONS OF APPROVAL
E-1 GENERAL NOTES
E-2 ELECTRICAL SITE PLAN
E-3 ENLARGED PLAN
S1.1 GENERAL NOTES, SPECS. & TYP. DET.
S1.2 GENERAL NOTES, SPECS. & TYP. DET.
S2 FOUNDATION PLAN & STRUCT. DETAILS
SEP-1 TITLE SHEET/PROJECT INFORMATION
SEP-2 PROPERTY SITE PLAN
SEP-3 TREATMENT SYSTEM LAYOUT
SEP-4 TREATMENT SYSTEM SEPTIC TANK DET.
SEP-5 TREATMENT SYSTEM SEPTIC TANK DET.
SEP-6 TREATMENT SYSTEM ADVENTEX TANK DET.
SEP-7 TREATMENT SYSTEM CONTROLLER
SEP-8 TREATMENT SYSTEM TYPICAL DET.
SEP-9 PERCOLATION REPORT

SPECIAL NOTES:

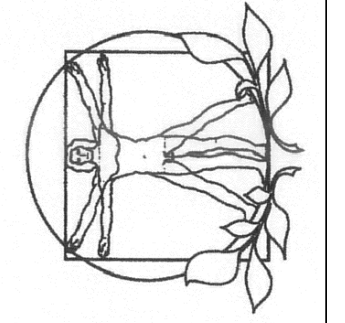
SEE SHEET A1.1 FOR STATEMENT OF SPECIAL INSPECTION PURSUANT CBC 1704 AND/OR CBC 1705. ACCESSIBILITY FOR DISABLED PERSONS WILL BE PROVIDED AS REQUIRED BY THE 2019 CBC. APPROVED WASTE MANAGEMENT COMPANY - MARBORG RECYCLING CENTER

USE OF CONTAINERS: NURSERY & DRYING=DRYING, CURING, STORING & PACKAGING FERTIGATION=AG EQUIPMENT STORAGE PUMPS, FERTILIZER NOT A PLACE OF EMPLOYMENT

Table with columns for REVISIONS, #, and DATE, showing revision history from 3-24-2023 to 1-17-2023.



R.P.M. Architects 3668 Sagunto St. Ste. K Santa Ynez, CA 93460 Phone 805 688 7281



INDEX SHEET

SIERRA BOTANICALS 1999 HWY. 101 BUELLTON, CA. 93427

Table with columns for DATE, SCALE, DRAWN, and SHEET, showing project details like DATE OCT. 23, 2023 and SHEET A0.1.

STATEMENT OF SPECIAL INSPECTION

SPECIAL INSPECTION AND TESTS, STATEMENTS OF SPECIAL INSPECTIONS, RESPONSIBILITIES OF CONTRACTORS, SUBMITTALS TO THE BUILDING OFFICIALS AND STRUCTURAL OBSERVATIONS SHALL MEET THE APPLICABLE REQUIREMENTS PURSUANT CBC 1704.

PLUMBING FIXTURES:

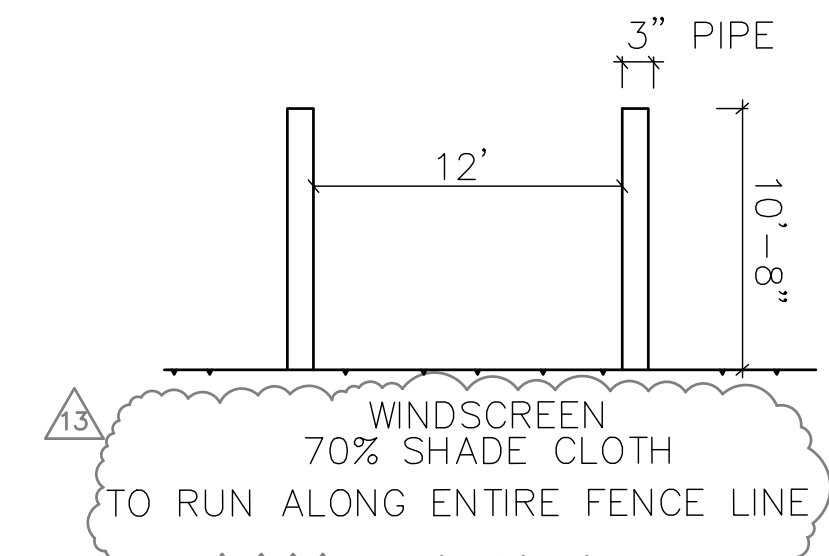
3 CONTAINERS @ 320 S.F. EACH = 960 S.F.
 = 300 (PER PLUMBING CODE)
 = 3.2

1 BARN @ 3,149 S.F. = 3,149 S.F.
 = 2000 (PER PLUMBING CODE)
 = 1.57

3.2+1.57 = 4.77
 10 OR LESS PEOPLE = 1 RESTROOM
 THEREFORE: 1 ADA UNISEX RESTROOM REQUIRED, PER PLUMBING CODE

- LEGEND:**
- PROPERTY LINE -----
 - FENCE - - - - -
 - SECURITY FENCE - - - - -
 - PATH OF TRAVEL
 - S= EXISTING SECURITY EQUIPMENT
 - E= EXISTING ELECTRICAL, LOW VOLTAGE & LIGHTING CONTROL EQUIPMENT
 - ⊕ EXTERIOR LIGHTING; FULL CUT-OFF, DIRECT DOWNWARD ON AN AUTOMATIC SHUT-OFF TIMERS

CREEK SETBACK/T.O.B. NOTE:
 CREEK SETBACK LOCATION SUPPLIED BY FARGAN SURVEYS
 SEE SHEET 1 OF 1 SURVEY-TOPO MAP



NOTES:

- 1 VAN ACCESSIBLE PARKING 12'x18'
- 2 INTERNATIONAL SYMBOL OF ACCESSIBILITY, 36"x36", WHITE SYMBOL OF ACCESSIBILITY TO BE 36" HIGHx36" WIDE ON A BLUE BACKGROUND, SEE DET.2/A1.2
- 3 NEW CONCRETE
- 4 TRUNCATED DOMES, AT FLUSH EDGE
- 5 "NO PARKING" SHALL BE WHITE LETTERING 12" MIN. HEIGHT.
- 6 ACCESS ISLE; 60" MIN., WITH BLUE BORDER AND HATCHED LINES AT 36" ON CENTER MAX. LETTERING 12" HIGH IN WHITE. SLOPE NOT GREATER THAN 1:48.
- 7 48" MIN. CLEAR WIDTH FOR WALKING (60" CLR. @ DOOR)
- 8 PATH OF TRAVEL ●●●● ASPHALT
- 9 PARKING SIGN A AND SIGN B. BOTTOM OF SIGN MIN. 80" AFF
- 10 ACCESSIBLE ENTRANCE SIGNAGE
- 11 WALKING SURFACES WITH A RUNNING SLOPE SHALL NOT BE STEEPER THAN 1:20. CROSS SLOPES OF WALKING SURFACES SHALL NOT BE STEEPER THAN 1:48
- 12 ALL FLOOR AND GROUND SURFACES SHALL BE STABLE, FIRM & SLIP RESISTANT.
- 13 DIRECTIONAL SIGNAGE, SEE A1.2 DET.5
- 14 4" BLUE LINE BORDER.
- 15 4" HATCHED DIAGONAL LINES AT 36" MAX. ON-CENTER PAINTED A CONTRASTING COLOR WITH THE PARKING SURFACE, WHITE ON AC BLUE ON CONCRETE.
- 16 DEFERRED FIRE SUBMITTAL, PER STEVEN SAUER @ SBC FIRE. WATER TANK-DEDICATED FOR FIRE SUPPRESSION W/BACKUP POWER. BACKUP POWER ALLOWED: DIESEL POWERED PRESSURE PUMP, TO BE LOCATED BESIDE TANK. GENERATORS ARE NOT ALLOWED. SYSTEM TO PROTECT CONTAINERS, RESIDENCE, AND BARN. SEE RDL FIRE PROTECTION PLANS UG2 1 & UG2.
- 17 PACIFIC PATROLUM ADA COMPLIANT TOILET FACILITIES, TO BE MAINTAINED BY A THIRD PARTY SUPPLIER, ONCE A WEEK DURING HARVEST SEASON & EVERY TWO WEEKS DURING NON-HARVEST SEASON
- 18 WASH OUT AREA
- 19 PLANTED/LANDSCAPE AREA AS BARRIER FROM HAZARDOUS VEHICLE AREA
- 20 6' CONCRETE RAMP WITH CURB
- 21 ASPHALT TO BE RAISED IN THIS AREA. TO BE FLUSH W/GARAGE DOORS. MAX SLOPE 2% FOR 20 FT.
- 22 HOOP HOUSES AND CANABIS CULTIVATION MAY NOT OCCUR ON TOP OF THE TWO PRIMARY INSTALLED LEACH FIELDS.
- 23 CULTIVATION CAN OCCUR OVER THE FUTURE RESERVE AREA, BUT CULTIVATION MAY HAVE TO BE MODIFIED/REMOVED LATER IF THE FUTURE EXPANSION AREA IS INSTALLED.
- 24 TACTILE CHARACTERS SHALL BE RAISED 1/2" MIN. ABV. THEIR BACKGROUND. SHALL BE UPPERCASE, STYLE/SANS SERIF, HEIGHT 1/8" MIN. TO 2" MAX. SHALL BE CONTRACTED/GRADE 2.
- 25 FIRE APPARATUS ACCESS: HAMMERHEAD STYLE TURNAROUND, SEE DEVELOPMENT STANDARD #1
- 26 7'x7' LEAN TO COVERING.

WATER & SEPTIC NOTES:

- A WELL SOURCE
- B 1 1/2" GALV. PIPE (2') TO UNION W/ 1 1/2" PVC PIPE & CHECK VALVE, APPROX. 105'
- C BACK FLOW PREVENTER W/ 1 1/2" COPPER PIPE
- D AQUA BOOST PUMP CONTROLLER W/ 1 1/2" PVC
- E DOMESTIC WATER TANK 5,000 GAL.
- F (E) WATER STORAGE STORAGE 1,000 GAL.
- G WATER SOFTNER & R.O. UNIT, APPROX. 90'
- H AG WATER TANKS
- I HOUSE W/ 1 1/2" PVC PIPE-TO REAR OF HOUSE. APPROX. 120'
- J NEW FIRE HYDRANT
- K FPC
- L BYPASS DRAFTING HYDRANT

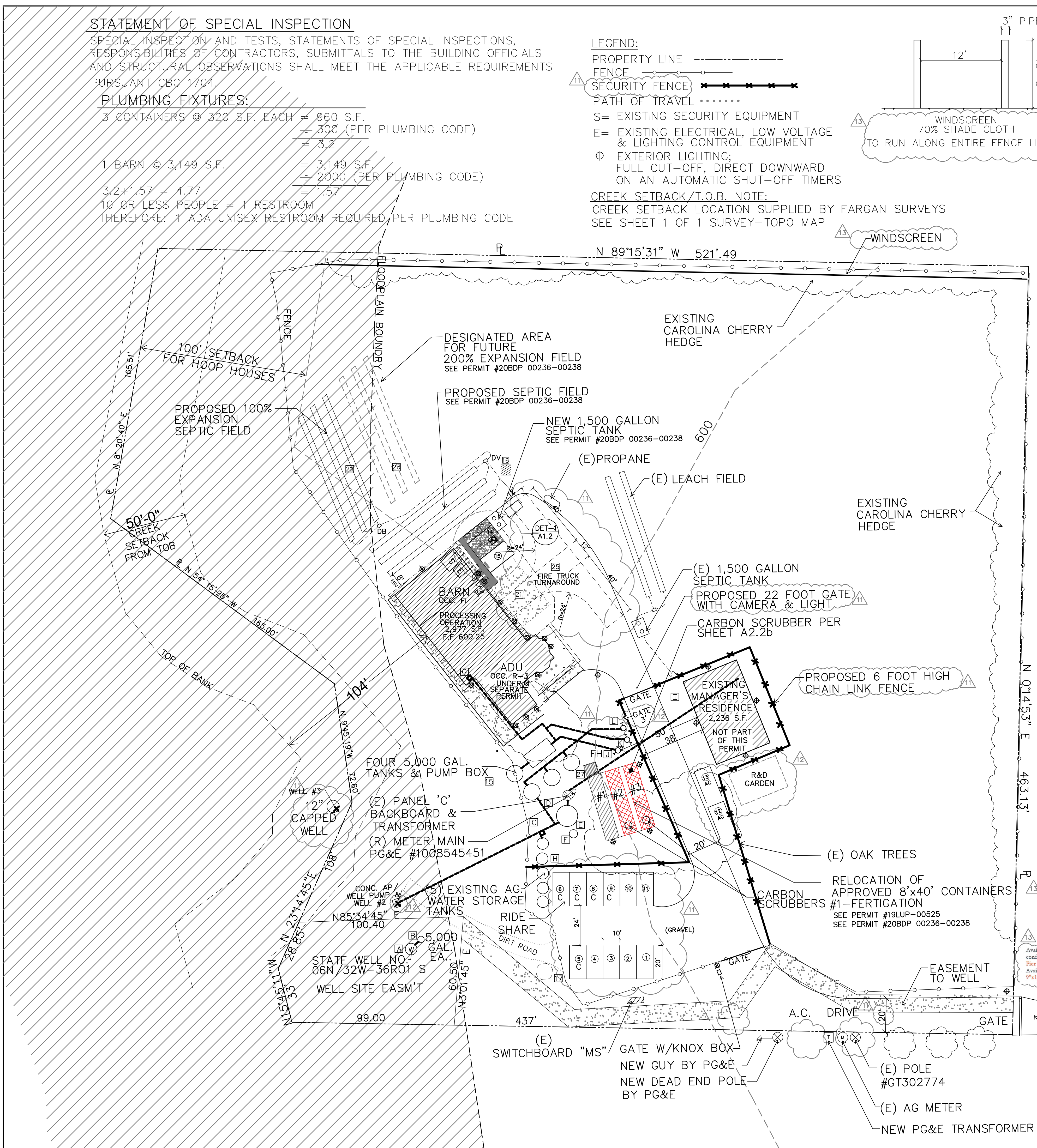


LANTERN MANUF: STEVEN HANDELMAN LTGING.
 STYLE: LA HACIENDA
 ALTERED FOR NIGHT SKY COMPLIANT & EQUIPPED WITH A MOTION SENSOR

NOTE:
 BOTTOM OF LED LIGHT TO BE ABOVE UPPER RIM

PROPOSED FENCING

PROPOSED LIGHTING
 NIGHT SKY COMPLIANCE

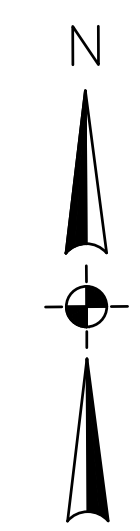


ENTRANCE ROAD AND GATE

SITE PLAN

SCALE 1:30

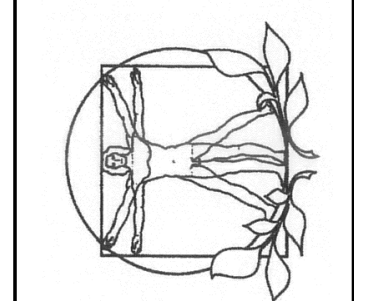
SCOPE OF WORK:
 PERMIT (3) ONSITE CONTAINERS
 PERMIT (E) BARN
 AND PROPOSED ACCESSARY DWELLING UNIT



DATE	#	REVISIONS
3-24-2022	1	3-1-2023/7/6-24-2024/A3
10-27-2022	2	10-23-2023/6/A
11-21-2022	3	11-25-2023/A
2-8-2023	4	1-4-2024/7/A
3-9-2023	5	3-25-2024/1/A
3-9-2023	6	4-9-2024/1/A



R.P.M. Architects
 3666 Sagunto St. Ste. K
 Santa Ynez, CA 93460
 Phone 805 686 1721



SITE PLAN
 BARN

SIERRA BOTANICALS
 1999 HWY. 101
 BUELLTON, CA. 93427

DATE: JUNE 26, 2024

SCALE:

DRAWN:

SHEET:

A1.1a

STATEMENT OF SPECIAL INSPECTION

SPECIAL INSPECTION AND TESTS, STATEMENTS OF SPECIAL INSPECTIONS, RESPONSIBILITIES OF CONTRACTORS, SUBMITTALS TO THE BUILDING OFFICIALS AND STRUCTURAL OBSERVATIONS SHALL MEET THE APPLICABLE REQUIREMENTS PURSUANT CBC 1704.

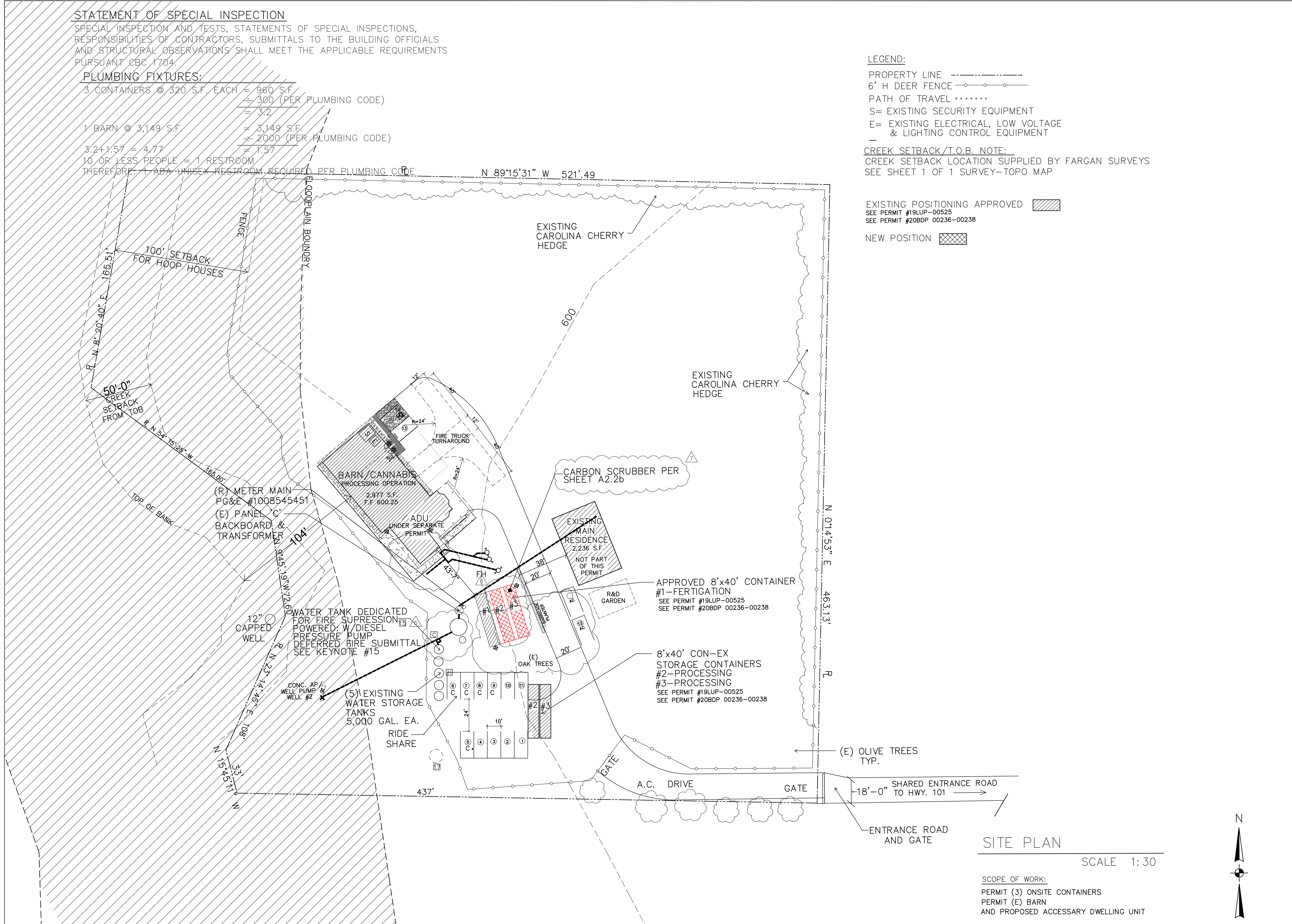
PLUMBING FIXTURES:

3 CONTAINERS @ 320 S.F. EACH = 960 S.F.
= 300 (PER PLUMBING CODE)
= 3.2

1 BARN @ 3,149 S.F. = 3,149 S.F.
= 2000 (PER PLUMBING CODE)

3.2+1.57 = 4.77 = 1.57

10 OR LESS PEOPLE = 1 RESTROOM
THEREFORE 1 ADA UNISEX RESTROOM REQUIRED PER PLUMBING CODE.



LEGEND:

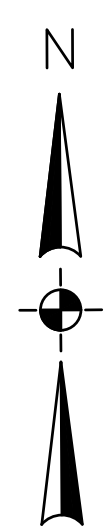
- PROPERTY LINE - - - - -
- 6' H DEER FENCE - - - - -
- PATH OF TRAVEL ······
- S= EXISTING SECURITY EQUIPMENT
- E= EXISTING ELECTRICAL, LOW VOLTAGE & LIGHTING CONTROL EQUIPMENT

CREEK SETBACK/T.O.B. NOTE:
CREEK SETBACK LOCATION SUPPLIED BY FARGAN SURVEYS
SEE SHEET 1 OF 1 SURVEY-TOPO MAP

- EXISTING POSITIONING APPROVED [Hatched Box] SEE PERMIT #19LUP-00525 SEE PERMIT #20BDP 00236-00238
- NEW POSITION [Cross-hatched Box]

SITE PLAN
SCALE 1:30

SCOPE OF WORK:
PERMIT (3) ONSITE CONTAINERS
PERMIT (E) BARN
AND PROPOSED ACCESSARY DWELLING UNIT



DATE	#	REVISIONS
3-24-2023	1	9-1-2023
10-27-2023	2	10-23-2023
11-21-2023	3	11-25-2023
12-8-2023	4	1-4-2024
1-17-2024	5	3-25-2024
3-9-2024	6	4-5-2024

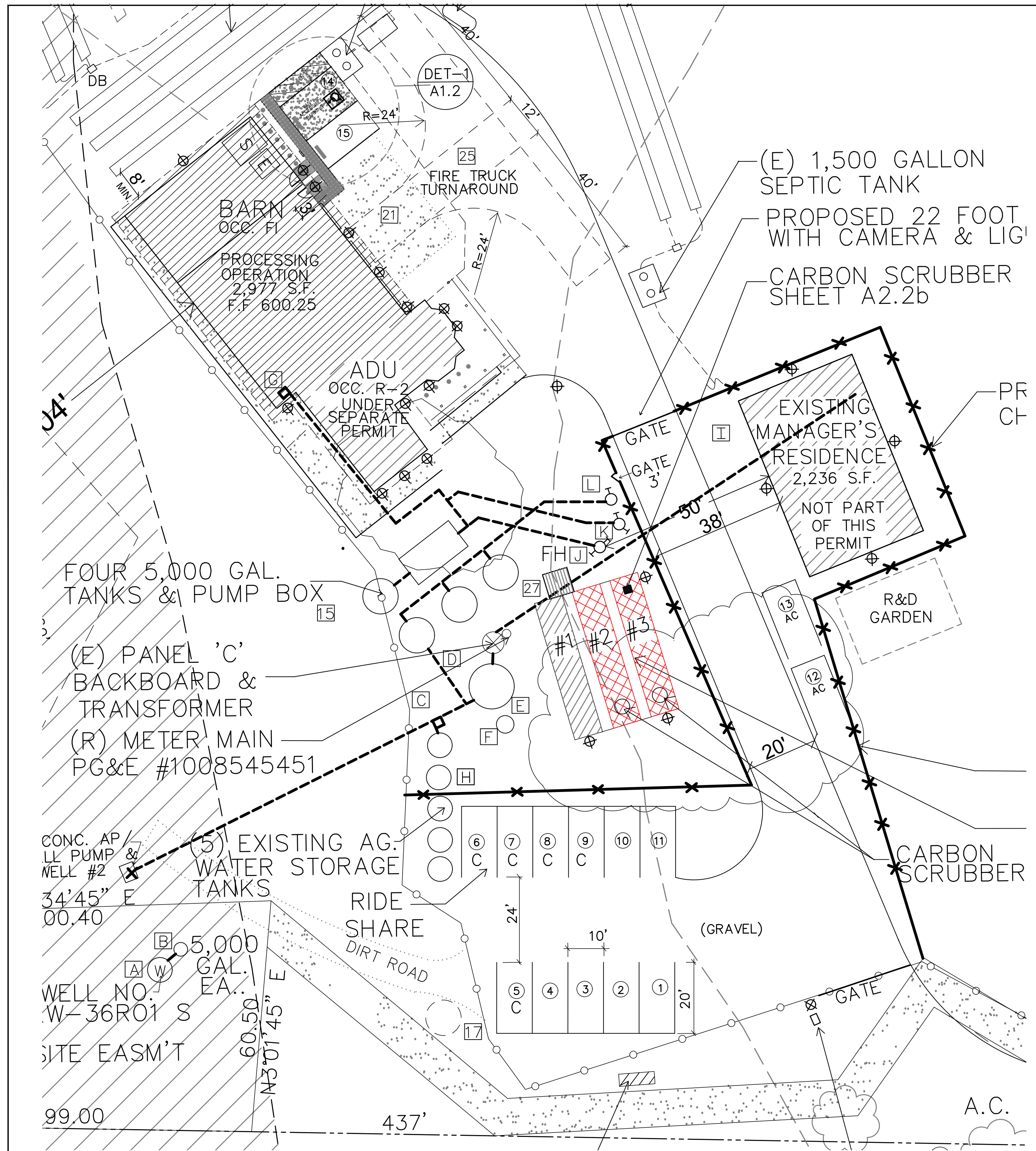


R.P.M. Architects
3568 Sagunto St. Ste. K
Santa Ynez, CA 93460
Phone 805 688 7291

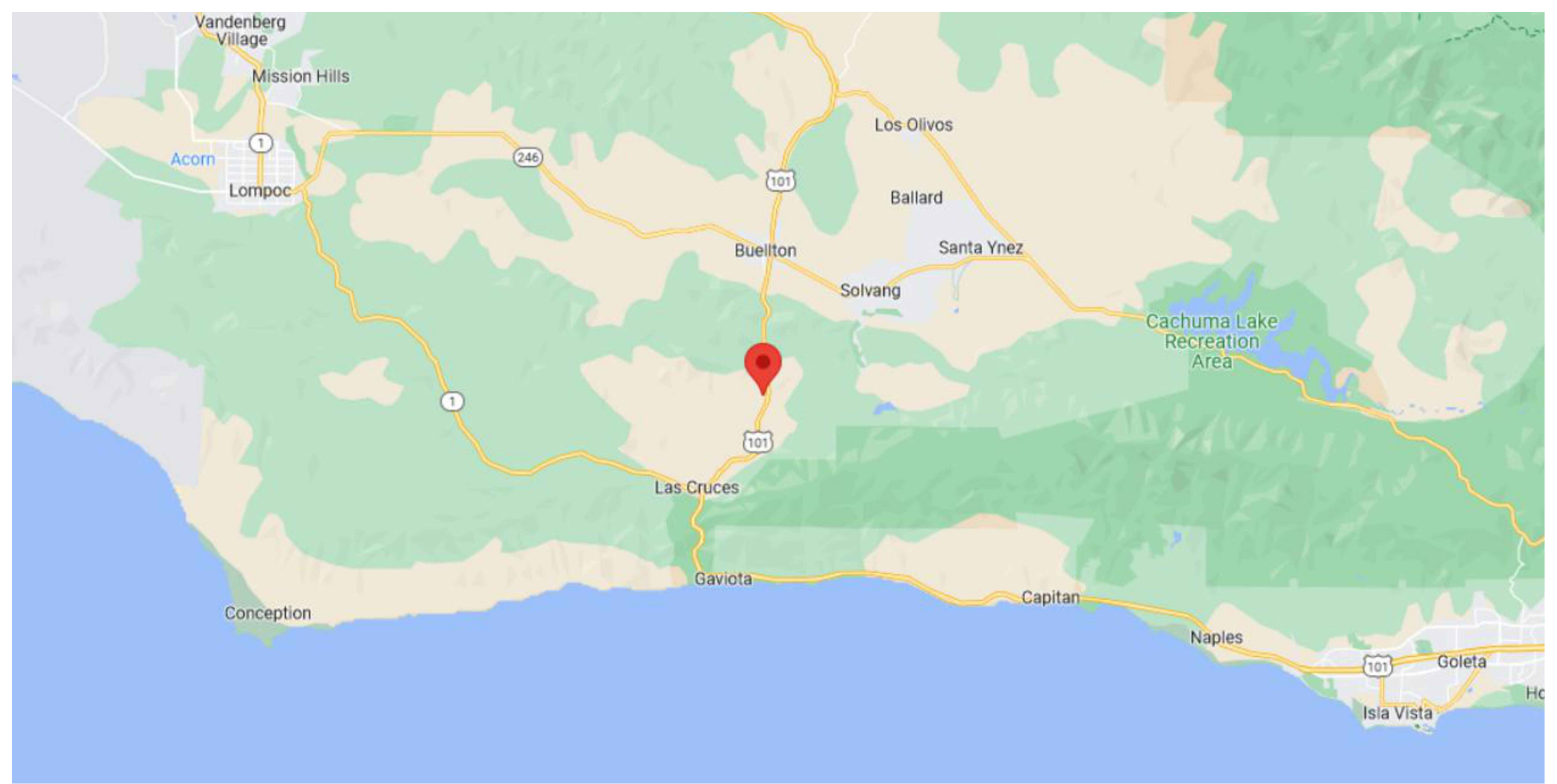
SITE PLAN
SHIPPING CONTAINERS

SIERRA BOTANICALS
1999 HWY. 101
BUELLTON, CA. 93427

DATE:	APRIL 5, 2024
SCALE:	
DRAWN:	
SHEET:	A1.1b



SITE PLAN W/15 PARKING SPACES
SCALE 1:20

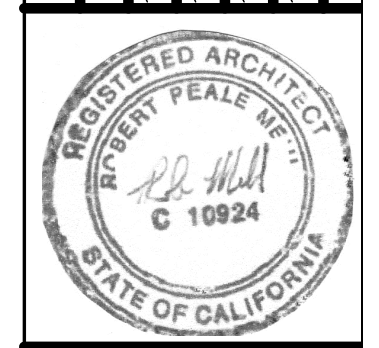


TRANSPORTATION ROUTE MAP

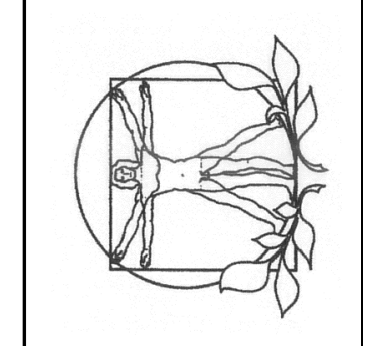
TDM NOTES:

- 1) LOT LOCATION
 - a. PARKING LOTS ON SITE CONSTRUCTED WITH CLASS II ROAD BASE
 - b. THE PARKING LOT WILL CONSIST OF 5 PARKING SPOTS RESERVED FOR CARPOOL, 9 FOR REGULAR PARKING, AND ONE PARKING SPOT THAT IS VAN ACCESSIBLE PARKING FOR A TOTAL OF 15 PARKING SPACES
 - c. 11 OF THESE PARKING SPACES WERE APPROVED VIA PREVIOUS LUP, 4 OF THESE ARE NEW PARKING SPACES.
- 2) TOTAL NUMBER OF EMPLOYEES
 - a. MAXIMUM 10 PERMANENT EMPLOYEES WILL BE ON-SITE DURING MARCH - DECEMBER.
- 3) HOURS OF OPERATION
 - a. 6:00 AM - 6:30 PM, MONDAY - SUNDAY
- 4) TRIP ORIGINS
 - a. LABOR COMES FROM BUELLTON, SANTA MARIA, LOMPOC, AND SANTA BARBARA
- 5) TRIP GENERATION AND ROUTES
 - a. DELIVERIES TO THE SITE WILL AVERAGE ONE TRUCK PER DAY OR LESS
 - b. DURING HARVEST PERIODS (MAY THROUGH NOVEMBER) UP TO THREE TRUCKS PER WEEK WILL PICK UP PROCESSED CANNABIS, THEY WILL TRAVEL NORTH AND SOUTH VIA THE US-101 TO DESTINATIONS SUCH AS SALINAS, VENTURA, SACRAMENTO, AND SAN DIEGO
- 6) TRANSPORTATION DEMAND MANAGEMENT MEASURES
 - a. TEMPORARY EMPLOYEES FROM SANTA MARIA & LOMPOC WILL USE VANPOOLS TO ACCESS SITE
 - b. WORKERS RESIDING IN AREAS NOT SERVED BY VANPOOLS WILL BE ENCOURAGED TO RIDESHARE TO REDUCE THE COST THE COMMUTING
 - c. THE INCENTIVES FOR RIDESHARE WILL BE GIFT CARDS & EMPLOYEE OF THE MONTH RECOGNITION
 - d. THE ONSITE MANAGER WILL KEEP A LOG OF EMPLOYEES PEOPLE AND VEHICLES THAT COMMUTE TO THE JOB SITE
 - e. THE RIDESHARE LOG WILL BE AVAILABLE TO COUNTY REGULATORS
 - f. THE ONSITE MANAGER WILL ALSO KEEP A LOG OF MONTHLY RECOGNITION RECIPIENTS AND WILL RECOGNIZE THIS ACHIEVEMENT DURING ALL HANDS MEETINGS

#	REVISIONS	DATE
1	9-1-2023	7/1
2	10-25-2023	7/3
3	11-25-2023	7/3
4	1-4-2024	7/3
5	3-25-2024	7/3
6	4-5-2024	7/3



R.P.M. Architects
 3568 Sagunto St. Ste. K
 Santa Ynez, CA 93460
 Phone 805 688 7281

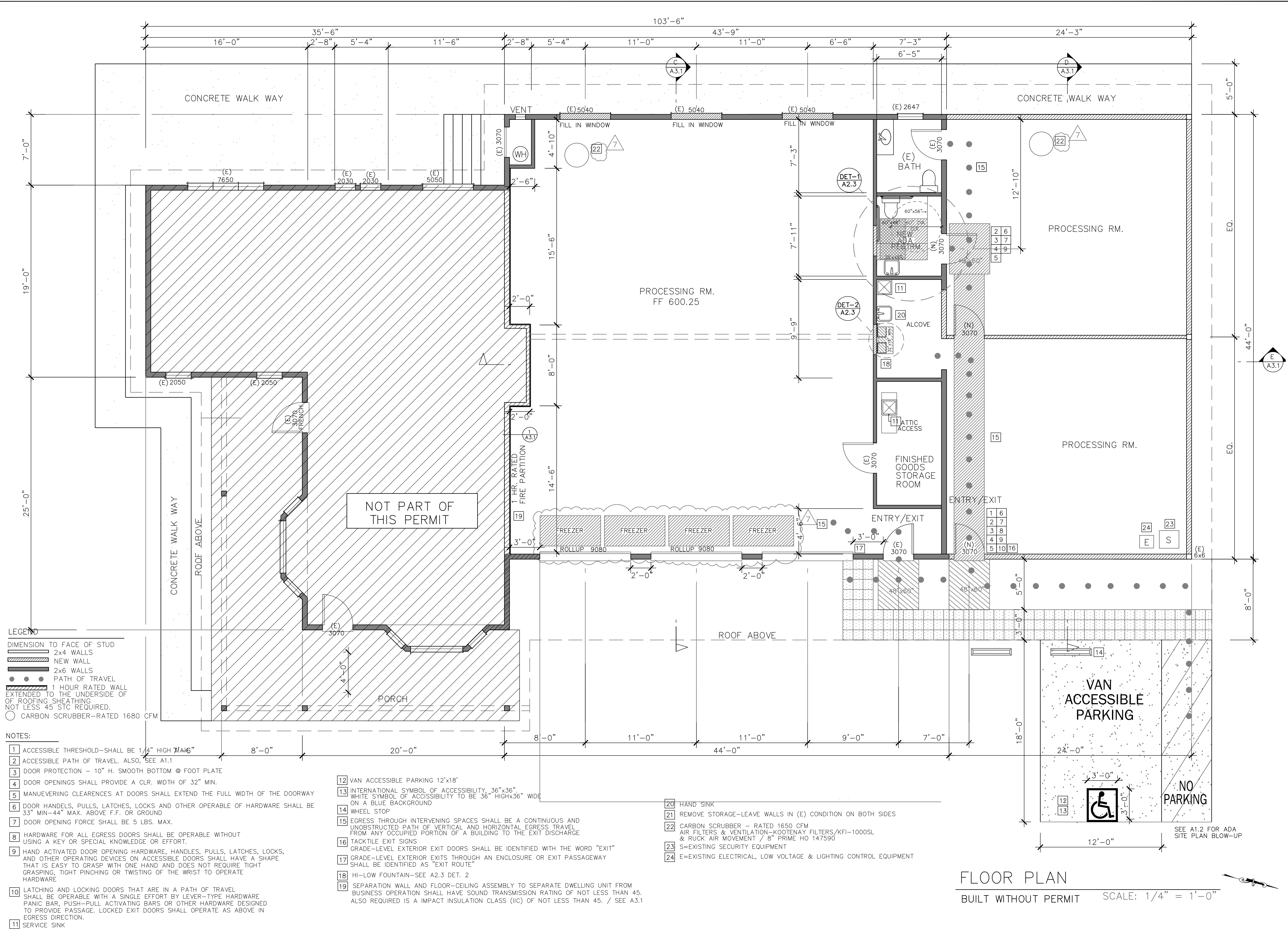


(STDMP)
 SITE TRANSPORTATION
 DEMAND MANAGEMENT
 PLAN

SIERRA BOTANICALS
 1999 HWY. 101
 BUELLTON, CA. 93427

DATE	APRIL 5, 2024
SCALE	
DRAWN	
SHEET	12





- LEGEND**
- DIMENSION TO FACE OF STUD
 - 2x4 WALLS
 - NEW WALL
 - 2x6 WALLS
 - PATH OF TRAVEL
 - 1 HOUR RATED WALL EXTENDED TO THE UNDERSIDE OF ROOFING SHEATHING NOT LESS 45" STC REQUIRED.
 - CARBON SCRUBBER-RATED 1680 CFM

- NOTES:**
- 1 ACCESSIBLE THRESHOLD-SHALL BE 1 1/4" HIGH MAX
 - 2 ACCESSIBLE PATH OF TRAVEL. ALSO, SEE A1.1
 - 3 DOOR PROTECTION - 10" H. SMOOTH BOTTOM @ FOOT PLATE
 - 4 DOOR OPENINGS SHALL PROVIDE A CLR. WIDTH OF 32" MIN.
 - 5 MANUEVERING CLEARANCES AT DOORS SHALL EXTEND THE FULL WIDTH OF THE DOORWAY
 - 6 DOOR HANDLES, PULLS, LATCHES, LOCKS AND OTHER OPERABLE OF HARDWARE SHALL BE 33" MIN-44" MAX. ABOVE F.F. OR GROUND
 - 7 DOOR OPENING FORCE SHALL BE 5 LBS. MAX.
 - 8 HARDWARE FOR ALL EGRESS DOORS SHALL BE OPERABLE WITHOUT USING A KEY OR SPECIAL KNOWLEDGE OR EFFORT.
 - 9 HAND ACTIVATED DOOR OPENING HARDWARE, HANDLES, PULLS, LATCHES, LOCKS, AND OTHER OPERATING DEVICES ON ACCESSIBLE DOORS SHALL HAVE A SHAPE THAT IS EASY TO GRASP WITH ONE HAND AND DOES NOT REQUIRE TIGHT GRASPING, TIGHT PINCHING OR TWISTING OF THE WRIST TO OPERATE HARDWARE
 - 10 LATCHING AND LOCKING DOORS THAT ARE IN A PATH OF TRAVEL SHALL BE OPERABLE WITH A SINGLE EFFORT BY LEVER-TYPE HARDWARE PANIC BAR, PUSH-PULL ACTIVATING BARS OR OTHER HARDWARE DESIGNED TO PROVIDE PASSAGE. LOCKED EXIT DOORS SHALL OPERATE AS ABOVE IN EGRESS DIRECTION.
 - 11 SERVICE SINK
 - 12 VAN ACCESSIBLE PARKING 12'x18'
 - 13 INTERNATIONAL SYMBOL OF ACCESSIBILITY, 36"x36" WHITE SYMBOL OF ACCESSIBILITY TO BE 36" HIGHx36" WIDE ON A BLUE BACKGROUND
 - 14 WHEEL STOP
 - 15 EGRESS THROUGH INTERVENING SPACES SHALL BE A CONTINUOUS AND UNOBSTRUCTED PATH OF VERTICAL AND HORIZONTAL EGRESS TRAVEL FROM ANY OCCUPIED PORTION OF A BUILDING TO THE EXIT DISCHARGE
 - 16 TACTILE EXIT SIGNS GRADE-LEVEL EXTERIOR EXIT DOORS SHALL BE IDENTIFIED WITH THE WORD "EXIT"
 - 17 GRADE-LEVEL EXTERIOR EXITS THROUGH AN ENCLOSURE OR EXIT PASSAGEWAY SHALL BE IDENTIFIED AS "EXIT ROUTE"
 - 18 HI-LOW FOUNTAIN-SEE A2.3 DET. 2
 - 19 SEPARATION WALL AND FLOOR-CEILING ASSEMBLY TO SEPARATE DWELLING UNIT FROM BUSINESS OPERATION SHALL HAVE SOUND TRANSMISSION RATING OF NOT LESS THAN 45. ALSO REQUIRED IS A IMPACT INSULATION CLASS (IIC) OF NOT LESS THAN 45. / SEE A3.1

- 20 HAND SINK
- 21 REMOVE STORAGE-LEAVE WALLS IN (E) CONDITION ON BOTH SIDES
- 22 CARBON SCRUBBER - RATED 1650 CFM AIR FILTERS & VENTILATION-KOOTENAY FILTERS/1000SL & RUCK AIR MOVEMENT / 8" PRIME HO 147590
- 23 S=EXISTING SECURITY EQUIPMENT
- 24 E=EXISTING ELECTRICAL, LOW VOLTAGE & LIGHTING CONTROL EQUIPMENT

FLOOR PLAN
 BUILT WITHOUT PERMIT SCALE: 1/4" = 1'-0"

REVISIONS	#	DATE
	1	11-25-2023
	2	1-4-2024
	3	6-15-2023
	4	8-10-2023
	5	0-18-2023

R.P.M. Architects
 3588 Sagunto St. Ste. K
 Santa Ynez, CA 93460
 Phone 805 688 7281

FLOOR PLAN

SIERRA BOTANICALS BARN
 1999 HWY. 101
 BUELLTON, CA. 93427

DATE: JAN. 4, 2024
SCALE:
DRAWN:
SHEET: A2.2



Kootenay Filter

kootenayfilter.com/product/kfi-1000sl-without-flange/



KFI 1000SL Without Flange

Carbon: Pelletized Activated Carbon CKV-4
 Prefilter installed: Yes
 Replacement Prefilter SKU: PF1000SL

CFM/M3 Ratings:
 Max Exhaust CFM – 840
 Max Recirculate CFM – 1680
 Max Exhaust M3 – 1400
 Max Recirculating M3 – 2800

SKU: SL1000 Category: [Standard Line Filters](#)

Description

SKU:	SL1000	
Carbon:	Pelletized Activated Carbon CKV-4	
Flanges Available:	8" Wide / 10" / 12" / 14"	SKU: FL8W / FL10 / FL12 / FL14
Prefilter Installed:	Yes	
Replacement Prefilter SKU:	PF1000SL	
Measurements and Weights:	Imperial	Metric
Outside Diameter:	15.8"	40cm
Lengths:	39.4	100cm
Total Weight:	103.4lbs	47kg
Carbon Weight:	72.8lbs	33kg
Carbon Bed:	2.55"	6.5cm
Max Operating Temperature:	176F	80°C
Minimum Recommended Airflow:	420CFM	
Pressure Drop at Max CFM:	180pa / 0.75"wg	

1/3

2/3

SKU:	SL1000	
Possible Fan Combinations:	Exhaust	Recirculating
	Renegade FR 8 Renegade EC Pro 8 Renegade EC Pro 10 Renegade Silent 8 Renegade Silent 10	Renegade FR 10 Renegade FR 12 Renegade FR 14 Renegade EC Pro 10 Renegade EC Pro 14 Renegade Silent 10 Renegade Silent 12

Standard Line Filters - Details

KFI Standard Line filters are made with virgin activated CKV-4 carbon. Each filter is hand made in North America using a proven filing process making this product one of the best filters on the market. At KFI we take pride in our products and ensure our customers receive the highest quality products available.

- Virgin activated, pelletized CKV-4 Carbon
- Dedusted and screened
- Low pressure drop rated @0.1 sec. contact time
- Long service life
- Max operating temperature 80°C / 176°F
- Max allowed humidity 70% (short term only)
- Prefilter installed
- Robust galvanized steel housing
- Single packaged and sealed for storage
- Made in North America
- 2.55" carbon bed
- KFI flanges sold separately, available in 4" to 16"

3/3

DATA SHEET

8" Prime HO | 147590

Operating Point	1	2	3	4	5	
Current I	A	1.7	1.5	1.8	1.9	1.8
Power consumption P ₁	W	202	176	208	221	217
Rotation speed n	1/min	3023	3177	2987	2918	2982
SWL inlet L _{WA5}	dB(A)	79	78	77	75	77
SWL outlet L _{WA6}	dB(A)	80	79	78	76	78
SWL casing break out L _{WA2}	dB(A)	85	84	80	82	82

Sound power (L _W) dB(A)		Medium Frequency Band								
	Σ	63	125	250	500	1k	2k	4k	8k	
Inlet	L _{WA5}	77	44	44	66	69	73	70	71	61
Outlet	L _{WA6}	78	37	51	67	70	73	72	69	60
Housing radiation	L _{WA2}	82	54	45	45	50	58	56	50	39

8" Prime HO 147590	
Voltage U _N	120 V 1~
Current I _{max}	2.0 A
Ambient temperature T _A	40 °C
Medium temperatures T _M	40 °C
Speed Control	3-2-1
Motor protection	TAI
Insulation class motor	F
Weight	4.7 kg
Number of poles	2
IP motor	IP33
IP terminal box	-
IP complete unit	IPX4
Min. operating temperature	-25 °C

- Mixed flow fan with high efficiency rates
- 3D shaped impeller blades
- With plastic housing
- Integrated 3-speed switch
- One-phase AC motor
- Including mounting bracket

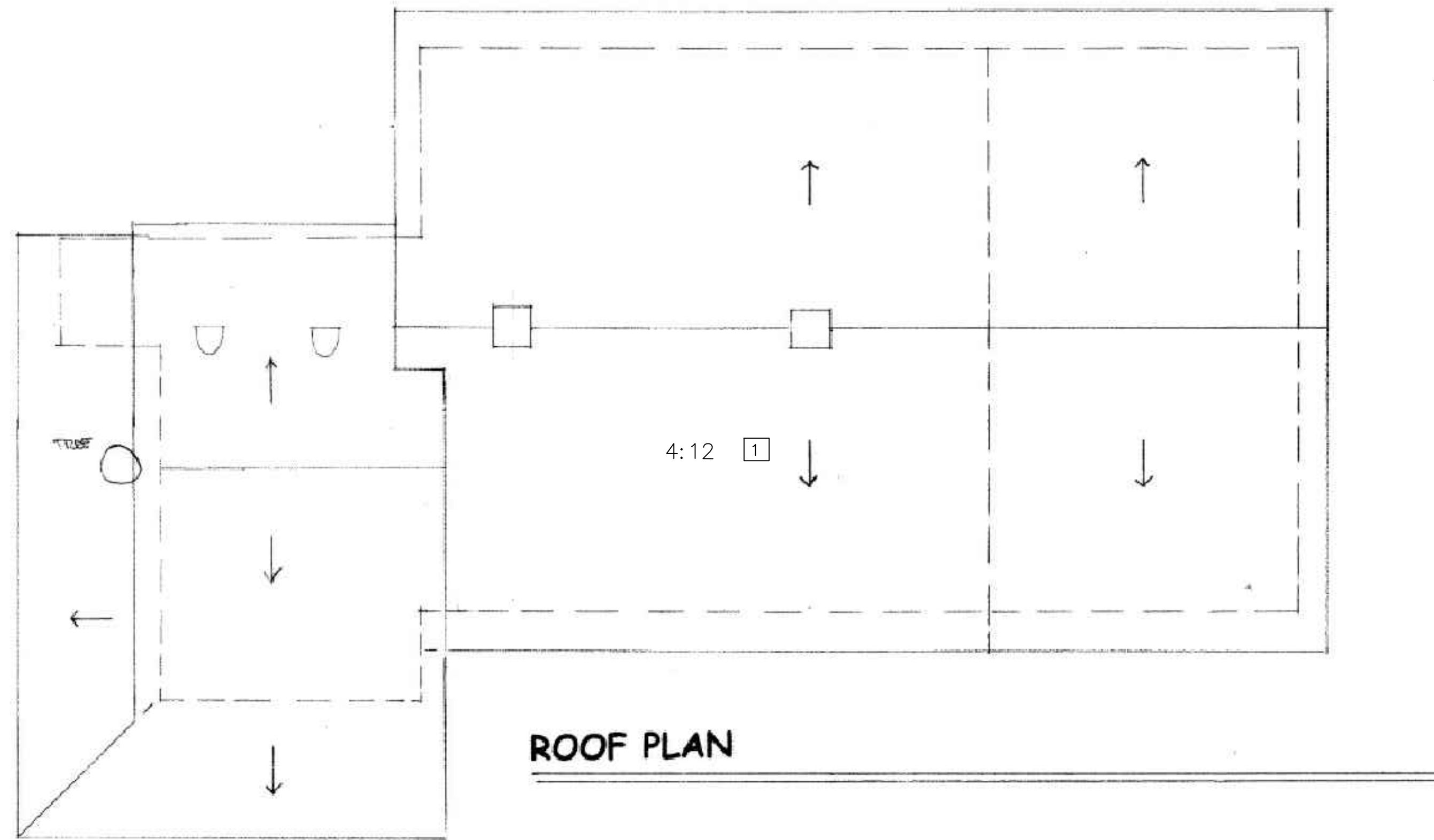
REVISIONS	#	DATE
	1	11-8-2021
	2	10-13-2022
	3	6-15-2023

R.P.M. Architects
 3568 Sagunto St. Ste. K
 Santa Ynez, CA 93460
 Phone 805 688 7291

AIR FILTERS & FAN

SIERRA BOTANICALS BARN
 1999 HWY. 101
 BUELLTON, CA. 93427

DATE: JUNE 15, 2023
 SCALE:
 DRAWN:
 SHEET: A2.2b

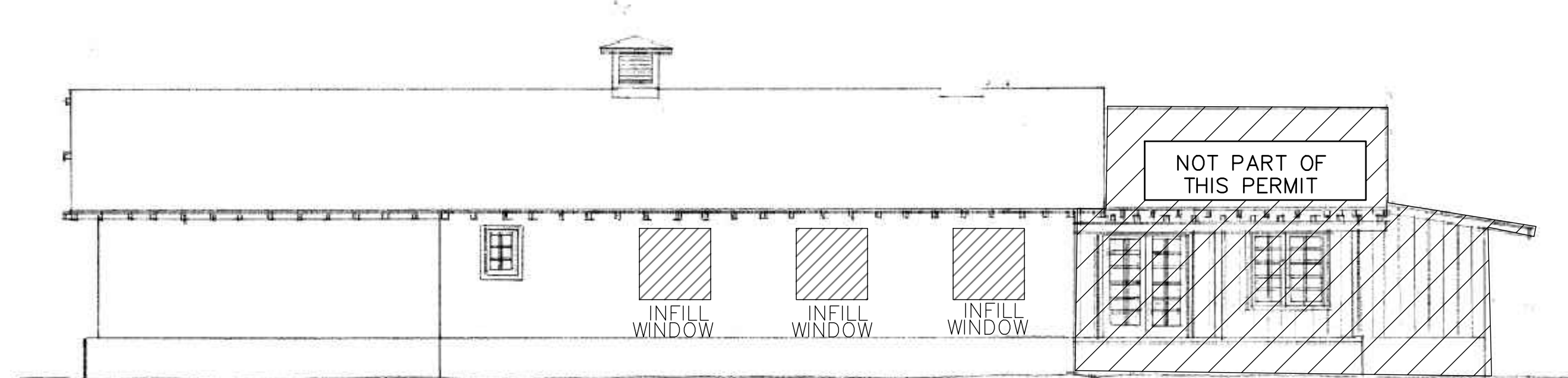


NOTES:

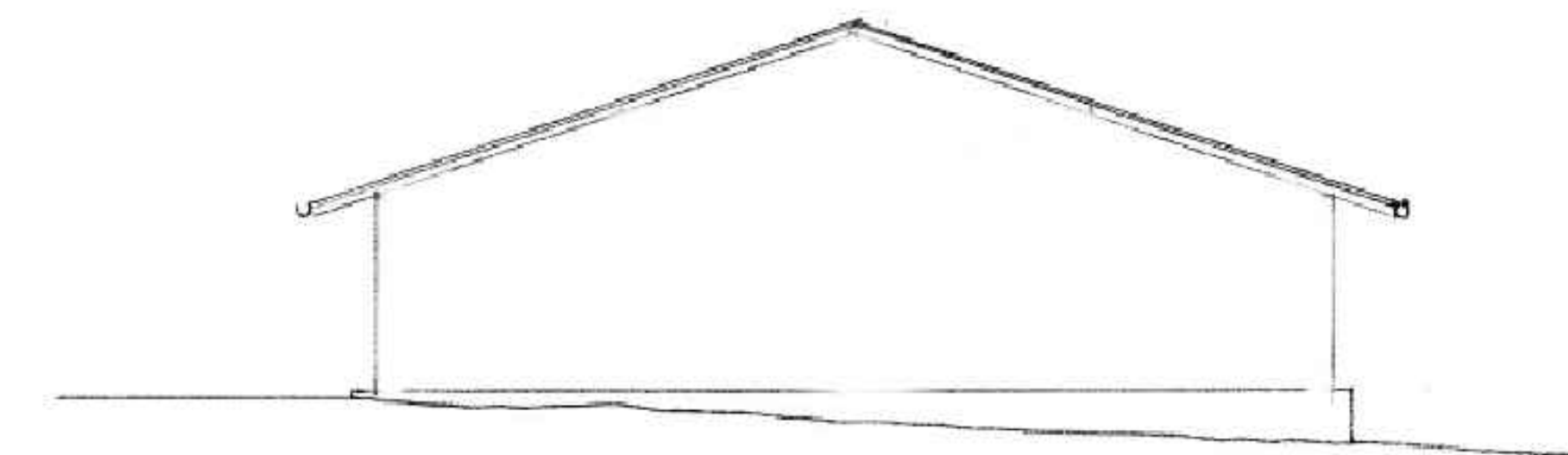
1 ROOF COVERING - FIRE RETARDANT / CLASS 'A' ROOFING
CORRUGATED WEATHERING STEEL
ERS# = 2048

UNDERLAYMENT:
ONE LAYER OF TYPE II (NO. 30) UNDERLAYMENT
AND TWO LAYERS OF GAF VERSASHIELD
FIRE-RESISTANT ROOF DECK PROTECTION

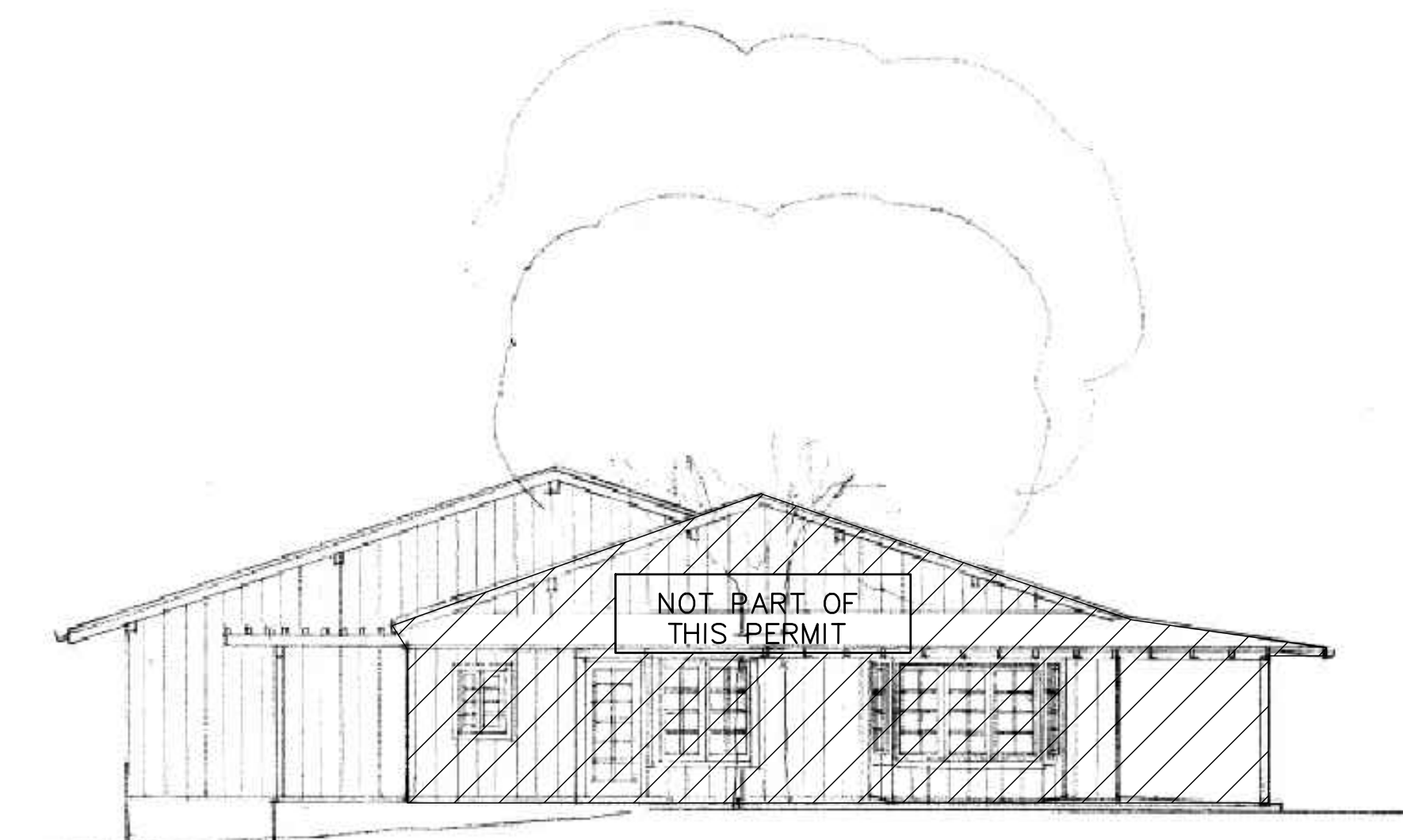
ROOF PLAN



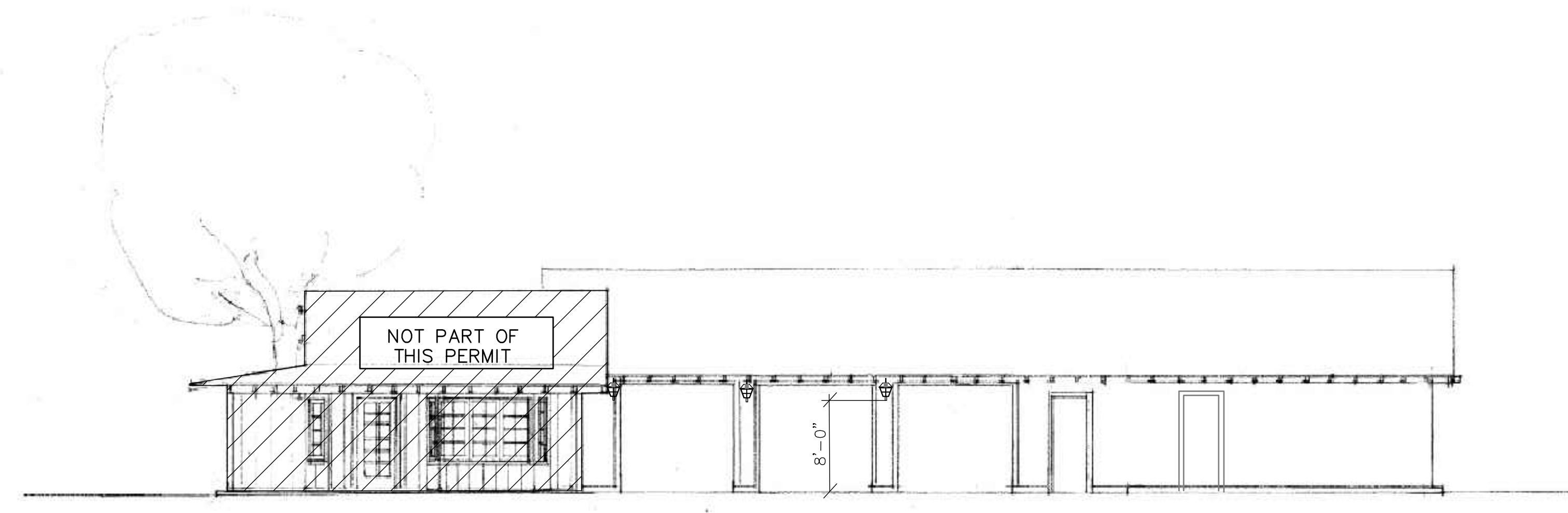
WEST ELEVATION



NORTH ELEVATION



SOUTH ELEVATION



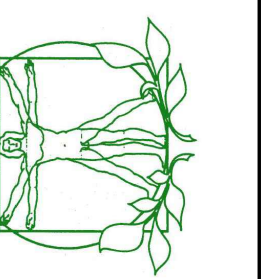
EAST ELEVATION

BUILT WITHOUT PERMIT

REVISIONS	#	DATE
	11-8-2021	11-25-2023
	0-13-2022	1-4-2024
	6-15-2023	
	8-10-2023	
	0-18-2023	



R.P.M. Architects
3568 Sagunto St. Ste. K
Santa Ynez, CA 93460
Phone 805 688 7281



ROOF PLAN
&
ELEVATIONS

SIERRA BOTANICALS
BARN
1999 HWY. 101
BUELLTON, CA. 93427

DATE: MAY 1, 2024

SCALE:

DRAWN:

SHEET

A4.1