

Laguna County Sanitation District

FY 2020 – 2021
Rates and Fees



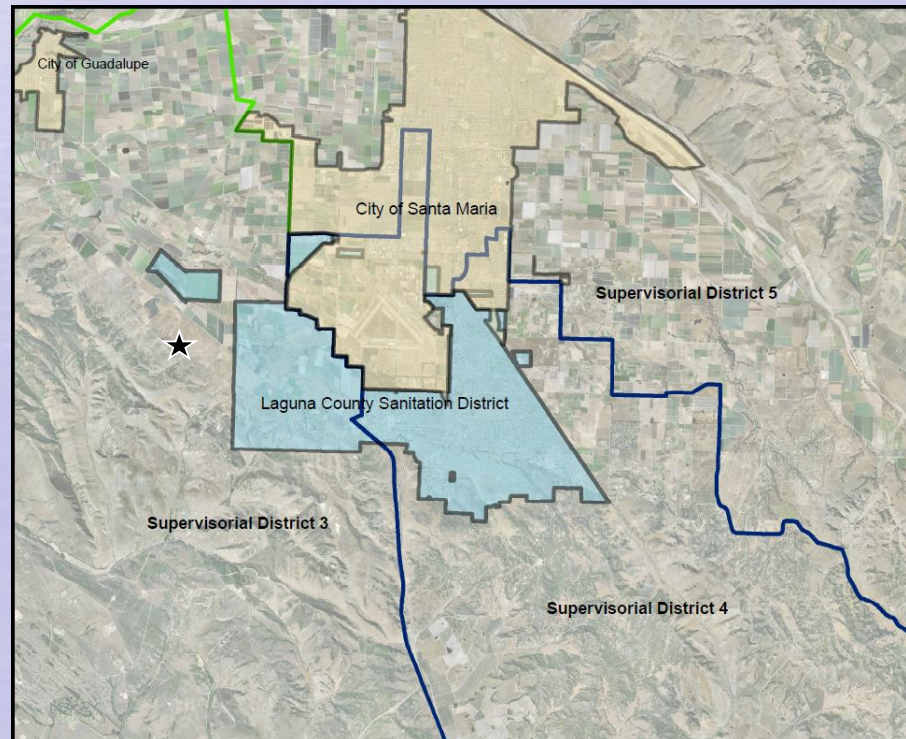
Laguna County Sanitation District



- Dependent special district created in 1958
- Provides wastewater services to Orcutt and unincorporated Santa Maria area
- Regulated by:
 - RWQCB Order R3-2011-0217 (plant)
 - EPA (brine disposal well)
 - SWRCB 2006-0003 (sewer system)
 - SWRCB – DDW (laboratory)
 - SWRCB (operator licensing)
 - SWRCB 2014-0057-DWQ (industrial)
 - APCD (air emissions)
- Conserves and protects resources

Annual Rates and Fees Ordinance

- Public noticing pursuant to Prop 218
 - Mailer to 12,463 customers on 10,691 parcels
- Hearing date published pursuant to Government Code in Santa Maria Times
- Open house May 23
- A small number of written responses (less than 1%)



Sewer Charge Rates

- Pay for annual operation, maintenance, replacement, and reserves
- Collected on the tax roll
- 2.36% increase proposed for FY 2020-2021
 - Per rate study. CPI was 3.1%
 - Prior increases for necessary plant upgrades were identified in the Master Plan presented to the Board on October 11, 2011

Master Plan



- Assessed condition of plant and looked at future needs
- Reviewed regulatory criteria
- Compared treatment and discharge alternatives
- Defined Phase 1 (replace existing) and Phase 2 (future capacity) conditions
- Evaluated costs and revenue needs

Proposed Sewer Charge

Residential unit equivalent (RUE) rate

Proposed annual rate	\$1,072.56
<u>Last year's rate</u>	<u>\$1,047.85</u>
Rate increase/year	\$ 24.71

Equivalent to \$2.06/month (monthly rate of \$89.38)

Multiple Family Residential = \$868.77/year
School = \$55.64 per cap/year
Commercial = Based on flow and load

How LCSD Compares Countywide

<u>Treatment Level</u>	<u>Agency</u>	<u>Monthly Rate</u>	<u>Inc.</u>
Tertiary	Summerland	\$131.44*	3.5%
	Lompoc	\$ 92.80	
	Laguna	\$ 89.38	2.36%
	Vandenberg Village	\$ 75.67	
Secondary	Montecito	\$137.66*	
	Santa Ynez	\$ 95.67*	3.75%
	CSA 12 Mission Canyon	\$ 83.30	4.43%
	Los Alamos	\$ 76.72*	3.0%
	Carpinteria	\$ 71.13*	4.0%
	Cuyama	\$ 66.00	
	Mission Hills	\$ 65.03	8.0%
	Santa Barbara	\$ 56.90	4.85%
	Guadalupe	\$ 52.35	2.3%
	Goleta West Sanitary	\$ 48.47*	
	Goleta Sanitary	\$ 45.25*	3.6%
	Solvang	\$ 35.84	
	Buellton	\$ 30.45	
	Santa Maria	\$ 25.72	5.0%
	Average	\$ 71.10	

* These rates include estimated property tax contributions.

Total Water Cost Comparison

<u>Agency</u>	<u>Water/Mo</u>	<u>Water and Sewer/Mo</u>
Montecito + Montecito Water	\$133.09	\$270.75
Summerland + Montecito Water	\$133.09	\$264.53
CSA 12 Mission Canyon + Santa Barbara	\$124.44	\$207.74
Carpinteria + Carpinteria Valley Water	\$119.48	\$190.61
Santa Ynez + Santa Ynez RWCD 1	\$ 93.48	\$189.15
Santa Barbara	\$124.44	\$181.34
Lompoc	\$ 79.36	\$172.16
Goleta West Sanitary + Goleta Water	\$120.26	\$168.73
Goleta Sanitary + Goleta Water	\$120.26	\$165.51
Cuyama	\$ 90.30	\$156.30
Solvang	\$109.93	\$145.77
Laguna + Golden State Water	\$ 51.06	\$140.44
Mission Hills	\$ 65.45	\$130.48
Los Alamos	\$ 40.04	\$123.40
Santa Maria	\$ 87.91	\$113.63
Vandenberg Village	\$ 35.34	\$111.01
Guadalupe	\$ 49.48	\$101.83
Buellton	\$ 65.31	\$ 95.76
Average		\$162.73

Developer Impact Fees



- Paid by development for sewer system equity buy-in
 - Trunk line fees fund collection system improvements
 - Connection fees fund treatment and disposal improvements

Developer Impact Fees

- Fees adjusted by indices pursuant to ordinances and agreements
- Connection charge per RUE \$8,429
Per rates and fee study
- Trunk Line Fees
 - Dutard trunk line (1.1%) per RUE \$1,076
 - Bradley trunk line (4.75%) per RUE \$2,814

Recommendations

- Adopt ordinance setting the rates and fees for FY 2020-2021

