



County of Santa Barbara Community Services Department
Housing and Community Development Division

State of California **Emergency Solutions Grant (ESG) Program**

Board of Supervisors
May 3, 2016

State ESG Program

- Re-designed for the 2016 operating year
- Shift from awarding funds to providers to Continuum of Care (CoC) Service Areas
- Two funding pools

CoC Allocation
\$12,827,536

Balance of State Allocation
\$9,077,030

- Santa Maria/Santa Barbara County CoC qualifies under the CoC Allocation

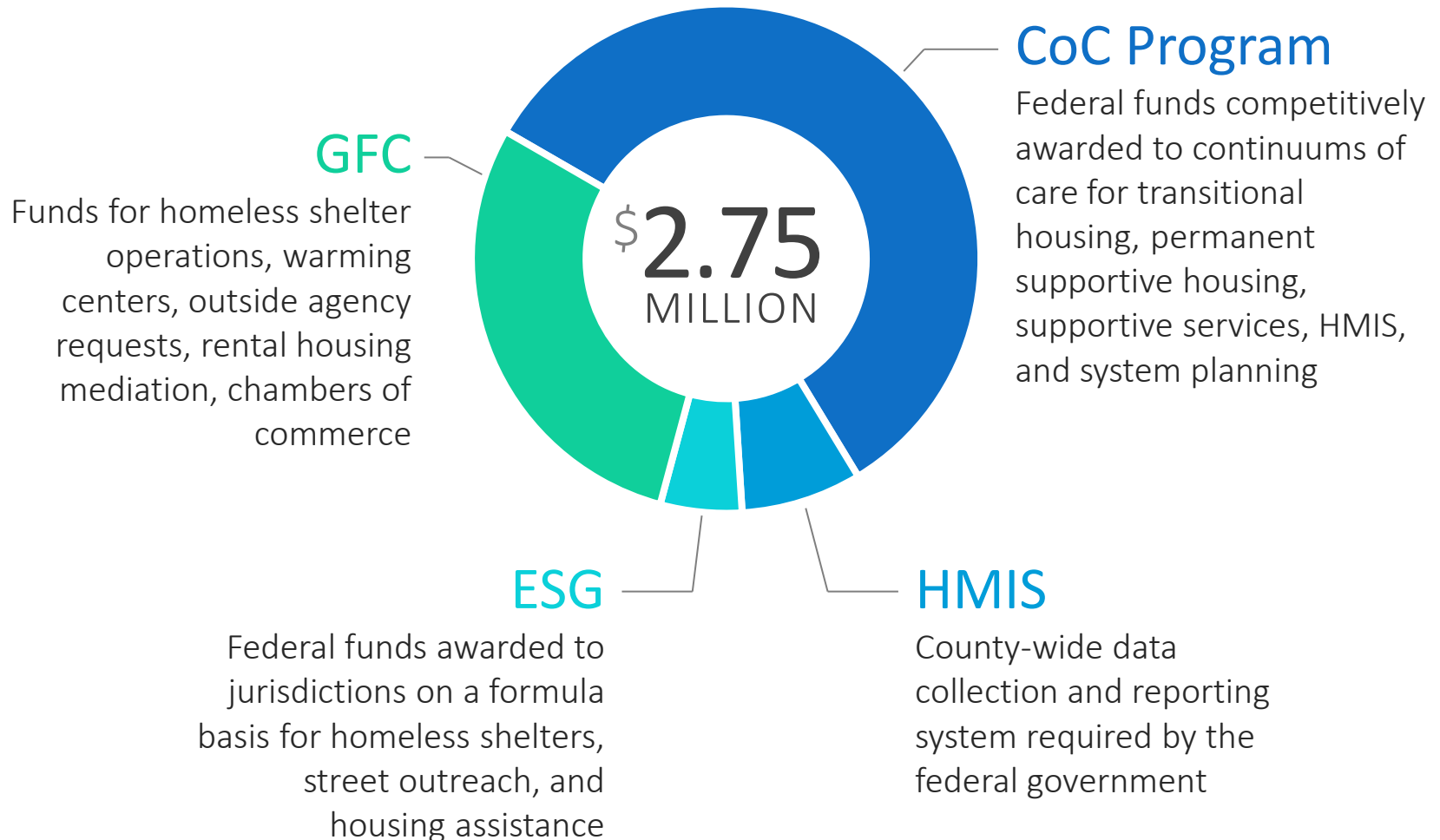
Administrative Entity (AE)

- Unit of general purpose local government approved by State HCD to administer funds under CoC Allocation
- Contracts with State HCD to administer funds in collaboration with the CoC for its service area

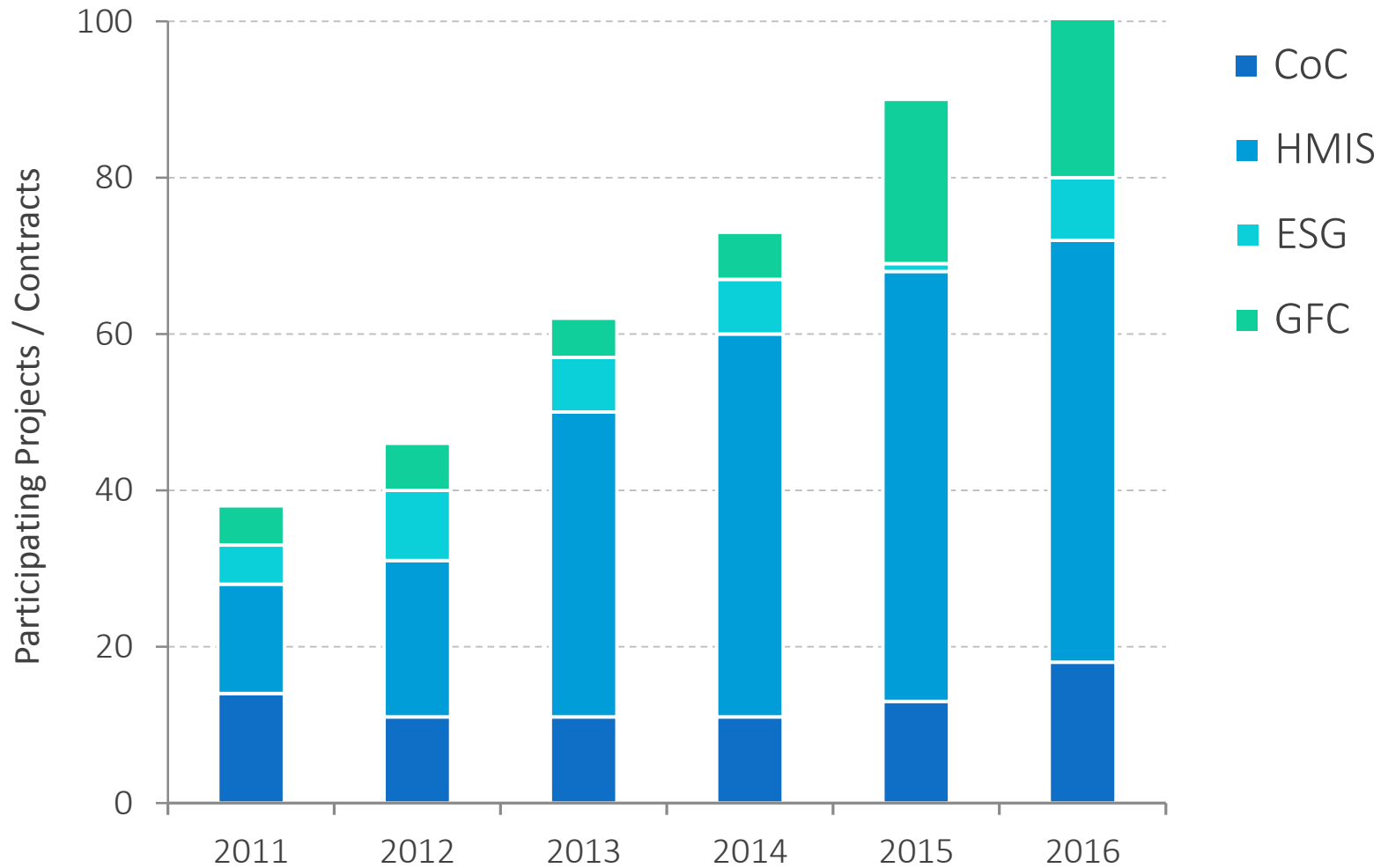
Santa Maria/Santa Barbara County CoC

Allocation	\$660,962
Administrative Allowance	\$17,845
Approved AE	County of Santa Barbara

CSD & Homeless / Community Support



CSD & Homeless / Community Support



Option 1: Accept AE Designation

Funds Available	\$660,962
Maximum Number of Funded Providers	AE Discretion
Administrator	County
Administrative Allowance	\$17,845
Eligible Activities	Emergency Shelter Street Outreach Rapid Re-housing HMIS

- County required to collaborate with the local CoC
- Staff proposes to engage the CoC Review and Rank Committee to make funding recommendations to the Board of Supervisors

Option 1: Sub-Options

A Serve as AE with Additional Staffing

- 1.0 FTE at annual cost of \$110,000; included in CSD Budget Enhancement Requests
- Implement State ESG Program and assist with administration of existing homeless / community support programs

B Serve as AE with No Additional Staffing

- Limit eligible activities to emergency shelter and rapid re-housing
- Enter into agreements with no more than 2 providers

C Other Direction

Option 2: Reject AE Designation

Funds Available	\$264,385 - \$330,481
Maximum Number of Funded Providers	1
Administrator	State HCD
Administrative Allowance	Not Applicable
Eligible Activities	Rapid Re-housing

- Balance of funds intended for Santa Barbara County to be redistributed statewide
- Local CoC to recommend one provider to carry out rapid re-housing activities to State HCD

Impacts

Eligible Activity	2014 Amount	Accept AE 2016 Amount	Reject AE 2016 Amount
Emergency Shelter	\$289,000		
Street Outreach	\$0	Max. \$378,732	
HMIS	\$48,668		
Rapid Re-housing	\$226,243	Min. \$264,385	\$264,385 - \$330,481
Homelessness Prevention	\$64,875		
Administration	\$9,269	\$17,845	
Total	\$638,055	\$660,962	\$264,385 - \$330,481

Benchmark Counties

County	Funding Pool	Allocation	Administrator
Sonoma	CoC	\$478,650	County of Sonoma
Tulare*	Balance of State	\$731,398	State HCD
Santa Barbara	CoC	\$660,962	
Monterey*	CoC	\$588,322	City of Salinas
Solano	Balance of State	\$483,956	State HCD
Placer*	Balance of State	\$368,000	State HCD
San Luis Obispo	CoC	\$224,092	County of San Luis Obispo
Santa Cruz	Balance of State	\$612,546	State HCD
Marin	Balance of State	\$413,784	State HCD

*Part of multi-county CoC; allocation covers two or more counties

Recommended Actions

- A. Receive and file a report on State ESG Program re-design;
- B. Provide direction to staff on options for the County:
 - i. Accept AE designation, or
 - ii. Reject AE designation;
- C. If accepting AE designation, authorize CSD to engage the CoC Review and Rank Committee; and
- D. If accepting AE designation, direct staff as follows:
 - i. Return during FY 2016-17 Budget Hearings with recommended funding for 1.0 FTE,
 - ii. Limit eligible activities and number of funded providers, or
 - iii. Provide other direction.