

RICHARDS RANCH, LLC
MIXED USE DEVELOPMENT PROJECT
CITY OF SANTA MARIA, CA

BIOLOGICAL RESOURCES ASSESSMENT
WATERS OF THE U.S./STATE JURISDICTIONAL DETERMINATION
CALIFORNIA TIGER SALAMANDER SITE ASSESSMENT

JULY 8, 2022

Prepared for:

RICHARDS RANCH, LLC

PREPARED BY:

David Wolff Environmental, LLC

APPENDIX A

FIGURES

FIGURE 1: REGIONAL LOCATION MAP

FIGURE 2: VICINITY LOCATION AERIAL MAP

FIGURE 3: PROJECT SCHEMATIC MAP

FIGURE 4: SOILS MAP

FIGURE 5: HABITAT MAP

FIGURE 6: JURISDICTIONAL DETERMINATION MAP

FIGURE 7: CNDDDB OCCURRENCE MAP

FIGURE 8: REPRESENTATIVE PHOTOGRAPHS

FIGURE 9: AERIAL PHOTOGRAPHS OVER TIME

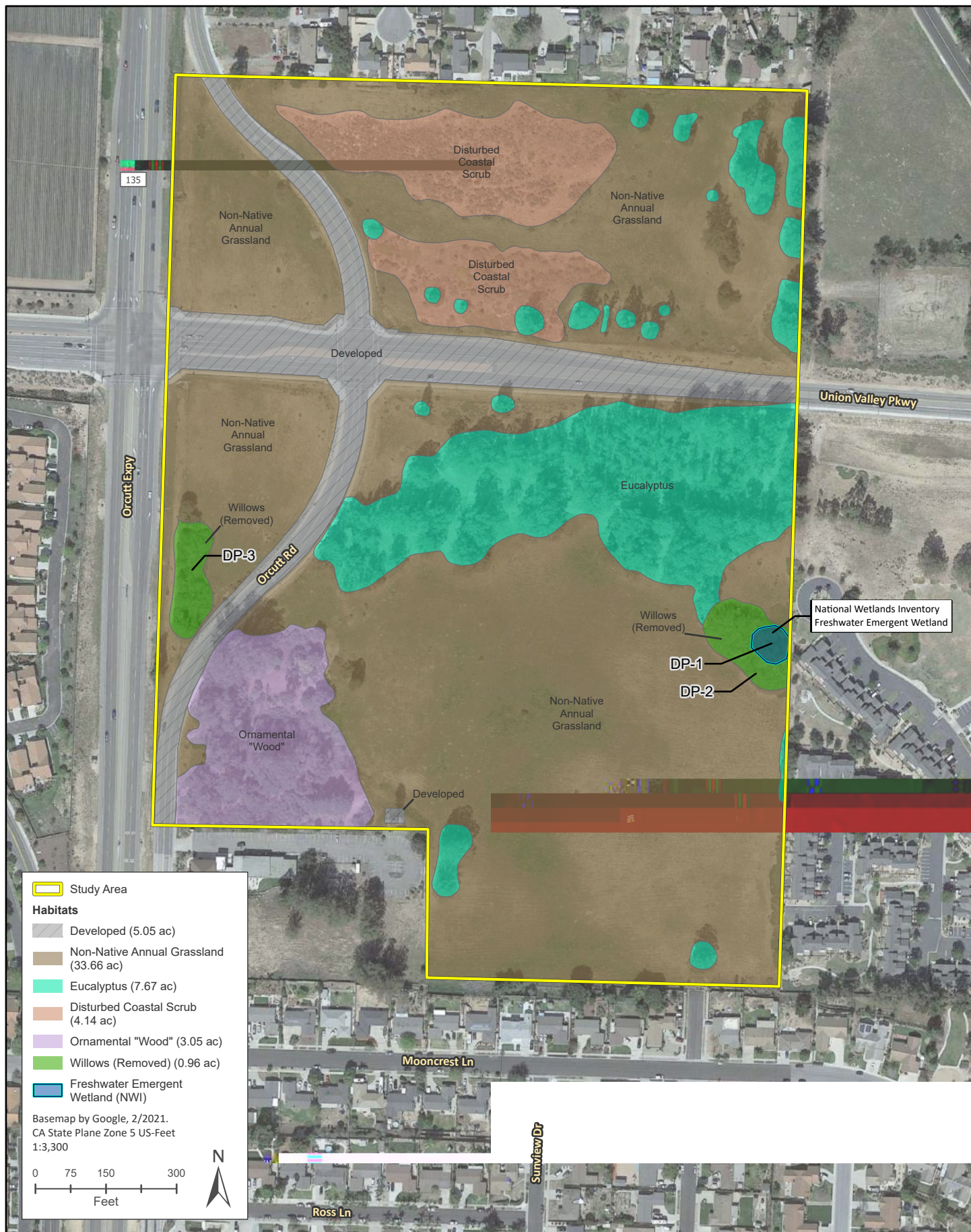


FIGURE 3 – PROJECT DETAIL SCHEMATIC



FIGURE 4 – SOILS MAP





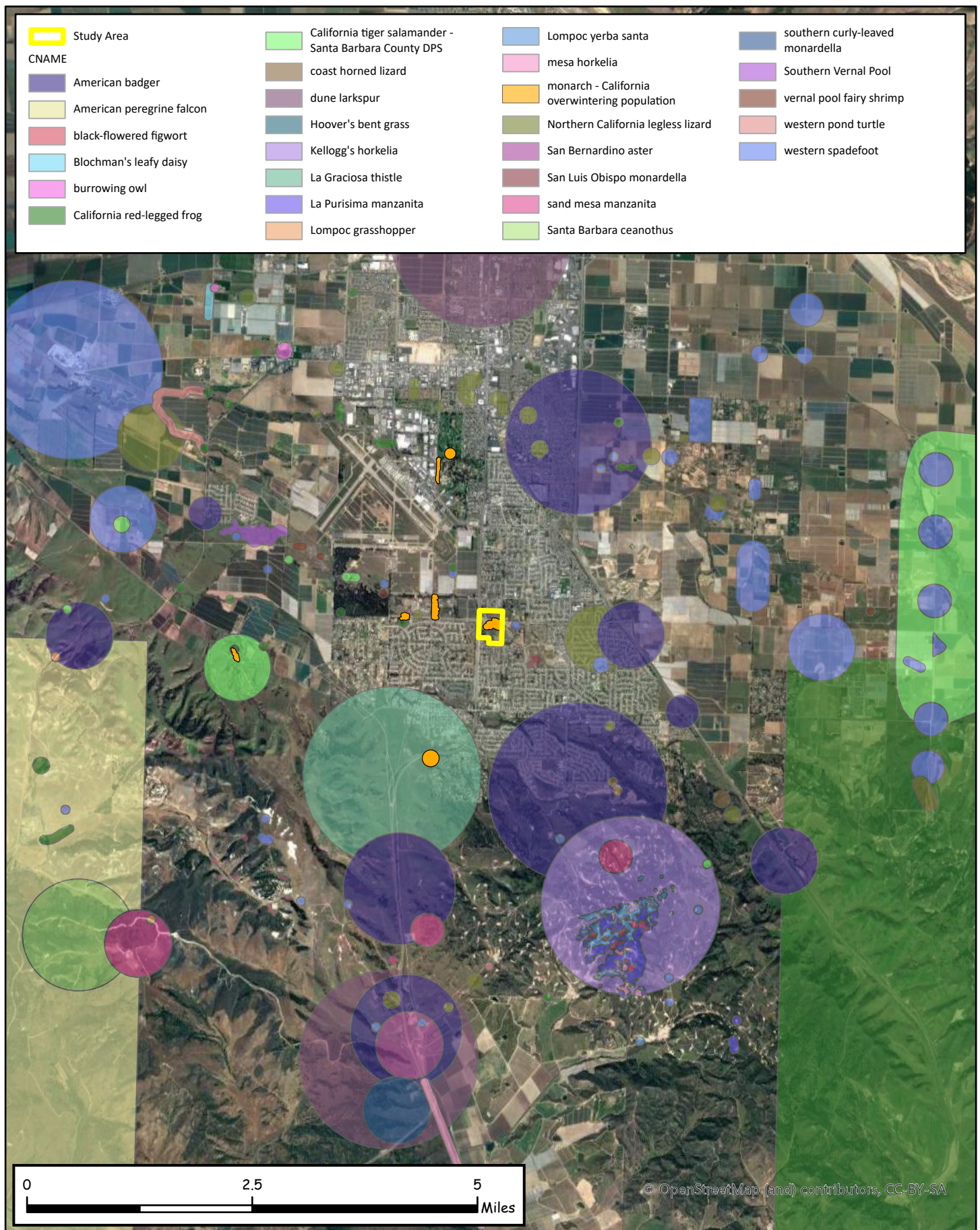




Photo 1: View west at project site north of UVP at non-native annual grassland, eucalyptus, and disturbed coastal scrub (arrow). 12/17/2021



Photo 2: View west at disturbed coastal scrub on project site north of UVP. Fire suppression discing furrows evident. 12/17/2021



Photo 3: View east at disturbed coastal scrub, disced grassland, and eucalyptus row along east border of site north of UVP. 12/17/2021



Photo 4: View west north side of UVP showing discing furrows in disturbed grassland and disturbed coastal scrub. 3/7/2022

FIGURE 8 – REPRESENTATIVE PHOTOGRAPHS



Photo 5: View east at eucalyptus stands and grassland, and ice plant along both sides of UVP. 12/17/2021



Photo 6: View north from south side of UVP at eastern project boundary development, eucalyptus, & willow removal area (arrow). 12/17/2021



Photo 7: View south at eastern project boundary showing adjacent development & willow removal area (arrow). 3/7/2022



Photo 8: View west at willow removal area lacking any drainage pattern, grassland, and eucalyptus along on south side of UVP. 12/17/2021

FIGURE 8 – REPRESENTATIVE PHOTOGRAPHS



Photo 9: View west at project area south of UVP at grassland disc furrows, eucalyptus, and non-native ornamental “wood” (arrow). 3/7/2022



Photo 10: View west at ornamental and native tree “wood” on the south side of UVP. 12/17/2021



Photo 11: View south on north side of UVP showing disced grassland and rows of eucalyptus trees on both sides of UVP. 3/7/2022



Photo 12: View north at non-native grassland and small patch of single and multi-trunk coast live oaks on north side of UVP. 3/7/2022

FIGURE 8 – REPRESENTATIVE PHOTOGRAPHS



Photo13: View west at wetland determination data point DP-1 (arrow) in center of willow removal area. No basin or drainage pattern. 3/7/2022



Photo 14: View east at wetland determination data point DP-1 (arrow) in center of willow removal area. No basin or drainage pattern. 3/7/2022



Photo 15: View north at wetland determination data point DP-2 (arrow) near edge of willow removal area. No basin or drainage pattern. 3/7/2022



Photo 16: View south at wetland determination data point DP-2 (arrow) near edge of willow removal area. No basin or drainage pattern. 3/7/2022

FIGURE 8 – REPRESENTATIVE PHOTOGRAPHS



Photo 17: View north at wetland determination data point DP-3 (arrow) in center of willow removal area. Buried culvert yellow arrow. 3/7/2022



Photo 18: View east at wetland determination data point DP-3 (arrow) in center of willow removal area. Road drainage concrete culvert. 3/7/2022



Photo 19: View south at constructed rocky ditch drainage to culvert under Orcutt Road to DP-3 area. 3/7/2022



Photo 20. View north rocky roadside drainage ditch & stormdrain inlet along Orcutt Road towards intersection and culvert under UVP. 3/7/2022

FIGURE 8 – REPRESENTATIVE PHOTOGRAPHS



Photo 21: View north at stormdrain inlet and constructed ditch drainage management system on UVP at Orcutt Road. 12/17/2021



Photo 22: View south at constructed rocky ditch roadside drainage management system on Orcutt Road at UVP. 12/17/2021



Photo 23: View south at constructed ditch drainage management system and culvert under Orcutt Road. 12/17/2021



Photo 24: View west at drainage rock at culvert under Orcutt Road. No continued drainage pattern. 12/17/2021

FIGURE 8 – REPRESENTATIVE PHOTOGRAPHS



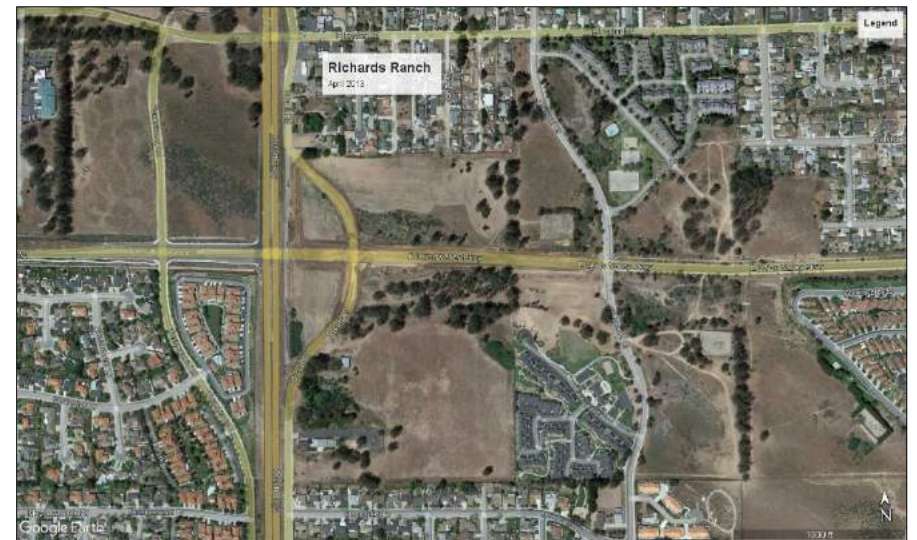
AERIAL VIEW SEPTEMBER 1994 – Showing stands of trees, coastal scrub, and grassland habitats. Some site disturbance evident.



AERIAL VIEW JUNE 2002 - Showing stands of trees, coastal scrub, and grassland habitats. Some site disturbance evident.

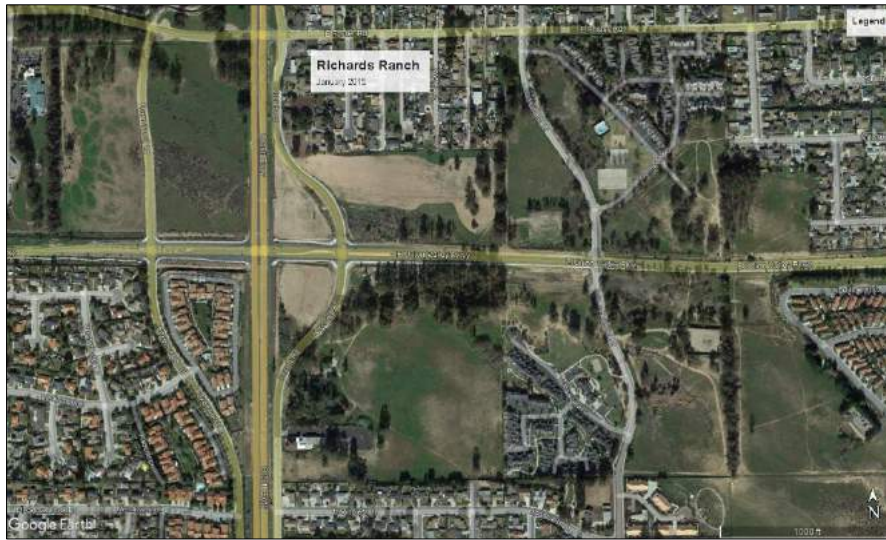


AERIAL VIEW JUNE 2012 – Showing stands of trees, coastal scrub, and grassland habitats. Substantial site disturbance and Union Valley Parkway construction evident.

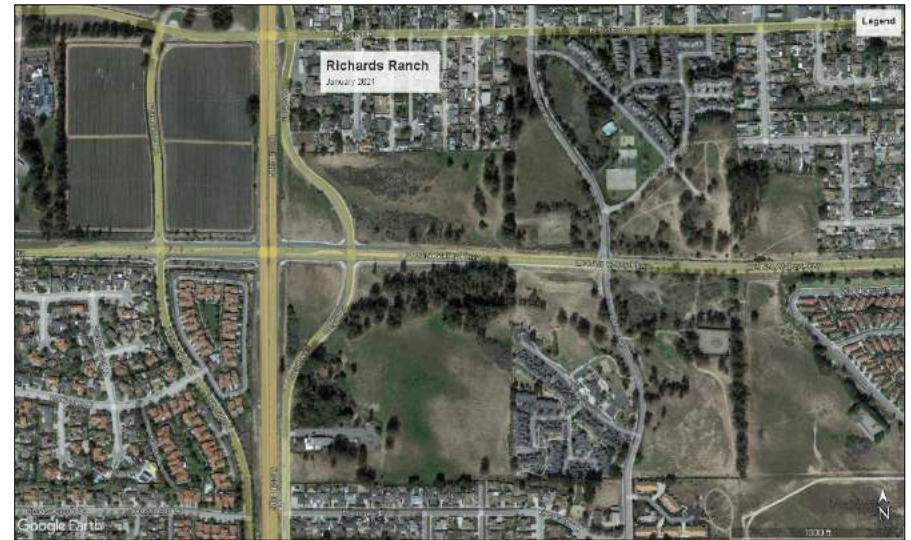


AERIAL VIEW APRIL 2013 - Showing stands of trees, coastal scrub, and grassland habitats. Substantial site disturbance and Union Valley Parkway construction evident.

FIGURE 9 – AERIAL VIEW OVER TIME



AERIAL VIEW JANUARY 2015 - Showing stands of trees, coastal scrub, and grassland habitats. Substantial site disturbance and Union Valley Parkway completion evident.



AERIAL VIEW JANUARY 2021 - Showing stands of trees, coastal scrub, and grassland habitats. Regrowth of coastal scrub habitat in northern portion of the site evident.

FIGURE 9 – AERIAL VIEW OVER TIME