

**PARK HILL ESTATES V.2
RESIDENTIAL SUBDIVISION**

10TRM-00000-00001

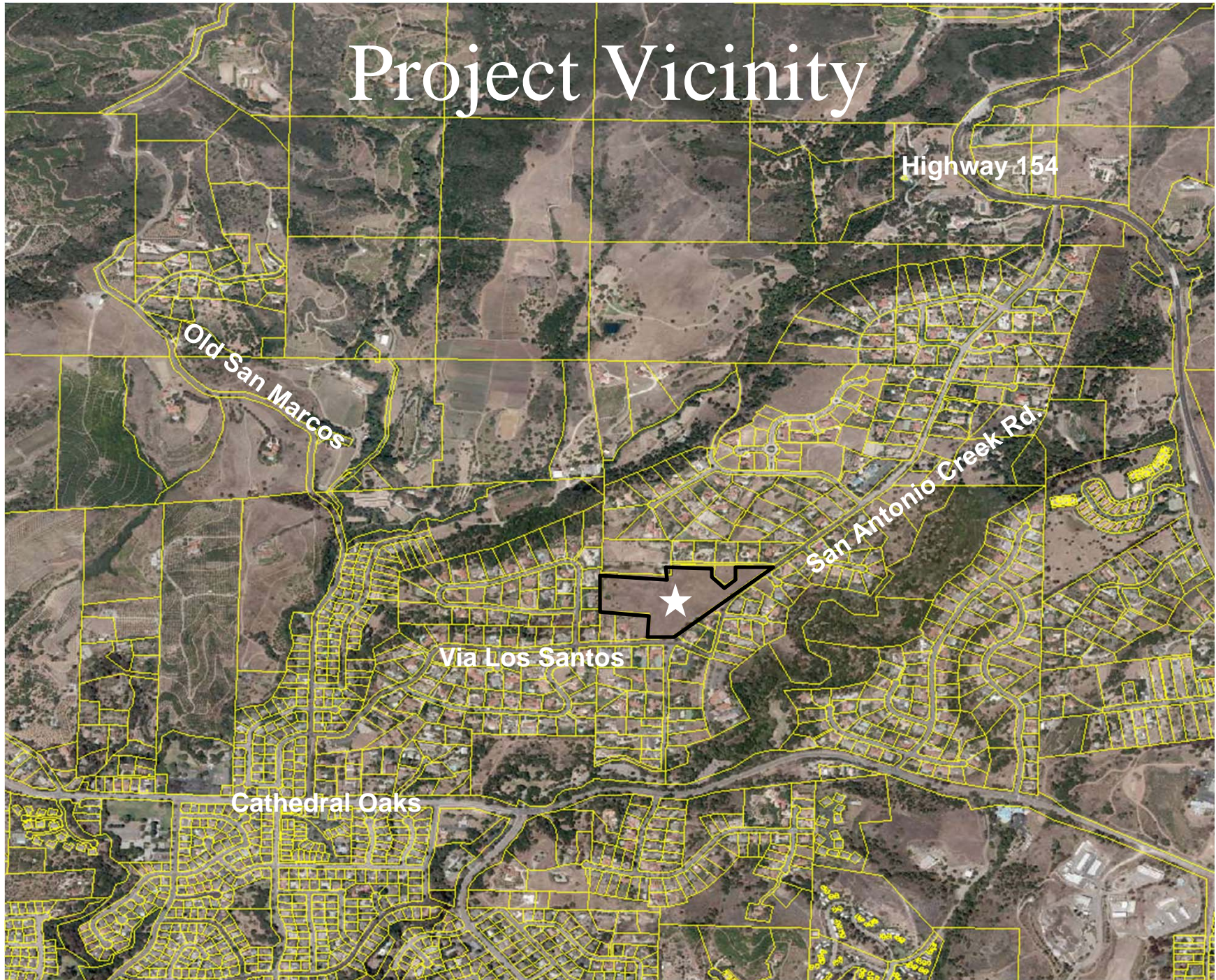
**SANTA BARBARA COUNTY
BOARD OF SUPERVISORS**

May 22, 2012

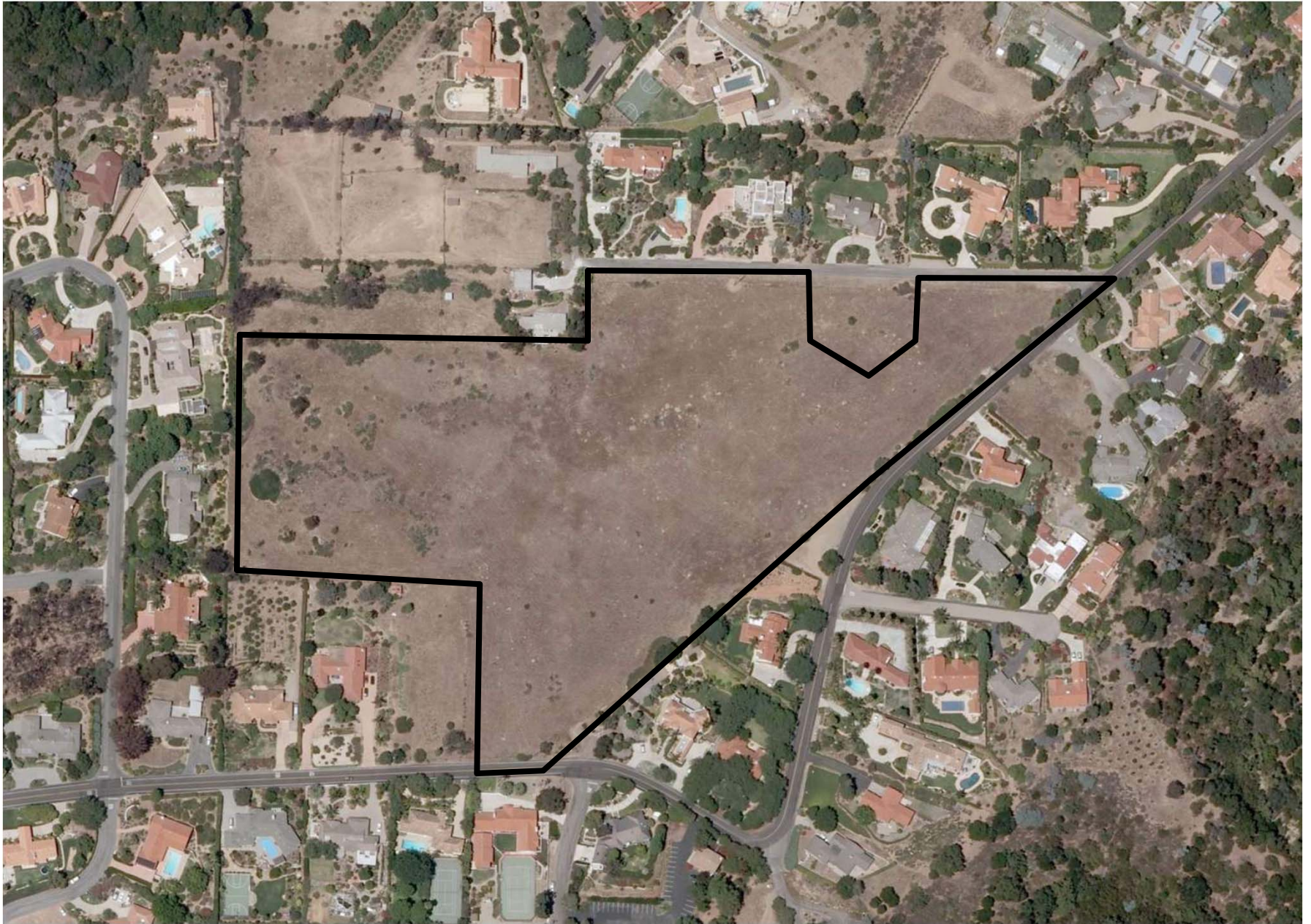
Purpose of Hearing

- Chapter 21-6(a) confirms that the Planning Commission is the decision maker on Tract Maps
- Decision before your Board is the limited issue of whether focused EIR is required

Project Vicinity



PROJECT SITE



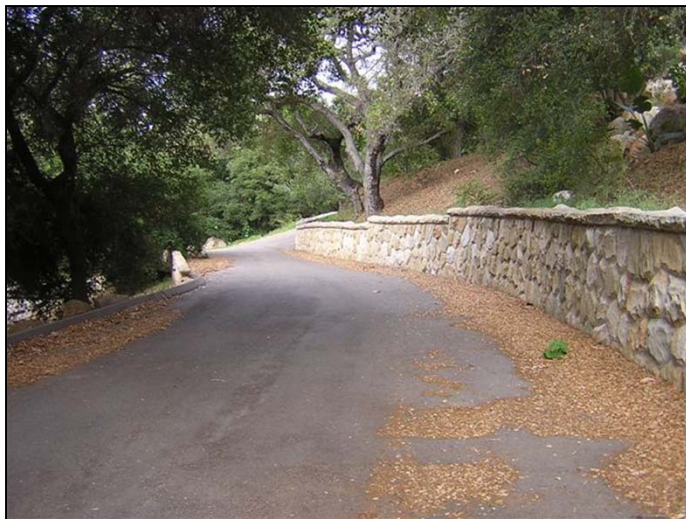
CONCEPTUAL SITE PLAN



Vicinity Projects

- B'nai B'rith Congregation CUP Revision – 1999
- La Romana Subdivision – 1997
- Fee Residence – 2004-2007
- Handerhan/Ranch Danza del Sol – 2005
- Community of Christ Church CUP Revision - 2002

San Antonio Creek Road



Emergency Access Improvements

- Asphalt concrete overlay for 300 linear ft.
- Micro seal resurfacing for 450 linear ft.
- Drainage facilities and asphalt concrete berm to control drainage
- Vegetation and tree trimming
- Small retaining wall on uphill slope for approximately 150 linear ft. to widen roadway to 16-18 ft.
- Refresh roadway delineation and reflective markers



Emergency Access Improvements

