

# ATTACHMENT A

**BOARD OF SUPERVISORS OF THE  
COUNTY OF SANTA BARBARA, STATE OF CALIFORNIA**

**RESOLUTION NO. \_\_\_\_\_**

In the Matter of the Board of Supervisors Accepting Offers to Dedicate Public Open Space and Access Easements at the Rice Ranch Subdivision, Tract Map 14,636
---

**RESOLUTION RESCINDING  
COUNTY OF SANTA BARBARA'S  
2005 REJECTIONS OF OFFERS OF  
DEDICATION AND NOW ACCEPTING  
THOSE OFFERS TO DEDICATE  
PUBLIC OPEN SPACE AND  
ACCESS EASEMENTS**

**WHEREAS**, the provisions of the Orcutt Community Plan (hereinafter the "OCP") and Final Tract Map No. 14,636 require the Owner(s) of Rice Ranch subdivision to grant irrevocable offers to dedicate: 1) public open space ownership, in fee; and 2) easements for public access, on portions of the Owner(s) real property; and

**WHEREAS**, the irrevocable offers to dedicate were initially rejected on September 27, 2005 as part of the Board of Supervisor's approval of the Rice Ranch large lot conveyance map, Final Tract Map No. 14,636, with a reservation of the right to accept the offers of dedication and easements at a future date; and

**WHEREAS**, the County of Santa Barbara now wishes to: 1) rescind the 2005 rejections; and 2) accept the public open space, and access easements, on those certain portions of real property in the unincorporated territory of Santa Barbara County, in connection with the OCP and the provisions of the Rice Ranch Specific Plan and Final Tract Map; and

**WHEREAS**, it is in the County of Santa Barbara's interest to accept these open space parcels and public access easements, to assure the orderly development of the Rice Ranch subdivision and to directly benefit the residents of the Rice Ranch subdivision by assuring access to the existing Community Park and a trail network onsite, which will run with the land and will be binding on the grantor(s), their heirs, successors, and assigns; and

**WHEREAS**, pursuant to Government Code Section 65402 of the State of California it is determined that the offers of dedication are consistent with the Comprehensive Plan, specifically the OCP; and

**WHEREAS**, Government Code Sections 7050 and 66477.2 of the State of California provides that offers of dedication may be timely accepted by the Board of Supervisors.

**NOW, THEREFORE**, the Board of Supervisors of the County of Santa Barbara, State of California does hereby find, determine and order as follows with regard to those parcels and easements described by documents listed in Exhibit "A" through "C" attached hereto and incorporated herein by reference:

1. That the above recitals are true and correct.

2. That each of these open space parcels, and public access easements, are located within the boundaries of the OCP and that their acceptance is consistent with the County's Comprehensive Plan, which specifically provides for public ownership of open space, and public trail access to specified areas within the Rice Ranch property.

3. That County of Santa Barbara's acceptance now of these previously-rejected offers of dedication directly benefits the residents of the Rice Ranch subdivision and is necessary for the orderly development of the Rice Ranch subdivision.

4. That on behalf of the People of the State of California and Santa Barbara County, the Board of Supervisors for the County of Santa Barbara, State of California hereby rescinds County of Santa Barbara's 2005 rejections of these offers of dedication and now accepts the real property interests as described in the irrevocable offers to dedicate public open space, and access easements, as recorded in the official records of the Clerk Recorder of the County of Santa Barbara, and more specifically described in the following recorded documents listed on Exhibit "A."

5. That the Clerk of the Board of Supervisors hereby is authorized and directed to record this resolution in the office of the County Recorder of the County of Santa Barbara.

/

/

/

/

/

/

/

/

/

Passed and adopted by the Board of Supervisors of the County of Santa Barbara, State of California, this \_\_\_\_ day of \_\_\_\_\_, 2011, by the following vote:

**AYES:**

**NOES:**

**ABSENT:**

**ABSTAINED:**

County of Santa Barbara

ATTEST:  
CHANDRA L. WALLAR  
CLERK OF THE BOARD

By: \_\_\_\_\_  
JONI GRAY  
Chair, Board of Supervisors

By: \_\_\_\_\_  
Deputy

APPROVED AS TO FORM:  
DENNIS MARSHALL  
COUNTY COUNSEL

APPROVED AS TO FORM  
ROBERT W. GEIS, CPA  
AUDITOR-CONTROLLER

By: Mill C. Heyzi

By: Robert W. Geis

EXHIBIT "A"

PUBLIC OPEN SPACE DEDICATION

	<u>Assessor Parcel No.</u>	<u>Recorded Date</u>	<u>Document No.</u>
1.	101-380-001	September 29, 2005	Map Book 200, Pages 93-99
2.	101-390-001	September 29, 2005	Map Book 200, Pages 93-99
3.	101-400-003	September 29, 2005	Map Book 200, Pages 93-99
4.	101-380-003	September 29, 2005	Map Book 200, Pages 93-99

PUBLIC ACCESS EASEMENTS

	<u>Assessor Parcel No.</u>	<u>Recorded Date</u>	<u>Document No.</u>
1.	101-380-002	September 29, 2005	Map Book 200, Pages 93-99
2.	101-380-004	September 29, 2005	Map Book 200, Pages 93-99
3.	101-400-001	September 29, 2005	Map Book 200, Pages 93-99
4.	101-400-002	September 29, 2005	Map Book 200, Pages 93-99

EXHIBIT "B"  
ASSESSOR'S PAGES  
B.1. 101-380  
B.2. 101-390  
B.3. 101-400

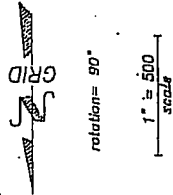
101-378

POR. T9N R34W SBB&M

LINE	BEARING	DISTANCE
L1	S81°13'17"	281.5
L2	S77°11'17"	15.5
L3	N83°10'17"	24.30
L4	N82°54'17"	31.83
L5	S76°54'17"	11.77
L6	S65°18'17"	14.39
L7	S51°55'17"	77.4
L8	S27°52'17"	77.4
L9	S27°52'17"	77.4
L10	S27°52'17"	77.4
L11	S27°52'17"	77.4
L12	S27°52'17"	77.4
L13	S27°52'17"	77.4
L14	S27°52'17"	77.4
L15	S27°52'17"	77.4
L16	S27°52'17"	77.4
L17	S27°52'17"	77.4
L18	S27°52'17"	77.4
L19	S27°52'17"	77.4
L20	S27°52'17"	77.4
L21	S27°52'17"	77.4
L22	S27°52'17"	77.4
L23	S27°52'17"	77.4
L24	S27°52'17"	77.4
L25	S27°52'17"	77.4
L26	S27°52'17"	77.4
L27	S27°52'17"	77.4
L28	S27°52'17"	77.4
L29	S27°52'17"	77.4
L30	S27°52'17"	77.4
L31	S27°52'17"	77.4
L32	S27°52'17"	77.4
L33	S27°52'17"	77.4
L34	S27°52'17"	77.4
L35	S27°52'17"	77.4
L36	S27°52'17"	77.4
L37	S27°52'17"	77.4
L38	S27°52'17"	77.4
L39	S27°52'17"	77.4
L40	S27°52'17"	77.4
L41	S27°52'17"	77.4
L42	S27°52'17"	77.4
L43	S27°52'17"	77.4
L44	S27°52'17"	77.4
L45	S27°52'17"	77.4
L46	S27°52'17"	77.4
L47	S27°52'17"	77.4
L48	S27°52'17"	77.4
L49	S27°52'17"	77.4
L50	S27°52'17"	77.4
L51	S27°52'17"	77.4
L52	S27°52'17"	77.4
L53	S27°52'17"	77.4
L54	S27°52'17"	77.4
L55	S27°52'17"	77.4
L56	S27°52'17"	77.4
L57	S27°52'17"	77.4
L58	S27°52'17"	77.4
L59	S27°52'17"	77.4
L60	S27°52'17"	77.4
L61	S27°52'17"	77.4
L62	S27°52'17"	77.4

Note: All bearings and distances shown are drawn and annotated in CA Zone V NAD83 State Plane coordinates.

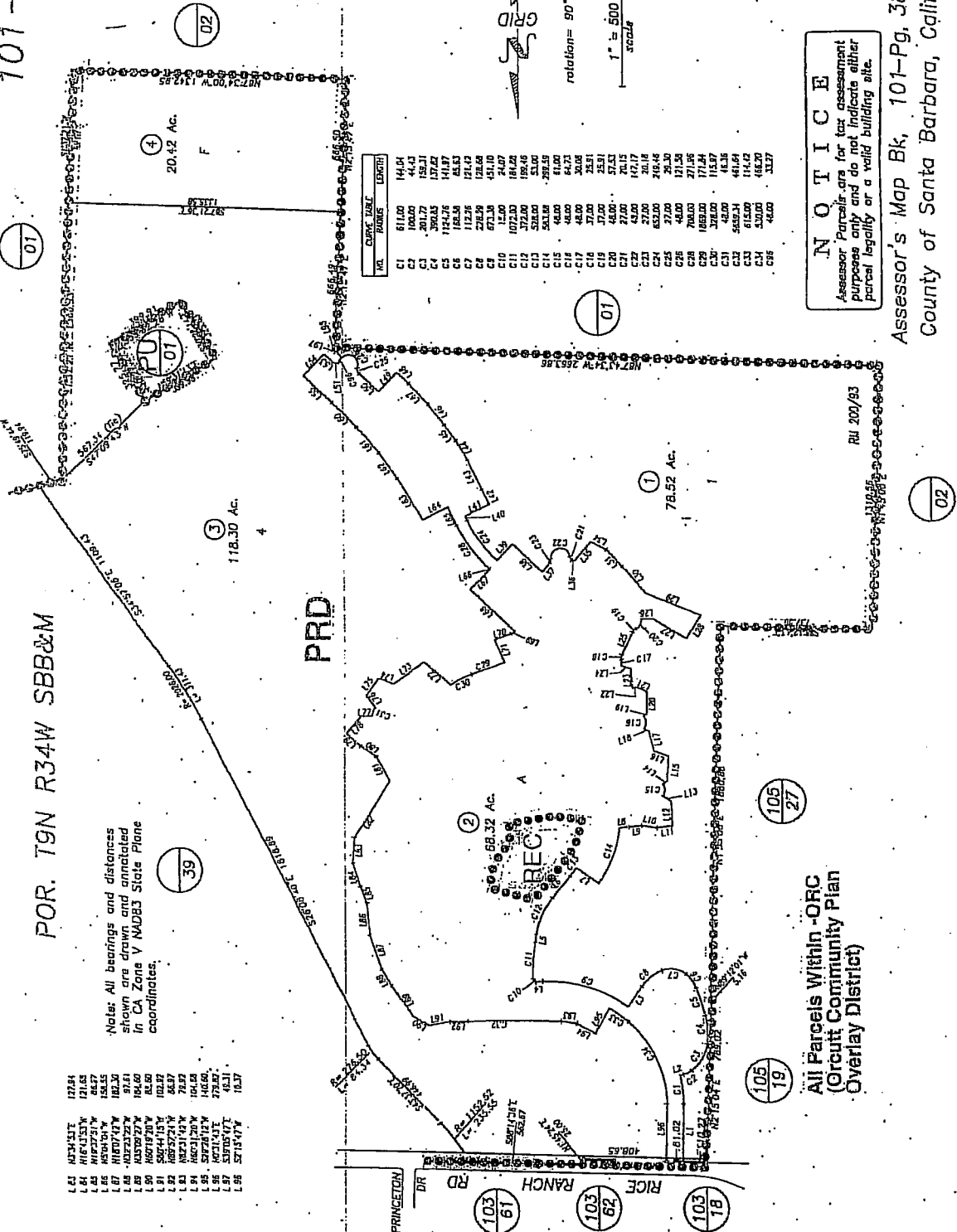
NO.	CURVE	BEARING	LENGTH
C1	61.00	14.01	
C2	10.00	44.1	
C3	20.77	152.31	
C4	39.03	172.2	
C5	114.78	141.87	
C6	182.3	83.53	
C7	112.38	72.42	
C8	43.10	43.10	
C9	43.10	43.10	
C10	15.00	43.07	
C11	107.00	184.02	
C12	37.00	159.46	
C13	32.00	53.06	
C14	34.00	41.38	
C15	46.00	41.38	
C16	46.00	64.23	
C17	46.00	30.00	
C18	37.00	25.31	
C19	7.00	7.00	
C20	45.00	37.13	
C21	45.00	45.00	
C22	45.00	42.17	
C23	27.00	20.18	
C24	63.00	218.48	
C25	37.00	29.30	
C26	46.00	121.58	
C27	70.00	71.54	
C28	37.00	115.97	
C29	37.00	115.97	
C30	46.00	46.00	
C31	61.00	44.61	
C32	61.00	114.62	
C33	46.00	46.00	
C34	46.00	32.27	



**NOTICE**  
Assessor Parcels are for tax assessment purposes only and do not indicate either parcel legality or a valid building site.

Assessor's Map Bk, 101-Pg, 38  
County of Santa Barbara, Calif.

10/06 New page from 105-140-016-2 per. of 010-019



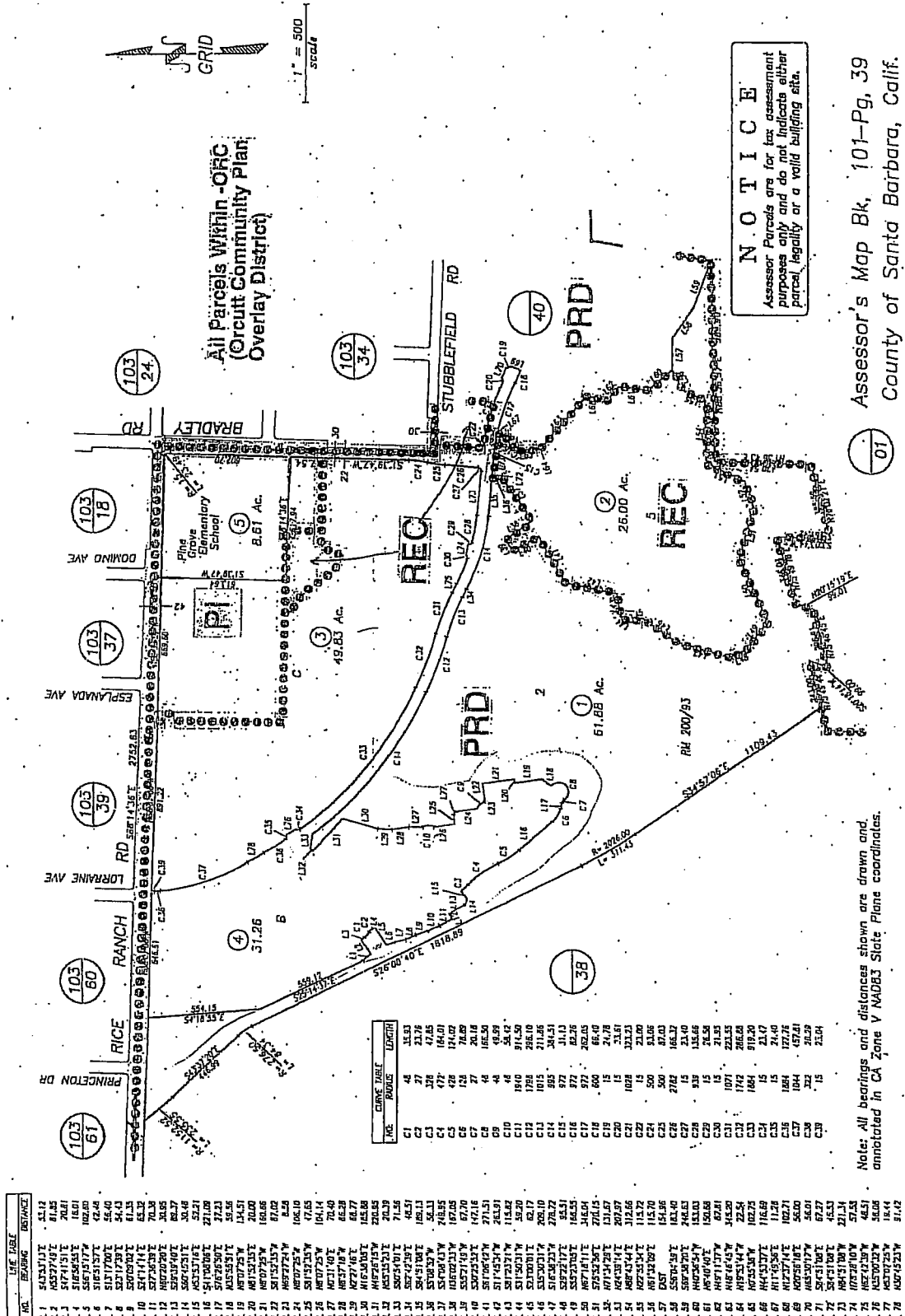
All Parcels Within -ORC (Orcutt Community Plan Overlay District)

09/29/2005 R.M. Bk. 200, Pg. 93-99, Tract 14636

101-38

101-39

POR. T9N R34W SBB&M



LINE	BEARING	DISTANCE
L1	S43°31'17"	53.13
L2	A85°27'48"	61.85
L3	S47°14'51"E	70.81
L4	S18°56'53"E	16.01
L5	S69°53'77"	102.00
L6	S11°17'00"	52.46
L7	S21°17'30"	54.43
L8	S20°05'02"	61.53
L9	S47°14'14"E	70.39
L10	S27°35'39"	20.25
L11	S90°20'12"	30.25
L12	S67°05'11"	30.48
L13	S67°05'11"	30.48
L14	S67°05'11"	30.48
L15	A63°53'16"E	52.91
L16	S1°10'06"W	27.08
L17	S76°26'50"	37.23
L18	A55°55'31"	35.26
L19	S67°05'11"	30.48
L20	A81°53'53"	20.00
L21	A80°02'35"	18.06
L22	S1°15'53"W	67.02
L23	A69°27'24"	8.24
L24	A69°27'24"	106.10
L25	S91°52'33"	47.85
L26	S67°05'11"	30.48
L27	A81°53'53"	20.00
L28	A81°53'53"	20.00
L29	A81°53'53"	20.00
L30	A81°53'53"	20.00
L31	A81°53'53"	20.00
L32	A81°53'53"	20.00
L33	A81°53'53"	20.00
L34	A81°53'53"	20.00
L35	A81°53'53"	20.00
L36	A81°53'53"	20.00
L37	A81°53'53"	20.00
L38	A81°53'53"	20.00
L39	A81°53'53"	20.00
L40	A81°53'53"	20.00
L41	A81°53'53"	20.00
L42	A81°53'53"	20.00
L43	A81°53'53"	20.00
L44	A81°53'53"	20.00
L45	A81°53'53"	20.00
L46	A81°53'53"	20.00
L47	A81°53'53"	20.00
L48	A81°53'53"	20.00
L49	A81°53'53"	20.00
L50	A81°53'53"	20.00
L51	A81°53'53"	20.00
L52	A81°53'53"	20.00
L53	A81°53'53"	20.00
L54	A81°53'53"	20.00
L55	A81°53'53"	20.00
L56	A81°53'53"	20.00
L57	A81°53'53"	20.00
L58	A81°53'53"	20.00
L59	A81°53'53"	20.00
L60	A81°53'53"	20.00
L61	A81°53'53"	20.00
L62	A81°53'53"	20.00
L63	A81°53'53"	20.00
L64	A81°53'53"	20.00
L65	A81°53'53"	20.00
L66	A81°53'53"	20.00
L67	A81°53'53"	20.00
L68	A81°53'53"	20.00
L69	A81°53'53"	20.00
L70	A81°53'53"	20.00
L71	A81°53'53"	20.00
L72	A81°53'53"	20.00
L73	A81°53'53"	20.00
L74	A81°53'53"	20.00
L75	A81°53'53"	20.00
L76	A81°53'53"	20.00
L77	A81°53'53"	20.00
L78	A81°53'53"	20.00

Note: All bearings and distances shown are drawn and annotated in CA Zone Y NAD83 State Plane coordinates.

09/29/2005 R.M. Bk. 200, Pg. 93-99, Tract 14636.

101-39

**NOTICE**  
Assessor's Parcels are for tax assessment purposes only and do not indicate either parcel legality or a valid building sita.

Assessor's Map Bk, 101-Pg, 39  
County of Santa Barbara, Calif.

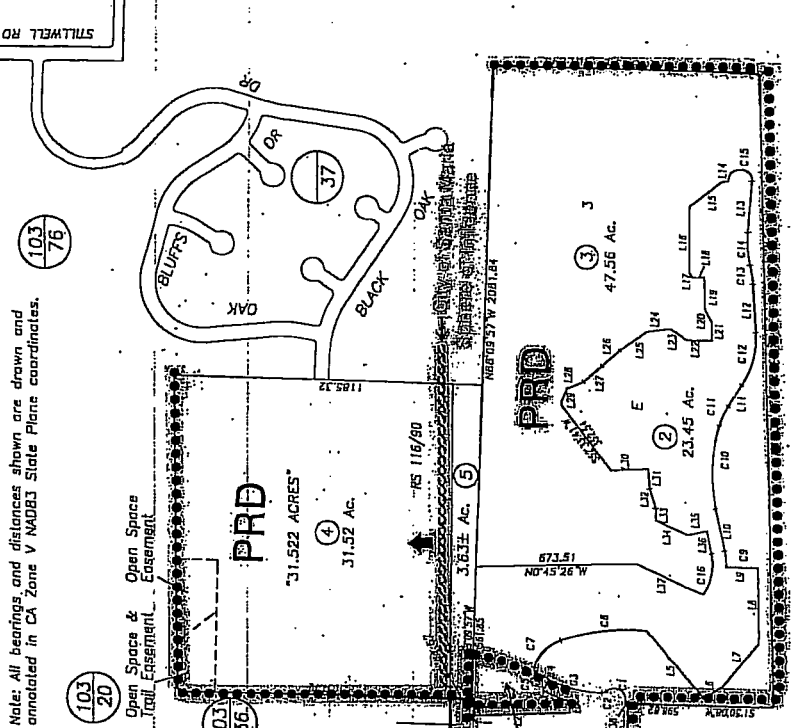
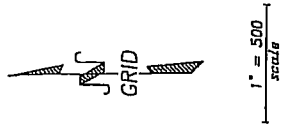
New page from  
par. of 010-019  
LD/06 010-019, renumbered to 05



101-40

POR: T9N R34W SBB&M

Note: All bearings and distances shown are drawn and annotated in CA Zone V NAD83 State Plane coordinates.



LINE BEARING	DISTANCE
L 1	N87°15'41"W 71.74
L 2	S72°14'42"E 43.53
L 3	S52°15'27"W 124.19
L 4	S52°15'27"W 56.40
L 5	S52°15'27"W 72.57
L 6	S72°14'42"E 43.53
L 7	S52°15'27"W 124.19
L 8	S52°15'27"W 56.40
L 9	S52°15'27"W 72.57
L 10	N87°15'41"W 71.74
L 11	N87°15'41"W 71.74
L 12	N87°15'41"W 71.74
L 13	N87°15'41"W 71.74
L 14	N87°15'41"W 71.74
L 15	N87°15'41"W 71.74
L 16	N87°15'41"W 71.74
L 17	N87°15'41"W 71.74
L 18	N87°15'41"W 71.74
L 19	N87°15'41"W 71.74
L 20	N87°15'41"W 71.74
L 21	N87°15'41"W 71.74
L 22	N87°15'41"W 71.74
L 23	N87°15'41"W 71.74
L 24	N87°15'41"W 71.74
L 25	N87°15'41"W 71.74
L 26	N87°15'41"W 71.74
L 27	N87°15'41"W 71.74
L 28	N87°15'41"W 71.74
L 29	N87°15'41"W 71.74
L 30	N87°15'41"W 71.74
L 31	N87°15'41"W 71.74
L 32	N87°15'41"W 71.74
L 33	N87°15'41"W 71.74
L 34	N87°15'41"W 71.74
L 35	N87°15'41"W 71.74
L 36	N87°15'41"W 71.74
L 37	N87°15'41"W 71.74
L 38	N87°15'41"W 71.74
L 39	N87°15'41"W 71.74
L 40	N87°15'41"W 71.74

LINE BEARING	DISTANCE
L 41	N87°15'41"W 71.74
L 42	N87°15'41"W 71.74
L 43	N87°15'41"W 71.74
L 44	N87°15'41"W 71.74
L 45	N87°15'41"W 71.74
L 46	N87°15'41"W 71.74
L 47	N87°15'41"W 71.74
L 48	N87°15'41"W 71.74
L 49	N87°15'41"W 71.74
L 50	N87°15'41"W 71.74
L 51	N87°15'41"W 71.74
L 52	N87°15'41"W 71.74
L 53	N87°15'41"W 71.74
L 54	N87°15'41"W 71.74
L 55	N87°15'41"W 71.74
L 56	N87°15'41"W 71.74
L 57	N87°15'41"W 71.74
L 58	N87°15'41"W 71.74
L 59	N87°15'41"W 71.74
L 60	N87°15'41"W 71.74
L 61	N87°15'41"W 71.74
L 62	N87°15'41"W 71.74
L 63	N87°15'41"W 71.74
L 64	N87°15'41"W 71.74
L 65	N87°15'41"W 71.74
L 66	N87°15'41"W 71.74
L 67	N87°15'41"W 71.74
L 68	N87°15'41"W 71.74
L 69	N87°15'41"W 71.74
L 70	N87°15'41"W 71.74

NO.	BEARING	LENGTH
C 1	S72°14'42"E	43.53
C 2	S52°15'27"W	124.19
C 3	S52°15'27"W	56.40
C 4	S52°15'27"W	72.57
C 5	N87°15'41"W	71.74
C 6	N87°15'41"W	71.74
C 7	N87°15'41"W	71.74
C 8	N87°15'41"W	71.74
C 9	N87°15'41"W	71.74
C 10	N87°15'41"W	71.74
C 11	N87°15'41"W	71.74
C 12	N87°15'41"W	71.74
C 13	N87°15'41"W	71.74
C 14	N87°15'41"W	71.74
C 15	N87°15'41"W	71.74
C 16	N87°15'41"W	71.74
C 17	N87°15'41"W	71.74
C 18	N87°15'41"W	71.74
C 19	N87°15'41"W	71.74
C 20	N87°15'41"W	71.74
C 21	N87°15'41"W	71.74
C 22	N87°15'41"W	71.74
C 23	N87°15'41"W	71.74
C 24	N87°15'41"W	71.74
C 25	N87°15'41"W	71.74
C 26	N87°15'41"W	71.74
C 27	N87°15'41"W	71.74
C 28	N87°15'41"W	71.74
C 29	N87°15'41"W	71.74
C 30	N87°15'41"W	71.74
C 31	N87°15'41"W	71.74
C 32	N87°15'41"W	71.74
C 33	N87°15'41"W	71.74
C 34	N87°15'41"W	71.74
C 35	N87°15'41"W	71.74
C 36	N87°15'41"W	71.74
C 37	N87°15'41"W	71.74
C 38	N87°15'41"W	71.74
C 39	N87°15'41"W	71.74
C 40	N87°15'41"W	71.74

All Parcels Within -ORC  
(Orcutt Community Plan  
Overlay District)

**NOTICE**  
Assessor Parcels are for tax assessment purposes only and do not indicate either parcel legality or a valid building site.

Assessor's Map Bk; 101-Pg, 40  
County of Santa Barbara, Calif.

09/29/2005 R.M. Bk. 200, Pg. 93-99, Tract 14636

101-40

LD/07 04 - Open Space & Trail Easement

EXHIBIT "C"

Rice Ranch Master Tract Map, Proposed Dedications (Page 7 of 7), received September 7, 2006.

