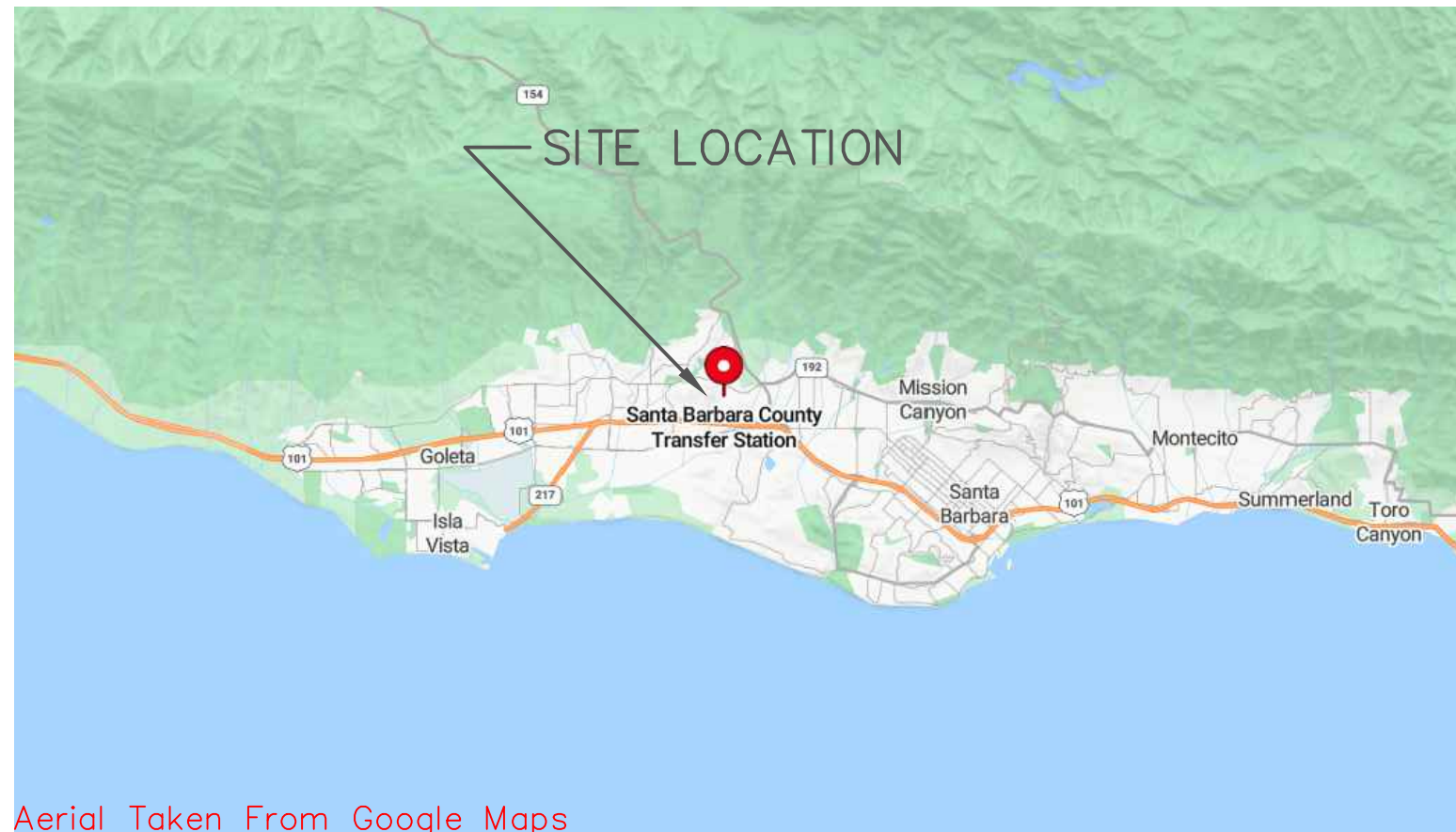


COUNTY OF SANTA BARBARA  
DEPARTMENT OF PUBLIC WORKS  
RESOURCE RECOVERY AND WASTE MANAGEMENT

SOUTH COAST RECYCLING AND TRANSFER  
STATION  
PCC SLAB REPAIR AND PIT FILL 2025



Aerial Taken From Google Maps

SHEET INDEX

- C-1 TITLE SHEET
- C-2 SITE MAP
- C-3 TIP PAD REPAIR
- C-4 PIT FILL
- C-5 PIT FILL

APPROVED – CHAIR, BOARD OF SUPERVISORS	DATE
<div>DocuSigned by: <i>Chris Swedden</i> 07C5C45E0B9B48C</div>	8/13/2025   1:47 PM PDT
APPROVED – DIRECTOR OF PUBLIC WORKS	DATE
<div>DocuSigned by: <i>Scottie Spence</i> E31DE190C737A06</div>	8/13/2025   10:52 AM PDT
APPROVED – DEPUTY DIRECTOR	DATE
<div>DocuSigned by: <i>James Perry</i> 102E0A0E0A020F2</div>	8/11/2025   1:50 PM PDT
APPROVED – PROJECT ENGINEER	DATE
<div>DocuSigned by: <i>Liam Gust</i> 02BBAF202E0446</div>	8/11/2025   1:51 PM PDT
APPROVED – PROJECT MANAGER	DATE

DocuSigned by:  
*Jamie R. Perry*  
162E0A0E0A020F2

  
\_\_\_\_\_  
Jamie R Perry, PE  
REGISTERED CIVIL ENGINEER

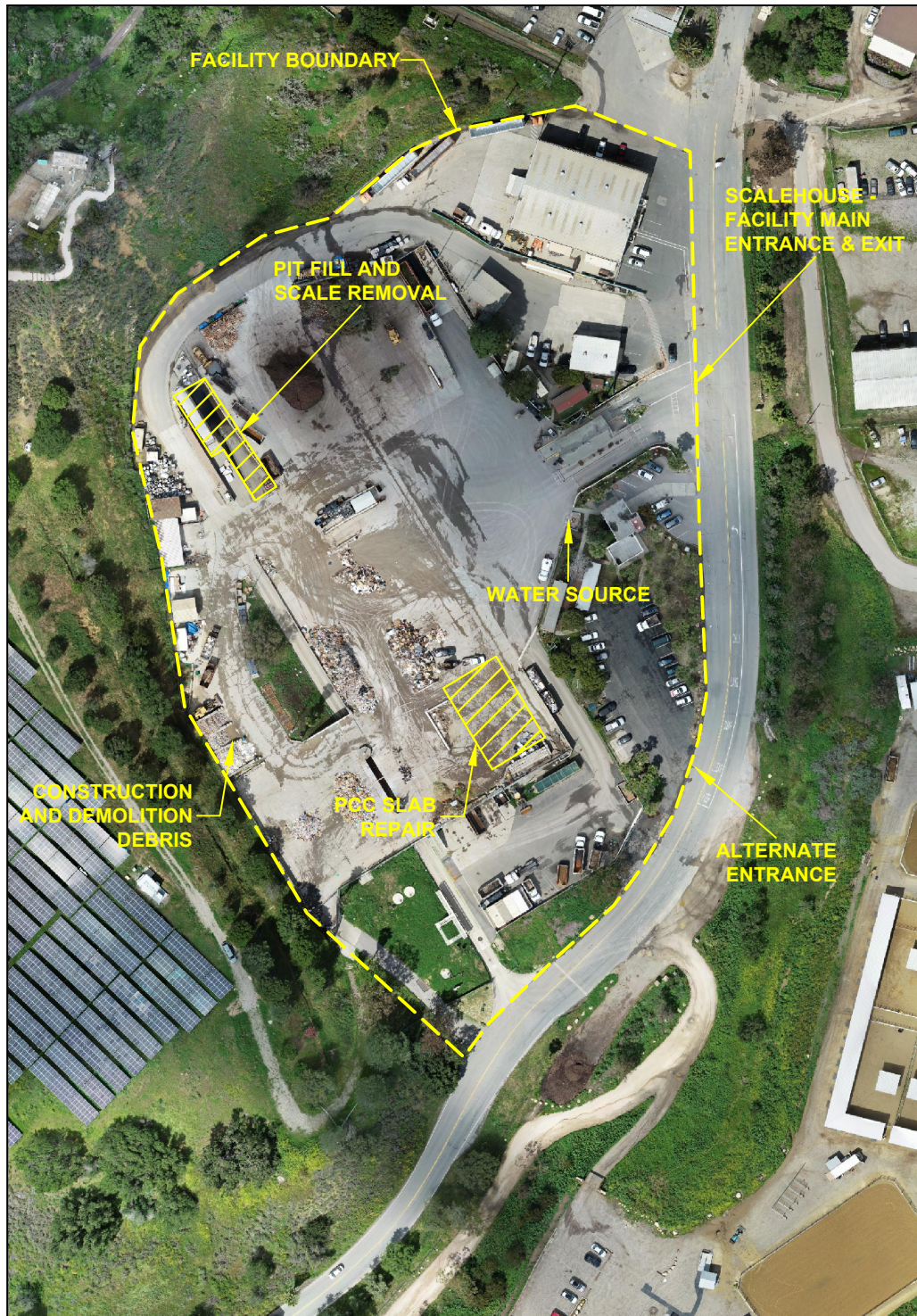
8/11/2025 | 1:50 PM PDT

DATE



COUNTY OF SANTA BARBARA DEPARTMENT OF PUBLIC WORKS RESOURCE RECOVERY & WASTE MANAGEMENT DIVISION			
PCC SLAB REPAIR AND PIT FILL 2025 SOUTH COAST RECYCLING AND TRANSFER STATION TITLE SHEET			
DRAWN BY:BF	CHECKED BY:	03/18/2025	C-1



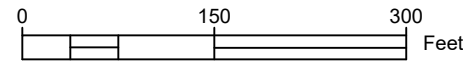


### GENERAL NOTES – PCC SLAB REPAIR

1. TOTAL PROJECT AREA IS 4,482 SQUARE FEET
2. NO UTILITIES ARE KNOWN TO EXIST IN PROJECT AREA.
3. CONTRACTOR MUST DELINEATE WORK AREA AND PROTECT FROM FACILITY OPERATIONS. INTERRUPTIONS TO FACILITY OPERATIONS MUST BE KEPT TO A MINIMUM.
4. DEMOLITION DEBRIS WILL BE ACCEPTED ON-SITE FOR DISPOSAL FREE OF CHARGE. PCC DEBRIS MUST BE LESS THAN 2 FEET IN DIAMETER AND MUST HAVE PROTRUDING REBAR TRIMMED OFF. PLACE TRIMMED REBAR AND CLEAN DEBRIS IN DESIGNATED LOCATIONS AT THE FACILITY.
5. CONTRACTOR WILL VERIFY ALL DIMENSIONS, ELEVATIONS, AND SITE CONDITIONS BEFORE STARTING WORK. NOTIFY THE ENGINEER IMMEDIATELY OF ANY DISCREPANCIES.
6. SUBMIT PROFILES FOR PCC MIX AND JOINT COMPOUND TO THE ENGINEER FOR APPROVAL PRIOR TO STARTING WORK.
7. SUBGRADE MATERIAL DEMOLISHED UNDER EXISTING PCC SLAB MAY BE USED AS CLEAN FILL FOR PIT FILL PROJECT (APPROXIMATELY 84 CY).
8. LIFT COMPACTION AND PCC COMPRESSIVE STRENGTH WILL BE TESTED BY 3RD PARTY GEO-TECHNICAL CONSULTANT

### GENERAL NOTES – PIT FILL & SCALE REMOVAL

1. TOTAL PROJECT AREA IS 3,200 SQUARE FEET
2. ALL KNOWN UTILITIES ARE MARKED ON THE PLANS
3. CONTRACTOR MUST DELINEATE WORK AREA AND PROTECT FROM FACILITY OPERATIONS. INTERRUPTIONS TO FACILITY OPERATIONS MUST BE KEPT TO A MINIMUM.
4. DEMOLITION DEBRIS WILL BE ACCEPTED ON SITE FOR DISPOSAL FREE OF CHARGE. SEPARATE METAL WASTE FROM PCC WASTE. PCC DEBRIS MUST BE LESS THAN 2 FEET AND HAVE PROTRUDING REBAR TRIMMED. METAL WASTE MUST BE FREE OF PCC AND CUT TO FIT INTO A 938 LOADER BUCKET. CONTRACTOR WILL PLACE DEMOLITION DEBRIS IN ON-SITE LOCATIONS DESIGNATED BY THE PROJECT ENGINEER.
5. CONTRACTOR WILL VERIFY ALL DIMENSIONS, ELEVATIONS, AND SITE CONDITIONS BEFORE STARTING WORK. NOTIFY THE ENGINEER IMMEDIATELY OF ANY DISCREPANCIES.
6. SUBMIT PROFILES FOR PCC MIX AND JOINT COMPOUND TO THE ENGINEER FOR APPROVAL PRIOR TO STARTING WORK.
7. COUNTY WILL PROVIDE ALL FILL MATERIAL. FILL MATERIAL WILL BE STOCKPILED ON-SITE.
8. LIFT COMPACTION AND PCC COMPRESSIVE STRENGTH WILL BE TESTED BY 3RD PARTY GEO-TECHNICAL CONSULTANT



COUNTY OF SANTA BARBARA  
DEPARTMENT OF PUBLIC WORKS  
RESOURCE RECOVERY & WASTE MANAGEMENT DIVISION

## PCC SLAB REPAIR AND PIT FILL 2025 SOUTH COAST RECYCLING AND TRANSFER STATION SITE MAP

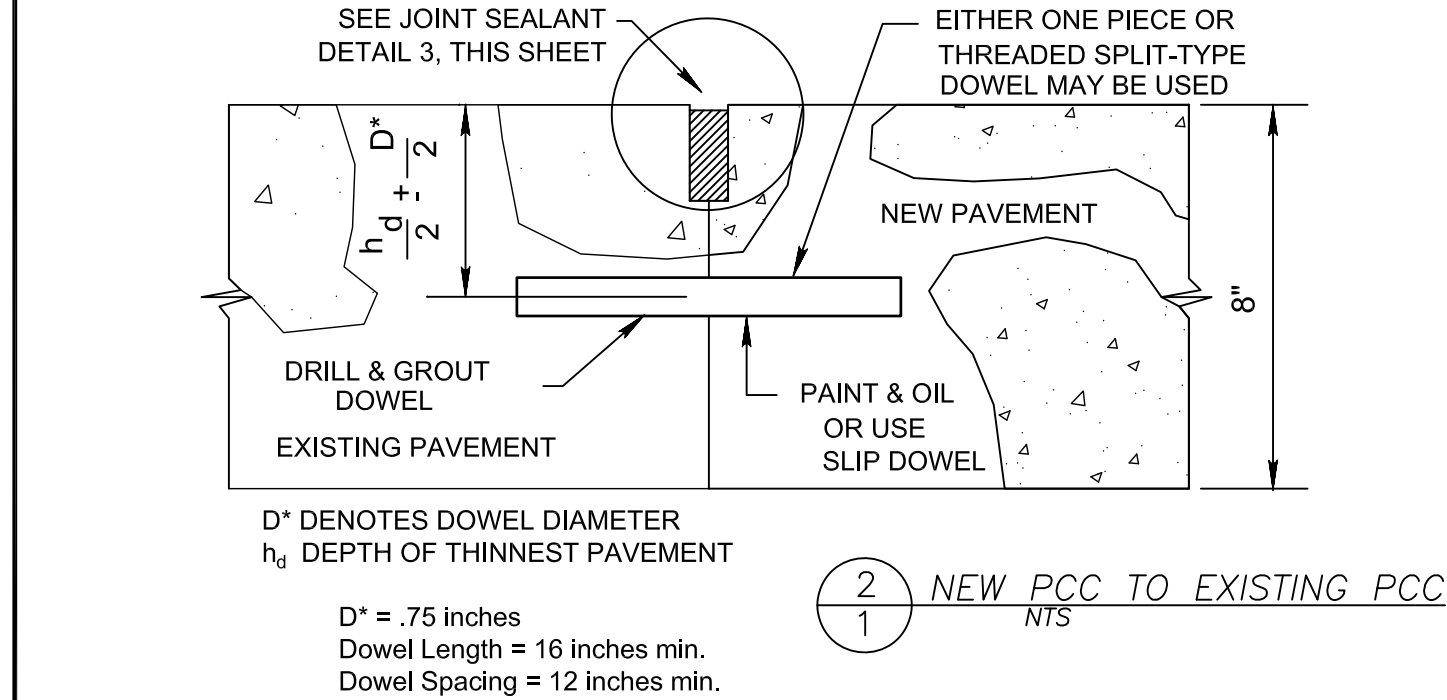
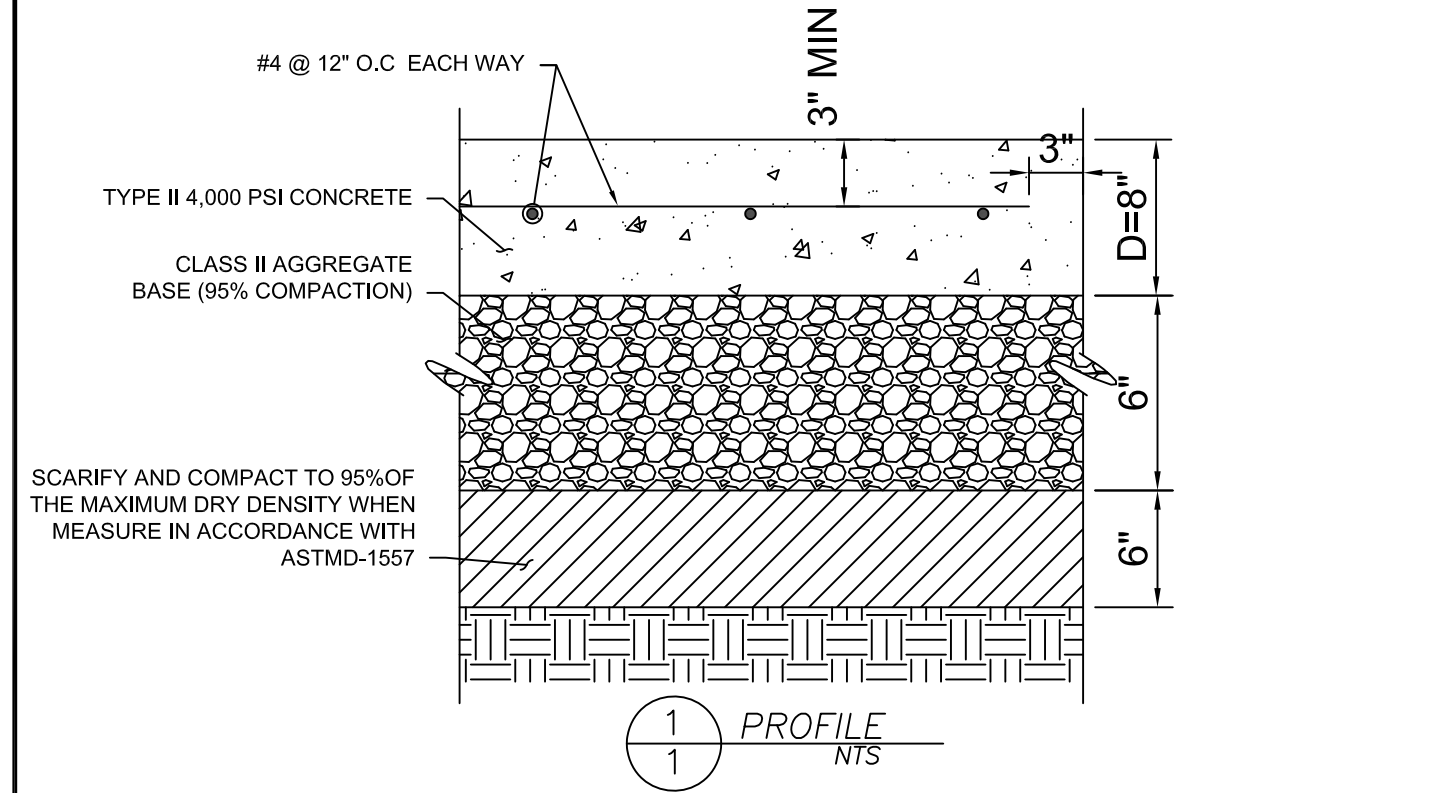
DRAWN BY:LG

CHECKED BY:

03/18/2025

C-2



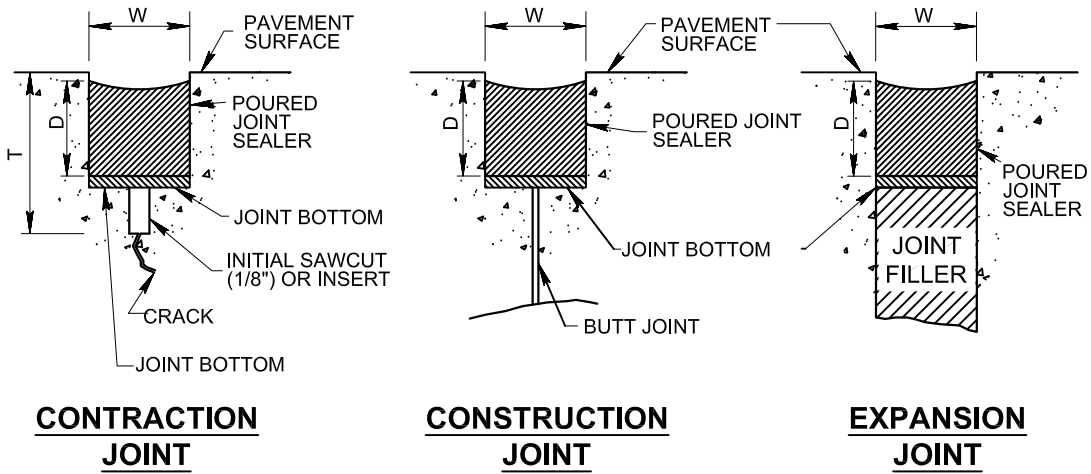


GENERAL NOTES

1. MATCH NEW PCC SLAB ELEVATIONS TO EXISTING.
2. CONCRETE CONSTRUCTION SHALL CONFORM TO ACI 318, "BUILDING CODE REQUIREMENTS FOR STRUCTURAL CONCRETE"
3. CONCRETE SHALL HAVE A MINIMUM ULTIMATE COMPRESSIVE STRENGTH OF 4,000 PSI AT 36 HOURS. EARLY STRENGTH CONCRETE IS PREFERABLE
4. CEMENT SHALL BE TYPE II/V CONFORMING TO ASTM C-150
5. ALL AGGREGATE USED IN CONCRETE SHALL CONFORM TO ASTM C-33 AGGREGATE SHALL BE WELL GRADED WITH A MAXIMUM SIZE OF 3/4"
6. ALL EXPOSED CORNERS OF CONCRETE SHALL HAVE 3/4" RADIUS
7. PCC SLAB SHALL BE REINFORCED WITH #4 REBAR SPACED AT 12-INCHES ON-CENTER (DETAIL 1) AND DOWELED INTO EXISTING SLAB (DETAIL 2)
8. ALL REINFORCING STEEL SHALL BE SECURED IN POSITION PRIOR TO AND WHILE PLACING CONCRETE
9. ALL REINFORCING STEEL SHALL CONFORM TO ASTM A615, GRADE 60
10. MINIMUM PROTECTIVE COVER FOR REINFORCING STEEL SHALL BE 3"
11. COUNTY WILL ACCEPT CONSTRUCTION & DEMOLITION DEBRIS ON-SITE FOR DISPOSAL



DEMOLITION & CONSTRUCTION PLAN



3 JOINT SEALANTS 1 NTS

W = WIDTH OF SEALANT RESERVOIR (1/2")

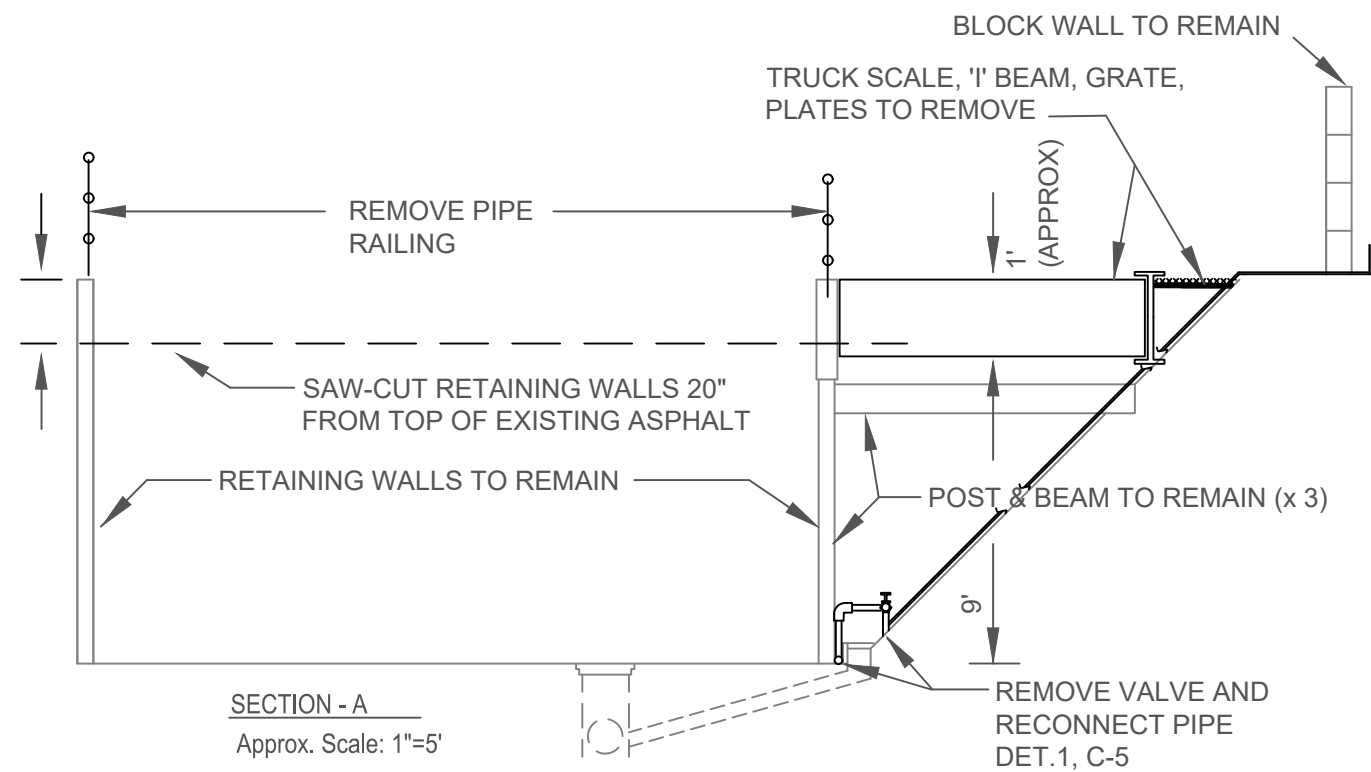
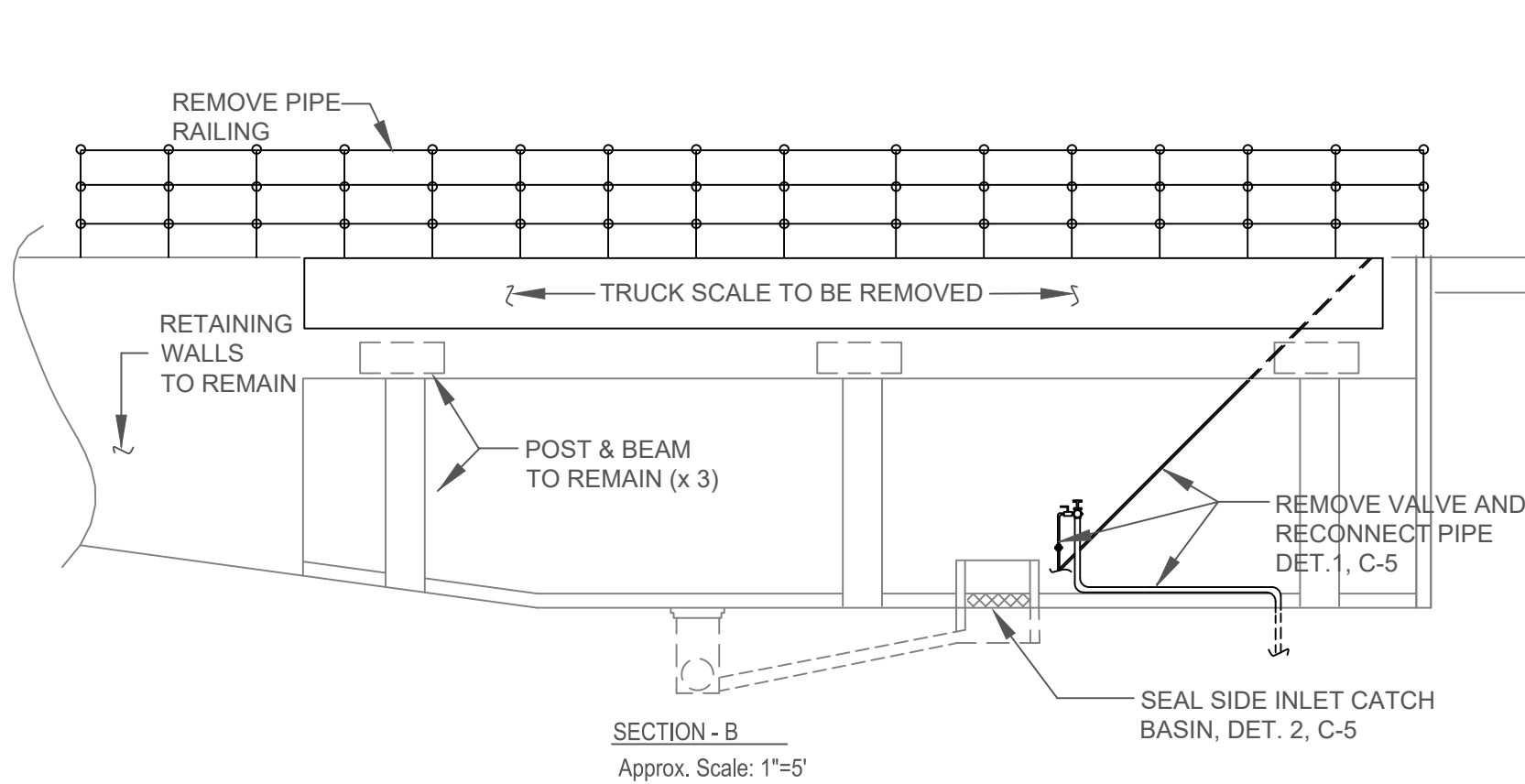
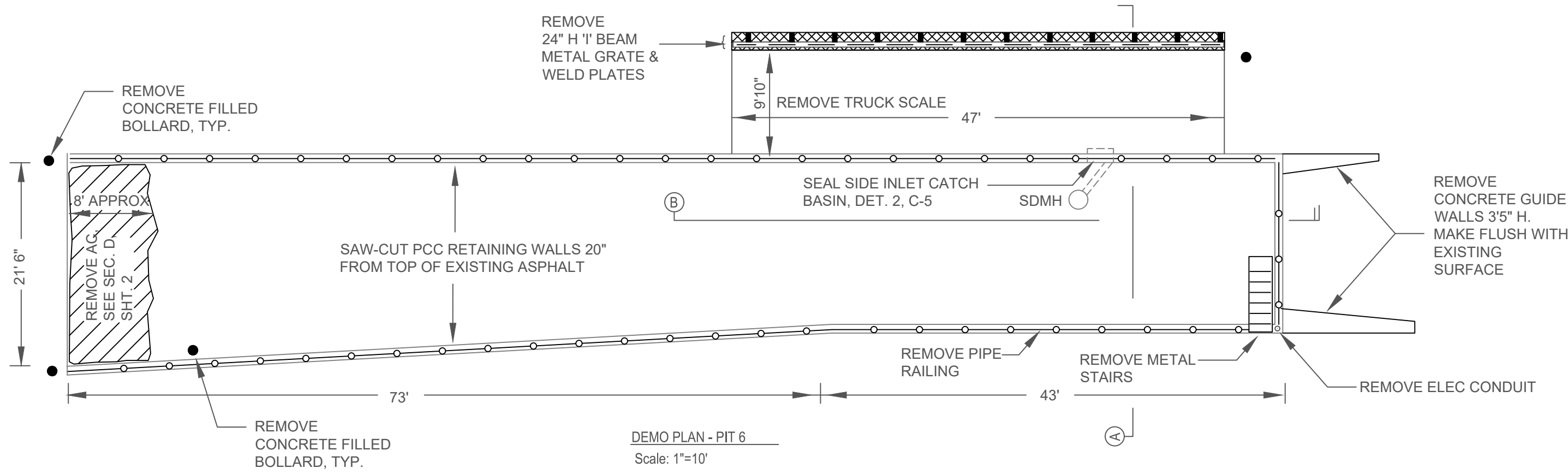
D = DEPTH OF SEALANT (1.0 TO 1.5 x W)

T = DEPTH OF INITIAL SAWCUT OR INSERT TYPE JOINT FORMER (CONTRACTION JOINT)

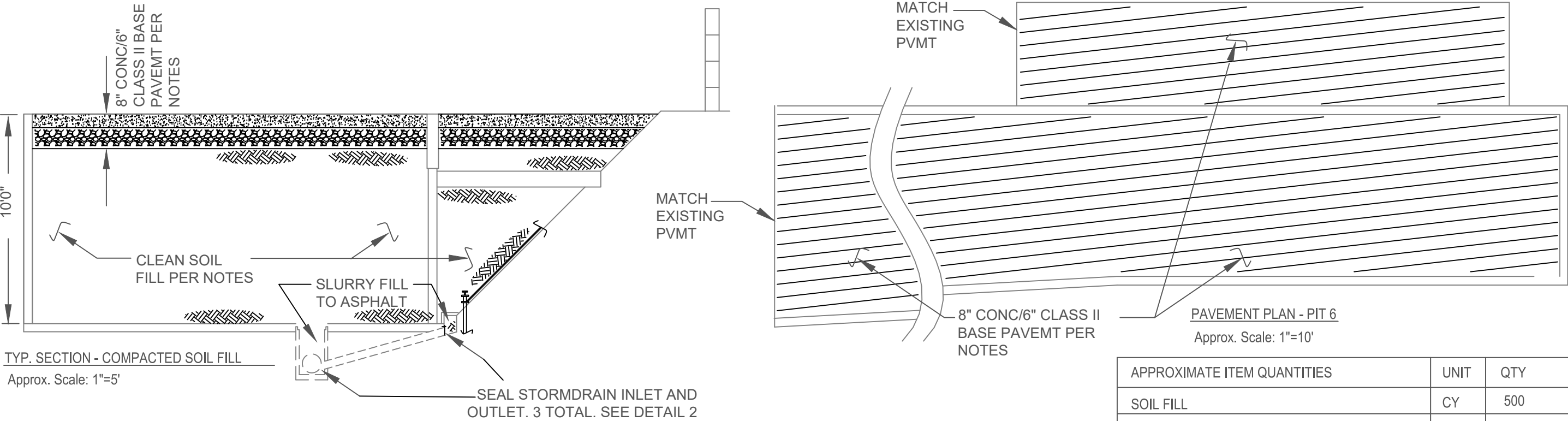
a. 1/4 SLAB THICKNESS FOR PAVEMENTS LESS THAN 12 INCHES

NOTE: TOP OF SEALANT WILL BE 1/8-IN. TO 1/4-IN. BELOW TOP OF PAVEMENT.

COUNTY OF SANTA BARBARA DEPARTMENT OF PUBLIC WORKS RESOURCE RECOVERY & WASTE MANAGEMENT DIVISION			
PCC SLAB REPAIR AND PIT FILL 2025 SOUTH COAST RECYCLING AND TRANSFER STATION TIP PAD REPAIR			
DRAWN BY:BF	CHECKED BY:LG	03/18/2025	C-3



COUNTY OF SANTA BARBARA DEPARTMENT OF PUBLIC WORKS RESOURCE RECOVERY & WASTE MANAGEMENT DIVISION			
PCC SLAB REPAIR AND PIT FILL 2025 SOUTH COAST RECYCLING AND TRANSFER STATION PIT FILL			
DRAWN BY:ND	CHECKED BY:	03/18/2025	C-4



APPROXIMATE ITEM QUANTITIES	UNIT	QTY
SOIL FILL	CY	500
8" CONC/6" CLASS II BASE WITH REBAR	SF	3,200

- DEMOLITION NOTES**
1. DEMO MATERIAL SHALL BE DISPOSED ON SITE UNDER COUNTY DIRECTION
- CLEAN SOIL FILL NOTES**
1. COUNTY WILL PROVIDE FILL MATERIAL PRIOR TO START OF CONSTRUCTION. MATERIAL WILL BE STOCKPILED ON-SITE
  2. SOIL FILL SHALL BE PLACED AT OPTIMUM MOISTURE CONTENT, PLACED IN 6 TO 8 INCH LIFTS, AND COMPACTED TO REACH 90% COMPACTION MINIMUM
  3. 3RD PARTY GEOTECH WILL WILL TEST LIFT COMPACTION
- CLASS II BASE NOTES**
1. CLASS II BASE SHALL BE PLACED AT OPTIMUM MOISTURE CONTENT, PLACED IN A 6 INCH LIFT, AND COMPACTED TO REACH 90% COMPACTION MINIMUM
  2. 3RD PARTY GEOTECH WILL TEST LIFT COMPACTION
- PCC NOTES**
1. PCC MIX 4000 PSI MIN @ 36 HRS
  2. PAVEMENT REINFORCEMENT #4 @ 12" BOTH WAYS
  3. MATCH NEW PCC SLAB TO EXISTING ELEVATIONS
  4. 3RD PARTY GEOTECH WILL REQUIRE THREE (3) TEST SAMPLES

COUNTY OF SANTA BARBARA  
DEPARTMENT OF PUBLIC WORKS  
RESOURCE RECOVERY & WASTE MANAGEMENT DIVISION

PCC SLAB REPAIR AND PIT FILL 2025  
SOUTH COAST RECYCLING AND TRANSFER STATION  
PIT FILL

DRAWN BY:ND	CHECKED BY:	3/18/2025	C-5
-------------	-------------	-----------	-----

