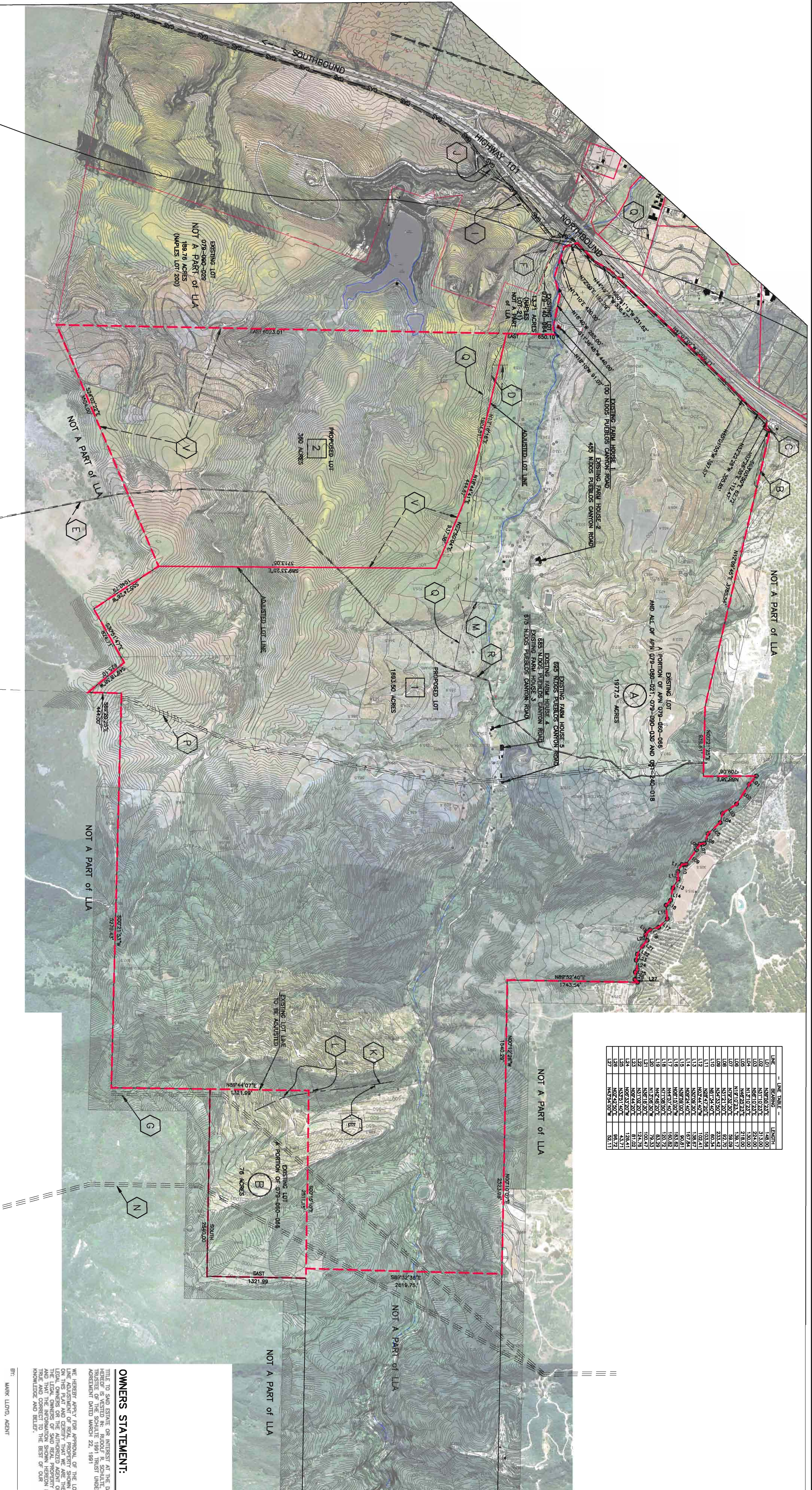
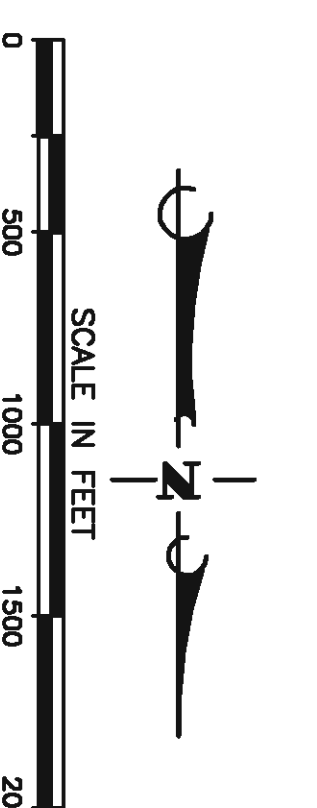


LINE	LINE TABLE	LENGTH
101	N89°52'23"E	148.00
102	N81°10'23"E	313.00
103	N89°10'23"E	136.00
104	N49°25'23"E	218.00
105	N1°10'23"E	198.17
106	N1°10'23"E	198.17
107	N81°10'23"E	233.42
108	N81°10'23"E	103.26
109	N89°10'23"E	103.26
110	N89°10'23"E	102.41
111	N89°10'23"E	102.41
112	N89°10'23"E	201.61
113	N89°10'23"E	201.61
114	N89°10'23"E	183.82
115	N89°10'23"E	183.82
116	N89°10'23"E	183.82
117	N89°10'23"E	183.82
118	N89°10'23"E	183.82
119	N89°10'23"E	183.82
120	N89°10'23"E	183.82
121	N89°10'23"E	183.82
122	N89°10'23"E	183.82
123	N89°10'23"E	183.82
124	N89°10'23"E	183.82
125	N89°10'23"E	183.82
126	N89°10'23"E	183.82
127	N89°10'23"E	183.82
128	N89°10'23"E	183.82
129	N89°10'23"E	183.82
130	N89°10'23"E	183.82
131	N89°10'23"E	183.82
132	N89°10'23"E	183.82
133	N89°10'23"E	183.82
134	N89°10'23"E	183.82
135	N89°10'23"E	183.82
136	N89°10'23"E	183.82
137	N89°10'23"E	183.82



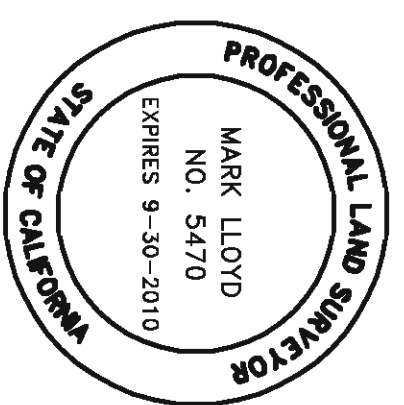
OWNERS STATEMENT:
 TITLE TO SAID ESTATE OR INTEREST AT THE TIME HEREIN MADE BY THE TRUSTEES OF THE SCHULTE TRUST AGREEMENT DATED MARCH 22, 1991
 WE HEREBY APPLY FOR APPROVAL OF THE LOT LINE ADJUSTMENT AND CERTIFY THAT WE ARE THE LEGAL OWNERS OF THE SAID PARCELS AND THAT THE INFORMATION SHOWN HEREON IS TRUE AND CORRECT TO THE BEST OF OUR KNOWLEDGE AND BELIEF.

BY: MARK LLOYD, AGENT

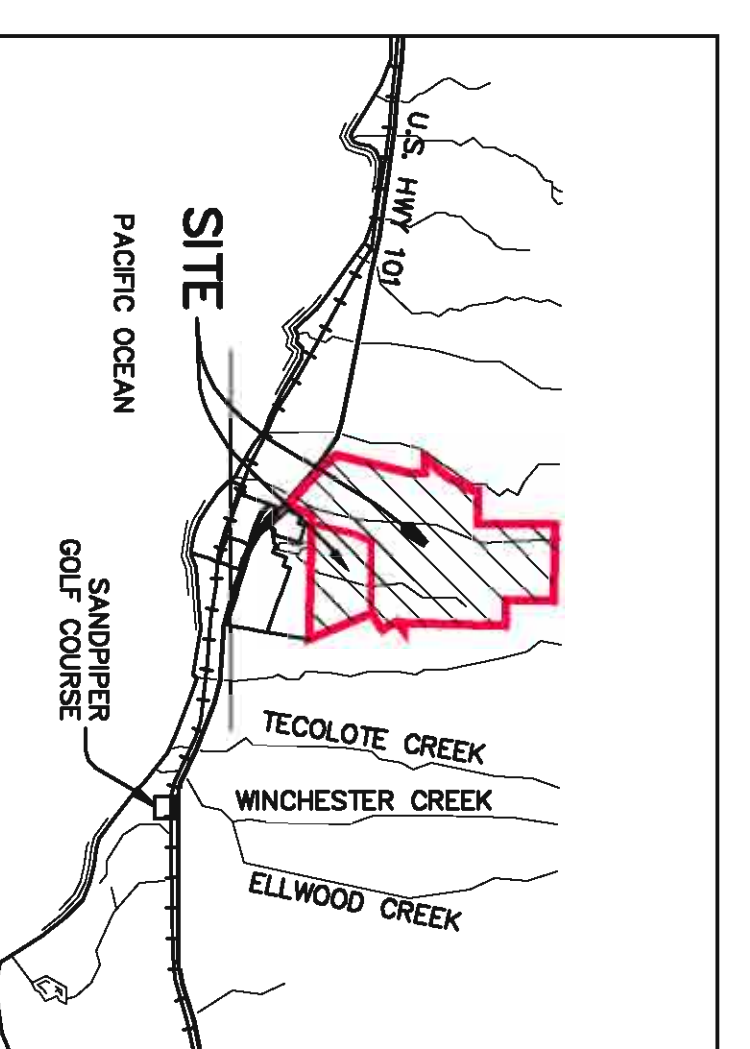


09LLA--00000--XXXXX

NORTH DOS PUEBLOS RANCH
 BEING A LOT LINE ADJUSTMENT OF TWO (2) LOTS
 WITHIN ASSESSOR'S PARCELS 079-060-066,
 079-080-021, 079-090-030 AND 081-240-018;
 IN THE COUNTY OF SANTA BARBARA,
 STATE OF CALIFORNIA



PREPARED UNDER THE DIRECTION OF
 MARK LLOYD P.L.S. 5470



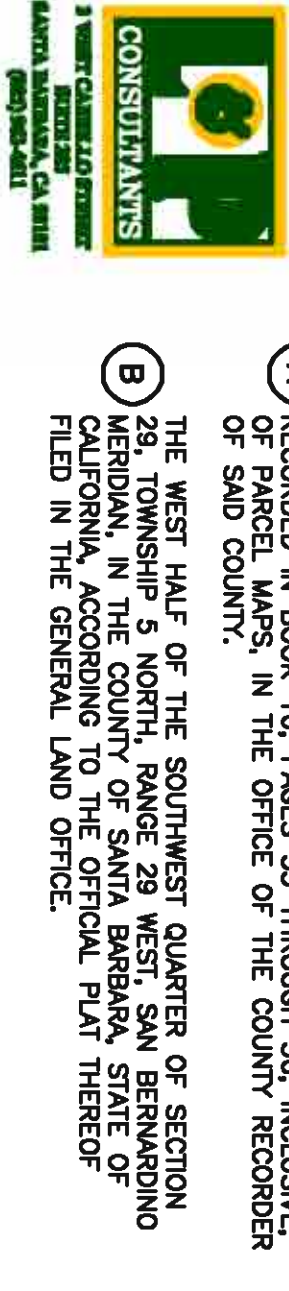
EASEMENT NOTES (CONT.):

- (A) EASEMENT FOR PUBLIC UTILITIES, GRANTED TO SOUTHERN CALIFORNIA Edison COMPANY, A CORPORATION, BY INSTRUMENT NO. 1894, BOOK 1924, PAGE 264, OF OFFICIAL RECORDS, (P/R #11).
- (B) EASEMENT FOR PUBLIC UTILITIES, GRANTED TO SOUTHERN CALIFORNIA Edison COMPANY, A CORPORATION, BY INSTRUMENT NO. 1894, BOOK 1924, PAGE 264, OF OFFICIAL RECORDS, (P/R #11).
- (C) EASEMENT FOR PUBLIC UTILITIES, GRANTED TO SOUTHERN CALIFORNIA Edison COMPANY, A CORPORATION, BY INSTRUMENT NO. 1894, BOOK 1924, PAGE 264, OF OFFICIAL RECORDS, (P/R #11).
- (D) EASEMENT FOR PUBLIC UTILITIES, GRANTED TO SOUTHERN CALIFORNIA Edison COMPANY, A CORPORATION, BY INSTRUMENT NO. 1894, BOOK 1924, PAGE 264, OF OFFICIAL RECORDS, (P/R #11).
- (E) EASEMENT FOR PUBLIC UTILITIES, GRANTED TO SOUTHERN CALIFORNIA Edison COMPANY, A CORPORATION, BY INSTRUMENT NO. 1894, BOOK 1924, PAGE 264, OF OFFICIAL RECORDS, (P/R #11).
- (F) EASEMENT FOR PUBLIC UTILITIES, GRANTED TO SOUTHERN CALIFORNIA Edison COMPANY, A CORPORATION, BY INSTRUMENT NO. 1894, BOOK 1924, PAGE 264, OF OFFICIAL RECORDS, (P/R #11).
- (G) EASEMENT FOR PUBLIC UTILITIES, GRANTED TO SOUTHERN CALIFORNIA Edison COMPANY, A CORPORATION, BY INSTRUMENT NO. 1894, BOOK 1924, PAGE 264, OF OFFICIAL RECORDS, (P/R #11).
- (H) EASEMENT FOR PUBLIC UTILITIES, GRANTED TO SOUTHERN CALIFORNIA Edison COMPANY, A CORPORATION, BY INSTRUMENT NO. 1894, BOOK 1924, PAGE 264, OF OFFICIAL RECORDS, (P/R #11).
- (I) EASEMENT FOR PUBLIC UTILITIES, GRANTED TO SOUTHERN CALIFORNIA Edison COMPANY, A CORPORATION, BY INSTRUMENT NO. 1894, BOOK 1924, PAGE 264, OF OFFICIAL RECORDS, (P/R #11).
- (J) EASEMENT FOR PUBLIC UTILITIES, GRANTED TO SOUTHERN CALIFORNIA Edison COMPANY, A CORPORATION, BY INSTRUMENT NO. 1894, BOOK 1924, PAGE 264, OF OFFICIAL RECORDS, (P/R #11).
- (K) EASEMENT FOR PUBLIC UTILITIES, GRANTED TO SOUTHERN CALIFORNIA Edison COMPANY, A CORPORATION, BY INSTRUMENT NO. 1894, BOOK 1924, PAGE 264, OF OFFICIAL RECORDS, (P/R #11).
- (L) EASEMENT FOR PUBLIC UTILITIES, GRANTED TO SOUTHERN CALIFORNIA Edison COMPANY, A CORPORATION, BY INSTRUMENT NO. 1894, BOOK 1924, PAGE 264, OF OFFICIAL RECORDS, (P/R #11).
- (M) EASEMENT FOR PUBLIC UTILITIES, GRANTED TO SOUTHERN CALIFORNIA Edison COMPANY, A CORPORATION, BY INSTRUMENT NO. 1894, BOOK 1924, PAGE 264, OF OFFICIAL RECORDS, (P/R #11).
- (N) EASEMENT FOR PUBLIC UTILITIES, GRANTED TO SOUTHERN CALIFORNIA Edison COMPANY, A CORPORATION, BY INSTRUMENT NO. 1894, BOOK 1924, PAGE 264, OF OFFICIAL RECORDS, (P/R #11).
- (O) EASEMENT FOR PUBLIC UTILITIES, GRANTED TO SOUTHERN CALIFORNIA Edison COMPANY, A CORPORATION, BY INSTRUMENT NO. 1894, BOOK 1924, PAGE 264, OF OFFICIAL RECORDS, (P/R #11).
- (P) EASEMENT FOR PUBLIC UTILITIES, GRANTED TO SOUTHERN CALIFORNIA Edison COMPANY, A CORPORATION, BY INSTRUMENT NO. 1894, BOOK 1924, PAGE 264, OF OFFICIAL RECORDS, (P/R #11).
- (Q) EASEMENT FOR PUBLIC UTILITIES, GRANTED TO SOUTHERN CALIFORNIA Edison COMPANY, A CORPORATION, BY INSTRUMENT NO. 1894, BOOK 1924, PAGE 264, OF OFFICIAL RECORDS, (P/R #11).
- (R) EASEMENT FOR PUBLIC UTILITIES, GRANTED TO SOUTHERN CALIFORNIA Edison COMPANY, A CORPORATION, BY INSTRUMENT NO. 1894, BOOK 1924, PAGE 264, OF OFFICIAL RECORDS, (P/R #11).
- (S) EASEMENT FOR PUBLIC UTILITIES, GRANTED TO SOUTHERN CALIFORNIA Edison COMPANY, A CORPORATION, BY INSTRUMENT NO. 1894, BOOK 1924, PAGE 264, OF OFFICIAL RECORDS, (P/R #11).
- (T) EASEMENT FOR PUBLIC UTILITIES, GRANTED TO SOUTHERN CALIFORNIA Edison COMPANY, A CORPORATION, BY INSTRUMENT NO. 1894, BOOK 1924, PAGE 264, OF OFFICIAL RECORDS, (P/R #11).
- (U) EASEMENT FOR PUBLIC UTILITIES, GRANTED TO SOUTHERN CALIFORNIA Edison COMPANY, A CORPORATION, BY INSTRUMENT NO. 1894, BOOK 1924, PAGE 264, OF OFFICIAL RECORDS, (P/R #11).
- (V) EASEMENT FOR PUBLIC UTILITIES, GRANTED TO SOUTHERN CALIFORNIA Edison COMPANY, A CORPORATION, BY INSTRUMENT NO. 1894, BOOK 1924, PAGE 264, OF OFFICIAL RECORDS, (P/R #11).

EASEMENT NOTES:

- (A) EASEMENT FOR PUBLIC UTILITIES, GRANTED TO SOUTHERN CALIFORNIA Edison COMPANY, A CORPORATION, BY INSTRUMENT NO. 1894, BOOK 1924, PAGE 264, OF OFFICIAL RECORDS, (P/R #11).
- (B) EASEMENT FOR PUBLIC UTILITIES, GRANTED TO SOUTHERN CALIFORNIA Edison COMPANY, A CORPORATION, BY INSTRUMENT NO. 1894, BOOK 1924, PAGE 264, OF OFFICIAL RECORDS, (P/R #11).
- (C) EASEMENT FOR PUBLIC UTILITIES, GRANTED TO SOUTHERN CALIFORNIA Edison COMPANY, A CORPORATION, BY INSTRUMENT NO. 1894, BOOK 1924, PAGE 264, OF OFFICIAL RECORDS, (P/R #11).
- (D) EASEMENT FOR PUBLIC UTILITIES, GRANTED TO SOUTHERN CALIFORNIA Edison COMPANY, A CORPORATION, BY INSTRUMENT NO. 1894, BOOK 1924, PAGE 264, OF OFFICIAL RECORDS, (P/R #11).
- (E) EASEMENT FOR PUBLIC UTILITIES, GRANTED TO SOUTHERN CALIFORNIA Edison COMPANY, A CORPORATION, BY INSTRUMENT NO. 1894, BOOK 1924, PAGE 264, OF OFFICIAL RECORDS, (P/R #11).
- (F) EASEMENT FOR PUBLIC UTILITIES, GRANTED TO SOUTHERN CALIFORNIA Edison COMPANY, A CORPORATION, BY INSTRUMENT NO. 1894, BOOK 1924, PAGE 264, OF OFFICIAL RECORDS, (P/R #11).
- (G) EASEMENT FOR PUBLIC UTILITIES, GRANTED TO SOUTHERN CALIFORNIA Edison COMPANY, A CORPORATION, BY INSTRUMENT NO. 1894, BOOK 1924, PAGE 264, OF OFFICIAL RECORDS, (P/R #11).
- (H) EASEMENT FOR PUBLIC UTILITIES, GRANTED TO SOUTHERN CALIFORNIA Edison COMPANY, A CORPORATION, BY INSTRUMENT NO. 1894, BOOK 1924, PAGE 264, OF OFFICIAL RECORDS, (P/R #11).
- (I) EASEMENT FOR PUBLIC UTILITIES, GRANTED TO SOUTHERN CALIFORNIA Edison COMPANY, A CORPORATION, BY INSTRUMENT NO. 1894, BOOK 1924, PAGE 264, OF OFFICIAL RECORDS, (P/R #11).
- (J) EASEMENT FOR PUBLIC UTILITIES, GRANTED TO SOUTHERN CALIFORNIA Edison COMPANY, A CORPORATION, BY INSTRUMENT NO. 1894, BOOK 1924, PAGE 264, OF OFFICIAL RECORDS, (P/R #11).
- (K) EASEMENT FOR PUBLIC UTILITIES, GRANTED TO SOUTHERN CALIFORNIA Edison COMPANY, A CORPORATION, BY INSTRUMENT NO. 1894, BOOK 1924, PAGE 264, OF OFFICIAL RECORDS, (P/R #11).
- (L) EASEMENT FOR PUBLIC UTILITIES, GRANTED TO SOUTHERN CALIFORNIA Edison COMPANY, A CORPORATION, BY INSTRUMENT NO. 1894, BOOK 1924, PAGE 264, OF OFFICIAL RECORDS, (P/R #11).
- (M) EASEMENT FOR PUBLIC UTILITIES, GRANTED TO SOUTHERN CALIFORNIA Edison COMPANY, A CORPORATION, BY INSTRUMENT NO. 1894, BOOK 1924, PAGE 264, OF OFFICIAL RECORDS, (P/R #11).
- (N) EASEMENT FOR PUBLIC UTILITIES, GRANTED TO SOUTHERN CALIFORNIA Edison COMPANY, A CORPORATION, BY INSTRUMENT NO. 1894, BOOK 1924, PAGE 264, OF OFFICIAL RECORDS, (P/R #11).
- (O) EASEMENT FOR PUBLIC UTILITIES, GRANTED TO SOUTHERN CALIFORNIA Edison COMPANY, A CORPORATION, BY INSTRUMENT NO. 1894, BOOK 1924, PAGE 264, OF OFFICIAL RECORDS, (P/R #11).
- (P) EASEMENT FOR PUBLIC UTILITIES, GRANTED TO SOUTHERN CALIFORNIA Edison COMPANY, A CORPORATION, BY INSTRUMENT NO. 1894, BOOK 1924, PAGE 264, OF OFFICIAL RECORDS, (P/R #11).
- (Q) EASEMENT FOR PUBLIC UTILITIES, GRANTED TO SOUTHERN CALIFORNIA Edison COMPANY, A CORPORATION, BY INSTRUMENT NO. 1894, BOOK 1924, PAGE 264, OF OFFICIAL RECORDS, (P/R #11).
- (R) EASEMENT FOR PUBLIC UTILITIES, GRANTED TO SOUTHERN CALIFORNIA Edison COMPANY, A CORPORATION, BY INSTRUMENT NO. 1894, BOOK 1924, PAGE 264, OF OFFICIAL RECORDS, (P/R #11).
- (S) EASEMENT FOR PUBLIC UTILITIES, GRANTED TO SOUTHERN CALIFORNIA Edison COMPANY, A CORPORATION, BY INSTRUMENT NO. 1894, BOOK 1924, PAGE 264, OF OFFICIAL RECORDS, (P/R #11).
- (T) EASEMENT FOR PUBLIC UTILITIES, GRANTED TO SOUTHERN CALIFORNIA Edison COMPANY, A CORPORATION, BY INSTRUMENT NO. 1894, BOOK 1924, PAGE 264, OF OFFICIAL RECORDS, (P/R #11).
- (U) EASEMENT FOR PUBLIC UTILITIES, GRANTED TO SOUTHERN CALIFORNIA Edison COMPANY, A CORPORATION, BY INSTRUMENT NO. 1894, BOOK 1924, PAGE 264, OF OFFICIAL RECORDS, (P/R #11).
- (V) EASEMENT FOR PUBLIC UTILITIES, GRANTED TO SOUTHERN CALIFORNIA Edison COMPANY, A CORPORATION, BY INSTRUMENT NO. 1894, BOOK 1924, PAGE 264, OF OFFICIAL RECORDS, (P/R #11).

PROJECT SITE DATA:
 TOTAL AREA OF PARCELS: 2053.5 ACRES
 STREET ADDRESS: 100-999 NORTH DOS PUEBLOS CANYON ROAD
 ASSESSOR'S PARCEL NUMBER: LOT A: A PORTION OF APN 079-060-066; AND ALL OF LOT B: A PORTION OF 079-060-066; LOT C: A PORTION OF 079-060-066; LOT D: A PORTION OF 079-060-066; LOT E: A PORTION OF 079-060-066; LOT F: A PORTION OF 079-060-066; LOT G: A PORTION OF 079-060-066; LOT H: A PORTION OF 079-060-066; LOT I: A PORTION OF 079-060-066; LOT J: A PORTION OF 079-060-066; LOT K: A PORTION OF 079-060-066; LOT L: A PORTION OF 079-060-066; LOT M: A PORTION OF 079-060-066; LOT N: A PORTION OF 079-060-066; LOT O: A PORTION OF 079-060-066; LOT P: A PORTION OF 079-060-066; LOT Q: A PORTION OF 079-060-066; LOT R: A PORTION OF 079-060-066; LOT S: A PORTION OF 079-060-066; LOT T: A PORTION OF 079-060-066; LOT U: A PORTION OF 079-060-066; LOT V: A PORTION OF 079-060-066.
 ZONING DESIGNATION: AG-100, AGRICULTURE, 100 ACRE MINIMUM
 GENERAL PLAN DESIGNATION: AGRICULTURE
 PROPOSED LOT SIZE: 1983.5 ACRES
 LOT NUMBER: 2
 LOT AREA (ACRES): 1983.5
 EXISTING/PROPOSED LOT SIZE: 1983.5 ACRES
 WATER - PRIVATE WATER DISTRICT
 SEWER - PRIVATE INDIVIDUAL SYSTEMS
 ELECTRIC - EDISON COMPANY
 GAS - GAS COMPANY



09-28-01 / 7pm 4p 10j