

# Diamond Rock Santa Barbara County Board of Supervisors Presentation

Cherisse Troesh, Troesh Materials Inc.  
John A. Hecht, P.E., West Coast Environmental and Engineering

Troesh Materials, Inc.  
September 23, 2008



# ***Presentation Overview***

- **Project Changes to Address Community and Regulatory Agency Concerns**
- **The Need for the Project**
- **Local Aggregate Demand**
- **Project Development and Permitting Process**
- **Environmental Issues**
- **Conclusion**





# ***Troesh Materials, Inc.***

Troesh Materials, Inc. is a long-time, locally owned and operated family business specializing in processing concrete ready mix needed to maintain and improve local infrastructure.



# *Project Changes to Address Community Concerns*

- **Public Outreach, Concessions, Project Reductions and Project Delay**
  - County Re-circulated 2<sup>nd</sup> Draft EIR to include additional studies (two year delay)
  - One year of monthly community outreach and public meetings in Cuyama
  - Outreach to SCV beginning after first PC hearing in May 2007
  - Reduce Project traffic and production volume by 20%
  - Remove entire Ventura County market from Project
  - Apply the more restrictive Ventura County air basin standards
  - Costly negotiations with Stop the Trucks Coalition



# *Sand and Gravel: Essential to our Daily Lives*

- "Sand and gravel is the most important mineral commodity produced in California, not only because of value, but because it is essential to the maintenance of our societal infrastructure."

*David Beeby, Senior Analyst, California Department of Conservation*





# Santa Barbara County Aggregate Supply & Demand



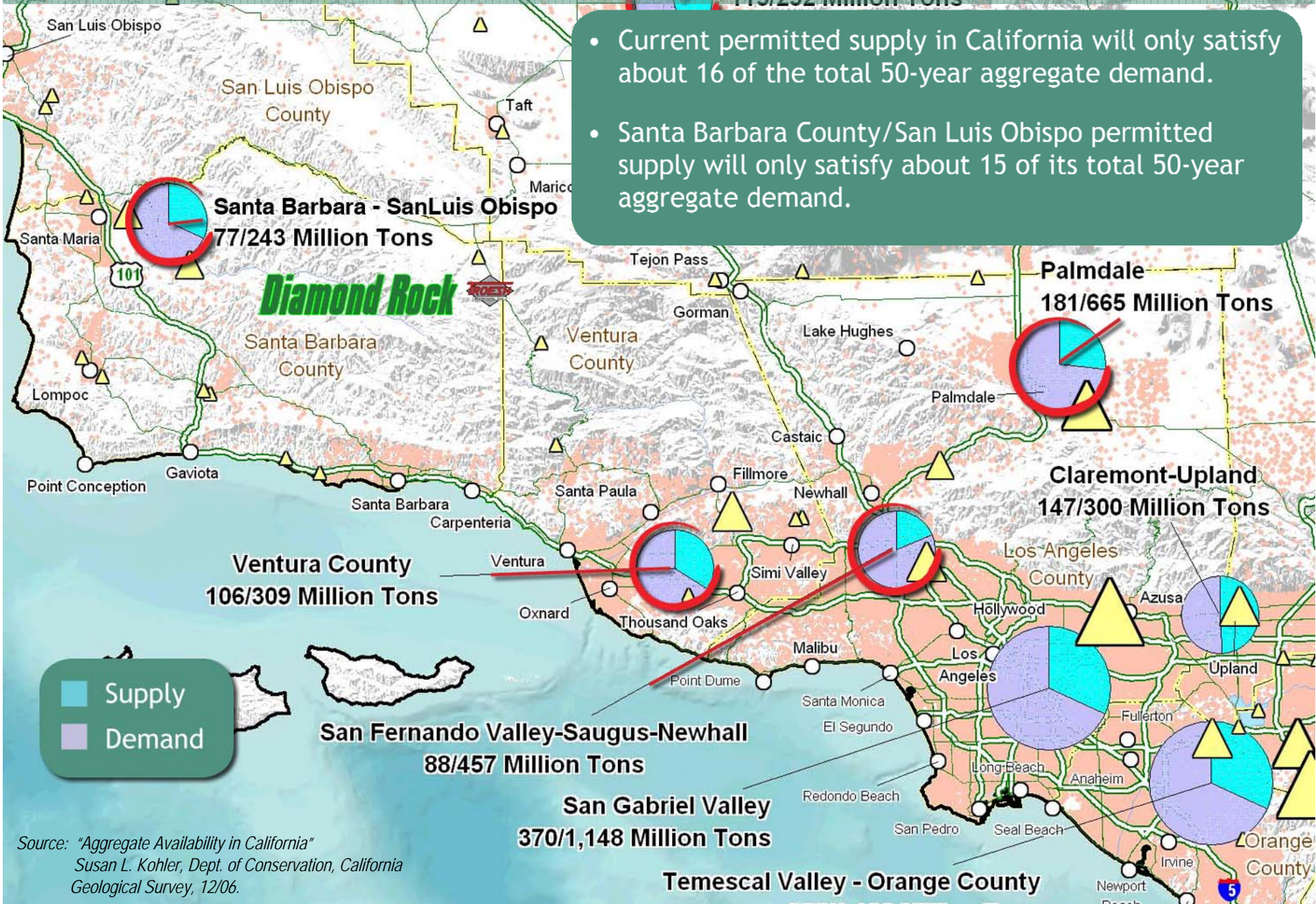
Carpenteria



Source: "Aggregate Availability in California"  
Susan L. Kohler, Dept. of Conservation, California  
Geological Survey, 12/06.



# CA 50-Year Projected Aggregate Demand



- Current permitted supply in California will only satisfy about 16 of the total 50-year aggregate demand.
- Santa Barbara County/San Luis Obispo permitted supply will only satisfy about 15 of its total 50-year aggregate demand.

Source: "Aggregate Availability in California"  
 Susan L. Kohler, Dept. of Conservation, California  
 Geological Survey, 12/06.



# Central Coast Aggregate Alternatives





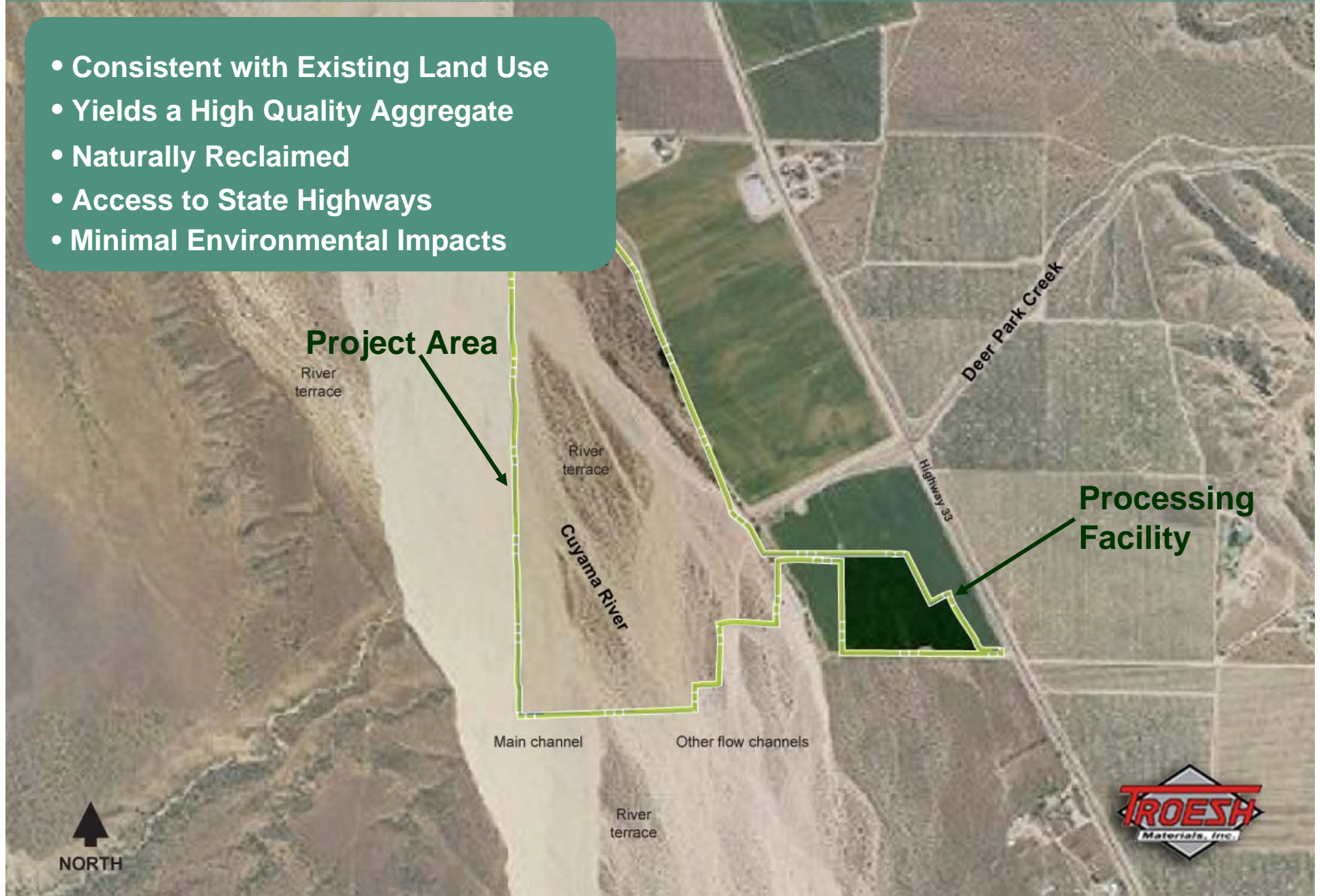
# *The Mitigated Project is the Superior Alternative*

- EIR evaluated seven alternatives
- The proposed project is correctly identified as the preferred alternative because:
  - The other alternatives result in less aggregate supply yet would not substantially reduce any Class I or II impacts
  - The need for aggregate has been demonstrated by the Department of Conservation and CalTrans
  - Substantially reducing the size and scale of the project impacts the projects economic feasibility



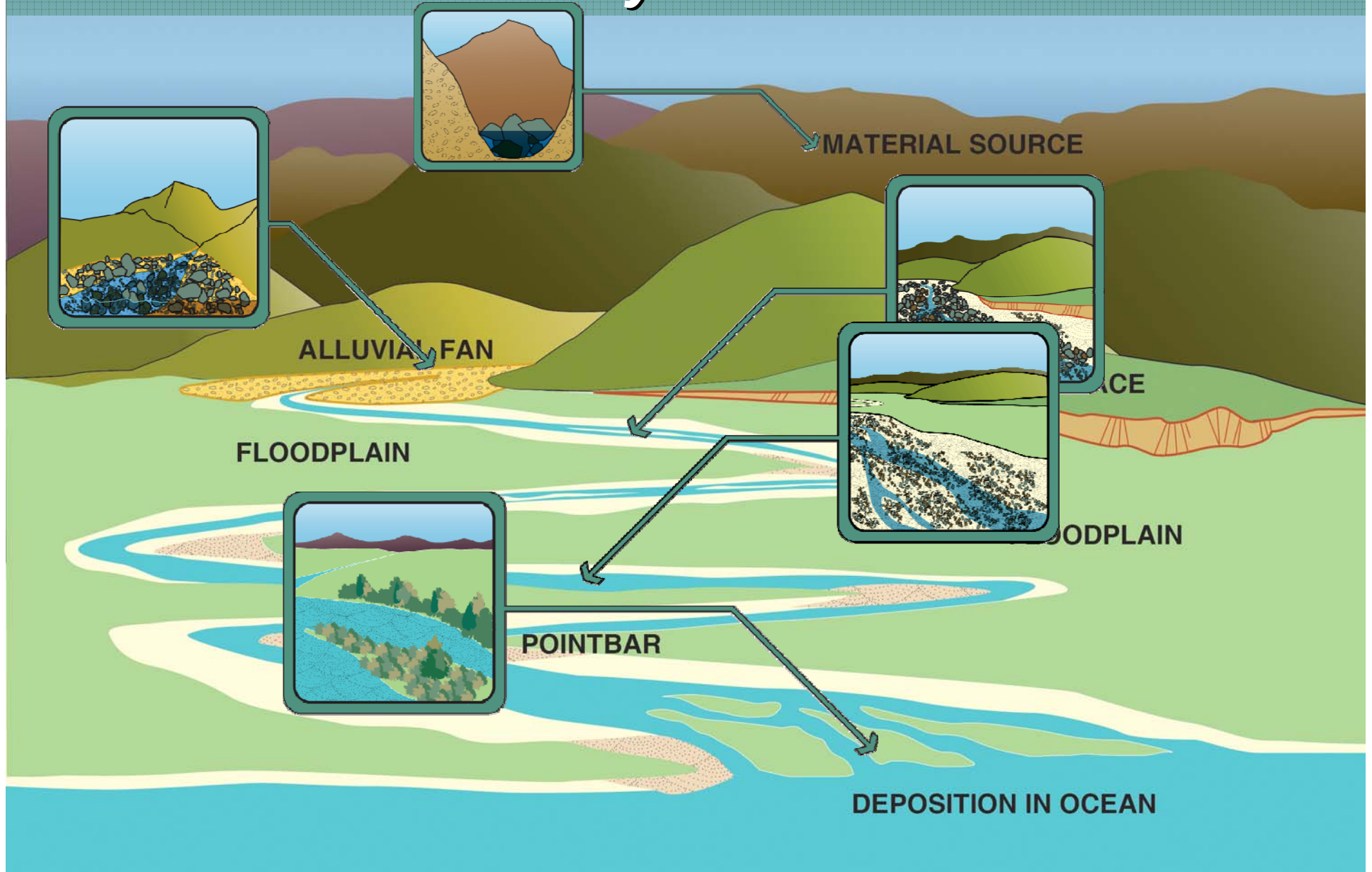
# Why Diamond Rock Works Best

- Consistent with Existing Land Use
- Yields a High Quality Aggregate
- Naturally Reclaimed
- Access to State Highways
- Minimal Environmental Impacts

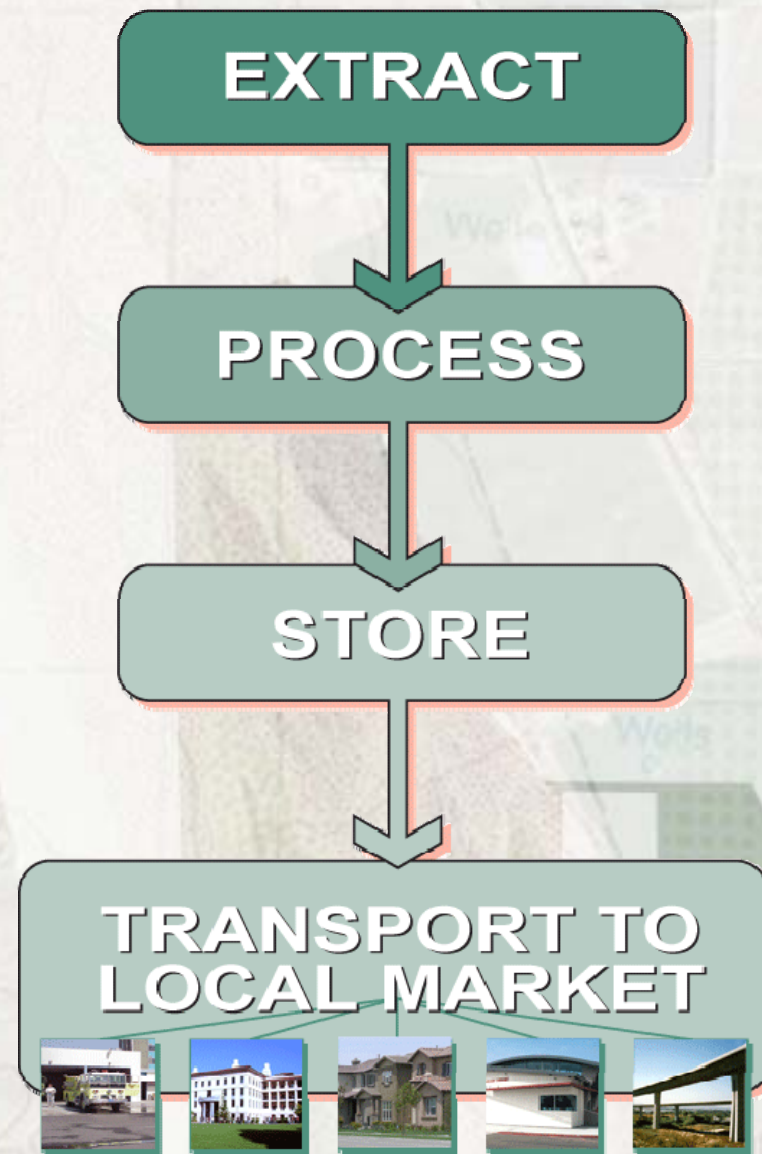




# *Material Source - Cuyama Riverbed Naturally Reclaimed*



# Aggregate Production Overview





# *Economic Benefits*

- If Diamond Rock is not permitted there will be two price impacts: increased shipping costs and supply shortage.
- With a total Cuyama Valley labor workforce of 327 persons, Diamond Rock will provide eight on-site family wage jobs plus ancillary transport jobs, with an estimated annual wage bill of approximately \$1,500,000.00.
- The direct wage impact of Diamond Rock will be 10.6% of the Cuyama Valley total income. This is a substantial financial benefit relative to the size of the New Cuyama economy.
- Diamond Rock will yield \$353,576 in sales tax revenues per year of which \$68,434 will be local sales tax revenues that remain in Santa Barbara County.





# Community Outreach

- May 2005 – May 2006 Troesh hosts monthly community-wide meetings
- More than 70 neighbors attended meetings
- Provided opportunity to listen to concerns and provide information

**MEET THE TROESH'S**

**AN INTRODUCTION TO  
DIAMOND ROCK**

**FOOD & DRINK  
PROVIDED!!**

Date: Wednesday  
May 25, 2005  
Time: 7:00 PM  
Place: Cuyama Recreation Hall

**TROESH**  
READY MIX, INC.

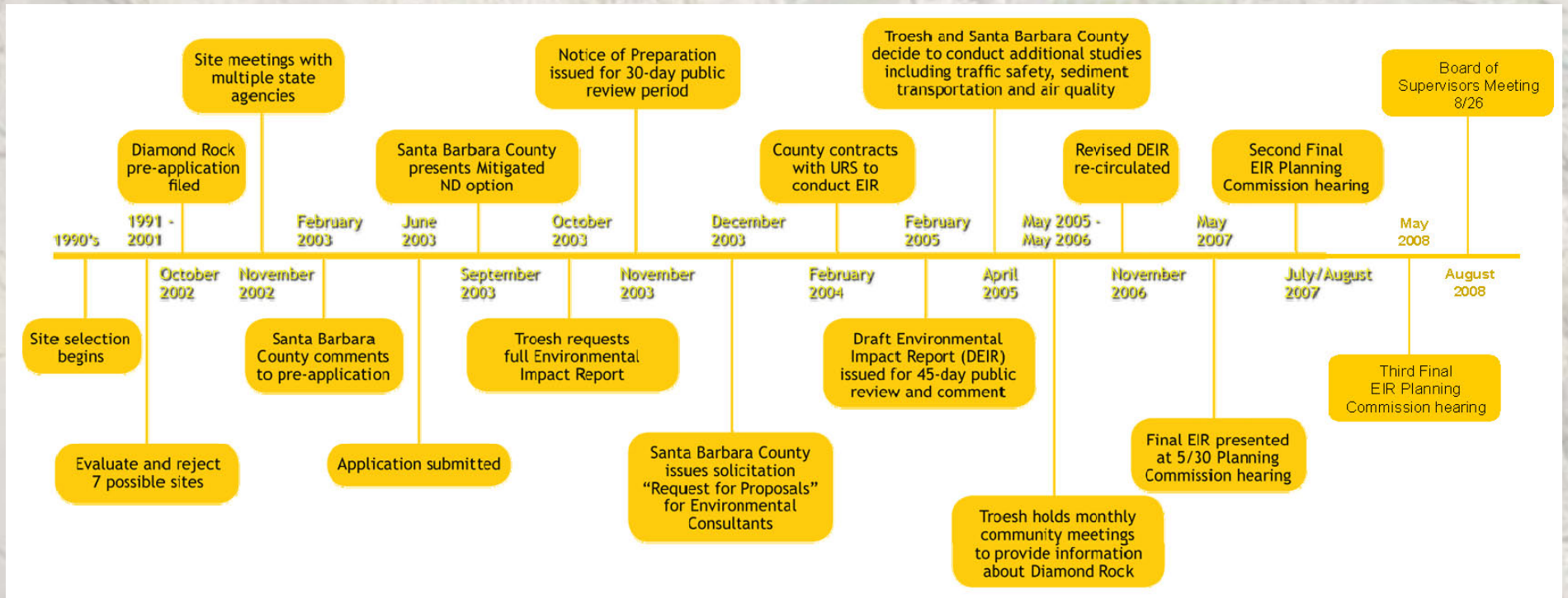
FOR ANY QUESTIONS CONTACT:  
CHERISSE TROESH  
(805) 357-2257

THE TROESH'S WOULD LIKE TO TAKE THIS OPPORTUNITY TO INTRODUCE OUR FAMILY AND ORGANIZATION.

WE ARE HOSTING AN OPEN FORUM OF QUESTIONS & ANSWERS REGARDING OUR PROPOSED PROJECT AND ESTABLISHING OUR COMMITMENT TO PARTNERING WITH THE COMMUNITY.



# Permit and Project Development Process





# Agency Oversight Team

## ■ County of Santa Barbara

- Planning and Development
- URS - EIR Consultant
- Public Works, APCD, Environmental Health, Fire Department, Agricultural Commission

## ■ State of California

- Department of Conservation
- Department of Fish and Game
- Regional Water Quality Control Board

## ■ Federal Government

- US Corps of Engineers
- US Fish and Wildlife Service
- Environmental Protection Agency





# *Project Changes to Address Regulatory Agency Concerns*

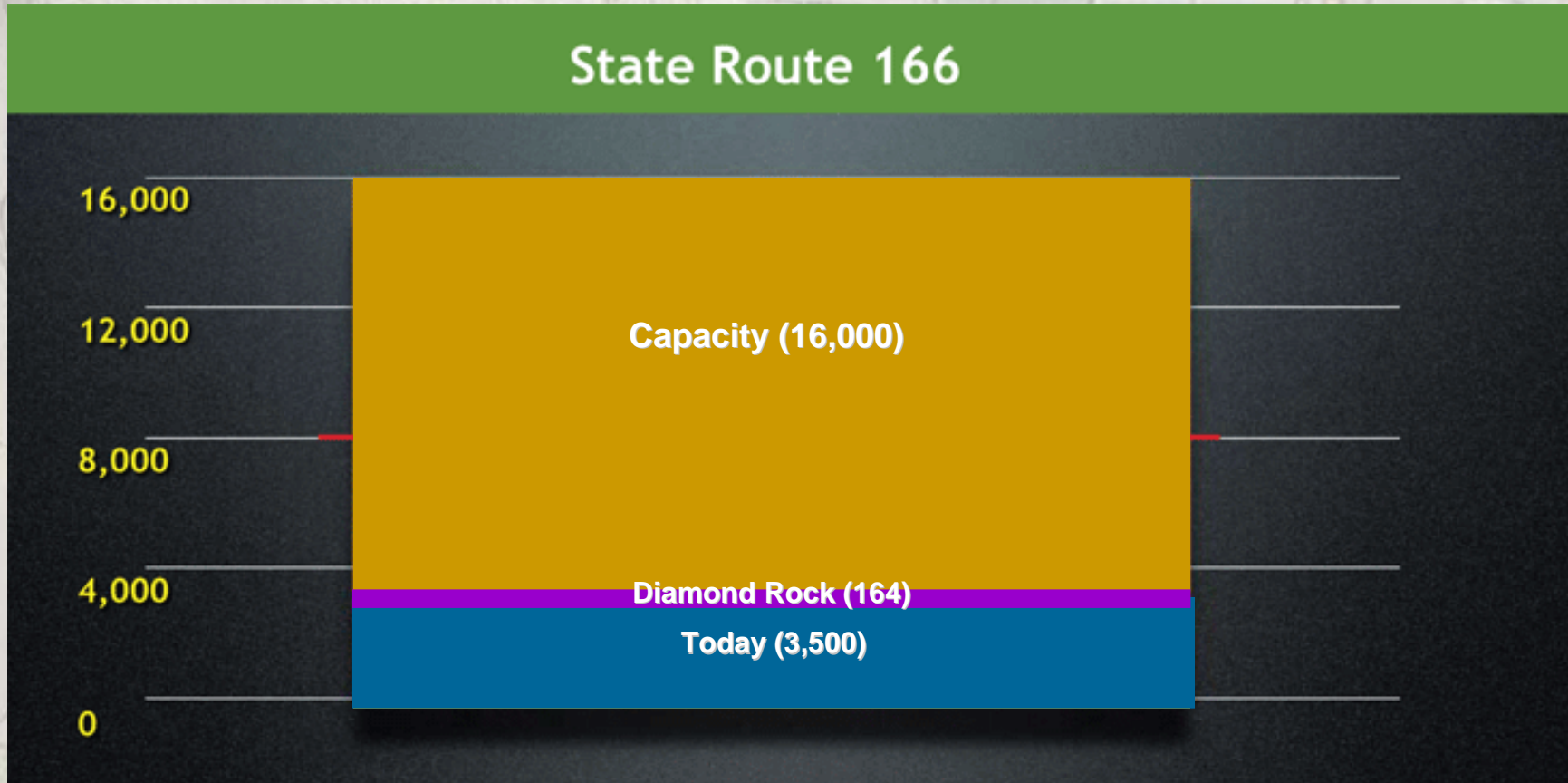
## ■ Costly Mitigations

- Restoration of the riverbank to remove junk cars and return area to a natural state (BI-01)
- Ongoing River survey and data collection requirements (W-2)
- Deer Park Creek Grade Control Structure – design, permitting, construction (W-4)
- Equipment upgrades for air quality, this could add \$100,000 or more (AQ-4)
- Berms and landscaping along Hwy 33 for visual improvement (VIS-1,2)
- Noise barriers for adjacent receptors (NS-1)



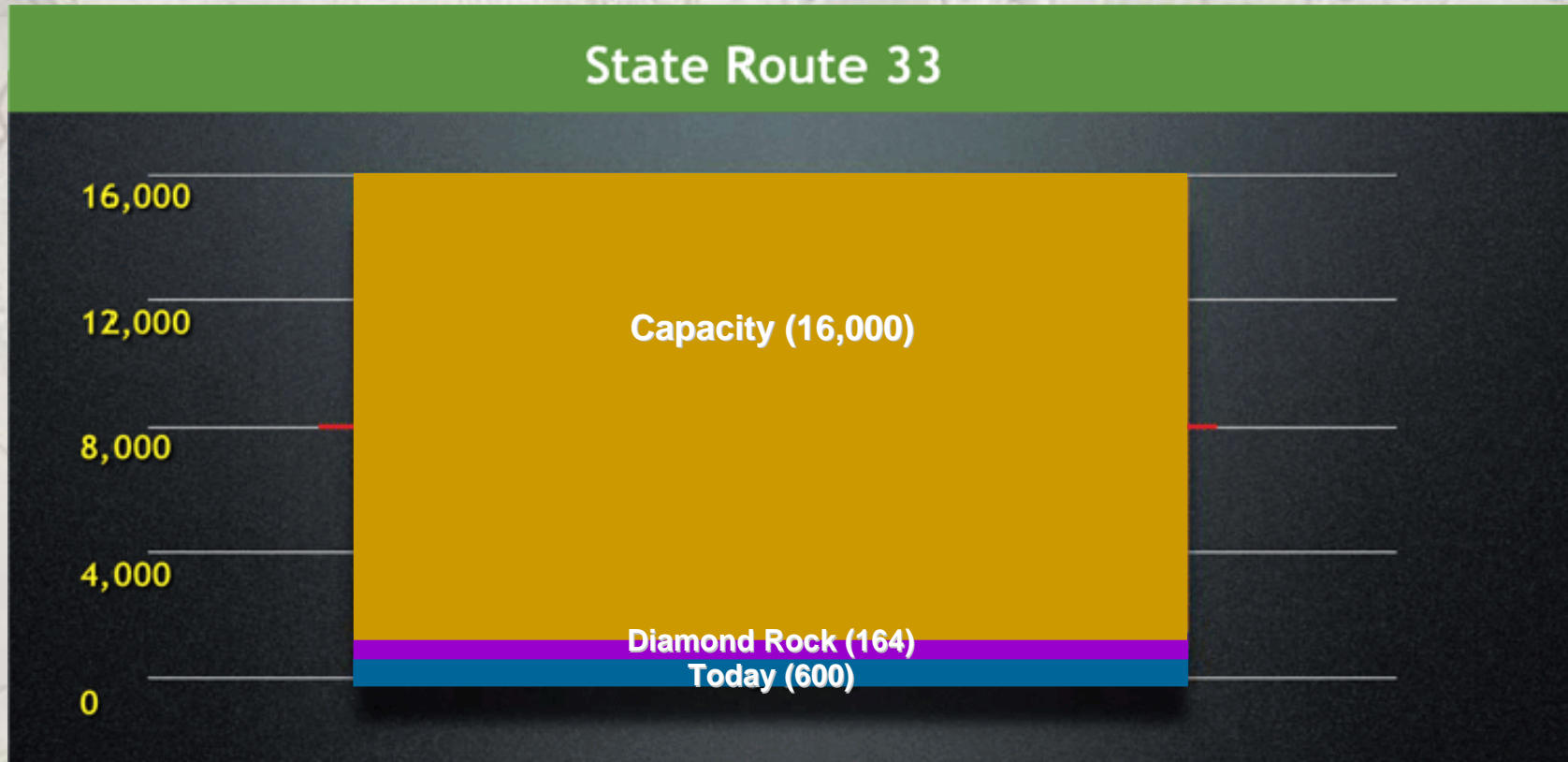
# Traffic

## State Route 166



# Traffic

## State Route 33



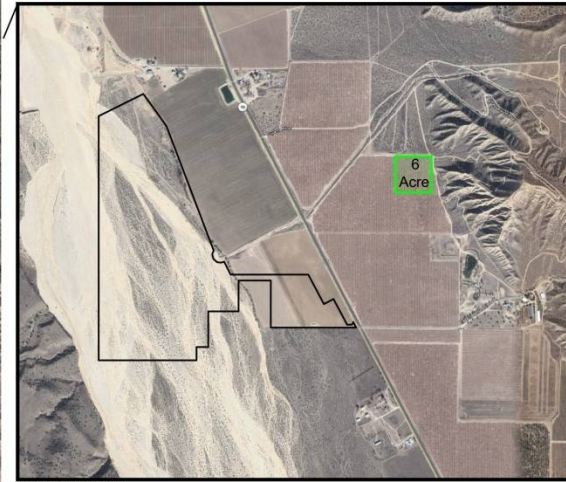


# Relative Project Water Use



Source: Google Earth Pro, 2008  
0 15,000 30,000  
Scale in Feet

Site Map  
Scale 1:15,000



Source: Google Earth Pro, 2008

Peak Year Project water use equates to approx. 6 acres of irrigated Alfalfa as shown in the green square.





# Conclusion

- Troesh and the County have changed the project significantly to address community concerns.
- Santa Barbara desperately needs aggregate to maintain and build infrastructure.
- There are not enough permitted aggregate resources in the County to meet future demand.
- Diamond Rock has mitigated all environmental impacts to the greatest extent feasible.
- Diamond Rock will provide millions in economic benefits to Santa Barbara County and the local economy.
- Diamond Rock will strengthen the County's economic base by maintaining a local source of construction grade aggregate to help meet the demand for current and projected growth.
- SCV Appeal questions have been answered.





# Diamond Rock Santa Barbara County Board of Supervisors Presentation

Troesh Materials, Inc.  
September 23, 2008

