



Draft Gaviota Coast Plan Initiation for Environmental Review

COUNTY OF SANTA BARBARA
BOARD OF SUPERVISORS
DECEMBER 3, 2013

Initiation Process

- Initiation of Draft Plan as the Project Description for Environmental Review
- Adoption Phase after Environmental review

Background

- 1999-Early 2000's - National Seashore Study & local community planning efforts
- October 20, 2009 - The Board of Supervisors established the Plan boundaries and appointed the GavPAC

Public Process

- 2009-2013 - The GavPAC hosted 68 noticed public meetings, one all day workshop, and 56 GavPAC subcommittee meetings
- 03/27/13 - The GavPAC recommended the Draft Gaviota Coast Plan for review by the Commission
- June-Sept. 2013 - The Planning Commission held 9 public hearings



**Long Range Planning Division
PLANNING AND DEVELOPMENT**



Gaviota Coast Plan: Key Provisions

1. Agriculture
2. Land Use
3. Visual Resources
4. Parks, Recreation, and Trails

Key Provisions: Agriculture

Proposed Agricultural Tiered Permit Structure

Reduced permit requirement for agriculturally-related uses at a small scale:

- a) The on-site processing of agricultural products
- b) Small-scale guest ranch



Key Provisions: Land Use

1. Rezone all Ordinance 661 parcels to Agriculture II
2. Designate all forest service lands Mountainous Area
3. Rezone State Park lands to Recreation
4. Rezone Arroyo Hondo Preserve to Resources Management



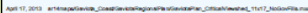
Key Provisions: Land Use

5. Plan goals can be enhanced through incentives
 - a) Future development of a broad incentive program
 - b) Phase I incentives program adopted with Plan

Key Provisions: Visual Resources

1. A new Critical Viewshed Corridor Overlay
2. Overlay provides enhanced viewshed protection

Long Range Planning Division
PLANNING AND DEVELOPMENT



Key Provisions: Parks, Recreation, and Trails

1. The proposed Parks, Recreation and Trails Element (PRT) of the Plan provides:
 - a) A new set of Parks, Recreation, and Trails maps,
 - b) General trail siting principles and,
 - c) Trail alignment narratives regarding proposed trail alignments



Key Provisions: Parks, Recreation, and Trails

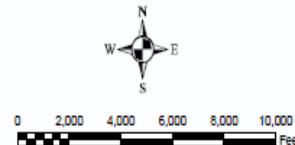
2. The Plan also designates the general location of the proposed California Coastal Trail
3. This designation enhances conformity with the Coastal Act

**Long Range Planning Division
PLANNING AND DEVELOPMENT**



Proposed Trails:

- ===== Existing Trail Easement
-  Existing Beach Access (Adopted by Coastal Plan)
-  Proposed Beach Access (Adopted by Coastal Plan)
-  Gaviota Coast Plan Boundary
-  Coastal Zone Boundary
-  Los Padres National Forest Boundary
-  Federal Land
-  State Parks and Beaches
-  County-Owned Land
-  Land Trust for Santa Barbara County Ownership
-  City of Goleta



For more detail along the coast, see the Coastal Segment maps.

Trails Map – Central Panel

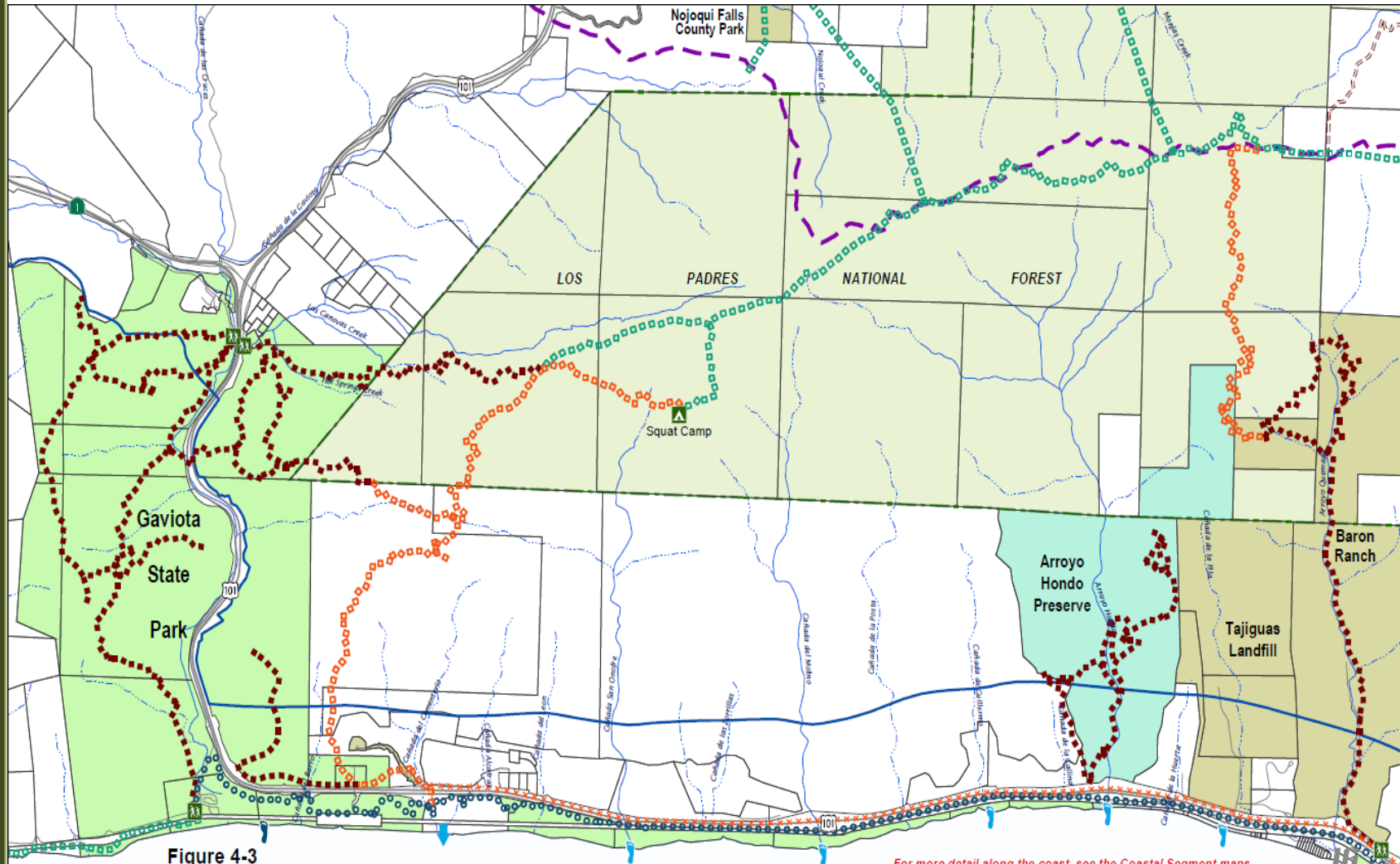


Figure 4-3

Gaviota Coast Plan - Proposed PRT - Central Panel

Proposed Trails:

- Proposed Trail on Existing PRT Map to be Retained
- Coastal Trail - Primary Route
- Primary Route
- Alternate Alignment
- Existing Trail



Proposed Trailhead



Proposed Beach Access



Existing Beach Access (Adopted by Coastal Plan)



Proposed Beach Access (Adopted by Coastal Plan)

Existing Trail Easement

Gaviota Coast Plan Boundary

Coastal Zone Boundary

Los Padres National Forest Boundary

Federal Land

State Parks and Beaches

County-Owned Land

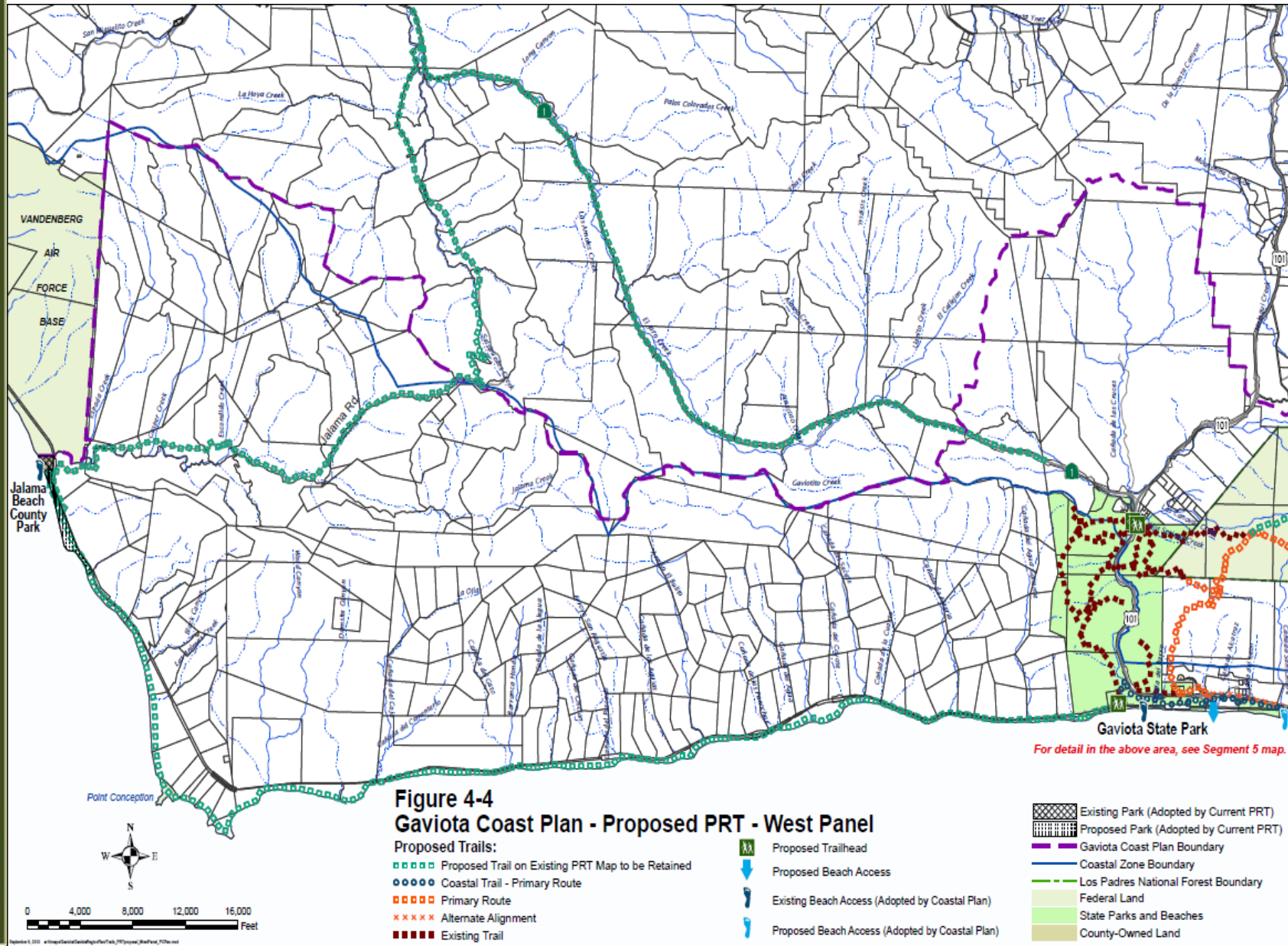
Land Trust for Santa Barbara County Ownership

For more detail along the coast, see the Coastal Segment maps.



0 2,000 4,000 6,000
Feet

Long Range Planning Division
PLANNING AND DEVELOPMENT



Staff Recommended Revisions

Visual Resources (p. 6-12)

DevStd VIS-2: Roadway Alignment and Siting~~Fire Department Standards. The County shall work with the Santa Barbara County Fire Department to consider revised standards~~
When reviewing the alignment and siting of proposed new roads and driveways serving residential development, Planning & Development shall evaluate methods to minimize excessive road/driveway construction and reduce or redesign fuel management zone buffers to minimize the removal of natural vegetation and related visual impacts, while ensuring projects meet the Santa Barbara County Fire Department's Private Road and Driveway Standards.



Staff Recommended Revisions

Transportation, Energy, and Infrastructure (p. 7-26)

Action TEI-4: ~~Santa Barbara County Fire Department's~~ Minimize Private Road and Driveway Standards Impacts. Planning & Development shall consider the following methods to reduce impacts associated with new roads and driveways serving residential development while ensuring development adheres to the development standards as set forth in the Santa Barbara County Fire Department's Private Road and Driveway Standards. ~~The County should include the following standards into the Santa Barbara County Fire Department's Private Road and Driveway Standards:~~

4. New roads ~~across~~ shall not be placed on slopes of 30 percent or greater ~~shall not be allowed~~ unless:



Staff Recommended Revisions

Transportation, Energy, and Infrastructure (p. 7-28)

Policy TEI-14: Fire Protection Service. The community should work to maintain a productive relationship with the County Fire Department ~~to retain Fire Station No. 18 as an active and vital public service serving the Gaviota Coast residents, visitors, and tourists. The community should work with the County Fire Department to investigate the feasibility of constructing an additional Fire Station west of Winchester Canyon and/or developing rural volunteer fire brigade(s).~~ and the US Forest Service to assure effective emergency service.

Recommendation

That the County Board of Supervisors:

Either,

1. Adopt a Resolution to initiate the Draft Gaviota Coast Plan as the project description for environmental review under the California Environmental Quality Act (CEQA);

Or,

2. Initiate, by Board of Supervisors Minute Order, the Draft Gaviota Coast Plan as the project description for environmental review under the California Environmental Quality Act (CEQA)

