



BOARD OF SUPERVISORS  
AGENDA LETTER

Agenda Number:

A-29

Clerk of the Board of Supervisors  
105 E. Anapamu Street, Suite 407  
Santa Barbara, CA 93101  
(805) 568-2240

Department Name: CEO  
Department No.: 012  
For Agenda Of: 7/17/07  
Placement: Administrative  
Estimated Tme:  
Continued Item: No  
If Yes, date from:  
Vote Required: Majority

07-00744  
RECEIVED  
AGENDA LETTERS  
JUL 17 2007  
COUNTY OF SANTA BARBARA

ADDENDUM

**TO:** Board of Supervisors

**FROM:** Department Michael F. Brown, County Executive Officer  
Director(s)  
Contact Info: Jason Stilwell, Assistant County Executive Officer, 568.3400

**SUBJECT:** Formation of Assessment District for Carpinteria Sanitary District, 1<sup>st</sup> District

**County Counsel Concurrence**

As to form: Yes

**Auditor-Controller Concurrence**

As to form: N/A

**Other Concurrence:** N/A

As to form: Select    Concurrence

**Recommended Actions:**

Adopt a Resolution of Intent and Boundary Map for the Carpinteria Sanitary District's Assessment District No. 2007-1 for septic to sewer conversion projects in the First District.

**Summary Text:**

The Board of Supervisors received a request from the Carpinteria Sanitary District (attached) requesting the County's formal consent of a proposal to form an assessment district within the Carpinteria Sanitary District for septic to sewer conversion projects located within the Rincon Point, Sandyland Cove, Sand Point Road and Padaro Lane communities. Per Section 10104 of the Streets and Highways Code, before the Sanitary District is able to adopt its resolution of intent to form the assessment district, the resolution of intent and accompanying boundary map shall be submitted to the Board for approval.

**Background:**

This item is on the Board's agenda in order to consent to proceedings to be undertaken by the Carpinteria Sanitary District to form an assessment district. The Carpinteria Sanitary District may not provide services within the County's geographical jurisdiction unless the Board of Supervisors has consented. Upon the approval of Santa Barbara and Ventura counties, the item may go before the Local Agency Formation Commission in August.

The assessment district, should it be established, would finance certain acquisitions and improvements related to the construction of sanitary sewer systems to serve existing homes and undeveloped parcels within specified areas of the Carpinteria Sanitary District. Specifically, these sewer projects include:

- 72 existing homes and one undeveloped parcel within the Rincon Point community;
- 38 existing homes and one undeveloped parcel within the Sandyland Cove community;
- 20 existing homes and one undeveloped parcel within the Sand Point community; and
- 11 residential parcels on Padaro Lane.

A complete description of the projects is provided in Exhibit A of the attached Resolution of Intention to Make Acquisitions and Improvements provided by the Carpinteria Sanitary District.

**Fiscal and Facilities Impacts:**

Budgeted: No. There are no direct impacts to the County’s facilities or finances. The existing homes are currently using septic systems that store sewage in large tanks and require periodic maintenance and emptying. If the tanks are not emptied and become flooded in heavy rains, the runoff will seep into the ocean and affect water quality.

**Fiscal Analysis:**

Narrative: There are no direct fiscal impacts to the County of consenting to the formation of the assessment district. However, the individual homeowners would be responsible for any assessments if an assessment district is formed.

**Staffing Impacts:**

**Legal Positions:**  
N/A

**FTEs:**  
N/A

**Special Instructions:**

Direct the Clerk of the Board to send a certified minute order and resolution to Bob Braitman, Executive Director of LAFCO and Craig Murray, General Manager of the Carpinteria Sanitary District.

**Attachments:**

1. County of Santa Barbara Resolution of Intent and Boundary Map for the Carpinteria Sanitary District’s Assessment District 2007-1
2. Letter from the Carpinteria Sanitary District Dated June 12, 2007 with Attachments
3. Resolution No. R-190, A Resolution Requesting Approval by the County of Santa Barbara of Proposed Resolution of Intention and Boundary Map under Section 10104 of the Streets and Highways Code of California

**Authored by:**

Sharon Friedrichsen, County Executive Office, 568.3400

**cc:** Michael Ledbetter, County Counsel  
Jason Stilwell, County Executive Office

RESOLUTION OF THE BOARD OF SUPERVISORS  
OF THE COUNTY OF SANTA BARBARA, STATE OF CALIFORNIA

IN THE MATTER OF THE RESOLUTION	)	RESOLUTION
OF INTENTION AND BOUNDARY MAP	)	
UNDER SECTION 10104 OF THE STREETS	)	NO. _____
& HIGHWAYS CODE OF CALIFORNIA	)	
IN AND FOR THE CARPINTERIA )	)	
SANITARY DISTRICT'S ASSESSMENT	)	
DISTRICT NO. 2007-1	)	

**WHEREAS**, the Carpinteria Sanitary District (the "District"), a sanitary district duly organized and operating in the County, is beginning special assessment proceedings under the Municipal Improvement Act of 1913, being Division 12 of the Streets and Highways Code of California (the "Act") in and for the District's Assessment District No. 2007-1 (the "Assessment District") for the construction and acquisition of certain sanitary sewage collection and transmission improvements;

**WHEREAS**, under Section 10104 of the Act, the District must obtain certain approvals from this Board of Supervisors as a condition of undertaking proceedings for the Assessment District;

**WHEREAS**, the secretary of the District has filed with the Clerk of this Board of Supervisors a certified copy of a resolution of the Board of Directors of the District requesting the Board of Supervisors to approve the proposed Resolution of Intention and Boundary Map to be used by the District in its proceeding for the Assessment District, together with copies of the proposed Resolution of Intention and Boundary Map; and

**WHEREAS**, the public interest, convenience and necessity will be served by the conduct of proceedings for the Assessment District by the District for the sanitary sewage improvements;

**NOW, THEREFORE, BE IT RESOLVED** that the Board of Supervisors of the County of Santa Barbara approves and adopts as follows:

1. The forms of proposed Resolution of Intention and Boundary Map for the Assessment District submitted by the District to this Board of Supervisors are hereby approved.
2. The approvals granted herein shall not subject this County to any liability for the costs of the proposed acquisitions and improvements, the assessments to be levied on the property within the Assessment District, nor any of the bonds or other evidences of indebtedness to be issued by the District for the Assessment District.
3. The Clerk of this Board is directed to file a certified copy of this Resolution with the Secretary of the District as soon as possible.

**PASSED AND ADOPTED** by the Board of Supervisors of the County of Santa Barbara, State of California, this 17<sup>th</sup> day of July 2007, by the following vote:

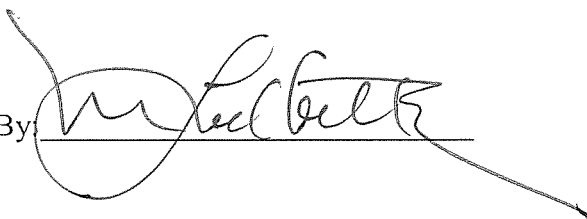
AYES:  
NOS:  
ABSTAIN:  
ABSENT:

\_\_\_\_\_  
Brook Firestone, Chair  
Board of Supervisors  
County of Santa Barbara


ATTEST:  
CLERK OF THE BOARD

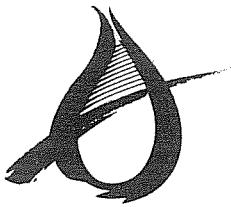
By: \_\_\_\_\_  
Deputy Clerk

APPROVED AS TO FORM:  
COUNTY COUNSEL

By:  \_\_\_\_\_

APPROVED AS TO FORM:  
AUDITOR-CONTROLLER

By:  \_\_\_\_\_



# Carpinteria Sanitary District

5300 Sixth Street, Carpinteria, CA 93013

(805) 684-7214 • Admin Fax (805) 684-7213 • Plant Fax (805) 566-6599

June 12, 2007

Supervisor Salud Carbajal  
First District Supervisor  
105 E. Anapamu Street  
Santa Barbara, CA 93101

**Re: RESOLUTION OF CONSENT TO FORM ASSESSMENT DISTRICT  
South Coast Beach Communities Septic to Sewer Project**

Dear Supervisor Carbajal:

Thank you in advance for your assistance in carrying the subject item to the Santa Barbara County Board of Supervisors on behalf of the Carpinteria Sanitary District (District). The District is in the process of forming an assessment district (2007-01) to provide homeowners within the Rincon Point, Sandyland Cove, Sand Point Road and Padaro Lane communities with a long term financing mechanism to fund septic to sewer conversion projects.

Section 10104 of the Municipal Improvement Act of 1913 requires formal consent of the city or county in which a proposed assessment district is to be formed. In this case, the Santa Barbara County Board of Supervisors must pass a resolution evidencing its consent before the Sanitary District can adopt a Resolution of Intention to form the assessment district.

Attached herewith is the Draft Resolution of Intention that the District intends to adopt to initiate the formation proceedings. A detailed description of the project is provided in Attachment A to this resolution.

Boundary maps, which clearly delineate the proposed assessment district boundaries, are also attached herewith. It should be noted that a portion of the Rincon Point community is located within Ventura County and the District is also seeking consent to form the assessment district from the Ventura County Board of Supervisors.

Finally, we have also provided a proposed form of Resolution Granting Consent that the County may utilize at its discretion. This form was drafted by the District's bond counsel and it meets the statutory requirements of Section 10104.

RECEIVED

JUN 12 2007

District

Thank you very much for your continued support of this critical project. Your assistance in gaining consent and passing the required resolution as soon as possible is greatly appreciated. If there is anything I can do to facilitate the process, please let me know. You can always reach me at 684-7214 x12 or by email at [craigm@carpsan.com](mailto:craigm@carpsan.com).

Best regards,  
CARPINTERIA SANITARY DISTRICT



Craig M. Murray, P.E.  
General Manager

Enclosures: Draft Carpinteria Sanitary District Resolution of Intention  
Assessment District 2007-01 Boundary Maps  
Draft Form of Resolution of Consent

cc: Scott Ferguson, Jones Hall  
Anthony Trembley, Nordman, Cormany, Hair & Compton, LLP  
Adam Bauer, Fieldman Rolapp

[ D R A F T ]

RESOLUTION NO. \_\_\_\_\_

A RESOLUTION OF INTENTION  
TO MAKE ACQUISITIONS AND IMPROVEMENTS

CARPINTERIA SANITARY DISTRICT  
Assessment District No. 2007-1

WHEREAS, the Carpinteria Sanitary District (the "District"), Counties of Santa Barbara and Ventura, State of California, has commenced proceedings for the formation of an assessment district (the "Assessment District") in order to finance certain acquisitions and improvements described in Exhibit "A" attached hereto; and

WHEREAS, at the request of the District, Penfield & Smith Engineers prepared a map specifying the exterior boundaries of the assessment district (the "Map"); and

WHEREAS, the District has submitted a copy of the Map and this proposed Resolution of Intention to the Counties of Santa Barbara and Ventura for their respective approval as required under Streets and Highways Code §10104; and

WHEREAS, on \_\_\_\_\_, 2007, the County of Santa Barbara approved the Map and this proposed Resolution of Intention, and on \_\_\_\_\_, 2007, the County of Ventura approved the Map and this proposed Resolution of Intention;

THEREFORE BE IT RESOLVED by the Board of Directors (the "Board") of the Carpinteria Sanitary District, as follows:

1. **Intention.** The public interest, convenience and necessity require, and that it intends to order the making of the acquisitions and improvements described in Exhibit "A" attached hereto and made a part hereof in and for the proposed Assessment District, to be known as "Carpinteria Sanitary District Assessment District No. 2007-1."

2. **Law Applicable.** Except as herein otherwise provided for the issuance of bonds, all of the work shall be done as provided in the Municipal Improvement Act of 1913, Division 12 of the Streets and Highways Code of California (the "Act").

3. **Nature and Location of and Grades for Improvements.** All of the work and improvements are to be constructed at the places and in the particular locations, of the forms, sizes, dimensions and materials, and at the lines, grades and elevations, as shown and delineated upon the plans, profiles and specifications to be made therefor, as hereinafter provided. There is to be excepted from the work above described any of such work already done to line and grade and marked excepted or shown not to be done on the plans, profiles and specifications. Whenever any public way is herein referred to as running between two public ways, or from or to any public way, the intersections of the public ways referred to are included

to the extent that work is shown on the plans to be done therein. The streets and highways are or will be more particularly shown in the records in the offices of the Santa Barbara County Recorder and of the Ventura County Recorder, and shall be shown upon the plans.

4. **Change of Grade.** Notice is hereby given of the fact that in many cases the work and improvements will bring the finished work to a grade different from that formerly existing, and that to the extent the grades are hereby changed and that the work will be done to the changed grades.

5. **Work on Private Property.** In cases where there is any disparity in level or size between the improvements proposed to be made herein and private property and where it is more economical to eliminate such disparity by work on the private property than by adjustment of the work on public property, it is hereby determined that it is in the public interest and more economical to do such work on private property to eliminate such disparity. In such cases, the work on private property shall, with the written consent of the owner of the property, be done and the actual cost thereof may be added to the proposed assessment of the lot on which the work is to be done.

6. **Official Grades.** This Board does hereby adopt and establish as the official grades for the work the grades and elevations to be shown upon the plans, profiles and specifications. All such grades and elevations are to be in feet and decimals thereof with reference to the datum plane of this District.

7. **Descriptions - General.** The descriptions of the acquisitions and improvements and the termini of the work contained in this Resolution are general in nature. All items of work do not necessarily extend for the full length of the description thereof. The plans and profiles of the work and maps and descriptions as contained in the Engineer's Report, hereinafter directed to be made and filed, shall be controlling as to the correct and detailed description thereof.

8. **Special Benefit and Boundary Map.** The contemplated acquisitions and improvements, in the opinion of this Board, are of more than local or ordinary public benefit, and the costs and expenses thereof are made chargeable upon the Assessment District, the exterior boundaries of which are shown on a map thereof on file in the office of the District Secretary, to which reference is hereby made for further particulars. The map indicates by a boundary line the extent of the territory proposed to be included in Assessment District and shall govern for all details as to the extent of the Assessment District.

9. **Public Property.** This Board declares that all public streets, highways, lanes and alleys, and properties owned by any public agency or department of the United States of America, the State of California, the County of Santa Barbara, the County of Ventura, any city or special district, within the Assessment District and in use in the performance of a public function shall be omitted from the assessment hereafter to be made; provided, however, that the following lands shall not be omitted from the assessment: (a) lands owned by a public school or community college district; and (b) lands acquired by a public agency through the foreclosure or deed in lieu of such foreclosure of a purchase money mortgage, deed of trust or similar security interest in favor of the United States of America or the State of California or any department, agency or instrumentality thereof.



10. **Engineer's Report.** The acquisitions and improvements are hereby referred to Penfield & Smith Engineers, being a competent firm employed for the purpose hereof as the Engineer of Work for this Assessment District (the "Engineer of Work"), and the Engineer of Work is hereby directed to make and file with the District Secretary a report in writing (the "Engineer's Report"), presenting the following:

(a) Maps and descriptions of the lands and easements to be acquired, if any;

(b) Plans and specifications of the proposed improvements if the improvements are not already installed. The plans and specifications do not need to be detailed and are sufficient if they show or describe the general nature, location, and extent of the improvements. If the Assessment District is divided into zones, the plans and specifications shall indicate the class and the type of improvements to be provided for each zone. The plans or specifications may be prepared as separate documents, or either or both may be incorporated in the Engineer's Report as a combined document.

(c) A general description of works or appliances already installed and any other property necessary or convenient for the operation of the improvements, if the works, appliances, or property are to be acquired as part of the improvements.

(d) An estimate of the cost of the improvements and of the cost of lands, rights-of-way, easements, and incidental expenses in connection with the improvements, including any cost of issuing and registering bonds.

(e) A diagram showing, as they existed at the time of the passage of this Resolution, all of the following:

(1) The exterior boundaries of the Assessment District.

(2) The boundaries of any zones within the Assessment District.

(3) The lines and dimensions of each parcel of land within the Assessment District.

Each parcel shall be given a separate number upon the diagram, and each zone within the Assessment District shall be separately identified. The diagram may refer to the county assessor's maps for a detailed description of the lines and dimensions of any parcels, in which case those maps shall govern for all details concerning the lines and dimensions of the parcels.

(f) A proposed assessment of the total amount of the cost and expenses of the proposed improvement upon the several parcels of land in the Assessment District in proportion to the estimated benefits to be received by each parcel, respectively, from the improvement. The assessment shall refer to the parcels by their respective numbers as assigned pursuant to subparagraph (e) above. When any portion or percentage of the costs and expenses of the acquisitions and improvements is to be paid from sources other than assessments, the amount of such portion or percentage shall first be deducted

from the total estimated cost and expenses of the acquisitions and improvements, and the assessment shall include only the remainder of the estimated cost and expenses.

(g) A proposed maximum annual assessment upon each of the several parcels of land in the Assessment District to pay cost incurred by the District and not otherwise reimbursed resulting from the administration and collection of assessments or from administration or registration of any associated bonds and reserve or other related funds.

**11. Use of Surplus.** If any excess shall be realized from the assessment it shall be used, in such amounts as this Board may determine, in accordance with the provisions of the Act, for one or more of the following purposes:

(a) Transfer to the general fund of this District, provided that the amount of any such transfer shall not exceed the lesser of \$1,000 or 5% of the total amount expended from the improvement fund;

(b) As a credit upon the assessment and any supplemental assessment or for the redemption of bonds, or both; or

(c) For the maintenance of the improvements.

**12. Contact Person.** Craig Murray, General Manager, Carpinteria Sanitary District, is hereby designated as the person to answer inquiries regarding any protest proceedings to be had herein, and may be contacted during regular office hours at 5300 Sixth Street, Carpinteria, California, 93013, or by calling telephone number (805) 684-7214.

**13. Contracts with Others.** To the extent that any of the work, rights, improvements and acquisitions indicated in the Engineer's Report, to be made as provided herein, are shown to be connected to the facilities, works or systems of, or are to be owned, managed and controlled by, any public agency other than this District, or of any public utility, it is the intention of this Board to enter into an agreement with such public agency or public utility pursuant to Chapter 2 (commencing with Section 10100) of the Act, which agreement may provide for, among other matters, the ownership, operation and maintenance by such agency or utility of the works, rights, improvements and acquisitions, and may provide for the installation of all or a portion of such improvements by the agency or utility and for the providing of service to the properties in the area benefiting from the work, rights, improvements and acquisitions by such agency or utility in accordance with its rates, rules and regulations, and that such agreement shall become effective after proceedings have been taken for the levy of the assessments and sale of bonds and funds are available to carry out the terms of any such agreement.

**14. Improvement Bonds.** Notice is hereby given that serial and/or term improvement bonds to represent unpaid assessments, and bear interest at the rate of not to exceed such rate of interest as may be authorized by applicable law at the time of sale of such bonds, will be issued hereunder in the manner provided by the Improvement Bond Act of 1915, Division 10 of the California Streets and Highways Code (the "Bond Law"), the last installment of which bonds shall mature not to exceed 39 years from the second day of September next

succeeding twelve months from their date. The bonds shall be issued in such series and shall mature in such principal amounts at such times as shall be determined by this Board at the time of the issuance of such bonds. The provisions of Part 11.1 of the Bond Law, providing an alternative procedure for the advance payment and calling of bonds, shall apply to the bonds issued in these proceedings. It is the intention of this Board to create a special reserve fund pursuant to and as authorized by Part 16 of the Bond Law. It is the intention of the District that the District will not obligate itself to advance available funds from the treasury of the District to cure any deficiency in the redemption fund to be created with respect to the bonds; provided, however, that a determination not to obligate itself shall not prevent the District from, in its sole discretion, so advancing funds.

**15. Refunding of Bonds.** The bonds may be refunded pursuant to the provisions of Division 11.5 of the California Streets and Highways Code upon the determination of the Board of the District that the public interest or necessity requires such refunding. Such refunding may be undertaken by the Board when, in its opinion, lower prevailing interest rates may allow reduction in the amount of the installments of principal and interest upon the assessments given to owners of property assessed for the works herein described. The refunding bonds shall bear interest at a rate not to exceed that which is stated in the resolution of the Board expressing its intention to issue the refunding bonds, which resolution of intention shall also set forth the maximum term of years of the refunding bonds. The refunding shall be accomplished pursuant to Division 11.5 (commencing with Section 9500) of the California Streets and Highways Code, except that, if, following the filing of the report specified in Section 9523 and any subsequent modifications of the report, the Board finds that each of the conditions specified in the resolution of intention to issue the refunding bonds is satisfied and that adjustments to the assessments are on a pro-rata basis, the Board may approve and confirm the report and may, without further proceedings, authorize, issue and sell the refunding bonds pursuant to Chapter 3 (commencing with Section 9600) of Division 11.5 of the California Streets and Highways Code.

**16. Division 4.** Reference is hereby made to proceedings had pursuant to Division 4 of the Streets and Highways Code of California which are on file in the office of the District Secretary. It is the intention of this Board to comply with Division 4 of the Streets and Highways Code of California by proceeding under Part 7.5 thereof. To that end, the Engineer of Work is hereby directed to include in the Engineer's Report all of the material specified by such Part 7.5 and for which the total true value shall be estimated as the full cash value of the parcels of land in the Assessment District as shown on the last equalized assessment rolls of the County of Santa Barbara and the County of Ventura.

**17. No Private Contract.** Notice is hereby given that, in the opinion of this Board, the public interest will not be served by allowing the property owners to take the contract for the construction of the improvements and therefore that, pursuant to Section 20487 of the California Public Contract Code, no notice of award of contract shall be published.

**18. Reimbursement Declaration.** The District intends to issue the Bonds, which are "Obligations" under United States Income Tax Regulations section 1.150-2 (the "Regulations") The Board hereby declares that the District reasonably expects to use a portion of the proceeds of the Bonds for reimbursement of expenditures for the Improvements that are paid before the date of issuance of the Bonds. This section of this resolution shall be solely for the purpose of

complying with the provisions of the Regulations and shall not be deemed an approval of all or any part of the Assessment District or a commitment on the part of this Board to issue any or all of the Bonds or otherwise provide for financing.]

\*\*\*\*\*

I, the undersigned District Secretary of the Carpinteria Sanitary District, hereby certify that the foregoing is a full, true and correct copy of a resolution duly adopted by the Board of the District at a meeting thereof on the \_\_\_\_\_ day of \_\_\_\_\_, 2007, by the following vote of the members thereof:

AYES, and in favor thereof:

NOES:

ABSENT:

ABSTENTIONS:

\_\_\_\_\_  
Jeff Moorhouse, President  
Board of Directors

ATTEST:

\_\_\_\_\_  
Michael Damron, Secretary  
Board of Directors

APPROVED AS TO FORM:

ANTHONY TREMBLEY  
Nordman, Cormany, Hair & Compton

\_\_\_\_\_  
District Counsel

## EXHIBIT A

### CARPINTERIA SANITARY DISTRICT Assessment District No. 2007-1

#### DESCRIPTION OF WORK

Within the Carpinteria Sanitary District (the "District"), Counties of Santa Barbara and Ventura, State of California, the construction and acquisition of the following public improvements, including the acquisition of all lands, easements, rights-of-way, licenses, franchises, and permits and the construction of all auxiliary work necessary and/or convenient to the accomplishment thereof in accordance with plans and specifications to be approved by the Carpinteria Sanitary District:

- A. **Rincon Point Community Sewer System Improvements.** The work includes construction of a sanitary sewer system to serve 72 existing homes and one undeveloped parcel within the Rincon Point community. Improvements include grinder pump units located at each residence, approximately 3,900 linear feet of small diameter, low pressure force main pipe, a wastewater pump station and associated appurtenances, approximately 4,050 linear feet of 4-inch diameter force main pipe, approximately 2,300 linear feet of 8-inch or 10-inch diameter gravity sewer pipe, and approximately seven maintenance holes. The system will convey wastewater from the Rincon Point community to the existing wastewater collection system owned by the District. The improvements will be constructed in private roadways, within California Department of Transportation rights of way, within public roads owned by the City of Carpinteria, and within easements on private property. The project includes payment of a Development Impact Fee for each developed parcel per District ordinance to pay for capacity related capital improvements.
  
- B. **Sandyland Cove Sewer System Improvements.** The work includes construction of a sanitary sewer system to serve 38 existing homes and one undeveloped parcel within the Sandyland Cove community. Improvements include grinder pump units located at each residence, and approximately 2,900 linear feet of small diameter, low pressure force main pipe. The system will convey wastewater from the Sandyland Cove community to the existing wastewater collection system owned by the District. The improvements will be constructed in private roadways, within public roads owned by the City of Carpinteria, and within easements on private property. The project includes payment of a Development Impact Fee for each developed parcel per District ordinance to pay for capacity related capital improvements.

- C. **Sand Point Road Sewer System Improvements.** The work includes construction of a sanitary sewer system to serve 20 existing homes and one undeveloped parcel within the Sand Point Road community. Improvements include grinder pump units located at each residence, and approximately 3,000 linear feet of small diameter, low pressure force main pipe. The system will convey wastewater from the Sand Point Road Cove community to the existing wastewater collection system owned by the District. The improvements will be constructed in private roadways and within easements on private property. The project includes payment of a Development Impact Fee for each developed parcel per District ordinance to pay for capacity related capital improvements.
- D. **Padaro Lane Sewer System Improvements.** The work includes construction of a sanitary sewer system to serve 11 residential parcels located on Padaro Lane. Improvements include approximately 500 linear feet of 8-inch diameter gravity sewer pipe, two maintenance holes and 4-inch diameter service laterals to each parcel. The system will convey wastewater from the Padaro Lane parcels to the existing wastewater collection system owned by the District. The improvements will be constructed within public roads owned by the County of Santa Barbara. The project includes payment of a Development Impact Fee for each developed parcel per District ordinance to pay for capacity related capital improvements.

# VICINITY MAP FOR PROPOSED BOUNDARIES OF ASSESSMENT DISTRICT 2007-1

CARPINTERIA SANITARY DISTRICT  
COUNTIES OF SANTA BARBARA AND VENTURA  
STATE OF CALIFORNIA

PREPARED BY  
**PENFIELD & SMITH**  
MAY 2007

1. FILED IN THE OFFICE OF THE SECRETARY OF CARPINTERIA SANITARY DISTRICT  
THIS \_\_\_\_\_ DAY OF \_\_\_\_\_, 2007.

SECRETARY

2. I HEREBY CERTIFY THAT THE WITHIN MAP SHOWING PROPOSED  
BOUNDARIES OF ASSESSMENT DISTRICT 2007-1, CARPINTERIA  
SANITARY DISTRICT, COUNTY OF SANTA BARBARA, STATE OF  
CALIFORNIA, WAS APPROVED BY THE BOARD OF DIRECTORS OF THE  
CARPINTERIA SANITARY DISTRICT, AT A MEETING THEREOF, HELD ON THE  
DAY OF \_\_\_\_\_, 2007, BY ITS RESOLUTION NO. \_\_\_\_\_

SECRETARY

3. I FILED THIS \_\_\_\_\_ DAY OF \_\_\_\_\_, 2007 AT THE HOUR OF \_\_\_\_\_  
O'CLOCK \_\_\_\_\_ M. IN BOOK \_\_\_\_\_ OF MAPS OF ASSESSMENT AND COMMUNITY  
RECORDS IN THE OFFICE OF THE COUNTY RECORDER IN THE COUNTY OF SANTA BARBARA, STATE OF CALIFORNIA.

COUNTY RECORDER  
COUNTY OF SANTA BARBARA

4. I FILED THIS \_\_\_\_\_ DAY OF \_\_\_\_\_, 2007 AT THE HOUR OF \_\_\_\_\_  
O'CLOCK \_\_\_\_\_ M. IN BOOK \_\_\_\_\_ OF MAPS OF ASSESSMENT AND COMMUNITY  
RECORDS IN THE OFFICE OF THE COUNTY RECORDER IN THE COUNTY OF VENTURA, STATE OF CALIFORNIA.

COUNTY RECORDER  
COUNTY OF VENTURA

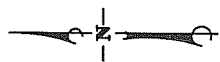
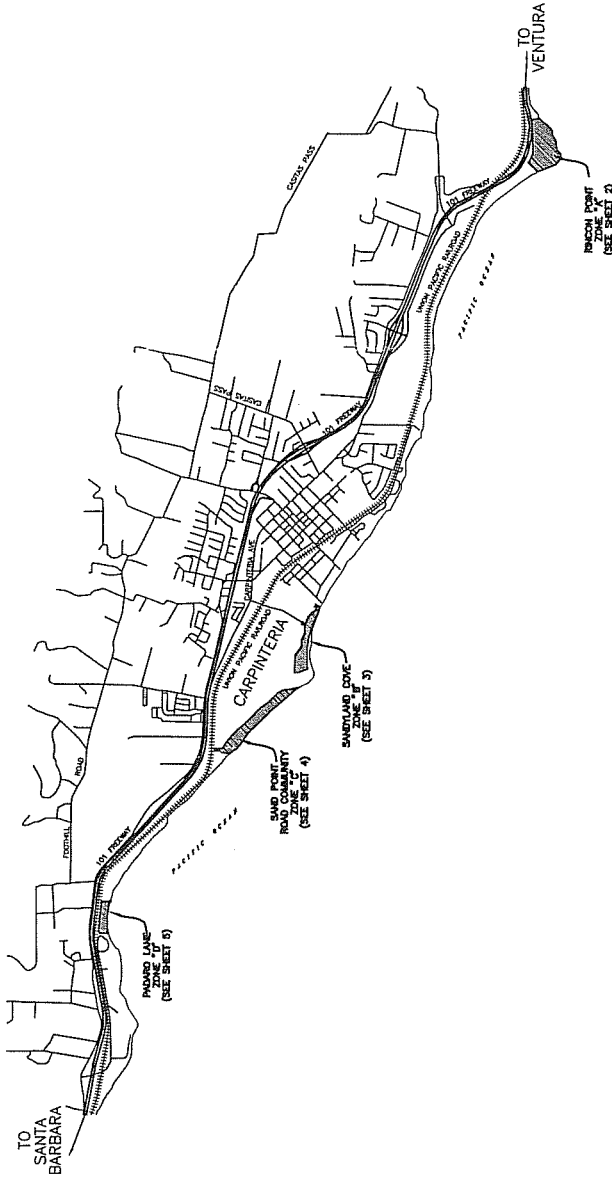


DIAGRAM PREPARED BY:  
**PENFIELD & SMITH**  
1337 DEL NORTE ROAD, SUITE 200  
VENTURA, CALIFORNIA 93010  
(805) 951-0758



**penfield & smith**  
ENGINEERS • SURVEYORS  
W.O. 1370.1.01 BOUNDARY\_2007.DWG

VICINITY MAP FOR PROPOSED BOUNDARIES OF ASSESSMENT DISTRICT 2007-1 CARPINTERIA SANITARY DISTRICT COUNTIES OF SANTA BARBARA AND VENTURA STATE OF CALIFORNIA	SHEET 1 OF 5
--	-----------------------

# PROPOSED BOUNDARIES OF "ZONE A" OF ASSESSMENT DISTRICT 2007-1

CARPINTERIA SANITARY DISTRICT  
COUNTIES OF SANTA BARBARA AND VENTURA  
STATE OF CALIFORNIA

PREPARED BY  
PENFIELD & SMITH  
MAY 2007

## PARCEL LIST

SANTA BARBARA COUNTY		VENTURA COUNTY	
PARCEL NO.	COUNTY APN	PARCEL NO.	COUNTY APN
1	001-230-49	35	008-0-170-355
2	001-230-50	36	008-0-170-356
3	001-230-51	37	008-0-170-357
4	001-230-52	38	008-0-170-358
5	001-230-53	39	008-0-170-359
6	001-230-54	40	008-0-170-360
7	001-230-55	41	008-0-170-361
8	001-230-56	42	008-0-170-362
9	001-230-57	43	008-0-170-363
10	001-230-58	44	008-0-170-364
11	001-230-59	45	008-0-170-365
12	001-230-60	46	008-0-170-366
13	001-230-61	47	008-0-170-367
14	001-230-62	48	008-0-170-368
15	001-230-63	49	008-0-170-369
16	001-230-64	50	008-0-170-370
17	001-230-65	51	008-0-170-371
18	001-230-66	52	008-0-170-372
		53	008-0-170-373
		54	008-0-170-374
		55	008-0-170-375
		56	008-0-170-376
		57	008-0-170-377
		58	008-0-170-378
		59	008-0-170-379
		60	008-0-170-380
		61	008-0-170-381
		62	008-0-170-382
		63	008-0-170-383
		64	008-0-170-384
		65	008-0-170-385
		66	008-0-170-386
		67	008-0-170-387
		68	008-0-170-388
		69	008-0-170-389
		70	008-0-170-390
		71	008-0-170-391
		72	008-0-170-392
		73	008-0-170-393
		74	008-0-170-394
		75	008-0-170-395

NOTES: 1. REFERENCE IS HEREBY MADE TO THE MAPS OF RECORD IN THE OFFICE OF THE ASSESSOR OF THE COUNTIES OF SANTA BARBARA AND VENTURA FOR THE DETAILED DESCRIPTION OF THE LINES AND DIMENSIONS OF ANY PARCELS SHOWN HEREIN, WHICH MAPS SHALL GOVERN FOR ALL DETAILS CONCERNING THE LINES AND DIMENSIONS OF SUCH PARCELS.  
2. THE BOUNDARIES AND DIMENSIONS OF ANY PARCELS SHOWN ON THIS MAP ARE SUBJECT TO THE LATEST ASSESSMENT DISTRICT MAPS AND DIMENSIONS AS SHOWN ON THIS MAP.  
3. THE BOUNDARIES AND DIMENSIONS OF ANY PARCELS SHOWN ON THIS MAP ARE SUBJECT TO THE LATEST ASSESSMENT DISTRICT MAPS AND DIMENSIONS AS SHOWN ON THIS MAP.

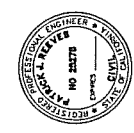
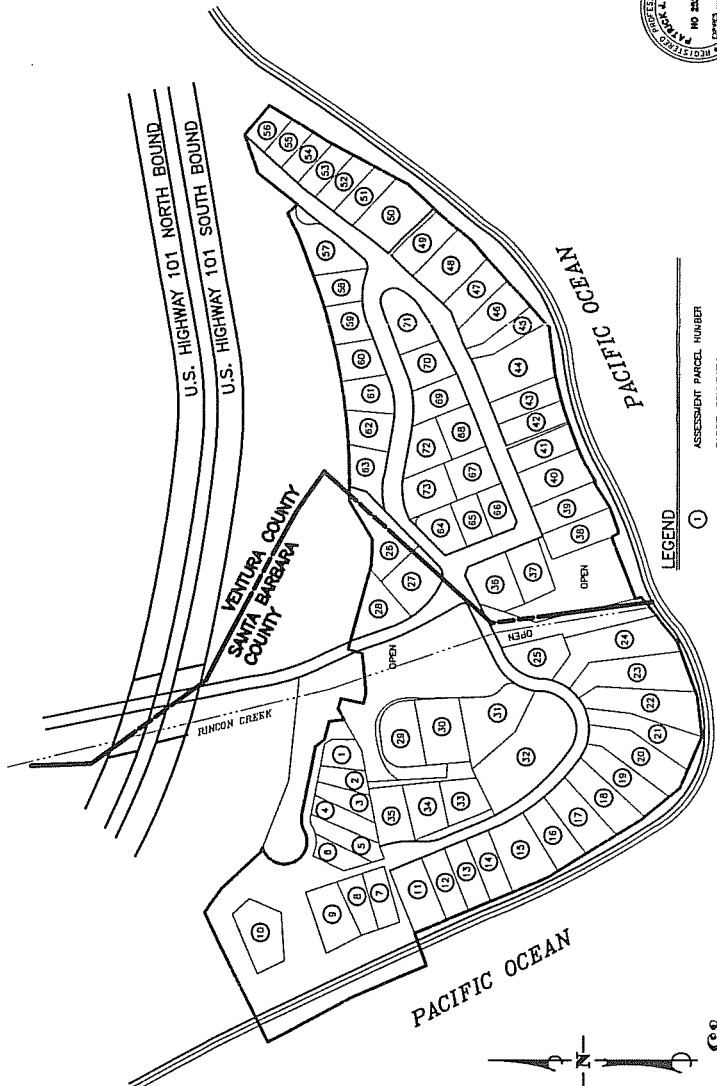
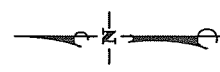
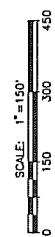
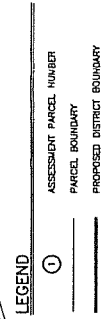


DIAGRAM PREPARED BY:  
**PENFIELD & SMITH**  
17700 RINCON BLVD., SUITE 200  
CARPINTERIA, CALIFORNIA 93010  
(805) 981-0705

PROPOSED BOUNDARIES OF "ZONE A"  
OF ASSESSMENT DISTRICT 2007-1  
CARPINTERIA SANITARY DISTRICT  
COUNTIES OF SANTA BARBARA AND VENTURA  
STATE OF CALIFORNIA

SHEET  
2  
OF  
5



**Penfield & Smith**  
ENGINEERS • SURVEYORS  
13791.01  
RINCON\_BLDG



# PROPOSED BOUNDARIES OF "ZONE B" OF THE ASSESSMENT DISTRICT 2007-1

CARPINTERIA SANITARY DISTRICT  
 COUNTIES OF SANTA BARBARA AND VENTURA  
 STATE OF CALIFORNIA

PREPARED BY  
 PENFIELD & SMITH  
 MAY 2007

ASMT. NO.	COUNTY APN	ASMT. NO.	COUNTY APN
74	003-410-05	85	003-421-05
75	003-410-06	86	003-421-06
76	003-410-07	87	003-421-07
77	003-410-08	88	003-421-08
78	003-410-09	89	003-421-09
79	003-410-10	90	003-421-10
80	003-410-11	91	003-421-11
81	003-410-12	92	003-421-12
82	003-410-13	93	003-421-13
83	003-410-14	94	003-421-14
84	003-410-15	95	003-421-15
85	003-410-16	96	003-421-16
86	003-410-17	97	003-421-17
87	003-410-18	98	003-421-18
88	003-410-19	99	003-421-19
89	003-410-20	100	003-421-20
90	003-410-21	101	003-421-21
91	003-410-22	102	003-421-22
92	003-410-23	103	003-421-23
93	003-410-24	104	003-421-24
94	003-410-25	105	003-421-25
95	003-410-26	106	003-421-26
96	003-410-27	107	003-421-27
97	003-410-28	108	003-421-28
98	003-410-29	109	003-421-29
99	003-410-30	110	003-421-30
100	003-410-31	111	003-421-31
101	003-410-32	112	003-421-32
102	003-410-33	113	003-421-33

NOTES:  
 REFERENCE IS HEREBY MADE TO THE MAPS AS REFERRED IN THE OFFICE OF THE ASSESSOR OF THE COUNTY OF SANTA BARBARA FOR THE DETAILED DESCRIPTION OF THE LINES AND DIMENSIONS OF ANY PARCELS SHOWN HEREIN, WHICH MAPS SHALL GOVERN FOR ALL DETAILS CONCERNING THE LINES AND DIMENSIONS OF SUCH PARCELS.  
 THE PROPERTY PARCELS SHOWN ON THIS MAP ARE NOT TO BE CONSIDERED AS BEING SUBJECT TO THE PLAN OF ASSESSORS LIEVED ON ASSESSMENT PARCELS SHOWN ON THIS DIAGRAM.

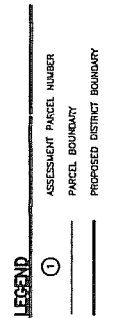
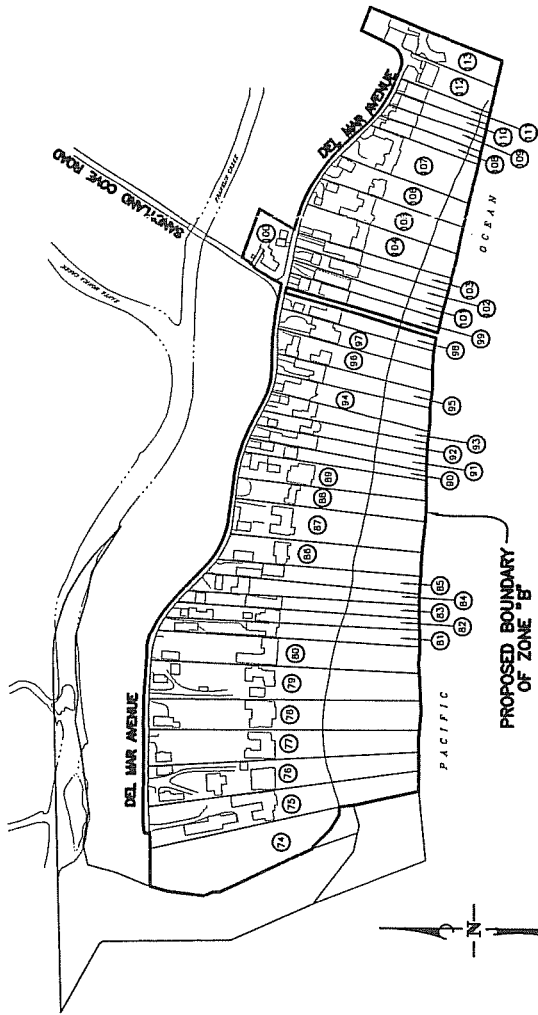
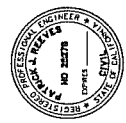


DIAGRAM PREPARED BY:  
 PENFIELD & SMITH  
 ENGINEERS & SURVEYORS  
 200 CALIFORNIA AVENUE, SUITE 200  
 SAN FRANCISCO, CALIFORNIA 94102  
 (415) 981-0706



PROPOSED BOUNDARIES OF "ZONE B" OF THE ASSESSMENT DISTRICT 2007-1  
 CARPINTERIA SANITARY DISTRICT  
 COUNTIES OF SANTA BARBARA AND VENTURA  
 STATE OF CALIFORNIA

SHEET  
 3  
 OF  
 5

penfield & smith  
 ENGINEERS & SURVEYORS  
 W.D. 13781.01 13781801\_2007.DWG

# PROPOSED BOUNDARIES OF "ZONE C" OF THE ASSESSMENT DISTRICT 2007-1

CARPINTERIA SANITARY DISTRICT  
COUNTIES OF SANTA BARBARA AND VENTURA  
STATE OF CALIFORNIA

PREPARED BY  
PENFIELD & SMITH  
MAY 2007

### PARCEL LIST

ASMT. NO.	COUNTY APN	ASMT. NO.	COUNTY APN
114	005-489-07	127	004-598-03
115	005-489-24	128	004-598-04
116	005-489-24	129	004-598-05
117	005-489-24	130	004-598-06
118	005-489-24	131	004-598-07
119	005-489-15	132	004-598-08
120	005-489-15	133	004-598-09
121	005-489-15	134	004-598-10
122	005-489-15	135	004-598-11
123	005-489-46		
124	005-489-20		
125	004-598-02		

NOTES:  
1. REFERENCE IS HEREBY MADE TO THE MAPS OF RECORD IN THE OFFICE OF THE ASSESSOR OF THE COUNTY OF SANTA BARBARA AND VENTURA FOR THE DETAILED DESCRIPTION OF THE LINES AND DIMENSIONS OF ANY PARCELS SHOWN HEREIN. THIS ASSESSMENT DISTRICT SHALL GOVERN FOR ALL DETAILS CONCERNING THE LINES AND DIMENSIONS OF SUCH PARCELS.  
2. RIGHTS-OF-WAY AND EASEMENTS TO BE ACQUIRED FOR THE IMPROVEMENTS TO BE MADE FOR THIS ASSESSMENT DISTRICT SHALL NOT BE SUBJECT TO THE LHM OF ASSESSMENTS LEVIED ON ASSESSMENT PARCELS SHOWN ON THIS DIAGRAM.

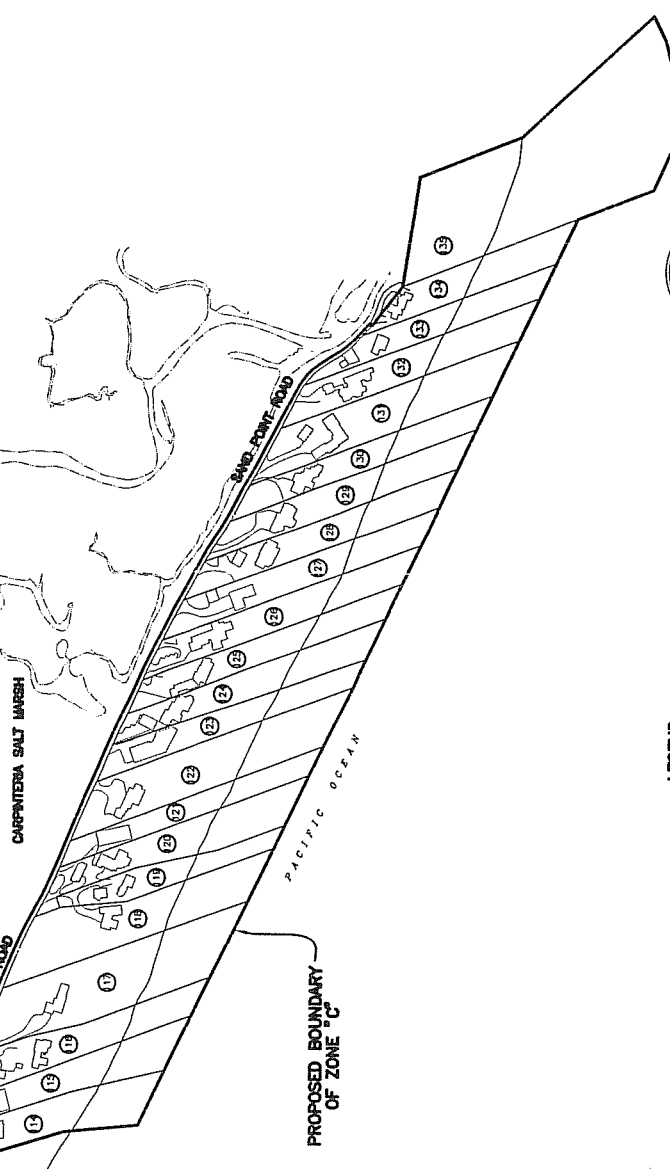


DIAGRAM PREPARED BY:  
PENFIELD & SMITH  
1337 DEL NORTE ROAD, SUITE 200  
CARPINTERIA, CALIFORNIA 93010  
(805) 881-0708

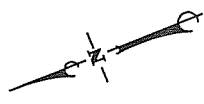
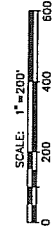
PROPOSED BOUNDARIES OF "ZONE C" OF THE ASSESSMENT DISTRICT 2007-1  
CARPINTERIA SANITARY DISTRICT  
COUNTIES OF SANTA BARBARA AND VENTURA  
STATE OF CALIFORNIA

SHEET  
4  
OF  
5



**LEGEND**

- ① ASSESSMENT PARCEL NUMBER
- PARCEL BOUNDARY
- PROPOSED DISTRICT BOUNDARY



**Penfield & Smith**  
ENGINEERS • SURVEYORS  
13781 BOLD 2007.DWG  
W.D. 13791.01

# ASSESSMENT DIAGRAM OF "ZONE D" OF THE ASSESSMENT DISTRICT 2007-1

CARPINTERIA SANITARY DISTRICT  
COUNTIES OF SANTA BARBARA AND VENTURA  
STATE OF CALIFORNIA

PREPARED BY  
PENFIELD & SMITH  
MAY 2007

ASMT. NO.	COUNTY APN
137	055-390-54
138	055-390-55
139	055-390-77
140	055-390-59
141	055-390-59
142	055-390-60
143	055-390-41
144	055-390-40
145	055-390-40
146	055-400-01

NOTES:  
1. REFERENCE IS HEREBY MADE TO THE MAPS OF RECORD IN THE OFFICE OF THE ASSESSOR OF THE COUNTY OF SANTA BARBARA AND VENTURA FOR THE DETAILED DESCRIPTION OF THE LINES AND DIMENSIONS OF ANY PARCELS SHOWN HEREIN. THIS ASSESSMENT SHALL GOVERN FOR ALL DETAILS CONCERNING THE LINES AND DIMENSIONS OF SUCH PARCELS.  
2. RIGHTS-OF-WAY AND EASEMENTS TO BE ACQUIRED FOR THE IMPROVEMENTS TO BE MADE FOR THIS ASSESSMENT DISTRICT SHALL NOT BE SUBJECT TO THE LENS OF ASSESSMENTS LAYED ON ASSESSMENT PARCELS SHOWN ON THIS DIAGRAM.

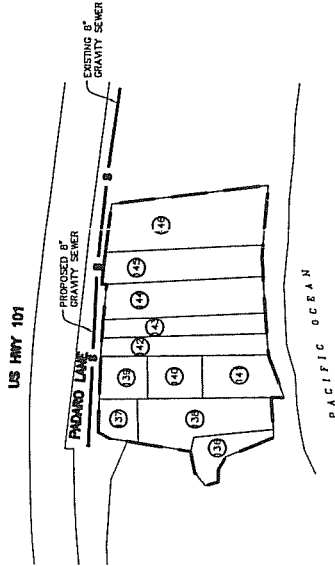
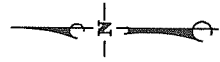
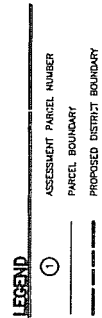


DIAGRAM PREPARED BY:  
**PENFIELD & SMITH**  
11111 WILSON AVENUE SUITE 200  
CARPINTERIA, CALIFORNIA 93010  
(805) 981-0708



ASSESSMENT DIAGRAM OF "ZONE D" OF THE  
ASSESSMENT DISTRICT 2007-1  
CARPINTERIA SANITARY DISTRICT  
COUNTIES OF SANTA BARBARA AND VENTURA  
STATE OF CALIFORNIA

SHEET  
5  
OF  
5



**Penfield & Smith**  
ENGINEERS • SURVEYORS  
PADARO.LAST.DWG  
W.O. 13791.01

**RESOLUTION NO. R-190**

**A RESOLUTION REQUESTING APPROVAL BY  
THE COUNTY OF SANTA BARBARA  
OF PROPOSED RESOLUTION OF INTENTION AND BOUNDARY MAP  
UNDER SECTION 10104 OF THE STREETS AND HIGHWAYS CODE OF  
CALIFORNIA**

**CARPINTERIA SANITARY DISTRICT  
Assessment District No. 2007-1**

**RESOLVED** by the Board of Directors (the "Board of Directors") of the Carpinteria Sanitary District (the "District"), County of Santa Barbara, State of California, that

**WHEREAS**, the District is a sanitary district, duly organized and operating under the laws of the State of California;

**WHEREAS**, it is the intention of the Board of Directors to begin special assessment proceedings under the Municipal Improvement Act of 1913 (Division 12 of the California Streets and Highways Code) (the "Act") for the making of sanitary sewer system improvements consisting of a collection system and transmission facilities for three neighborhoods known as "Sand Point Road," "Sandyland Cove" and "Padaro Lane" (which are located entirely within Santa Barbara County), and a fourth neighborhood known as "Rincon Point" (which is located within both Santa Barbara County and Ventura County), by the adoption of a Resolution of Intention to Make Acquisitions and Improvements (the "Resolution of Intention") for the District's proposed Assessment District No. 2007-1 (the "Assessment District"), and to assess the costs thereof and the expenses incidental thereto upon the Assessment District benefited thereby, the exterior boundaries of which are shown on the Map of Proposed Boundaries of the Assessment District (the "Boundary Map"), a copy of which is on file in the office of the Secretary of the District;

**WHEREAS**, the land to be assessed lies within the unincorporated territories of the Counties of Santa Barbara and Ventura (the "Counties");

**WHEREAS**, the proceedings are being initiated by the Board of Directors, being a legislative body other than that of a city or a county and, therefore, Section 10104 of the Act requires that the form of the Resolution of Intention and the form of the Boundary Map for the Assessment District be approved by the Board of Supervisors of Santa Barbara County and the Board of Supervisors of Ventura County, as the legislative bodies of the respective Counties;

**WHEREAS**, the public health, safety, interest, convenience and necessity will be served by the making of the acquisitions and improvements and the levying of the assessments;

NOW, THEREFORE, IT IS ORDERED, as follows:

1. Request is made that the proposed Resolution of Intention to be adopted by the Board of Directors in the proceedings and the Boundary Map for the Assessment District be approved, by resolution, by the Board of Supervisors of Santa Barbara County. A similar request is being made to the Board of Supervisors of Ventura County with respect to the portions of the proposed Assessment District located within that County.

2. The Secretary of the District is directed to file with the Clerk of the Board of Supervisors of Santa Barbara County a certified copy of this Resolution, together with copies of the proposed Resolution of Intention and the Boundary Map for the Assessment District.

\*\*\*\*\*

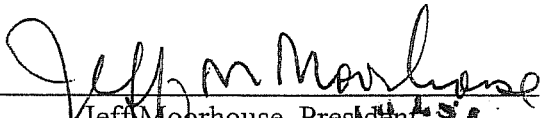
ADOPTED AND APPROVED BY THE BOARD OF DIRECTORS on March 6, 2007, by the following vote:

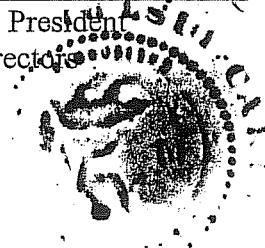
AYES: Director Treloar, Director Graf, Director Moorhouse, Director Horwitz,  
Director Damron

NOES: None


ABSENT: None

ABSTENTIONS: None

  
\_\_\_\_\_  
Jeff Moorhouse, President  
Board of Directors



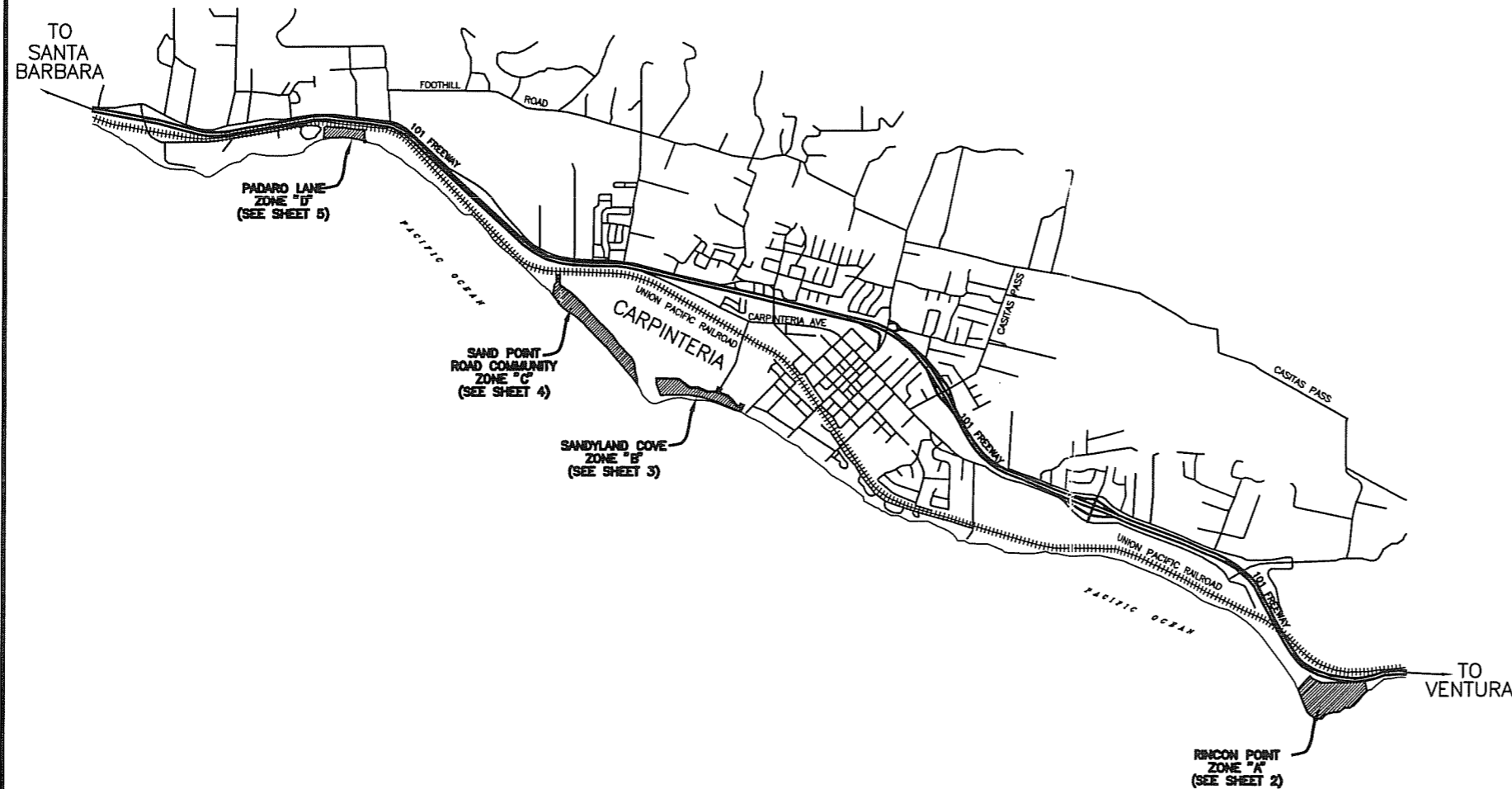
ATTEST:

By:   
\_\_\_\_\_  
Michael Damron, Secretary  
Board of Directors

**VICINITY MAP FOR  
PROPOSED BOUNDARIES OF  
ASSESSMENT DISTRICT 2007-1**

**CARPINTERIA SANITARY DISTRICT  
COUNTIES OF SANTA BARBARA AND VENTURA  
STATE OF CALIFORNIA**

**PREPARED BY  
PENFIELD & SMITH  
MAY 2007**



1. FILED IN THE OFFICE OF THE SECRETARY OF CARPINTERIA SANITARY DISTRICT THIS \_\_\_\_\_ DAY OF \_\_\_\_\_, 2007.

SECRETARY

2. I HEREBY CERTIFY THAT THE WITHIN MAP SHOWING PROPOSED BOUNDARIES OF SEWER ASSESSMENT DISTRICT 2007-1, CARPINTERIA SANITARY DISTRICT, COUNTIES OF SANTA BARBARA AND VENTURA, STATE OF CALIFORNIA, WAS APPROVED BY THE BOARD OF DIRECTORS OF THE CARPINTERIA SANITARY DISTRICT, AT A MEETING THEREOF, HELD ON THE \_\_\_\_\_ DAY OF \_\_\_\_\_, 2007, BY ITS RESOLUTION NO. \_\_\_\_\_.

SECRETARY

3. FILED THIS \_\_\_\_\_ DAY OF \_\_\_\_\_, 2007, AT THE HOUR OF \_\_\_\_\_ O'CLOCK \_\_\_\_\_ M., IN BOOK \_\_\_\_\_ OF MAPS OF ASSESSMENT AND COMMUNITY FACILITIES DISTRICTS AT PAGE \_\_\_\_\_ IN THE OFFICE OF THE COUNTY RECORDER IN THE COUNTY OF SANTA BARBARA, STATE OF CALIFORNIA.

COUNTY RECORDER  
COUNTY OF SANTA BARBARA

4. FILED THIS \_\_\_\_\_ DAY OF \_\_\_\_\_, 2007 AT THE HOUR OF \_\_\_\_\_ O'CLOCK \_\_\_\_\_ M., IN BOOK \_\_\_\_\_ OF MAPS OF ASSESSMENT AND COMMUNITY FACILITIES DISTRICTS AT PAGE \_\_\_\_\_ IN THE OFFICE OF THE COUNTY RECORDER IN THE COUNTY OF VENTURA, STATE OF CALIFORNIA.

COUNTY RECORDER  
COUNTY OF VENTURA



**Penfield & Smith**  
ENGINEERS • SURVEYORS  
W.O. 13791.01 BOUNDARY\_2007.DWG



DIAGRAM PREPARED BY:  
**PENFIELD & SMITH**  
1327 DEL NORTE ROAD, SUITE 200  
CAMARILLO, CALIFORNIA 93010  
(805) 981-0706

**VICINITY MAP FOR PROPOSED BOUNDARIES OF  
ASSESSMENT DISTRICT 2007-1  
CARPINTERIA SANITARY DISTRICT  
COUNTIES OF SANTA BARBARA AND VENTURA  
STATE OF CALIFORNIA**

**SHEET  
1  
OF  
5**

# PROPOSED BOUNDARIES OF "ZONE A" OF ASSESSMENT DISTRICT 2007-1

CARPINTERIA SANITARY DISTRICT  
COUNTIES OF SANTA BARBARA AND VENTURA  
STATE OF CALIFORNIA

PREPARED BY  
PENFIELD & SMITH  
MAY 2007

SANTA BARBARA COUNTY				VENTURA COUNTY			
PARCEL NO.	COUNTY APN	PARCEL NO.	COUNTY APN	PARCEL NO.	COUNTY APN	PARCEL NO.	COUNTY APN
1	001-230-49	19	001-230-30	36	008-0-170-355	55	008-0-170-305
2	001-230-50	20	001-230-12	37	008-0-170-365	56	008-0-170-380
3	001-230-51	21	001-230-22	38	008-0-170-345	57	008-0-170-400
4	001-230-52	22	001-230-33	39	008-0-170-200	58	008-0-170-410
5	001-230-53	23	001-230-34	40	008-0-170-195	59	008-0-170-420
6	001-230-54	24	001-230-35	41	008-0-170-180	60	008-0-170-430
7	001-230-55	25	001-230-14	42	008-0-170-175	61	008-0-170-440
8	001-230-56	26	001-230-42	43	008-0-170-165	62	008-0-170-450
9	001-230-57	27	001-230-48	44	008-0-170-155	63	008-0-170-460
10	001-230-58	28	001-230-47	45	008-0-170-140	64	008-0-170-245
11	001-230-06	29	001-230-18	46	008-0-170-130	65	008-0-170-270
12	001-230-07	30	001-230-39	47	008-0-170-120	66	008-0-170-255
13	001-230-08	31	001-230-32	48	008-0-170-115	67	008-0-170-480
14	001-230-09	32	001-230-31	49	008-0-170-100	68	008-0-170-490
15	001-230-10	33	001-230-20	50	008-0-170-370	69	008-0-170-510
16	001-230-27	34	001-230-37	51	008-0-170-380	70	008-0-170-520
17	001-230-28	35	001-230-44	52	008-0-170-075	71	008-0-170-530
18	001-230-29			53	008-0-170-065	72	008-0-170-500
				54	008-0-170-055	73	008-0-170-470

NOTES: 1. REFERENCE IS HEREBY MADE TO THE MAPS OF RECORD IN THE OFFICE OF THE ASSESSOR OF THE COUNTIES OF SANTA BARBARA AND VENTURA FOR THE DETAILED DESCRIPTION OF THE LINES AND DIMENSIONS OF ANY PARCELS SHOWN HEREIN, WHICH MAPS SHALL GOVERN FOR ALL DETAILS CONCERNING THE LINES AND DIMENSIONS OF SUCH PARCELS.  
2. RIGHTS-OF-WAY AND EASEMENTS TO BE ACQUIRED FOR THE IMPROVEMENTS TO BE MADE FOR THIS ASSESSMENT DISTRICT SHALL NOT BE SUBJECT TO THE LIEN OF ASSESSMENTS LEVIED ON ASSESSMENT PARCELS SHOWN ON THIS DIAGRAM.

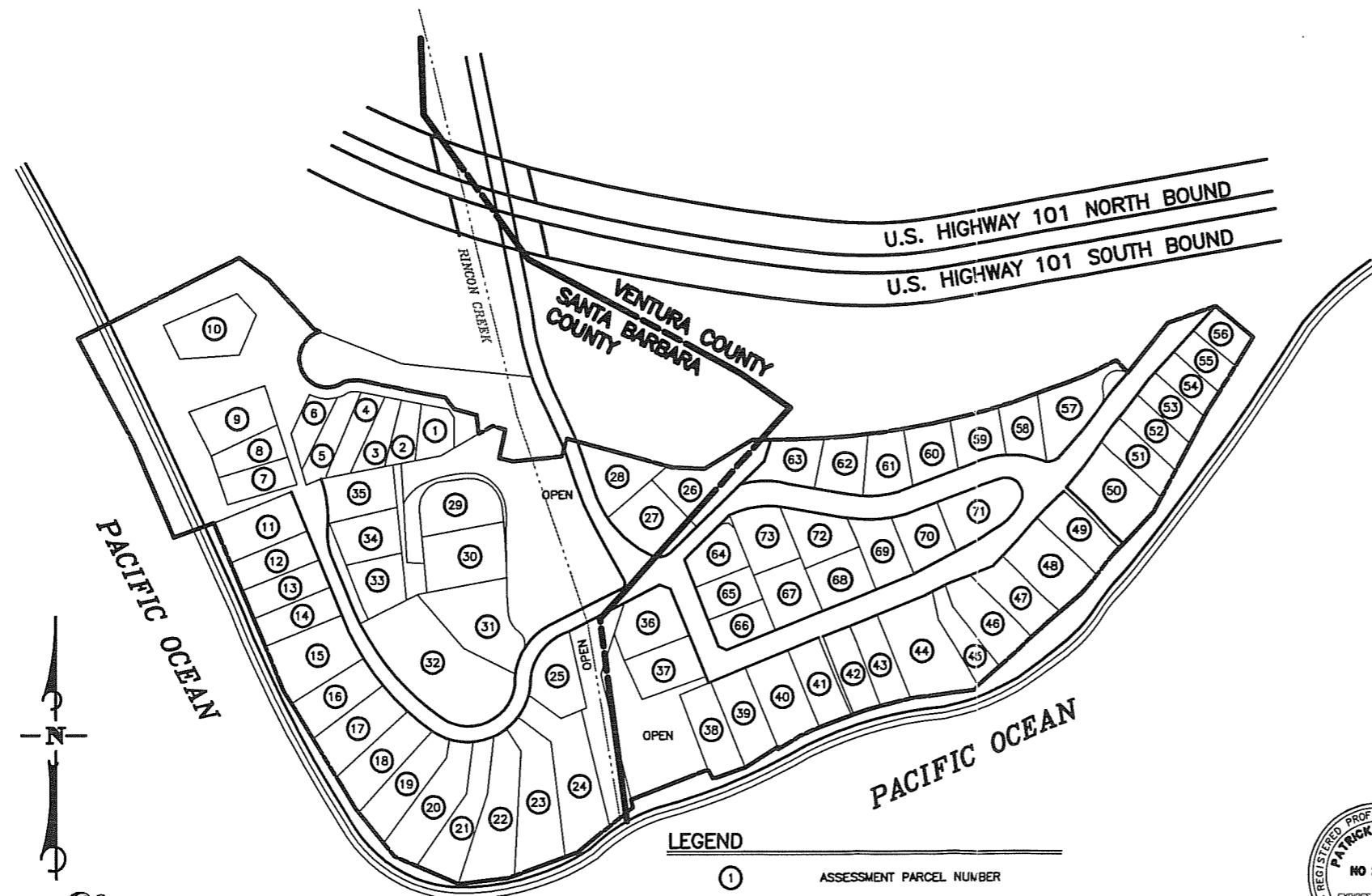


DIAGRAM PREPARED BY:  
**PENFIELD & SMITH**  
1327 DEL NORTE ROAD, SUITE 200  
CAMARILLO, CALIFORNIA 93010  
(805) 981-0706



**Penfield & Smith**  
ENGINEERS • SURVEYORS  
13791.01 RINCON\_BD1.DWG

SCALE: 1"=150'  
0 150 300 450

**LEGEND**  
① ASSESSMENT PARCEL NUMBER  
— PARCEL BOUNDARY  
— PROPOSED DISTRICT BOUNDARY

PROPOSED BOUNDARIES OF "ZONE A" OF ASSESSMENT DISTRICT 2007-1 CARPINTERIA SANITARY DISTRICT COUNTIES OF SANTA BARBARA AND VENTURA STATE OF CALIFORNIA	SHEET 2 OF 5
---	-----------------------

**PROPOSED BOUNDARIES  
OF "ZONE B" OF THE  
ASSESSMENT DISTRICT 2007-1**

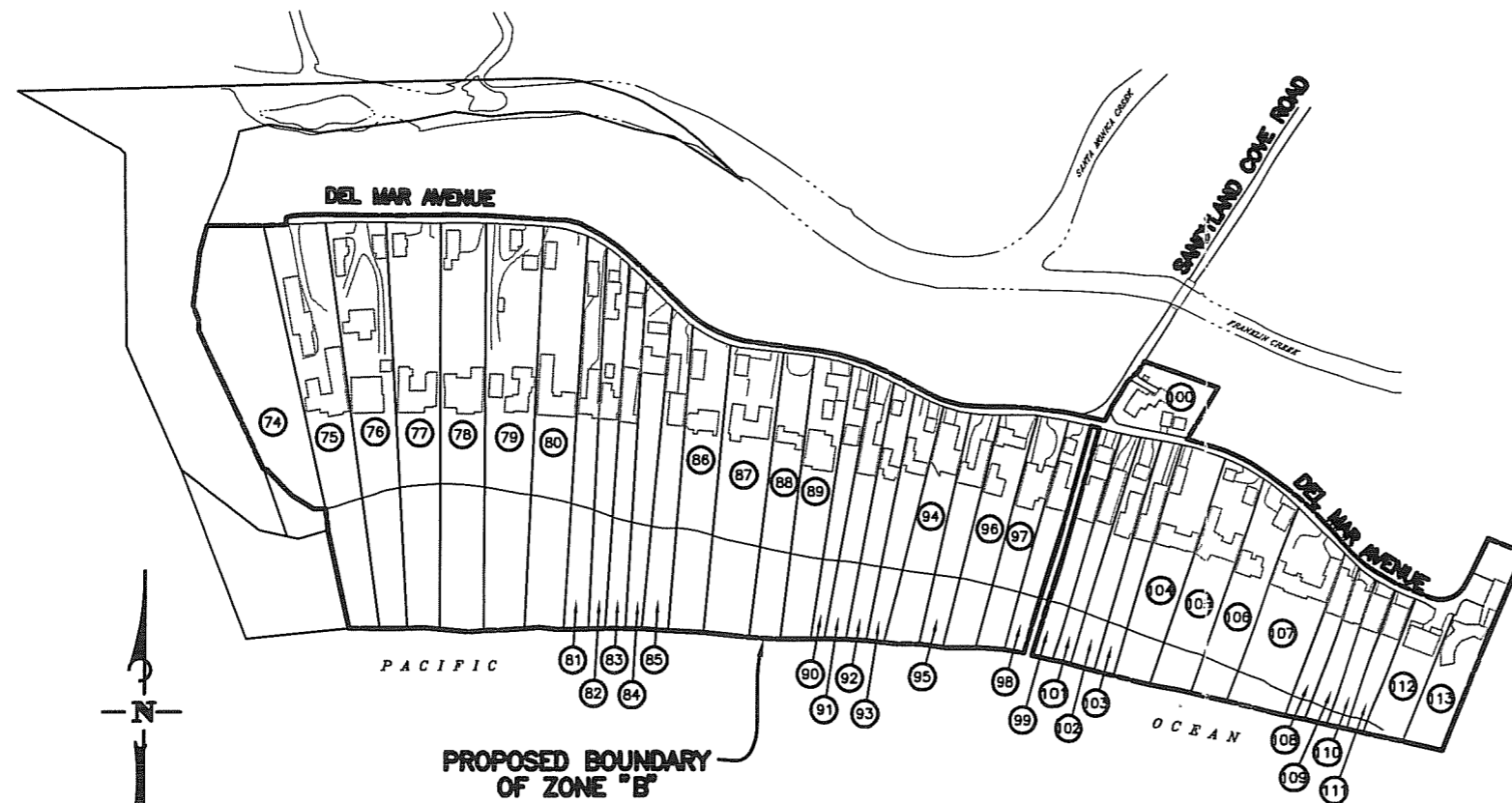
**CARPINTERIA SANITARY DISTRICT  
COUNTIES OF SANTA BARBARA AND VENTURA  
STATE OF CALIFORNIA**

**PREPARED BY  
PENFIELD & SMITH  
MAY 2007**

PARCEL LIST			
ASMT. NO.	COUNTY APN	ASMT. NO.	COUNTY APN
74	004-031-06	95	003-421-05
75	003-410-03	96	003-421-06
76	003-410-04	97	003-421-07
77	003-410-05	98	003-421-08
78	003-410-06	99	003-422-01
79	003-410-07	100	004-031-08
80	003-410-08	101	003-422-14
81	003-410-09	102	003-422-15
82	003-410-10	103	003-422-03
83	003-410-20	104	003-422-04
84	003-410-19	105	003-422-05
85	003-410-12	106	003-422-06
86	003-410-13	107	003-422-07
87	003-410-14	108	003-422-08
88	003-410-15	109	003-422-09
89	003-410-18	110	003-422-10
90	003-410-17	111	003-422-11
91	003-421-01	112	003-422-12
92	003-421-02	113	004-031-12
93	003-421-03		
94	003-421-04		

**NOTES:**

1. REFERENCE IS HEREBY MADE TO THE MAPS OF RECORD IN THE OFFICE OF THE ASSESSOR OF THE COUNTY OF SANTA BARBARA FOR THE DETAILED DESCRIPTION OF THE LINES AND DIMENSIONS OF ANY PARCELS SHOWN HEREIN, WHICH MAPS SHALL GOVERN FOR ALL DETAILS CONCERNING THE LINES AND DIMENSIONS OF SUCH PARCELS.
2. RIGHTS-OF-WAY AND EASEMENTS TO BE ACQUIRED FOR THE IMPROVEMENTS TO BE MADE FOR THIS ASSESSMENT DISTRICT SHALL NOT BE SUBJECT TO THE LIEN OF ASSESSMENTS LEVIED ON ASSESSMENT PARCELS SHOWN ON THIS DIAGRAM.



**PROPOSED BOUNDARY  
OF ZONE "B"**

**LEGEND**

- ① ASSESSMENT PARCEL NUMBER
- PARCEL BOUNDARY
- PROPOSED DISTRICT BOUNDARY

DIAGRAM PREPARED BY:  
**PENFIELD & SMITH**  
1327 DEL NORTE ROAD, SUITE 200  
CAMARILLO, CALIFORNIA 93010  
(805) 981-0706



**Penfield & Smith**  
ENGINEERS • SURVEYORS  
W.O. 13791.01 13791BD1\_2007.DWG

SCALE: 1"=200'  
0 200 400 600

**PROPOSED BOUNDARIES OF "ZONE B" OF THE  
ASSESSMENT DISTRICT 2007-1  
CARPINTERIA SANITARY DISTRICT  
COUNTIES OF SANTA BARBARA AND VENTURA  
STATE OF CALIFORNIA**

**SHEET  
3  
OF  
5**



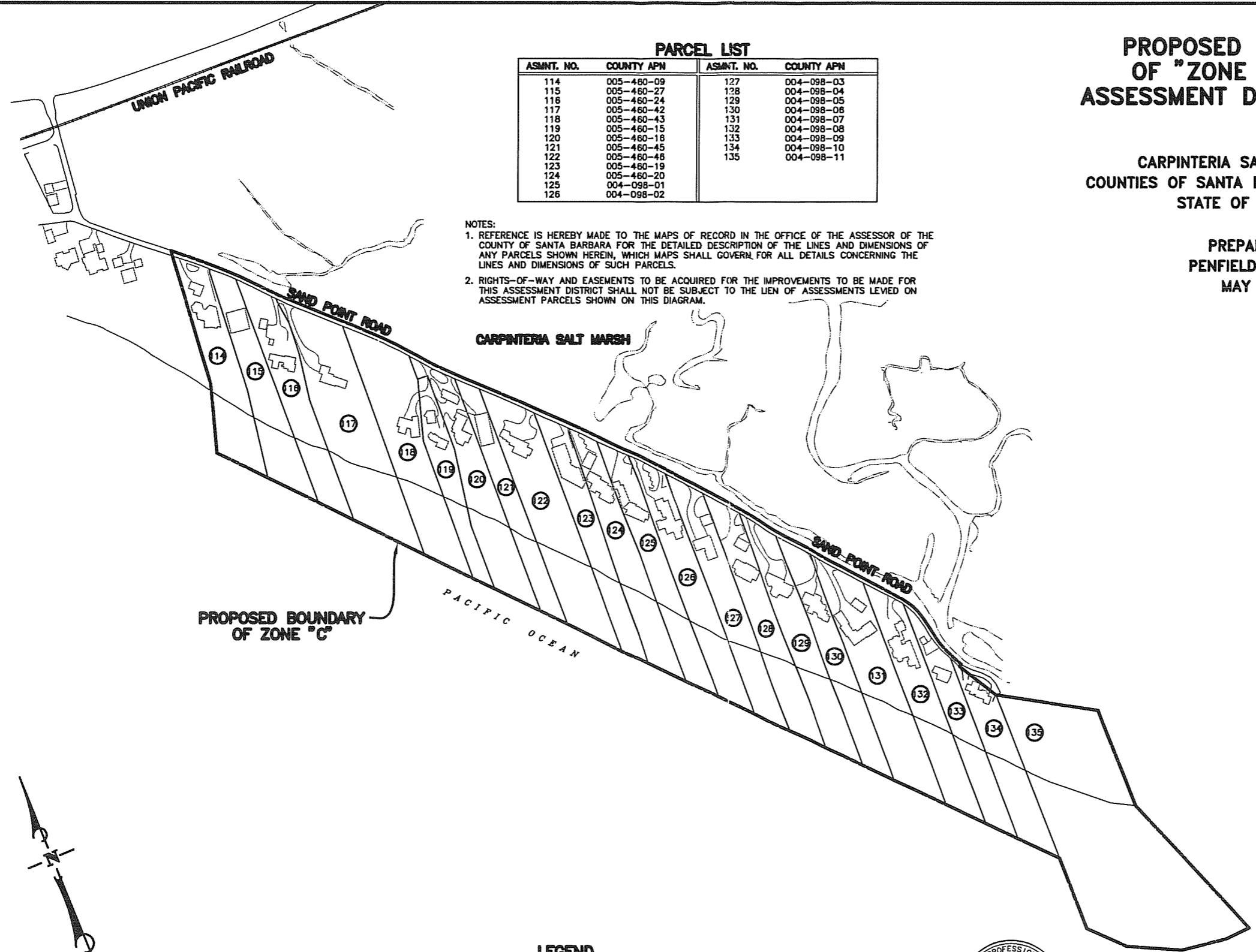
**PROPOSED BOUNDARIES  
OF "ZONE C" OF THE  
ASSESSMENT DISTRICT 2007-1**

**CARPINTERIA SANITARY DISTRICT  
COUNTIES OF SANTA BARBARA AND VENTURA  
STATE OF CALIFORNIA**

**PREPARED BY  
PENFIELD & SMITH  
MAY 2007**

PARCEL LIST			
ASMT. NO.	COUNTY APN	ASMT. NO.	COUNTY APN
114	005-460-09	127	004-098-03
115	005-460-27	128	004-098-04
116	005-460-24	129	004-098-05
117	005-460-42	130	004-098-06
118	005-460-43	131	004-098-07
119	005-460-15	132	004-098-08
120	005-460-18	133	004-098-09
121	005-460-45	134	004-098-10
122	005-460-46	135	004-098-11
123	005-460-19		
124	005-460-20		
125	004-098-01		
126	004-098-02		

- NOTES:
1. REFERENCE IS HEREBY MADE TO THE MAPS OF RECORD IN THE OFFICE OF THE ASSESSOR OF THE COUNTY OF SANTA BARBARA FOR THE DETAILED DESCRIPTION OF THE LINES AND DIMENSIONS OF ANY PARCELS SHOWN HEREIN, WHICH MAPS SHALL GOVERN FOR ALL DETAILS CONCERNING THE LINES AND DIMENSIONS OF SUCH PARCELS.
  2. RIGHTS-OF-WAY AND EASEMENTS TO BE ACQUIRED FOR THE IMPROVEMENTS TO BE MADE FOR THIS ASSESSMENT DISTRICT SHALL NOT BE SUBJECT TO THE LIEN OF ASSESSMENTS LEVIED ON ASSESSMENT PARCELS SHOWN ON THIS DIAGRAM.



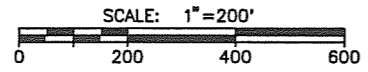
PROPOSED BOUNDARY  
OF ZONE "C"

LEGEND	
①	ASSESSMENT PARCEL NUMBER
—	PARCEL BOUNDARY
—	PROPOSED DISTRICT BOUNDARY



DIAGRAM PREPARED BY:  
**PENFIELD & SMITH**  
1327 DEL NORTE ROAD, SUITE 200  
CAMARILLO, CALIFORNIA 93010  
(805) 981-0706

**Penfield & Smith**  
ENGINEERS • SURVEYORS  
W.O. 13791.01 137918D2\_2007.DWG



**PROPOSED BOUNDARIES OF "ZONE C" OF THE  
ASSESSMENT DISTRICT 2007-1  
CARPINTERIA SANITARY DISTRICT  
COUNTIES OF SANTA BARBARA AND VENTURA  
STATE OF CALIFORNIA**

**SHEET  
4  
OF  
5**

# ASSESSMENT DIAGRAM OF "ZONE D" OF THE ASSESSMENT DISTRICT 2007-1

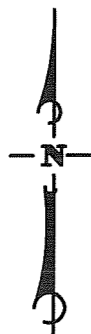
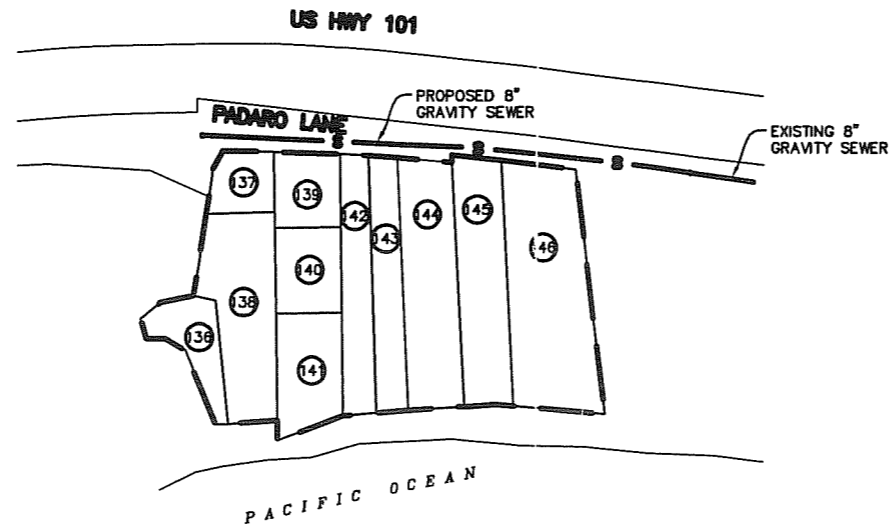
CARPINTERIA SANITARY DISTRICT  
COUNTIES OF SANTA BARBARA AND VENTURA  
STATE OF CALIFORNIA

PREPARED BY  
PENFIELD & SMITH  
MAY 2007

PARCEL LIST	
ASMT. NO.	COUNTY APN
136	005-390-27
137	005-390-63
138	005-390-77
139	005-390-58
140	005-390-59
141	005-390-60
142	005-390-45
143	005-390-41
144	005-390-40
145	005-390-37
146	005-400-01

**NOTES:**

1. REFERENCE IS HEREBY MADE TO THE MAPS OF RECORD IN THE OFFICE OF THE ASSESSOR OF THE COUNTY OF SANTA BARBARA FOR THE DETAILED DESCRIPTION OF THE LINES AND DIMENSIONS OF ANY PARCELS SHOWN HEREIN, WHICH MAPS SHALL GOVERN FOR ALL DETAILS CONCERNING THE LINES AND DIMENSIONS OF SUCH PARCELS.
2. RIGHTS-OF-WAY AND EASEMENTS TO BE ACQUIRED FOR THE IMPROVEMENTS TO BE MADE FOR THIS ASSESSMENT DISTRICT SHALL NOT BE SUBJECT TO THE LIEN OF ASSESSMENTS LEVIED ON ASSESSMENT PARCELS SHOWN ON THIS DIAGRAM.



**Penfield & Smith**  
ENGINEERS • SURVEYORS  
W.O. 13791.01 PADARO\_AS1.DWG

SCALE: 1" = 200'  
0 200 400 600

**LEGEND**

- ① ASSESSMENT PARCEL NUMBER
- PARCEL BOUNDARY
- - - - PROPOSED DISTRICT BOUNDARY



DIAGRAM PREPARED BY:  
**PENFIELD & SMITH**  
1327 DEL NORTE ROAD, SUITE 200  
CAMARILLO, CALIFORNIA 93010  
(805) 981-0706

ASSESSMENT DIAGRAM OF "ZONE D" OF THE  
ASSESSMENT DISTRICT 2007-1  
CARPINTERIA SANITARY DISTRICT  
COUNTIES OF SANTA BARBARA AND VENTURA  
STATE OF CALIFORNIA

SHEET  
5  
OF  
5