

Update on Implementation of the Sustainable Groundwater Management Act

Santa Barbara County Water Agency

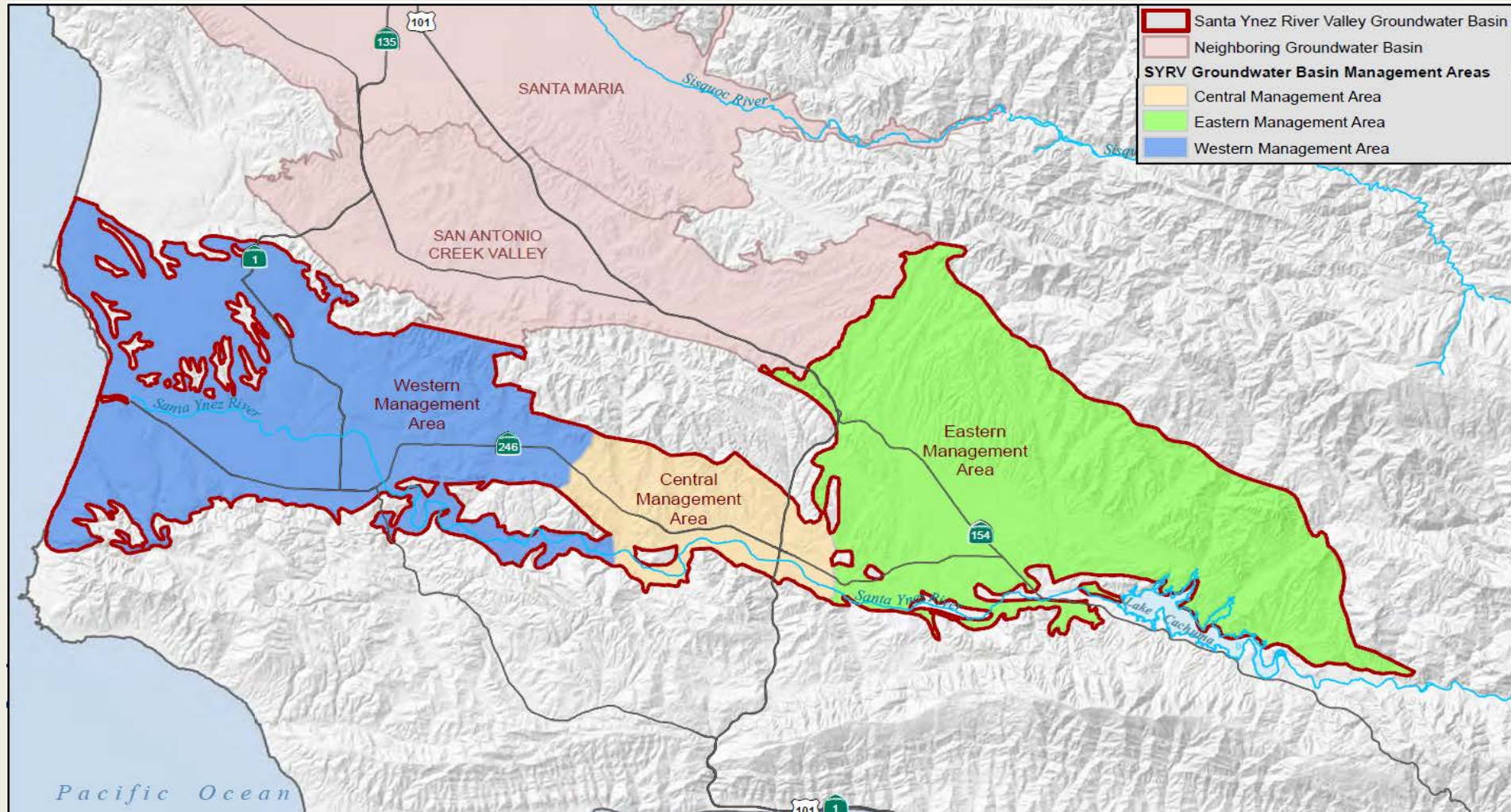
Board of Directors

February 13, 2018

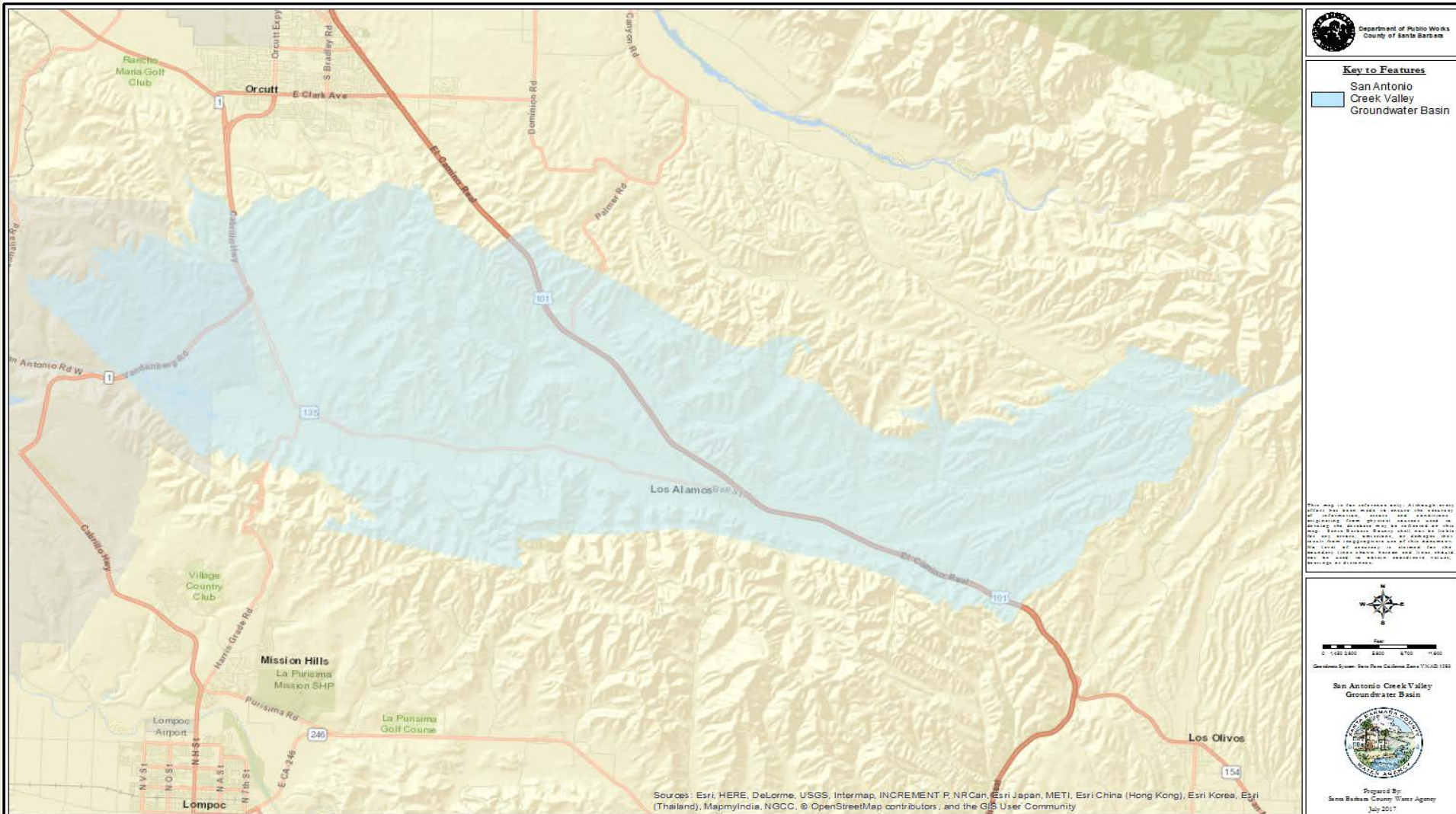
Cuyama Valley Groundwater Basin



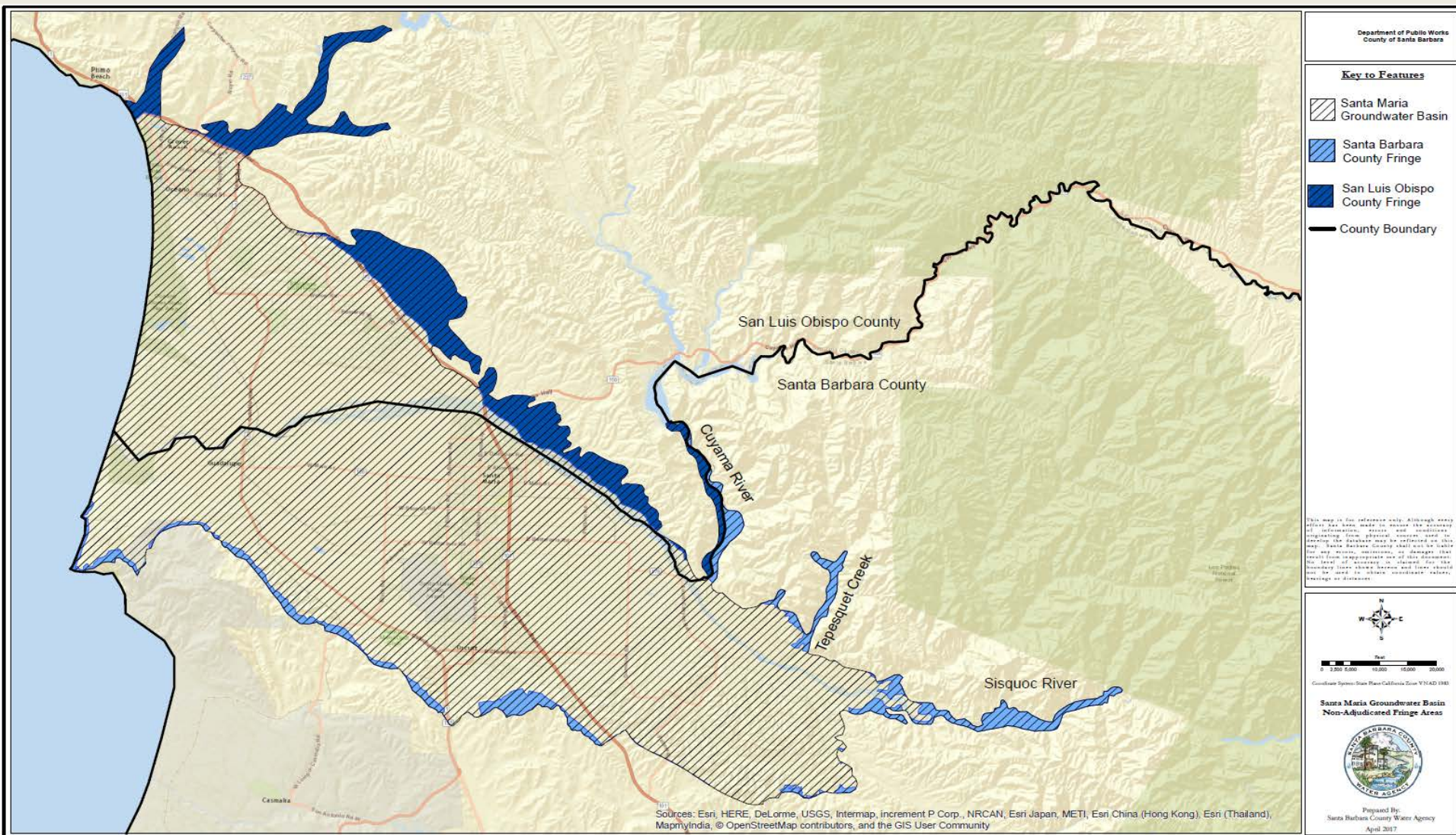
Santa Ynez River Valley Groundwater Basin



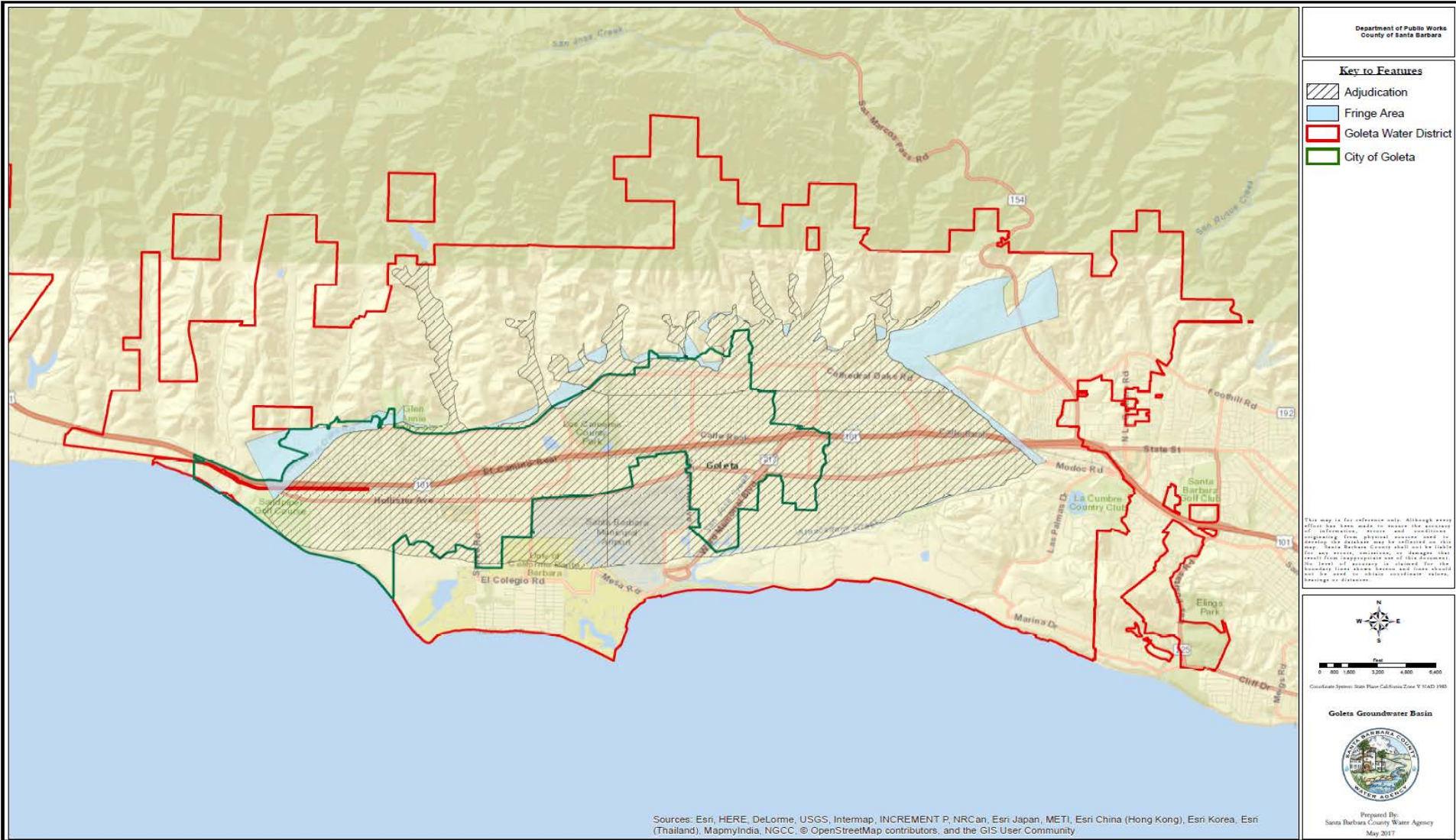
San Antonio Creek Valley Groundwater Basin



Santa Maria Groundwater Basin



Goleta Groundwater Basin Fringe



Sources: Esri, HERE, DeLorme, USGS, Intermap, INCREMENT P, NRCan, Esri-Japan, METI, Esri China (Hong Kong), Esri Korea, Esri (Thailand), MapmyIndia, NGCC, © OpenStreetMap contributors, and the GIS User Community

Recommendation

- Receive and file this report;
- Direct staff to submit an initial notification to the Department of Water Resources for a basin boundary modification in the Santa Maria Fringe area;
- Set a hearing for May 8, 2018 to consider a basin boundary modification for the Santa Maria Fringe Area; and
- Determine that the proposed actions are not a project under the California Environmental Quality Act.