



[www.FinanceDTA.com](http://www.FinanceDTA.com)

**FISCAL YEAR 2020-2021  
ADMINISTRATION REPORT  
COUNTY OF SANTA BARBARA  
COMMUNITY FACILITIES DISTRICT  
NO. 2002-1  
(ORCUTT COMMUNITY PLAN)**

JUNE 17, 2020

Public Finance  
Public Private Partnerships  
Development Economics  
Clean Energy Bonds

*Newport Beach / San Jose / San Francisco / Riverside  
Dallas / Houston / Raleigh*



[www.FinanceDTA.com](http://www.FinanceDTA.com)

5000 Birch Street, Suite 6000  
Newport Beach, CA 92660

## **FISCAL YEAR 2020-2021 ADMINISTRATION REPORT**

### **COUNTY OF SANTA BARBARA COMMUNITY FACILITIES DISTRICT No. 2002-1 (ORCUTT COMMUNITY PLAN)**

**Prepared for**

**COUNTY OF SANTA BARBARA  
105 East Anapamu Street, 4th Floor  
Santa Barbara, CA 93101**

**TABLE  
OF CONTENTS**

**SECTION**

*Introduction*.....1

*I. Special Tax Classifications and Development Update* ..... 2

    A. Special Tax Classifications .....3

    B. Development Update.....4

*II. Fiscal Year 2019-2020 Levy*.....6

*III. Fiscal Year 2020-2021 Special Tax Requirement*.7

*IV. Method of Apportionment*..... 8

    A. Maximum Special Taxes .....8

    B. Apportionment of Special Taxes .....8

**EXHIBITS**

- Exhibit A:** Boundary Map
- Exhibit B:** Fiscal Year 2020-2021 Special Tax Levy

## **INTRODUCTION**

This Mello-Roos Community Facilities District Administration Report presents the findings of the research and financial analysis performed by David Taussig & Associates, Inc. to determine the special tax requirement for Community Facilities District No. 2002-1 (Orcutt Community Plan) ("CFD No. 2002-1") of the County of Santa Barbara ("the County") for fiscal year 2020-2021.

CFD No. 2002-1 is a legally constituted governmental entity established under the Mello-Roos Community Facilities Act of 1982, (the "Act") as amended. The Act provides an alternative method for the financing of certain public facilities and services. Specifically, CFD No. 2002-1 is authorized to levy an annual special tax to finance (i) fire protection and suppression services, (ii) police protection services, (iii) maintenance of parks, parkways and open spaces, and (iv) flood and storm protection services. A map showing the property in CFD No. 2002-1 is included in Exhibit A.

The authorized services are funded through the annual levy and collection of special taxes from all property subject to the tax within the community facilities district. Pursuant to the Rate and Method of Apportionment ("RMA"), the special tax shall be levied in perpetuity as necessary to meet the special tax requirement. In calculating the special tax liability for fiscal year 2020-2021, this report examines the financial obligations of the current fiscal year and analyzes the level of development within CFD No. 2002-1. Though the Rate and Method of Apportionment describes the collection of an annual special tax as well as a Building Permit One-Time Special Tax and a one-time Grading Permit Special Tax, the focus of this report is the levy of the annual special taxes.

This report is organized into the following sections:

### **Section I**

Section I provides an update of the development status of property within CFD No. 2002-1.

### **Section II**

Section II analyzes the fiscal year 2019-2020 special tax levy.

**Section III**

Section III determines the financial obligations of CFD No. 2002-1 for fiscal year 2020-2021.

**Section IV**

Section IV reviews the methodology used to apportion the special tax requirement to Developed Property and Graded Property. A table of the 2020-2021 special taxes for each classification of property is included.

**A. SPECIAL TAX CLASSIFICATIONS**

The methodology employed to calculate and apportion the special tax is contained in a document entitled the Rate and Method of Apportionment. The Rate and Method of Apportionment defines three categories of property, namely "Developed Property," "Graded Property," and "Undeveloped Property." The category of Developed Property is in turn divided into four separate special tax classifications based on the type of structure built. A table of the Developed Property special tax classifications is shown below.

**Community Facilities District No. 2002-1  
Developed Property and Graded Property  
Classifications**

Land Use Class	Description
1	Single Family Property
2	Multi-Family Property
3	Non-Retail / Commercial Industrial Property
4	Retail Commercial Property
NA	Graded Property

Developed Property is distinguished from Graded Property and Undeveloped Property by the issuance of a building permit. Specifically, property for which a building permit was issued on or after March 1, 2002 and as of June 30 of the previous Fiscal Year will be classified as Developed Property in the following fiscal year. For example, all property in CFD No. 2002-1 for which a building permit was issued between March 1, 2002 and June 30, 2020, will be classified as Developed Property in fiscal year 2020-2021. For fiscal year 2020-2021, Graded Property is defined as all taxable property other than Developed Property, for which a land use permit for grading was issued between March 1, 2002 and June 30, 2020.

**B. DEVELOPMENT UPDATE**

The table below indicates the cumulative Developed Property, by class, within CFD No. 2002-1. According to the County of Santa Barbara, building permits for 63 single family units and 12,289 building square feet of Retail Commercial Property were issued within CFD No. 2002-1 from July 1, 2019 through June 6, 2020. We will continue to research permits issued through June 30, 2020.

**Community Facilities District No. 2002-1  
Fiscal Year 2020-2021  
Developed Property and Graded Property**

<b>Class</b>	<b>Land Use</b>	<b>Number of units/SF/lots</b>
1	Single Family Property	745 units
2	Multi-Family Property	184 units
3	Non-Retail Commercial/Industrial Property	5,241 sq. ft.
4	Retail Commercial Property	64,391 sq. ft.
NA	Graded Property	205 lots

There were no new annexations to CFD No. 2002-1 since July 1, 2018. The table below lists all of the property annexed to the original CFD No. 2002-1 boundary.

**Community Facilities District No. 2002-1  
Summary of Annexations**

<b>Annex No.</b>	<b>Assessor's Parcel Number</b>
1	105-400-01 through 105-400-62
2	107-270-48, 107-270-49 (now 107-270-48 and 107-270-51)
3	103-740-16
4	107-150-19 (now 107-150-20 through 107-150-22)
5	109-200-12, 109-200-13, 109-200-15, 109-200-16 (now 109-200-37 and 109-200-43)
6	103-750-38 (now 103-750-44, 103-750-45, and 103-750-46)
7	107-250-008 (now 107-250-23, 107-250-24, 107-890-01 through 107-890-22, 107-900-001 through 107-900-022, and 107-910-001 through 107-910-031)



**II. FISCAL YEAR 2019-2020 SPECIAL TAX LEVY**

The aggregate special tax levy for fiscal year 2019-2020 equaled \$585,905. As of June 16, 2020, \$585,239 in special taxes had been collected by the County, resulting in a delinquency rate of 0.1 percent.

**III. FISCAL YEAR 2020-2021 SPECIAL TAX REQUIREMENT**

For fiscal year 2020-2021, the special tax requirement is equal to \$660,580 and is calculated as follows:

**Community Facilities District No. 2002-1**  
**Fiscal Year 2020-2021 Special Tax Requirement**

<b>FISCAL YEAR 2020-2021 USES OF FUNDS:</b>	
CFD ADMINISTRATIVE EXPENSES	\$9,000
FIRE PROTECTION & SUPPRESSION SERVICES [1]	\$691,860
POLICE PROTECTION SERVICES [1]	\$504,740
MAINTENANCE OF PARKS, PARKWAYS AND OPEN SPACE [1]	\$217,179
FLOOD AND STORM PROTECTION SERVICES [1]	\$56,021
<b>TOTAL USES OF FUNDS</b>	<b>\$1,478,800</b>
ADJUSTMENT [2]	(\$818,220)
<b>FISCAL YEAR 2020-2021 SPECIAL TAX REQUIREMENT:</b>	<b>\$660,580</b>
<p>[1] Represents estimated share of annual service and/or maintenance costs for existing development within CFD No. 2002-1 based on the Fiscal Impact Analysis for the Orcutt Community Plan dated 5/7/2007 and updated with current development through 6/6/2020.</p> <p>[2] The County has decided to levy at 72% of the Maximum Special Tax for Developed Property in FY 2020-2021, which is the same percentage of the Maximum Special Tax levied since FY 2006-2007.</p>	

**A. MAXIMUM ANNUAL SPECIAL TAXES**

The amount of special taxes that CFD No. 2002-1 may levy is strictly limited by the maximum special taxes set forth in the Rate and Method of Apportionment. The Maximum Special Taxes for each classification of Developed Property are specified in Table 1 of Section C of the Rate and Method of Apportionment. The initial Maximum Special Tax will escalate each Fiscal Year by the greater of the change in the Los Angeles Urban Consumer Price Index ("CPI") during the twelve months prior to December of the previous fiscal year or 2%, commencing July 1, 2003 and continuing every July 1 thereafter. For fiscal year 2020-2021, the annual increase in the CPI was 2.96%, therefore, the Maximum Special Taxes escalate by 2.96%.

The maximum annual Grading Permit Special Tax for Graded Property is specified in Section C.2 of the Rate and Method of Apportionment. No Special Taxes shall be levied upon Undeveloped Property.

**B. APPORTIONMENT OF ANNUAL SPECIAL TAXES**

The annual special tax that is apportioned to each parcel is determined through the application of Section D of the Rate and Method of Apportionment.

The Grading Permit Special Tax shall be levied at 100% of the Maximum Special Tax on each legal lot of Graded Property.

In addition, the Maximum Special Tax shall be levied against each Assessor's Parcel of Developed Property at up to 100% of the applicable Maximum Special Tax until the amount of the Special Taxes equals the Special Tax Requirement. Application of the maximum rates yields aggregate special tax revenues of \$913,499. The fiscal year 2020-2021 special tax for Developed Property necessary to generate the Special Tax Requirement is equal to 72 percent of the maximum special tax.

The fiscal year 2020-2021 maximum and actual special taxes are shown for each classification of Developed Property and Graded Property in the following table.

**Community Facilities District No. 2002-1  
Fiscal Year 2020-2021 Annual Special Taxes  
for Developed Property and Graded Property**

Land Use Class	Description	FY 2020-2021 Maximum Special Tax	FY 2020-2021 Actual Special Tax
1	Single Family Property	\$982.18 per unit	\$707.16 per unit
2	Multi-Family Property	\$667.88 per unit	\$480.87 per unit
3	Non-Retail Commercial/Industrial Property	\$0.95272 per sq. ft.	\$0.68596 per sq. ft.
4	Retail Commercial Property	\$0.67772 per sq. ft.	\$0.48796 per sq. ft.
NA	Graded Property	\$50.00 per lot	\$50.00 per lot

A list of the actual special tax levied against each parcel in CFD No. 2002-1 is included in Exhibit B.

In addition to the annual special taxes, CFD No. 2002-1 shall levy the following one-time special taxes for Fiscal Year 2020-2021.

**Community Facilities District No. 2002-1  
Fiscal Year 2020-2021  
One-Time Special Taxes**

Type of Tax	Property Type	FY 2020-2021 Special Tax	Time of Levy
Building Permit One-Time Special Tax	Residential Property	\$250 per unit	Issuance of Building Permit
Building Permit One-Time Special Tax	Non-Residential Property	\$0.20 per sq. ft.	Issuance of Building Permit
Grading Permit Special Tax	NA	\$50 per lot	Issuance of Land Use Permit for Grading

# **EXHIBIT A**

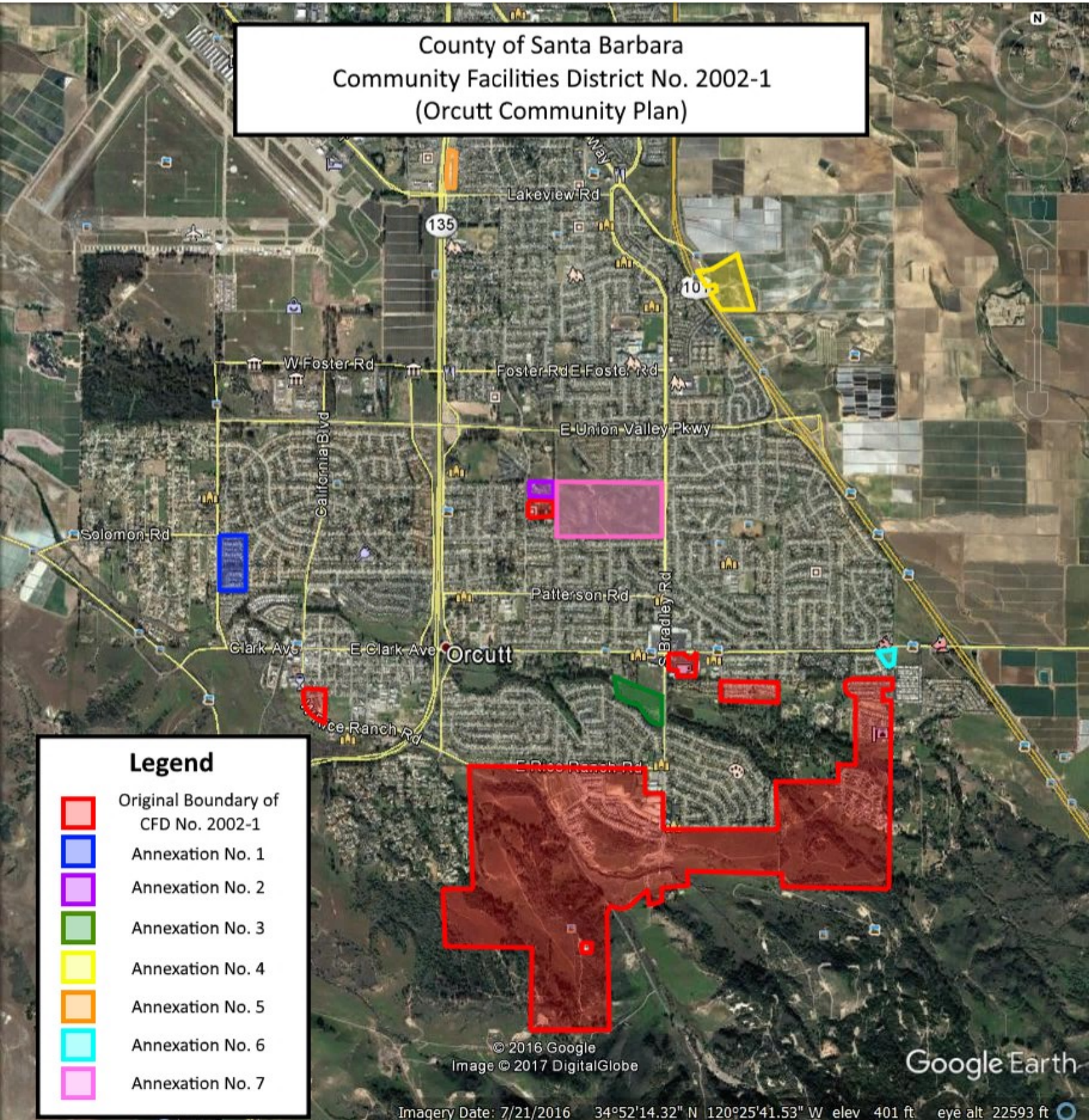
Fiscal Year 2020-2021  
Administration Report  
County of Santa Barbara  
Community Facilities District No. 2002-1  
(Orcutt Community Plan)



## **BOUNDARY MAP**



County of Santa Barbara  
Community Facilities District No. 2002-1  
(Orcutt Community Plan)



**Legend**

- Original Boundary of CFD No. 2002-1
- Annexation No. 1
- Annexation No. 2
- Annexation No. 3
- Annexation No. 4
- Annexation No. 5
- Annexation No. 6
- Annexation No. 7

## **EXHIBIT B**

Fiscal Year 2020-2021  
Administration Report  
County of Santa Barbara  
Community Facilities District No. 2002-1  
(Orcutt Community Plan)



**SPECIAL TAX ROLL FY 2020-2021**



## Exhibit B

County of Santa Barbara  
CFD No. 2002-1  
FY 2020-2021 Special Tax Levy

---

<u>Assessor's Parcel Number</u>	<u>FY 2020-2021 Special Tax</u>	<u>Assessor's Parcel Number</u>	<u>FY 2020-2021 Special Tax</u>
101-370-01	\$707.16	101-370-58	\$707.16
101-370-02	\$707.16	101-370-59	\$707.16
101-370-03	\$707.16	101-370-60	\$707.16
101-370-04	\$707.16	101-370-61	\$707.16
101-370-05	\$707.16	101-370-62	\$707.16
101-370-06	\$707.16	101-370-63	\$707.16
101-370-07	\$707.16	101-370-71	\$707.16
101-370-08	\$707.16	101-370-75	\$707.16
101-370-09	\$707.16	101-370-76	\$707.16
101-370-10	\$707.16	101-370-77	\$707.16
101-370-11	\$707.16	101-370-78	\$707.16
101-370-12	\$707.16	101-370-79	\$707.16
101-370-13	\$707.16	101-410-01	\$707.16
101-370-14	\$707.16	101-410-02	\$707.16
101-370-15	\$707.16	101-410-03	\$707.16
101-370-16	\$707.16	101-410-04	\$707.16
101-370-17	\$707.16	101-410-05	\$707.16
101-370-18	\$707.16	101-410-06	\$707.16
101-370-19	\$707.16	101-410-07	\$707.16
101-370-20	\$707.16	101-410-08	\$707.16
101-370-21	\$707.16	101-410-09	\$707.16
101-370-22	\$707.16	101-410-10	\$707.16
101-370-23	\$707.16	101-410-11	\$707.16
101-370-24	\$707.16	101-410-12	\$707.16
101-370-25	\$707.16	101-410-13	\$707.16
101-370-26	\$707.16	101-410-14	\$707.16
101-370-27	\$707.16	101-410-15	\$707.16
101-370-28	\$707.16	101-410-16	\$707.16
101-370-29	\$707.16	101-410-17	\$707.16
101-370-30	\$707.16	101-410-18	\$707.16
101-370-31	\$707.16	101-410-19	\$707.16
101-370-32	\$707.16	101-410-20	\$707.16
101-370-33	\$707.16	101-410-21	\$707.16
101-370-34	\$707.16	101-410-22	\$707.16
101-370-35	\$707.16	101-410-23	\$707.16
101-370-36	\$707.16	101-410-24	\$707.16
101-370-37	\$707.16	101-410-25	\$707.16
101-370-38	\$707.16	101-410-26	\$707.16
101-370-39	\$707.16	101-410-27	\$707.16
101-370-40	\$707.16	101-410-28	\$707.16
101-370-41	\$707.16	101-410-29	\$707.16
101-370-42	\$707.16	101-410-30	\$707.16
101-370-43	\$707.16	101-410-31	\$707.16
101-370-44	\$707.16	101-410-32	\$707.16
101-370-45	\$707.16	101-410-33	\$707.16
101-370-46	\$707.16	101-410-34	\$707.16
101-370-47	\$707.16	101-410-35	\$707.16
101-370-48	\$707.16	101-410-36	\$707.16
101-370-49	\$707.16	101-410-37	\$707.16
101-370-54	\$707.16	101-410-38	\$707.16
101-370-56	\$707.16	101-410-39	\$707.16
101-370-57	\$707.16	101-410-40	\$707.16

## Exhibit B

**County of Santa Barbara**  
**CFD No. 2002-1**  
**FY 2020-2021 Special Tax Levy**

---

<u>Assessor's Parcel Number</u>	<u>FY 2020-2021 Special Tax</u>	<u>Assessor's Parcel Number</u>	<u>FY 2020-2021 Special Tax</u>
101-410-41	\$707.16	101-430-15	\$707.16
101-410-42	\$707.16	101-430-16	\$707.16
101-410-43	\$707.16	101-430-17	\$707.16
101-410-44	\$707.16	101-430-18	\$707.16
101-410-45	\$707.16	101-430-19	\$707.16
101-420-01	\$707.16	101-430-20	\$707.16
101-420-02	\$707.16	101-430-21	\$707.16
101-420-03	\$707.16	101-440-01	\$707.16
101-420-04	\$707.16	101-440-02	\$707.16
101-420-05	\$707.16	101-440-03	\$707.16
101-420-06	\$707.16	101-440-04	\$707.16
101-420-07	\$707.16	101-440-05	\$707.16
101-420-08	\$707.16	101-440-06	\$707.16
101-420-09	\$707.16	101-440-07	\$707.16
101-420-10	\$707.16	101-440-08	\$707.16
101-420-11	\$707.16	101-440-09	\$707.16
101-420-12	\$707.16	101-440-10	\$707.16
101-420-13	\$707.16	101-440-11	\$707.16
101-420-14	\$707.16	101-440-12	\$707.16
101-420-15	\$707.16	101-440-13	\$707.16
101-420-16	\$707.16	101-440-14	\$707.16
101-420-17	\$707.16	101-440-15	\$707.16
101-420-18	\$707.16	101-440-16	\$707.16
101-420-19	\$707.16	101-440-17	\$707.16
101-420-20	\$707.16	101-440-18	\$707.16
101-420-21	\$707.16	101-440-19	\$707.16
101-420-22	\$707.16	101-440-20	\$707.16
101-420-23	\$707.16	101-440-21	\$707.16
101-420-24	\$707.16	101-440-22	\$707.16
101-420-25	\$707.16	101-440-23	\$707.16
101-420-26	\$707.16	101-440-24	\$707.16
101-420-27	\$707.16	101-440-25	\$707.16
101-420-30	\$707.16	101-440-26	\$707.16
101-420-31	\$707.16	101-440-27	\$707.16
101-420-32	\$707.16	101-440-28	\$707.16
101-420-36	\$707.16	101-450-01	\$707.16
101-420-37	\$707.16	101-450-02	\$707.16
101-420-39	\$707.16	101-450-03	\$707.16
101-420-40	\$707.16	101-450-04	\$707.16
101-430-01	\$707.16	101-450-05	\$707.16
101-430-02	\$707.16	101-450-06	\$707.16
101-430-03	\$707.16	101-450-07	\$707.16
101-430-04	\$707.16	101-450-08	\$707.16
101-430-05	\$707.16	101-450-09	\$707.16
101-430-06	\$707.16	101-450-10	\$707.16
101-430-07	\$707.16	101-450-11	\$707.16
101-430-08	\$707.16	101-450-12	\$707.16
101-430-09	\$707.16	101-450-13	\$707.16
101-430-10	\$707.16	101-450-14	\$707.16
101-430-11	\$707.16	101-450-15	\$707.16
101-430-12	\$707.16	101-450-16	\$707.16
101-430-13	\$707.16	101-450-17	\$707.16
101-430-14	\$707.16	101-450-18	\$707.16

## Exhibit B

**County of Santa Barbara**  
**CFD No. 2002-1**  
**FY 2020-2021 Special Tax Levy**

---

<u>Assessor's Parcel Number</u>	<u>FY 2020-2021 Special Tax</u>	<u>Assessor's Parcel Number</u>	<u>FY 2020-2021 Special Tax</u>
101-450-19	\$707.16	101-490-05	\$707.16
101-450-20	\$707.16	101-490-06	\$707.16
101-450-21	\$707.16	101-490-07	\$707.16
101-450-22	\$707.16	101-490-08	\$707.16
101-450-23	\$707.16	101-490-09	\$707.16
101-450-24	\$707.16	101-490-10	\$707.16
101-460-01	\$707.16	101-490-11	\$707.16
101-460-02	\$707.16	101-490-12	\$707.16
101-460-03	\$707.16	101-490-13	\$707.16
101-460-04	\$707.16	101-490-14	\$707.16
101-460-05	\$707.16	101-490-15	\$707.16
101-460-06	\$707.16	101-490-16	\$707.16
101-460-07	\$707.16	101-490-17	\$707.16
101-460-08	\$707.16	101-490-18	\$707.16
101-460-09	\$707.16	101-490-19	\$707.16
101-460-10	\$707.16	101-490-20	\$707.16
101-460-11	\$707.16	101-490-21	\$707.16
101-460-12	\$707.16	101-490-22	\$707.16
101-460-13	\$707.16	101-490-23	\$707.16
101-460-14	\$707.16	101-490-24	\$707.16
101-460-15	\$707.16	101-490-25	\$707.16
101-460-17	\$707.16	101-490-26	\$707.16
101-460-18	\$707.16	101-490-27	\$707.16
101-460-19	\$707.16	101-490-28	\$707.16
101-460-20	\$707.16	101-490-29	\$707.16
101-460-21	\$707.16	101-490-30	\$707.16
101-460-22	\$707.16	101-490-31	\$707.16
101-460-23	\$707.16	101-490-32	\$707.16
101-460-24	\$707.16	101-490-33	\$707.16
101-460-25	\$707.16	101-490-34	\$707.16
101-460-26	\$707.16	101-490-35	\$707.16
101-460-27	\$707.16	101-490-36	\$707.16
101-460-28	\$707.16	101-490-37	\$707.16
101-470-01	\$707.16	101-490-38	\$707.16
101-470-02	\$707.16	101-490-39	\$707.16
101-470-03	\$707.16	101-490-40	\$707.16
101-470-04	\$707.16	101-490-41	\$707.16
101-470-05	\$707.16	101-490-42	\$707.16
101-470-06	\$707.16	101-490-43	\$50.00
101-470-07	\$707.16	101-490-44	\$50.00
101-470-08	\$707.16	101-490-45	\$707.16
101-470-09	\$707.16	101-490-46	\$707.16
101-470-10	\$707.16	101-490-47	\$707.16
101-470-11	\$707.16	101-490-48	\$707.16
101-470-12	\$707.16	101-490-49	\$707.16
101-470-13	\$707.16	101-490-50	\$707.16
101-470-14	\$707.16	101-490-51	\$707.16
101-470-15	\$707.16	101-490-52	\$707.16
101-470-16	\$707.16	101-490-53	\$50.00
101-490-01	\$707.16	101-490-54	\$50.00
101-490-02	\$707.16	101-490-55	\$707.16
101-490-03	\$707.16	101-490-56	\$707.16
101-490-04	\$707.16	101-490-57	\$707.16

## Exhibit B

**County of Santa Barbara  
CFD No. 2002-1  
FY 2020-2021 Special Tax Levy**

---

<u>Assessor's Parcel Number</u>	<u>FY 2020-2021 Special Tax</u>	<u>Assessor's Parcel Number</u>	<u>FY 2020-2021 Special Tax</u>
101-490-58	\$707.16	101-500-41	\$707.16
101-490-59	\$707.16	101-500-42	\$707.16
101-490-60	\$707.16	101-500-43	\$707.16
101-490-61	\$707.16	101-500-44	\$707.16
101-490-62	\$707.16	101-510-01	\$50.00
101-490-63	\$707.16	101-510-02	\$50.00
101-490-64	\$707.16	101-510-03	\$50.00
101-490-65	\$707.16	101-510-04	\$707.16
101-490-66	\$707.16	101-510-05	\$707.16
101-490-67	\$50.00	101-510-06	\$50.00
101-490-68	\$50.00	101-510-07	\$707.16
101-490-69	\$50.00	101-510-08	\$707.16
101-490-70	\$50.00	101-510-09	\$707.16
101-500-01	\$50.00	101-510-10	\$707.16
101-500-02	\$50.00	101-510-11	\$707.16
101-500-03	\$50.00	101-510-12	\$707.16
101-500-04	\$50.00	101-510-13	\$707.16
101-500-05	\$50.00	101-510-14	\$707.16
101-500-06	\$50.00	101-510-15	\$707.16
101-500-07	\$50.00	101-510-16	\$707.16
101-500-08	\$50.00	101-510-17	\$707.16
101-500-09	\$707.16	101-510-18	\$707.16
101-500-10	\$707.16	101-510-19	\$707.16
101-500-11	\$707.16	101-510-20	\$707.16
101-500-12	\$707.16	101-510-21	\$707.16
101-500-13	\$707.16	101-510-22	\$707.16
101-500-14	\$707.16	101-510-23	\$707.16
101-500-15	\$707.16	101-510-24	\$707.16
101-500-16	\$707.16	101-510-25	\$707.16
101-500-17	\$707.16	101-510-26	\$707.16
101-500-18	\$707.16	101-510-27	\$707.16
101-500-19	\$707.16	101-510-28	\$707.16
101-500-20	\$707.16	101-510-29	\$707.16
101-500-21	\$707.16	101-510-30	\$707.16
101-500-22	\$707.16	101-510-31	\$50.00
101-500-23	\$707.16	101-510-32	\$50.00
101-500-24	\$707.16	101-510-33	\$50.00
101-500-25	\$707.16	101-510-34	\$50.00
101-500-26	\$707.16	101-510-35	\$50.00
101-500-27	\$707.16	101-510-36	\$50.00
101-500-28	\$707.16	101-510-37	\$50.00
101-500-29	\$50.00	101-510-38	\$50.00
101-500-30	\$50.00	101-510-39	\$50.00
101-500-31	\$50.00	101-510-40	\$50.00
101-500-32	\$50.00	101-510-41	\$50.00
101-500-33	\$50.00	101-510-42	\$50.00
101-500-34	\$50.00	101-510-43	\$50.00
101-500-35	\$50.00	101-510-45	\$50.00
101-500-36	\$50.00	101-510-46	\$50.00
101-500-37	\$50.00	101-510-52	\$50.00
101-500-38	\$50.00	101-510-53	\$50.00
101-500-39	\$50.00	101-520-02	\$50.00
101-500-40	\$50.00	101-520-03	\$50.00

## Exhibit B

**County of Santa Barbara**  
**CFD No. 2002-1**  
**FY 2020-2021 Special Tax Levy**

---

<u>Assessor's Parcel Number</u>	<u>FY 2020-2021 Special Tax</u>	<u>Assessor's Parcel Number</u>	<u>FY 2020-2021 Special Tax</u>
101-520-04	\$50.00	101-530-04	\$707.16
101-520-05	\$50.00	101-530-05	\$707.16
101-520-06	\$50.00	101-530-06	\$707.16
101-520-07	\$50.00	101-530-07	\$707.16
101-520-08	\$50.00	101-530-08	\$707.16
101-520-09	\$50.00	101-530-09	\$707.16
101-520-10	\$50.00	101-530-10	\$707.16
101-520-11	\$50.00	101-530-11	\$707.16
101-520-12	\$50.00	101-530-12	\$707.16
101-520-13	\$50.00	101-530-13	\$707.16
101-520-14	\$50.00	101-530-14	\$707.16
101-520-15	\$50.00	101-530-15	\$707.16
101-520-16	\$50.00	101-530-16	\$50.00
101-520-17	\$50.00	101-530-17	\$50.00
101-520-18	\$50.00	101-530-18	\$50.00
101-520-19	\$50.00	101-530-19	\$50.00
101-520-20	\$50.00	101-530-20	\$50.00
101-520-21	\$50.00	101-530-21	\$50.00
101-520-22	\$50.00	101-530-22	\$50.00
101-520-23	\$50.00	101-530-23	\$707.16
101-520-24	\$50.00	101-530-24	\$707.16
101-520-25	\$50.00	101-530-25	\$707.16
101-520-26	\$50.00	101-530-26	\$707.16
101-520-27	\$50.00	101-530-27	\$707.16
101-520-28	\$50.00	101-530-28	\$707.16
101-520-29	\$50.00	101-530-29	\$707.16
101-520-30	\$50.00	101-530-30	\$707.16
101-520-31	\$50.00	101-530-31	\$707.16
101-520-32	\$50.00	101-530-32	\$50.00
101-520-33	\$50.00	101-530-33	\$50.00
101-520-34	\$50.00	101-530-34	\$50.00
101-520-35	\$50.00	101-530-35	\$50.00
101-520-36	\$50.00	101-530-36	\$50.00
101-520-37	\$50.00	101-530-37	\$50.00
101-520-38	\$50.00	101-530-38	\$50.00
101-520-39	\$50.00	101-530-39	\$50.00
101-520-40	\$50.00	101-530-40	\$50.00
101-520-41	\$50.00	101-530-41	\$50.00
101-520-42	\$50.00	101-530-42	\$50.00
101-520-43	\$50.00	101-530-43	\$50.00
101-520-44	\$50.00	101-530-44	\$50.00
101-520-45	\$50.00	101-530-45	\$50.00
101-520-46	\$50.00	101-530-46	\$50.00
101-520-47	\$50.00	101-530-47	\$50.00
101-520-48	\$50.00	101-530-48	\$50.00
101-520-49	\$50.00	101-530-49	\$50.00
101-520-50	\$50.00	101-530-50	\$50.00
101-520-51	\$50.00	101-530-51	\$50.00
101-520-52	\$50.00	101-530-52	\$50.00
101-520-53	\$50.00	101-530-53	\$50.00
101-530-01	\$707.16	101-530-54	\$50.00
101-530-02	\$707.16	101-530-55	\$50.00
101-530-03	\$707.16	101-530-56	\$50.00

## Exhibit B

County of Santa Barbara  
CFD No. 2002-1  
FY 2020-2021 Special Tax Levy

---

<u>Assessor's Parcel Number</u>	<u>FY 2020-2021 Special Tax</u>	<u>Assessor's Parcel Number</u>	<u>FY 2020-2021 Special Tax</u>
101-530-57	\$50.00	101-550-13	\$50.00
101-530-58	\$50.00	101-550-14	\$50.00
101-530-59	\$50.00	101-550-15	\$50.00
101-530-60	\$50.00	101-550-16	\$50.00
101-530-61	\$50.00	101-550-17	\$50.00
101-530-63	\$50.00	101-550-18	\$50.00
101-530-64	\$50.00	101-550-19	\$50.00
101-530-65	\$50.00	101-550-20	\$50.00
101-530-72	\$50.00	101-550-21	\$50.00
101-540-01	\$50.00	101-550-22	\$50.00
101-540-02	\$50.00	101-550-23	\$50.00
101-540-03	\$50.00	101-550-24	\$50.00
101-540-04	\$50.00	101-550-25	\$50.00
101-540-05	\$50.00	101-550-26	\$50.00
101-540-06	\$707.16	101-550-27	\$50.00
101-540-07	\$707.16	101-550-28	\$50.00
101-540-08	\$707.16	101-550-29	\$50.00
101-540-09	\$50.00	101-550-30	\$50.00
101-540-10	\$707.16	101-550-31	\$50.00
101-540-11	\$707.16	101-550-32	\$50.00
101-540-12	\$707.16	101-550-33	\$50.00
101-540-13	\$707.16	101-550-34	\$50.00
101-540-14	\$707.16	101-550-35	\$50.00
101-540-15	\$50.00	101-550-36	\$50.00
101-540-16	\$707.16	101-550-37	\$50.00
101-540-17	\$707.16	101-550-38	\$50.00
101-540-18	\$707.16	101-550-39	\$50.00
101-540-19	\$707.16	101-550-40	\$50.00
101-540-20	\$707.16	101-550-41	\$50.00
101-540-21	\$707.16	101-550-42	\$50.00
101-540-22	\$707.16	101-550-43	\$50.00
101-540-23	\$707.16	101-550-44	\$50.00
101-540-24	\$707.16	101-550-45	\$50.00
101-540-25	\$707.16	101-550-46	\$50.00
101-540-26	\$50.00	101-550-51	\$50.00
101-540-27	\$50.00	103-740-16	\$50.00
101-540-28	\$50.00	103-740-25	\$5,406.60
101-540-29	\$707.16	103-740-28	\$6,918.78
101-540-30	\$50.00	103-740-31	\$812.94
101-540-31	\$50.00	103-740-32	\$1,489.74
101-540-41	\$50.00	103-740-34	\$993.96
101-550-01	\$50.00	103-750-44	\$1,457.54
101-550-02	\$50.00	103-750-45	\$2,200.20
101-550-03	\$50.00	103-750-46	\$2,338.78
101-550-04	\$50.00	103-760-02	\$50.00
101-550-05	\$50.00	103-760-03	\$50.00
101-550-06	\$50.00	103-770-01	\$707.16
101-550-07	\$50.00	103-770-02	\$707.16
101-550-08	\$50.00	103-770-03	\$707.16
101-550-09	\$50.00	103-770-04	\$707.16
101-550-10	\$50.00	103-770-05	\$707.16
101-550-11	\$50.00	103-770-06	\$707.16
101-550-12	\$50.00	103-770-07	\$707.16

## Exhibit B

County of Santa Barbara  
CFD No. 2002-1  
FY 2020-2021 Special Tax Levy

---

<u>Assessor's Parcel Number</u>	<u>FY 2020-2021 Special Tax</u>	<u>Assessor's Parcel Number</u>	<u>FY 2020-2021 Special Tax</u>
103-770-08	\$707.16	103-780-08	\$707.16
103-770-09	\$707.16	103-780-09	\$707.16
103-770-10	\$707.16	103-780-10	\$707.16
103-770-11	\$707.16	103-780-11	\$707.16
103-770-12	\$707.16	103-780-12	\$707.16
103-770-13	\$707.16	103-780-13	\$707.16
103-770-14	\$707.16	103-780-14	\$707.16
103-770-15	\$707.16	103-780-15	\$707.16
103-770-16	\$707.16	103-780-16	\$707.16
103-770-17	\$707.16	103-780-17	\$707.16
103-770-18	\$707.16	103-780-18	\$707.16
103-770-19	\$707.16	103-780-19	\$707.16
103-770-20	\$707.16	103-780-20	\$707.16
103-770-21	\$707.16	103-780-21	\$707.16
103-770-22	\$707.16	103-780-22	\$707.16
103-770-23	\$707.16	103-780-23	\$707.16
103-770-24	\$707.16	103-780-24	\$707.16
103-770-25	\$707.16	103-780-25	\$707.16
103-770-26	\$707.16	103-780-26	\$707.16
103-770-27	\$707.16	103-780-27	\$707.16
103-770-28	\$707.16	103-780-28	\$707.16
103-770-29	\$707.16	103-780-29	\$707.16
103-770-30	\$707.16	103-780-30	\$707.16
103-770-31	\$707.16	103-780-31	\$707.16
103-770-32	\$707.16	103-780-32	\$707.16
103-770-33	\$707.16	103-780-33	\$707.16
103-770-34	\$707.16	103-780-34	\$707.16
103-770-35	\$707.16	103-780-35	\$707.16
103-770-36	\$707.16	103-780-36	\$707.16
103-770-37	\$707.16	103-780-37	\$707.16
103-770-38	\$707.16	103-780-38	\$707.16
103-770-39	\$707.16	103-780-39	\$707.16
103-770-40	\$707.16	103-780-40	\$707.16
103-770-41	\$707.16	103-780-41	\$707.16
103-770-42	\$707.16	103-780-42	\$707.16
103-770-43	\$707.16	103-780-43	\$707.16
103-770-44	\$707.16	103-780-44	\$707.16
103-770-45	\$707.16	103-780-45	\$707.16
103-770-46	\$707.16	103-780-46	\$707.16
103-770-47	\$707.16	103-780-47	\$707.16
103-770-48	\$707.16	103-780-48	\$707.16
103-770-49	\$707.16	103-780-49	\$707.16
103-770-50	\$707.16	103-780-50	\$707.16
103-770-51	\$707.16	103-780-51	\$707.16
103-770-52	\$707.16	103-780-52	\$707.16
103-770-53	\$707.16	103-780-53	\$707.16
103-780-01	\$707.16	103-780-54	\$707.16
103-780-02	\$707.16	103-780-55	\$707.16
103-780-03	\$707.16	103-780-56	\$707.16
103-780-04	\$707.16	103-780-57	\$707.16
103-780-05	\$707.16	103-790-01	\$707.16
103-780-06	\$707.16	103-790-02	\$707.16
103-780-07	\$707.16	103-790-03	\$707.16

## Exhibit B

**County of Santa Barbara**  
**CFD No. 2002-1**  
**FY 2020-2021 Special Tax Levy**

---

<u>Assessor's Parcel Number</u>	<u>FY 2020-2021 Special Tax</u>	<u>Assessor's Parcel Number</u>	<u>FY 2020-2021 Special Tax</u>
103-790-04	\$707.16	105-390-13	\$707.16
103-790-05	\$707.16	105-390-14	\$707.16
103-790-06	\$707.16	105-390-15	\$707.16
103-790-07	\$707.16	105-390-16	\$707.16
103-790-08	\$707.16	105-390-17	\$707.16
103-790-09	\$707.16	105-390-18	\$707.16
103-790-10	\$707.16	105-390-19	\$707.16
103-790-11	\$707.16	105-390-20	\$707.16
103-790-12	\$707.16	105-390-21	\$707.16
103-790-13	\$707.16	105-390-22	\$707.16
103-790-14	\$707.16	105-390-23	\$707.16
103-790-15	\$707.16	105-390-24	\$707.16
103-790-16	\$707.16	105-390-25	\$707.16
103-790-17	\$707.16	105-390-26	\$707.16
103-790-18	\$707.16	105-390-27	\$707.16
103-790-19	\$707.16	105-390-28	\$707.16
103-790-20	\$707.16	105-390-29	\$707.16
103-790-21	\$707.16	105-390-30	\$707.16
103-790-22	\$707.16	105-390-31	\$707.16
103-790-23	\$707.16	105-390-32	\$707.16
103-790-24	\$707.16	105-390-33	\$707.16
103-790-25	\$707.16	105-390-34	\$707.16
103-790-26	\$707.16	105-390-35	\$707.16
103-790-27	\$707.16	105-390-36	\$707.16
103-790-28	\$707.16	105-390-37	\$707.16
103-790-29	\$707.16	105-390-38	\$707.16
103-790-30	\$707.16	105-390-39	\$707.16
103-790-31	\$707.16	105-390-40	\$707.16
103-790-32	\$707.16	105-390-41	\$707.16
103-790-33	\$707.16	105-390-42	\$707.16
103-790-34	\$707.16	105-390-43	\$707.16
103-790-35	\$707.16	105-390-44	\$707.16
103-790-36	\$707.16	105-400-01	\$707.16
103-790-37	\$707.16	105-400-02	\$707.16
103-790-38	\$707.16	105-400-03	\$707.16
103-790-39	\$707.16	105-400-04	\$707.16
103-790-40	\$707.16	105-400-05	\$707.16
103-790-41	\$707.16	105-400-06	\$707.16
103-790-42	\$707.16	105-400-07	\$707.16
103-790-43	\$707.16	105-400-08	\$707.16
103-790-44	\$707.16	105-400-09	\$707.16
105-390-01	\$707.16	105-400-10	\$707.16
105-390-02	\$707.16	105-400-11	\$707.16
105-390-03	\$707.16	105-400-12	\$707.16
105-390-04	\$707.16	105-400-13	\$707.16
105-390-05	\$707.16	105-400-14	\$707.16
105-390-06	\$707.16	105-400-15	\$707.16
105-390-07	\$707.16	105-400-16	\$707.16
105-390-08	\$707.16	105-400-17	\$707.16
105-390-09	\$707.16	105-400-18	\$707.16
105-390-10	\$707.16	105-400-19	\$707.16
105-390-11	\$707.16	105-400-20	\$707.16
105-390-12	\$707.16	105-400-21	\$707.16



## Exhibit B

**County of Santa Barbara**  
**CFD No. 2002-1**  
**FY 2020-2021 Special Tax Levy**

---

<u>Assessor's Parcel Number</u>	<u>FY 2020-2021 Special Tax</u>	<u>Assessor's Parcel Number</u>	<u>FY 2020-2021 Special Tax</u>
105-400-22	\$707.16	107-890-13	\$707.16
105-400-23	\$707.16	107-890-14	\$707.16
105-400-24	\$707.16	107-890-15	\$707.16
105-400-25	\$707.16	107-890-16	\$707.16
105-400-26	\$707.16	107-890-17	\$707.16
105-400-27	\$707.16	107-890-18	\$707.16
105-400-28	\$707.16	107-890-21	\$7,693.92
105-400-29	\$707.16	107-890-22	\$30,775.68
105-400-30	\$707.16	107-890-23	\$29,813.94
105-400-31	\$707.16	107-900-01	\$707.16
105-400-32	\$707.16	107-900-02	\$707.16
105-400-33	\$707.16	107-900-03	\$707.16
105-400-34	\$707.16	107-900-04	\$707.16
105-400-35	\$707.16	107-900-05	\$707.16
105-400-36	\$707.16	107-900-06	\$707.16
105-400-37	\$707.16	107-900-07	\$707.16
105-400-38	\$707.16	107-900-08	\$707.16
105-400-39	\$707.16	107-900-09	\$707.16
105-400-40	\$707.16	107-900-10	\$707.16
105-400-41	\$707.16	107-900-11	\$707.16
105-400-42	\$707.16	107-900-12	\$707.16
105-400-43	\$707.16	107-900-13	\$707.16
105-400-44	\$707.16	107-900-14	\$707.16
105-400-45	\$707.16	107-900-15	\$707.16
105-400-46	\$707.16	107-900-16	\$707.16
105-400-47	\$707.16	107-900-17	\$707.16
105-400-48	\$707.16	107-900-18	\$707.16
105-400-49	\$707.16	107-900-19	\$707.16
105-400-50	\$707.16	107-900-20	\$707.16
105-400-51	\$707.16	107-900-23	\$7,693.92
105-400-52	\$707.16	107-910-01	\$707.16
105-400-53	\$707.16	107-910-02	\$707.16
105-400-54	\$707.16	107-910-03	\$707.16
105-400-55	\$707.16	107-910-04	\$707.16
105-400-56	\$707.16	107-910-05	\$707.16
105-400-57	\$707.16	107-910-06	\$707.16
105-400-58	\$707.16	107-910-07	\$707.16
105-400-59	\$707.16	107-910-08	\$707.16
105-400-60	\$707.16	107-910-09	\$707.16
107-270-12	\$4,950.18	107-910-10	\$707.16
107-270-51	\$9,617.40	107-910-11	\$707.16
107-890-01	\$707.16	107-910-12	\$707.16
107-890-02	\$707.16	107-910-13	\$707.16
107-890-03	\$707.16	107-910-14	\$707.16
107-890-04	\$707.16	107-910-15	\$707.16
107-890-05	\$707.16	107-910-16	\$707.16
107-890-06	\$707.16	107-910-17	\$707.16
107-890-07	\$707.16	107-910-18	\$707.16
107-890-08	\$707.16	107-910-19	\$707.16
107-890-09	\$707.16	107-910-20	\$707.16
107-890-10	\$707.16	107-910-21	\$707.16
107-890-11	\$707.16	107-910-22	\$707.16
107-890-12	\$707.16	107-910-23	\$707.16

Exhibit B

County of Santa Barbara  
 CFD No. 2002-1  
 FY 2020-2021 Special Tax Levy

---

<u>Assessor's Parcel Number</u>	<u>FY 2020-2021 Special Tax</u>	<u>Assessor's Parcel Number</u>	<u>FY 2020-2021 Special Tax</u>
107-910-24	\$707.16		
107-910-25	\$707.16		
107-910-26	\$707.16		
107-910-27	\$961.74		
107-910-28	\$707.16		
107-910-29	\$961.74		
107-910-30	\$961.74		
107-910-31	\$707.16		
109-200-37	\$3,595.12		
109-200-43	\$9,801.64		
<b>Total FY 2020-2021 Special Tax Levy</b>		<b>\$660,579.64</b>	
<b>Total Number of Parcels Taxed</b>		<b>962</b>	